

# The Georgia Perimeter College Fact Book

---

1999-2000

Produced by  
The Office of Institutional Research and Planning  
Georgia Perimeter College  
3251 Panthersville Road  
Decatur, GA 30034-2360  
Phone: 404-244-2261; Fax: 404-244-5024

Published in September 2000, Decatur, Georgia, U.S.A.  
Electronic format available on our web site at  
[www.gpc.peachnet.edu](http://www.gpc.peachnet.edu)

# Preface

---

The 1999-2000 edition of the *Georgia Perimeter College Fact Book* provides a comprehensive statistical picture of Georgia Perimeter College. This book outlines enrollment, faculty and staff data, financial reports, and other information for the Georgia Perimeter College campuses at Clarkston, Decatur, Dunwoody, Lawrenceville, and the Rockdale Center.

All enrollment data are based on students enrolled on October 18, 1999. All administrative and academic information is based on data as of October 1999. All fiscal year data are collected as of June 30, 1999. The definitions and guidelines used in this book are consistent with the Integrated Post-secondary Education Data System (IPEDS) and policies of the Board of Regents of the University System of Georgia. All the data sources, unless noted, are from GPC's Institutional Research and Planning Office.

The *Georgia Perimeter College Fact Book 1999-2000* is a publication produced by the Office of Institutional Research and Planning. It is also a product of cooperative efforts of the many offices and campuses of Georgia Perimeter College. Their efforts are gratefully acknowledged and thanked.

The electronic version of the Fact Book is accessible to the public on World Wide Web via Georgia Perimeter College's home page at [www.gpc.peachnet.edu](http://www.gpc.peachnet.edu) or directly at [www.gpc.peachnet.edu/factbook00.html](http://www.gpc.peachnet.edu/factbook00.html).

Inquiries and comments regarding this document are sincerely welcome and may be directed to the Institutional Research and Planning Office (College District Offices, 3251 Panthersville Road, Decatur, GA 30034; Phone: 404-244-2261; Fax: 404-244-5024; E-mail at [lfincher@gpc.peachnet.edu](mailto:lfincher@gpc.peachnet.edu)).

Felita T. Williams, Ph.D., Executive Assistant to the President for Advancement

Kuan R. Yang, Ph.D., Director, Institutional Research and Planning

B. Edward Hale, Ph.D., Assistant Director, Institutional Research and Planning

Lashay Fincher, Administrative Secretary, Institutional Research and Planning

# President's Message

---

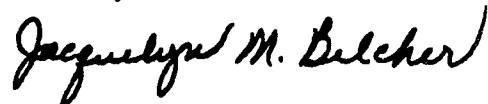
Welcome to the *Georgia Perimeter College Fact Book 1999-2000!* In this book, we have outlined facts and figures to help you understand the integral role Georgia Perimeter College plays in the lives of the people we serve. You will find information that focuses especially on the academic programs, our students, and the services we provide beyond the classroom.

Upholding our proud pledge of "Students First," Georgia Perimeter College has become a premier institution of higher learning in Metro Atlanta, well-known for being student-centered and student-friendly. Our pledge is further reflected in our commitment to diversity. As the largest two-year institution of the University System of Georgia, Georgia Perimeter College serves a distinctively diverse student population with students from all over the nation and from 123 foreign countries speaking a broad range of different languages.

Our accomplishments this year are highlighted by this *Fact Book*. I congratulate all our faculty and staff whose dedication and work have made all these possible.

The *Fact Book* contains more than a history and an assemblage of facts. It is a "snapshot" of GPC in our continuation of excellence in higher education. It is a book about who we are and where we are going. The *Fact Book* portrays a fascinating college that is blessed with industrious, committed students, faculty, and staff.

Sincerely,



Dr. Jacquelyn M. Belcher  
President, Georgia Perimeter College



## Table of Contents (Continued)

---

High Schools Attended by 100 or More, 1998-99	48
International Student Enrollment I, Fall 1995-99	49
International Student Enrollment II, Fall 1995-99	50
Retention Rate, Fall 1998-99; Enrollment by Class Size, FY 1987-99	51
Student Financial Aid Awarded by Source, FY 95-99	52
Entering Freshman Average SAT & High School GPA, FY 1993-97	53
Applications Received, Fall 1995-1999; Testing Activities, FY 1995-99	54
Transfer Activities, FY 1996-99	55
Comparison with Other USG 2-Year Colleges, Fall 99	56
Athletics, FY 1999	57
<b>FUNDING AND FACILITIES</b>	<b>59</b>
Student Tuition and Fees, FY 1998-2000	61
Revenues and Expenditures Per Student, FY 1996-2000	62
Budget Allocations, FY 1996-2000	63
Library Collections, FY 1995-99	64
Classrooms in Use by Campus, Day and Hour, Fall 1999	65
Average Weekly Percentage of General Classrooms in Use by Hour, Fall 1994-1998	66
Buildings, Improvement & Renovations, FY 98-99	67

## EMPLOYEES

69

Full-Time Employees by EEO Classification, FY 1996-2000	71
Corps of Instruction-All Campuses, Fall 1999	72
Highest Earned Degree, Full-Time Teaching Faculty, Fall 1999	73
Faculty Distribution by Rank and Race, Fall 1995-99	74
Faculty Distribution by Tenure Status, Fall 1995-99	75
Tenure Status by Academic Area, Gender & Race, Fall 1999	76
Faculty Workload by Area, Fall 1998 vs 1999; By Campus, Fall 1999	77

## REFERENCES

79

Quick Reference I for Georgia Perimeter College	81
Quick Reference II for Georgia Perimeter College	82
A Directory for Georgia Perimeter College	83



# Organization

---



# Mission Statement

---

A community committed to learning and to becoming a preeminent associate degree-granting institution, the faculty, staff, administrators and students of Georgia Perimeter College share the following aspirations:

- To gain national recognition as a community of learners,
- To assume a national leadership role in developing creative, technologically-advanced academic and student services programs,
- To serve as a model for other institutions in developing collaborative partnerships to deliver public services, technical assistance, lifelong learning and economic development training.

A regional, multi-campus unit of the University System of Georgia, Georgia Perimeter College strives to meet the changing expectations of our diverse collegiate and community constituencies by providing effective, innovative, lifelong educational opportunities. We are committed to diversity, continuous improvement, high academic standards and the efficient use of resources. In decision-making at all levels, the enhancement of our students' lives is our first priority.

Georgia Perimeter College, a nonresidential institution, serves diverse populations of traditional and nontraditional students in Greater Metropolitan Atlanta.

Placing learning first, we provide accessible and affordable high quality undergraduate credit and non-credit programs for students seeking to complete an associate degree, transfer to a senior college or university, prepare for immediate entry into a career, pursue personal goals or enhance current workplace skills. Our curriculum specializes in liberal arts and professional preparation and promotes international and intercultural understanding. We also serve the broader community as an educational, cultural and economic resource.

Our academic programs and student support services focus on careful assessment of our learners' abilities, achievements and needs; accommodations of their special requirements and resources; and guidance in the development and realization of their expectations and goals. We thus offer specialized sequences of courses and support programs that promote academic and personal success for students of varying levels of academic preparation. We encourage excellence in teaching, provide a technologically advanced learning environment, support innovative strategies for meeting the learning styles of all students and promote learning by engaging students actively and collaboratively.

## Mission Statement (Continued)

---

In meeting the educational needs of the citizens of Georgia for the 21<sup>st</sup> century, we share with all other institutions in the University System of Georgia the following characteristics:

- A supportive campus climate, necessary services and leadership and development opportunities, all to educate the whole person and meet the needs of students, faculty and staff
- Cultural, ethnic, racial and gender diversity in the faculty, staff and student body, supported by practices and programs that embody the idea of an open, democratic and global society
- Technology to advance educational purposes, including instructional technology, student support services and distance education
- Collaborative relationships with other System institutions, State agencies, local schools and technical institutes, and business and industry, sharing physical, human, information and other resources to expand and enhance programs and services available to the citizens of Georgia.

Georgia Perimeter College shares the following commitments to the citizens of Georgia with other associate-degree level colleges of the University System of Georgia:

- A commitment to excellence and responsiveness within a scope of influence defined by the needs of the local area and by particularly outstanding programs or distinctive characteristics that have a magnet effect throughout the region or state
- A commitment to a teaching/learning environment, both inside and outside the classroom, that sustains institutional excellence, functions to provide University System access for a diverse student body and promotes high levels of student learning
- A commitment to a high quality general education program that supports a variety of well-chosen associate programs and prepares students for transfer to baccalaureate programs, learning support programs designed to ensure access and opportunity for a diverse student body and a limited number of certificate or other career programs to complement neighboring technical institute programs
- A commitment to public service, continuing education, technical assistance and economic development activities that address the needs, improve the quality of life and raise the educational level within the College's scope of influence
- A commitment to scholarship and creative work for the specific purposes of supporting instructional effectiveness and enhancing institutionally relevant faculty qualifications.

# History

---

Founded by the citizens of DeKalb County and the DeKalb Board of Education under the Junior College Act of 1958, Georgia Perimeter College opened in 1964 as the only public junior college in the State supported and controlled by a local Board of Education. It was established in order that any resident of the DeKalb School district who held a high school diploma or its equivalent and who desired to seek two years of post-secondary education might have the opportunity to do so.

The Clarkston Campus opened in 1964 serving as the main and also the first campus of the College. The College's Decatur Campus opened in 1972. Also beginning in 1972, students enrolled in DeKalb Area Technical School were able to enroll dually in vocational and collegiate programs, and the College was designated DeKalb Community College. As growth continued both for DeKalb County and the College, the Dunwoody Campus was added and began operation in 1979. Georgia Perimeter College has pioneered in Georgia in open-door admissions, personalized approaches to instruction and community-related curricula and activities. The College's curricula feature transfer, developmental, career, and continuing education programs. Associate degrees are awarded to graduates who complete the two-year transfer and career programs. The College's academic offerings correspond with curricula content and

requirements of the University System of Georgia. The College also serves as a community cultural center for the performing arts in music and drama.

In 1985, DeKalb Vocational-Technical School was placed under the governance of a new state-wide board for vocational-technical schools. Students enrolled in specific Associate in Applied Science degree programs continue, however, to enroll dually in the College and technical school, now known as DeKalb Technical Institute.

Designed to be readily responsive to the educational needs of the community, Georgia Perimeter College began offering dual programs in cooperation with Lawrenceville Technical Institute in the fall of 1987. In addition, Georgia Perimeter College offers at its Lawrenceville Campus a broad range of courses to students seeking Associate in Arts or Associate in Science degrees. During spring 1993, Georgia Perimeter College, in cooperation with Clayton State College, DeKalb Technical Institute and Rockdale County Public Schools, formed the Rockdale Center for Higher Education, which offers both credit and non-credit courses.

Source: Georgia Perimeter College's Web page  
[www.gpc.peachnet.edu/News\\_and\\_information/about.html](http://www.gpc.peachnet.edu/News_and_information/about.html)

# Board of Regents

---

## Board of Regents

The Board of Regents (BOR) of the University System of Georgia (USG) is composed of 16 members appointed by the Governor and confirmed by the Senate for seven-year terms. One member is appointed from each of the 11 congressional districts, and five are appointed from the state at large. The BOR exercises broad jurisdiction over all institutions of USG and establishes policies and procedures under which they operate. The BOR receives all state appropriations for the USG and allocates these appropriations to the institutions and institution-related agencies. While the BOR engages in both policy-making and administrative functions, each unit of the System has a high degree of academic and administrative autonomy.

The System currently includes 35 institutions: four research universities, two regional universities, 11 state universities, two state colleges, 15 two-year colleges and one independent research unit. These institutions are both distinctive and interrelated. They are geographically dispersed so that approximately 96 percent of the people in Georgia reside within 35 miles of at least one university or college.

Georgia Perimeter College is an associate degree-granting college of the University System of Georgia.

## Members and Terms of the BOR

- **Baranco, Juanita Powell**  
(01/01/98-01/01/05)
- **Cannestra, Kenneth W.**  
(02/08/94-01/01/01)
- **Carter, Hugh A.**  
(08/08/00-01/01/02)

- **Cater, (Mr.) Connie**  
(06/18/99-01/01/06)
- **Harris, Joe Frank**  
(06/18/99-01/01/06)
- **Howell, Hilton H., Jr. (V. Chair)**  
(06/15/98-01/01/04)
- **Hunt, John**  
(01/07/97-01/01/04)
- **Jenkins, Edgar L.**  
(01/14/94-01/01/01)
- **Jones, Charles H.**  
(01/04/95-01/01/02)
- **Leebern, Donald M., Jr.**  
(01/01/98-01/05/05)
- **McMillian, Eldridge W.**  
(01/01/96-01/01/03)
- **NeSmith, Martin W.**  
(06/18/99-01/01/06)
- **White, Glenn S. (Chair)**  
(01/01/98-01/01/05)
- **Wooten, Joel O., Jr.**  
(06/18/99-01/01/06)
- **Yancey, James D.**  
(06/18/99-01/01/07)



# Chief Executive Officer, Vice Presidents, and Provosts

---

## Chief Executive Officer

The President of Georgia Perimeter College is the chief executive and administrative officer. The President is appointed by the Board of Regents and is directly responsible to the BOR for the conduct of the institution, the development of institutional goals, the formulation of policies and the overall well being of the College.

### The President of GPC

Dr. Jacquelyn M. Belcher  
1995 - present (5<sup>th</sup> president)

### The Past Presidents of GPC

- 1<sup>st</sup>-Thad W. Hollingsworth (1963-1967)
- 2<sup>nd</sup>-James H. Hinson, Jr. (1967-1977)
- 3<sup>rd</sup>-W. Wayne Scott (1977-1982)
- 4<sup>th</sup>-Marvin Cole (1982-1994)
- Martha Nesbitt (Interim 1994)

## The GPC Seal



## The GPC Logo



## Vice Presidents

Ronald L. Carruth, Interim VP,  
Financial Affairs & Administrative  
Services

VP, Academic Affairs, (Vacant)

Myrtle E. B. Dorsey, Ph.D., VP,  
Student Affairs

## Provosts

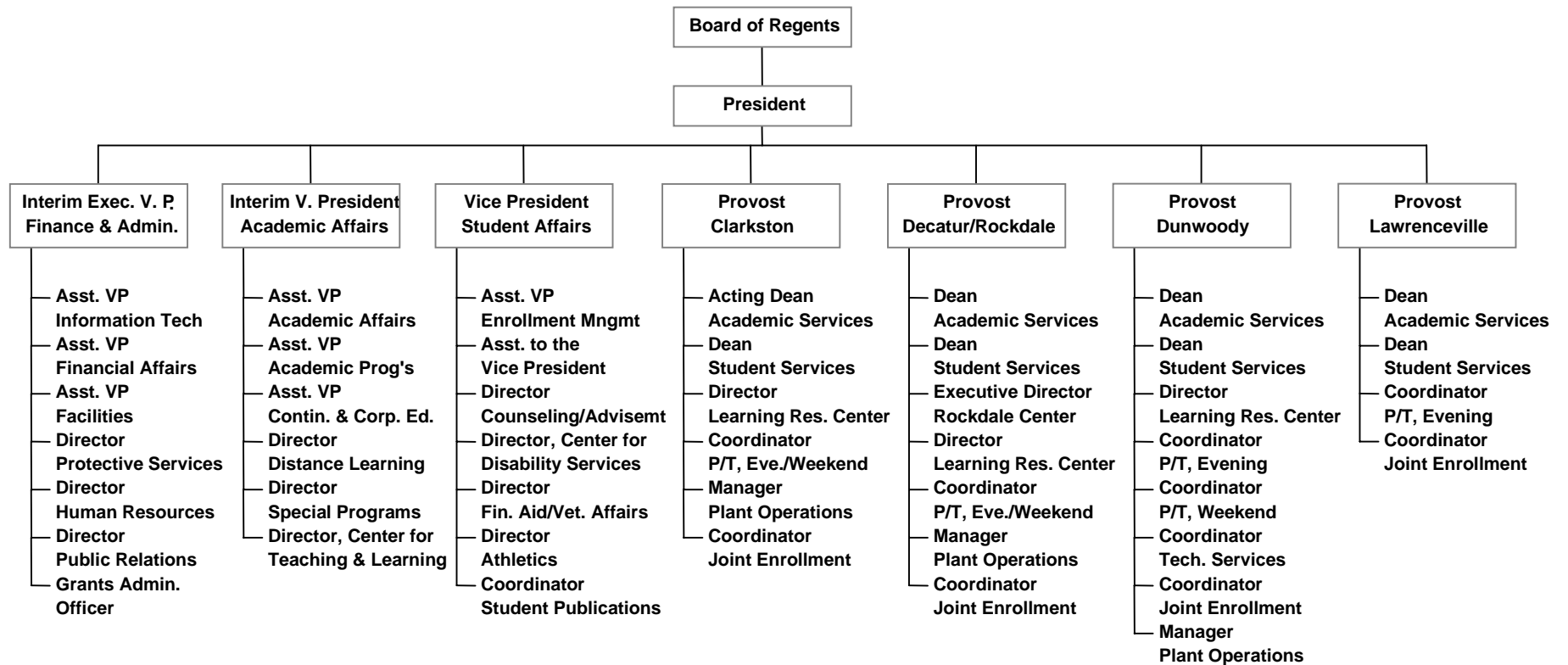
Dennis R. Harkins, Ph.D., Provost,  
Clarkston Campus

Debra L. McCurdy, Ph.D., Provost,  
Dunwoody Campus

Paul Pai, Ed. D., Provost, Decatur  
Campus/Rockdale Center

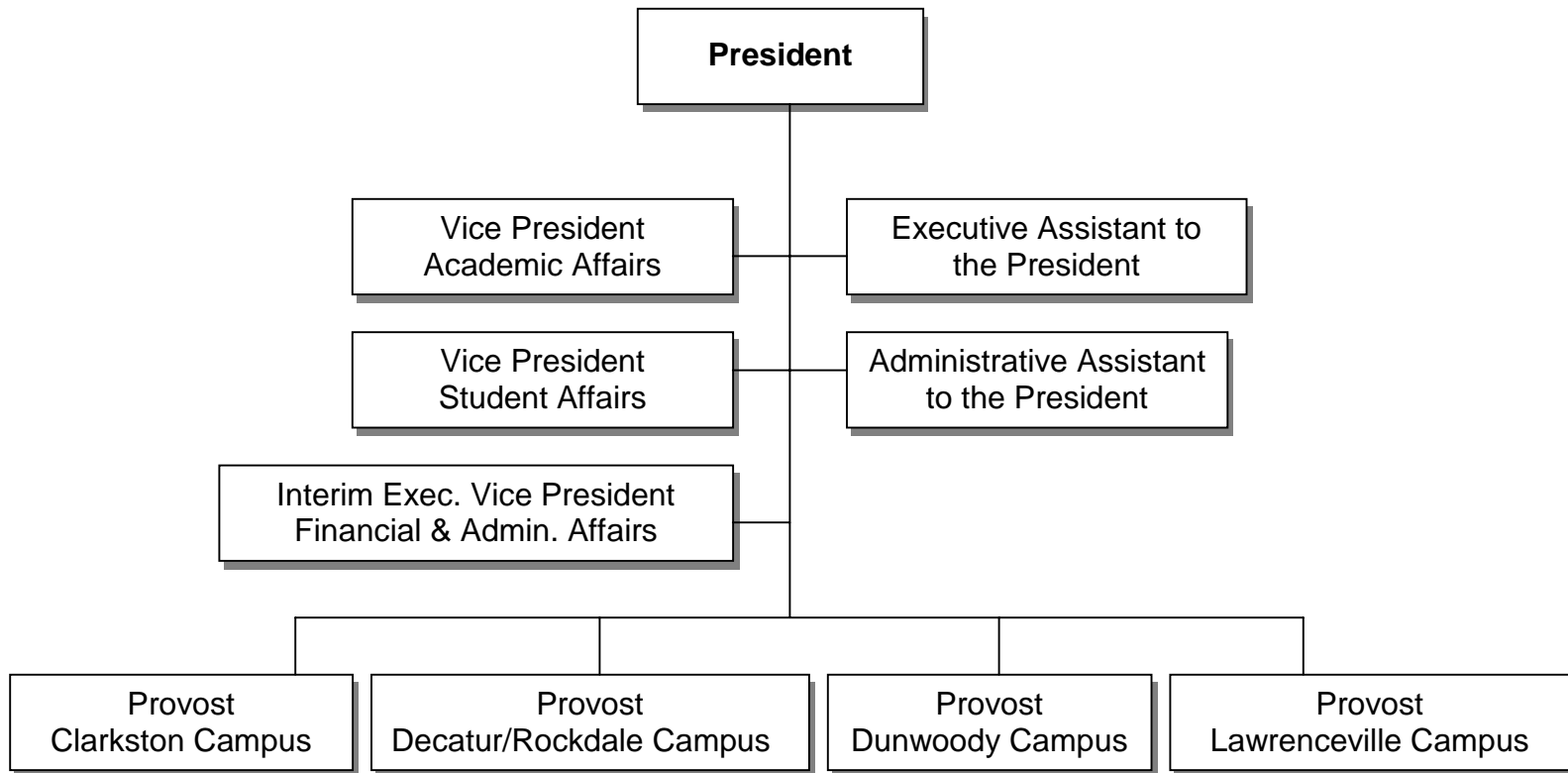
J. Randy Pierce, Ph.D., Provost,  
Lawrenceville Campus

# Administrative Organizational Chart FY 2000

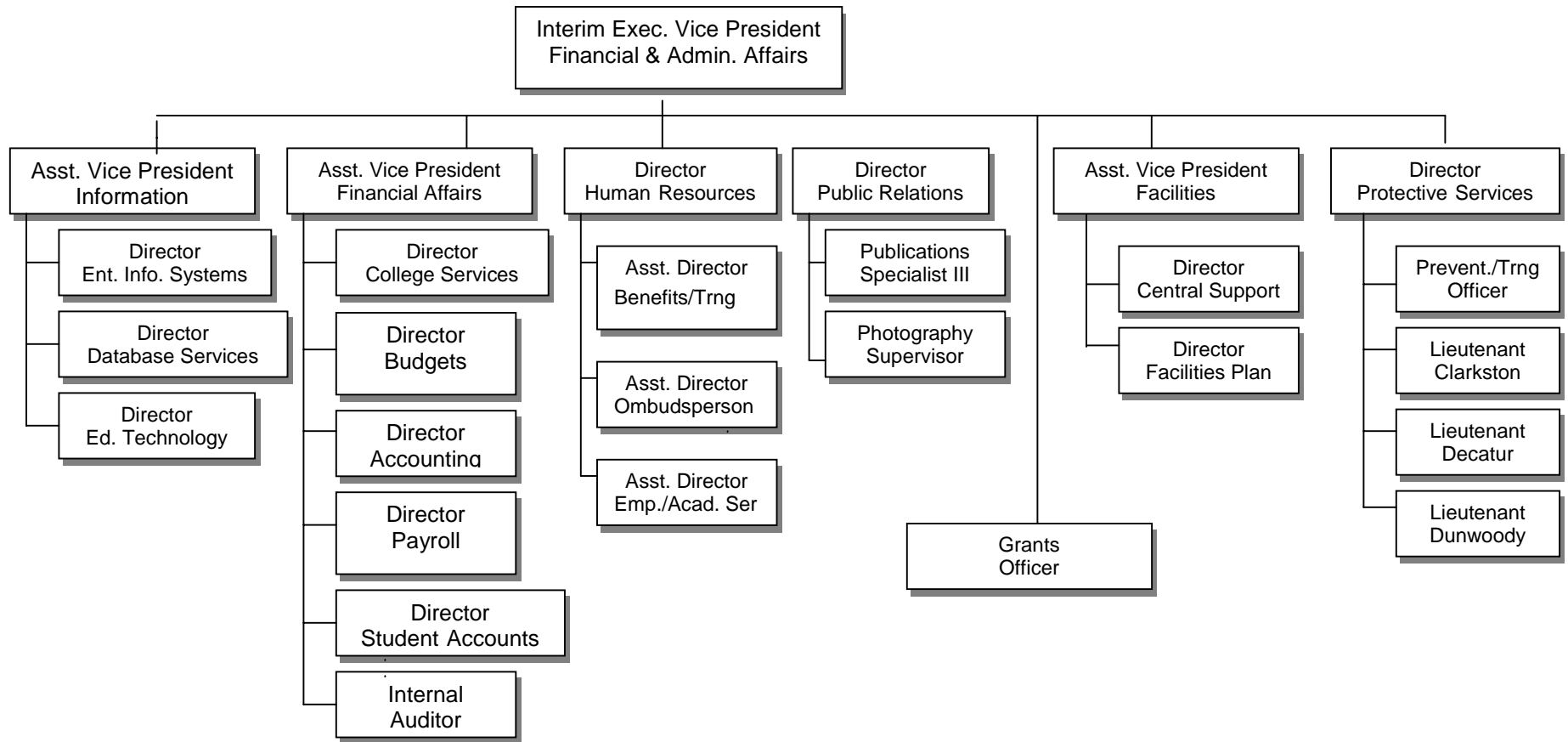


# College District Team FY 2000

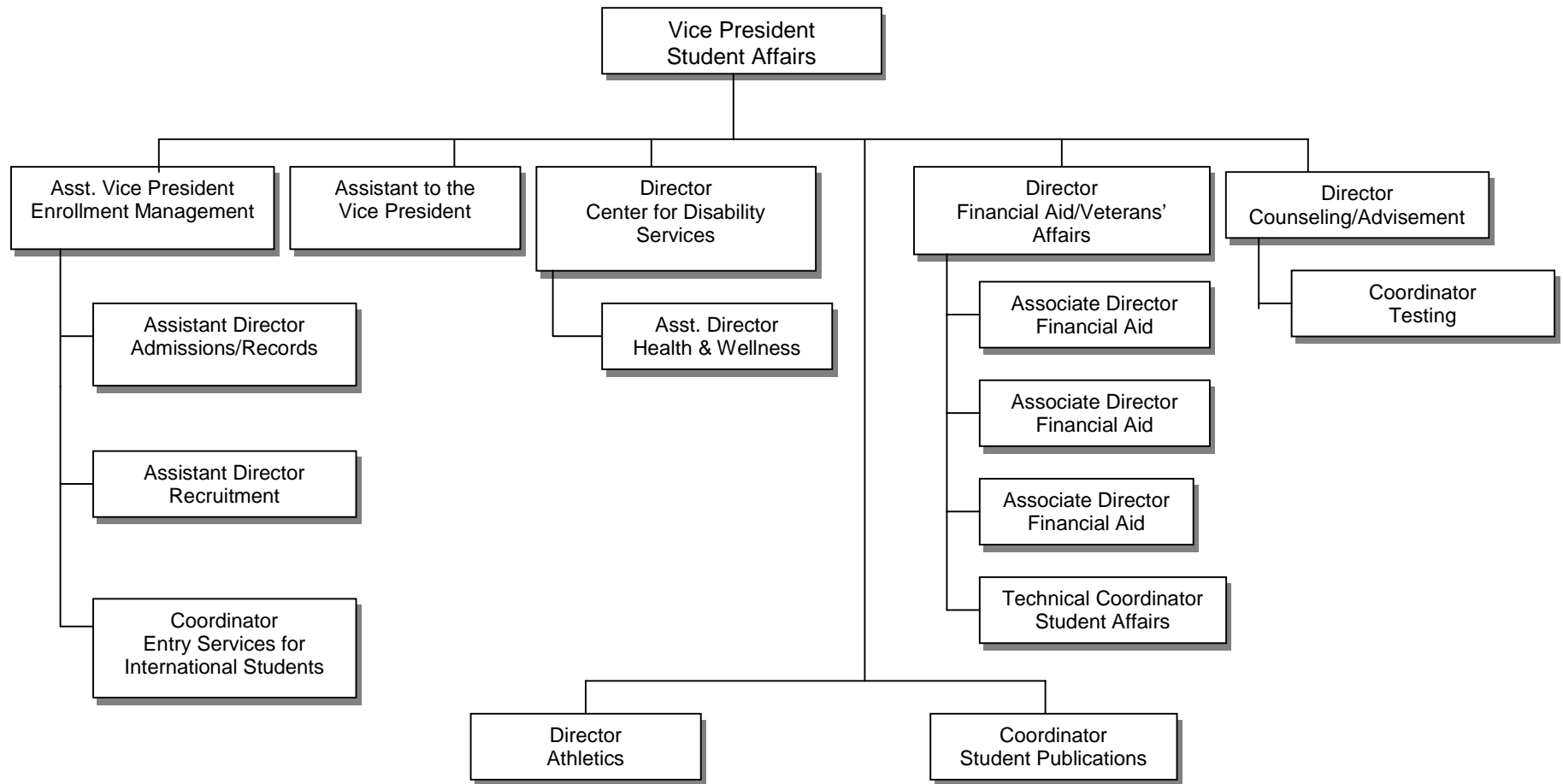
---



# Financial and Administrative Affairs Team FY 2000

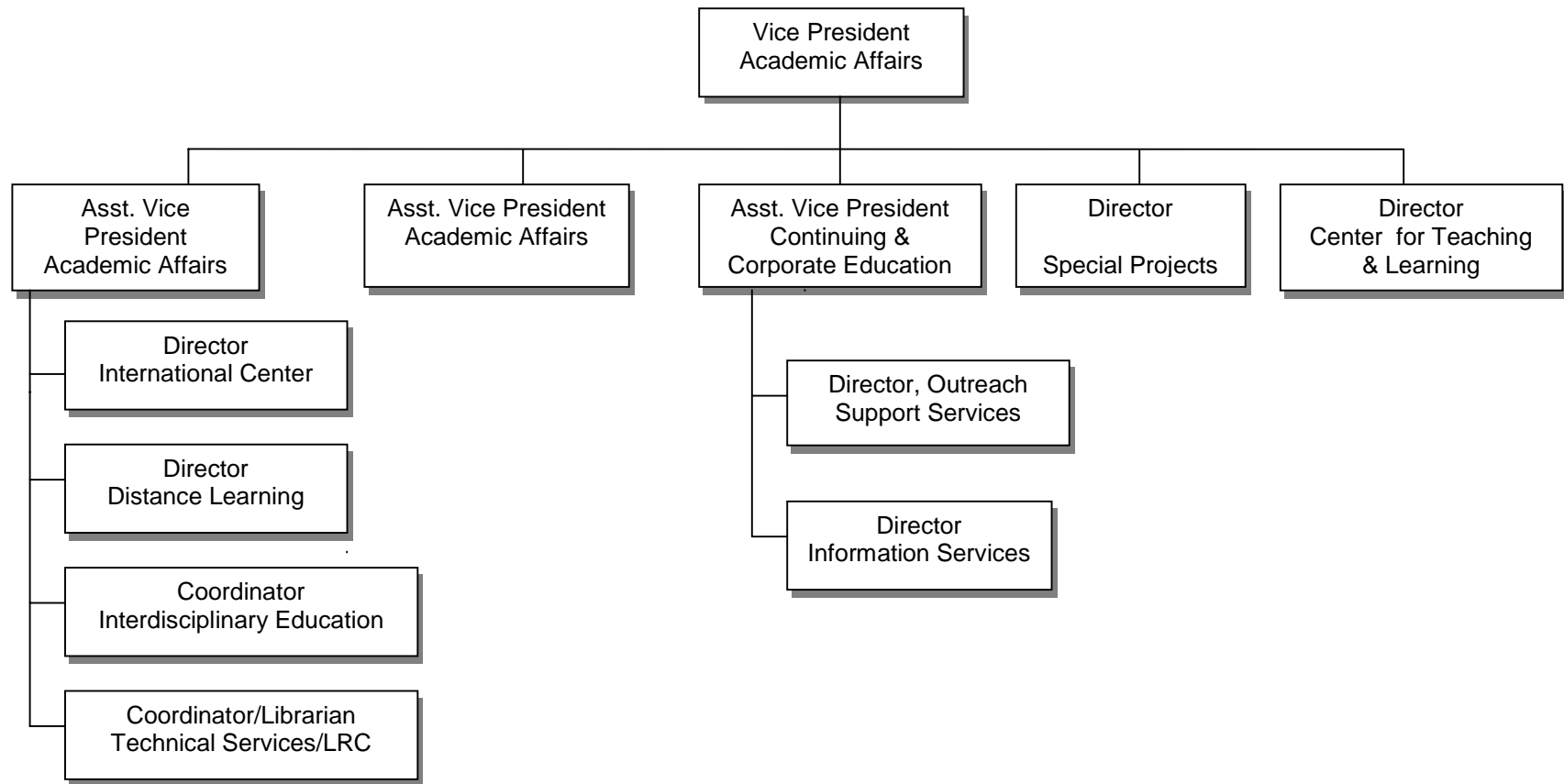


# Student Affairs Team FY 2000

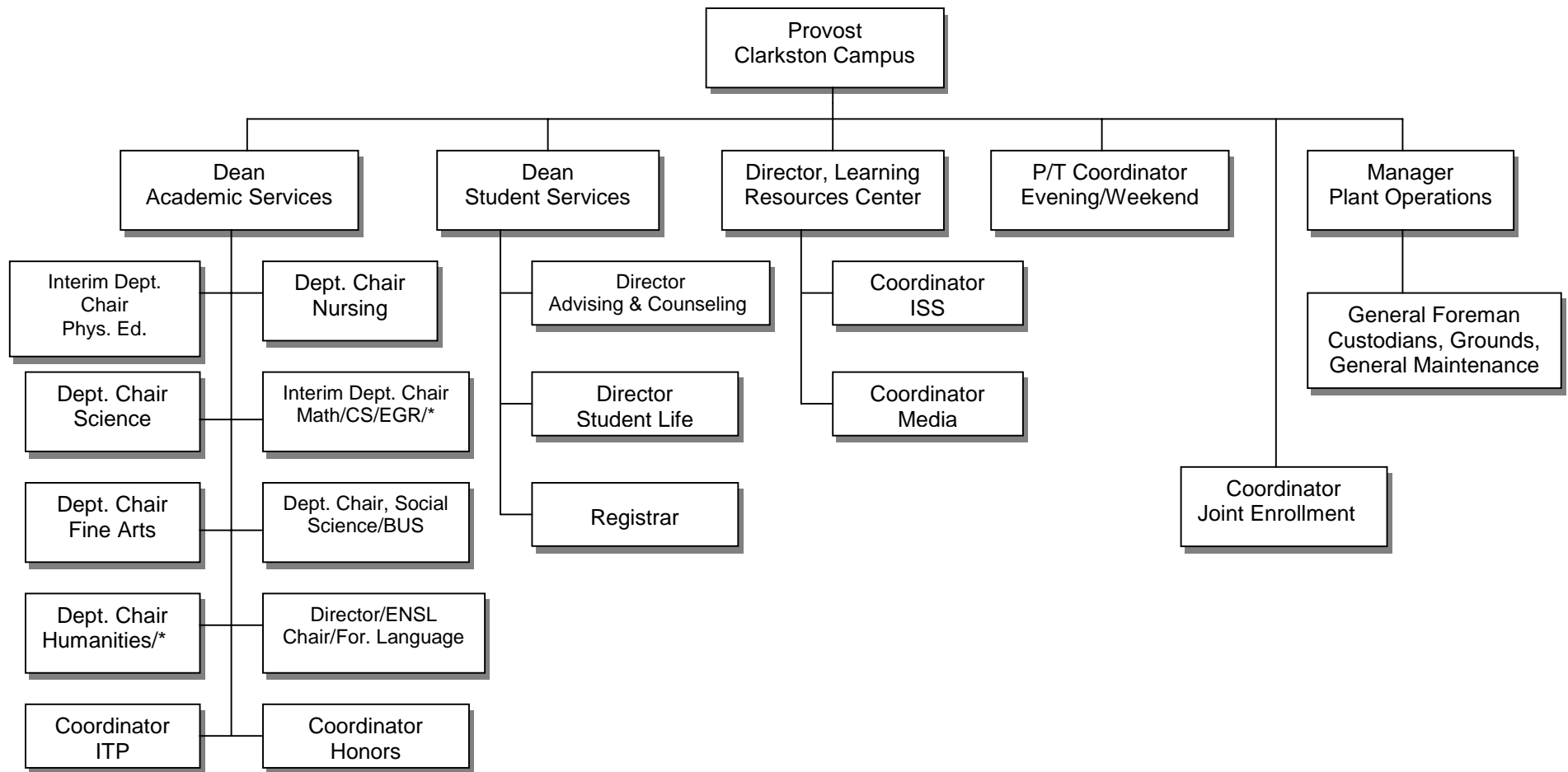


# Academic Affairs Team FY 2000

---

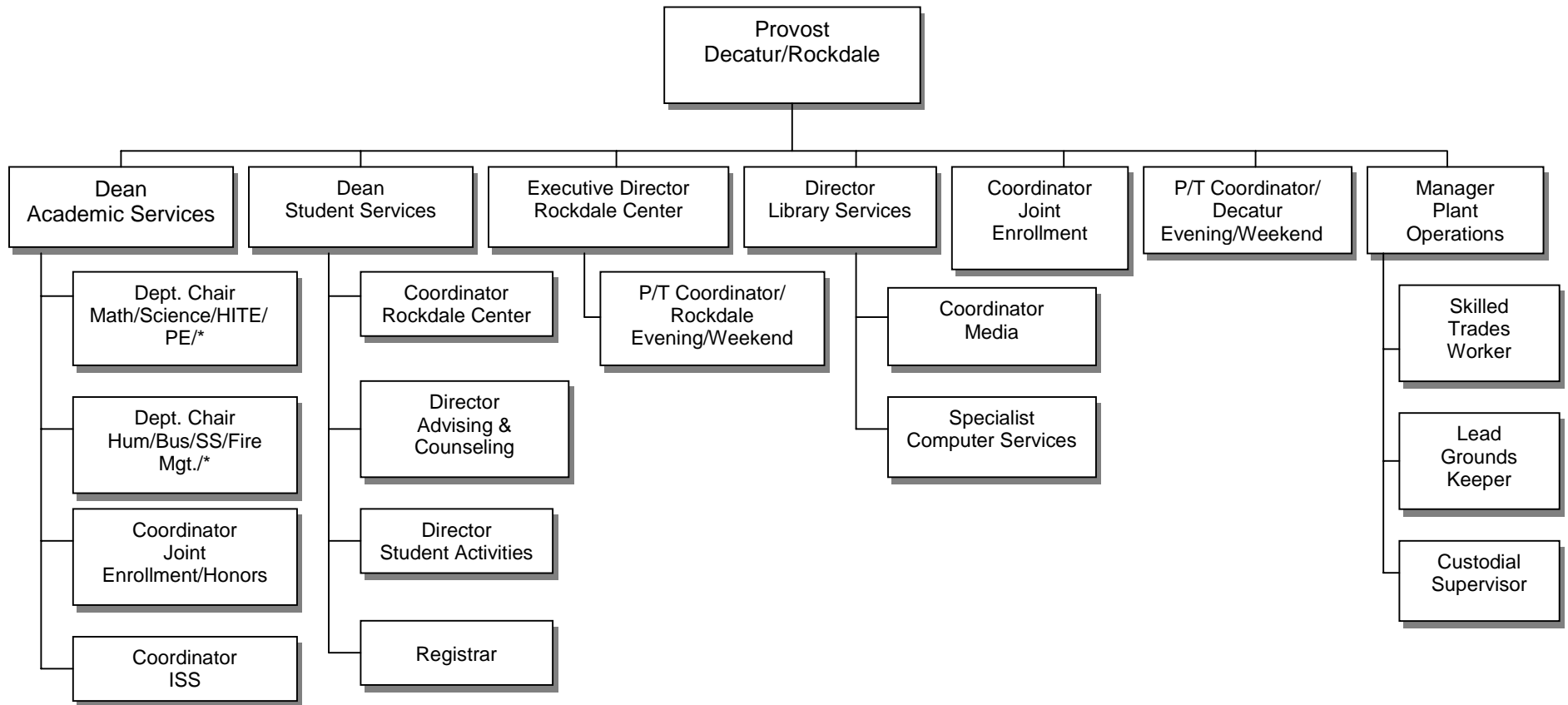


# Clarkston Campus Team FY 2000



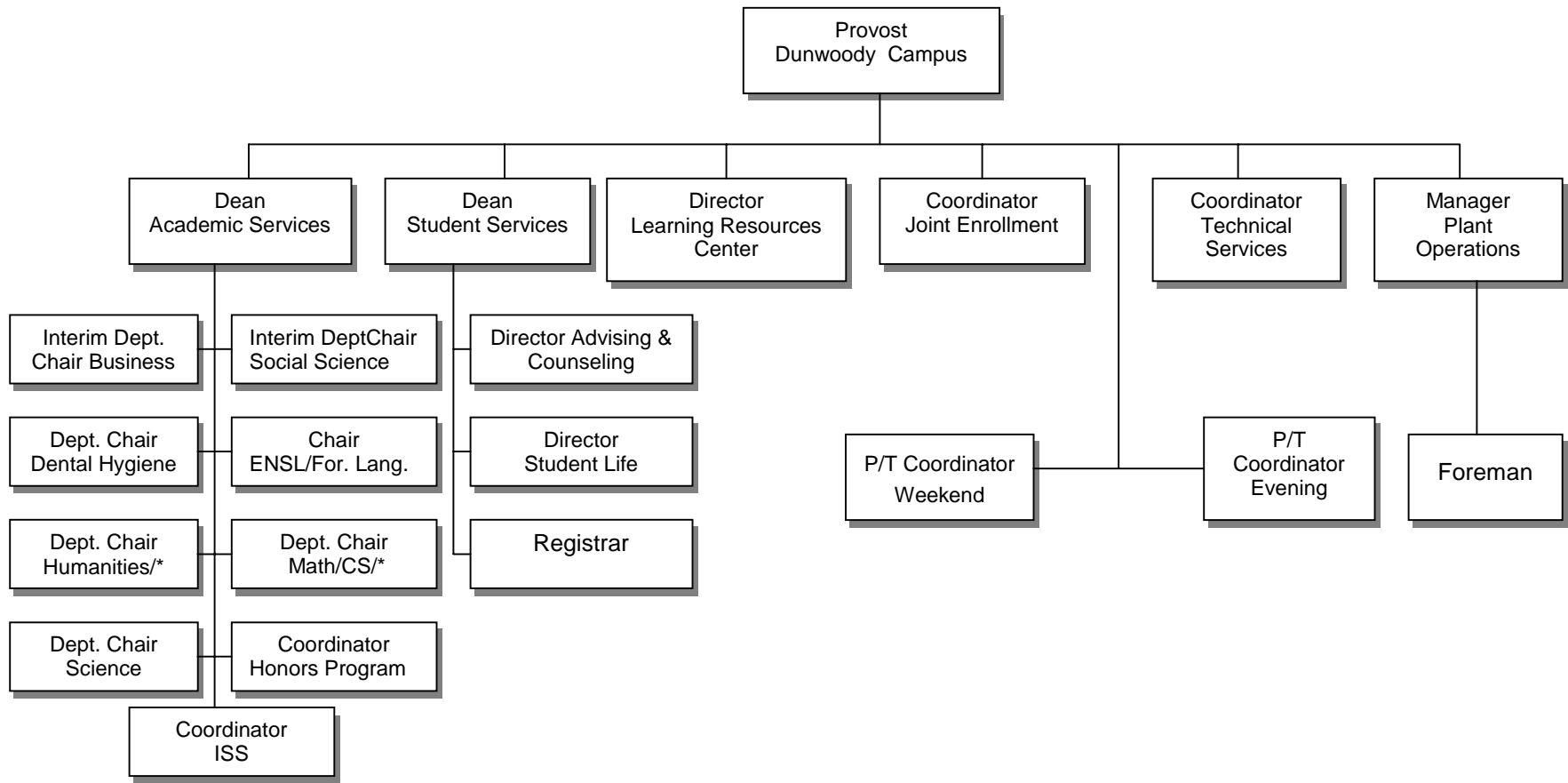
\*Includes the appropriate Learning Support Courses

# Decatur Campus/Rockdale Center Team FY 2000



\*Includes the appropriate Learning Support Courses

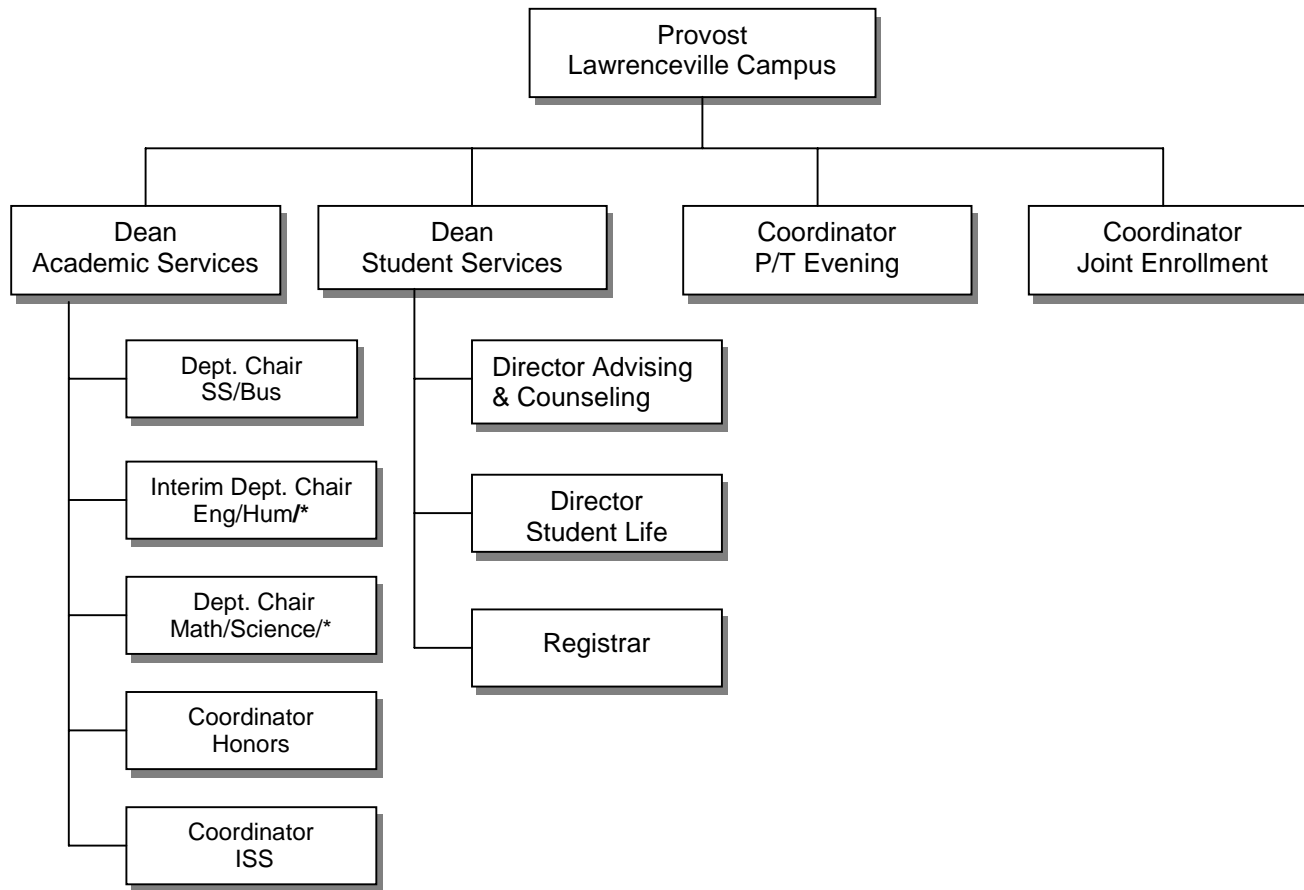
# Dunwoody Campus Team FY 2000



\*Includes the appropriate Learning Support Courses

# Lawrenceville Campus Team FY 2000

---



\*Includes the appropriate Learning Support Courses

# Geographic Locations of the GPC Campuses

---

Alpharetta Center  
3705 Brookside Pkwy  
Alpharetta, GA 30022

Clarkston Campus  
555 North Indian Creek Dr.  
Clarkston, GA 30021-2396

Decatur Campus  
3251 Panthersville Rd.  
Decatur, GA 30034-3897

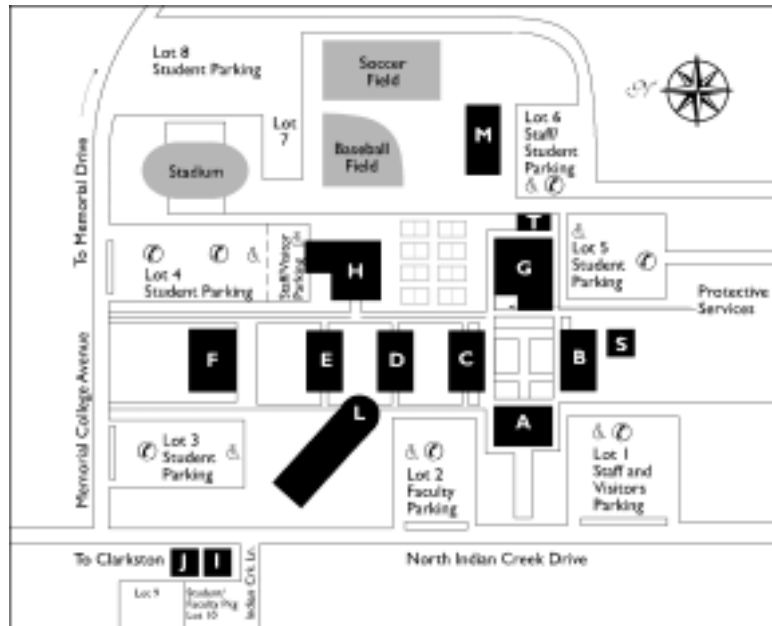
Dunwoody Campus  
2101 Womack Rd.  
Dunwoody, GA 30338-4497

Lawrenceville Campus  
5155 Sugarloaf Pkwy  
Lawrenceville, GA 30043

Rockdale Center for Higher Education  
1115 West Ave.  
Conyers, GA 30012



# Maps of Clarkston and Decatur Campuses



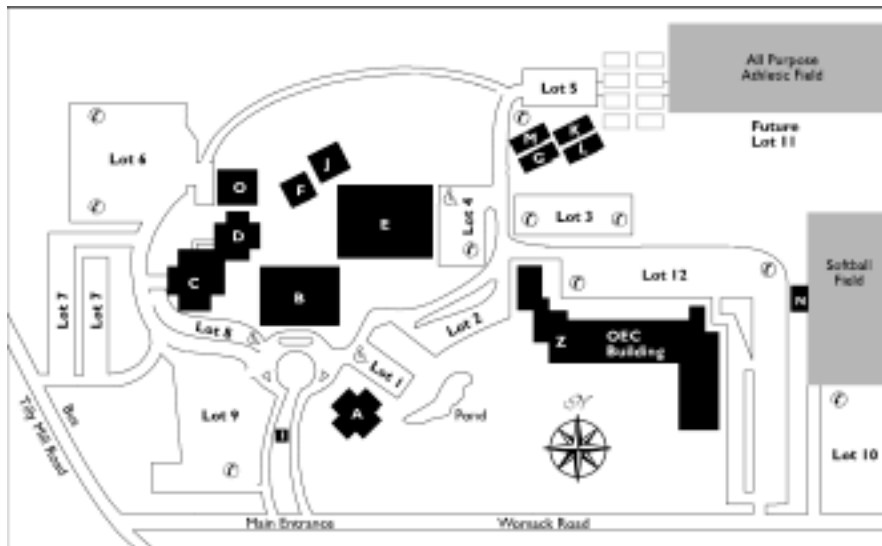
- A** Administration
- B** Student Center
- C** Science Building
- D** Classroom Building
- E** Humanities
- F** Fine Arts Building
- G** P.E. Building/  
Protective Services
- H** Nursing
- L** Jim Cherry Learning  
Resource Center
- M** Maintenance
- T** OIT/Student Publications
- S** Auxiliary Services
- U** Continuing Education/  
Pre-K

- A** Administration/Library
- B** Classroom Building
- C** Gym/Student Center/  
Bookstore
- D** Plant Operations
- E** Academic Greenhouse
- F** Tennis Courts
- G** Protective Services
- H** Modular Classrooms
- I** Modular Classrooms
- J** Modular Classrooms
- K** Modular Classrooms



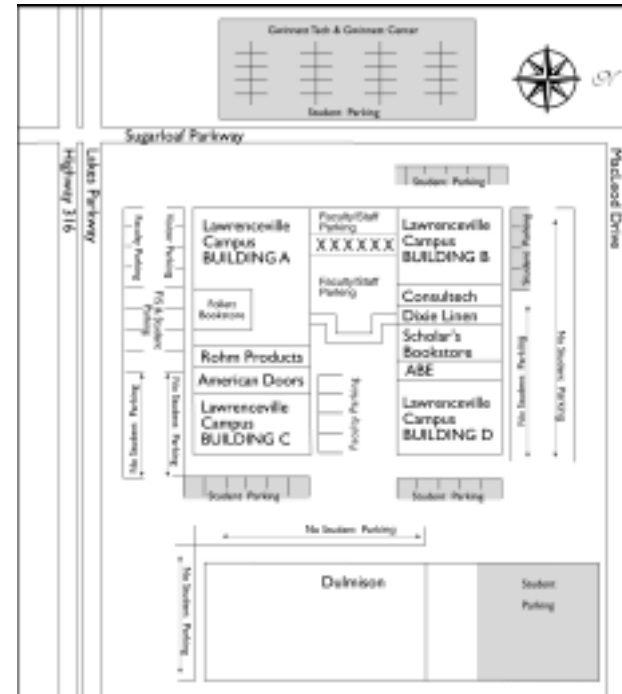
# Maps of Dunwoody and Lawrenceville Campuses

---



**A** Administration/Continuing

**G** Developmental Studies



Education  
**B** Library/Student Affairs/  
Registrar/ACCESS Center  
**C** Science Building/Dental  
Hygiene Clinic  
**D** Classroom Building  
**E** Maintenance  
**F** Shower Facility

**H** Softball Field House  
**I** Protective Services  
**J** P.E. Building  
**K** Faculty Offices  
**L** Faculty Offices  
**M** Offices  
**O** Plant Services  
**Z** OEC Building



# Academics

---



# Academic Programs Offered, FY 2000

---

Accounting (AAS) 2  
Advanced Machine Tool Technology (AAS) 2  
Anthropology (AA)  
Arts (AA)  
Arts (AS)  
Biology (AA) (M)  
Business Administration (AS)  
Business and Office Technology (AAS) 1,2  
Chemistry (AA) (M)  
Commercial Photography (AAS) 2  
Computer Information Systems (AAS) 2  
Computer Programming (AAS) 1  
Computer Science (AS) (M)  
Dental Hygiene (Career) (AS)  
Dental Assisting (AAS) 2  
Drafting (AAS) 2  
Electronics Technology (AAS) 1  
Engineering (AS) (M)  
English (AA)  
Environmental Horticulture (AAS) 2  
Fire Management (Career) (AAS)  
Foreign Language (AA)  
General Studies (AS)  
Geology (AA) (M)  
Health and Physical Education (AS) 3  
History (AA)  
Hotel, Restaurant & Travel Mgmt (AAS) 2  
Industrial Maintenance Technology (AAS) 1  
Industrial Technology (AAS) 2  
Interiors (AAS) 2

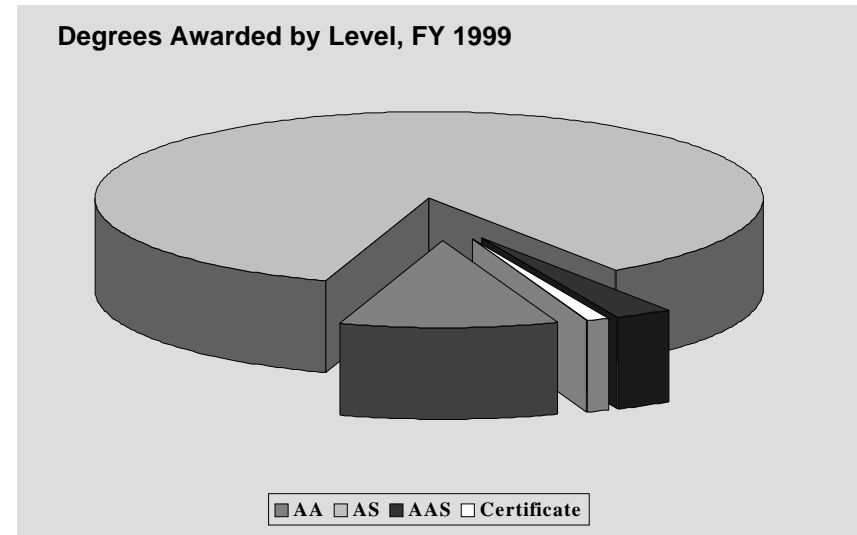
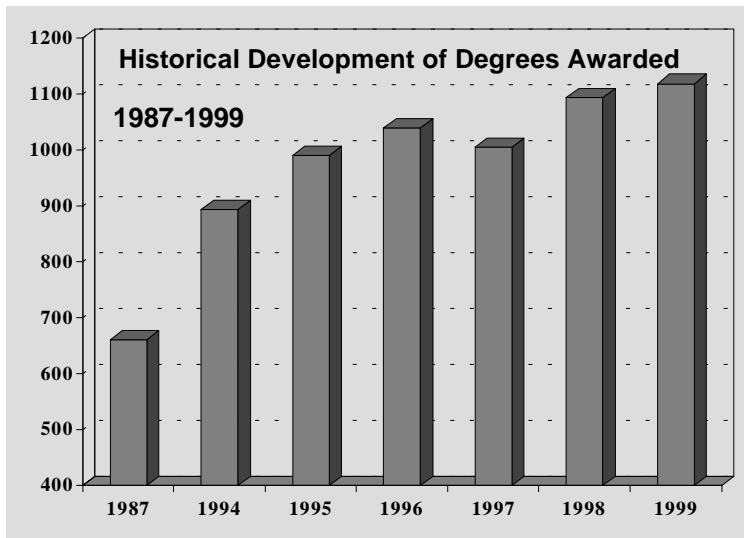
Interpreter Training (Career) (AAS)  
Journalism (AA)  
Marketing Management (AAS) 1,2  
Mathematics (AA) (M)  
Medical Assisting (AAS) 1,2  
Medical Laboratory Technology (AAS) 1  
Microcomputer Specialist (AAS) 1  
Music (AS)  
Nursing (Career) (AS)  
Paramedic Technology (AAS) 2  
Philosophy (AA)  
Physical Therapist Assistant (AAS) 2  
Physics (AA) (M)  
Political Science (AA)  
Pre-Dentistry/Pre-Medicine/Pre-Pharmacy (AS) (M)  
Psychology (AA)  
Psychology (AS)  
Radiological Technology (AAS) 2  
Respiratory Therapy (AAS) 2  
Sociology (AA)  
Surgical Technology (AAS) 1,2  
Teacher Education (AS)  
Theatre (AA)

**Note:** AA= Associate of Arts Degree  
AS= Associate of Science Degree  
AAS= Associate of Applied Science Degree  
M= math-based major  
1=Dual Degree program with DeKalb Technical Institute  
2=Dual Degree program with Gwinnett Technical Institute  
3=Teacher Option Available

# Degrees Awarded Summary, FY 1987-1999

Degrees Awarded by Level and Fiscal Year, GPC, FY 1987-1999

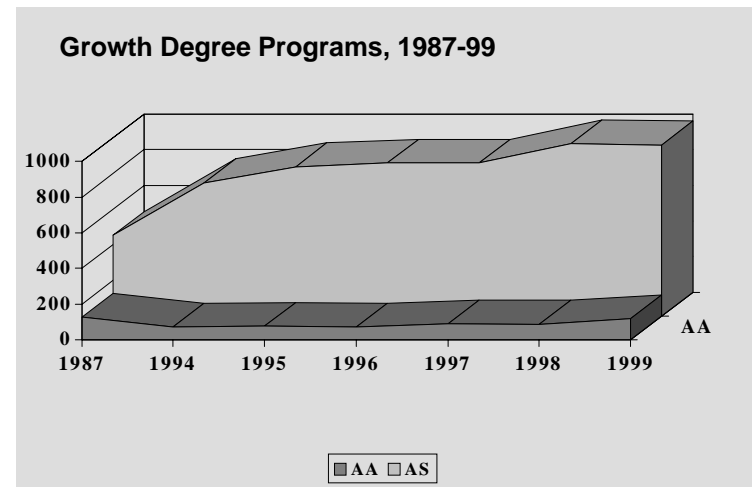
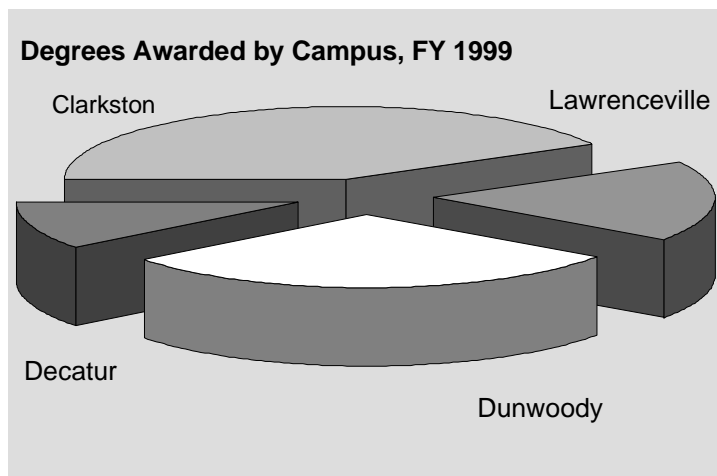
Degree Level	1987	1994	1995	1996	1997	1998	1999
Associate of Arts (Core Curriculum)	127	70	77	73	89	88	117
Associate of Science	452	747	837	860	860	965	959
Associate of Applied Science	82	74	69	104	52	34	31
Certificate		3	8	3	4	7	12
<b>Total</b>	<b>661</b>	<b>894</b>	<b>991</b>	<b>1,040</b>	<b>1,005</b>	<b>1,094</b>	<b>1,119</b>



# Degrees Awarded by Campus, FY 1999

Degrees Awarded by Campus, 1999		
Campus	Degrees Awarded	
	#	%
Clarkston	468	41.8
Lawrenceville	199	17.8
Dunwoody	334	29.8
Decatur/Rockdale	118	10.5
<b>Total</b>	<b>1,119</b>	<b>100.0</b>

Degrees Awarded for two Growth Programs, GPC, FY 1987-1999							
Degree Level	1987	1994	1995	1996	1997	1998	1999
Associate of Arts (Core Curriculum)	127	70	77	73	89	88	117
Associate of Science	452	837	860	860	965	959	

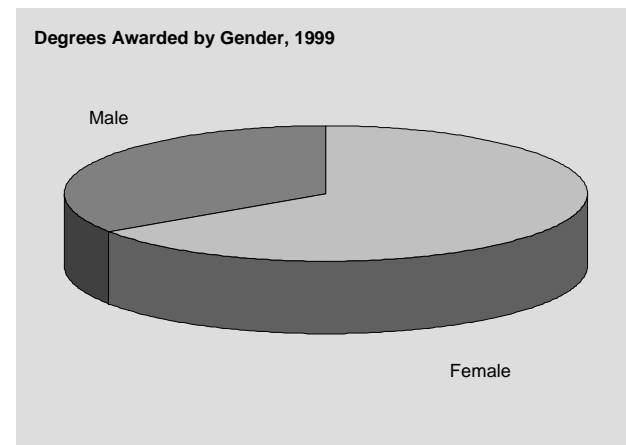
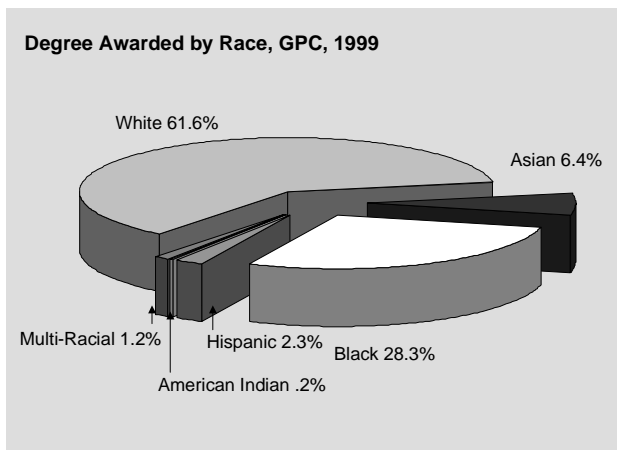


# Degrees Awarded by Ethnicity and Gender, FY 1999

## Degrees Awarded by Ethnicity and Gender, Georgia Perimeter College, FY 1999

	Female		Male		Total	
	#	%	#	%	#	%
Asian	48	66.7	24	33.3	72	6.4
Black	237	74.8	80	25.2	317	28.3
Hispanic	13	50.0	13	50.0	26	2.3
Multi-Racial	7	.6	6	.5	13	1.2
Native American	2	100.0			2	.2
White	445	64.6	244	35.4	689	61.6
<b>Grand Total Awarded</b>	<b>752</b>	<b>67.2</b>	<b>367</b>	<b>32.8</b>	<b>1119</b>	<b>100.0</b>

**Note:** In each cell, there are two numbers, a number of degrees awarded and its percentage of its class. In the last column, "Total" is the number of degrees awarded of that class, and percentage is its percentage of the grand total degrees awarded presented in the last row.



## Degrees Awarded by Major, FY 1999

Degree	Major	#
--------	-------	---

### Associate of Arts

AACC	Anthropology	2
AACC	Art	4
AACC	Biology	9
AACC	Chemistry	4
AACC	Drama-Speech	3
AACC	English	13
AACC	Foreign Language	22
AACC	History	9
AACC	Journalism	16
AACC	Mathematics	4
AACC	Philosophy	1
AACC	Physics	1
AACC	Political Science	7
AACC	Psychology	9
AACC	Sociology	13

<b>Total</b>		<b>117</b>
--------------	--	------------

Certificate	Major	#
-------------	-------	---

CER 1	Interpreter Trng	12
-------	------------------	----

<b>Total</b>		<b>12</b>
--------------	--	-----------

Degree	Major	#
--------	-------	---

### Associate of Science

ASCC	Art	16
ASCC	Business Administration	411
ASCC	Business Education	8
ASCC	Computer Science	15
ASCC	Engineering	4
ASCC	Forestry	1
ASCC	General Studies	139
ASCC	Health & Physical Education	10
ASCC	Office Admin.	1
ASCC	Pre-medicine	6
ASCC	Pre-pharmacy	4
ASCC	Psychology	67
ASCC	Teacher Education	120
ASCC	Urban Life	16

<b>Total</b>		<b>818</b>
--------------	--	------------

Degree	Major	#
--------	-------	---

### Associate of Applied Science

AASBA	Information & Office Technology	1
AASBA	Hotel, Restaurant & Travel Mgmt.	2
AASBA	Microcomputer	2
AASBA	Marketing Mgmt	3
AASBA	Medical Lab. Technician	3
AASHC	Medical Assisting	1
AASHC	Physical Therapist Asst.	2
AASHC	Surgical Tech.	1
AASIT	Interpreter Training.	9
AASTC	Drafting	2
AASTC	Electronic Tech.	2

<b>Total</b>		<b>21</b>
--------------	--	-----------

### Career Program

ASDH	Dental Hygiene	24
ASN	Nursing	117

<b>Total</b>		<b>141</b>
--------------	--	------------

## Course Profiles, FY 1998

Instructional Program Area	Number of Courses Taught	Number of Sections Taught	Average Section Size	QCH Produced #	%
Allied Health & Health Sciences	47	56	35	10,888	2.06%
Basic Skills	19	1,027	19	94,918	17.92%
Business/Management/Office	8	395	21	42,260	7.98%
Communications	5	15	16	900	0.17%
Computer & Information Science	6	53	16	4,265	0.81%
Education	16	93	12	5,312	1.00%
Engineering	3	8	11	405	0.08%
Foreign Languages	52	297	13	19,325	3.65%
Leisure & Recreational Activity	40	405	19	18,522	3.50
Letters	17	757	18	69,780	13.17%
Liberal/General Studies	9	288	19	27,045	5.10%
Life Sciences	18	414	21	26,269	4.96%
Mathematics	16	554	24	65,282	12.32%
Personal Awareness	1	56	6	2,931	0.55%
Physical Sciences	36	512	22	34,146	6.45%
Protective Services	1	2	5	45	0.01%
Social Sciences	32	771	25	95,530	18.03%
Visual & Performing Arts	125	364	14	11,957	2.26%
<b>Total</b>	<b>457</b>	<b>6,067</b>	<b>20</b>	<b>529,780</b>	<b>100.00%</b>

**Source:** Board of Regents, *USG Facilities, Curriculum, and Room Use Reporting*

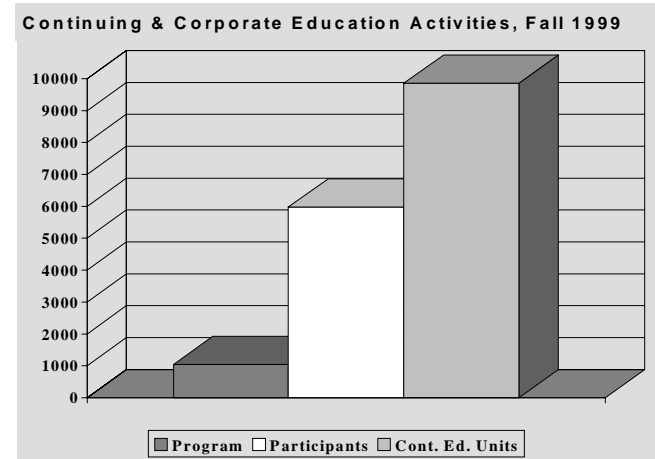
**Note:** FY 1999 data not available at present time

# Continuing and Corporate Education, Fall 1995-1999

Life Enrichment

Category	1995	1996	1997	1998	1999
<b>PROGRAMS</b>					
Job Skill Trng	878	989	911	1,181	906
Life Enrichment	331	298	263	219	112
Public Services*	123	119	NA	NA	NA
<b>Total</b>	<b>1,282</b>	<b>1,406</b>	<b>1,174</b>	<b>1,400</b>	<b>1,048</b>
<b>Participants</b>					
Job Skill Trng	7,260	6,837	5,899	5,483	5,065
Life Enrichment	3,387	3,057	2,081	1,349	902
Public Services*	7,607	9,560	NA	NA	NA
<b>Total</b>	<b>18,254</b>	<b>19,454</b>	<b>7,980</b>	<b>6,832</b>	<b>5,967</b>
<b>Continuing Education Units</b>					
Job Skill Trng	12,426	11,920	11,836	10,216	8,959
Life Enrichment	2,811	2,897	1,813	1,804	906
Public Services**	NA	NA	NA	NA	NA
<b>Total</b>	<b>15,237</b>	<b>14,817</b>	<b>13,649</b>	<b>12,020</b>	<b>9,865</b>
EFT	254	247	227	200	164

Note: \* Public Services numbers no longer reported, effective FY 97.  
 \*\* Public Services CEU numbers no longer reported, effective FY 97





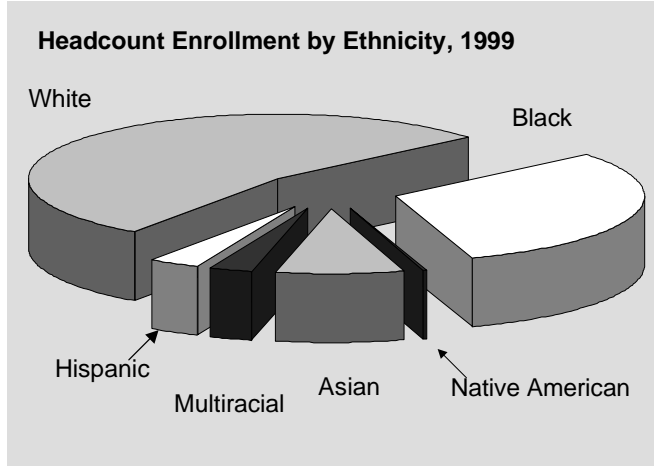
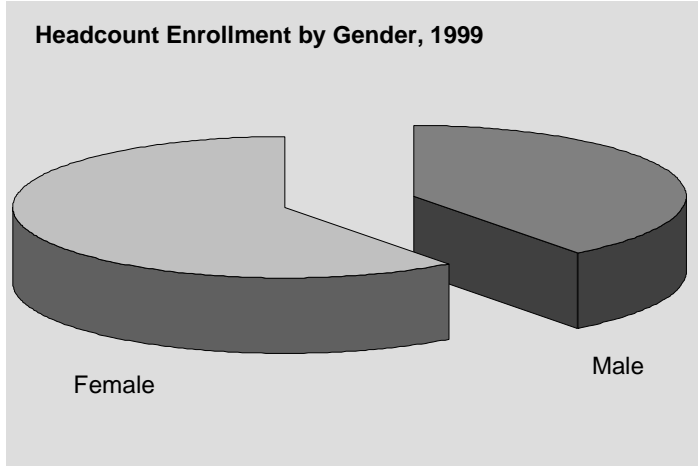
# Students

---



# Enrollment Summary I - GPC All Campuses, Fall 1986/94-99

<b>On-Campus Student Enrollment</b>								
	<b>1986</b>	<b>1994</b>	<b>1995</b>	<b>1996</b>	<b>1997</b>	<b>1998</b>	<b>1999</b>	
Total Headcount	8,786	16,091	16,073	15,690	15,468	14,085	14,091	
Full-Time	35%	35%	35%	38%	40%	35%	39%	
Part-Time	65%	65%	65%	62%	60%	65%	61%	
Equivalent Full-Time	5,777	10,614	10,632	10,653	10,680	8,219	8,253	
<b>On-Campus Student Demographics</b>								
Headcount by Gender:	Male	3,995	6,364	6,248	6,118	6,083	5,533	5,606
	Female	4,791	9,727	9,825	9,572	9,385	8,552	8,485
Headcount by Ethnicity:	Asian	266	959	1,016	1,056	1,041	1,049	1,190
	Black	1,522	4,476	4,792	4,848	4,823	4,372	4,376
	Hispanic	129	330	389	412	424	389	480
	Multiracial				172	272	302	367
	Native American	25	52	49	40	41	30	40
	White	6,844	10,274	9,827	9,162	8,867	7,943	7,638
Others:	Senior Citizens	12	16	11	18	14	16	20
	Non-U.S.	152	1,597	1,828	1,943	1,924	1,881	2,079
	Average Age	24.3	25.3	25.3	25.4	25.4	25.0	24.3
	Median Age		23	23	23	23	22	22

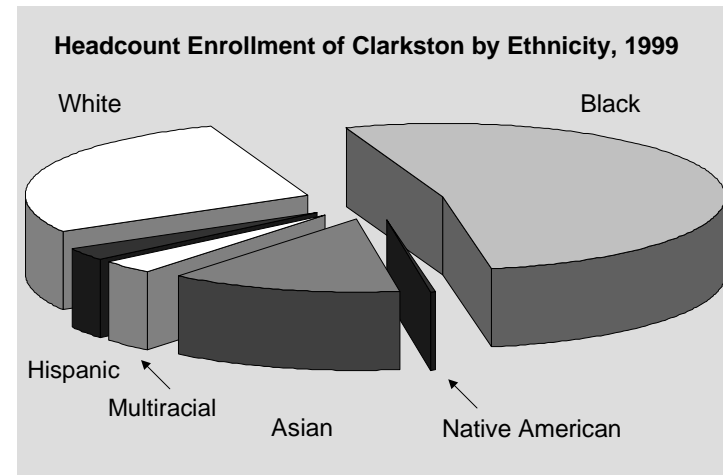
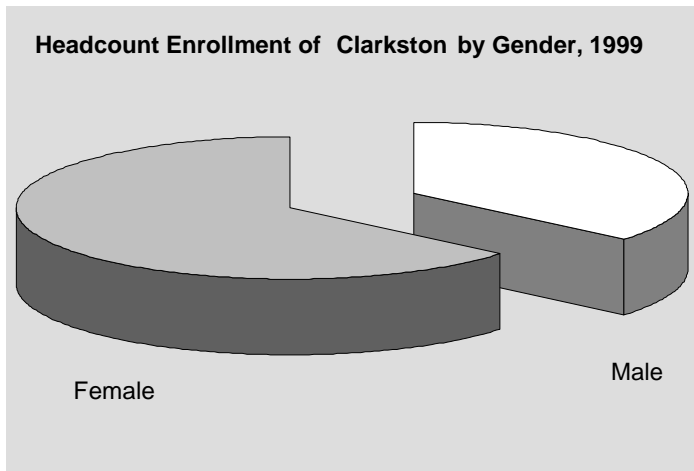


## Enrollment Summary II - GPC All Campuses, Fall 1986/94-99

<b>On-Campus Enrollment by Schedule</b>							
	<b>1986</b>	<b>1994</b>	<b>1995</b>	<b>1996</b>	<b>1997</b>	<b>1998</b>	<b>1999</b>
Day		10,770	10,740	10,991	10,769	10,325	11,488
Evening		6,891	6,967	6,639	6,656	6,345	6,699
Weekend		558	615	658	762	951	2,187
<b>On-Campus Enrollment by Classification</b>							
Learning Support/Developmental Studies	2,250	3,929	4,008	4,113	3,928	3,270	3,476
Joint Enrollment	402	471	590	580	803	876	905
Freshman	3,988	5,257	5,172	5,540	5,099	4,837	4,939
Sophomore	1,825	5,681	5,574	5,118	5,212	4,715	4,342
Transient	166	303	309	263	283	202	241
Unclassified	155	450	420	1	143	185	188
<b>On-Campus New Student Enrollment by Classification</b>							
Learning Support/Developmental Studies	1,124	1,946	1,904	1,849	1,813	1,633	1,793
Joint Enrollment	394	460	574	540	782	861	884
Freshman	246	637	574	982	653	720	822
Transfer	441	957	957	826	743	702	775
Transient	96	122	137	130	113	84	111
Unclassified	46	182	158	0	118	73	105
Total	2,347	4,304	4,304	4,327	4,222	4,073	4,490
<b>On-Campus Students Needing Learning Support</b>							
Math				3,413	3,263	2,815	2,723
English				1,205	1,156	970	1,101
Reading				919	815	781	894
Unduplicated Head Count				4,113	3,928	3,270	3,476
<b>On-Campus Student Enrollment by Residence</b>							
Georgia	8,596	15,139	15,032	14,697	14,531	13,304	13,261
Out-of-State	190	876	944	903	845	667	731
Non-Resident Tuition Waived		76	97	90	92	114	99

# Enrollment of GPC Clarkston Campus I, Fall 1986/94-99

<b>On-Campus Student Enrollment</b>								
	<b>1986</b>	<b>1994</b>	<b>1995</b>	<b>1996</b>	<b>1997</b>	<b>1998</b>	<b>1999</b>	
Total Headcount	4,820	6,798	6,645	6,025	5,615	5,045	4,933	
Full-Time		38%	38%	41%	41%	36%	39%	
Part-Time		62%	62%	59%	59%	64%	61%	
Equivalent Full-Time	3,256	4,239	4,141	3,898	3,680	2,781	2,588	
<b>On-Campus Student Demographics</b>								
Headcount by Gender:	Male	2,183	2,570	2,483	2,248	2,077	1,778	1,786
	Female	2,637	4,228	4,162	3,777	3,538	3,267	3,147
Headcount by Ethnicity:	Asian	229	721	750	747	673	621	660
	Black	984	2,682	2,973	2,915	2,829	2,677	2,599
	Hispanic	84	146	166	147	139	124	133
	Multiracial				67	110	135	151
	Native American	15	27	18	14	15	9	14
	White	3,508	3,222	2,738	2,135	1,849	1,479	1,376
Others:	Senior Citizens	11	12	7	10	6	8	10
	Non-U.S.	134	1,205	1,310	1,330	1,209	1,178	1,199
	Average Age		26.4	26.4	26.4	27.0	26.2	25.9
	Median Age		24	24	24	24	24	23



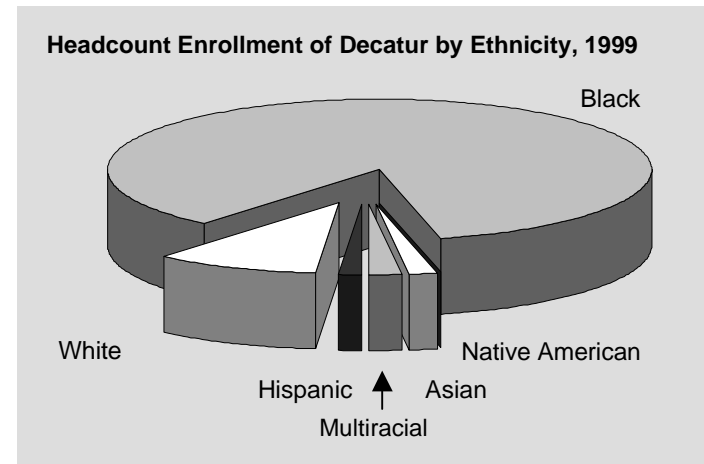
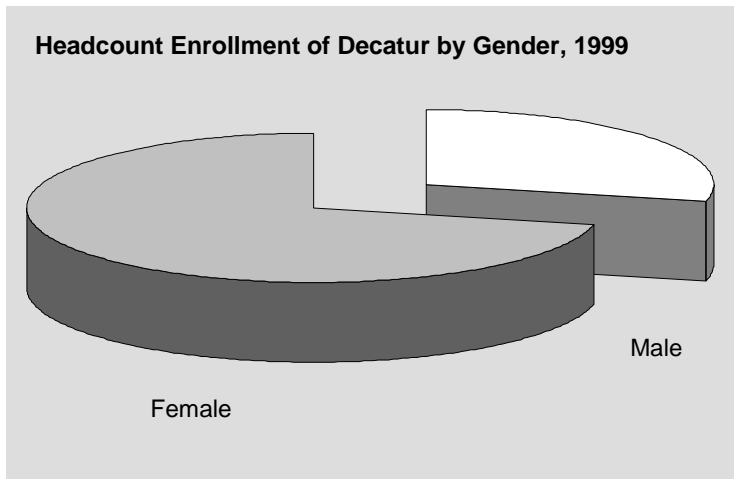
## Enrollment of GPC Clarkston Campus II, Fall 1986/94-99

<b>On-Campus Enrollment by Schedule</b>							
	<b>1986</b>	<b>1994</b>	<b>1995</b>	<b>1996</b>	<b>1997</b>	<b>1998</b>	<b>1999</b>
Day		4,712	4,633	4,636	4,253	3,954	4,024
Evening		2,438	2,484	2,235	2,161	2,124	2,092
Weekend		329	342	392	359	474	844
<b>On-Campus Enrollment by Classification</b>							
Learning Support/Developmental Studies	1,513	1,576	1,603	1,573	1,376	1,188	1,244
Joint Enrollment	95	44	61	51	47	54	53
Freshman	1,746	2,106	2,021	2,044	1,711	1,539	1,557
Sophomore	1,317	2,724	2,609	2,259	2,302	2,105	1,945
Transient	67	132	128	92	114	76	72
Unclassified	82	216	223	0	65	83	62
<b>On-Campus New Student Enrollment by Classification</b>							
Learning Support/Developmental Studies	642	731	683	633	583	534	600
Joint Enrollment	85	41	57	48	42	52	48
Freshman	143	242	193	316	167	192	211
Transfer	192	377	394	293	230	247	267
Transient	36	49	59	49	45	32	32
Unclassified	21	75	75	0	55	29	29
Total	1,119	1,515	1,461	1,339	1,122	1,086	1,187
<b>On-Campus Students Needing Learning Support</b>							
Math				1,297	1,142	1,032	1,059
English				459	400	361	362
Reading				361	304	305	292
Unduplicated Head Count				1,573	1,376	1,188	1,244
<b>On-Campus Student Enrollment by Residence</b>							
Georgia	4,898	6,256	6,058	5,474	5,140	4,645	4,531
Out-of-State	222	493	537	504	417	336	343
Non-Resident Tuition Waived		49	50	47	58	64	59

# Enrollment of GPC Decatur Campus I, Fall 1986/94-99

On-Campus Student Enrollment							
	1986	1994	1995	1996	1997	1998	1999
Total Headcount	723	1,664	1,531	1,380	1,274	1,148	1,274
Full-Time		30%	34%	34%	38%	30%	32%
Part-Time		70%	66%	66%	62%	70%	68%
Equivalent Full-Time	407	881	843	797	750	538	547

On-Campus Student Demographics								
Headcount by Gender:	Male	257	585	518	381	376	335	364
	Female	466	1,079	1,013	999	898	813	910
Headcount by Ethnicity:	Asia	5	17	21	18	27	27	20
	Black	483	1,305	1,267	1,216	1,115	1,007	1,085
	Hispanic	7	9	8	8	13	6	17
	Multiracial				7	19	17	25
	Native American	0	3	3	6	0	2	3
	White	228	330	232	125	100	89	124
Others:	Senior Citizens	0	0	0	0	0	2	2
	Non-U.S.	5	71	92	89	83	78	76
	Average Age		26.9	27.0	26.7	27.1	26.5	26.0
	Median Age		24	24	24	24	23	23

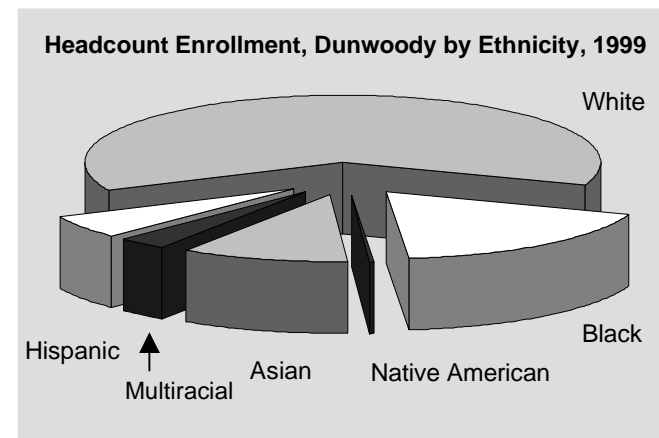
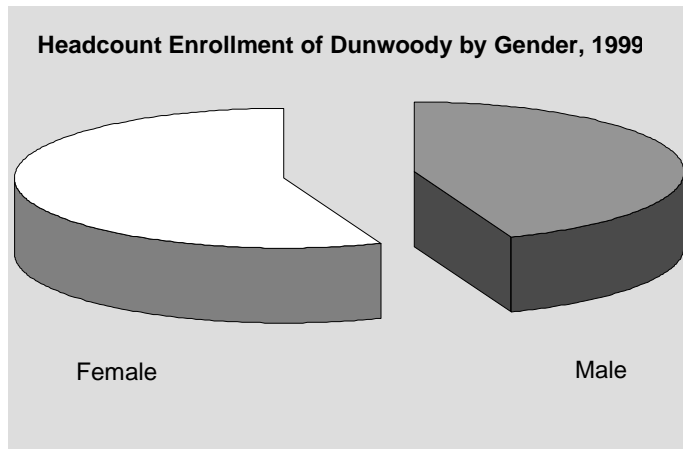


## Enrollment of GPC Decatur Campus II, Fall 1986/94-99

<b>On-Campus Enrollment by Schedule</b>							
	<b>1986</b>	<b>1994</b>	<b>1995</b>	<b>1996</b>	<b>1997</b>	<b>1998</b>	<b>1999</b>
Day		1048	966	913	839	891	955
Evening		567	558	581	514	398	551
Weekend		0	0	0	5	47	108
<b>On-Campus Enrollment by Classification</b>							
Learning Support/Developmental Studies	303	484	472	472	441	382	517
Joint Enrollment	16	8	1	4	11	7	4
Freshman	205	463	446	426	352	342	352
Sophomore	171	629	563	459	448	393	372
Transient	11	32	23	18	15	13	13
Unclassified	17	48	26	0	7	11	16
<b>On-Campus New Student Enrollment by Classification</b>							
Learning Support/Developmental Studies	89	195	197	173	169	179	246
Joint Enrollment	16	8	1	4	8	7	4
Freshman	3	28	11	46	16	14	36
Transfer	41	65	62	57	40	42	58
Transient	7	11	11	5	4	6	8
Unclassified	4	12	7	0	5	2	12
Total	160	319	289	285	242	250	364
<b>On-Campus Students Needing Learning Support</b>							
Math				336	363	316	410
English				197	144	133	188
Reading				175	112	121	175
Unduplicated Head Count				472	441	382	517
<b>On-Campus Student Enrollment by Residence</b>							
Georgia	708	1,607	1,466	1,342	1,233	1,179	1,235
Out-of-State	15	52	57	36	39	25	31
Non-Resident Tuition Waived		5	8	2	2	4	8

# Enrollment of GPC Dunwoody Campus I, Fall 1986/94-99

<b>On-Campus Student Enrollment</b>								
	<b>1986</b>	<b>1994</b>	<b>1995</b>	<b>1996</b>	<b>1997</b>	<b>1998</b>	<b>1999</b>	
Total Headcount	3,308	5,687	5,600	5,038	5,142	4,620	4,797	
Full-Time		35%	35%	39%	43%	37%	43%	
Part-Time		65%	65%	61%	57%	63%	57%	
Equivalent Full-Time	2,114	3,537	3,473	3,282	3,449	2,569	2,600	
<b>On-Campus Student Demographics</b>								
Headcount by Gender:	Male	1,579	2,431	2,366	2,215	2,298	2,076	2,118
	Female	1,729	3,256	3,234	2,823	2,844	2,544	2,679
Headcount by Ethnicity:	Asia	34	239	256	262	325	350	498
	Black	87	672	706	642	787	733	868
	Hispanic	39	139	167	186	204	201	267
	Multiracial				56	93	108	153
	Native American	11	19	25	17	17	14	18
	White	3,137	4,618	4,446	3,875	3,716	3,214	2,993
Others:	Senior Citizens	1	2	4	5	6	6	6
	Non-U.S.	17	321	382	496	665	635	872
	Average Age		24.5	24.7	25.0	25.3	24.5	24.1
	Median Age		22	23	23	23	22	22



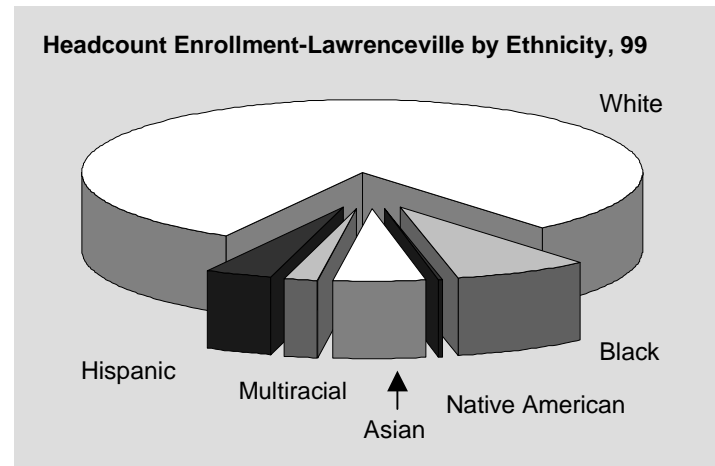
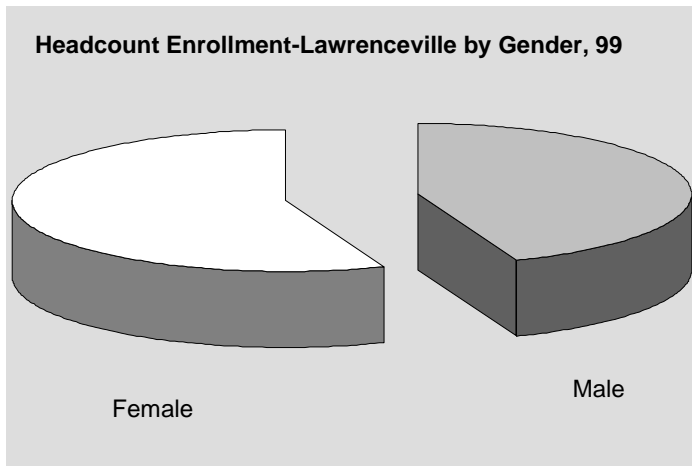
## Enrollment of GPC Dunwoody Campus II, Fall 1986/94-99

<b>On-Campus Enrollment by Schedule</b>							
	<b>1986</b>	<b>1994</b>	<b>1995</b>	<b>1996</b>	<b>1997</b>	<b>1998</b>	<b>1999</b>
Day		3,590	3,405	3,565	3,585	3,387	3,768
Evening		2,505	2,549	2,472	2,417	2,259	2,402
Weekend		229	273	286	314	299	713
<b>On-Campus Enrollment by Classification</b>							
Learning Support/Developmental Studies	860	1,202	1,168	1,238	1,245	1,006	1,033
Joint Enrollment	299	267	342	127	158	161	137
Freshman	1,304	1,804	1,740	1,802	1,745	1,661	1,797
Sophomore	707	2,131	2,076	1,757	1,824	1,640	1,626
Transient	90	114	121	104	110	84	109
Unclassified	48	169	153	0	60	68	95
<b>On-Campus New Student Enrollment by Classification</b>							
Learning Support/Developmental Studies	405	594	564	577	573	468	518
Joint Enrollment	294	259	333	109	153	154	129
Freshman	80	192	170	280	180	201	293
Transfer	210	409	355	292	301	268	310
Transient	55	47	50	51	45	35	49
Unclassified	18	79	64	0	49	32	55
Total	1,062	1,580	1,536	1,309	1,301	1,158	1,354
<b>On-Campus Students Needing Learning Support</b>							
Math				1,051	1,067	883	871
English				319	323	248	308
Reading				222	209	178	231
Unduplicated Head Count				1,238	1,245	1,006	1,033
<b>On-Campus Student Enrollment by Residence</b>							
Georgia	3,179	5,330	5,235	4,706	4,755	4,288	4,361
Out-of-State	109	331	328	304	356	284	381
Non-Resident Tuition Waived		26	37	28	31	48	55

# Enrollment of GPC Lawrenceville Campus I, Fall 1987/94-99

On-Campus Student Enrollment							
	1987	1994	1995	1996	1997	1998	1999
Total Headcount	294	2,580	2,729	2,781	2,956	2,877	3,252
Full-Time		41%	41%	45%	48%	46%	49%
Part-Time		59%	59%	55%	52%	54%	51%
Equivalent Full-Time	156	1,671	1,781	1,885	2,022	1,720	1,828

On-Campus Student Demographics								
Headcount by Gender:	Male	96	1,045	1,105	1,143	1,250	1,240	1,436
	Female	198	1,535	1,624	1,638	1,706	1,637	1,816
Headcount by Ethnicity:	Asian	3	62	73	83	105	124	173
	Black	2	128	153	151	214	179	253
	Hispanic	0	53	74	77	77	71	120
	Multiracial				26	42	51	62
	Native American	2	7	6	4	11	3	11
	White	287	2,330	2,423	2,440	2,507	2,449	2,633
Others:	Senior Citizens	0	1	0	1	1	0	1
	Non-U.S.	0	85	108	133	145	165	243
	Average Age	26.5	24.2	23.8	23.4	24.1	22.8	22.9
	Median Age		21	21	21	23	20	20



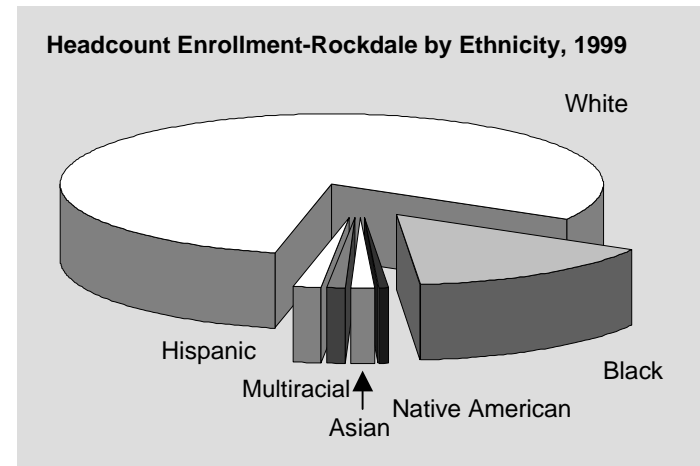
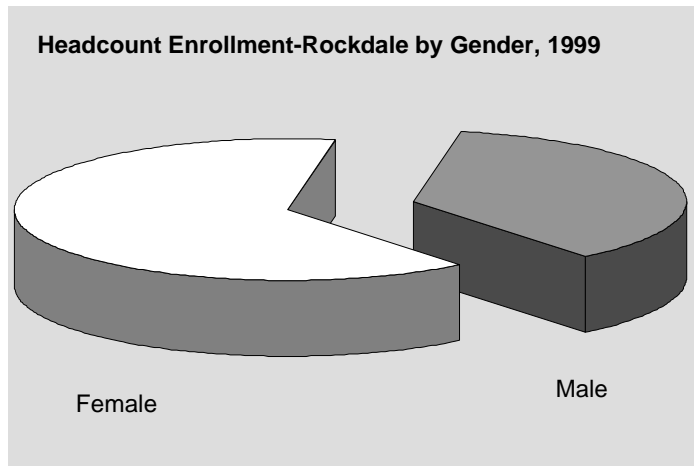
## Enrollment of GPC Lawrenceville Campus II, Fall 1987/94-99

<b>On-Campus Enrollment by Schedule</b>							
	<b>1987</b>	<b>1994</b>	<b>1995</b>	<b>1996</b>	<b>1997</b>	<b>1998</b>	<b>1999</b>
Day		1628	1812	1919	2069	2189	2,643
Evening		1210	1192	1212	1343	1300	1,617
Weekend		0	0	0	84	132	506
<b>On-Campus Enrollment by Classification</b>							
Learning Support/Developmental Studies	117	660	687	687	675	626	711
Joint Enrollment	6	78	106	94	112	124	146
Freshman	136	1,002	1,040	1,151	1,207	1,255	1,401
Sophomore	22	162	811	817	914	818	929
Transient	8	43	49	31	38	34	45
Unclassified	5	35	36	0	10	20	20
<b>On-Campus New Student Enrollment by Classification</b>							
Learning Support/Developmental Studies	91	406	397	386	390	398	435
Joint Enrollment	6	76	104	83	107	118	142
Freshman	29	172	193	287	257	300	296
Transfer	56	129	159	159	162	149	197
Transient	7	17	20	12	13	14	15
Unclassified	4	16	16	0	8	8	9
Total	193	816	889	927	937	987	1,194
<b>On-Campus Students Needing Learning Support</b>							
Math				594	539	521	555
English				203	236	228	259
Reading				142	153	167	207
Unduplicated Head Count				687	675	626	711
<b>On-Campus Student Enrollment by Residence</b>							
Georgia	290	2,503	2,625	2,686	2,857	2,791	3,164
Out-of-State	4	70	90	81	88	74	78
Non-Resident Tuition Waived		7	14	14	11	12	10

# Enrollment of GPC Rockdale Campus I, Fall 1989/94-99

On-Campus Student Enrollment							
	1989	1994	1995	1996	1997	1998	1999
Total Headcount	165	535	692	640	689	689	757
Full-Time		25%	29%	33%	38%	36%	39%
Part-Time		75%	71%	67%	62%	64%	61%
Equivalent Full-Time	71	286	394	369	422	356	354

On-Campus Student Demographics								
Headcount by Gender:	Male	51	165	221	239	249	245	276
	Female	114	370	471	401	440	444	481
Headcount by Ethnicity:	Asian	0	4	6	4	4	11	11
	Black	6	42	73	64	58	76	116
	Hispanic	0	4	10	11	6	6	13
	Multiracial				2	10	5	9
	Native American	0	0	2	1	1	3	3
	White	159	485	601	558	610	588	605
Others:	Senior Citizens	1	0	1	0	1	0	1
	Non-U.S.	0	4	10	14	12	17	30
	Average Age	28.8	25.0	25.3	25.8	25.3	24.9	24.7
	Median Age		21	21	22	23	22	21



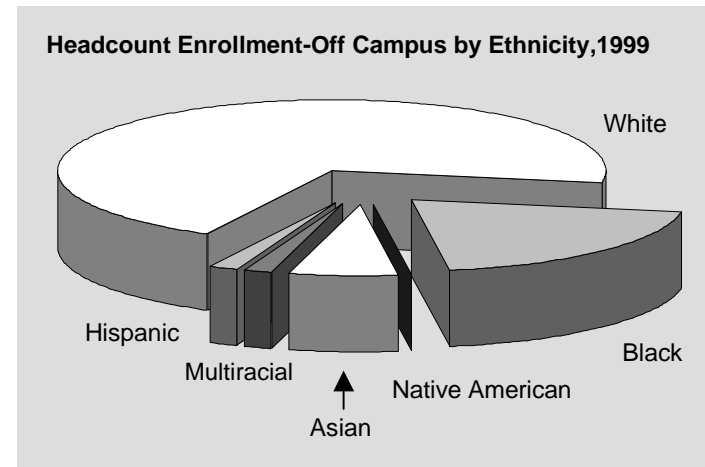
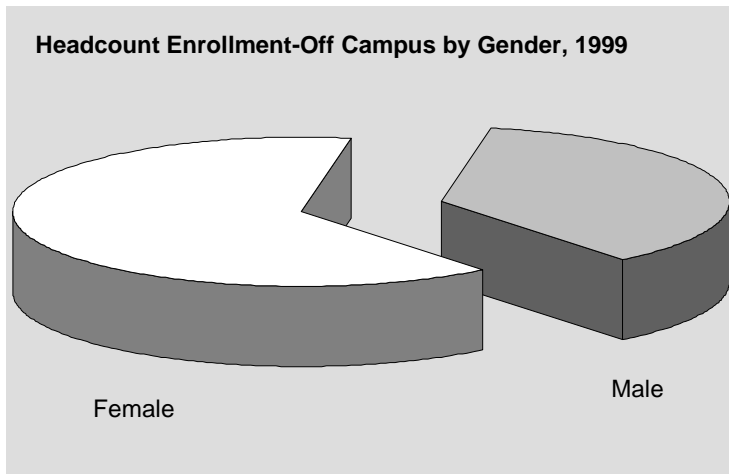
## Enrollment of GPC Rockdale Campus II, Fall 1989/94-99

<b>On-Campus Enrollment by Schedule</b>							
	<b>1989</b>	<b>1994</b>	<b>1995</b>	<b>1996</b>	<b>1997</b>	<b>1998</b>	<b>1999</b>
Day	0	206	348	368	427	422	517
Evening	165	297	330	367	357	420	439
Weekend	0	0	0	0	0	0	16
<b>On-Campus Enrollment by Classification</b>							
Learning Support/Developmental Studies	38	133	204	205	207	176	193
Joint Enrollment	0	79	83	15	22	15	13
Freshman	89	201	245	255	264	267	314
Sophomore	26	109	142	156	188	223	231
Transient	2	7	11	9	7	5	4
Unclassified	10	6	7	0	1	3	2
<b>On-Campus New Student Enrollment by Classification</b>							
Learning Support/Developmental Studies	22	78	115	110	112	100	105
Joint Enrollment	0	78	80	15	21	15	13
Freshman	8	22	22	37	43	42	47
Transfer	12	20	34	30	35	33	31
Transient	1	3	3	5	2	1	3
Unclassified	3	3	1	0	1	2	1
Total	46	204	255	197	214	193	200
<b>On-Campus Students Needing Learning Support</b>							
Math				185	172	151	163
English				45	49	30	47
Reading				31	36	37	36
Unduplicated Head Count				205	207	176	193
<b>On-Campus Student Enrollment by Residence</b>							
Georgia	164	531	685	635	683	684	743
Out-of-State	1	4	6	3	4	3	14
Non-Resident Tuition Waived		0	1	2	2	2	0

# Enrollment of GPC Off Campus/Distance Education I, Fall 1996-99

Off Campus/Distance Education Student Enrollment				
	1996	1997	1998	1999
Total Headcount	713	915	1,031	1,517
Full-Time	24%	23%	19%	41%
Part-Time	76%	77%	81%	59%
Equivalent Full-Time	281	357	255	337

Off Campus/Distance Education Student Demographics					
Headcount by Gender:	Male	225	269	326	554
	Female	488	646	705	963
Headcount by Ethnicity:	Asian	22	36	53	96
	Black	150	207	206	302
	Hispanic	8	16	14	23
	Multiracial	15	13	13	27
	Native American	1	3	0	2
	White	517	640	727	1,067
Others:	Senior Citizens	0	0	0	1
	Non-U.S.	22	41	53	122
	Average Age	24.6	24	22.6	23.3
	Median Age	21	22	18	20



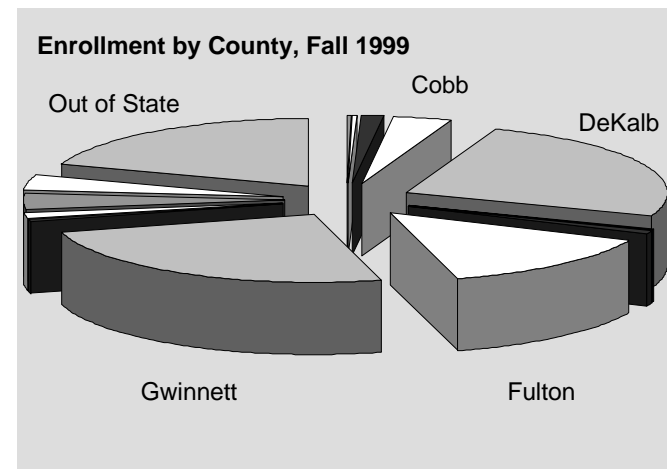
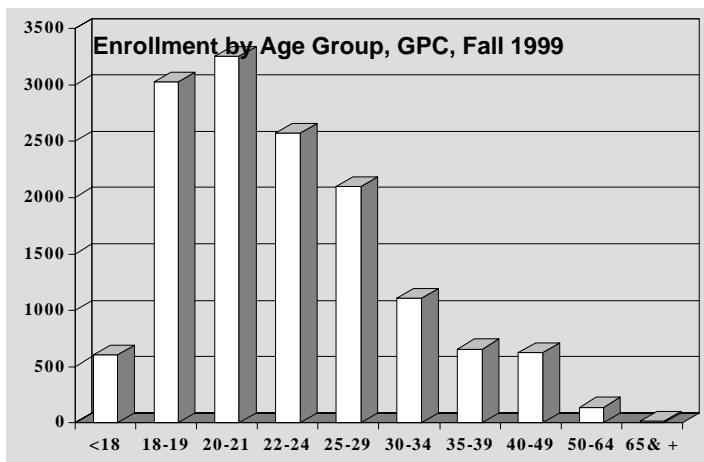
## Enrollment of GPC Off Campus/Distance Education II, Fall 1996-99

<b>Off Campus/Distance Education Enrollment by Schedule</b>				
	<b>1996</b>	<b>1997</b>	<b>1998</b>	<b>1999</b>
Day	36	0	0	
Evening	0	0	25	
Weekend	0	0	0	
<b>Off Campus/Distance Education Enrollment by Classification</b>				
Learning Support/Developmental Studies	33	42	59	106
Joint Enrollment	303	467	543	585
Freshman	153	131	158	309
Sophomore	205	251	253	462
Transient	19	16	12	37
Unclassified	0	3	6	18
<b>Off Campus/Distance Education New Student Enrollment by Classification</b>				
Learning Support/Developmental Studies	7	7	16	39
Joint Enrollment	292	467	542	581
Freshman	14	6	9	25
Transfer	25	24	21	41
Transient	10	8	6	19
Unclassified	0	2	2	9
Total	348	514	596	714
<b>Off Campus/Distance Education Students Needing Learning Support</b>				
Math	31	40	57	97
English	4	2	6	8
Reading	2	1	0	9
Unduplicated Head Count	33	42	59	106
<b>Off Campus/Distance Education Student Enrollment by Residence</b>				
Georgia	694	893	1,007	1,461
Out-of-State	17	20	20	52
Non-Resident Tuition Waived	2	2	4	4

# Enrollment by Age Group, Fall 1985-99; and by County, Fall 1999

Enrollment by Age Group, Fall 1995 to 1999					
	1995	1996	1997	1998	1999
Under 18	666	373	885	585	604
18-19	2,828	2,526	1,112	2,763	3,024
20-21	3,105	3,350	3,655	3,057	3,249
22-24	3,009	3,149	3,323	2,645	2,569
25-29	2,797	2,740	3,083	3,302	2,098
30-34	1,660	1,580	1,547	1,223	1,107
35-39	1,004	948	853	673	657
40-49	856	835	822	685	625
50-64	139	149	172	140	141
65 & +	9	15	16	12	17
<b>Total</b>	<b>16,073</b>	<b>15,665</b>	<b>15,468</b>	<b>14,085</b>	<b>14,091</b>

Enrollment by County, Fall 1999		
County	Enrollment	Percent
Cherokee	54	.4
Clarke	29	.2
Clayton	173	1.2
Cobb	546	3.9
DeKalb	3,493	24.8
Douglas	36	.3
Fayette	29	.2
Forsyth	92	.7
Fulton	2,014	14.3
Gwinnett	3,516	25.0
Henry	84	.6
Newton	206	1.5
Rockdale	534	3.8
Others in State	497	3.5
Out of State	2,788	19.8
<b>Total</b>	<b>14,091</b>	<b>100</b>



## High Schools Attended by 100 or More Students, Fall 1998-99

High School	Total Fall Enrollment		New Student Enrollment		Enrollment of New HS Grads			
	1998	1999	1998	1999	1998	1999		
<b>DeKalb</b>	Clarkston	112	110	25	21	14	12	
	Columbia		100		24		13	
	Cross Keys	130	115	30	33	12	23	
	Dunwoody	199	204	83	94	14	31	
	Lakeside	112	118	42	49	16	20	
	Lithonia	105	106	20	28	12	12	
	Open Campus	181	192	30	53	12	23	
	Redan	211	214	51	65	19	34	
	Salem High School	132	124	68	56	13	13	
	Southwest DeKalb	146	141	35	37	18	13	
	Stone Mountain	148	121	32	30	9	13	
	Tucker	133	146	53	53	24	29	
	<b>Fulton</b>	Chattahoochee/Crestwood	278	299	157	166	31	21
		Independence Alternative		126		32		10
Milton		194	180	98	95	15	19	
North Springs		101	107	55	49	8	9	
Roswell		212	177	135	114	7	9	
<b>Gwinnett</b>		Berkmar	201	260	59	79	46	58
	Brookwood	340	346	130	139	46	70	
	Central Gwinnett	210	217	72	65	43	42	
	Collins Hill	182	263	73	107	50	59	
	Dacula		106		43		28	
	Duluth	214	240	77	108	36	33	
	Meadowcreek	207	225	58	57	38	43	
	Norcross	208	189	66	52	37	30	
	Parkview	236	254	80	99	49	52	
	Phoenix (Open Campus)	129	174	34	55	16	30	
	Shiloh	210	237	68	84	51	40	
	South Gwinnett	299	328	116	127	65	57	
	<b>Rockdale</b>	Heritage	178	182	82	82	17	14
		Rockdale	137	140	54	54	21	19
<b>Walton</b>	Loganville	109	135	42	56	34	39	

# International Student Enrollment I, Fall 1995-99

Country	95	96	97	98	99	Country	95	96	97	98	99	Country	95	96	97	98	99
Afghanistan	26	16	12	13	11	Canada	40	44	57	48	59	Germany			13	13	22
Albania				1	2	Cayman Isl			2	1	1	Ghana	9	12	19	13	14
Algeria	1		1	4	6	Central Africa	2	1	1	1	1	Greece	1		1	2	1
Angola			1		1	Chile	4	5	7	4	3	Grenada			1		
Antarctica				1	1	China	34	34	35	36	33	Guatemala	2	1	1	2	5
Antigua/ Barbuda	1	1	2	2	1	Columbia	30	36	32	34	48	Guinea			2	4	4
Argentina	3	6	4	1	3	Congo				1	1	Guyana	35	34	27	24	22
Armenia	1					Coral Sea Isl				1	1	Haiti	20	25	14	18	17
Australia	4	4	3	1	1	Costa Rica	2	4	1	1	4	Honduras	2	4	3	5	3
Austria				2	1	Cote D'Ivoire	9	8	9	7	8	Hong Kong	9	15	16	18	15
Azerbaijan	1	1	2	2	1	Croatia			1	1		Hungary	1		1		
Bahamas	9	19	14	13	11	Cuba	3	3	6	5	6	India	73	79	78	97	117
Bangladesh	17	20	25	28	32	Czech Rep.				1	1	Indonesia	24	28	27	20	35
Barbados	5	4	3			Czechslovakia			1	3	1	Iran	37	36	38	28	37
Belarus			2		3	Denmark	8					Iraq				2	4
Belgium	1	2	5	5	7	Djibouti	2	2	2		1	Ireland	5	6	5	5	7
Belize	1	2	2	1	1	Dominica	1	3	3	2	1	Israel	10	10	6	5	9
Bermuda	6	4	3	6	4	Dominican R	4	3	2	3	9	Italy	5	3	9	5	4
Bolivia	2	2	1	3	2	Ecuador	3	4	4		2	Jamaica	121	121	125	116	104
Bosnia/Herzeg	2	9	14	23	24	Egypt	3	2	4	2	1	Japan	50	53	49	31	32
Botswana	1	1	1			El Salvador	5	6	7	8	7	Jordan	9	7	6	3	2
Brazil		19	25	30	29	Eritrea			14	19	18	Kenya	11	11	18	15	16
Bulgaria	1	2		2	6	Ethiopia	73	89	104	98	101	Korea, DPR	5	3	1	1	
Burundi			1			Fiji			1		1	Korea, R	118	139	106	114	157
Byelarus	2	2				Finland	1	1	3	3	3	Kuwait	3	3	3	1	
Cambodia	15	16	13	10	13	France	15	11	18	16	22	Laos	22	17	12	14	14
Cameroon	8	6	9	10	13	Gabon				1		Latvia	1	2	3	3	3
						Gambia	1	3	3	3	5	Lebanon	4	6	6	7	8

## International Student Enrollment II, Fall 1995-99

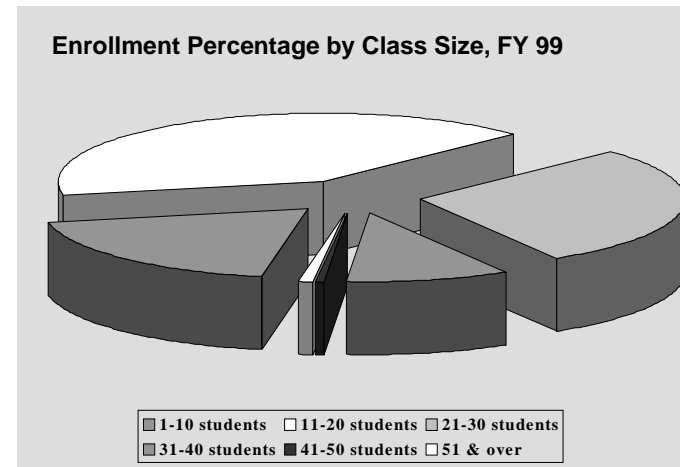
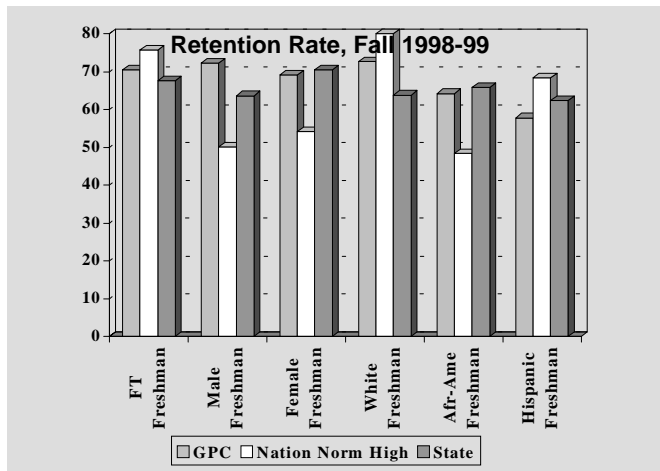
Country	95	96	97	98	99	Country	95	96	97	98	99	Country	95	96	97	98	99
Liberia	21	22	23	21	27	Peru	11	13	12	13	12	Tanzania		1	3	5	7
Libya	1	1		1		Philippines	8	7	7	9	9	Thailand	18	11	9	12	10
Lithuania			1	4	2	Poland	5	9	11	12	12	Togo				1	3
Macau	1	1		1	1	Portugal	3	3	2	3	1	Trinida/Tobag	11	20	23	29	30
Madagascar			1	1		Romania	16	16	24	26	29	Tunisia	3	2	2	2	2
Malawi			2	2		Russia	10	17	20	25	32	Turkey	11	9	4	3	6
Malaysia	12	5	13	11	7	Russia-Georgia	9	1	1			Uganda	2	2	1		3
Mali			2	3	3	Saudi Arabia	1	1	3	2	4	Ukraine	4	10	5	5	8
Mexico	20	20	19	22	29	Senegal	1	1	5	7	13	United Arab	1		1		
Moldova		2	2	2	2	Sierra Leone	10	12	11	12	12	Emer.					
Morocco	5	5	5	5	8	Singapore	4	2	3	2		United	43	45	43	32	35
Mozambique	2	2	2			Somalia	14	12	15	14	21	Kingdom					
Namibia	1			1		South Africa	10	8	8	8	12	Uruguay	5	4	3	1	
Nepal	2		1	1	2	Spain	8	7	9	12	11	US Related	211	176	98	68	1206
Netherlands	5	4	5	7	4	St. Kitts &		1		1	2						0
Netherlands	1	2				Nevis						Uzbekistan		2	1	2	1
Ant.						St. Lucia	1	4	2	2	1	Venezuela	19	15	21	20	21
Nicaragua	7	6	6	7	6	St. Vincent	2	2	5	4	1	Vietnam	181	216	228	219	217
Nigeria	83	89	96	99	116	Sudan	1	1	5	5	6	West	18	16			
Norway	1	2	1	1	2	Suriname		1	1		1	Germany					
Pakistan	42	40	36	29	40	Sweden	9	9	10	11	13	Yemen	1				
Panama	4	4	4	7	8	Switzerland	1	1	1	1		Yugoslavia	1	1	2	2	4
Paracal Isl.		1				Syria	1	3	4	3	1	Zaire	5	9	10	7	10
Paraguay			1			Taiwan	32	39	35	49	46	Zambia	3	3	2		2
						Tajikistan			1	1	1	Zimbabwe	3	3	2	1	1
												<b>Total</b>	<b>1828</b>	<b>1943</b>	<b>1924</b>	<b>1881</b>	<b>2020</b>

# Retention Rate, Fall 1998-99; Enrollment by Class Size, FY 1987-99

Retention Rate, Fall 1998-99						
Institution	Full-Time Freshmen	Male Freshmen	Female Freshmen	White Freshmen	African-Am. Freshmen	Hispanic Freshmen
GPC	70.5%	72.2%	69.1%	72.7%	64.2%	57.8%
National Norm	53.5-75.8%	38.3-50.1%	45.8-54.2%	45.9-80.0%	19.8-48.4%	0.0-68.4%
Georgia Average	67.6%	63.6%	70.5%	63.8%	65.9%	62.4%

Source: Board of Regents, Draft Benchmarking Materials. July 2000

Enrollment Percentage by Class Size, FY 1987-99							
Class Size	FY 87	FY 94	FY 95	FY 96	FY 97	FY 98	FY 99
1-10 students	21.4%	13.7%	13.4%	12.0%	12.0%	17.7%	19.2%
11-20 students	35.9%	36.0%	38.4%	39.6%	42.3%	41.9%	40.8%
21-30 students	32.2%	38.1%	36.9%	37.3%	35.5%	29.4%	28.5%
31-40 students	9.0%	10.0%	9.6%	9.1%	8.6%	9.9%	10.2%
41-50 students	1.2%	1.5%	1.4%	1.3%	1.2%	0.5%	0.6%
Over 50 students	0.4%	0.7%	0.7%	0.7%	0.4%	0.6%	0.7%



## Student Financial Aid Awarded by Source, Fiscal Year 1995-99

Awards	FY 1995		FY 1996		FY 1997		FY 1998		FY 1999	
	Student #	\$ Amount	Student #	\$ Amount	Student #	\$ Amount	Student #	\$ Amount	Student #	\$ Amount
<b>GRANTS</b>										
Pell	3,507	3,891,755	3,600	4,350,679	3,994	5,159,254	4,343	6,473,145	4,293	6,423,000
SEOG	760	295,359	324	140,000	674	224,069	545	218,602	651	266,700
Vocational Rehabilitation (Student Accounts)	40	21,445	50	25,000	52	26,000				
Georgia Incentive	186	81,960	165	72,745	120	33,315	73	16,100		
HOPE	1,276	879,314	1,581	1,196,666	2,020	1,508,034	2,612	2,240,057	3,097	2,767,844
<b>LOANS</b>										
GSL	2,617	6,629,903	4,500	8,000,000	4,800	8,125,610	4,860	8,932,197	1,626	3,567,099
PLUS	8	11,908	10	40,125	24	90,544	15	80,514	1	1,274
Institutional	107	13,587	125	20,000	120	18,000	122	18,000		
Supplemental										
Regents		16,000	45	17,200	36	17,200	30	17,200	30	15,000
State Direct	40	70,000								
Other	50									
Unsubsidized			2,465	3,500,000	2,909	2,933,098		4,044,366	1,200	3,150,791
<b>SCHOLARSHIPS</b>										
Institutional	446	256,418	460	260,000	581	301,936	908	298,821	357	167,504
Other	1,017	362,583	1,075	400,000	2,000	425,000			122	95,666
<b>STUDENT EMPLOYMENT</b>										
College Work Study	138	233,198	160	270,007	210	283,631	232	461,687	140	309,923
Student Assistants (Payroll)	300	292,083	325	295,075	330	298,000				
<b>TOTAL AWARDED</b>	<b>10,492</b>	<b>13,055,513</b>	<b>14,885</b>	<b>18,587,497</b>	<b>17,870</b>	<b>19,443,691</b>	<b>13,740</b>	<b>22,800,689</b>	<b>11,517</b>	<b>16,764,801</b>

## Entering Freshman Average SAT & High School GPA, FY 1993-97

	FY93	FY94	FY95	FY96	FY97	USG FY97
Attending 5 or More College-Level Hours						
<b>SAT Verbal</b>						
Male Average	370	359	362	460	459	501
Female Average	348	352	346	443	439	485
Average SAT Verbal	358	355	353	451	448	492
<b>SAT Math</b>						
Male Average	410	407	414	458	463	508
Female Average	372	376	375	422	420	466
Average SAT Math	390	390	393	438	440	485
<b>Composite SAT</b>	748	746	746	889	888	977
<b>High School GPA</b>						
Male Average	2.03	1.96	2.19	2.29	2.37	2.73
Female Average	2.26	2.14	2.41	2.48	2.5	2.91
<b>Average GPA</b>	<b>2.15</b>	<b>2.05</b>	<b>2.31</b>	<b>2.39</b>	<b>2.44</b>	<b>2.83</b>
Attending 25 or More College-Level Hours						
<b>SAT Verbal</b>						
Male Average	374	361	354	491	457	515
Female Average	351	343	345	474	440	498
Average SAT Verbal	361	351	349	482	448	505
<b>SAT Math</b>						
Male Average	424	419	419	501	466	526
Female Average	380	378	381	455	426	481
Average SAT Math	400	396	398	477	445	501
<b>Composite SAT</b>	761	747	747	959	893	1006
<b>High School GPA</b>						
Male Average	2.10	2.03	2.29	2.48	2.4	2.86
Female Average	2.34	2.17	2.47	2.71	2.55	3.02
<b>Average GPA</b>	<b>2.23</b>	<b>2.11</b>	<b>2.39</b>	<b>2.6</b>	<b>2.48</b>	<b>2.95</b>

## Applications Received, Fall 1995-99; Testing Activities, FY 1995-99

Applications Received, Fall 1995-99										
Applications Received	1995		1996		1997		1998		1999	
	#	%	#	%	#	%	#	%	#	%
Total App. Received	13,041	100	12,802	100	13,180	100	12,963	100	12,123	100
Completed Files	8,737	67	8,193	64	8,642	66	8,228	63	7,693	64
Completed – Registered	6,317	48	5,691	44	4,850	37	4,231	33	5,000	41
Completed – Unregistered	2,420	19	2,502	20	3,792	29	3,997	30	2,693	23
Incomplete Files	4,304	33	4,609	36	4,538	34	4,735	37	4,430	36

Testing Activities, FY 1995-99					
Tests Administered	1995	1996	1997	1998	1999
ACT	330	163	199	209	187
Alternate Regents'	320	329	289	360	390
BSE/CPE-Exit	4,518	4,686	4,266	3,974	2,634
BSE/CPE-Placement	7,015	6,602	6,574	5,904	4,855
CLEP	132	154	148	237	124
Dental Hygiene Board	75	25	33	39	24
English as a Second Language Placement (ENSL)	769	797	780	821	968
Independent Study	56	27	30	39	25
Institutional SAT	1,646	1,566	1,459	1,199	1,216
Regents' Test	4,433	4,550	4,581	4,699	3,282
SAT / Achievement Tests	1,577	1,541	1,495	1,562	1,491
Test of English as a Foreign Language (TOEFL)	349	200	320	439	722
*Other	356	456	817	1,666	2,964
<b>Total</b>	<b>21,576</b>	<b>21,096</b>	<b>20,991</b>	<b>21,148</b>	<b>18,882</b>

## Transfer Activities, FY 1996-97

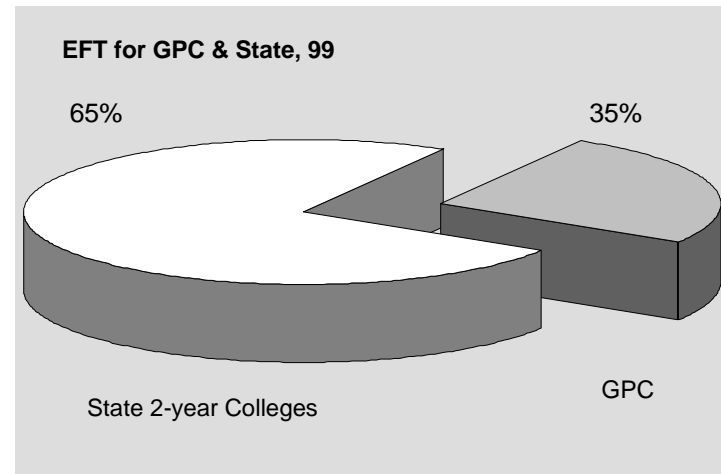
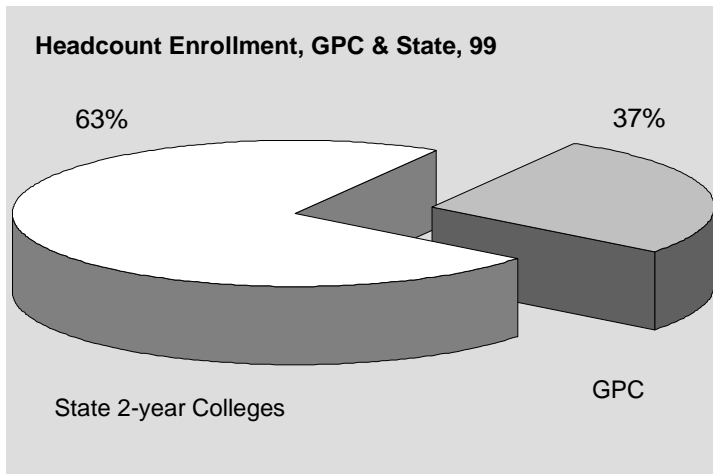
	Transfer to GPC		Transfer from GPC			Transfer to GPC		Transfer from GPC		
	FY96	FY97	FY96	FY97		FY96	FY97	FY96	FY97	
Georgia Institute of Technology	72	16	57	64						
Georgia State University	171	32	789	790						
Medical College of Georgia	1		27	26						
University of Georgia	110	24	333	222						
<b>University Group</b>	<b>354</b>	<b>72</b>	<b>1,206</b>	<b>1,102</b>						
Georgia Southern University	167	28	29	22						
Valdosta State University	37	10	24	17						
<b>Regional University Group</b>	<b>204</b>	<b>38</b>	<b>53</b>	<b>39</b>						
Albany State University	5	1		3						
Armstrong Atlantic State University	6	15	5	7						
Augusta State University	13	6	6	16						
Clayton College and State University	36	13	75	79						
Columbus State University	7	2		13						
Fort Valley State University	5	3	5							
Georgia College and State University	45	8	31	35						
Georgia Southwestern State University	6		2	4						
Kennesaw State University	41	8	194	174						
North Georgia College and State University	19	6	44	64						
Savannah State University	16	2	1	3						
Southern Polytechnic State University	23	3	56	74						
State University of West Georgia	65	20	39	53						
<b>State University Group</b>	<b>287</b>	<b>87</b>	<b>458</b>	<b>525</b>						
Dalton College		1	1	2						
Macon College		8	3	2						
<b>State College Group</b>	<b>9</b>	<b>4</b>	<b>4</b>	<b>4</b>						
Abraham Baldwin Agricultural College		10		4						
Atlanta Metropolitan College		25	6	7						
Bainbridge College										
Coastal Georgia Community College		2		7						
Darton College		6	2	1						
East Georgia College		1		3						
Floyd College		2		2						
Gainesville College		33	6	27						
Gordon College		17	2	17						
Middle Georgia College		8		3						
South Georgia College		1								
Waycross College										
<b>Associate Degree Group</b>	<b>105</b>	<b>16</b>	<b>77</b>	<b>71</b>						
<b>Total University System</b>	<b>950</b>	<b>217</b>	<b>1,794</b>	<b>1,741</b>						
Other In-State	319	63								
Other Out-of-State	1,177	2,897								
Non-System Group	1,496	2,960								
<b>Total</b>	<b>2,446</b>	<b>3,177</b>	<b>1,794</b>	<b>1,741</b>						
Average GPA Sending	*2.23	*1.89	**2.75	**2.78						
Average GPA Receiving	**2.67	**2.55	*2.84	*2.85						

\* At University System senior colleges and universities

\*\* At Georgia Perimeter College

# Comparison with Other USG Two-Year Colleges, Fall 1999

Institution	Headcount Enrollment	EFT	Non-White	Female	Georgia Residents	Freshman	New Freshman
Abraham Baldwin Agric. College	2,609	1,898	18%	50%	94%	62%	31%
Atlanta Metro. College	1,887	1,211	99%	62%	93%	72%	17%
Bainbridge College	1,279	719	23%	65%	99%	61%	23%
Coastal Georgia Comm. College	1,999	1,092	28%	67%	93%	58%	10%
Darton College	2,674	1,698	37%	66%	95%	64%	22%
East Georgia College	1,310	826	35%	57%	98%	65%	31%
Floyd College	2,039	1,356	11%	63%	98%	67%	25%
Gainesville College	3,036	1,987	9%	60%	98%	63%	24%
<b>Georgia Perimeter College</b>	<b>14,091</b>	<b>8,295</b>	<b>46%</b>	<b>60%</b>	<b>94%</b>	<b>59%</b>	<b>15%</b>
Gordon College	2,758	2,085	25%	62%	98%	69%	35%
Middle Georgia College	2,064	1,502	31%	53%	95%	69%	34%
South Georgia College	1,226	831	23%	62%	96%	57%	29%
Waycross College	851	524	22%	70%	99%	56%	21%
<b>Two-Year Colleges Total</b>	<b>37,823</b>	<b>24,024</b>	<b>36%</b>	<b>61%</b>	<b>95%</b>	<b>62%</b>	<b>22%</b>



# Athletics, FY 1999

---

**Colors:** Gold, Cardinal, Blue

**Affiliation:** NJCAA

**Mascot:** Jaguar

**Conference:** GJCAA

## RECENT ACCOMPLISHMENTS

### Baseball

**Head Coach:** David Stephenson

**Assistant Coach:**

- 14 players drafted in the 90s; also in 90s 13 All-Tournament players, 28 All-Region selections, 6 All-Americans and 1 Academic All-American

### Softball

**Head Coach:** Bonnie Young

**Assistant Coach:** Ed Schutte

- Finished 4<sup>th</sup> in the conference in 2000. Heather Nations led NJCAA in Earned Run Average.

### Basketball (Men's)

**Head Coach:** Alfred Barney

**Assistant Coach:** Greg Smarr

- GJCAA and Region XVII Champions in 2000
- Top Ten in National Poll in 1999

### Basketball (Women's)

**Head Coach:** James Waldon

**Assistant Coach:** Christina Shafer

- Finished 2<sup>nd</sup> in GJCAA in the program's 3<sup>rd</sup> year

### Soccer (Men's)

**Head Coach:** Marc Zagara

**Assistant Coach:** Ron Moore

- Advanced to National Tournament in 1999
- Past eight seasons 117-41-23 record. The team has five state championships, two southeastern championships and two national tournament appearances in the recent past.
- Zagara's teams have been nationally ranked every year.

### Soccer (Women's)

**Head Coach:** Steve Keiss

**Assistant Coach:** Franklin Lawson

### Tennis (Men's)

**Head Coach:** Chris Decker

**Assistant Coach:**

- 1998, 1999 and 2000 National Champions
- Eight first-team and two second-team All-Americans in 2000
- Pre-season number one in 1999 and 2000

### Tennis (Women's)

**Head Coach:** Joyce Garrett

**Assistant Coach:**

- Won 2000 National Championship
- Regional Champions in 1999 and 2000
- Finished 7<sup>th</sup> at 1999 National Tournament

**Sports Information Director:** Daryl Brooks



# **Funding and Facilities**

---



# Student Tuition and Fees, FY 1999-2000

<b>Tuition (per hour)</b>	
In-State	\$53.00
Out-of-State (In addition to in-State)	\$213.00
<b>Required Fees</b>	
Application (one time only)	\$20.00
Matriculation (In-State Tuition)	\$53.00
Parking	\$8.00
Student Activity	\$42.00
Student Athletic	\$15.00
Technology	\$38.00
<b>Special Fees</b>	
Applied Music	\$75.00
Dental Hygiene Insurance	\$8.00
Late Payment	\$38.00
Nursing Insurance/Test	\$15.00
Tele Course	\$50.00
International Student Health Insurance (F1 Visa only)	\$265.00

## Tuition and Fees

Georgia Perimeter College students are responsible for tuition and fees which are set each year. Fees include student activity, athletic, parking, technology and other special fees. Tuition and fees are due each semester at the time of registration. Registration is not complete until all fees are paid. Payment may be in cash, by check payable in U.S. currency or with a Visa or Mastercard. The College

will withhold copies of transcripts and other student records and/or revoke the enrollment of students who owe the College money.

Fees and expenses are subject to change without notice.

Most fees are assessed for on-campus students only. Instruction delivered at Clarkston, Lawrenceville, Dunwoody and Decatur is considered on-campus. Instruction at the Rockdale Center and other locations or by distance education is considered off-campus.

The precise amount of a student's fees for a semester depends upon a number of factors:

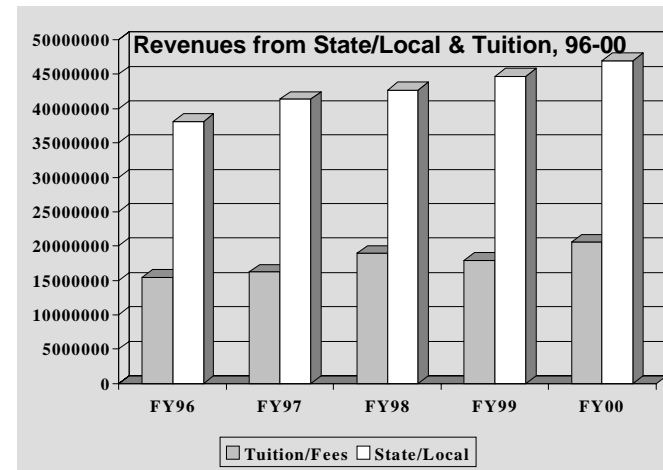
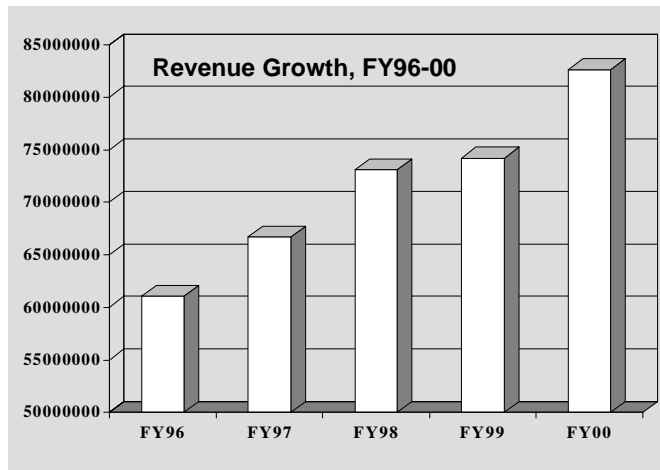
- The number of courses taken
- The nature of the courses
- The location at which the courses are taught
- The number of credit hours assigned to the courses
- The residence status of the student

It is the responsibility of the student to be informed of and observe all regulations and procedures regarding the payment of fees and the entitlement of refunds.

# Revenues and Expenditures Per Student, FY 1996-2000

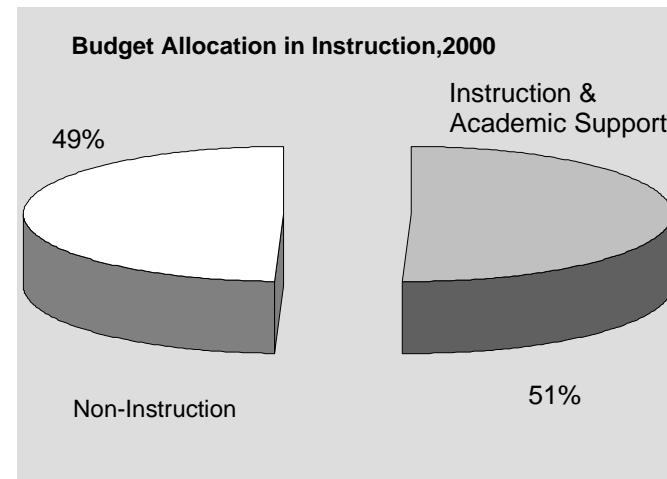
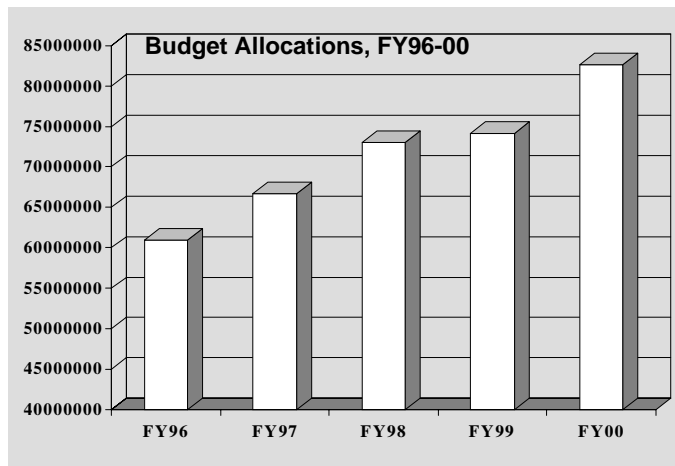
Revenues	FY96	FY97	FY98	FY99	FY00 Budget
Tuition and Fees	\$15,474,533	\$16,215,228	\$18,921,251	\$17,908,958	\$20,567,212
State/Local Appropriations	38,085,437	41,336,952	42,705,702	44,671,732	46,915,360
Other Income	248,453	176,310	295,041	348,563	273,000
Departmental Sales & Services	1,248,386	1,526,604	1,201,694	1,259,420	2,479,718
Sponsored Operations	6,008,697	7,426,421	9,963,665	10,015,886	12,400,000
<b>Total Revenues</b>	<b>\$61,065,506</b>	<b>\$66,681,515</b>	<b>\$73,087,353</b>	<b>\$74,204,559</b>	<b>\$82,635,290</b>

Expenditures Per Student	FY96	FY97	FY98	FY99	FY00 Budget
EFT Students	8,798	8,611	8,863	8,219	8,253
Expenditure per EFT Student (excluding sponsored)	\$6,219	\$6,882	\$7,113	\$7,753	\$8,467



# Budget Allocations, FY 1996-2000

Allocations	FY96	FY97	FY98	FY99	FY00 Budget
Instruction	\$27,894,245	\$29,189,677	\$31,206,249	\$30,613,754	\$34,898,824
Public Services				202,819	
Academic Support	5,559,366	6,014,801	6,655,918	6,721,191	6,906,174
Student Services	5,949,301	6,442,825	6,669,103	6,710,204	7,366,372
Institutional Support	9,362,900	11,453,672	11,479,365	12,826,233	13,336,303
Plant Operations	5,950,045	6,156,456	7,027,642	7,172,913	7,727,617
Sponsored Operations	6,233,824	7,426,421	9,963,665	9,889,774	12,400,000
<b>Total Allocations</b>	<b>\$60,949,681</b>	<b>\$66,683,852</b>	<b>\$73,001,942</b>	<b>\$74,136,888</b>	<b>\$82,635,290</b>



## Library Collections, FY 1995-99

<b>Library Collections</b>	<b>FY95</b>	<b>FY96</b>	<b>FY97</b>	<b>FY98</b>	<b>FY99</b>
<b>Holdings</b>					
Paper Volumes	217,724	225,776	232,671	209,953	206,923
Paper Titles	147,590	152,160	151,775	156,165	158,993
Serial Subscriptions	1,180	1,339	1,073	1073**	1,070
Number of Microforms	30,737	31,660	32,397	33,780	35,000
Electronic Titles				351	500
<b>Expenditures</b>					
Materials: Paper & Microforms	202,872	253,337	121,517	269,282	400,543
Current Serial: Paper & Microforms	131,998	133,950	129,228	132,833	91,631
Audio-Visual Materials	34,311	32,031	31,985	31,944	26,533
<b>Circulation</b>					
General Collection	136,288	129,315	110,614	97,318	63,930
Reserve Collection				16,793	8,888
<b>Interlibrary Loans</b>					
To Other Libraries	1,195	1,327	1,375	1,374	522
From Other Libraries	206	326	254	275	183

## Classrooms in Use by Campus, Day and Hour, Fall 1999

Day & Hour	Clarkston (43 general rooms)		Dunwoody (52 general rooms)		Decatur (17 general rooms)		Lawrenceville (30 general rooms)		Rockdale (9 general rooms)	
	#	%	#	%	#	%	#	%	#	%
MWF										
8:00-9:10AM	29	64%	29	55%	12	71%	21	95%	8	73%
9:25-10:35AM	35	78%	38	72%	11	65%	22	100%	7	64%
10:40-11:50AM	31	69%	35	66%	9	53%	21	95%	7	64%
MW										
8:00-9:40AM	35	78%	44	83%	14	82%	22	100%	8	73%
10:00-11:40AM	43	96%	49	92%	13	76%	22	100%	7	64%
13:40-15:25PM	26	58%	29	55%	6	35%	20	91%	2	18%
15:30-17:10PM	12	27%	20	38%	2	12%	11	50%	1	9%
17:20-19:00PM	27	60%	38	72%	11	65%	19	86%	8	73%
19:10-20:50PM	27	60%	37	70%	7	41%	19	86%	8	73%
20:55-22:40PM	9	20%	13	25%	2	12%	10	45%	2	18%
TR										
8:00-9:40AM	39	87%	42	79%	14	82%	21	95%	10	91%
10:00-11:40AM	42	93%	51	96%	15	88%	21	95%	9	82%
11:55-13:35PM	37	82%	44	83%	11	65%	21	95%	8	73%
13:40-15:25PM	29	64%	28	53%	2	12%	19	86%	3	27%
15:30-17:10PM	12	27%	15	28%	0	0%	12	55%	0	0%
17:20-19:00PM	33	73%	40	75%	12	71%	19	86%	8	73%
19:10-20:50PM	31	69%	38	72%	9	53%	20	91%	10	91%
20:55-22:40PM	12	27%	13	25%	2	12%	10	45%	4	36%

## Average Weekly Percentage of General Classrooms in Use by Hour, 94-98

Time of Day	Fall 1994	Fall 1995	Fall 1996	Fall 1998	System 2-year Fall 1998	System Total Fall 1998
7:00AM	-	-	-	8%	3%	3%
8:00AM	9%	55%	68%	57%	45%	35%
9:00AM	71%	59%	65%	63%	55%	48%
10:00AM	80%	71%	78%	70%	61%	53%
11:00AM	79%	71%	76%	71%	53%	49%
12:00PM	73%	66%	65%	36%	35%	32%
1:00PM	44%	42%	47%	35%	33%	35%
2:00PM	42%	38%	40%	36%	23%	33%
3:00PM	22%	17%	20%	24%	13%	20%
4:00PM	19%	15%	18%	18%	9%	15%
5:00PM	36%	32%	36%	18%	11%	17%
6:00PM	58%	53%	61%	55%	37%	29%
7:00PM	50%	47%	47%	47%	32%	24%
8:00PM	40%	40%	39%	36%	24%	17%
9:00PM	40%	39%	38%	27%	12%	9%
10:00PM	4%	4%	-	3%	2%	2%

**Note:** Fall 1997 data not available

**Source:** *University System Facilities Curriculum Room Utilization Report: Fiscal Year 1998.* 1999, Board of Regents.

## Buildings, Improvement & Renovations, FY 98-99

Campus	Building	Improvement & Renovation Projects	Improvement & Renovation Costs	Gross Square Footage	Total Replacement Values
Clarkston	Building-CH	Testing Center and OIT Training Facility	\$445,600.00	508,505	<b>\$39,214,895.00</b>
	Multiple Buildings	Modification to Stairwells for Code compliance	\$126,200.00		
		Refinish/Waterproofing Concrete Panels CA, CB, CD, CE, CG & CH	\$229,350.00		
Decatur	Bldg SC	Renovate Swimming Pool	\$347,500.00	192,431	<b>\$13,411,960.00</b>
	Bldg SB	Faculty Office Carpet	\$20,357.00		
	Bldg SB & SC	Masonry Restoration & Repairs	\$57,600.00		
Dunwoody		Reforestation Project	\$141,080.00	246,091	<b>\$20,715,110.00</b>
		New Fire Alarm System	\$51,205.00		
		Installation of Water Service Back flow Preventers	\$34,109.00		
	Plant Ops	Relocation of Bldg	\$247,350.00		
		Extension of Campus Utilities to Future Building Sites	\$637,239.00		
	Bldg NC	Relocation of Language Lab	\$65,733.00		
Lawrenceville	Bldgs.GA & GB	Wheel Chair Lifts installed	\$46,177.00	81,906	<b>NA</b>
Rockdale				26,501	<b>NA</b>
All Campuses		Directional Signage	\$203,248.00	1,055,434	<b>NA</b>
<b>Total</b>			<b>\$2,652,748.00</b>	<b>1,055,434</b>	<b>NA</b>

Note: All the codes in the table have two capital letters. The first is the code for campus and the second code for building.



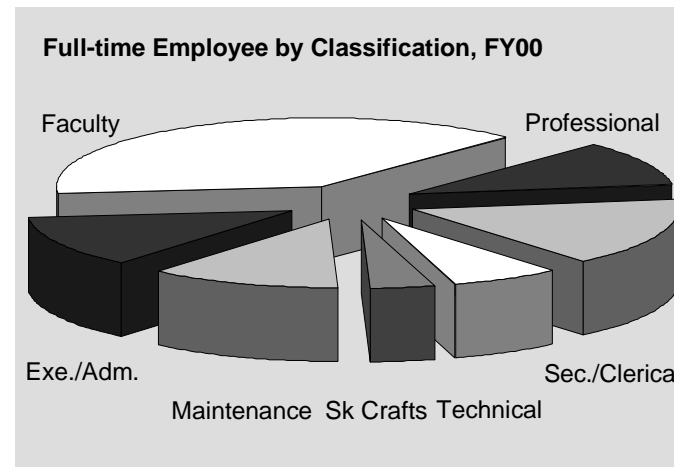
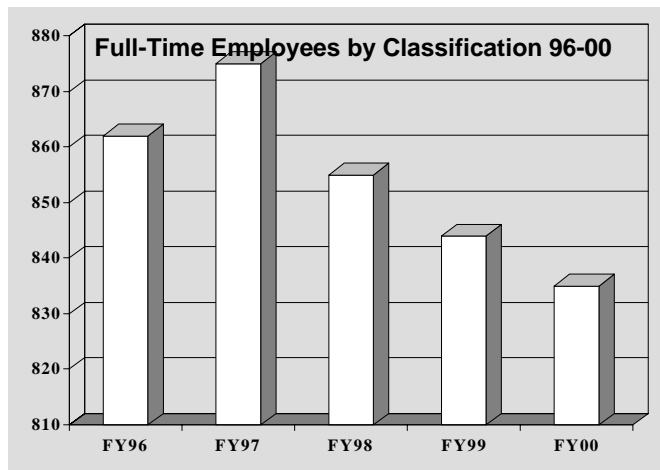
# Employees

---



# Full-Time Employees by EEO Classification, FY 1996-2000

EEO Category	1996	1997	1998	1999	2000
Executive/Administration/Managerial	103	106	104	104	102
Faculty	332	333	312	303	325
Professional Staff	81	85	98	94	88
Secretarial/Clerical	182	186	164	163	135
Technical/Paraprofessional	33	34	43	47	56
Skilled Crafts	31	31	33	32	31
Service Maintenance	100	100	101	101	98
<b>Totals</b>	<b>862</b>	<b>875</b>	<b>855</b>	<b>844</b>	<b>835</b>



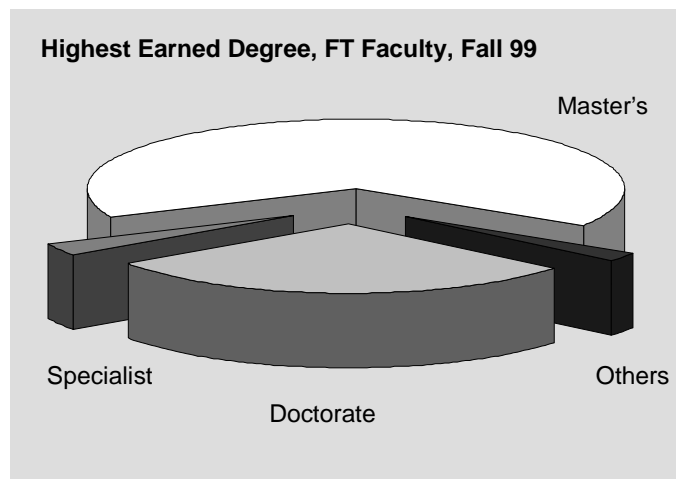
## Corps of Instruction – All Campuses, Fall 1999

	Instructional Faculty	Library Faculty	Dept Head/ Coor/ Acad Dir	Deans Academic	Other Members of the Corps	Total
<b>Rank</b>						
Professor	19	0	5	2	1	27
Assoc. Professor	76	1	5	2	1	85
Asst. Professor	155	5	17	0	1	178
Instructor	75	4	5	0	1	85
Unranked	0	3	5	0	10	18
<b>Gender</b>						
Male	130	3	14	1	5	153
Female	195	10	23	3	9	240
<b>Race</b>						
Asian	15	0	0	0	1	16
Black	65	2	6	0	5	78
Hispanic	6	0	0	0	0	6
Native American	1	0	0	0	0	1
White	238	11	31	4	8	292
<b>Tenure</b>						
Tenured	188	0	20	3	0	211
On Track	75	0	4	1	1	81
Not Eligible*	62	13	13	0	13	101
<b>Highest Degree</b>						
Doctorate	102	1	12	4	9	128
Specialist	14	0	5	0	2	21
Master's	209	12	20	0	3	244
<b>Total</b>	<b>325</b>	<b>13</b>	<b>37</b>	<b>4</b>	<b>14</b>	<b>393</b>

\*Not eligible/not on track

# Highest Earned Degree, Full-Time Teaching Faculty, Fall 1999

Academic Area	Doctorate	Specialist	Master's	Others	Total
Business Administration	4	0	18	1	23
Fine Arts	1	1	7	0	9
Foreign Language	2	0	9	0	11
Health Sciences/Physical Education	5	2	24	1	32
Humanities/Honors	26	0	68	0	94
Math/Computer Science	10	4	52	1	67
Science	24	1	10	0	35
Social Sciences	22	2	12	0	36
Interpreter Training	0	0	0	4	4
Unclassified	1	0	13	0	14
<b>Total</b>	<b>95</b>	<b>10</b>	<b>213</b>	<b>7</b>	<b>325</b>
<b>% of FT Faculty</b>	<b>29.2%</b>	<b>3.1%</b>	<b>65.5%</b>	<b>2.2%</b>	<b>100.0%</b>

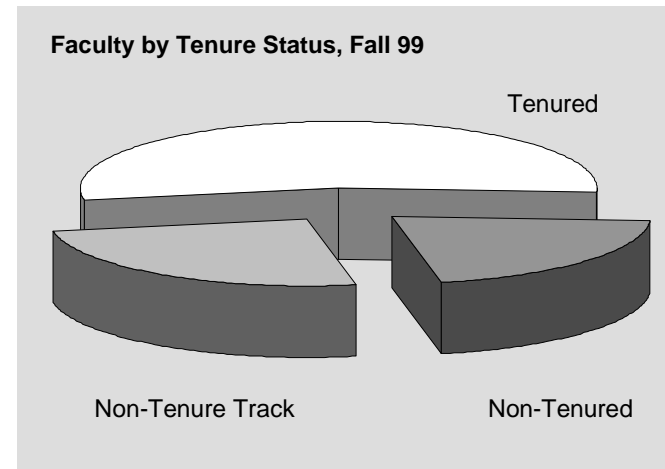
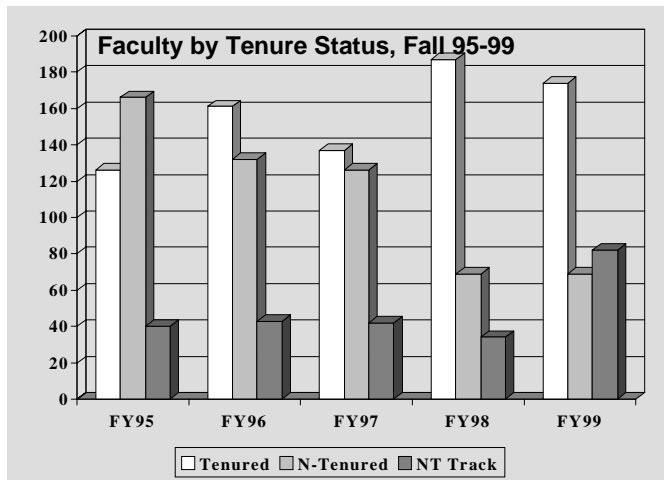


## Faculty Distribution by Rank and Race, Fall 1995-99

Academic Rank	Fall 95		Fall 96		Fall 97		Fall 98		Fall 99	
	#	%	#	%	#	%	#	%	#	%
<b>Professor</b>	<b>18</b>	<b>5%</b>	<b>17</b>	<b>0%</b>	<b>17</b>	<b>6%</b>	<b>20</b>	<b>7%</b>	<b>15</b>	<b>5%</b>
Asian	0	0%	0	0%	0	0%	0	0%	0	0%
Black	0	0%	0	0%	0	0%	0	0%	0	0%
Hispanic	0	0%	0	0%	0	0%	0	0%	0	0%
Native American	0	0%	0	0%	0	0%	0	0%	0	0%
White	18	100%	17	100%	17	100%	20	100%	15	100%
<b>Associate Professor</b>	<b>78</b>	<b>23%</b>	<b>89</b>	<b>26%</b>	<b>80</b>	<b>26%</b>	<b>78</b>	<b>27%</b>	<b>73</b>	<b>22%</b>
Asian	0	0%	2	2%	3	4%	3	4%	3	4%
Black	10	13%	10	11%	10	13%	11	14%	10	14%
Hispanic	0	0%	0	0%	1	1%	3	4%	3	4%
Native American	0	0%	0	0%	0	0%	0	0%	1	1%
White	68	87%	77	87%	66	83%	61	78%	56	77%
<b>Assistant Professor</b>	<b>152</b>	<b>46%</b>	<b>161</b>	<b>48%</b>	<b>161</b>	<b>53%</b>	<b>149</b>	<b>51%</b>	<b>147</b>	<b>45%</b>
Asian	4	3%	4	2%	4	2%	5	3%	5	3%
Black	27	18%	34	21%	30	19%	31	21%	30	20%
Hispanic	3	2%	3	2%	2	1%	1	1%	1	1%
Native American	0	0%	0	0%	0	0%	0	0%	0	0%
White	118	78%	120	75%	125	78%	112	75%	111	76%
<b>Instructor</b>	<b>84</b>	<b>25%</b>	<b>69</b>	<b>21%</b>	<b>47</b>	<b>15%</b>	<b>42</b>	<b>14%</b>	<b>86</b>	<b>26%</b>
Asian	4	5%	5	7%	2	4%	2	5%	6	7%
Black	23	27%	20	29%	18	38%	10	24%	24	28%
Hispanic	0	0%	1	1%	1	2%	2	5%	2	2%
Native American	0	0%	0	0%	0	0%	0	0%	0	0%
White	57	68%	43	62%	26	55%	28	67%	53	62%
<b>Unranked</b>	<b>0</b>	<b>0%</b>	<b>0</b>	<b>0%</b>	<b>0</b>	<b>0%</b>	<b>1</b>	<b>0%</b>	<b>4</b>	<b>1%</b>
Asian	0	0%	0	0%	0	0%	0	0%	0	0%
Black	0	0%	0	0%	0	0%	1	100%	0	0%
Hispanic	0	0%	0	0%	0	0%	0	0%	0	0%
Native American	0	0%	0	0%	0	0%	0	0%	0	0%
White	0	0%	0	0%	0	0%	0	0%	4	100%
<b>Total</b>	<b>332</b>		<b>336</b>		<b>305</b>		<b>290</b>		<b>325</b>	

# Faculty Distribution by Tenure Status, Fall 1995-99

Year	Tenured		Non-Tenured		Non-Tenure Track		Total
	#	%	#	%	#	%	#
Fall95	126	43	166	57	40	14	332
Fall96	161	56	132	46	43	15	336
Fall97	137	47	126	43	42	14	305
Fall98	187	64	69	24	34	12	290
Fall99	174	54	69	21	82	25	325



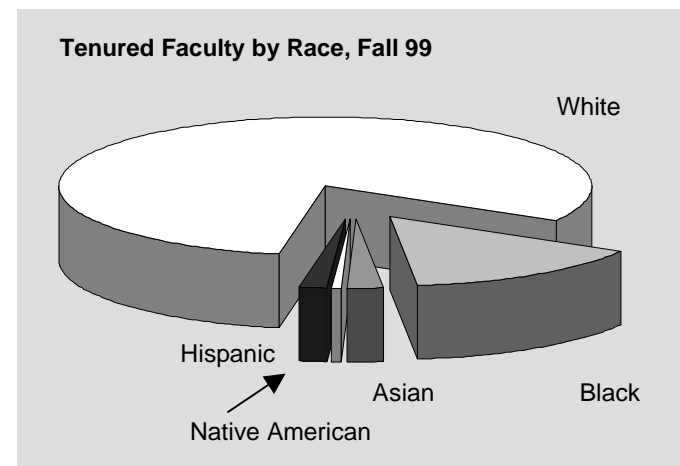
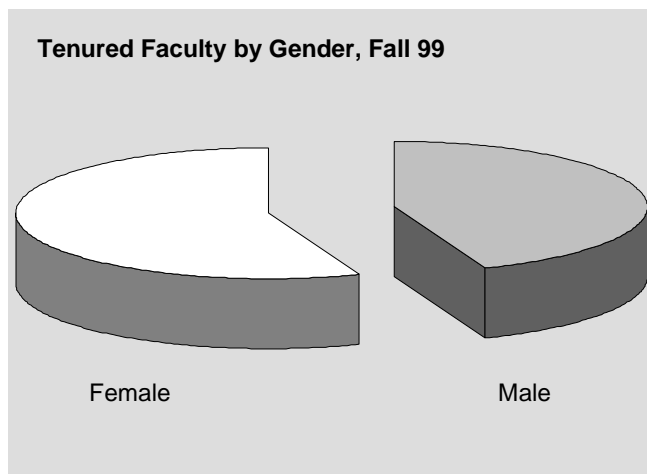
## Tenure Status by Academic Area, Gender & Race, Fall 1999

Academic	Tenured	Non-Tenured	NT Track	Total
Business	18	2	3	23
Fine Arts	4	3	2	9
Foreign Languages	6	3	2	11
Health Sci./Phys. Ed.	20	8	4	32
Humanities/Honor	55	21	18	94
Math/CS/ENGR	35	14	18	67
Science	19	8	8	35
Social Sciences	17	10	9	36
Interpreter Training	0	0	4	4
Unclassified	0	0	14	14
<b>Total</b>	<b>174</b>	<b>69</b>	<b>82</b>	<b>325</b>

Gender	Tenured	Non-Tenured	NT Track	Total
Male	77	21	33	131
Female	97	48	49	194
<b>Total</b>	<b>174</b>	<b>69</b>	<b>82</b>	<b>325</b>

Race	Tenured	Non-Tenured	NT Track	Total
Black	26	16	23	65
Asian	4	6	4	14
Native American	1	0	0	1
Hispanic	3	2	1	6
White	140	45	54	239
<b>Total</b>	<b>174</b>	<b>69</b>	<b>82</b>	<b>325</b>



## Faculty Workload by Area, Fall 1998 vs 1999; by Campus, Fall 1999

Area	Sections Taught		Students Taught		FTF	PTF	Average Class		Part-time %	
	Fall 98	Fall 99	Fall 98	Fall 99	Classes Fall 99	Classes Fall 99	Fall 98	Fall 99	Fall 98	Fall 99
ATEC	63	81	1,189	1,770	49	32	19	22	47.6%	39.5%
Business	160	152	3,732	3,267	93	59	23	21	36.9%	38.8%
Dental Hygiene	6	8	46	184	7	1	8	23	16.7%	12.5%
Distance Education	N/A	37	N/A	1,072	37	0	N/A	29	N/A	0
ENSL	37	43	616	692	28	15	17	16	24.3%	34.9%
FIRE	1	1	12	10	0	1	12	10	100.0%	100.0%
HEDS	31	30	524	446	9	21	17	15	48.4%	70.0%
HITE	1	0	17	0	0	0	17	N/A	0	N/A
Humanities/Fine Arts	533	550	10,225	9,291	296	254	19	17	49.6%	46.2%
Interpreter Training	18	17	204	162	10	7	11	10	55.6%	41.2%
Joint Enrollment	35	39	646	612	10	29	18	16	91.4%	74.4%
Learning Support	295	290	5,237	5,351	171	119	18	18	38.6%	41.0%
Mathematics	213	238	5,454	4,850	160	78	26	20	36.2%	32.8%
Nursing	31	15	542	530	14	1	17	35	32.3%	6.7%
Physical Education	68	110	2,298	1,774	65	45	34	16	44.1%	40.9%
Science (Laboratory)	132	142	2,608	2,436	78	64	20	17	50.8%	45.1%
Science (Lecture)	164	169	3,198	3,037	107	62	20	18	43.9%	36.7%
Social Science	292	279	7,722	6,979	151	128	26	25	58.2%	45.9%
Telecourses	22	N/A	743	N/A	N/A	N/A	34	N/A	45.9%	N/A
College Total	2,102	2,201	45,013	42,463	1,285	916	21	19	45.1%	41.6%
Campus	Sections Taught Fall 99	Students Taught Fall 99	FTF Classes Fall 99	PTF Classes Fall 99	Average Class Size, Fall 99	Part-time % Fall 99				
Clarkston	732	13,422	468	264	18	36.1%				
Decatur	189	2,959	132	57	16	30.2%				
Dunwoody	729	14,228	396	333	20	45.7%				
Lawrenceville	422	9,809	238	184	23	43.6%				
Rockdale	129	2,045	51	78	16	60.5%				



# References

---



# Quick Reference I for Georgia Perimeter College

## Number of Students On & Off Campus, Fall 1999

<b>Total Headcount (Unduplicated)</b>	<b>14,091</b>
Headcount by Gender: Male	5,606
Female	8,485
Headcount by Race: Asian	1,190
Black	4,376
Hispanic	480
Multiracial	367
Native American	40
White	7,638
Headcount by Campus: Decatur	1,274
Clarkston	4,933
Dunwoody	4,797
Lawrenceville	3,252
Rockdale	757
Off campus/Distance Education	1,517
<b>Equivalent Full-Time</b>	<b>8,253</b>
<b>Total Cont. &amp; Corp. Ed. Participants</b>	<b>5,967</b>

## Degrees Awarded FY 99

<b>Total Awarded</b>	<b>1,119</b>
Associate of Arts	117
Associate of Science	959
Associate of Applied Science	31
Certificate	12

## Degrees by Campus

Clarkston	468
Lawrenceville	199
Dunwoody	334
Decatur/Rockdale	118

## Degrees by Race

Asian	48
Black	237
Hispanic	13
Native American	2
Multiracial	7
White	445

## Enrollment by County Fall 1999

Cherokee	54
Clarke	29
Clayton	173
Cobb	546
DeKalb	3,493
Douglas	36
Fayette	29
Forsyth	92
Fulton	2,014
Gwinnett	3,516
Henry	84
Newton	206
Rockdale	534
Others in-State	497
Out-of-State	2,788

## Tuition and Fees Fall 1999

<b>Tuition (per hour)</b>	
In-State	\$53.00
Out-of-State	\$213.00
<b>Required Fees</b>	
Application (one time only)	\$20.00
Matriculation (Tuition)	\$53.00
Parking	\$8.00
Student Activity	\$42.00
Student Athletic	\$15.00
Technology	\$38.00
<b>Special Fees</b>	
Applied Music	\$75.00
Dental Hygiene Insurance	\$8.00
Late Payment	\$38.00
Nursing Insurance/Test	\$15.00
Tele Course	\$50.00
Int'l Student Health Insurance	\$265.00

## Full-Time Employees FY 2000

Executive/Adm./Managerial	102
Faculty	325
Professional Staff	88
Secretarial/Clerical	135
Technical/Paraprofessional	56
Skilled Crafts	31
Service Maintenance	98
<b>Totals</b>	<b>835</b>



# Quick Reference II for Georgia Perimeter College

Georgia Demographics	
<b>Population 1999</b>	7,642,207
<b>Population by Race</b>	
Asian	2.0%
Black	28.5%
Hispanic	2.9%
Native American	0.2%
White	66.4%
<b>Population by Age</b>	
0-17	26.4%
18-24	9.9%
25-44	32.7%
45-64	21.2%
65 and over	9.8%
<b>Educational Attainment for Adult 25 Years Old and Over, 1998</b>	
Total Adult	4,699,000
High School Graduate & More	80.0%
Completed Bachelor's & More	20.7%
<b>Income and Poverty, 1998</b>	
Personal Income Per Capita	\$22,201
Median Household Income	\$38,665
Percent below Poverty Level	13.6%

Labor Force					
Civilian Popu. Employed 97	64.1%				
Nonfarm Employment 98 (in Manufacturing)	15.9%				
Average Annual Pay	\$29,020				
<b>State Government</b>					
General Revenue Per Capita 97	\$2,632				
<b>State Education Enrollment Rate</b>					
Public Elementary-Secondary 96	96.3%				
FT College, Percent of total	67.3%				
<b>Note:</b> 1. Elementary-Secondary enrollment rate is percentage of people 5-17 years old. 2. Full-time College enrollment rate is for school year ending in June the following year.					
Population Projection 2000 - 2025					
	White	Black	Native Am	Asia	Total
00	69%	29%	0.2%	2.0%	7,874,792
05	68%	30%	0.2%	2.0%	8,412,686
10	67%	31%	0.2%	2.1%	8,823,902
15	66%	32%	0.2%	2.2%	9,199,751
20	65%	33%	0.2%	2.4%	9,551,672
25	64%	34%	0.2%	2.5%	9,869,427

Population of Counties in the GPC Service Region 1999	
Cherokee	141,686
Clarke	90,638
Clayton	216,727
Cobb	583,541
DeKalb	596,853
Douglas	91,175
Fayette	92,378
Forsyth	96,686
Fulton	744,827
Gwinnett	545,632
Henry	113,443
Newton	60,583
Rockdale	68,968
<b>Total Population of the Region</b>	<b>3,443,137</b>

Source: 1. U.S. Census Bureau , various publications, except population projection  
2. Selig Center, University of Georgia, *Projected Population by Race, Georgia, 1995-2025*

# A Directory for Georgia Perimeter College

## GPC District Offices

Academic Affairs VP	404-244-2371
Accounting	404-244-2269
Admissions and Records	404-299-4564
Alumni Relations	404-244-5704
Athletics	770-551-3196
Disability Services	404-299-4038
Distance Learning	404-294-3494
Financial Aid	404-299-4006
Human Resources	404-244-5934
ID Card Services	404-294-3597
International Center	404-298-4830
Institutional Research and Planning	404-244-2261
Public Relations	404-244-2265
Recruitment and Retention	404-299-4078
Student Accounts	404-299-4032
VP for Student Affairs	404-244-2262

## GPC Campus Offices

<b>Clarkston</b>	
Registrar and Admissions	404-299-4035
Continuing and Corporate Education	404-298-4903
Financial Aid	404-299-4006
Student Accounts	404-299-4032

## GPC Campus Offices

<b>Decatur</b>	
Registrar and Admissions	404-244-5036
Student Accounts	404-244-5020
Financial Aid	404-244-2983
<b>Dunwoody</b>	
Registrar and Admissions	770-551-3010
Student Accounts	770-551-3023
Financial Aid	770-551-7287
<b>Lawrenceville</b>	
Registrar and Admissions	770-339-2382
Student Accounts	770-339-2302
Financial Aid	770-339-5203
<b>Rockdale</b>	
Advising and Counseling	770-785-6970
Student Accounts	770-785-6990