

Preface

The 2000-2001 edition of *The Georgia Perimeter College Fact Book* provides a comprehensive statistical picture of Georgia Perimeter College. This book presents enrollment, faculty and staff data, financial reports, and other information for the Georgia Perimeter College and its campuses at Clarkston, Decatur, Dunwoody, Lawrenceville, and the Alpharetta and Rockdale Centers.

All enrollment data are based on students enrolled on October 18, 2000. All administrative and academic information is based on data as of October 2000. All fiscal year data are collected as of June 30, 2000. The definitions and guidelines used in this book are consistent with the Integrated Post-secondary Education Data System (IPEDS) and policies of the Board of Regents of the University System of Georgia. All the data sources, unless noted, are from GPC's Institutional Research and Planning Office.

The Georgia Perimeter College Fact Book 2000-2001 is a publication produced by the Office of Institutional Research and Planning. It is also a product of cooperative efforts of the many offices and campuses of Georgia Perimeter College. Mr. Ron Carruth, Executive Vice President of Finance and Administration, gave invaluable direction and support to the whole process. Dr. Grace McNamara and Dr. Patricia Gregg contributed in thorough proofreading the document. Their efforts are gratefully acknowledged and thanked.

The electronic version of the *Fact Book* is accessible to the public on World Wide Web via Georgia Perimeter College's home page at www.gpc.peachnet.edu or directly at <http://www.gpc.peachnet.edu/~irp/>.

Inquiries and comments regarding this document are sincerely welcome and may be directed to the Institutional Research and Planning Office (College District Offices, 3251 Panthersville Road, Decatur, GA 30034; Phone: 404-244-2261; Fax: 404-244-2373; E-mail at lfincher@gpc.peachnet.edu).

Kuan R. Yang, Ph.D., Director, Institutional Research and Planning

B. Edward Hale, Ph.D., Assistant Director, Institutional Research and Planning

Lashay Fincher, Administrative Secretary, Institutional Research and Planning

President's Message

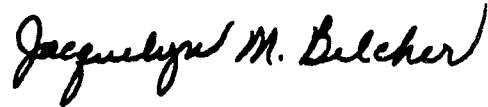
Welcome to *The Georgia Perimeter College Fact Book 2000-2001*. In this book we have outlined facts and figures to help you understand the integral role Georgia Perimeter College plays in the lives of the people we serve. You will find information that focuses especially on the academic programs, students, and the services we provide beyond the classroom.

Upholding our proud pledge of "Students First," Georgia Perimeter College has become a premier institution of higher learning in metropolitan Atlanta, well known for being student-centered and student-friendly. Our pledge is further reflected in our commitment to diversity. As the largest associate-degree granting institution of the University System of Georgia, the College serves students from 122 different countries.

Containing more than just trends, this year's *Fact Book* assembles the big picture as well as snapshots of Georgia Perimeter College's continued excellence in higher education. This is a book showing where we have traveled from to get to where we are today.

Congratulations to all of you who made the accomplishments in this book possible.

Sincerely,



Dr. Jacquelyn M. Belcher
President, Georgia Perimeter College

Table of Contents (Continued)

High Schools Attended by 100 or More, 1999-2000	48
International Student Enrollment I, Fall 1996-2000	49
International Student Enrollment II, Fall 1996-2000	50
Retention Rate, Fall 1998-99	51
Enrollment by Class Size, FY 1987-00	51
Student Financial Aid Awarded by Source, FY 96-00	52
Entering Freshman Average SAT & High School GPA, FY 1997 & 01	53
Applications Received, Fall 1996-2000	54
Testing Activities, FY 1996-2000	54
Transfer Activities, FY 1999	55
Comparison with USG 2-Year Colleges, Fall 2000	56
Athletics, FY 2000	57

FUNDING AND FACILITIES	59
Student Tuition and Fees, FY 2001-2002	61
Revenues and Expenditures Per Student, FY 1997-2001	62
Budget Allocations, FY 1997-2001	63
Library Collections, FY 1996-00	64
Classrooms in Use by Campus, Day, and Hour, Fall 2000	65
Average Weekly Percentage of General Classrooms in Use by Hour, Fall 1994-1998	66
Buildings, Improvement & Renovations, FY 99-00	67

EMPLOYEES	69
Full-Time Employees by EEO Classification, FY 1997-2001	71
Corps of Instruction-All Campuses, Fall 2000	72
Highest Earned Degree, Full-Time Teaching Faculty, Fall 2000	73
Faculty Distribution by Rank and Race, Fall 1996-00	74
Faculty Distribution by Tenure Status, Fall 1996-00	75
Tenure Status by Academic Area, Gender, & Race, Fall 2000	76
Faculty Workload by Area, Fall 1999 vs 2000; By Campus, Fall 2000	77

REFERENCES	79
Quick Reference I for Georgia Perimeter College	81
Quick Reference II for Georgia Perimeter College	82
A Directory for Georgia Perimeter College	83

Organization

Mission Statement

A community committed to learning and to becoming a preeminent associate degree-granting institution, the faculty, staff, administrators and students of Georgia Perimeter College share the following aspirations:

- To gain national recognition as a community of learners
- To assume a national leadership role in developing creative, technologically-advanced academic and student services programs
- To serve as a model for other institutions in developing collaborative partnerships to deliver public services, technical assistance, lifelong learning and economic development training

A regional, multi-campus unit of the University System of Georgia, Georgia Perimeter College strives to meet the changing expectations of our diverse collegiate and community constituencies by providing effective, innovative, lifelong educational opportunities. We are committed to diversity, continuous improvement, high academic standards and the efficient use of resources. In decision-making at all levels, the enhancement of our students' lives is our first priority.

Georgia Perimeter College, a nonresidential institution, serves diverse populations of traditional and nontraditional students in Greater Metropolitan Atlanta.

Placing learning first, we provide accessible and affordable high quality undergraduate credit and non-credit programs for students seeking to complete an associate degree, transfer to a senior college or university, prepare for immediate entry into a career, pursue personal goals or enhance current workplace skills. Our curriculum specializes in liberal arts and professional preparation and promotes international and intercultural understanding. We also serve the broader community as an educational, cultural and economic resource.

Our academic programs and student support services focus on careful assessment of our learners' abilities, achievements and needs; accommodations of their special requirements and resources; and guidance in the development and realization of their expectations and goals. We thus offer specialized sequences of courses and support programs that promote academic and personal success for students of varying levels of academic preparation. We encourage excellence in teaching, provide a technologically advanced learning environment, support innovative strategies for meeting the learning styles of all students and promote learning by engaging students actively and collaboratively.

Mission Statement (Continued)

In meeting the educational needs of the citizens of Georgia for the 21st century, we share with all other institutions in the University System of Georgia the following characteristics:

- A supportive campus climate, necessary services and leadership and development opportunities, all to educate the whole person and meet the needs of students, faculty and staff
- Cultural, ethnic, racial and gender diversity in the faculty, staff and student body, supported by practices and programs that embody the idea of an open, democratic and global society
- Technology to advance educational purposes, including instructional technology, student support services and distance education
- Collaborative relationships with other System institutions, State agencies, local schools and technical institutes, and business and industry, sharing physical, human, information and other resources to expand and enhance programs and services available to the citizens of Georgia.

Georgia Perimeter College shares the following commitments to the citizens of Georgia with other associate-degree level colleges of the University System of Georgia:

- A commitment to excellence and responsiveness within a scope of influence defined by the needs of the local area and by particularly outstanding programs or distinctive characteristics that have a magnet effect throughout the region or state
- A commitment to a teaching/learning environment, both inside and outside the classroom, that sustains institutional excellence, functions to provide University System access for a diverse student body and promotes high levels of student learning
- A commitment to a high quality general education program that supports a variety of well-chosen associate programs and prepares students for transfer to baccalaureate programs, learning support programs designed to ensure access and opportunity for a diverse student body and a limited number of certificate or other career programs to complement neighboring technical institute programs
- A commitment to public service, continuing education, technical assistance and economic development activities that address the needs, improve the quality of life and raise the educational level within the College's scope of influence
- A commitment to scholarship and creative work for the specific purposes of supporting instructional effectiveness and enhancing institutionally relevant faculty qualifications.

History

Founded by the citizens of DeKalb County and the DeKalb Board of Education under the Junior College Act of 1958, Georgia Perimeter College opened in 1964 as the only public junior college in the state supported and controlled by a local Board of Education. It was established in order that any resident of the DeKalb School District who held a high school diploma or its equivalent and who desired to seek two years of post-secondary education might have the opportunity to do so.

The Clarkston Campus opened in 1964 serving as the main and also the first campus of the College. The College's Decatur Campus opened in 1972. Also beginning in 1972, students enrolled in DeKalb Area Technical School were able to enroll dually in vocational and collegiate programs, and the College was designated DeKalb Community College. As growth continued both for DeKalb County and the College, the Dunwoody Campus was added and began operation in 1979. Georgia Perimeter College has pioneered in Georgia in open-door admissions, personalized approaches to instruction and community-related curricula and activities. The College's curricula feature transfer, developmental, career, and continuing education programs. Associate degrees are awarded to graduates who complete the two-year transfer and career programs. The College's academic offerings correspond with curricula content and

requirements of the University System of Georgia. The College also serves as a community cultural center for the performing arts in music and drama.

In 1985, DeKalb Vocational-Technical School was placed under the governance of a new state-wide board for vocational-technical schools. Students enrolled in specific Associate in Applied Science degree programs continue, however, to enroll dually in the College and technical school, now known as DeKalb Technical Institute.

Designed to be readily responsive to the educational needs of the community, Georgia Perimeter College began offering dual programs in cooperation with Lawrenceville Technical Institute in the fall of 1987. In addition, Georgia Perimeter College offers at its Lawrenceville Campus a broad range of courses to students seeking Associate in Arts or Associate in Science degrees. During Spring 1993, Georgia Perimeter College, in cooperation with Clayton State College, DeKalb Technical Institute, and Rockdale County Public Schools, formed the Rockdale Center for Higher Education, which offers both credit and non-credit courses.

Source: Georgia Perimeter College's Web page
www.gpc.peachnet.edu/~acadaff/cat/

Board of Regents

Board of Regents

The Board of Regents (BOR) of the University System of Georgia (USG) is composed of 16 members appointed by the Governor and confirmed by the Senate for seven-year terms. One member is appointed from each of the 11 congressional districts, and five are appointed from the state at large. The BOR exercises broad jurisdiction over all institutions of USG and establishes policies and procedures under which they operate. The BOR receives all state appropriations for the USG and allocates these appropriations to the institutions and institution-related agencies. While the BOR engages in both policy-making and administrative functions, each unit of the System has a high degree of academic and administrative autonomy.

The System currently includes 35 institutions: four research universities, two regional universities, 11 state universities, two state colleges, 15 two-year colleges and one independent research unit. These institutions are both distinctive and interrelated. They are geographically dispersed so that approximately 96 percent of the people in Georgia reside within 35 miles of at least one university or college.

Georgia Perimeter College is an associate degree-granting college of the University System of Georgia.

Members and Terms of the BOR

- **Baranco, Juanita Powell**
(01/01/98-01/01/05)
- **Carter, Hugh A.**
(08/08/00-01/01/02)
- **Cater, (Mr.) Connie**
(06/18/99-01/01/06)
- **Coles, Michael J.**
(01/09/01-01/01/08)
- **Harris, Joe Frank**
(06/18/99-01/01/06)
- **Howell, Hilton H., Jr. (V. Chair)**
(06/15/98-01/01/04)
- **Hunt, John**
(01/07/97-01/01/04)
- **Jones, Charles H.**
(01/04/95-01/01/02)
- **Leebern, Donald M., Jr.**
(01/01/98-01/05/05)
- **Magill, Allene H.**
(02/13/01-01/01/08)
- **McMillian, Eldridge W.**
(01/01/96-01/01/03)
- **NeSmith, Martin W.**
(06/18/99-01/01/06)
- **Shelnut, J. Timothy**
(08/25/00-01/01/07)
- **White, Glenn S. (Chair)**
(01/01/98-01/01/05)
- **Wooten, Joel O., Jr.**
(06/18/99-01/01/06)
- **Yancey, James D.**
(01/01/00-01/01/07)
- **Vacant-At Large**
(01/04/95-01/01/02)

Chief Executive Officer, Vice Presidents, and Provosts

Chief Executive Officer

The President of Georgia Perimeter College is the chief executive and administrative officer. The President is appointed by the Board of Regents and is directly responsible to the BOR for the conduct of the institution, the development of institutional goals, the formulation of policies, and the overall well being of the College.

The President of GPC

Dr. Jacquelyn M. Belcher
1995 - present (5th president)

The Past Presidents of GPC

- 1st-Thad W. Hollingsworth (1963-1967)
- 2nd-James H. Hinson, Jr. (1967-1977)
- 3rd-W. Wayne Scott (1977-1982)
- 4th-Marvin Cole (1982-1994)
- Martha Nesbitt (Interim 1994)

The GPC Logo



Vice Presidents

Ronald L. Carruth, Executive VP,
Financial & Administrative
Affairs

Ronald H. Sheehy, Ph.D., VP,
Academic and Student Affairs

Provosts

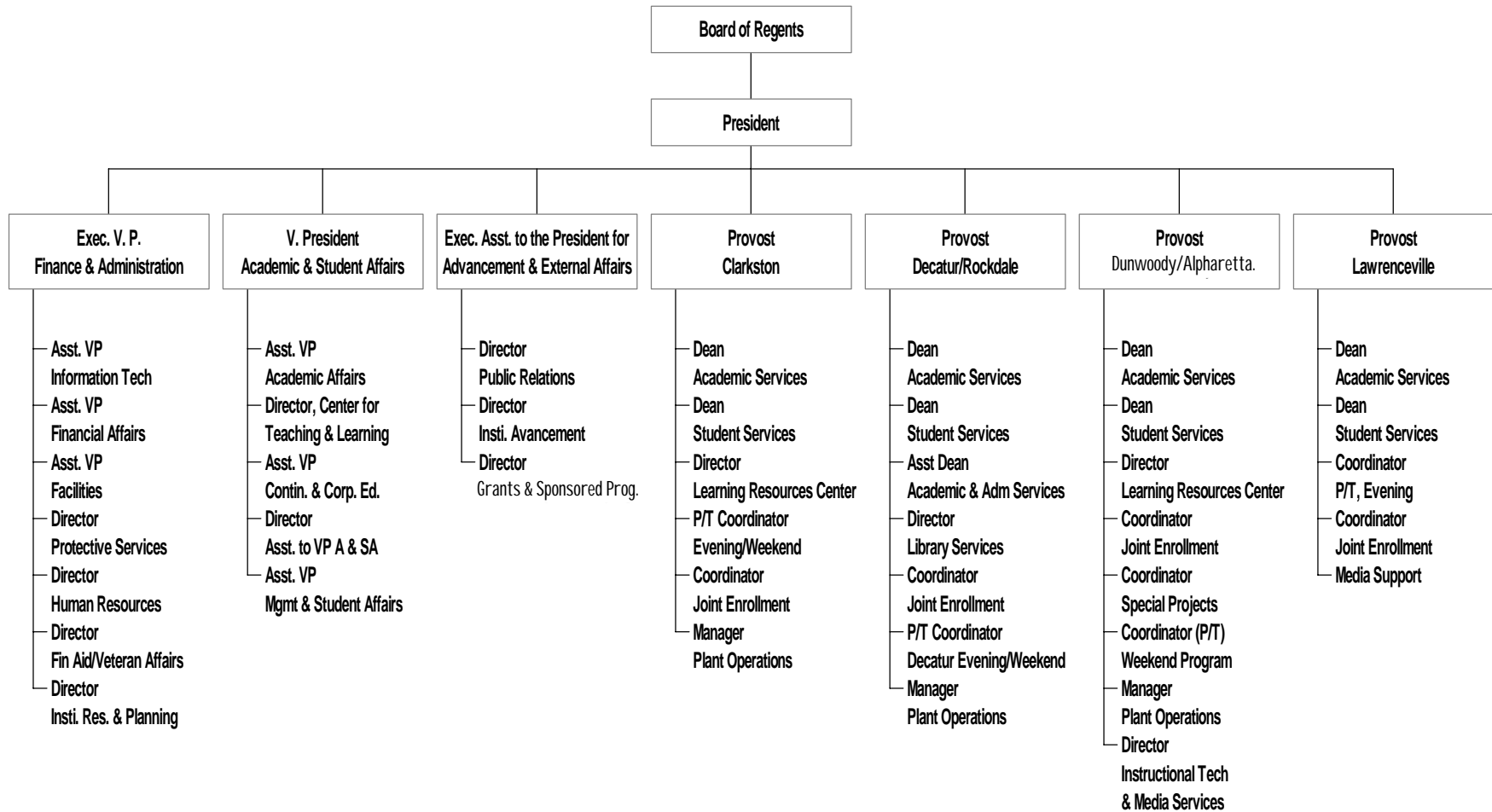
Dennis R. Harkins, Ph.D., Provost,
Clarkston Campus

Debra L. McCurdy, Ph.D., Provost,
Dunwoody Campus/Alpharetta
Center

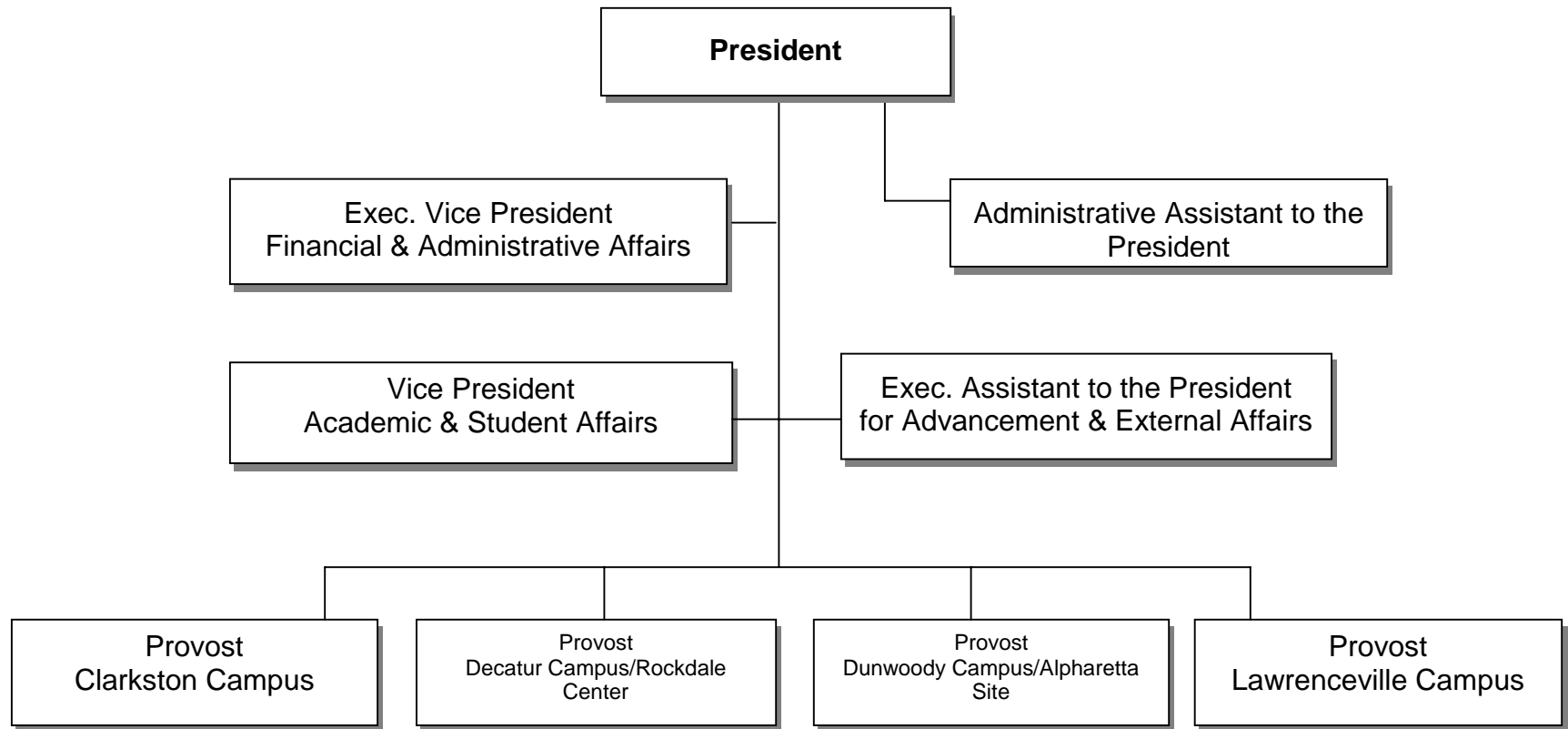
Paul Pai, Ed.D., Provost, Decatur
Campus/Rockdale Center

Sue Henderson, Interim Provost,
Lawrenceville Campus

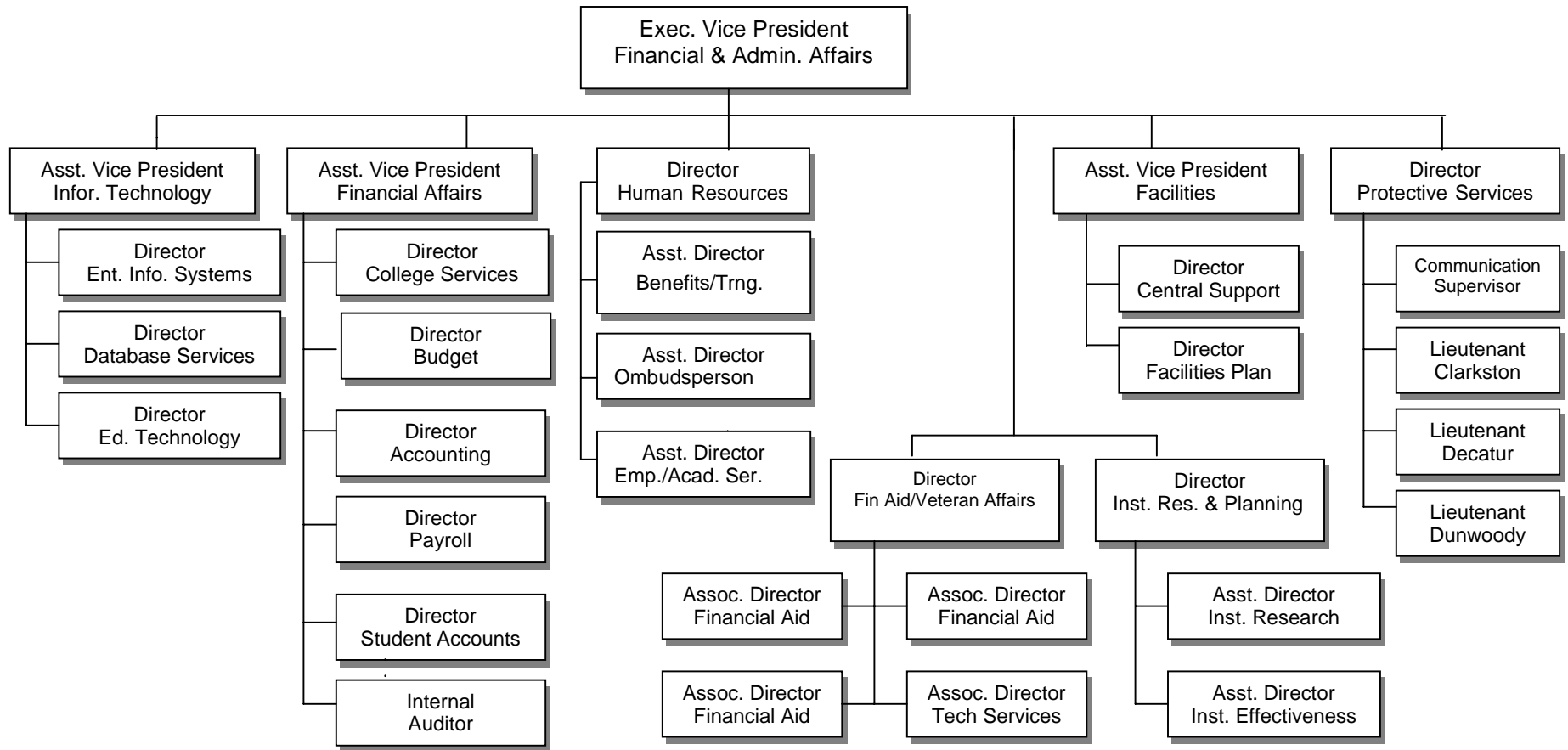
Administrative Organizational Chart FY 2001



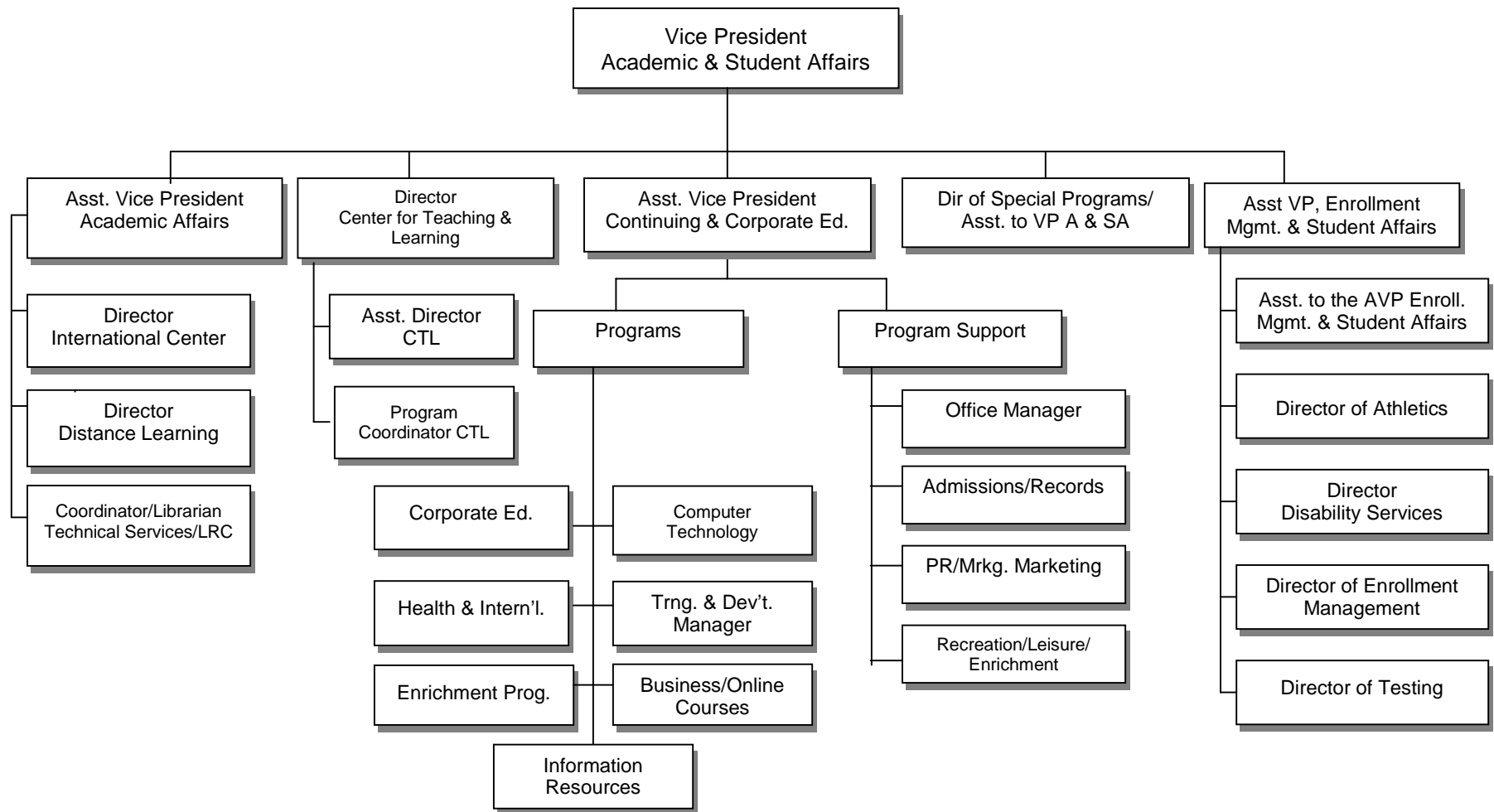
College Executive Team FY 2001



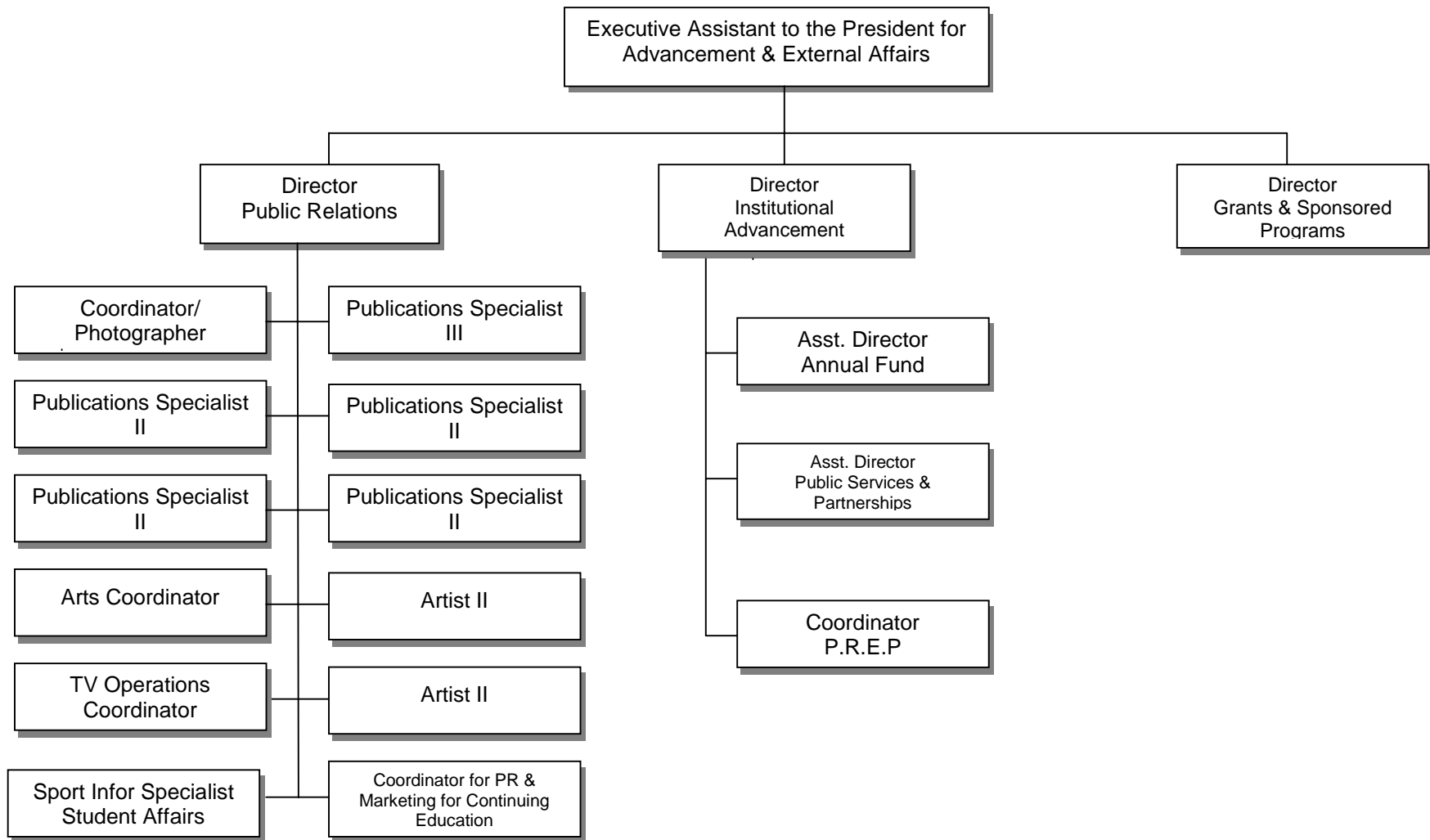
Financial and Administrative Affairs Team FY 2001



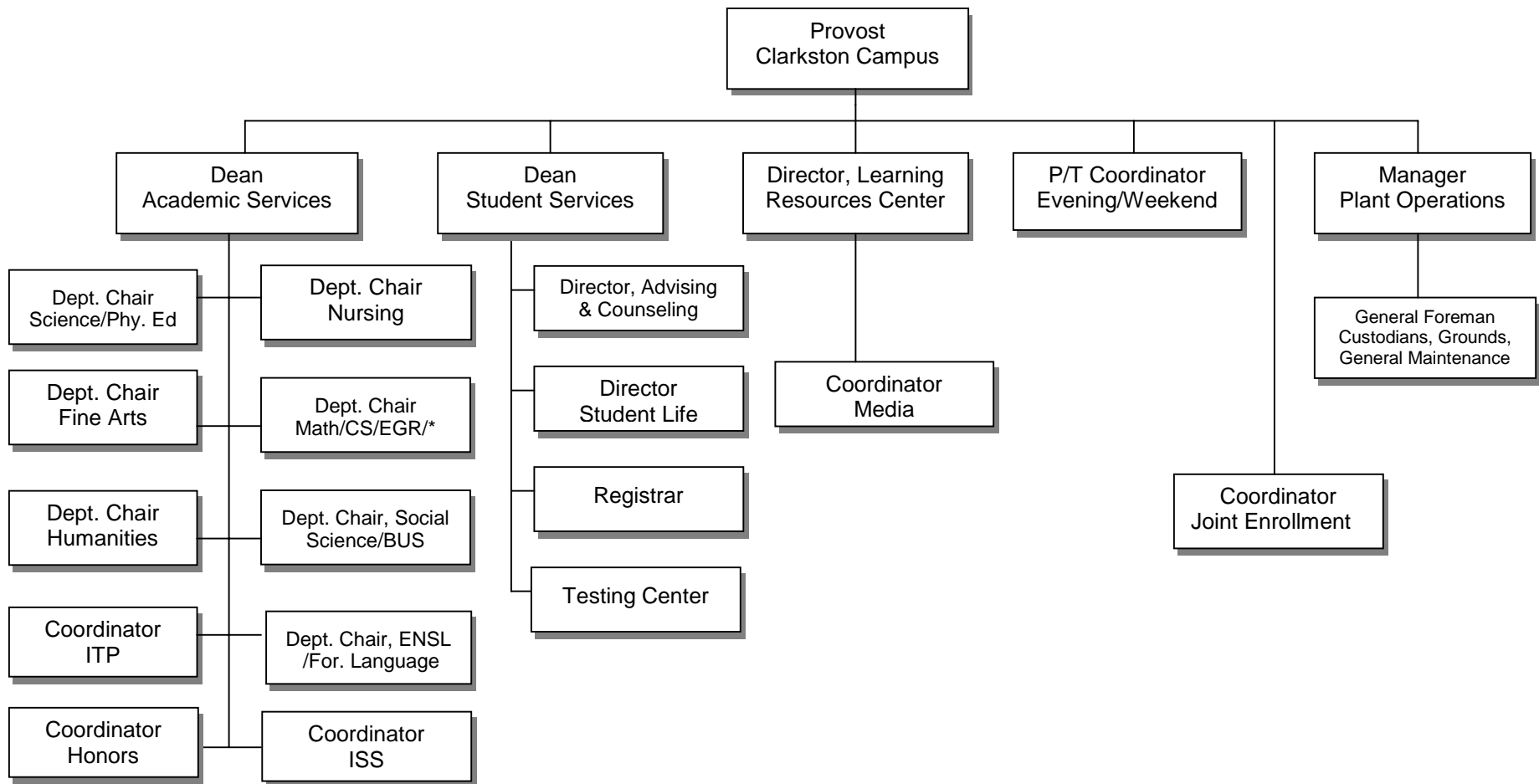
Academic and Student Affairs Team FY 2001



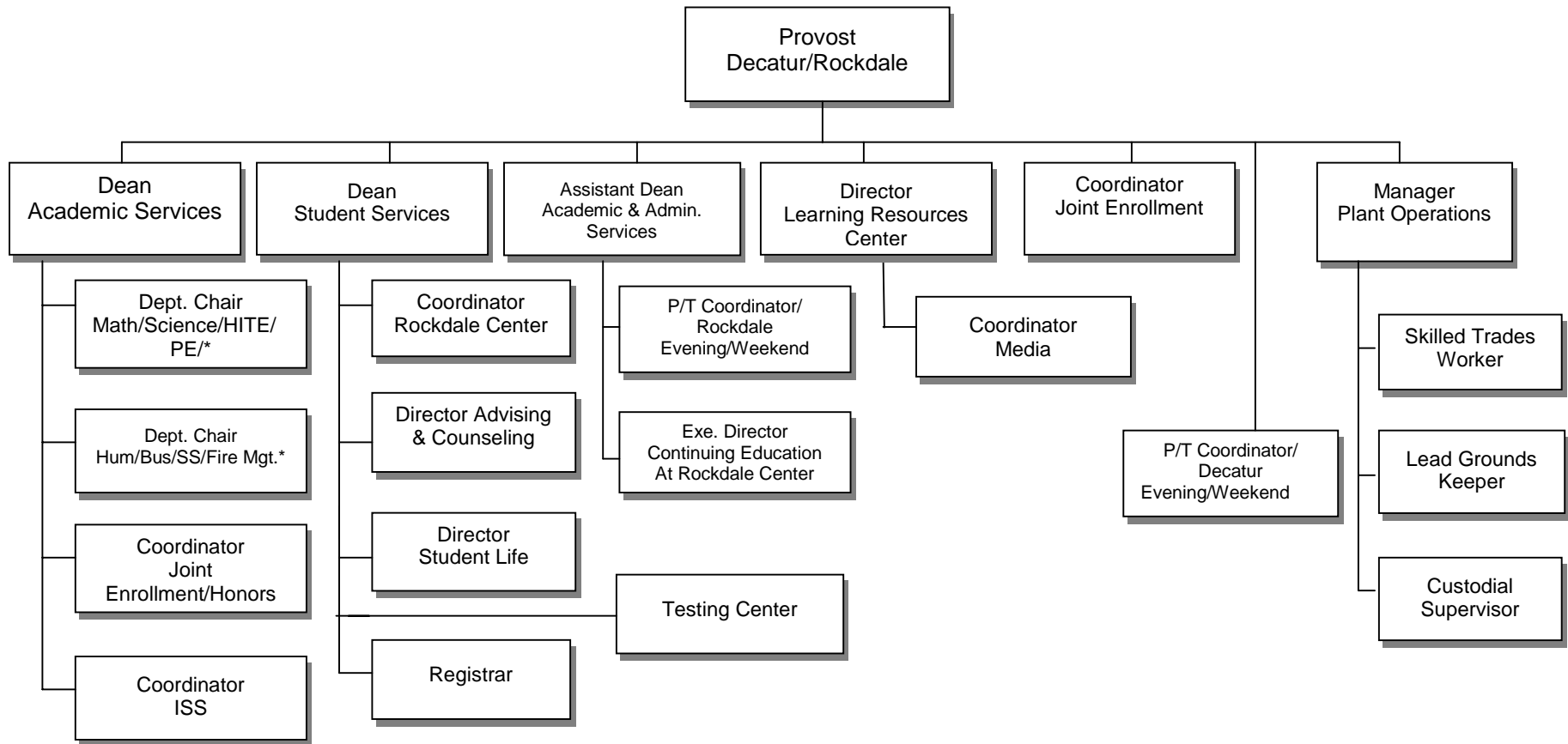
Advancement and External Affairs Team FY 2001



Clarkston Campus Team FY 2001

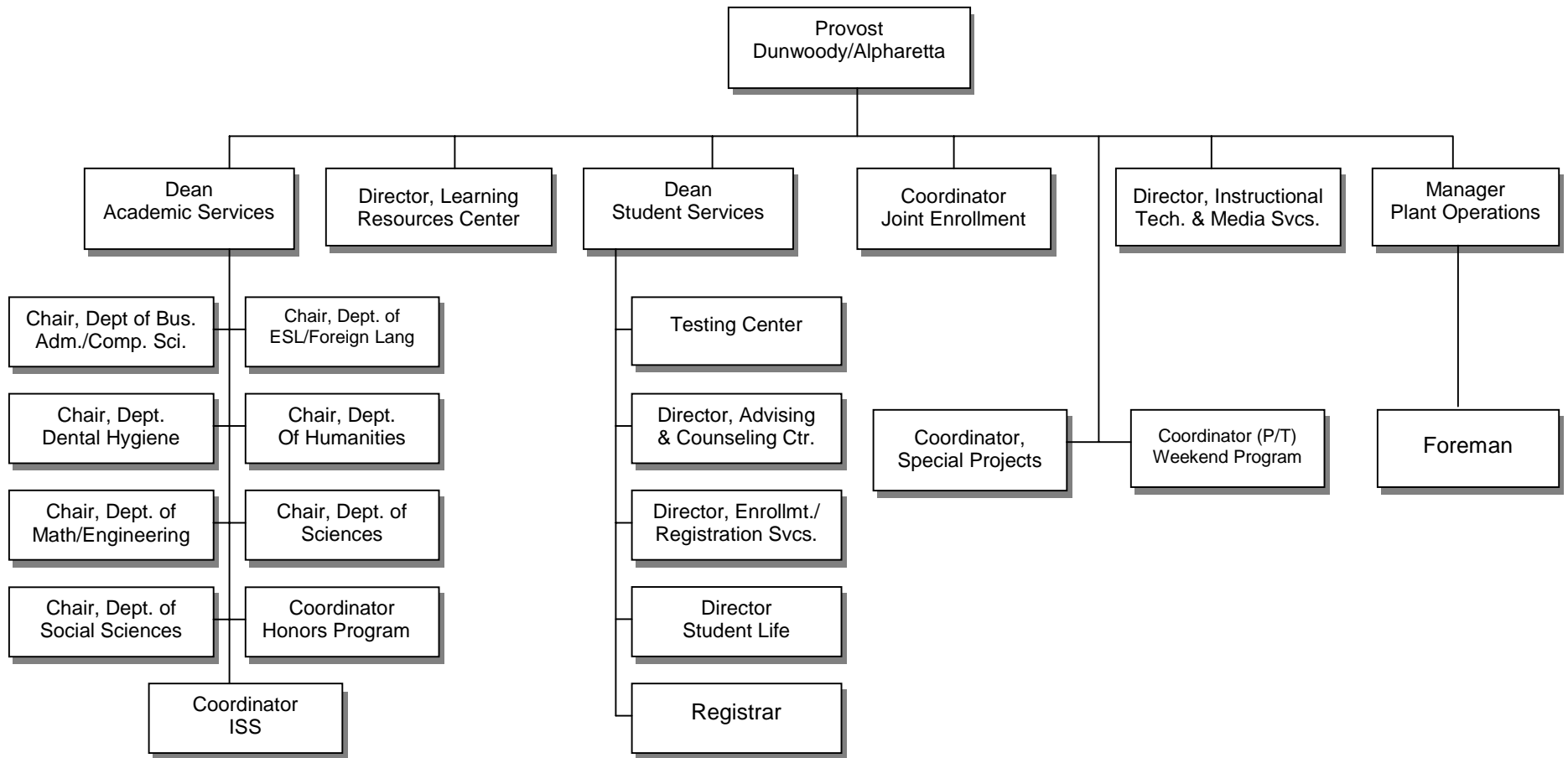


Decatur Campus/Rockdale Center Team FY 2001

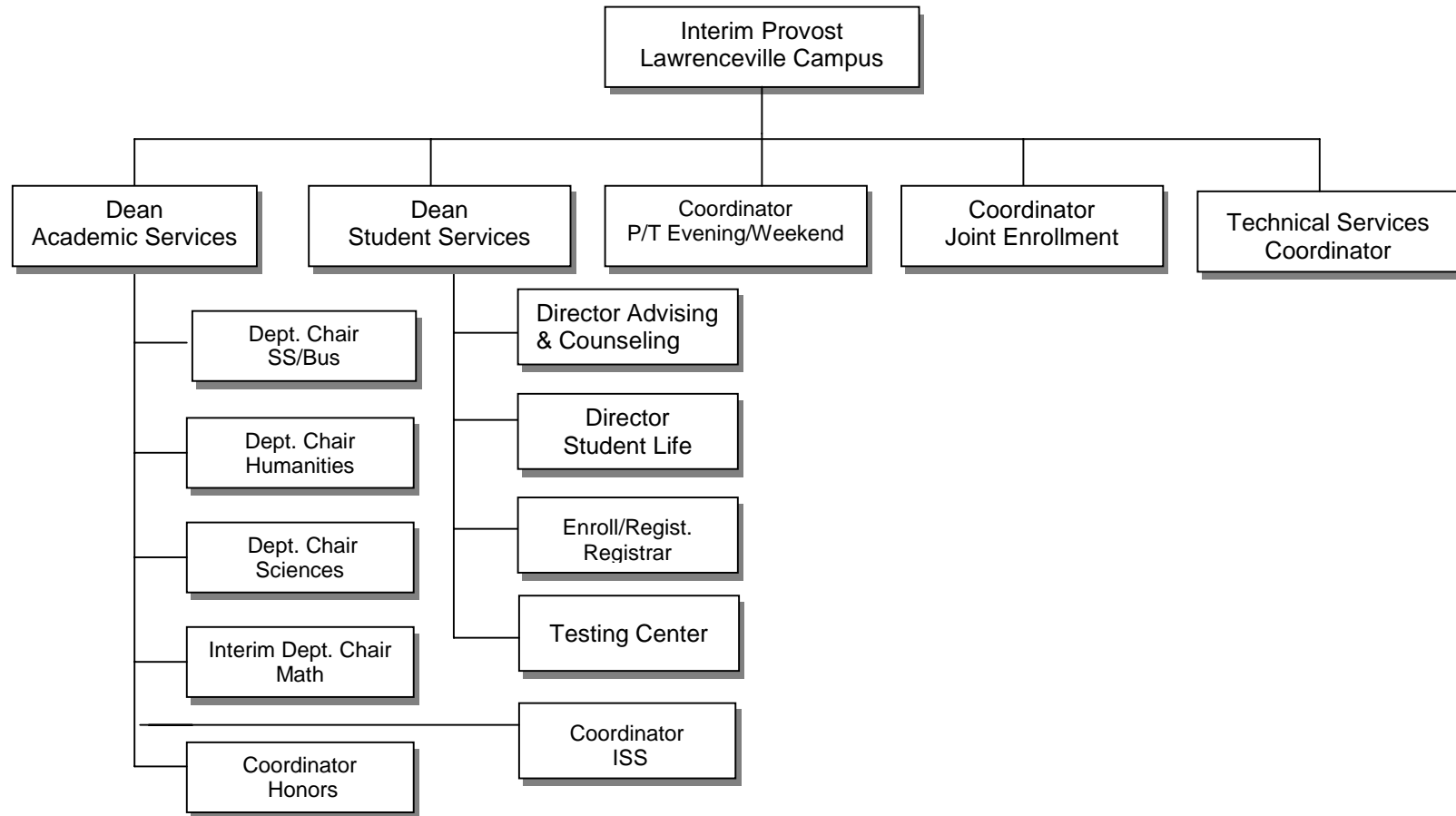


*Includes the appropriate Learning Support Courses

Dunwoody Campus Team FY 2001



Lawrenceville Campus Team FY 2001



Geographic Locations of the GPC Campuses

Alpharetta Center
3705 Brookside Pkwy
Alpharetta, GA 30022

Clarkston Campus
555 North Indian Creek Dr.
Clarkston, GA 30021-2396

Decatur Campus
3251 Panthersville Rd.
Decatur, GA 30034-3897

Dunwoody Campus
2101 Womack Rd.
Dunwoody, GA 30338-4497

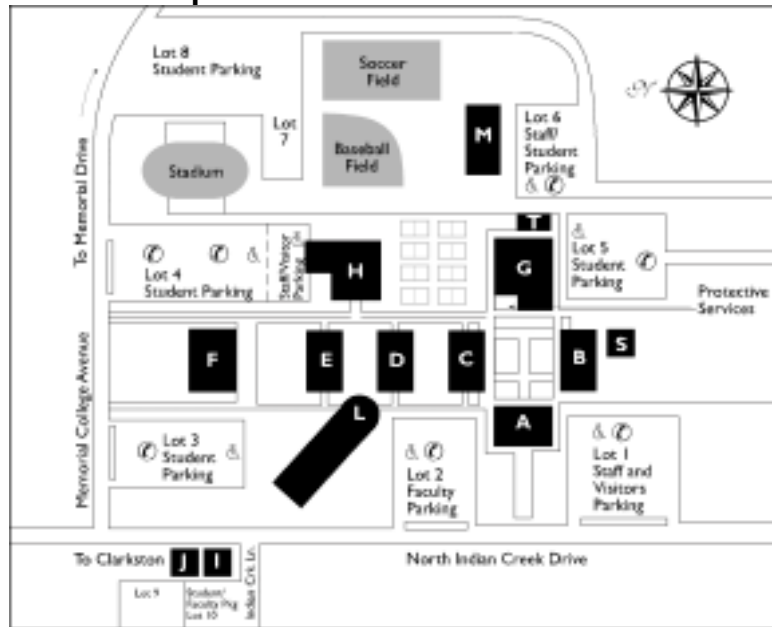
Lawrenceville Campus
5155 Sugarloaf Pkwy
Lawrenceville, GA 30043

Rockdale Center for Higher Education
1115 West Ave.
Conyers, GA 30012



Maps of Clarkston and Decatur Campuses

Clarkston Campus



- A** Administration
- B** Student Center
- C** Science Building
- D** Classroom Building
- E** Humanities
- F** Fine Arts Building
- G** P.E. Building/
Protective Services
- H** Nursing
- L** Jim Cherry Learning
Resource Center
- M** Maintenance
- T** OIT/Student Publications
- S** Auxiliary Services

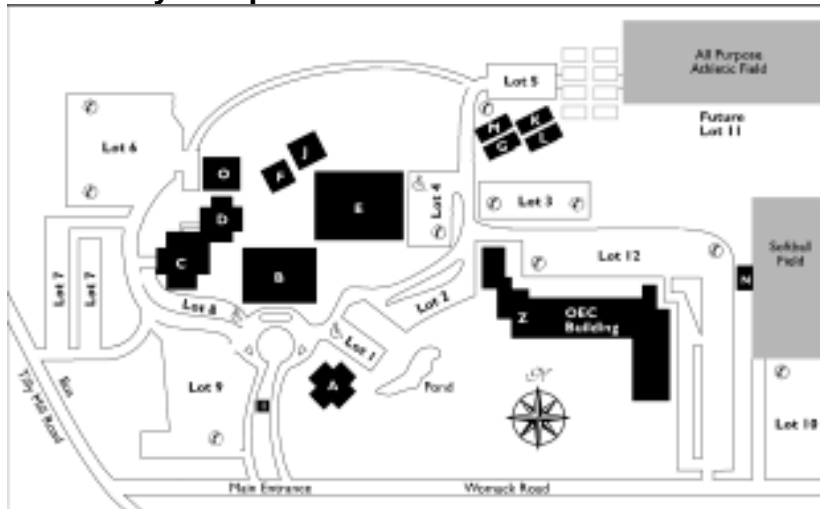
Decatur Campus



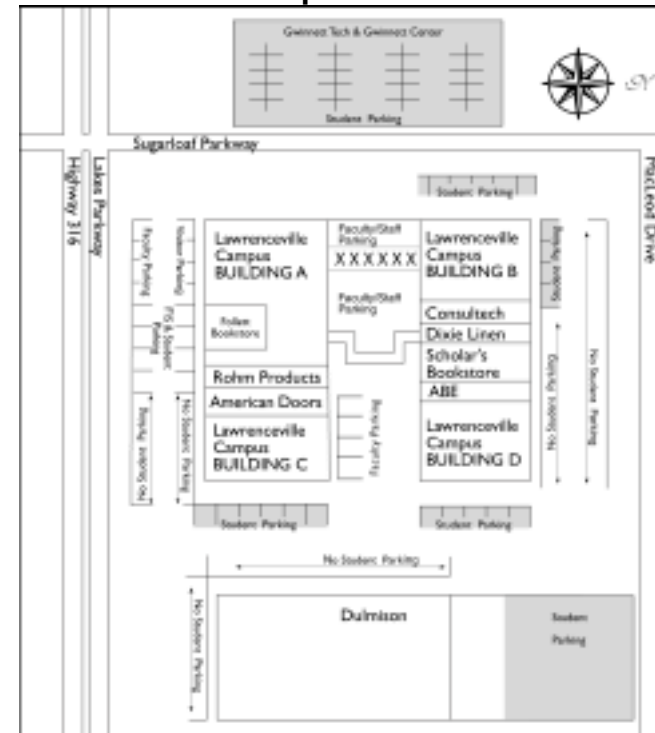
- A** Administration/Library
- B** Classroom Building
- C** Gym/Student Center/
Bookstore
- D** Plant Operations
- E** Academic Greenhouse
- F** Tennis Courts
- G** Protective Services
- H** Modular Classrooms
- I** Modular Classrooms
- J** Modular Classrooms
- K** Modular Classrooms

Maps of Dunwoody and Lawrenceville Campuses

Dunwoody Campus



Lawrenceville Campus



Building Codes for Dunwoody Campus

A Administration/Continuing Education **B** Library/Student Affairs/Registrar/ACCESS Center **C** Science Building/Dental Hygiene Clinic
D Classroom Building **E** Maintenance **F** Shower Facility **G** Developmental Studies **H** Softball Field House **I** Protective Services
J P.E. Building **K** Faculty Offices **L** Faculty Offices **M** Offices **O** Plant Services **Z** OEC Building

Note: 1. Building codes for Lawrenceville are on the Map.

2. Map for Alpharetta Center is not currently available.

Academics

Academic Programs Offered, FY 2001

Accounting (AAS) 2
Anthropology (AA)
Arts (AA)
Arts (AS)
Biology (AA) (M)
Business Administration (AS)
Business and Office Technology (AAS) 1,2
Chemistry (AA) (M)
Commercial Photography (AAS) 2
Computer Information Systems (AAS) 2
Computer Programming (AAS) 1
Computer Science (AS) (M)
Dental Hygiene (Career) (AS)
Dental Assisting (AAS) 2
Drafting (AAS) 2
Electronics Technology (AAS) 1
Engineering (AS) (M)
English (AA)
Environmental Horticulture (AAS) 2
Fire Management (Career) (AAS)
Foreign Language (AA)
General Studies (AS)
Geology (AA) (M)
Health and Physical Education (AS) 3
History (AA)
Hotel, Restaurant & Travel Mgmt (AAS) 2
Industrial Maintenance Technology (AAS) 1
Industrial Technology (AAS) 2
Interiors (AAS) 2
Interpreter Training (Career) (AAS)

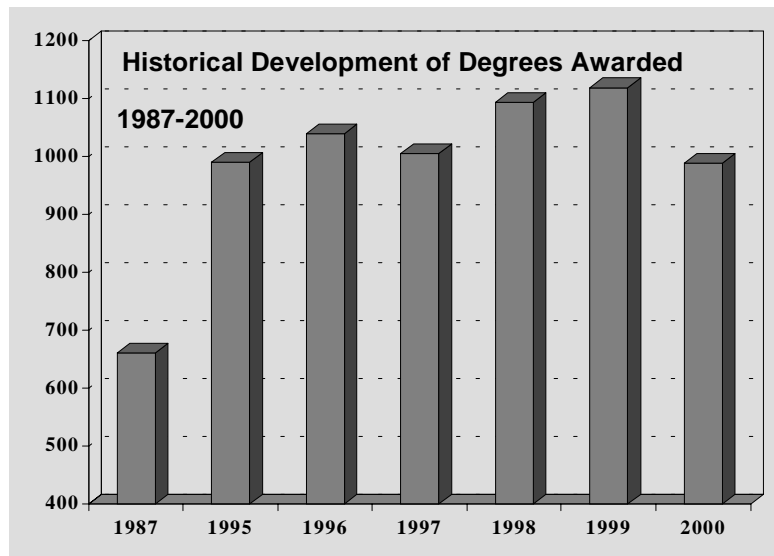
Journalism (AA)
Machine Tool Technology (AAS) 2
Marketing Management (AAS) 1,2
Mathematics (AA) (M)
Medical Assisting (AAS) 1,2
Medical Laboratory Technology (AAS) 1
Microcomputer Specialist (AAS) 1
Music (AS)
Nursing (Career) (AS)
Paramedic Technology (AAS) 2
Philosophy (AA)
Physical Therapist Assistant (AAS) 2
Physics (AA) (M)
Political Science (AA)
Pre-Dentistry/Pre-Medicine/Pre-Pharmacy (AS) (M)
Psychology (AA)
Psychology (AS)
Radiological Technology (AAS) 2
Respiratory Therapy (AAS) 2
Sociology (AA)
Surgical Technology (AAS) 1,2
Teacher Education (AS)
Theatre (AA)

Note: AA= Associate of Arts Degree
AS= Associate of Science Degree
AAS= Associate of Applied Science Degree
M= math-based major
1=Dual Degree program with DeKalb Technical Institute
2=Dual Degree program with Gwinnett Technical Institute
3=Teacher Option Available

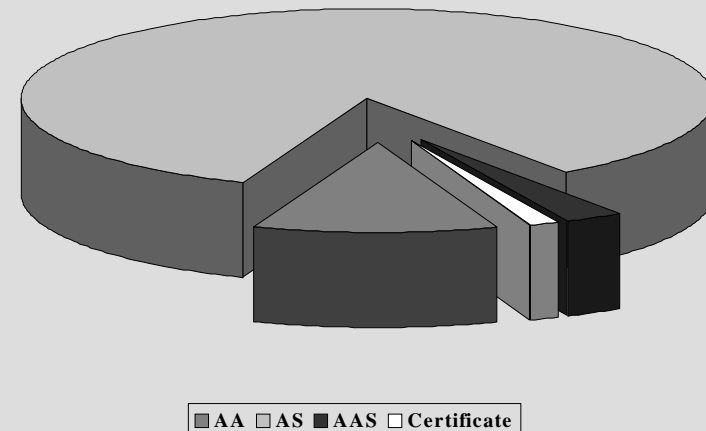
Degrees Awarded Summary, FY 1987-2000

Degrees Awarded by Level and Fiscal Year, GPC, FY 1987-2000

Degree Level	1987	1995	1996	1997	1998	1999	2000
Associate of Arts (Core Curriculum)	127	77	73	89	88	117	99
Associate of Science	303	662	679	699	787	818	727
Associate of Applied Science	82	69	104	52	34	31	25
Certificate		8	3	4	7	12	12
Career Program (Dental Hygiene, Nursing)	149	175	181	161	178	141	126
Total	661	991	1,040	1,005	1,094	1,119	989

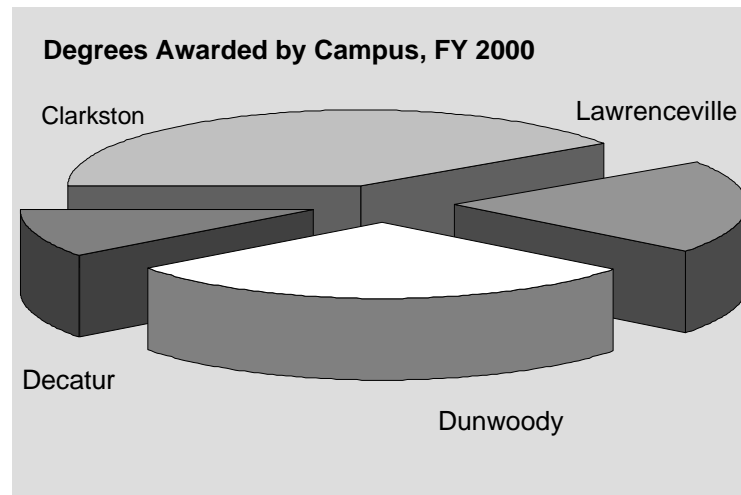


Degrees Awarded by Level, FY 2000



Degrees Awarded by Campus, FY 2000

Degrees Awarded by Campus, 2000		
Campus	Degrees Awarded	
	#	%
Clarkston	400	40.5
Lawrenceville	198	20.0
Dunwoody	290	29.3
Decatur/Rockdale	101	10.2
Total	989	100.0

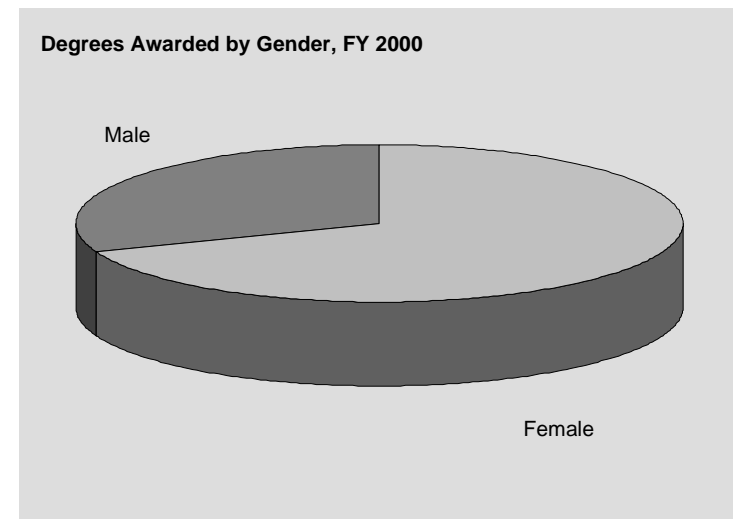
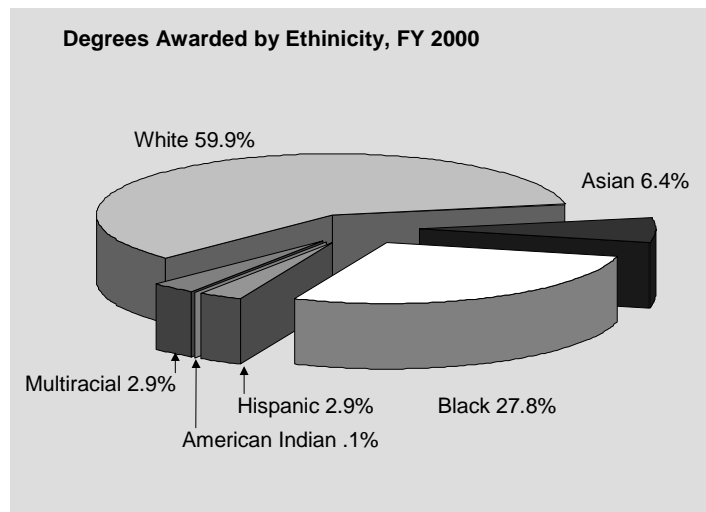


Degrees Awarded by Ethnicity and Gender, FY 2000

Degrees Awarded by Ethnicity and Gender, Georgia Perimeter College, FY 2000

	Female		Male		Total	
	#	%	#	%	#	%
Asian	40	63.5	23	36.5	63	6.4
Black	218	79.3	57	20.7	275	27.8
Hispanic	19	65.5	10	34.5	29	2.9
Multiracial	15	51.7	14	48.3	29	2.9
Native American	1	100.0			1	.1
White	392	66.2	200	33.8	592	59.9
Grand Total Awarded	685	69.3	304	30.7	989	100.0

Note: In each cell, there are two numbers, a number of degrees awarded and its percentage of its class. In the last column, "Total" is the number of degrees awarded of that class, and percentage is its percentage of the grand total degrees awarded presented in the last row.



Degrees Awarded by Major, FY 2000

Degree	Major	#
--------	-------	---

Associate of Arts

AACC	Anthropology	2
AACC	Art	2
AACC	Biology	10
AACC	Chemistry	4
AACC	Drama-Speech	5
AACC	English	10
AACC	Foreign Language	19
AACC	History	5
AACC	Journalism	15
AACC	Mathematics	3
AACC	Philosophy	3
AACC	Physics	1
AACC	Political Science	5
AACC	Psychology	10
AACC	Sociology	5

Total		99
--------------	--	-----------

Certificate	Major	#
-------------	-------	---

CER 1	Interpreter Trng.	12
-------	-------------------	----

Total		12
--------------	--	-----------

Degree	Major	#
--------	-------	---

Associate of Science

ASCC	Agri. Engineering	1
ASCC	Art	5
ASCC	Business Administration	398
ASCC	Business Education	6
ASCC	Computer Science	28
ASCC	Engineering	3
ASCC	General Studies	95
ASCC	Health & Physical Education	3
ASCC	Music	2
ASCC	Pre-dental	2
ASCC	Pre-medicine	6
ASCC	Pre-pharmacy	3
ASCC	Psychology	59
ASCC	Teacher Education	106
ASCC	Urban Life	10

Total		727
--------------	--	------------

Degree	Major	#
--------	-------	---

Associate of Applied Science

AASHC	Dental Assisting	1
AASTC	Drafting	2
AASFST	Fire Science Tech.	1
ASCC	Fire Mgmt. Tech.	1
AASBA	Hotel, Restaurant, & Travel Mgmt.	1
AASBA	Information & Office Technology	3
AASIT	Interpreter Training	4
AASBA	Marketing Mgmt.	1
AASHC	Medical Assisting	3
AASHC	Medical Laboratory Technician	3
AASBA	Microcomputer	4
AASHC	Surgical Technician	1

Total		25
--------------	--	-----------

Career Program

ASDH	Dental Hygiene	21
ASN	Nursing	105

Total		126
--------------	--	------------

Course Profiles, FY 1998

Instructional Program Area	Number of Courses Taught	Number of Sections Taught	Average Section Size	QCH Produced #	%
Allied Health & Health Sciences	47	56	35	10,888	2.06%
Basic Skills	19	1,027	19	94,918	17.92%
Business/Management/Office	8	395	21	42,260	7.98%
Communications	5	15	16	900	0.17%
Computer & Information Science	6	53	16	4,265	0.81%
Education	16	93	12	5,312	1.00%
Engineering	3	8	11	405	0.08%
Foreign Languages	52	297	13	19,325	3.65%
Leisure & Recreational Activity	40	405	19	18,522	3.50%
Letters	17	757	18	69,780	13.17%
Liberal/General Studies	9	288	19	27,045	5.10%
Life Sciences	18	414	21	26,269	4.96%
Mathematics	16	554	24	65,282	12.32%
Personal Awareness	1	56	6	2,931	0.55%
Physical Sciences	36	512	22	34,146	6.45%
Protective Services	1	2	5	45	0.01%
Social Sciences	32	771	25	95,530	18.03%
Visual & Performing Arts	125	364	14	11,957	2.26%
Total	451	6,067	20	529,780	100.00%

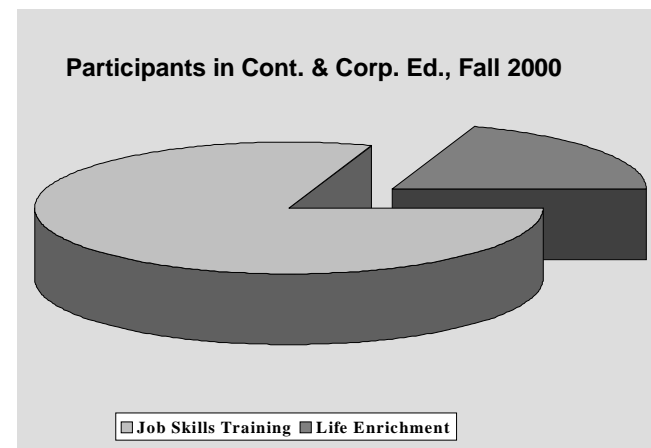
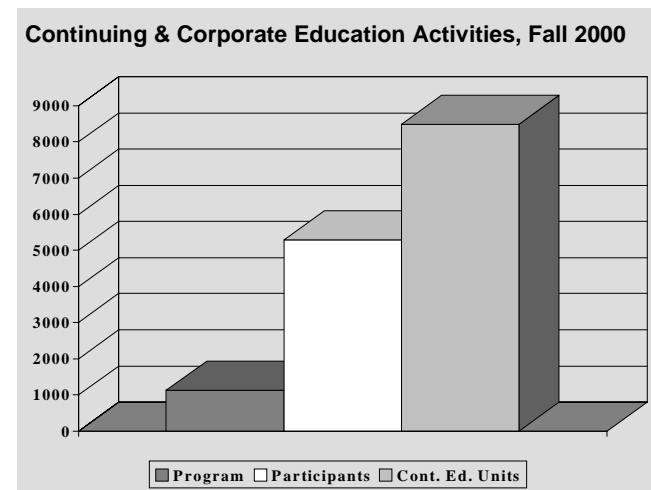
Source: Board of Regents, *USG Facilities, Curriculum, and Room Use Reporting*

Note: FY 1999 and FY 2000 data not available at present time

Continuing and Corporate Education, Fall 1996-2000

Category	1996	1997	1998	1999	2000
PROGRAMS					
Job Skills Trng.	989	911	1,181	906	932
Life Enrichment	298	263	219	112	205
Public Service*	119				
Total	1,406	1,174	1,400	1,018	1,137
Participants					
Job Skills Trng.	6,837	5,899	5,483	5,065	4,248
Life Enrichment	3,057	2,081	1,349	902	1,042
Public Service*	9,560				
Total	19,454	7,980	6,832	5,967	5,290
Continuing Education Units (CEU)					
Job Skills Trng.	11,920	11,836	10,216	8,959	7,451
Life Enrichment	2,897	1,813	1,804	906	1,029
Public Service**					
Total	14,817	13,649	12,020	9,865	8,480
EFT	247	227	200	164	141

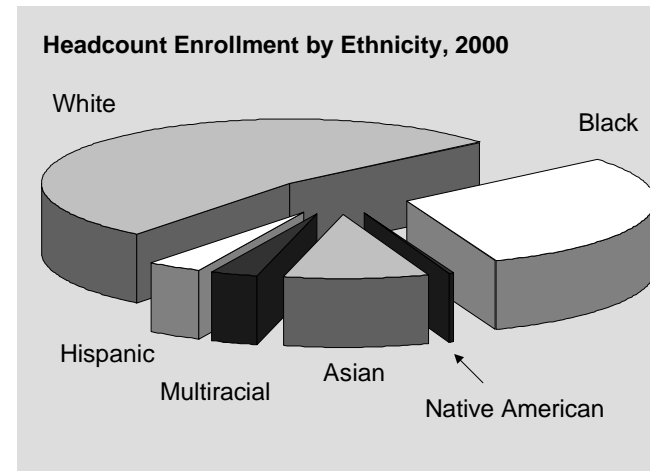
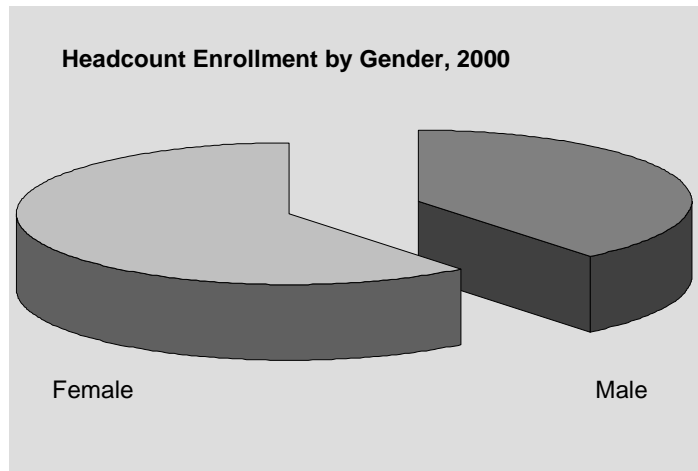
Note: * Public Service numbers no longer reported since 97.
 ** Public Service CEU no longer reported since 95.



Students

Enrollment Summary I - GPC All Campuses, Fall 1986/95-00

On-Campus Student Enrollment								
	1986	1995	1996	1997	1998	1999	2000	
Total Headcount	8,786	16,073	15,690	15,468	14,085	14,091	13,708	
Full-Time	35%	35%	38%	40%	35%	39%	40%	
Part-Time	65%	65%	62%	60%	65%	61%	60%	
Equivalent Full-Time	5,777	10,632	10,653	10,680	8,219	8,253	8,439	
On-Campus Student Demographics								
Headcount by Gender:	Male	3,995	6,248	6,118	6,083	5,533	5,606	5,364
	Female	4,791	9,825	9,572	9,385	8,552	8,485	8,344
Headcount by Ethnicity:	Asian	266	1,016	1,056	1,041	1,049	1,190	1,296
	Black	1,522	4,792	4,848	4,823	4,372	4,376	4,142
	Hispanic	129	389	412	424	389	480	480
	Multiracial			172	272	302	367	438
	Native American	25	49	40	41	30	40	39
	White	6,844	9,827	9,162	8,867	7,943	7,638	7,313
Others:	Senior Citizens	12	11	18	14	16	20	18
	Non-U.S.	152	1,828	1,943	1,924	1,881	2,079	2,102
	Average Age	24.3	25.3	25.4	25.4	25.0	24.3	24.1
	Median Age		23	23	23	22	22	21

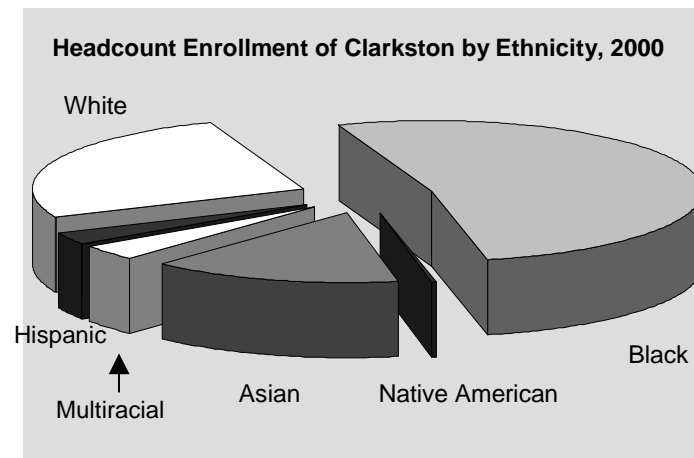
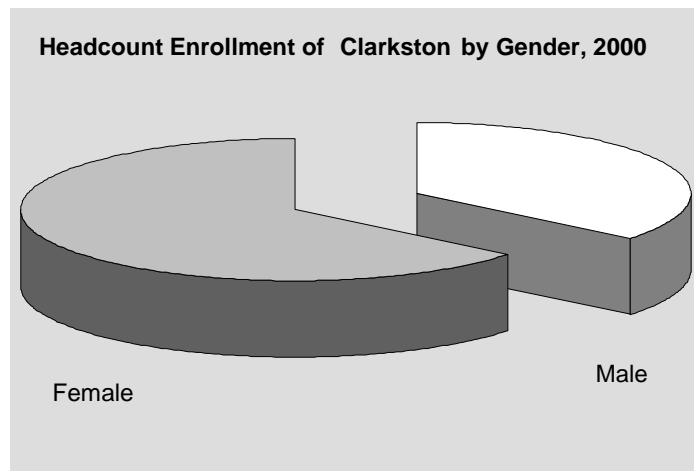


Enrollment Summary II - GPC All Campuses, Fall 1986/95-00

On-Campus Enrollment by Schedule							
	1986	1995	1996	1997	1998	1999	2000
Day		10,740	10,991	10,769	10,325	11,488	11,330
Evening		6,967	6,639	6,656	6,345	6,699	6,577
Weekend		615	658	762	951	2,187	1,983
On-Campus Enrollment by Classification							
Learning Support/Developmental Studies	2,250	4,008	4,113	3,928	3,270	3,476	3,298
Joint Enrollment	402	590	580	803	876	905	915
Freshman	3,988	5,172	5,540	5,099	4,837	4,939	5,012
Sophomore	1,825	5,574	5,118	5,212	4,715	4,342	4,078
Transient	166	309	263	283	202	241	229
Unclassified	155	420	1	143	185	188	176
On-Campus New Student Enrollment by Classification							
Learning Support/Developmental Studies	1,124	1,904	1,849	1,813	1,633	1,793	1,731
Joint Enrollment	394	574	540	782	861	884	874
Freshman	246	574	982	653	720	822	880
Transfer	441	957	826	743	702	775	778
Transient	96	137	130	113	84	111	89
Unclassified	46	158	0	118	73	105	73
Total	2,347	4,304	4,327	4,222	4,073	4,490	4,425
On-Campus Students Needing Learning Support							
Math			3,413	3,263	2,815	2,723	2,680
English			1,205	1,156	970	1,101	1,055
Reading			919	815	781	894	881
Unduplicated Head Count			4,113	3,928	3,270	3,476	3,298
On-Campus Student Enrollment by Residence							
Georgia	8,596	15,032	14,697	14,531	13,304	13,261	12,706
Out-of-State	190	944	903	845	667	731	894
Non-Resident Tuition Waived		97	90	92	114	99	108

Enrollment of GPC Clarkston, Fall 1986/95-00

On-Campus Student Enrollment								
	1986	1995	1996	1997	1998	1999	2000	
Total Headcount	4,820	6,645	6,025	5,615	5,045	4,933	4,498	
Full-Time		38%	41%	41%	36%	39%	42%	
Part-Time		62%	59%	59%	64%	61%	58%	
Equivalent Full-Time	3,256	4,141	3,898	3,680	2,781	2,588	2,937	
On-Campus Student Demographics								
Headcount by Gender:	Male	2,183	2,483	2,248	2,077	1,778	1,786	1,618
	Female	2,637	4,162	3,777	3,538	3,267	3,147	2,880
Headcount by Ethnicity:	Asian	229	750	747	673	621	660	673
	Black	984	2,973	2,915	2,829	2,677	2,599	2,354
	Hispanic	84	166	147	139	124	133	133
	Multiracial			67	110	135	151	154
	Native American	15	18	14	15	9	14	12
	White	3,508	2,738	2,135	1,849	1,479	1,376	1,172
Others:	Senior Citizens	11	7	10	6	8	10	7
	Non-U.S.	134	1,310	1,330	1,209	1,178	1,199	1,170
	Average Age		26.4	26.4	27.0	26.2	25.9	25.5
	Median Age		24	24	24	24	23	23



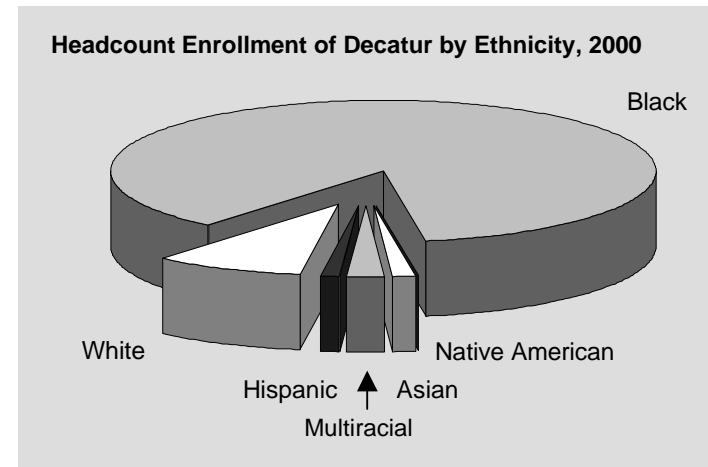
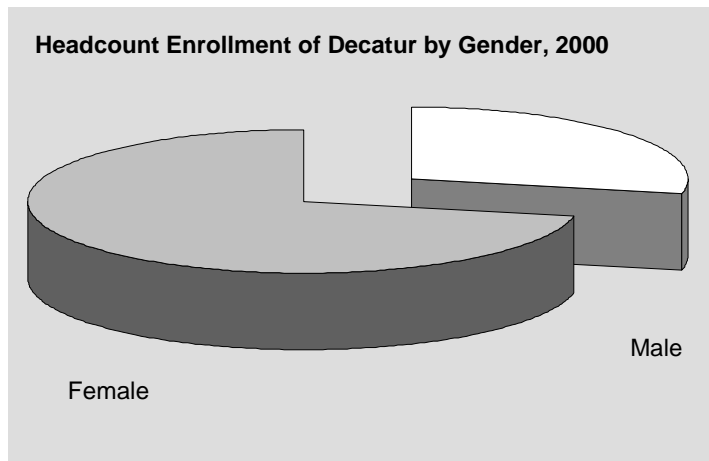
Enrollment of GPC Clarkston (Continued), Fall 1986/95-00

On-Campus Enrollment by Schedule							
	1986	1995	1996	1997	1998	1999	2000
Day		4,633	4,636	4,253	3,954	4,024	3,891
Evening		2,484	2,235	2,161	2,124	2,092	2,139
Weekend		342	392	359	474	844	805
On-Campus Enrollment by Classification							
Learning Support/Developmental Studies	1,513	1,603	1,573	1,376	1,188	1,244	1,127
Joint Enrollment	95	61	51	47	54	53	30
Freshman	1,746	2,021	2,044	1,711	1,539	1,557	1,540
Sophomore	1,317	2,609	2,259	2,302	2,105	1,945	1,677
Transient	67	128	92	114	76	72	61
Unclassified	82	223	0	65	83	62	63
On-Campus New Student Enrollment by Classification							
Learning Support/Developmental Studies	642	683	633	583	534	600	563
Joint Enrollment	85	57	48	42	52	48	28
Freshman	143	193	316	167	192	211	235
Transfer	192	394	293	230	247	267	234
Transient	36	59	49	45	32	32	29
Unclassified	21	75	0	55	29	29	24
Total	1,119	1,461	1,339	1,122	1,086	1,187	1,113
On-Campus Students Needing Learning Support							
Math			1,297	1,142	1,032	1,059	947
English			459	400	361	362	331
Reading			361	304	305	292	266
Unduplicated Head Count			1,573	1,376	1,188	1,244	1,127
On-Campus Student Enrollment by Residence							
Georgia	4,898	6,058	5,474	5,140	4,645	4,531	4,026
Out-of-State	222	537	504	417	336	343	417
Non-Resident Tuition Waived		50	47	58	64	59	55

Enrollment of GPC Decatur, Fall 1986/95-00

On-Campus Student Enrollment							
	1986	1995	1996	1997	1998	1999	2000
Total Headcount	723	1,531	1,380	1,274	1,148	1,274	1,137
Full-Time		34%	34%	38%	30%	32%	33%
Part-Time		66%	66%	62%	70%	68%	67%
Equivalent Full-Time	407	843	797	750	538	547	668

On-Campus Student Demographics								
Headcount by Gender:	Male	257	518	381	376	335	364	323
	Female	466	1,013	999	898	813	910	814
Headcount by Ethnicity:	Asian	5	21	18	27	27	20	16
	Black	483	1,267	1,216	1,115	1,007	1,085	981
	Hispanic	7	8	8	13	6	17	13
	Multiracial			7	19	17	25	25
	Native American	0	3	6	0	2	3	1
	White	228	232	125	100	89	124	101
Others:	Senior Citizens	0	0	0	0	2	2	2
	Non-U.S.	5	92	89	83	78	76	55
	Average Age		27.0	26.7	27.1	26.5	26.0	25.5
	Median Age		24	24	24	23	23	22



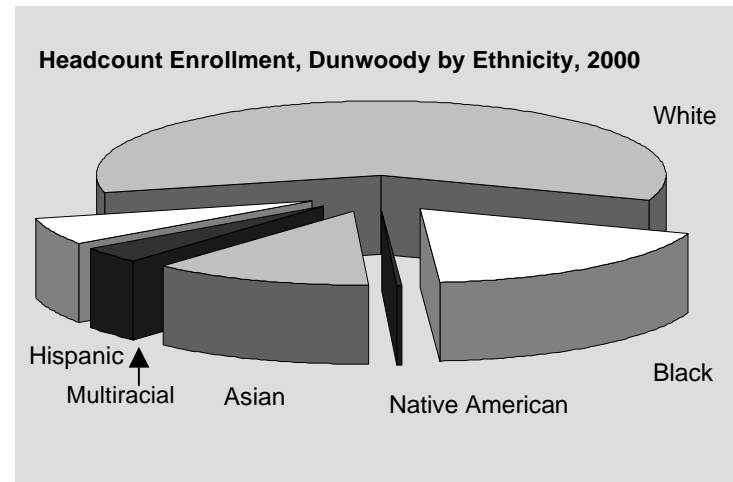
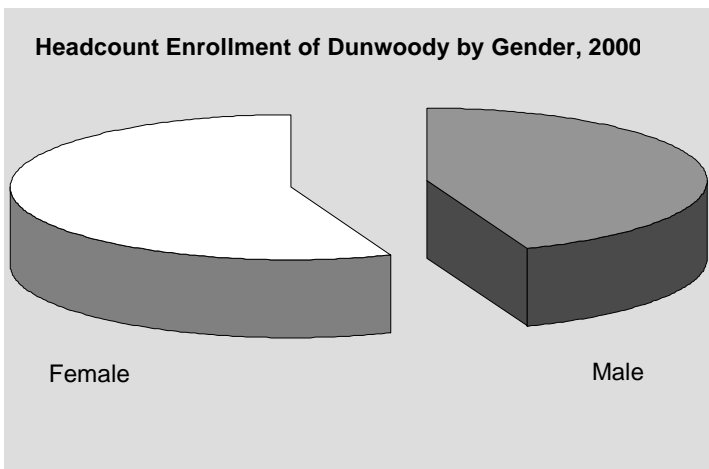
Enrollment of GPC Decatur (Continued), Fall 1986/95-00

On-Campus Enrollment by Schedule							
	1986	1995	1996	1997	1998	1999	2000
Day		966	913	839	891	955	943
Evening		558	581	514	398	551	543
Weekend		0	0	5	47	108	184
On-Campus Enrollment by Classification							
Learning Support/Developmental Studies	303	472	472	441	382	517	440
Joint Enrollment	16	1	4	11	7	4	8
Freshman	205	446	426	352	342	352	344
Sophomore	171	563	459	448	393	372	320
Transient	11	23	18	15	13	13	18
Unclassified	17	26	0	7	11	16	7
On-Campus New Student Enrollment by Classification							
Learning Support/Developmental Studies	89	197	173	169	179	246	211
Joint Enrollment	16	1	4	8	7	4	8
Freshman	3	11	46	16	14	36	30
Transfer	41	62	57	40	42	58	50
Transient	7	11	5	4	6	8	9
Unclassified	4	7	0	5	2	12	3
Total	160	289	285	242	250	364	311
On-Campus Students Needing Learning Support							
Math			336	363	316	410	342
English			197	144	133	188	165
Reading			175	112	121	175	160
Unduplicated Head Count			472	441	382	517	440
On-Campus Student Enrollment by Residence							
Georgia	708	1,466	1,342	1,233	1,179	1,235	1,101
Out-of-State	15	57	36	39	25	31	31
Non-Resident Tuition Waived		8	2	2	4	8	5

Enrollment of GPC Dunwoody, Fall 1986/95-00

On-Campus Student Enrollment								
	1986	1995	1996	1997	1998	1999	2000	
Total Headcount	3,308	5,600	5,038	5,142	4,620	4,797	4,671	145
Full-Time		35%	39%	43%	37%	43%	44%	53%
Part-Time		65%	61%	57%	63%	57%	56%	47%
Equivalent Full-Time	2,114	3,473	3,282	3,449	2,569	2,600	3,058	100
On-Campus Student Demographics								
Headcount by Gender:								
Male	1,579	2,366	2,215	2,298	2,076	2,118	2,069	75
Female	1,729	3,234	2,823	2,844	2,544	2,679	2,602	70
Headcount by Ethnicity:								
Asian	34	256	262	325	350	498	589	12
Black	87	706	642	787	733	868	852	7
Hispanic	39	167	186	204	201	267	271	3
Multiracial			56	93	108	153	163	7
Native American	11	25	17	17	14	18	15	1
White	3,137	4,446	3,875	3,716	3,214	2,993	2,781	115
Others:								
Senior Citizens	1	4	5	6	6	6	8	0
Non-U.S.	17	382	496	665	635	872	974	12
Average Age		24.7	25.0	25.3	24.5	24.1	24.1	20.1
Median Age		23	23	23	22	22	22	19

Note: For the year 2000, there are two numbers for each category. The first one is for Dunwoody and the second Alpharetta. The two charts are for Dunwoody only.



Enrollment of GPC Dunwoody (Continued), Fall 1986/95-00

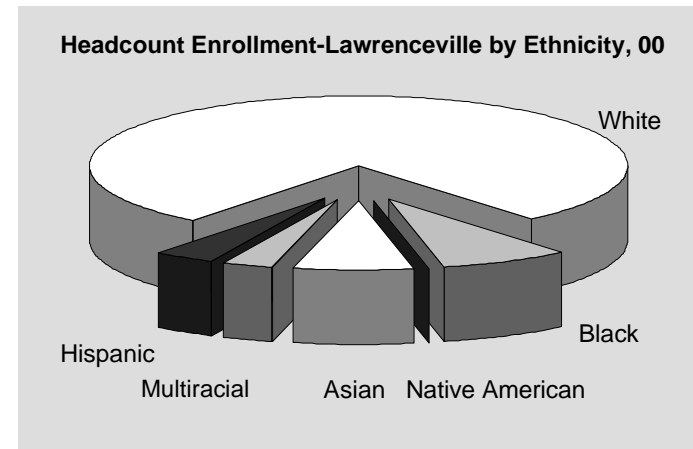
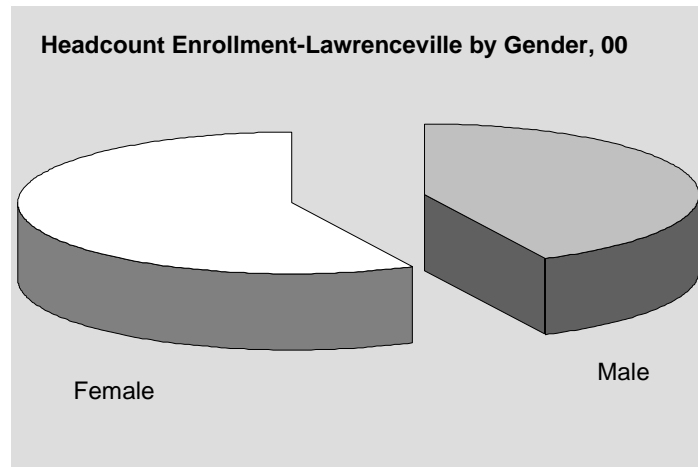
On-Campus Enrollment by Schedule								
	1986	1995	1996	1997	1998	1999	2000	
Day		3,405	3,565	3,585	3,387	3,768	3,908	145
Evening		2,549	2,472	2,417	2,259	2,402	2,574	42
Weekend		273	286	314	299	713	823	13
On-Campus Enrollment by Classification								
Learning Support/Developmental Studies	860	1,168	1,238	1,245	1,006	1,033	1,016	20
Joint Enrollment	299	342	127	158	161	137	127	43
Freshman	1,304	1,740	1,802	1,745	1,661	1,797	1,811	54
Sophomore	707	2,076	1,757	1,824	1,640	1,626	1,551	27
Transient	90	121	104	110	84	109	88	1
Unclassified	48	153	0	60	68	95	78	0
On-Campus New Student Enrollment by Classification								
Learning Support/Developmental Studies	405	564	577	573	468	518	502	15
Joint Enrollment	294	333	109	153	154	129	105	41
Freshman	80	170	280	180	201	293	287	24
Transfer	210	355	292	301	268	310	308	4
Transient	55	50	51	45	35	49	32	0
Unclassified	18	64	0	49	32	55	37	0
Total	1,062	1,536	1,309	1,301	1,158	1,354	1,271	84
On-Campus Students Needing Learning Support								
Math			1,051	1,067	883	871	847	15
English			319	323	248	308	284	6
Reading			222	209	178	231	261	4
Unduplicated Head Count			1,238	1,245	1,006	1,033	1,016	20
On-Campus Student Enrollment by Residence								
Georgia	3,179	5,235	4,706	4,755	4,288	4,361	4,101	133
Out-of-State	109	328	304	356	284	381	495	11
Non-Resident Tuition Waived		37	28	31	48	55	75	1

Note: In each cell of the year 2000, there are two numbers. The first one is for Dunwoody and the second Alpharetta.

Enrollment of GPC Lawrenceville, Fall 1987/95-00

On-Campus Student Enrollment							
	1987	1995	1996	1997	1998	1999	2000
Total Headcount	294	2,729	2,781	2,956	2,877	3,252	3,279
Full-Time		41%	45%	48%	46%	49%	50%
Part-Time		59%	55%	52%	54%	51%	50%
Equivalent Full-Time	156	1,781	1,885	2,022	1,720	1,828	2,196

On-Campus Student Demographics								
Headcount by Gender:	Male	96	1,105	1,143	1,250	1,240	1,436	1,406
	Female	198	1,624	1,638	1,706	1,637	1,816	1,816
Headcount by Ethnicity:	Asian	3	73	83	105	124	173	233
	Black	2	153	151	214	179	253	251
	Hispanic	0	74	77	77	71	120	118
	Multiracial			26	42	51	62	102
	Native American	2	6	4	11	3	11	8
	White	287	2,423	2,440	2,507	2,449	2,633	2,567
Others:	Senior Citizens	0	0	1	1	0	1	0
	Non-U.S.	0	108	133	145	165	243	287
	Average Age	26.5	23.8	23.4	24.1	22.8	22.9	22.6
	Median Age		21	21	23	20	20	20



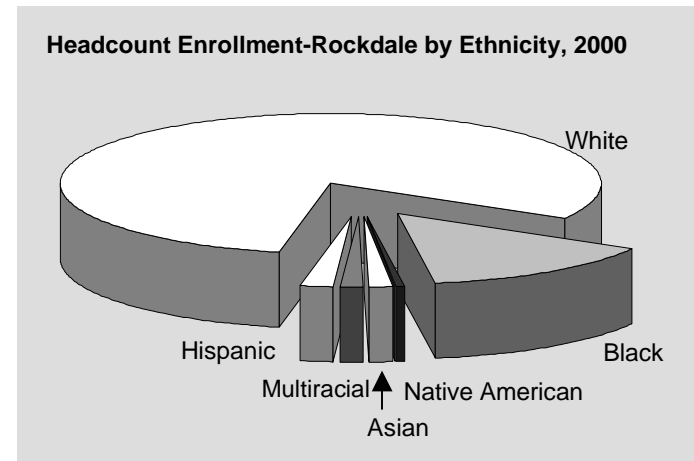
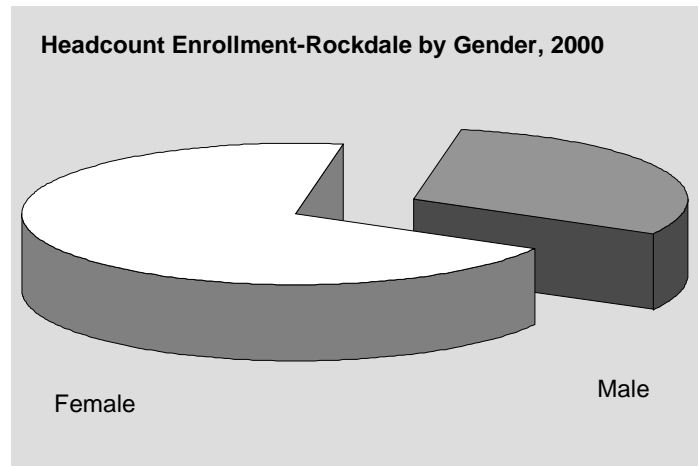
Enrollment of GPC Lawrenceville (Continued), Fall 1987/95-00

On-Campus Enrollment by Schedule							
	1987	1995	1996	1997	1998	1999	2000
Day		1812	1919	2069	2189	2,643	2,575
Evening		1192	1212	1343	1300	1,617	1,823
Weekend		0	0	84	132	506	546
On-Campus Enrollment by Classification							
Learning Support/Developmental Studies	117	687	687	675	626	711	769
Joint Enrollment	6	106	94	112	124	146	107
Freshman	136	1,040	1,151	1,207	1,255	1,401	1,368
Sophomore	22	811	817	914	818	929	965
Transient	8	49	31	38	34	45	45
Unclassified	5	36	0	10	20	20	25
On-Campus New Student Enrollment by Classification							
Learning Support/Developmental Studies	91	397	386	390	398	435	459
Joint Enrollment	6	104	83	107	118	142	97
Freshman	29	193	287	257	300	296	329
Transfer	56	159	159	162	149	197	188
Transient	7	20	12	13	14	15	12
Unclassified	4	16	0	8	8	9	8
Total	193	889	927	937	987	1,094	1,093
On-Campus Students Needing Learning Support							
Math			594	539	521	555	577
English			203	236	228	259	297
Reading			142	153	167	207	222
Unduplicated Head Count			687	675	626	711	769
On-Campus Student Enrollment by Residence							
Georgia	290	2,625	2,686	2,857	2,791	3,164	3,186
Out-of-State	4	90	81	88	74	78	83
Non-Resident Tuition Waived		14	14	11	12	10	10

Enrollment of GPC Rockdale, Fall 1989/95-00

On-Campus Student Enrollment							
	1989	1995	1996	1997	1998	1999	2000
Total Headcount	165	692	640	689	689	757	817
Full-Time		29%	33%	38%	36%	39%	40%
Part-Time		71%	67%	62%	64%	61%	60%
Equivalent Full-Time	71	394	369	422	356	354	501

On-Campus Student Demographics								
Headcount by Gender:	Male	51	221	239	249	245	276	247
	Female	114	471	401	440	444	481	570
Headcount by Ethnicity:	Asian	0	6	4	4	11	11	13
	Black	6	73	64	58	76	116	119
	Hispanic	0	10	11	6	6	13	15
	Multiracial			2	10	5	9	11
	Native American	0	2	1	1	3	3	3
	White	159	601	558	610	588	605	656
Others:	Senior Citizens	1	1	0	1	0	1	1
	Non-U.S.	0	10	14	12	17	30	19
	Average Age	28.8	25.3	25.8	25.3	24.9	24.7	24.7
	Median Age		21	22	23	22	21	21



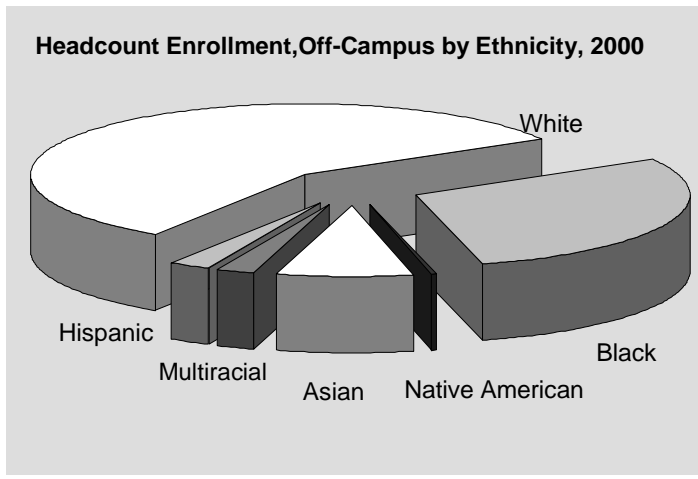
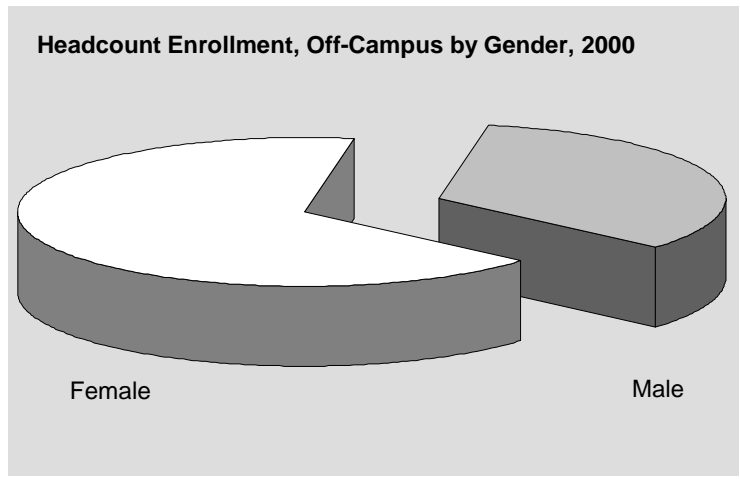
Enrollment of GPC Rockdale (Continued), Fall 1989/95-00

On-Campus Enrollment by Schedule							
	1989	1995	1996	1997	1998	1999	2000
Day	0	348	368	427	422	517	602
Evening	165	330	367	357	420	439	545
Weekend	0	0	0	0	0	16	54
On-Campus Enrollment by Classification							
Learning Support/Developmental Studies	38	204	205	207	176	193	213
Joint Enrollment	0	83	15	22	15	13	8
Freshman	89	245	255	264	267	314	350
Sophomore	26	142	156	188	223	231	231
Transient	2	11	9	7	5	4	10
Unclassified	10	7	0	1	3	2	5
On-Campus New Student Enrollment by Classification							
Learning Support/Developmental Studies	22	115	110	112	100	105	125
Joint Enrollment	0	80	15	21	15	13	7
Freshman	8	22	37	43	42	47	61
Transfer	12	34	30	35	33	31	47
Transient	1	3	5	2	1	3	5
Unclassified	3	1	0	1	2	1	2
Total	46	255	197	214	193	200	247
On-Campus Students Needing Learning Support							
Math			185	172	151	163	163
English			45	49	30	47	68
Reading			31	36	37	36	54
Unduplicated Head Count			205	207	176	193	213
On-Campus Student Enrollment by Residence							
Georgia	164	685	635	683	684	743	801
Out-of-State	1	6	3	4	3	14	15
Non-Resident Tuition Waived		1	2	2	2	0	1

Enrollment of GPC Off-Campus/Distance Ed., Fall 96-00

Off-Campus/Distance Education Student Enrollment					
	1996	1997	1998	1999	2000
Total Headcount	713	915	1,031	1,517	1,376
Full-Time	24%	23%	19%	41%	44%
Part-Time	76%	77%	81%	59%	56%
Equivalent Full-Time	281	357	255	337	909

Off-Campus/Distance Education Student Demographics						
Headcount by Gender:	Male	225	269	326	554	462
	Female	488	646	705	963	914
Headcount by Ethnicity:	Asian	22	36	53	96	111
	Black	150	207	206	302	407
	Hispanic	8	16	14	23	33
	Multiracial	15	13	13	27	31
	Native American	1	3	0	2	3
	White	517	640	727	1,067	791
Others:	Senior Citizens	0	0	0	1	0
	Non-U.S.	22	41	53	122	151
	Average Age	24.6	24	22.6	23.3	26.3
	Median Age	21	22	18	20	24



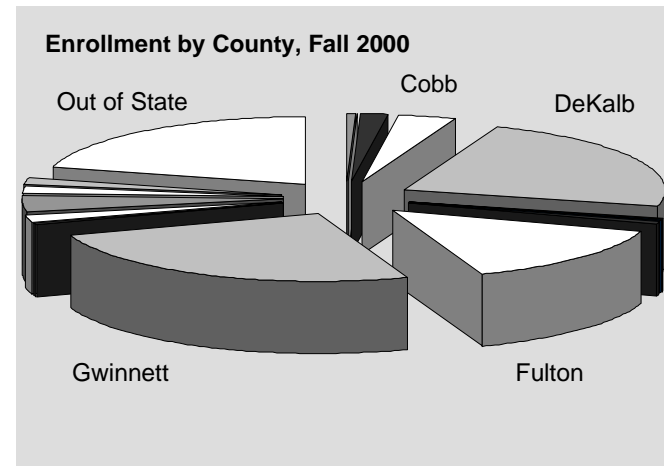
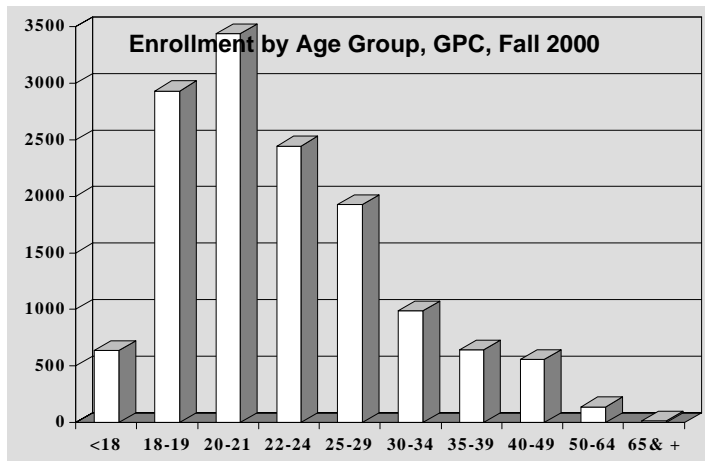
Enrollment of GPC Off-Campus/Distance Ed. (Continued), Fall 96-00

Off-Campus/Distance Education Enrollment by Schedule					
	1996	1997	1998	1999	2000
Day	36	0	0		966
Evening	0	0	25		711
Weekend	0	0	0		292
Off-Campus/Distance Education Enrollment by Classification					
Learning Support/Developmental Studies	33	42	59	106	149
Joint Enrollment	303	467	543	585	14
Freshman	153	131	158	309	479
Sophomore	205	251	253	462	674
Transient	19	16	12	37	39
Unclassified	0	3	6	18	21
Off-Campus/Distance Education New Student Enrollment by Classification					
Learning Support/Developmental Studies	7	7	16	39	60
Joint Enrollment	292	467	542	581	11
Freshman	14	6	9	25	38
Transfer	25	24	21	41	91
Transient	10	8	6	19	19
Unclassified	0	2	2	9	5
Total	348	514	596	714	224
Off-Campus/Distance Education Students Needing Learning Support					
Math	31	40	57	97	126
English	4	2	6	8	20
Reading	2	1	0	9	16
Unduplicated Head Count	33	42	59	106	149
Off-Campus/Distance Education Student Enrollment by Residence					
Georgia	694	893	1,007	1,461	1,280
Out-of-State	17	20	20	52	84
Non-Resident Tuition Waived	2	2	4	4	12

Enrollment by Age Group, Fall 1996-00; and by County, Fall 2000

Enrollment by Age Group, Fall 1996 to 2000					
	1996	1997	1998	1999	2000
Under 18	373	885	585	604	633
18-19	2,526	1,112	2,763	3,024	2,934
20-21	3,350	3,655	3,057	3,249	3,436
22-24	3,149	3,323	2,645	2,569	2,445
25-29	2,740	3,083	2,302	2,098	1,927
30-34	1,580	1,547	1,223	1,107	988
35-39	948	853	673	657	642
40-49	835	822	685	625	555
50-64	149	172	140	141	137
65 & +	15	16	12	17	11
Total	15,665	15,468	14,085	14,091	13,708

Enrollment by County, Fall 2000		
County	Enrollment	Percent
Cherokee	59	.4
Clarke	33	.2
Clayton	194	1.4
Cobb	518	3.8
DeKalb	3,169	23.1
Douglas	31	.2
Fayette	33	.2
Forsyth	84	.6
Fulton	1,986	14.5
Gwinnett	3,461	25.3
Henry	82	.6
Newton	222	1.6
Rockdale	523	3.8
Walton	222	1.6
Others in State	252	1.8
Out of State	2,839	20.7
Total	13,708	100.0



High Schools Attended by 100 or More Students, Fall 1999-00

High School	Total Fall Enrollment		New Student Enrollment		Enrollment of New HS Grads	
	1999	2000	1999	2000	1999	2000
DeKalb Clarkston	110	121	21	36	12	27
Columbia	100	77	24	17	13	9
Cross Keys	115	120	33	33	23	21
Dunwoody	204	188	94	65	31	17
Lakeside	118	126	49	47	20	26
Lithonia	106	102	28	25	12	15
McNair		100		18		5
Open Campus	192	168	53	35	23	15
Redan	214	180	65	28	34	17
Salem High School	124	125	56	48	13	15
Southwest DeKalb	141	137	37	34	13	14
Stone Mountain	121	129	30	24	13	19
Tucker	146	130	53	40	29	25
Fulton Chattahoochee/Crestwood	299	276	166	162	21	21
Independence Alternative	126	104	32	22	10	6
Milton	180	170	95	68	19	17
North Springs	107	138	49	69	9	11
Roswell	177	153	114	96	9	13
Gwinnett Berkmar	260	236	79	46	58	37
Brookwood	346	369	139	132	70	69
Centennial		159		123		25
Central Gwinnett	217	225	65	57	42	39
Collins Hill	263	267	107	100	59	72
Dacula	106	112	43	49	28	37
Duluth	240	222	108	84	33	42
Meadowcreek	225	243	57	49	43	35
Norcross	189	175	52	37	30	17
Parkview	254	251	99	62	52	44
Phoenix (Open Campus)	174	203	55	61	30	22
Shiloh	237	238	84	53	40	37
South Gwinnett	328	317	127	100	57	67
Rockdale Heritage	182	163	82	62	14	12
Rockdale	140	142	54	52	19	17
Walton Loganville	135	118	56	25	39	15

Note: All numbers are HS students attending GPC. New student refers to a student new to GPC and newly graduated from HS.

International Student Enrollment I, Fall 1996-00

Country	96	97	98	99	00	Country	96	97	98	99	00	Country	96	97	98	99	00
Afghanistan	16	12	13	11	8	Canada	44	57	48	59	50	Germany		13	13	22	18
Albania			1	2	1	Cayman Isl		2	1	1		Ghana	12	19	13	14	22
Algeria		1	4	6	7	Central Africa	1	1	1	1	1	Greece		1	2	1	2
Angola		1		1	1	Chile	5	7	4	3	4	Grenada		1			1
Antarctica			1	1	1	China	34	35	36	33	34	Guatemala	1	1	2	5	7
Antigua/ Barbuda	1	2	2	1		Columbia	36	32	34	48	61	Guinea		2	4	4	5
Argentina	6	4	1	3	3	Congo			1	1		Guyana	34	27	24	22	15
Armenia						Coral Sea Isl			1	1	1	Haiti	25	14	18	17	18
Australia	4	3	1	1	5	Costa Rica	4	1	1	4	3	Honduras	4	3	5	3	5
Austria			2	1	4	Cote D'Ivoire	8	9	7	8	15	Hong Kong	15	16	18	15	13
Azerbaijan	1	2	2	1	1	Croatia		1	1		2	Hungary		1			
Bahamas	19	14	13	11	6	Cuba	3	6	5	6	4	India	79	78	97	117	113
Bangladesh	20	25	28	32	36	Czech Rep.			1	1	1	Indonesia	28	27	20	35	38
Barbados	4	3			2	Czechslovakia		1	3	1		Iran	36	38	28	37	44
Belarus		2		3	5	Denmark					1	Iraq			2	4	5
Belgium	2	5	5	7	4	Djibouti	2	2		1	1	Ireland	6	5	5	7	2
Belize	2	2	1	1	2	Dominica	3	3	2	1	2	Israel	10	6	5	9	8
Bermuda	4	3	6	4	5	Dominican R	3	2	3	9	5	Italy	3	9	5	4	5
Bolivia	2	1	3	2	2	Ecuador	4	4		2	1	Jamaica	121	125	116	104	85
Bosnia/Herzeg	9	14	23	24	29	Egypt	2	4	2	1		Japan	53	49	31	32	33
Botswana	1	1				El Salvador	6	7	8	7	10	Jordan	7	6	3	2	4
Brazil	19	25	30	29	32	Eritrea		14	19	18	14	Kenya	11	18	15	16	19
Bulgaria	2		2	6	3	Ethiopia	89	104	98	101	94	Korea, DPR	3	1	1		
Burma					3	Fiji		1		1		Korea, R	139	106	114	157	164
Burundi		1				Finland	1	3	3	3	5	Kuwait	3	3	1		
Byelarus	2					France	11	18	16	22	16	Laos	17	12	14	14	9
Cambodia	16	13	10	13	8	Gabon			1			Latvia	2	3	3	3	5
Cameroon	6	9	10	13	11	Gambia	3	3	3	5	5	Lebanon	6	6	7	8	8

International Student Enrollment II, Fall 1996-00

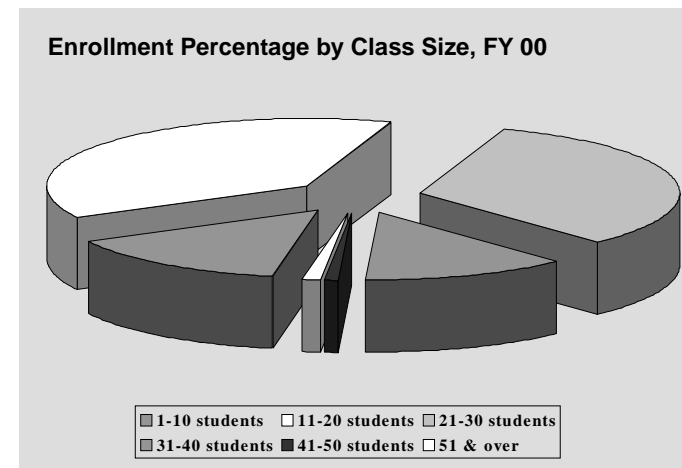
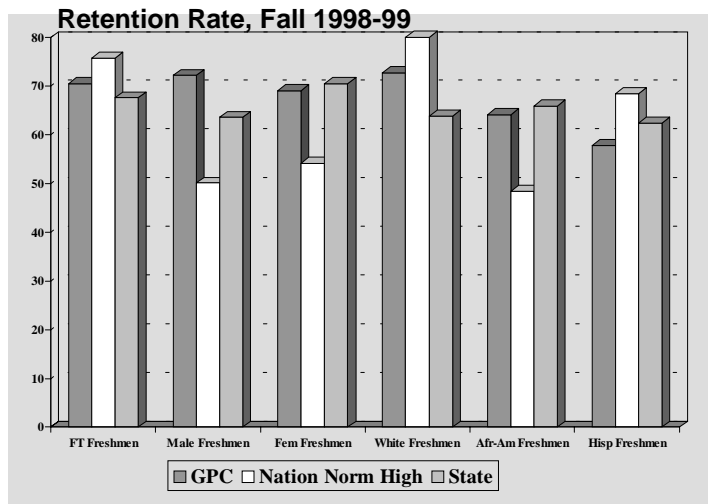
Country	96	97	98	99	00	Country	96	97	98	99	00	Country	96	97	98	99	00
Liberia	22	23	21	27	28	Peru	13	12	13	12	11	Tanzania	1	3	5	7	6
Libya	1		1			Philippines	7	7	9	9	12	Thailand	11	9	12	10	20
Lithuania		1	4	2	2	Poland	9	11	12	12	10	Togo			1	3	3
Macau	1		1	1	1	Portugal	3	2	3	1		Trinida/Tobag	20	23	29	30	28
Macedonia					1	Romania	16	24	26	29	34	Tunisia	2	2	2	2	5
Madagascar		1	1			Russia	17	20	25	32	27	Turkey	9	4	3	6	11
Malawi		2	2			Russia-Georgia	1	1				Uganda	2	1		3	2
Malaysia	5	13	11	7	10	Saudi Arabia	1	3	2	4	4	Ukraine	10	5	5	8	7
Mali		2	3	3	4	Senegal	1	5	7	13	14	United Arab Emer.		1			
Mexico	20	19	22	29	29	Sierra Leone	12	11	12	12	9	United Kingdom	45	43	32	35	39
Moldova	2	2	2	2	3	Singapore	2	3	2			Uruguay	4	3	1		2
Morocco	5	5	5	8	8	Somalia	12	15	14	21	33	US Related	176	98	68	1206	
Mozambique	2	2				South Africa	8	8	8	12	12	Uzbekistan	2	1	2	1	2
Namibia			1			Spain	7	9	12	11	8	Venezuela	15	21	20	21	27
Nepal		1	1	2	3	St. Kitts & Nevis	1		1	2	2	Vietnam	216	228	219	217	230
Netherlands	4	5	7	4	5	St. Lucia	4	2	2	1	1	West Germany	16				
Netherlands Ant.	2					St. Vincent	2	5	4	1		Yemen					
Nicaragua	6	6	7	6	3	Sudan	1	5	5	6	6	Yugoslavia	1	2	2	4	7
Nigeria	89	96	99	116	107	Suriname	1	1		1	6	Zaire	9	10	7	10	
Norway	2	1	1	2	2	Sweden	9	10	11	13	13	Zambia	3	2		2	1
Pakistan	40	36	29	40	43	Switzerland	1	1	1		2	Zimbabwe	3	2	1	1	5
Panama	4	4	7	8	8	Syria	3	4	3	1	1	Total	1943	1924	1881	2020	2070
Paracal Isl.	1					Taiwan	39	35	49	46	55						
Paraguay		1			1	Tajikistan		1	1	1	1						

Retention Rate, Fall 1998-99; Enrollment by Class Size, FY 1987-00

Retention Rate, Fall 1998-99						
Institution	Full-Time Freshmen	Male Freshmen	Female Freshmen	White Freshmen	African-Am. Freshmen	Hispanic Freshmen
GPC	70.5%	72.2%	69.1%	72.7%	64.2%	57.8%
National Norm	53.5-75.8%	38.3-50.1%	45.8-54.2%	45.9-80.0%	19.8-48.4%	0.0-68.4%
Georgia Average	67.6%	63.6%	70.5%	63.8%	65.9%	62.4%

Source: Board of Regents, Draft Benchmarking Materials. July 2000

Enrollment Percentage by Class Size, FY 1987-00							
Class Size	FY 87	FY 95	FY 96	FY 97	FY 98	FY 99	FY 00
1-10 students	21.4%	13.4%	12.0%	12.0%	17.7%	19.2%	14.5%
11-20 students	35.9%	38.4%	39.6%	42.3%	41.9%	40.8%	38.0%
21-30 students	32.2%	36.9%	37.3%	35.5%	29.4%	28.5%	32.8%
31-40 students	9.0%	9.6%	9.1%	8.6%	9.9%	10.2%	12.7%
41-50 students	1.2%	1.4%	1.3%	1.2%	0.5%	0.6%	1.0%
Over 50 students	0.4%	0.7%	0.7%	0.4%	0.6%	0.7%	1.0%



Student Financial Aid Awarded by Source, Fiscal Year 1996-00

Awards	FY 1996		FY 1997		FY 1998		FY 1999		FY 2000	
	Student #	\$ Amount	Student #	\$ Amount	Student #	\$ Amount	Student #	\$ Amount	Student #	\$ Amount
GRANTS										
Pell	3,600	4,350,679	3,994	5,159,254	4,343	6,473,145	4,293	6,423,000	3,717	5,898,089
SEOG	324	140,000	674	224,069	545	218,602	651	266,700	992	322,349
Vocational Rehabilitation	50	25,000	52	26,000	N/A	N/A	N/A	N/A	N/A	N/A
Georgia Incentive	165	72,745	120	33,315	73	16,100	N/A	N/A	N/A	N/A
HOPE	1,581	1,196,666	2,020	1,508,034	2,612	2,240,057	3,097	2,767,844	6,346	3,283,802
LOANS										
GSL	4,500	8,000,000	4,800	8,125,610	4,860	8,932,197	1,626	3,567,099	*	*
Institutional	125	20,000	120	18,000	122	18,000	N/A	N/A	N/A	N/A
Regents	45	17,200	36	17,200	30	17,200	30	15,000	N/A	N/A
PLUS	10	40,125	24	90,544	15	80,514	1	1,274	1	1,637
Subsidized									1,315	2,856,001
Unsubsidized	2,465	3,500,000	2,909	2,933,098		4,044,366	1,200	3,150,791	945	2,327,305
SCHOLARSHIPS										
Institutional	460	260,000	581	301,936	908	298,821	357	167,504	430	170,668
Other	1,075	400,000	2,000	425,000	N/A	N/A	122	95,666	98	142,210
STUDENT EMPLOYMENT										
College Work Study	160	270,007	210	283,631	232	461,687	140	309,923	129	310,370
Student Assistants	325	295,075	330	298,000	N/A	N/A	N/A	N/A	N/A	N/A
TOTAL AWARDED	14,885	18,587,497	17,870	19,443,691	13,740	22,800,689	11,517	16,764,801	13,973	15,312,431

* GSL was replaced by Subsidized and Unsubsidized Loans in FY 2000.

Entering Freshman Average SAT & High School GPA, FY 97 & 01

	FY97	FY01	USG FY97
Attending 5 or More College-Level Hours			
SAT Verbal			
Male Average	459	455	501
Female Average	439	448	485
Average SAT Verbal	448	451	492
SAT Math			
Male Average	463	472	508
Female Average	420	440	466
Average SAT Math	440	453	485
Composite SAT	888	904	977
High School GPA			
Male Average	2.37	2.75	2.73
Female Average	2.5	2.87	2.91
Average GPA	2.44	2.82	2.83
Attending 25 or More College-Level Hours			
SAT Verbal			
Male Average	457	451	515
Female Average	440	438	498
Average SAT Verbal	448	444	505
SAT Math			
Male Average	466	482	526
Female Average	426	442	481
Average SAT Math	445	460	501
Composite SAT	893	904	1006
High School GPA			
Male Average	2.4	2.63	2.86
Female Average	2.55	2.88	3.02
Average GPA	2.48	2.77	2.95

Applications Received, Fall 1996-00; Testing Activities, FY 1996-00

Applications Received, Fall 1996-00										
Applications Received	1996		1997		1998		1999		2000	
	#	%	#	%	#	%	#	%	#	%
Total App. Received	12,802	100	13,180	100	12,963	100	12,123	100	13,756	100
Completed Files	8,193	64	8,642	66	8,228	63	7,693	64	8,289	60
Completed – Registered	5,691	44	4,850	37	4,231	33	5,000	41	5,149	37
Completed – Unregistered	2,502	20	3,792	29	3,997	30	2,693	23	3,140	23
Incomplete Files	4,609	36	4,538	34	4,735	37	4,430	36	5,467	40

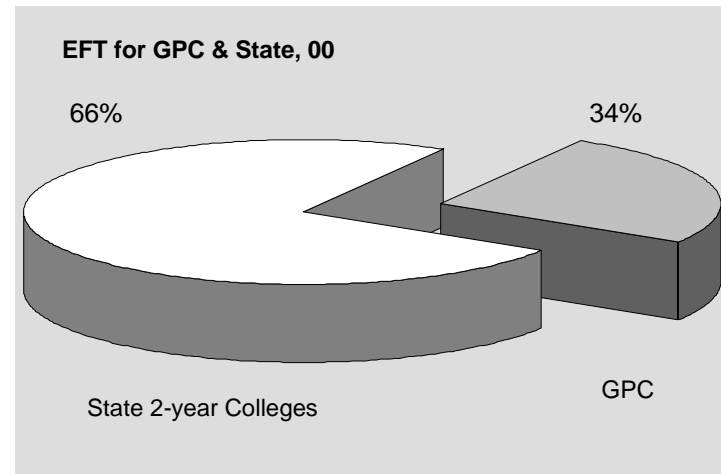
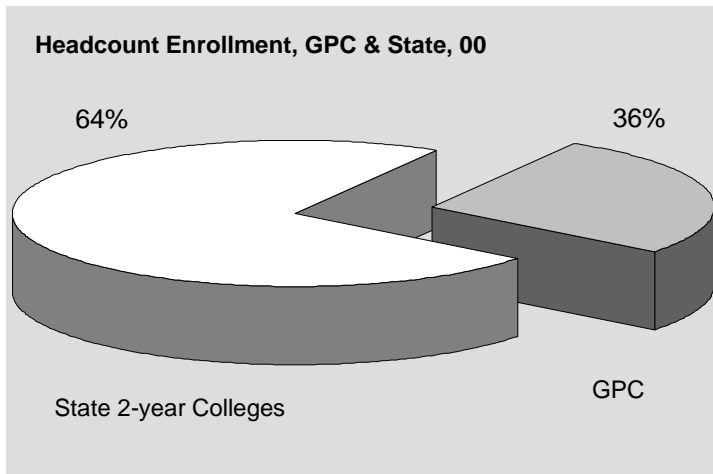
Testing Activities, FY 1996-00					
Tests Administered	1996	1997	1998	1999	2000
ACT	163	199	209	187	89
Alternate Regents'	329	289	360	390	334
BSE/CPE-Exit	4,686	4,266	3,974	2,634	2,839
BSE/CPE-Placement	6,602	6,574	5,904	4,855	4,656
CLEP	154	148	237	124	136
(COMPASS) Placement					1,735
(COMPASS) Exit					1,100
Dental Hygiene Board	25	33	39	24	25
English as a Second Language Placement (ENSL)	797	780	821	968	809
Independent Study	27	30	39	25	26
Institutional SAT	1,566	1,459	1,199	1,216	970
Regents' Test	4,550	4,581	4,699	3,282	5,520
SAT / Achievement Tests	1,541	1,495	1,562	1,491	901
Test of English as a Foreign Language (TOEFL)	200	320	439	722	962
*Other	456	817	1,666	2,964	
Total	21,096	20,991	21,148	18,882	20,102

Transfer Activities, FY 1999

	Transfer to GPC FY99	Transfer from GPC FY99		Transfer to GPC FY99	Transfer from GPC FY99
Georgia Institute of Technology	96	200	Dalton College	7	2
Georgia State University	186	810	Macon College	16	9
Medical College of Georgia	1	14	State College Group	23	11
University of Georgia	106	610	Abraham Baldwin Agricultural College	4	4
University Group	389	1,634	Atlanta Metropolitan College	46	
Georgia Southern University	180	51	Bainbridge College	2	
Valdosta State University	41	24	Coastal Georgia Community College	7	
Regional University Group	221	75	Darton College	15	
Albany State University	16	1	East Georgia College	6	
Armstrong Atlantic State University	18	10	Floyd College	7	9
Augusta State University	4	9	Gainesville College	40	27
Clayton College and State University	61	96	Gordon College	50	10
Columbus State University	10	4	Middle Georgia College	14	
Fort Valley State University	16	3	South Georgia College	3	1
Georgia College and State University	39	32	Waycross College	1	
Georgia Southwestern State University	10	2	Associate Degree Group	195	51
Kennesaw State University	44	183	Total University System	1,121	2,264
North Georgia College and State University	30	55	Average GPA at GPC		2.36
Savannah State University	7		Average GPA at Transfer Institution		2.15
Southern Polytechnic State University	21	30			
State University of West Georgia	17	68			
State University Group	293	493			

Comparison with Other USG Two-Year Colleges, Fall 2000

Institution	Headcount Enrollment	EFT	Non-White	Female	Georgia Residents	Freshmen	New Freshmen
Abraham Baldwin Agric. College	2,630	1,920	20%	50%	94%	64%	34%
Atlanta Metro. College	1,901	1,186	100%	65%	93%	73%	27%
Bainbridge College	1,316	745	27%	63%	99%	57%	20%
Coastal Georgia Comm. College	1,912	1,059	28%	67%	93%	61%	21%
Darton College	2,805	1,839	37%	67%	96%	61%	23%
East Georgia College	1,313	908	39%	54%	97%	76%	35%
Floyd College	2,090	1,411	12%	63%	98%	68%	28%
Gainesville College	3,256	2,153	10%	59%	98%	62%	23%
Georgia Perimeter College	13,708	8,436	47%	61%	93%	60%	16%
Gordon College	2,890	2,258	26%	62%	98%	70%	31%
Middle Georgia College	1,941	1,481	30%	52%	97%	64%	30%
South Georgia College	1,257	846	26%	63%	96%	55%	25%
Waycross College	861	512	22%	68%	99%	55%	21%
Two-Year Colleges Total	37,880	24,754	46%	61%	95%	63%	23%



Athletics, FY 2000

Colors: Gold, Cardinal, Blue

Affiliation: NJCAA

Mascot: Jaguar

Conference: GJCAA

RECENT ACCOMPLISHMENTS

Baseball

Head Coach: David Stephenson

Assistant Coach: Ted Wallen

- 14 players drafted in the 90s; also in 90s 13 All-Tournament players, 28 All-Region selections, 6 All-Americans, and 1 Academic All-American

Softball

Head Coach: Bonnie Young

Assistant Coach: Ed Schutte

- Finished 4th in the conference in 2000. Heather Nations led GJCAA in Earned-Run Average.

Basketball (Men's)

Head Coach: Alfred Barney

Assistant Coach: Greg Smarr

- GJCAA and Region XVII Champions in 2000
- Top Ten in National Poll in 1999

Basketball (Women's)

Head Coach: James Waldon

Assistant Coach: Christina Shafer

- Finished 2nd in GJCAA in the program's 3rd year

Soccer (Men's)

Head Coach: Marc Zagara

Assistant Coach: Ron Moore

- Advanced to National Tournament in 2000
- Past eight seasons 133-48-24 record. The team has six state championships, three Southeastern championships, and three national tournament appearances in the recent past.
- Zagara's teams have been nationally ranked every year.

Soccer (Women's)

Head Coach: Vacant

Assistant Coach: Vacant

Tennis (Men's)

Head Coach: Chris Decker

Assistant Coach:

- 1998, 1999, and 2000 National Champions
- Eight first-team and two second-team All-Americans in 2000
- Pre-season number one in 1999 and 2000

Tennis (Women's)

Head Coach: Chris Decker

Assistant Coach:

- Won 2000 National Championship
- Regional Champions in 1999 and 2000
- Finished 7th at 1999 National Tournament

Sports Information Director: Daryl Brooks

Funding and Facilities

Student Tuition and Fees, FY 2001-2002

Tuition (per hour)	
In-State	\$53.00
Out-of-State	\$213.00
Required Fees	
Application (one time only)	\$20.00
Parking	\$8.00
Student Activity (except Rockdale Center)	\$42.00
Student Activity (Rockdale Center)	\$20.00
Student Athletic	\$27.00
Technology	\$38.00
Special Fees	
Applied Music	\$75.00
Dental Hygiene Insurance	\$8.00
Late Payment	\$38.00
Nursing Insurance/Test	\$15.00
Tele Course	\$50.00
International Student Health Insurance (F1 Visa only)	\$265.00

Tuition and Fees

Georgia Perimeter College students are responsible for tuition and fees which are set each year. Fees include student activity, athletic, parking, technology, and other special fees. Tuition and fees are due each semester at the time of registration. Registration is not complete until all fees are paid. Payment may be in cash, by check payable in U.S. currency, or with a Visa or Mastercard. The College will withhold copies of transcripts and other student records

and/or revoke the enrollment of students who owe the College money.

Fees and expenses are subject to change without notice.

Most fees are assessed for on-campus students only. Instruction delivered at Clarkston, Lawrenceville, Dunwoody, and Decatur is considered on-campus. Instruction at the Rockdale and Alpharetta Centers and other locations or by distance education is considered off-campus.

The precise amount of a student's fees for a semester depends upon a number of factors:

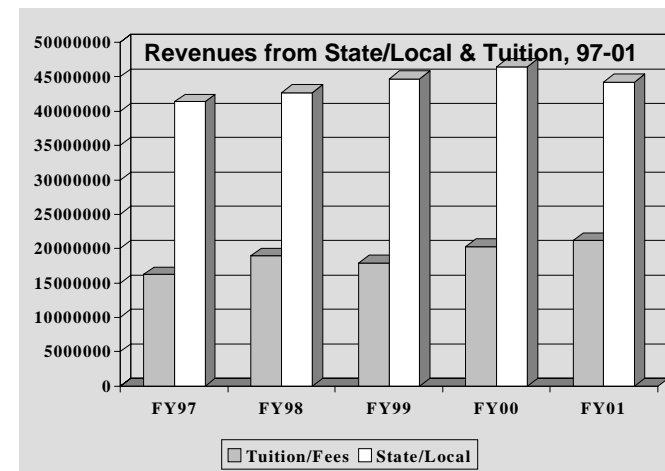
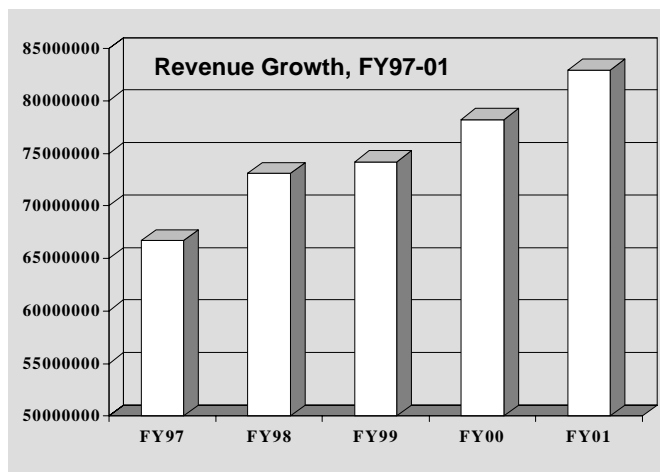
- The number of courses taken
- The nature of the courses
- The location at which the courses are taught
- The number of credit hours assigned to the courses
- The residence status of the student

It is the responsibility of the student to be informed of and observe all regulations and procedures regarding the payment of fees and the entitlement of refunds.

Revenues and Expenditures Per Student, FY 1997-2001

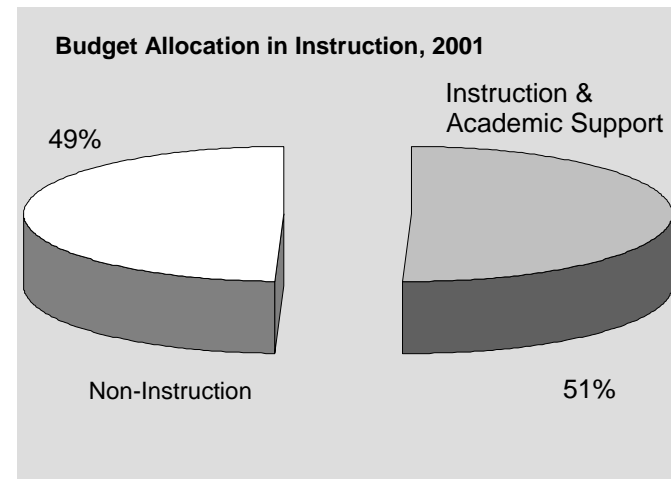
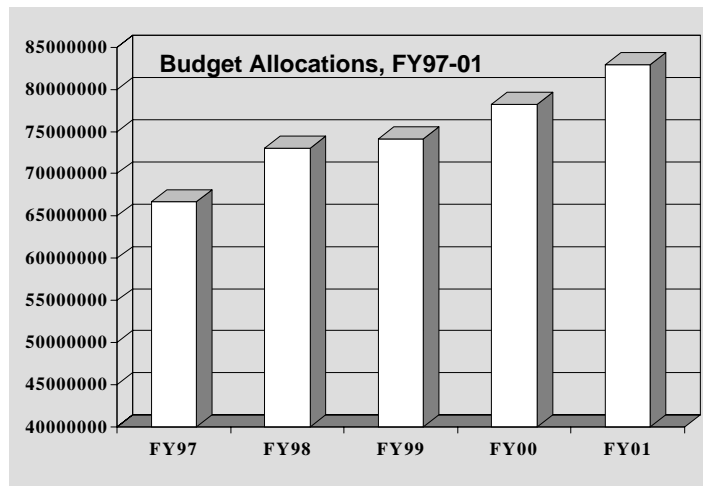
Revenues	FY97	FY98	FY99	FY00	FY01 Budget
Tuition and Fees	\$16,215,228	\$18,921,251	\$17,908,958	20,239,642	21,157,062
State/Local Appropriations	41,336,952	42,705,702	44,671,732	46,434,007	44,235,964
Other Income	176,310	295,041	348,563	120,461	273,000
Departmental Sales & Services	1,526,604	1,201,694	1,259,420	1,458,953	3,271,190
Sponsored Operations	7,426,421	9,963,665	10,015,886	9,981,371	14,000,000
Total Revenues	\$66,681,515	\$73,087,353	\$74,204,559	\$78,234,434	\$82,937,216

Expenditures Per Student	FY97	FY98	FY99	FY00	FY01 Budget
EFT Students	8,611	8,863	8,219	8,295	8,438
Expenditure per EFT Student (excluding sponsored)	\$6,882	\$7,113	\$7,753	\$8,177	\$8,170



Budget Allocations, FY 1997-2001

Allocations	FY97	FY98	FY99	FY00	FY01 Budget
Instruction	\$29,189,677	\$31,206,249	\$30,613,754	\$33,163,209	\$34,945,474
Public Service			202,819	84,004	87,577
Academic Support	6,014,801	6,655,918	6,721,191	7,031,388	6,998,608
Student Services	6,442,825	6,669,103	6,710,204	6,907,270	7,807,021
Institutional Support	11,453,672	11,479,365	12,826,233	13,935,643	11,358,510
Plant Operations	6,156,456	7,027,642	7,172,913	6,709,646	7,740,026
Sponsored Operations	7,426,421	9,963,665	9,889,774	10,399,888	14,000,000
Total Allocations	\$66,683,852	\$73,001,942	\$74,136,888	78,231,048	\$82,937,216



Library Collections, FY 1996-00

Library Collections	FY96	FY97	FY98	FY99	FY00
Holdings					
Paper Volumes	225,776	232,671	209,953	206,923	211,844
Paper Titles	152,160	151,775	156,165	158,993	158,125
Serial Subscriptions	1,339	1,073	1,073	1,070	2,032
Number of Microforms	31,660	32,397	33,780	35,000	36,511
Electronic Titles			351	500	
Expenditures					
Materials: Paper & Microforms	\$253,337	\$121,517	\$269,282	\$400,543	\$249,748
Current Serial: Paper & Microforms	133,950	129,228	132,833	91,631	155,647
Audio-Visual Materials	\$32,031	\$31,985	\$31,944	\$26,533	\$24,494
Circulation					
General Collection	129,315	110,614	97,318	63,930	69,472*
Reserve Collection			16,793	8,888	
Interlibrary Loans					
To Other Libraries	1,327	1,375	1,374	522	764
From Other Libraries	326	254	275	183	179

Note: * The number in FY 2000 includes general collection and reserve collection.

Classrooms in Use by Campus, Day, and Hour, Fall 2000

Day & Hour	Clarkston (32 general rooms)		Dunwoody (53 general rooms)		Decatur (17 general rooms)		Lawrenceville (23 general rooms)		Rockdale (9 general rooms)	
	#	%	#	%	#	%	#	%	#	%
MWF										
8:00-9:10AM	29	91%	29	55%	13	76%	23	100%	5	56%
9:25-10:35AM	31	97%	45	85%	16	94%	23	100%	7	78%
10:40-11:50AM	31	97%	43	81%	16	94%	23	100%	6	67%
MW										
8:00-9:40AM	31	97%	41	77%	13	76%	23	100%	6	67%
10:00-11:40AM	31	97%	48	91%	16	94%	23	100%	6	67%
1:40-3:25PM	21	66%	32	60%	6	35%	21	91%	2	18%
3:30-5:10PM	6	19%	19	36%	1	6%	12	52%	0	0%
5:20-7:00PM	26	81%	40	75%	9	53%	23	100%	7	78%
7:10-8:50PM	20	63%	36	68%	5	29%	20	87%	8	89%
8:55-10:40PM	4	13%	7	13%	4	24%	11	48%	1	11%
TR										
8:00-9:40AM	29	91%	42	79%	14	82%	23	100%	9	100%
10:00-11:40AM	28	88%	49	92%	13	76%	23	100%	6	67%
11:55-1:35PM	30	94%	45	85%	10	59%	23	100%	8	89%
1:40-3:25PM	24	75%	30	57%	1	6%	20	87%	3	33%
3:30-5:10PM	4	13%	12	23%	0	0%	10	43%	1	11%
5:20-7:00PM	25	78%	36	68%	11	65%	21	91%	8	89%
7:10-8:50PM	24	75%	31	56%	6	35%	18	78%	9	100%
8:55-10:40PM	4	13%	3	6%	0	0%	9	39%	2	22%

Average Weekly Percentage of General Classrooms in Use by Hour, 94-98

Time of Day	Fall 1994	Fall 1995	Fall 1996	Fall 1998	System 2-year Fall 1998	System Total Fall 1998
7:00AM	-	-	-	8%	3%	3%
8:00AM	9%	55%	68%	57%	45%	35%
9:00AM	71%	59%	65%	63%	55%	48%
10:00AM	80%	71%	78%	70%	61%	53%
11:00AM	79%	71%	76%	71%	53%	49%
12:00PM	73%	66%	65%	36%	35%	32%
1:00PM	44%	42%	47%	35%	33%	35%
2:00PM	42%	38%	40%	36%	23%	33%
3:00PM	22%	17%	20%	24%	13%	20%
4:00PM	19%	15%	18%	18%	9%	15%
5:00PM	36%	32%	36%	18%	11%	17%
6:00PM	58%	53%	61%	55%	37%	29%
7:00PM	50%	47%	47%	47%	32%	24%
8:00PM	40%	40%	39%	36%	24%	17%
9:00PM	40%	39%	38%	27%	12%	9%
10:00PM	4%	4%	-	3%	2%	2%

Note: Fall 1997 data not available. Data for Fall 1999 and newer not available.

Source: *University System Facilities Curriculum Room Utilization Report: Fiscal Year 1998.* 1999, Board of Regents.

Buildings, Improvement & Renovations, FY 99-00

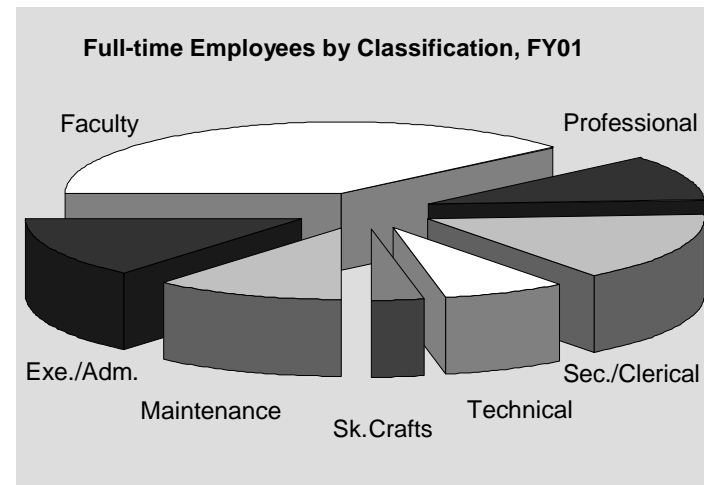
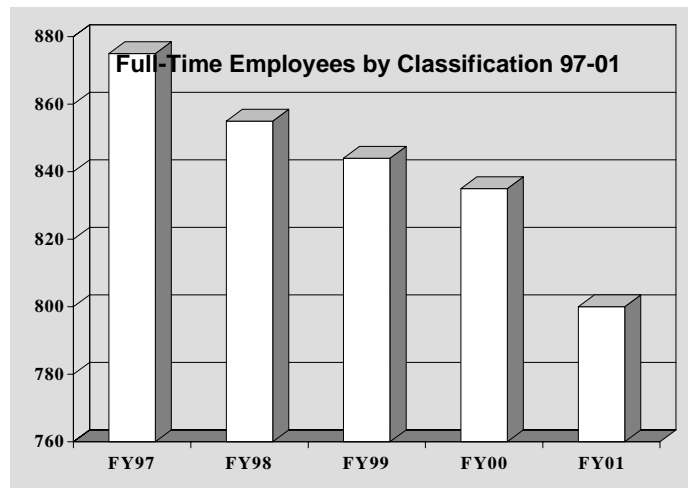
Campus	Building	Improvement & Renovation Projects	Improvement & Renovation Costs	Total Replacement Values
Clarkston	CG	Renovation of Swimming Pool	\$596,000.00	\$39,214,895.00
	Multiple buildings CF, CG, CL, CB, CF, CH	Recoat concrete, refinish gym floor, replace carpet, supplementary AC, office renovations	\$213,931.00	
Decatur		Replace fire alarm systems, bldgs SA, SB, SC, SD	\$172,540.00	\$13,411,960.00
	Multiple buildings SC, SB,	Testing Center, installation emergency equipment in labs, entrance door to pool, ADA lift to pool	\$41,757.00	
Dunwoody		Door hardware replacement, bldgs. NA, NC, & ND	\$58,740.00	\$20,715,110.00
	NC	Testing Center	\$37,601.00	
	NB	Pedestrian bridge repair, soccer field work, sidewalk and stairs, parking control, irrigation repair, tennis court windscreen	\$107,880.69	
	NC	Dental lab improvements	\$2,600.00	
Lawrenceville	GD	Faculty office renovations	\$46,177.00	NA
Rockdale				NA
Total			\$1,277,266.69	NA

Note: All the codes in the table have two capital letters. The first is the code for campus and the second code for building.

Employees

Full-Time Employees by EEO Classification, FY 1997-2001

EEO Category	1997	1998	1999	2000	2001
Executive/Administration/Managerial	106	104	104	102	110
Faculty	333	312	303	325	312
Professional Staff	85	98	94	88	83
Secretarial/Clerical	186	164	163	135	123
Technical/Paraprofessional	34	43	47	56	59
Skilled Crafts	31	33	32	31	25
Service Maintenance	100	101	101	98	88
Totals	875	855	844	835	800



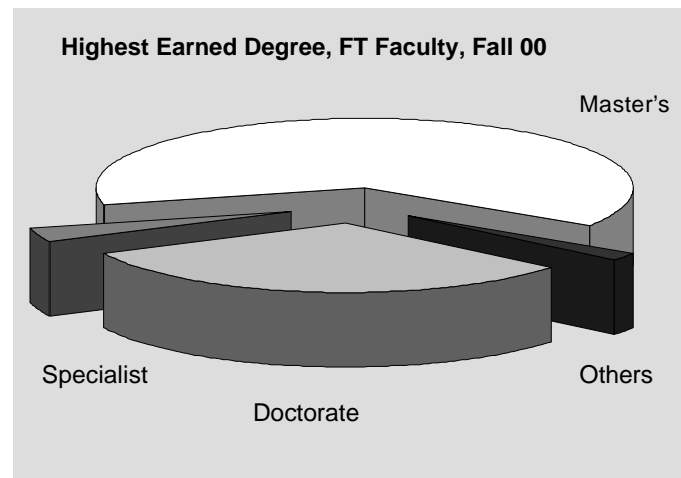
Corps of Instruction – All Campuses, Fall 2000

	Instructional Faculty	Library Faculty	Dept. Head/ Coor./Acad. Dir.	Deans Academic	Other Members of the Corps	Total
Rank						
Professor	18	0	4	3	0	25
Assoc. Professor	67	1	4	1	2	75
Asst. Professor	141	3	13	0	1	158
Instructor	86	5	2	0	3	96
Unranked	0	4	4	0	9	17
Gender						
Male	126	3	9	1	6	145
Female	186	10	18	3	9	226
Race						
Asian	13	0	0	0	1	14
Black	59	2	6	0	5	72
Hispanic	5	0	0	0	0	5
Native American	1	0	0	0	0	1
Multiracial	1					1
White	233	11	21	4	9	278
Tenure						
Tenured	167	0	16	3	0	186
On Track	66	0	3	1	2	72
Not Eligible*	79	13	8	0	13	113
Highest Degree						
Doctorate	99	2	9	4	8	122
Specialist	10	1	1	0	0	12
Master's	197	10	17	0	6	230
Bachelor's	6				1	7
Total	312	13	27	4	15	371

*Not eligible/not on track

Highest Earned Degree, Full-Time Teaching Faculty, Fall 2000

Academic Area	Doctorate	Specialist	Master's	Others	Total
Business Administration	4	0	20	0	24
Fine Arts	1	1	8	0	10
Foreign Language	2	0	8	0	10
Health Sciences/Physical Education	4	2	25	1	32
Humanities/Honors	32	0	63	0	95
Math/Computer Science	9	4	48	1	62
Science	24	1	10	0	35
Social Sciences	22	2	15	0	39
Interpreter Training	0	0	0	3	3
Unclassified	1	0	0	1	2
Total	99	10	197	6	312
% of FT Faculty	31.7%	3.2%	63.1%	1.9%	100.0%

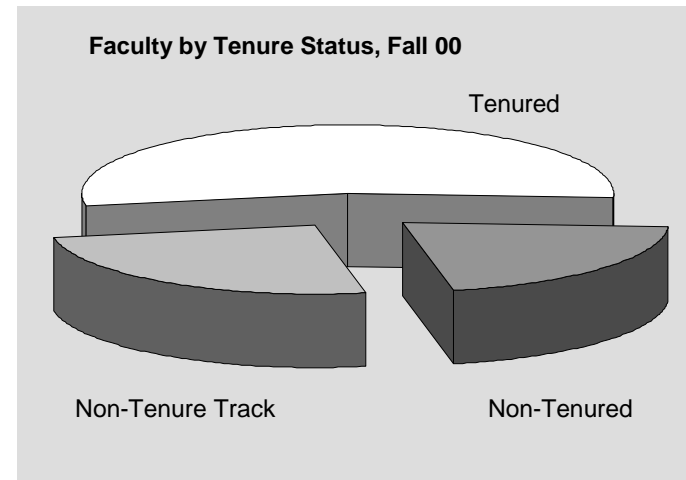
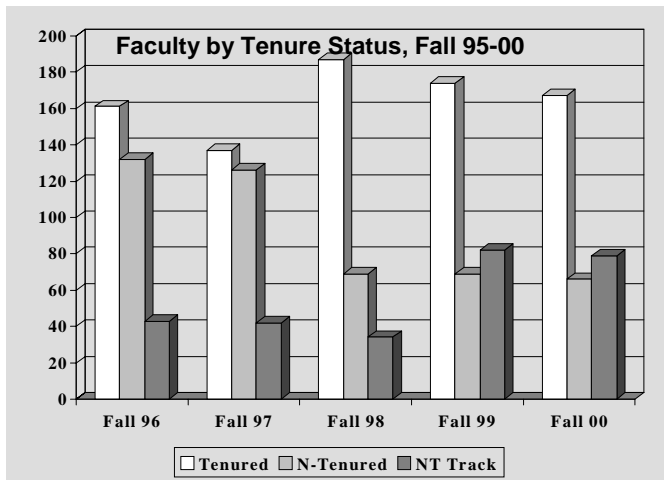


Faculty Distribution by Rank and Race, Fall 1996-00

Academic Rank	Fall 96		Fall 97		Fall 98		Fall 99		Fall 00	
	#	%	#	%	#	%	#	%	#	%
Professor	17	0%	17	6%	20	7%	15	5%	18	6%
Asian	0	0%	0	0%	0	0%	0	0%	0	0%
Black	0	0%	0	0%	0	0%	0	0%	0	0%
Hispanic	0	0%	0	0%	0	0%	0	0%	0	0%
Native American	0	0%	0	0%	0	0%	0	0%	0	0%
White	17	100%	17	100%	20	100%	15	100%	18	100%
Associate Professor	89	26%	80	26%	78	27%	73	22%	67	22%
Asian	2	2%	3	4%	3	4%	3	4%	3	5%
Black	10	11%	10	13%	11	14%	10	14%	9	13%
Hispanic	0	0%	1	1%	3	4%	3	4%	3	5%
Native American	0	0%	0	0%	0	0%	1	1%	1	2%
White	77	87%	66	83%	61	78%	56	77%	51	76%
Assistant Professor	161	48%	161	53%	149	51%	147	45%	141	45%
Asian	4	2%	4	2%	5	3%	5	3%	5	4%
Black	34	21%	30	19%	31	21%	30	20%	29	21%
Hispanic	3	2%	2	1%	1	1%	1	1%	1	1%
Native American	0	0%	0	0%	0	0%	0	0%	0	0%
White	120	75%	125	78%	112	75%	111	76%	106	75%
Instructor	69	21%	47	15%	42	14%	86	26%	86	28%
Asian	5	7%	2	4%	2	5%	6	7%	5	6%
Black	20	29%	18	38%	10	24%	24	28%	21	24%
Hispanic	1	1%	1	2%	2	5%	2	2%	1	1%
Native American	0	0%	0	0%	0	0%	0	0%	0	0%
Multiracial									1	1%
White	43	62%	26	55%	28	67%	53	62%	58	67%
Unranked	0	0%	0	0%	1	0%	4	1%		
Asian	0	0%	0	0%	0	0%	0	0%		
Black	0	0%		0%	1	100%	0	0%		
Hispanic	0	0%	0	0%	0	0%	0	0%		
Native American	0	0%	0	0%	0	0%	0	0%		
White	0	0%	0	0%	0	0%	4	100%		
Total	336		305		290		325		312	

Faculty Distribution by Tenure Status, Fall 1996-00

Year	Tenured		Non-Tenured		Non-Tenure Track		Total
	#	%	#	%	#	%	#
Fall96	161	56	132	46	43	15	336
Fall97	137	47	126	43	42	14	305
Fall98	187	64	69	24	34	12	290
Fall99	174	54	69	21	82	25	325
Fall00	167	54	66	21	79	25	312

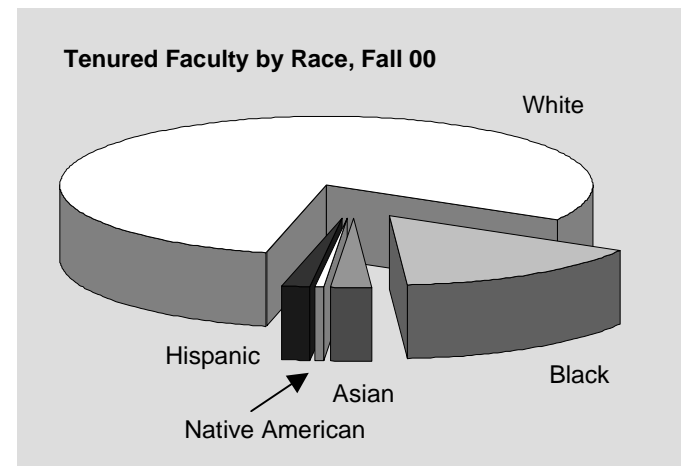
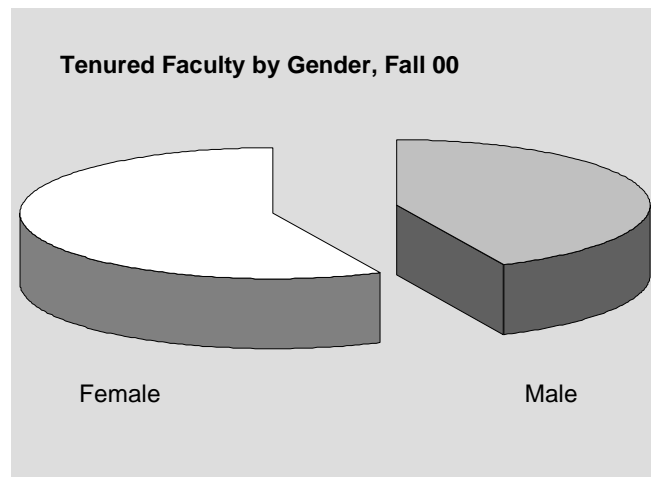


Tenure Status by Academic Area, Gender, & Race, Fall 2000

Academic	Tenured	Non-Tenured	NT Track	Total
Business	16	2	6	24
Fine Arts	5	3	2	10
Foreign Languages	5	3	2	10
Health Sci./Phys. Ed.	18	7	7	32
Humanities/Honor	53	20	22	95
Math/CS/ENGR	34	11	17	62
Science	19	9	7	35
Social Sciences	17	10	12	39
Interpreter Training	0	0	3	3
Unclassified	0	1	1	2
Total	167	66	79	312

Gender	Tenured	Non-Tenured	NT Track	Total
Male	72	22	32	126
Female	95	44	47	186
Total	167	66	79	312

Race	Tenured	Non-Tenured	NT Track	Total
Black	26	15	18	59
Asian	4	6	3	13
Native American	1	0	0	1
Hispanic	3	2	0	5
White	133	43	57	233
Multiracial	0	0	1	1
Total	167	66	79	312



Faculty Workload by Area, Fall 1999 vs 2000; by Campus, Fall 2000

Area	Sections Taught		Students Taught		FTF	PTF	Average Class		Part-time %	
	Fall 99	Fall 00	Fall 99	Fall 00	Classes Fall 00	Classes Fall 00	Fall 99	Fall 00	Fall 99	Fall 00
ATEC	81	80	1,770	1,936	44	36	22	24	39.5%	45.0%
Business	152	140	3,267	3,306	81	59	21	24	38.8%	42.1%
Dental Hygiene	8	8	184	189	7	1	23	24	12.5%	12.5%
Distance Education	37	69	1,072	1,768	67	2	29	26	0.0%	2.9%
ENSL	43	43	692	804	27	16	16	19	34.9%	37.2%
FIRE	1	2	10	16	0	2	10	8	100.0%	100.0%
HEDS	30	21	446	366	9	12	15	17	70.0%	57.1%
Humanities/Fine Arts	550	472	9,291	9,490	266	206	17	20	46.2%	43.6%
Interpreter Training	17	15	162	115	11	4	10	8	41.2%	26.7%
Joint Enrollment	39	48	612	715	15	33	16	15	74.4%	68.8%
Learning Support	290	259	5,351	5,208	165	94	18	20	41.0%	36.3%
Mathematics	238	218	4,850	4,831	157	61	20	22	32.8%	28.0%
Nursing	15	12	530	489	12	0	35	41	6.7%	0.0%
Physical Education	110	92	1,774	1,871	53	39	16	20	40.9%	42.4%
Science (Laboratory)	142	124	2,436	2,238	71	53	17	18	45.1%	42.7%
Science (Lecture)	169	138	3,037	2,925	75	63	18	21	36.7%	45.7%
Social Sciences	279	272	6,979	7,565	154	118	25	28	45.9%	43.4%
College Total	2,201	2,013	42,463	43,832	1,214	799	19	22	41.6%	39.7%
Campus	Sections Taught Fall 00	Students Taught Fall 00	FTF Classes Fall 00	PTF Classes Fall 00	Average Class Size, Fall 00	Part-time % Fall 00				
Clarkston	629	12,977	419	210	21	33.4%				
Decatur	163	2,957	108	55	18	33.7%				
Dunwoody	666	14,981	387	279	22	41.9%				
Lawrenceville	433	10,641	255	178	25	41.1%				
Rockdale	122	2,276	45	77	19	63.1%				

References

Quick Reference I for Georgia Perimeter College

Number of Students On & Off Campus, Fall 2000

Total Headcount (Unduplicated)	13,708
Headcount by Gender: Male	5,364
Female	8,344
Headcount by Race: Asian	1,296
Black	4,142
Hispanic	480
Multiracial	438
Native American	39
White	7,313
Headcount by Campus: Decatur	1,137
Clarkston	4,498
Dunwoody	4,671
Lawrenceville	3,279
Rockdale	817
Off campus/Distance Education	1,376
Equivalent Full-Time	8,439
Total Cont. & Corp. Ed. Participants	5,290

Degrees Awarded FY 2000

Total Awarded	989
Associate of Arts	99
Associate of Science	727
Associate of Applied Science	25
Certificate	12
Career Program	126

Degrees by Campus

Clarkston	400
Lawrenceville	198
Dunwoody	290
Decatur/Rockdale	101

Degrees by Race

Asian	63
Black	275
Hispanic	29
Native American	1
Multiracial	29
White	592

Enrollment by County Fall 2000

Cherokee	59
Clarke	33
Clayton	194
Cobb	518
DeKalb	3,169
Douglas	31
Fayette	33
Forsyth	84
Fulton	1,986
Gwinnett	3,461
Henry	82
Newton	222
Rockdale	523
Others in-State	253
Out-of-State	2,839

Tuition and Fees FY 2001-02

Tuition (per hour)	
In-State	\$53.00
Out-of-State	\$213.00
Required Fees	
Application (one time only)	\$20.00
Parking	\$8.00
Student Activity (except Rockdale)	\$42.00
Student Activity (Rockdale)	\$20.00
Student Athletic	\$27.00
Technology	\$38.00
Special Fees	
Applied Music	\$75.00
Dental Hygiene Insurance	\$8.00
Late Payment	\$38.00
Nursing Insurance/Test	\$15.00
Tele Course	\$50.00
Int'l Student Health Insurance	\$265.00

Full-Time Employees FY 2001

Executive/Adm./Managerial	110
Faculty	312
Professional Staff	83
Secretarial/Clerical	123
Technical/Paraprofessional	59
Skilled Crafts	25
Service Maintenance	88
Totals	800

Quick Reference II for Georgia Perimeter College

Georgia Demographics	
Population 2000	8,186,453
Population by Race*	
Asian, Hawaiian, and Islander	2.2%
Black	28.7%
Hispanic	5.3%
Native American	0.3%
White	62.6%
Multi-racial and Other Race	3.8%
Population by Age	
Under 5	7.3%
Under 18	26.5%
18-64	56.6%
65 and over	9.6%
Educational Attainment for Adult 25 Years Old and Over, 2000	
High School Graduates	2,853,605
College Graduates	777,158
Income and Poverty, 1998	
Personal Income Per Capita	\$22,201
Median Household Income	\$38,665
Percent below Poverty Level	13.6%

Labor Force	
Civilian Popu. Employed 97	66.2%
Nonfarm Employment 98 (in Manufacturing)	15.9%
Average Annual Pay	\$29,020
State Government	
General Revenue Per Capita 97	\$2,632
State Education Enrollment Rate	
Public Elementary-Secondary 96	96.3%
FT College, Percent of total 96	67.3%

Note: 1. Elementary-Secondary enrollment rate is percentage of people 5-17 years old.
 2. Full-time College enrollment rate is for school year ending in June the following year.

Population Projection 2000 - 2025					
	White	Black	Native Am	Asia	Total
00	69%	29%	0.2%	2.0%	7,874,792
05	68%	30%	0.2%	2.0%	8,412,686
10	67%	31%	0.2%	2.1%	8,823,902
15	66%	32%	0.2%	2.2%	9,199,751
20	65%	33%	0.2%	2.4%	9,551,672
25	64%	34%	0.2%	2.5%	9,869,427

Population of Counties in the GPC Service Region 2000	
Cherokee	141,903
Clarke	101,489
Clayton	236,517
Cobb	607,751
DeKalb	665,865
Douglas	92,174
Fayette	91,263
Forsyth	98,407
Fulton	816,006
Gwinnett	588,448
Henry	119,341
Newton	62,001
Rockdale	70,111
Total Population of the Region	3,691,276

Sources: 1. U.S. Census Bureau 2000, various publications, except population projection
 2. Selig Center, University of Georgia, *Projected Population by Race, Georgia, 1995-2025*

*Note: The percentages may not add to 100% because of multiple reporting.

A Directory for Georgia Perimeter College

GPC District Offices

VP Academic and Student Affairs	404-244-2371
Accounting	404-244-2269
Admissions and Records	404-299-4564
Alumni Relations	404-244-5704
Athletics	770-551-3196
Continuing and Corporate Education	404-298-4903
Disability Services	404-299-4038
Distance Learning	404-294-3494
Financial Aid	404-299-4006
Human Resources	404-244-5934
ID Card Services	404-294-3597
International Center	404-298-4830
Institutional Research and Planning	404-244-2261
Public Relations	404-244-2265
Recruitment and Retention	404-299-4078
Student Accounts	404-244-5020

GPC Campus Offices

Clarkston	
Registrar and Admissions	404-299-4035
Financial Aid	404-299-4006
Student Accounts	404-299-4030

GPC Campus Offices

Decatur	
Registrar and Admissions	404-244-5036
Student Accounts	404-244-5020
Financial Aid	404-244-2983
Dunwoody/Alpharetta	
Registrar and Admissions	770-551-3010
Student Accounts	770-551-3023
Financial Aid	770-551-7287
Lawrenceville	
Registrar and Admissions	770-339-2382
Student Accounts	770-339-2302
Financial Aid	770-339-5203
Rockdale	
Advising and Counseling	770-785-6970
Student Accounts	770-785-6990