

# Preface

---

The 2001-2002 edition of *The Georgia Perimeter College Fact Book* provides a comprehensive statistical picture of Georgia Perimeter College. This book presents enrollment, faculty and staff data, financial reports, and other information for Georgia Perimeter College and its campuses at Clarkston, Decatur, Dunwoody, Lawrenceville, and the Alpharetta and Rockdale Centers.

All enrollment data are based on students enrolled on October 15, 2001. All administrative and academic information is based on data as of October 31, 2001, except organizational charts that reflect the most recent changes and are effective July 1, 2002. All fiscal year data are collected as of June 30, 2001. The definitions and guidelines used in this book are consistent with the Integrated Post-secondary Education Data System (IPEDS) and policies of the Board of Regents of the University System of Georgia. All the data sources, unless noted, are from GPC's Institutional Research and Planning Office.

The *Georgia Perimeter College Fact Book 2001-2002* is a publication produced by the Office of Institutional Research & Planning. It is also a product of cooperative efforts of the many offices and campuses of GPC. Mr. Ron Carruth, Executive Vice President of Finance and Administration, gave invaluable direction and support to the whole process. Bari Jackson, Phyllis Montgomery, Dr. Patti Gregg, and Lynn Parker provided thorough proofreading of the Fact Book. Their efforts are gratefully acknowledged.

The electronic version of the *Fact Book* is accessible to the public on the World Wide Web via Georgia Perimeter College's home page at [www.gpc.edu](http://www.gpc.edu) or directly at <http://www.gpc.edu/~irp/>.

Inquiries and comments regarding this document are sincerely welcome and may be directed to the Institutional Research and Planning Office (College District Offices, 3251 Panthersville Road, Decatur, GA 30034; Phone: 404-244-2261; Fax: 404-244-2373; E-mail at [lfincher@gpc.edu](mailto:lfincher@gpc.edu)).

Kuan R. Yang, Ph.D., Director, Institutional Research and Planning

Angela Banks-Mitchell, Information Analyst, Institutional Research and Planning

Lashay Fincher, Administrative Secretary, Institutional Research and Planning

# President's Message

---

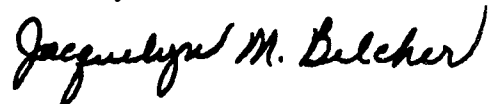
Welcome to The *Georgia Perimeter College Fact Book 2001-2002*. In this book we have outlined facts and figures to help you understand the integral role Georgia Perimeter College plays in the lives of the people we serve. You will find information that focuses especially on the academic programs, students, and the services we provide beyond the classroom.

Upholding our proud pledge of "Students First," Georgia Perimeter College has become a premier institution of higher learning in metropolitan Atlanta, well known for being student-centered and student-friendly. Our pledge is further reflected in our commitment to diversity. As the largest associate-degree granting institution of the University System of Georgia, the College serves students from 14 counties in Georgia and 139 different countries.

This year's *Fact Book* contains more than just trends; it assembles the big picture as well as snapshots of Georgia Perimeter College's continued excellence in higher education. Through our students, faculty and staff, the expression of data in this publication is given life all during the year in our classrooms, our offices and across our grounds. We form a community of learning, which enriches all our lives and ensures a quality environment for all of us.

Congratulations to all of you who made the accomplishments in this book possible.

Sincerely,



Dr. Jacquelyn M. Belcher  
President, Georgia Perimeter College

# Table of Contents

---

Preface	i	Degrees Awarded Summary, FY 1995-2001	26
President's Message	ii	Degrees Awarded by Campus, FY 2001	27
Table of Contents	iii	Degrees Awarded by Ethnicity and Gender, FY 2001	28
		Degrees Awarded by Major, FY 2001	29
<b>ORGANIZATION</b>	<b>1</b>	Course Profiles, Fall 2001	30
Mission Statement	3	Continuing and Corporate Education Fall 1997-2001	31
History	5		
Board of Regents	6	<b>STUDENTS</b>	<b>33</b>
Chief Executive Officer, Vice Presidents, and Provosts	7	Enrollment Summary I – All Campuses, Fall 95-01	35
Administrative Organizational Chart	8	Enrollment Summary II – All Campuses, Fall 95-01	36
College Executive Team	9	Enrollment of GPC Clarkston, Fall 95-01	37
Financial and Administrative Affairs Team	10	Enrollment of GPC Clarkston, Fall 95-01 (Continued)	38
Educational Affairs Team	11	Enrollment of GPC Decatur, Fall 95-01	39
Advancement & External Affairs Team	12	Enrollment of GPC Decatur, Fall 95-01 (Continued)	40
Clarkston Campus Team	13	Enrollment of GPC Dunwoody, Fall 95-01	41
Decatur Campus/Rockdale Center Team	14	Enrollment of GPC Dunwoody, Fall 95-01 (Continued)	42
Dunwoody Campus Team	15	Enrollment of GPC Lawrenceville, Fall 95-01	43
Lawrenceville Campus Team	16	Enrollment of GPC Lawrenceville, Fall 95-01 (Continued)	44
Geographic Locations of the GPC Campuses	17	Enrollment of GPC Rockdale, Fall 95-01	45
Maps of Alpharetta Center and Clarkston Campus	18	Enrollment of GPC Rockdale, Fall 95-01 (Continued)	46
Maps of Decatur and Dunwoody Campuses	19	Enrollment of GPC Off Campus/Distance Education I, Fall 96-01	47
Maps of Lawrenceville Campus & Rockdale Center	20	Enrollment of GPC Off Campus/Distance Education II, Fall 96-01 (Continued)	48
GPC Off-Campus Sites for Fall 2001	21	Enrollment of GPC by Age Group, Fall 1997-2001; and by County, Fall 2001	49
<b>ACADEMICS</b>	<b>23</b>		
Academic Programs Offered, FY 2002	25		

## Table of Contents (Continued)

---

High Schools Attended by 90 or More, Fall 00-01	50	<b>EMPLOYEES</b>	<b>69</b>
International Student Enrollment I, Fall 1998-2001	51		
International Student Enrollment II, Fall 1998-2001	52	Full-Time Employees by EEO Classification, FY 1998-2002	71
Retention Rate, Fall 99-00; Enrollment by Class Size FY 95-01	53	Corps of Instruction-All Campuses, Fall 2001	72
Student Financial Aid Awarded by Source, FY 97-01	54	Highest Earned Degree, Full-Time Teaching Faculty, Fall 2001	73
Entering Freshman SAT, FY 96-00; Regents' Test, FY 99 - 00	55	Faculty Distribution by Rank and Race, Fall 1997-01	74
Applications Received, Fall 1997-2001	56	Faculty Distribution by Tenure Status, Fall 1997-01	75
Testing Activities, FY 1997-2001	56	Tenure Status by Academic Area, Gender, & Race, Fall 2001	76
Four-year Associate or Transfer Rates, FY 1999	57	Faculty Workload by Area, Fall 2000 vs 2001; By Campus, Fall 2001	77
Comparison with Other USG 2-Year Colleges, Fall 2001	58		
Athletics, FY 2001	59	<b>QUICK REFERENCES FOR GPC</b>	<b>79</b>
Students with Disabilities, from 98-99 to 01-02	60		
<b>FUNDING AND FACILITIES</b>	<b>61</b>	Quick Reference I for Georgia Perimeter College	81
Student Tuition and Fees, FY 2001-2002	63	Quick Reference II for Georgia Perimeter College	82
Revenues and Expenditures Per Student, FY 1998-2002	64	A Directory for Georgia Perimeter College	83
Budget Allocations, FY 1998-2002	65		
Library Collections, FY 1997-01	66		
Classrooms in Use by Campus, Day, and Hour, Fall 2001	67		
Buildings, Improvement & Renovations, FY 01-02	68		



# Organization

---



# Mission Statement

---

A community committed to learning and to becoming a preeminent associate degree-granting institution, the faculty, staff, administrators and students of Georgia Perimeter College share the following aspirations:

- To gain national recognition as a community of learners
- To assume a national leadership role in developing creative, technologically-advanced academic and student services programs
- To serve as a model for other institutions in developing collaborative partnerships to deliver public services, technical assistance, lifelong learning and economic development training

A regional, multi-campus unit of the University System of Georgia, Georgia Perimeter College strives to meet the changing expectations of our diverse collegiate and community constituencies by providing effective, innovative, lifelong educational opportunities. We are committed to diversity, continuous improvement, high academic standards and the efficient use of resources. In decision-making at all levels, the enhancement of our students' lives is our first priority.

Georgia Perimeter College, a nonresidential institution, serves diverse populations of traditional and nontraditional students in Greater Metropolitan Atlanta.

Placing learning first, we provide accessible and affordable high quality undergraduate credit and non-credit programs for students seeking to complete an associate degree, transfer to a senior college or university, prepare for immediate entry into a career, pursue personal goals or enhance current workplace skills. Our curriculum specializes in liberal arts and professional preparation and promotes international and intercultural understanding. We also serve the broader community as an educational, cultural and economic resource.

Our academic programs and student support services focus on careful assessment of our learners' abilities, achievements and needs; accommodations of their special requirements and resources; and guidance in the development and realization of their expectations and goals. We thus offer specialized sequences of courses and support programs that promote academic and personal success for students of varying levels of academic preparation. We encourage excellence in teaching, provide a technologically advanced learning environment, support innovative strategies for meeting the learning styles of all students and promote learning by engaging students actively and collaboratively.

## Mission Statement (Continued)

---

In meeting the educational needs of the citizens of Georgia for the 21<sup>st</sup> century, we share with all other institutions in the University System of Georgia the following characteristics:

- A supportive campus climate, necessary services and leadership and development opportunities, all to educate the whole person and meet the needs of students, faculty and staff
- Cultural, ethnic, racial and gender diversity in the faculty, staff and student body, supported by practices and programs that embody the idea of an open, democratic and global society
- Technology to advance educational purposes, including instructional technology, student support services and distance education
- Collaborative relationships with other System institutions, State agencies, local schools and technical institutes, and business and industry, sharing physical, human, information and other resources to expand and enhance programs and services available to the citizens of Georgia.

Georgia Perimeter College shares the following commitments to the citizens of Georgia with other associate-degree level colleges of the University System of Georgia:

- A commitment to excellence and responsiveness within a scope of influence defined by the needs of the local area and by particularly outstanding programs or distinctive characteristics that have a magnet effect throughout the region or state
- A commitment to a teaching/learning environment, both inside and outside the classroom, that sustains institutional excellence, functions to provide University System access for a diverse student body and promotes high levels of student learning
- A commitment to a high quality general education program that supports a variety of well-chosen associate programs and prepares students for transfer to baccalaureate programs, learning support programs designed to ensure access and opportunity for a diverse student body and a limited number of certificate or other career programs to complement neighboring technical institute programs
- A commitment to public service, continuing education, technical assistance and economic development activities that address the needs, improve the quality of life and raise the educational level within the College's scope of influence
- A commitment to scholarship and creative work for the specific purposes of supporting instructional effectiveness and enhancing institutionally relevant faculty qualifications.

# History

---

Founded by the citizens of DeKalb County and the DeKalb Board of Education under the Junior College Act of 1958, Georgia Perimeter College opened in 1964 as the only public junior college in the state supported and controlled by a local Board of Education. It was established in order that any resident of the DeKalb School District who held a high school diploma or its equivalent and who desired to seek two years of post-secondary education might have the opportunity to do so.

The Clarkston Campus opened in 1964 serving as the main and also the first campus of the College. The College's Decatur Campus opened in 1972. Also beginning in 1972, students enrolled in DeKalb Area Technical School were able to enroll dually in vocational and collegiate programs, and the College was designated DeKalb Community College. As growth continued both for DeKalb County and the College, the Dunwoody Campus was added and began operation in 1979. Georgia Perimeter College has pioneered in Georgia in open-door admissions, personalized approaches to instruction and community-related curricula and activities. The College's curricula feature transfer, developmental, career, and continuing education programs. Associate degrees are awarded to graduates who complete the two-year transfer and career programs. The College's academic offerings correspond with curricula content and

requirements of the University System of Georgia. The College also serves as a community cultural center for the performing arts in music and drama.

In 1985, DeKalb Vocational-Technical School was placed under the governance of a state board for vocational-technical schools. Students enrolled in specific Associate in Applied Science degree programs continue, however, to enroll dually in the College and technical school, now known as DeKalb Technical College.

Designed to be readily responsive to the educational needs of the community, Georgia Perimeter College began offering dual programs in cooperation with Gwinnett Technical College in the fall of 1987. In addition, GPC offers at its Lawrenceville Campus a broad range of courses to students seeking Associate in Arts or Associate in Science degrees. In Spring 1993, GPC, in cooperation with Clayton State College, DeKalb Technical College, and Rockdale County Public Schools, formed the Rockdale Center for Higher Education. In June 2000 and in partnership with Georgia State University, GPC established its sixth location - the Alpharetta Center. Both the Rockdale and Alpharetta centers offer freshman and sophomore level general education classes.

Source: Georgia Perimeter College's Web page, [www.gpc.edu/~acadaff/cat](http://www.gpc.edu/~acadaff/cat)

# Board of Regents

---

The Board of Regents (BOR) of the University System of Georgia (USG) is composed of 16 members appointed by the Governor and confirmed by the Senate for seven-year terms. One member is appointed from each of the 11 congressional districts, and five are appointed from the state at large. The BOR exercises broad jurisdiction over all institutions of USG and establishes policies and procedures under which they operate. The BOR receives all state appropriations for the USG and allocates these appropriations to the institutions and institution-related agencies. While the BOR engages in both policy-making and administrative functions, each unit of the System has a high degree of academic and administrative autonomy.

The System currently includes 35 institutions: four research universities, two regional

universities, 11 state universities, two state colleges, 15 two-year colleges and one independent research unit. These institutions are both distinctive and interrelated. They are geographically dispersed so that approximately 96 percent of the people in Georgia reside within 35 miles of at least one university or college.

Georgia Perimeter College is an associate degree-granting college of the University System of Georgia.

## Members and Terms of the BOR

- **Carter, Hugh A., Jr.**  
(08/08/00-01/01/09)
- **Cater, (Mr.) Connie**  
(06/18/99-01/01/06)
- **Cleveland, William H.**  
(10/04/01-01/01/09)
- **Coles, Michael J.**  
(01/09/01-01/01/08)
- **Harris, Joe Frank (Chair)**  
(06/18/99-01/01/06)

- **Howell, Hilton H., Jr.**  
(06/15/98-01/01/04)
- **Hunt, John**  
(01/07/97-01/01/04)
- **Leebern, Donald M., Jr.**  
(01/01/98-01/05/05)
- **Magill, Allene H.**  
(02/13/01-01/01/08)
- **McMillan, Elridge W.**  
(01/01/96-01/01/03)
- **NeSmith, Martin W.**  
(06/18/99-01/01/06)
- **Rodwell, Wanda Yancey**  
(03/29/02-01/01/05)
- **Shelnut, J. Timothy**  
(08/25/00-01/01/07)
- **White, Glenn S.**  
(01/01/98-01/01/05)
- **Wooten, Joel O., Jr.**  
(06/18/99-01/01/06)
- **Yancey, James D. (V. Chair)**  
(01/01/00-01/01/07)

## Chancellor of the USG

- **Dr. Thomas C. Meridith, Ed. D.**  
(Chancellor)



# Chief Executive Officer, Vice Presidents, and Provosts

---

## Chief Executive Officer

The President of Georgia Perimeter College is the chief executive and administrative officer. The President is appointed by the Board of Regents and is directly responsible to the BOR for the conduct of the institution, the development of institutional goals, the formulation of policies, and the overall well being of the College.

### The President of GPC

Dr. Jacquelyn M. Belcher  
1995 - present (5<sup>th</sup> president)

### The Past Presidents of GPC

- 1<sup>st</sup>-Thad W. Hollingsworth (1963-1967)
- 2<sup>nd</sup>-James H. Hinson, Jr. (1967-1977)
- 3<sup>rd</sup>-W. Wayne Scott (1977-1982)
- 4<sup>th</sup>-Marvin Cole (1982-1994)
- Martha Nesbitt (Interim 1994)

## The GPC Logo



## Vice Presidents

Ronald L. Carruth, Executive VP,  
Financial & Administrative  
Affairs

Virginia Michelich, Ph.D., Interim  
VP, Educational Affairs

Felita Williams, Ph.D., VP,  
Advancement and External Affairs

## Provosts

Dennis R. Harkins, Ph.D., Provost,  
Clarkston Campus

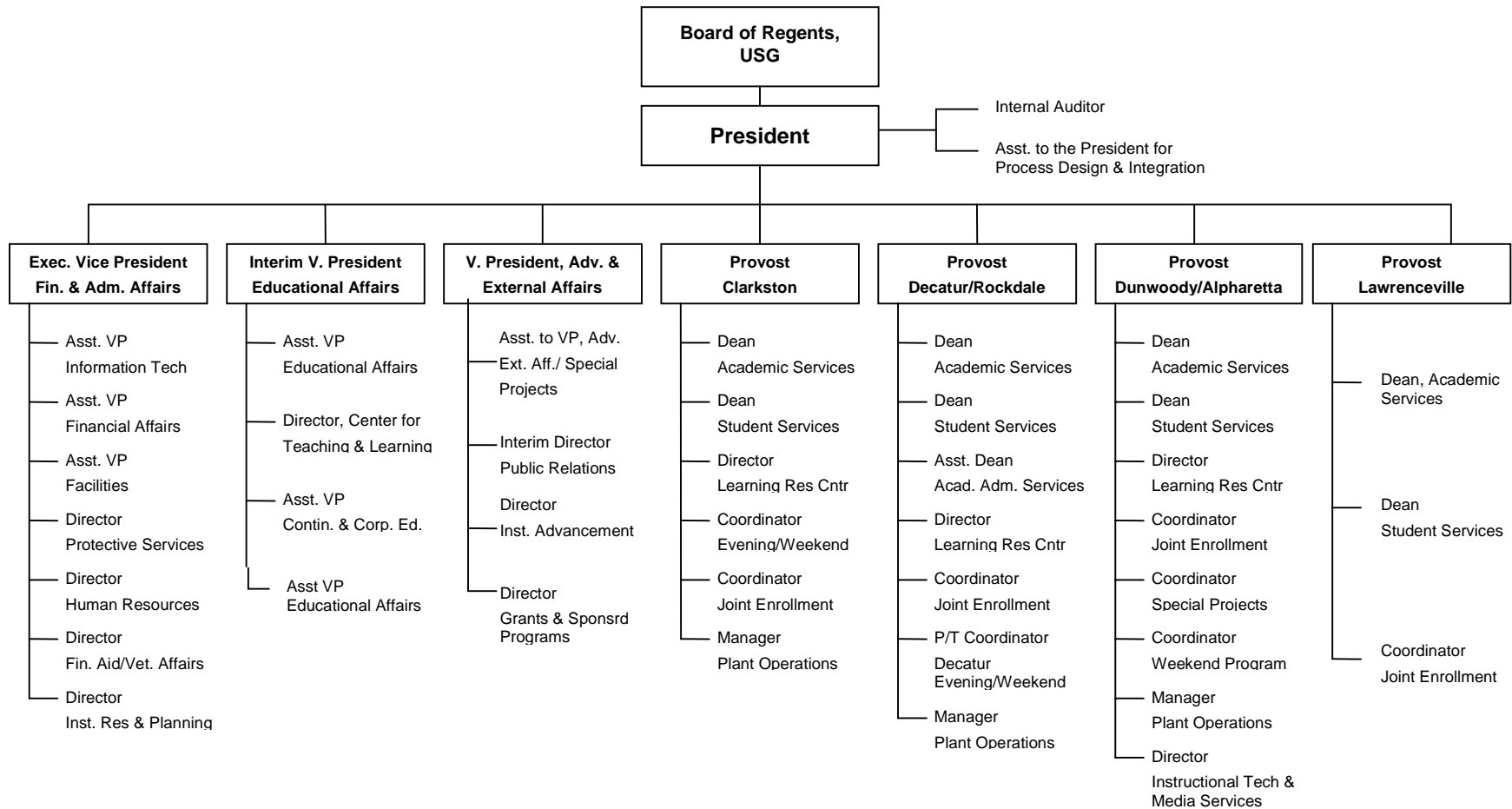
Debra L. McCurdy, Ph.D., Provost,  
Dunwoody Campus/Alpharetta  
Center

Paul Pai, Ed.D., Provost, Decatur  
Campus/Rockdale Center

Sue Henderson, M.Ed., Ph.D.  
Candidate, Provost,  
Lawrenceville Campus



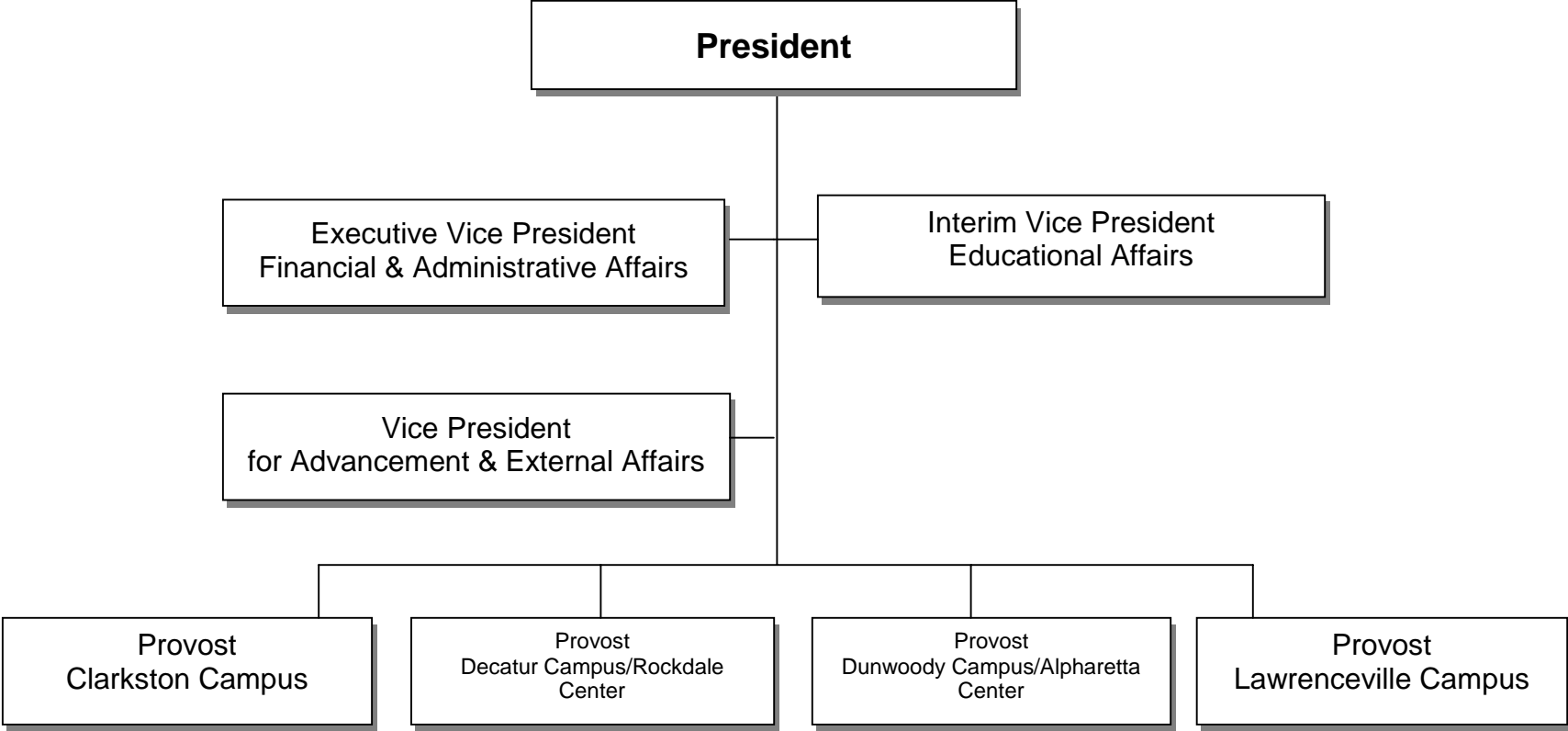
# Administrative Organizational Chart



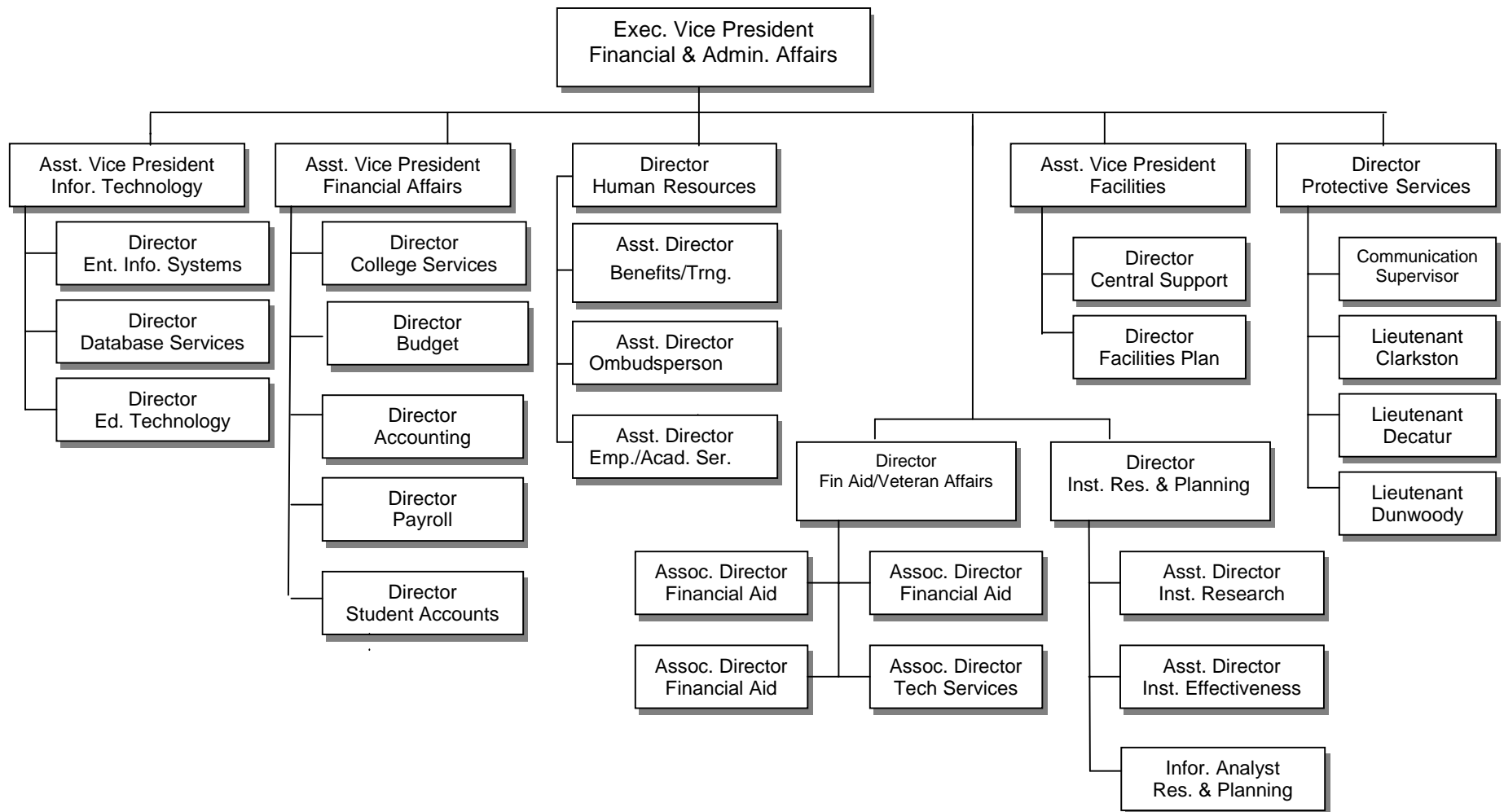
Note: The organizational charts on this page and pages to follow are effective July 1, 2002.

# College Executive Team

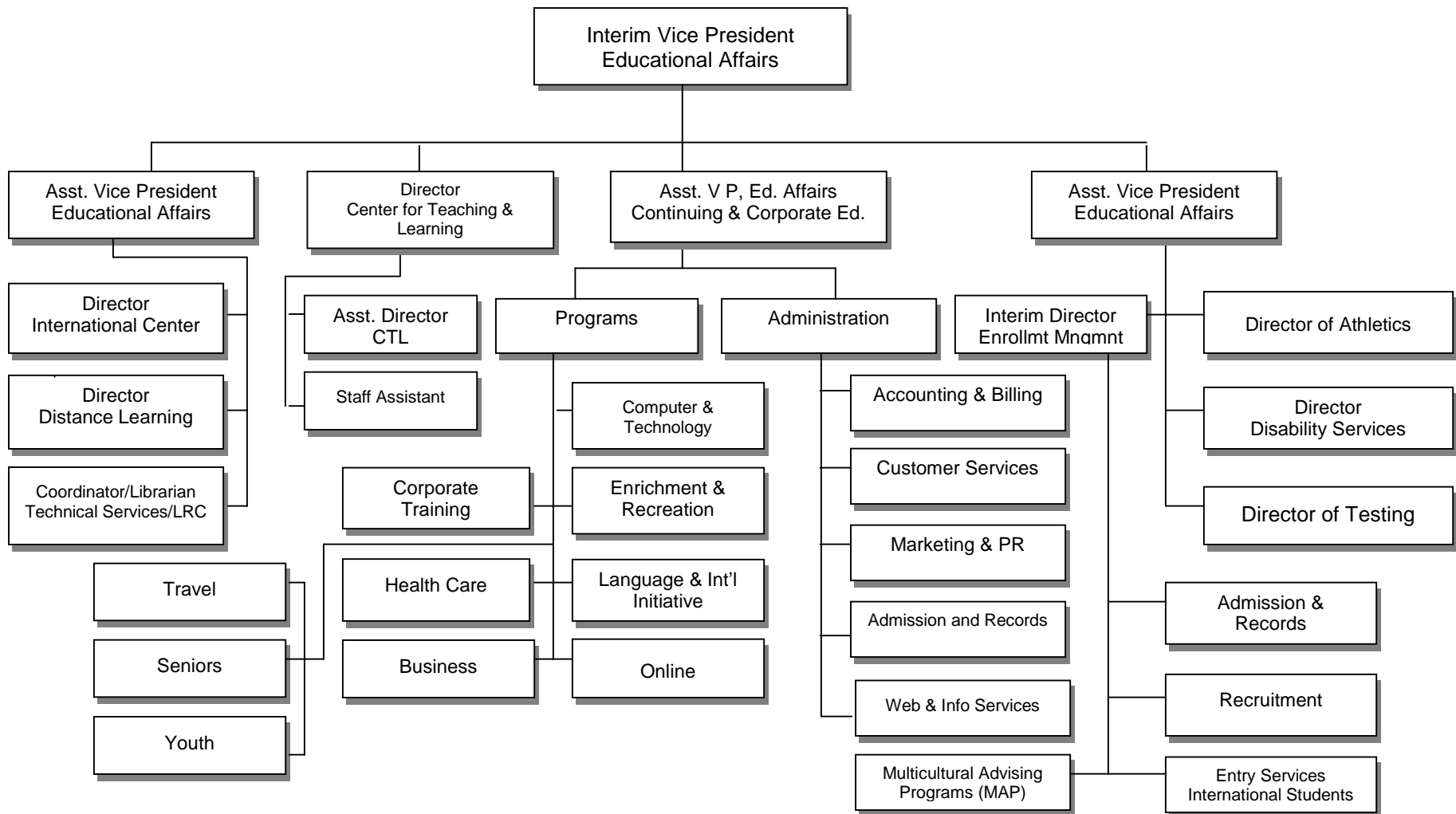
---



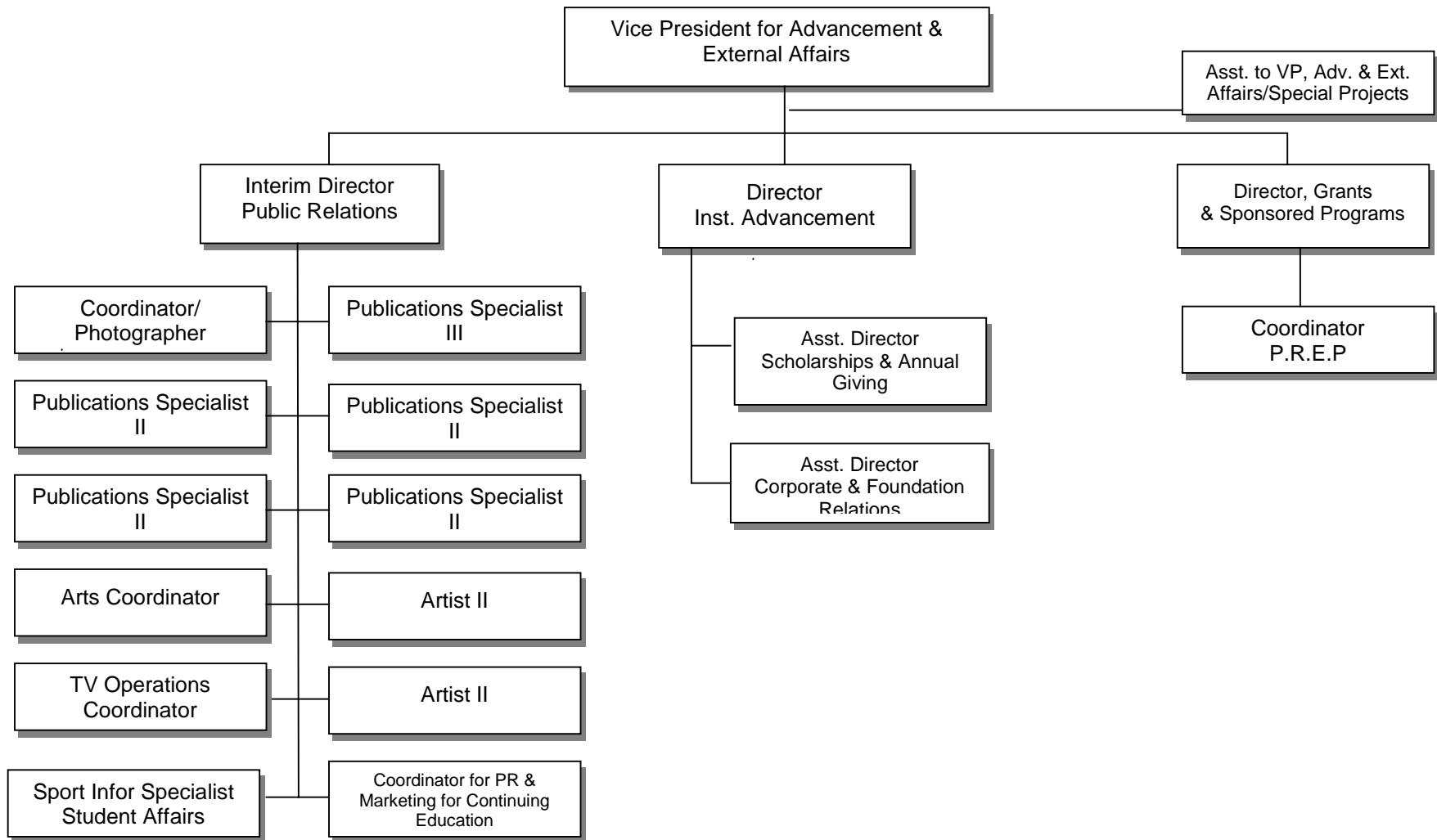
# Financial and Administrative Affairs Team



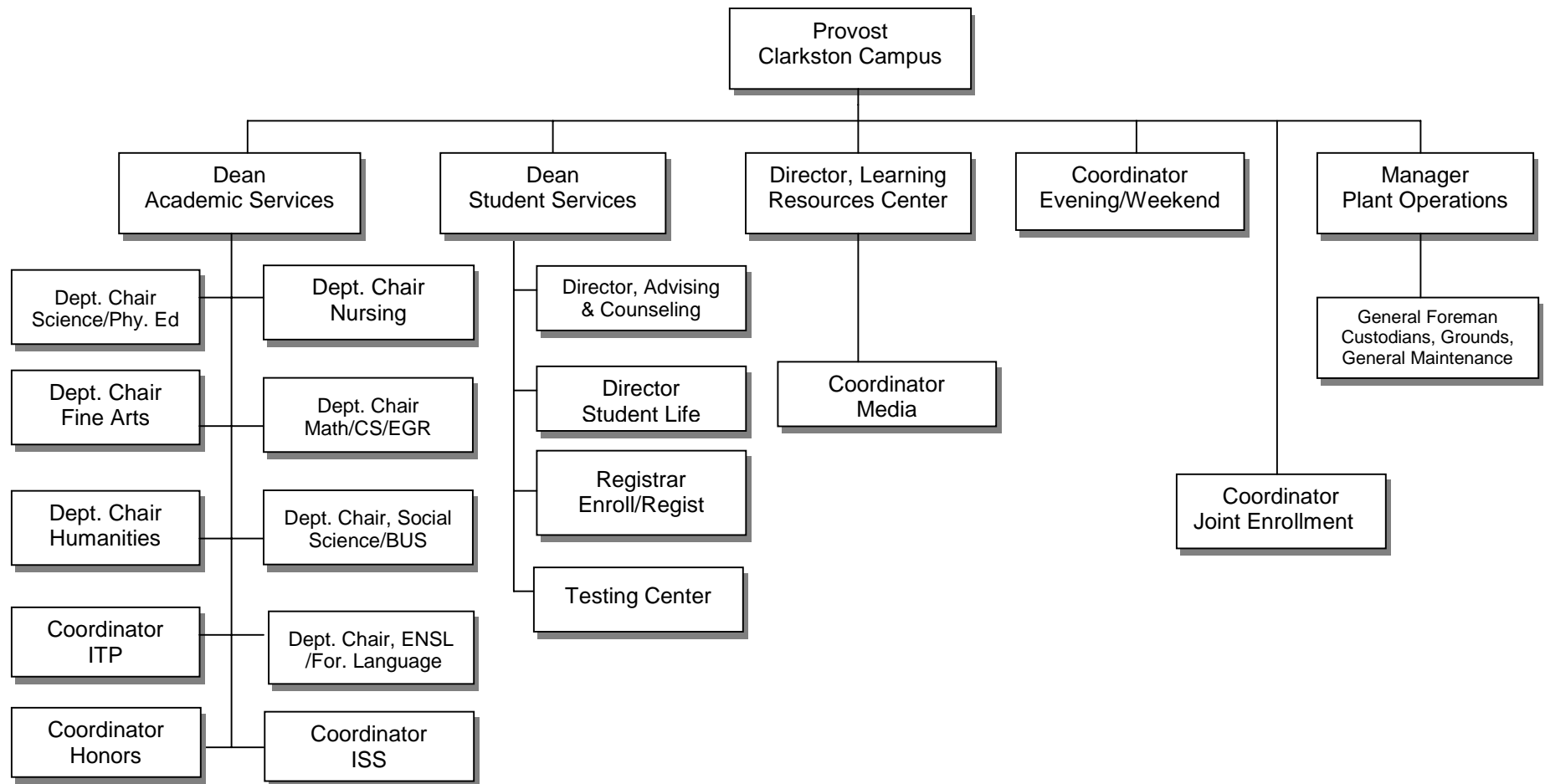
# Educational Affairs Team



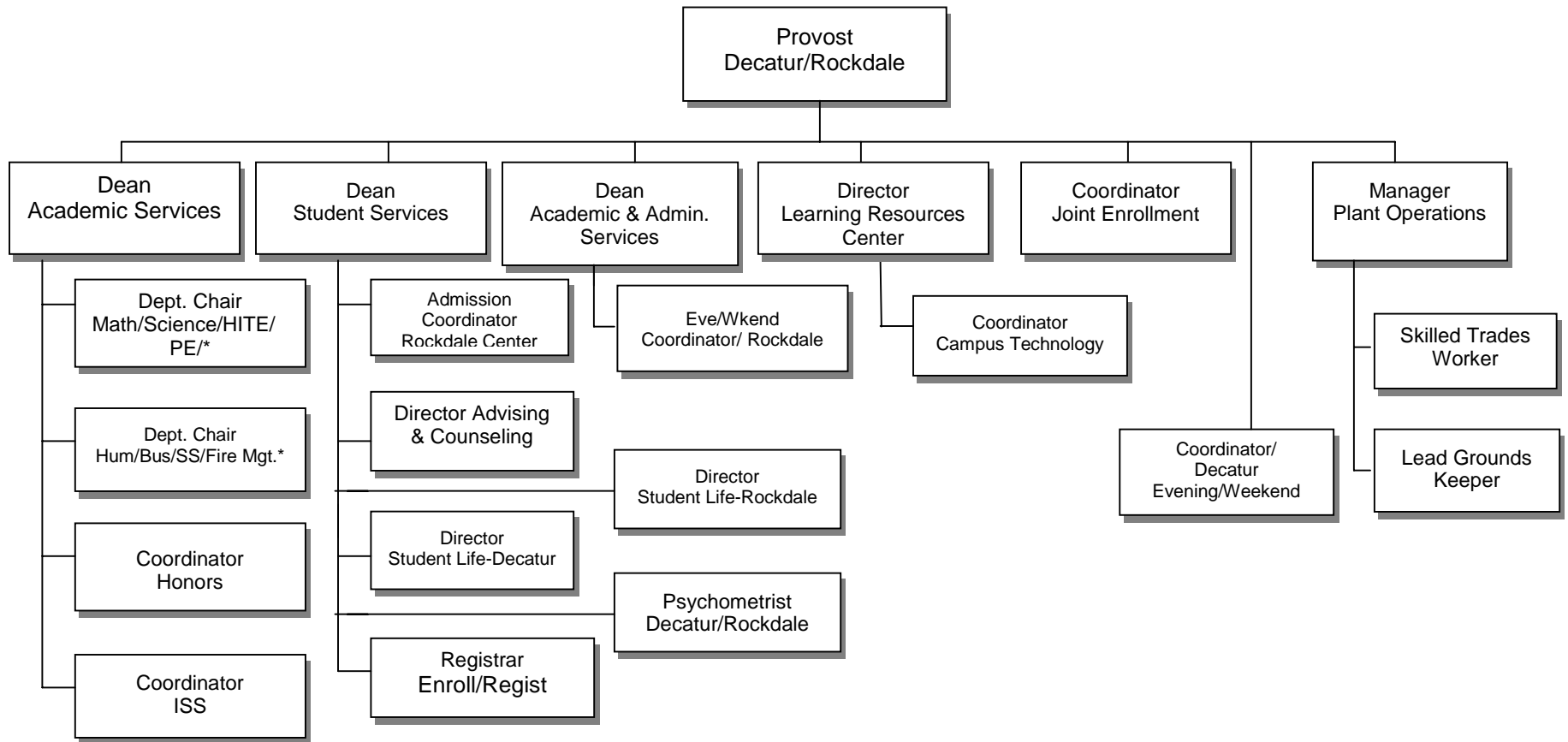
# Advancement and External Affairs Team



# Clarkston Campus Team

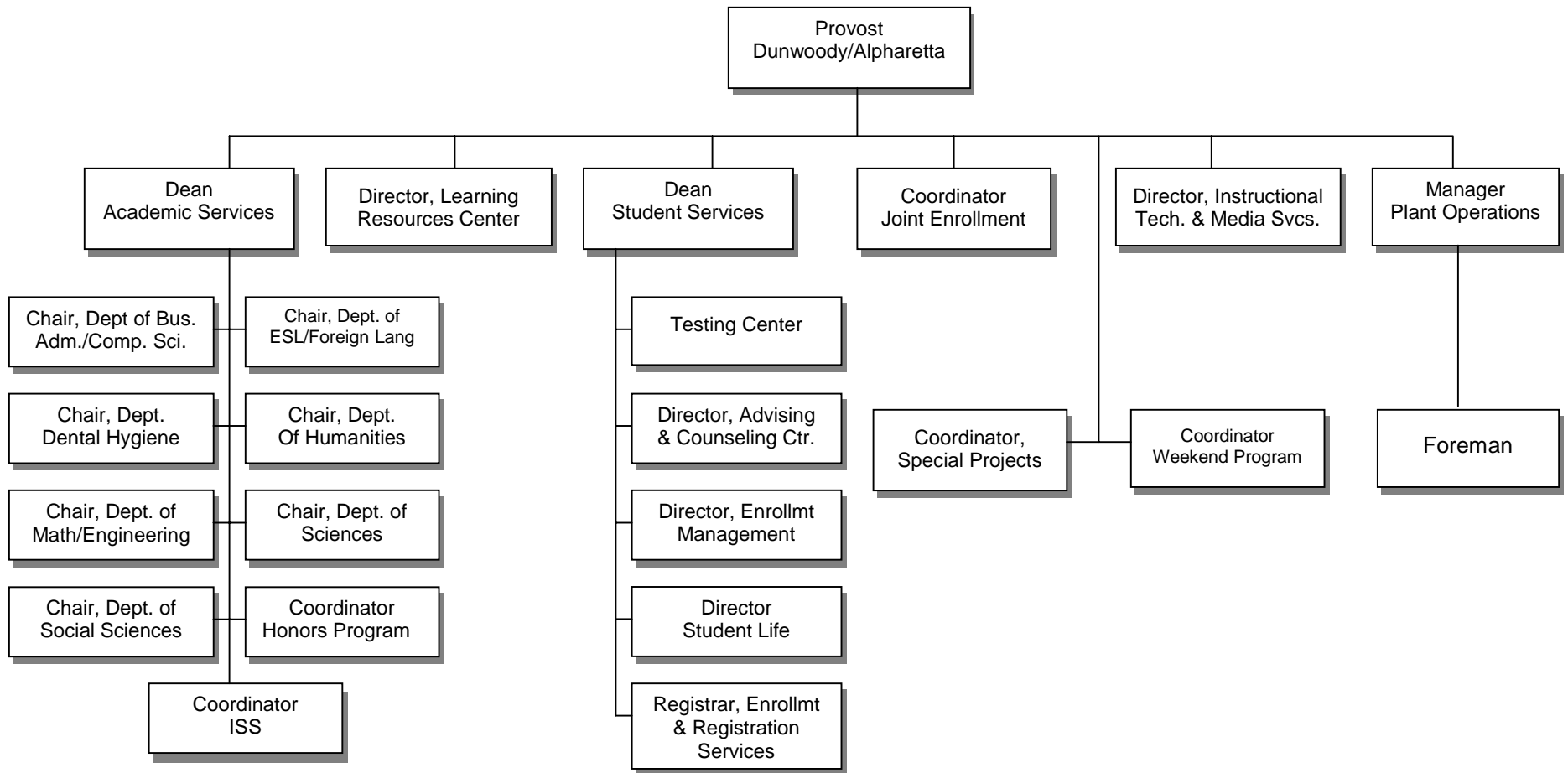


# Decatur Campus/Rockdale Center Team



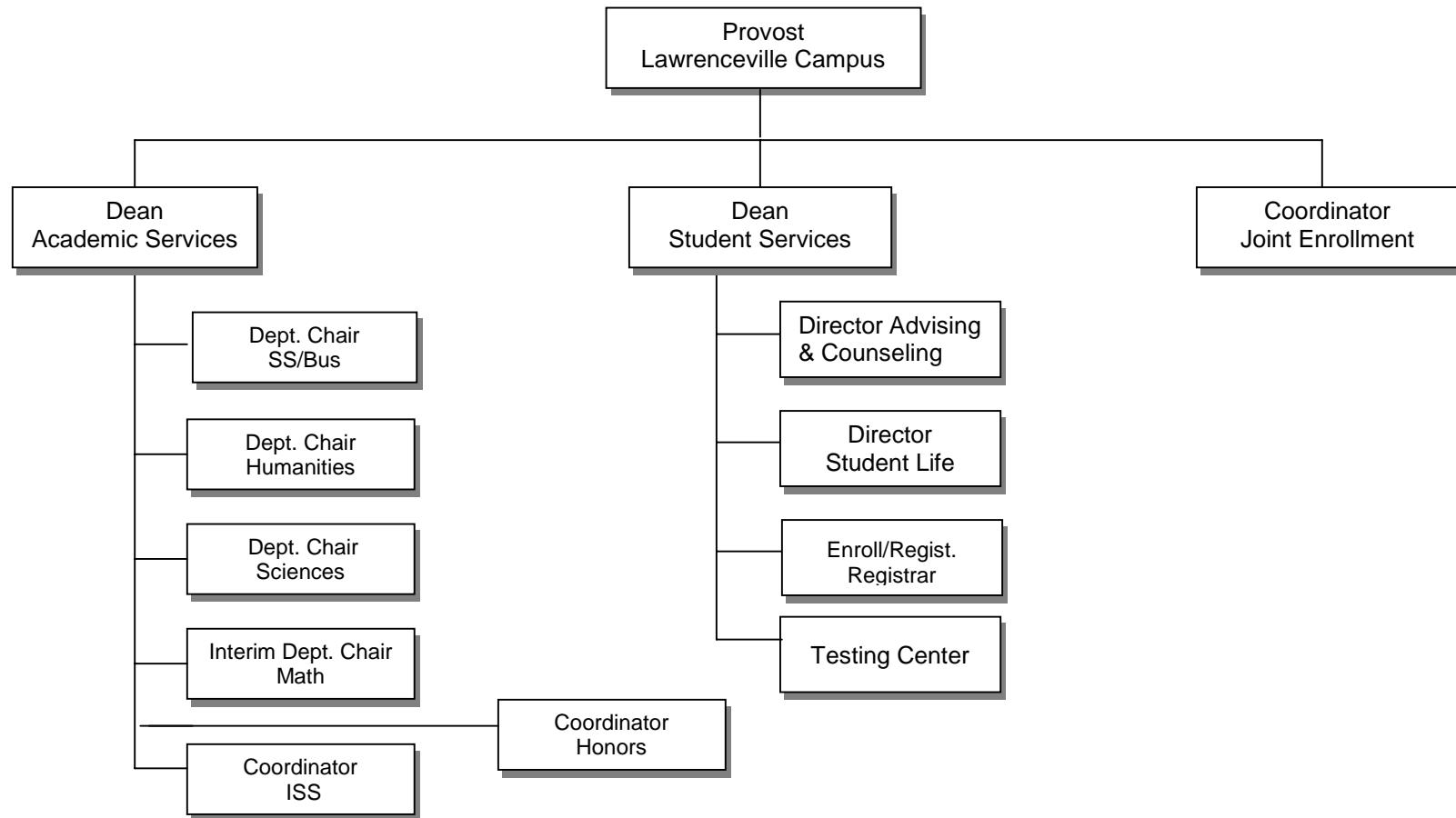
\*Includes the appropriate Learning Support Courses

# Dunwoody Campus Team



# Lawrenceville Campus Team

---



# Geographic Locations of the GPC Campuses

---

Alpharetta Center  
3705 Brookside Pkwy  
Alpharetta, GA 30022

Clarkston Campus  
555 North Indian Creek Dr.  
Clarkston, GA 30021-2361

Decatur Campus  
3251 Panthersville Rd.  
Decatur, GA 30034-3897

Dunwoody Campus  
2101 Womack Rd.  
Dunwoody, GA 30338-4497

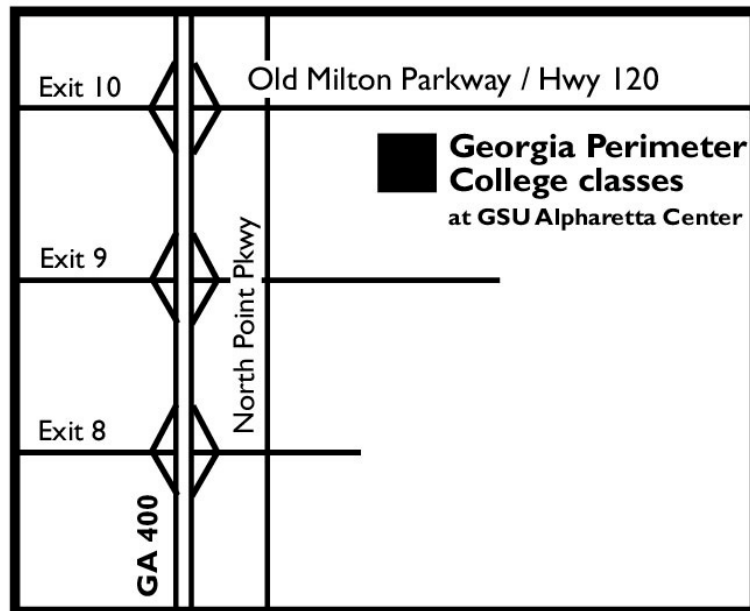
Lawrenceville Campus/Gwinnett University System  
Center  
1000 University Center Lane  
Lawrenceville, GA 30043

Rockdale Center for Higher Education  
1115 West Ave.  
Conyers, GA 30012-9948



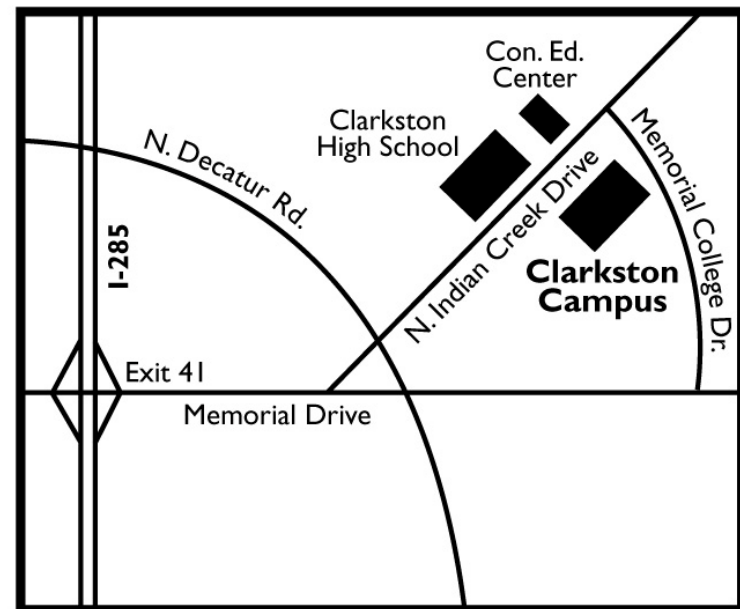
# Maps of Alpharetta Center and Clarkston Campus

Alpharetta Center



**Alpharetta Center**  
3705 Brookside Pkwy  
Alpharetta, GA 30022

Clarkston Campus

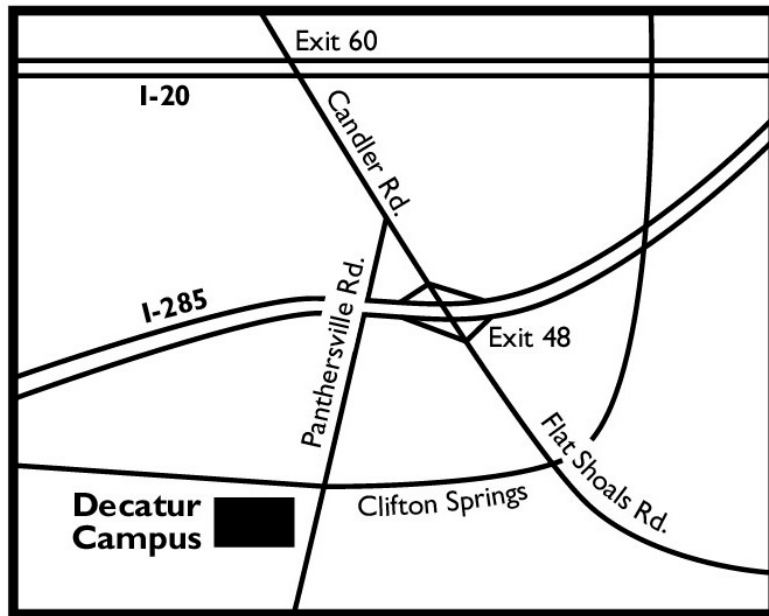


**Clarkston Campus**  
555 North Indian Creek Dr.  
Clarkston, Georgia 30021-2361

# Maps of Decatur and Dunwoody Campuses

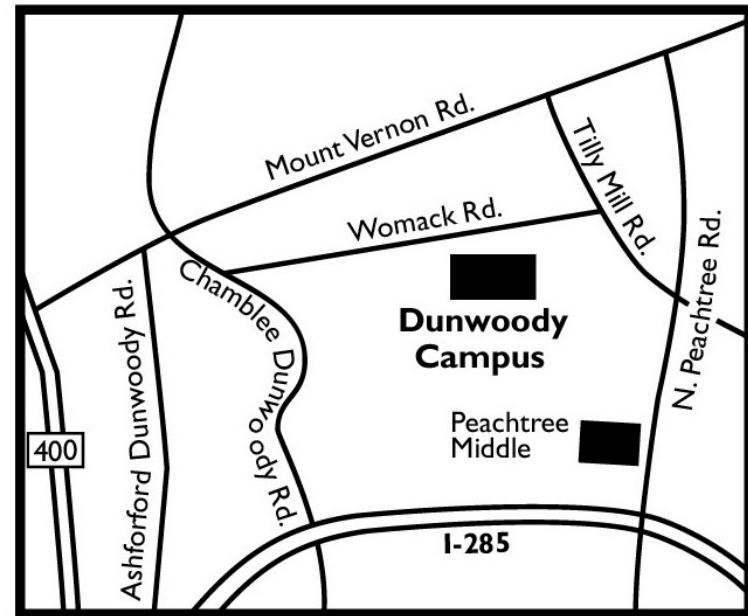
---

Decatur Campus



**Decatur Campus**  
3251 Panthersville Road  
Decatur, Georgia 30034-3897

Dunwoody Campus



**Dunwoody Campus**  
2101 Womack Road  
Dunwoody, Georgia 30338-4497

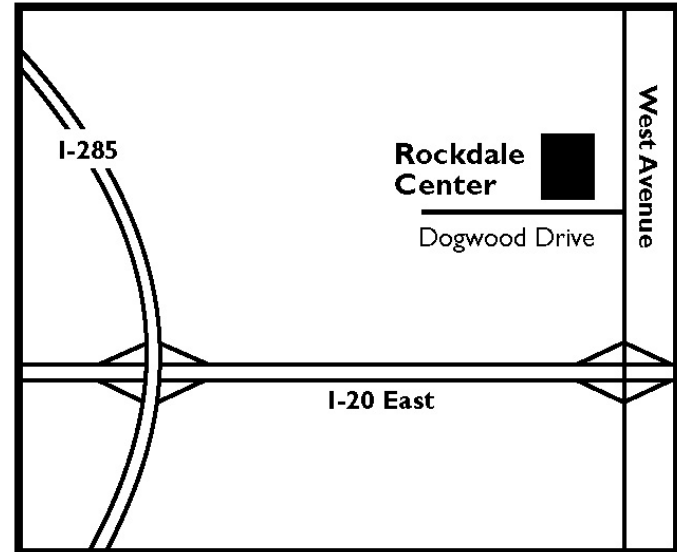
# Maps of Lawrenceville Campus and Rockdale Center

Lawrenceville Campus



**Lawrenceville Campus**  
1000 University Center Lane  
Lawrenceville, Georgia 30043

Rockdale Center



**Rockdale Center for  
Higher Education**  
1115 West Avenue  
Conyers, Georgia 30012

## GPC Off-Campus Sites for Fall 2001

Site Name	City	Country*
AMF Chamblee Lanes	Chamblee	
AMF Stone Mountain Lanes	Stone Mountain	
Brookwood High School	Snellville	
Cedar Grove High School	Ellenwood	
Decatur High School	Decatur	
Douglas County High School	Douglas	
Druid Hills High School	Druid Hills	
Duluth High School	Duluth	
Dunwoody High School	Dunwoody	
Gwinnett Technical College	Lawrenceville	
Heritage High School	Conyers	
Jim Hearn Golf Center	Chamblee	
Meneely Show Horses	Conyers	
Milton High School	Alpharetta	
North Spring High School	Atlanta	
Riverwood High School	Atlanta	
Rockdale County High School	Conyers	
Salem High School	Conyers	
South Carelia Polytechnic Institute, Finland	Imatra	Finland
Southwest DeKalb High School	Decatur	
Temima High School	Atlanta	
US Army Atlanta Recruitment Battalion Headquarters	Smyrna	
USG North Metro Center (Alpharetta Center)	Alpharetta	

\*Note: Site in a foreign country is noted.



# Academics

---



## Academic Programs Offered, FY 2002

---

Anthropology (AA)  
Arts (AA)  
Arts (AS)  
Biology (AA) (M)  
Business Administration (AS)  
Business Management (AAS) 2  
Business and Office Technology (AAS) 1  
Chemistry (AA) (M)  
Computer Information Systems (AAS) 1  
Computer Programming Specialist (AAS) 2  
Computer Science (AS) (M)  
Dental Hygiene (Career) (AS)  
Dental Assisting (AAS) 2  
Early Childhood Care and Education (AAS) 1  
Electronics Technology (AAS) 1  
Engineering (AS) (M)  
English (AA)  
Fire Management (Career) (AAS)  
Foreign Language (AA)  
General Studies (AS)  
Geology (AA) (M)  
Health and Physical Education (AS) 3  
History (AA)  
Industrial Maintenance Technology (AAS) 1  
Internet Web Design (AAS) 2  
Interpreter Training (Career) (AAS)  
Journalism (AA)  
Marketing Management (AAS) 1,2  
Mathematics (AA) (M)

Medical Assisting (AAS) 1,2  
Medical Laboratory Technology (AAS) 1  
Microcomputer Specialist (AAS) 2  
Music (AS)  
Networking Specialist (AAS) 2  
Nursing (Career) (AS)  
Paramedic Technology (AAS) 2  
Philosophy (AA)  
Physical Therapist Assistant (AAS) 2  
Physics (AA) (M)  
Political Science (AA)  
Pre-Dentistry/Pre-Medicine/Pre-Pharmacy (AS) (M)  
Psychology (AA)  
Psychology (AS)  
Radiologic Technology (AAS) 2  
Respiratory Therapy (AAS) 2  
Sociology (AA)  
Surgical Technology (AAS) 1,2  
Teacher Education (AS)  
Theatre (AA)

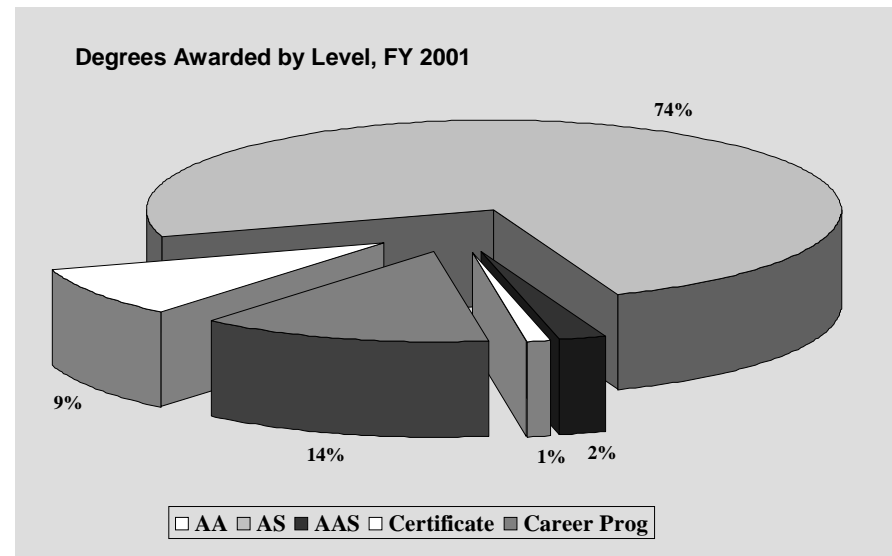
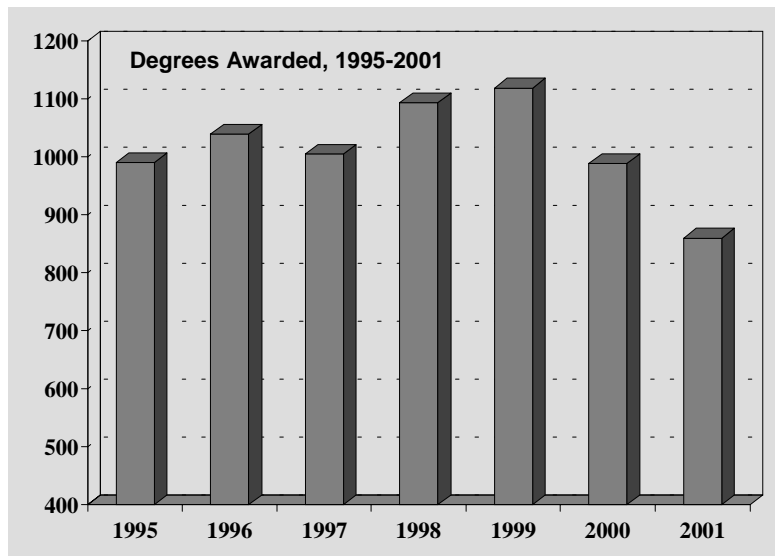
**Note:** AA= Associate of Arts Degree  
AS= Associate of Science Degree  
AAS= Associate of Applied Science Degree  
M= math-based major  
1=Dual Degree program with DeKalb Technical College  
2=Dual Degree program with Gwinnett Technical College  
3=Teacher Option Available



# Degrees Awarded Summary, FY 1995-2001

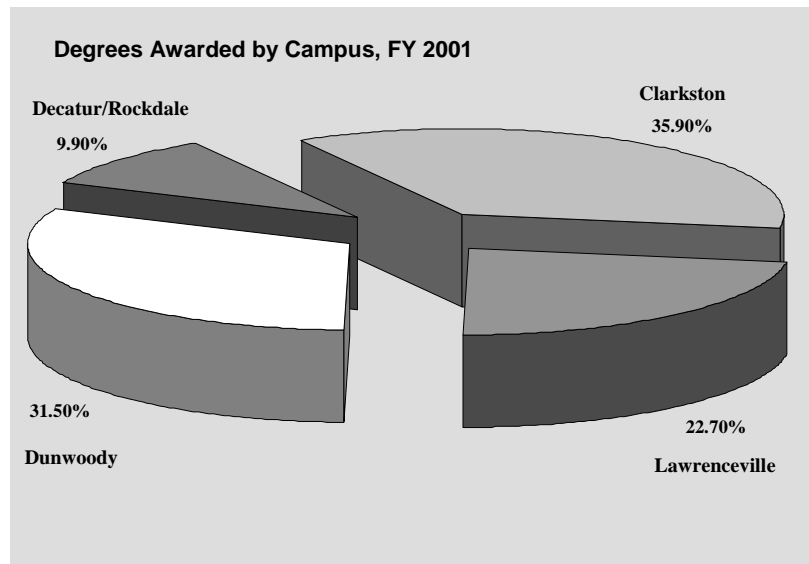
Degrees Awarded by Level and Fiscal Year, GPC, FY 1995-2001

Degree Level	1995	1996	1997	1998	1999	2000	2001
Associate of Arts (Core Curriculum)	77	73	89	88	117	99	80
Associate of Science	662	679	699	787	818	727	635
Associate of Applied Science	69	104	52	34	31	25	19
Certificate	8	3	4	7	12	12	9
Career Program (Dental Hygiene, Nursing)	175	181	161	178	141	126	117
<b>Total</b>	<b>991</b>	<b>1,040</b>	<b>1,005</b>	<b>1,094</b>	<b>1,119</b>	<b>989</b>	<b>860</b>



# Degrees Awarded by Campus, FY 2001

Degrees Awarded by Campus, 2001		
Campus	Degrees Awarded	
	#	%
Clarkston	309	35.9
Lawrenceville	195	22.7
Dunwoody	271	31.5
Decatur/Rockdale	85	9.9
<b>Total</b>	<b>860</b>	<b>100.0</b>

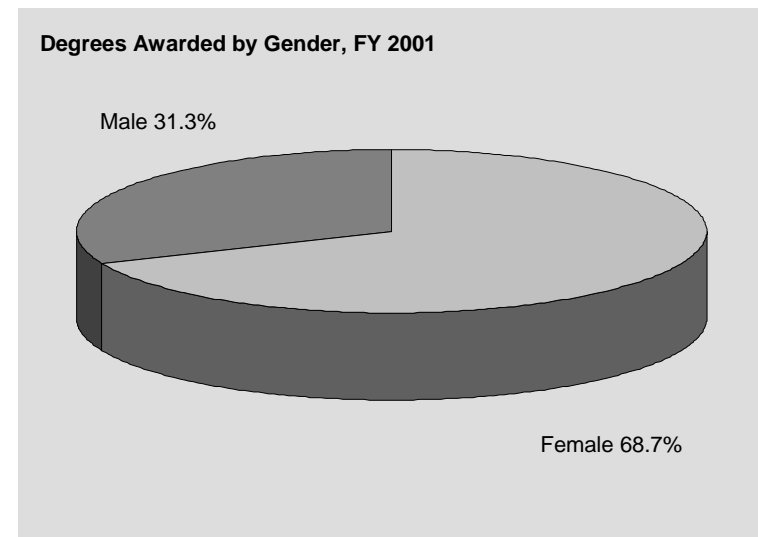
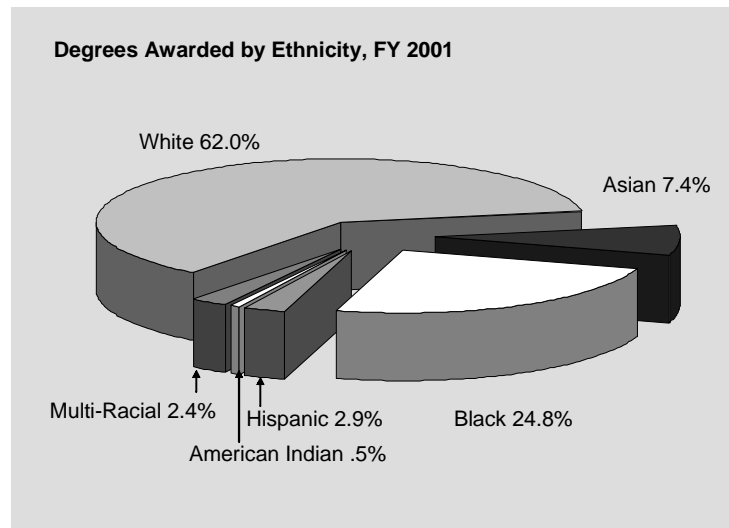


# Degrees Awarded by Ethnicity and Gender, FY 2001

Degrees Awarded by Ethnicity and Gender, Georgia Perimeter College, FY 2001

	Female		Male		Total	
	#	%	#	%	#	%
<b>Asian</b>	39	60.9	25	39.1	64	7.4
<b>Black</b>	158	74.2	55	25.8	213	24.8
<b>Hispanic</b>	21	84.0	4	16.0	25	2.9
<b>Multiracial</b>	15	71.4	6	28.6	21	2.4
<b>Native American</b>	3	75.0	1	25.0	4	.5
<b>White</b>	355	66.6	178	33.4	533	62.0
<b>Grand Total Awarded</b>	<b>591</b>	<b>68.7</b>	<b>269</b>	<b>31.3</b>	<b>860</b>	<b>100.0</b>

**Note:** In each cell, there are two numbers, a number of degrees awarded and its percentage of its group. In the last column, "Total" is the number of degrees awarded of that group, and percentage is its share of the grand total degrees awarded presented in the last row.



## Degrees Awarded by Major, FY 2001

Degree	Major	#
<b>Associate of Arts</b>		
AACC	Anthropology	2
AACC	Art	1
AACC	Biology	3
AACC	Chemistry	4
AACC	Drama-Speech	1
AACC	English	10
AACC	Foreign Language	21
AACC	Geology	1
AACC	History	5
AACC	Journalism	7
AACC	Mathematics	7
AACC	Physics	2
AACC	Political Science	5
AACC	Psychology	10
AACC	Sociology	1
<b>Total</b>		<b>80</b>

Certificate	Major	#
CER 1	Interpreter Trng.	9
<b>Total</b>		<b>9</b>

Degree	Major	#
<b>Associate of Science</b>		
ASCC	Art	11
ASCC	Business Administration	343
ASCC	Business Education	3
ASCC	Computer Science	27
ASCC	Engineering	9
ASCC	General Studies	89
ASCC	Health & Physical Education	3
ASCC	Pre-dentistry	1
ASCC	Pre-medicine	3
ASCC	Pre-pharmacy	5
ASCC	Psychology	35
ASCC	Teacher Education	99
ASCC	Urban Life	7
<b>Total</b>		<b>635</b>

<b>Career Program</b>		
ASDH	Dental Hygiene	20
ASN	Nursing	97
<b>Total</b>		<b>117</b>

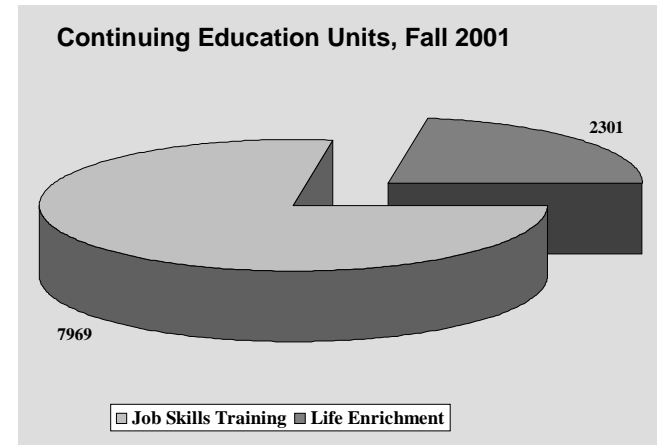
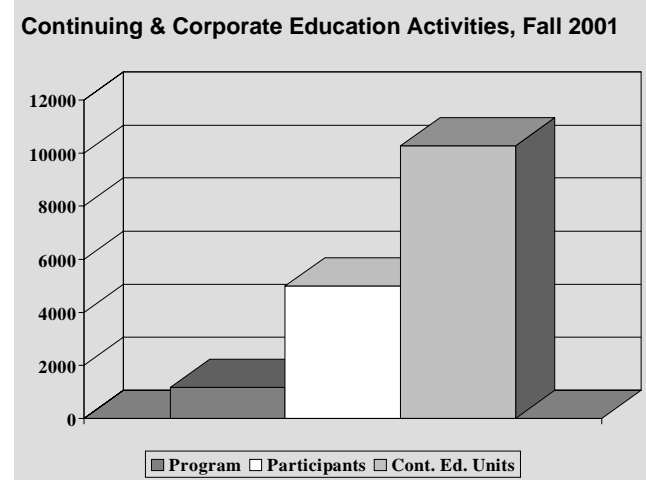
Degree	Major	#
<b>Associate of Applied Science</b>		
AASBA	Computer Operations	1
AASBA	Computer Programming	2
AASBA	Environmental Horticulture	1
AASBA	Electronics Technology	1
AASHC	Physical Therapist Assistant	1
AASFMT	Fire Mgmt. Tech.	3
AASBA	Hotel, Restaurant, & Travel Mgmt.	1
AASBA	Business & Office Technology	1
AASIT	Interpreter Training	2
AASBA	Marketing Mgmt.	2
AASHC	Medical Laboratory Technician	3
AASBA	Microcomputer	1
<b>Total</b>		<b>19</b>

## Course Profiles, Fall 2001

Instructional Program Area	Number of Courses Taught	Number of Sections Taught	Average Section Size	Total Students Enrolled
Business	7	186	25.6	4,763
Dent. Hygiene	8	8	23.5	188
ENSL& Foreign Languages	23	124	19.3	2,394
Fine Arts	28	57	24.0	1,367
Fire Science	2	2	11.5	23
Higher Education Seminars	1	20	20.1	402
Humanities	24	649	20.2	13,093
Interpreter Training	6	19	10.2	193
Mathematics	33	368	25.6	9,423
Nursing	5	6	68.8	413
Physical Education	14	112	21.2	2,374
Science	48	286	22.5	6,434
Social Science	16	311	29.4	9,142
<b>TOTAL</b>	<b>215</b>	<b>2,133</b>	<b>23.5</b>	<b>50,209</b>

# Continuing and Corporate Education, Fall 1997-2001

Category	1997	1998	1999	2000	2001
<b>PROGRAMS</b>					
Job Skills Trng.	911	1,181	906	932	984
Life Enrichment	263	219	112	205	176
<b>Total</b>	<b>1,174</b>	<b>1,400</b>	<b>1,018</b>	<b>1,137</b>	<b>1,160</b>
<b>Participants</b>					
Job Skills Trng.	5,899	5,483	5,065	4,248	4,106
Life Enrichment	2,081	1,349	902	1,042	892
<b>Total</b>	<b>7,980</b>	<b>6,832</b>	<b>5,967</b>	<b>5,290</b>	<b>4,998</b>
<b>Continuing Education Units (CEU)</b>					
Job Skills Trng.	11,836	10,216	8,959	7,451	7,969
Life Enrichment	1,813	1,804	906	1,029	2,301
<b>Total</b>	<b>13,649</b>	<b>12,020</b>	<b>9,865</b>	<b>8,480</b>	<b>10,271</b>
EFT	227	200	164	141	171





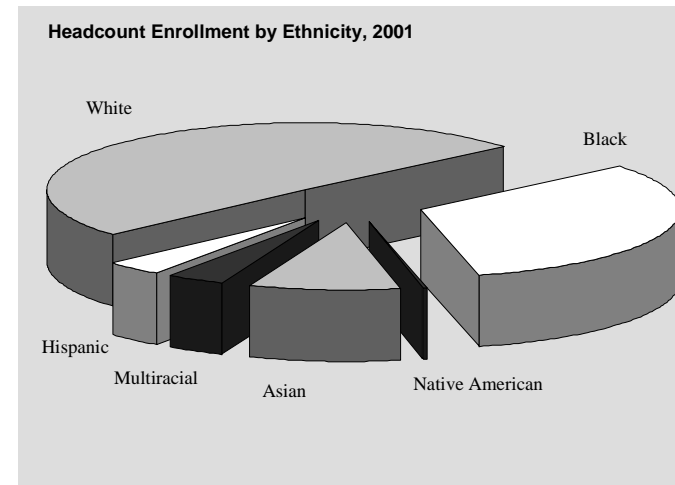
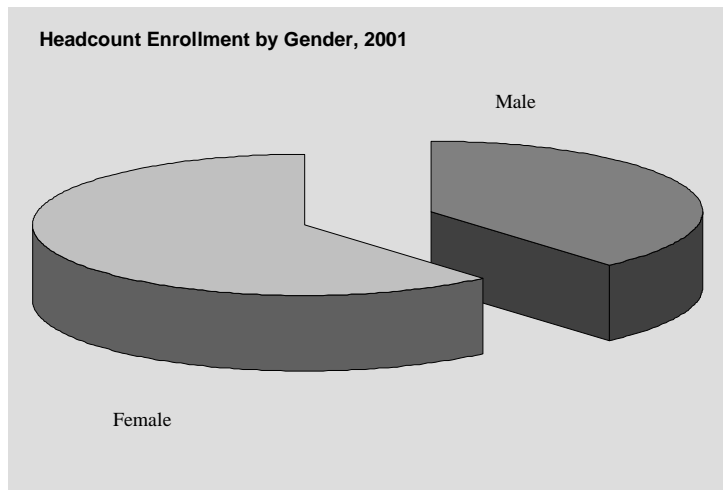
# Students

---



# Enrollment Summary I - GPC All Campuses, Fall 1995-2001

<b>On-Campus Student Enrollment</b>								
	<b>1995</b>	<b>1996</b>	<b>1997</b>	<b>1998</b>	<b>1999</b>	<b>2000</b>	<b>2001</b>	
Total Headcount	16,073	15,690	15,468	14,085	14,091	13,708	15,372	
Full-Time	35%	38%	40%	35%	39%	40%	42%	
Part-Time	65%	62%	60%	65%	61%	60%	58%	
Equivalent Full-Time	10,632	10,653	10,680	8,219	8,253	8,439	9,699	
<b>On-Campus Student Demographics</b>								
Headcount by Gender:	Male	6,248	6,118	6,083	5,533	5,606	5,364	5,948
	Female	9,825	9,572	9,385	8,552	8,485	8,344	9,424
Headcount by Ethnicity:	Asian	1,016	1,056	1,041	1,049	1,190	1,296	1,461
	Black	4,792	4,848	4,823	4,372	4,376	4,142	4,978
	Hispanic	389	412	424	389	480	480	548
	Multiracial		172	272	302	367	438	575
	Native American	49	40	41	30	40	39	45
	White	9,827	9,162	8,867	7,943	7,638	7,313	7,765
Others:	Senior Citizens	11	18	14	16	20	18	31
	Non-U.S.	1,828	1,943	1,924	1,881	2,079	2,102	2,443
	Average Age	25.3	25.4	25.4	25.0	24.3	24.1	24.7
	Median Age	23	23	23	22	22	21	22

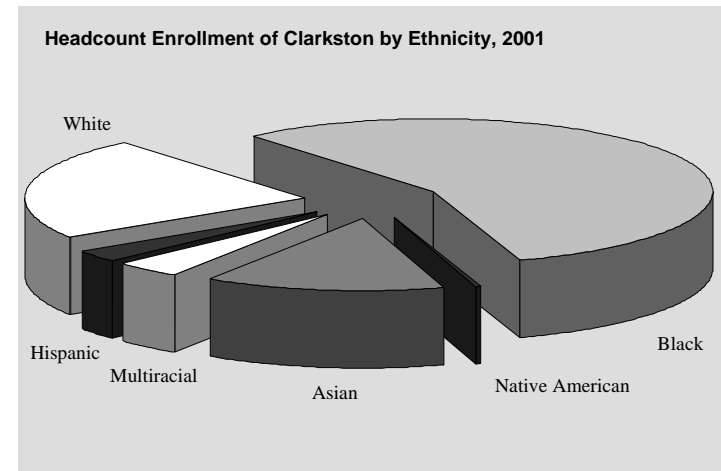
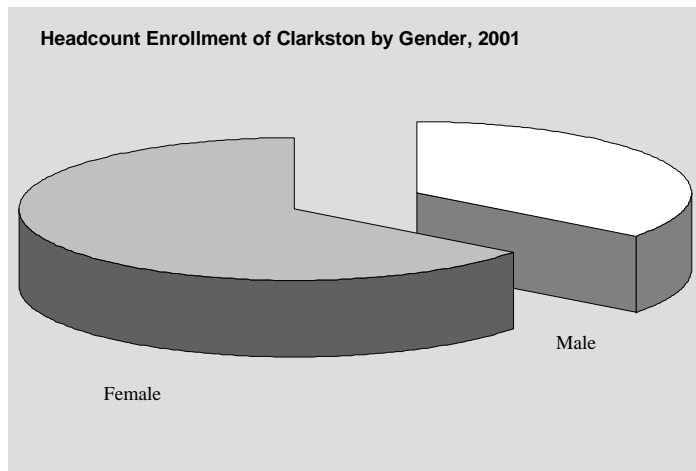


## Enrollment Summary II - GPC All Campuses, Fall 1995-2001

<b>On-Campus Enrollment by Schedule</b>							
	<b>1995</b>	<b>1996</b>	<b>1997</b>	<b>1998</b>	<b>1999</b>	<b>2000</b>	<b>2001</b>
Day	10,740	10,991	10,769	10,325	11,488	11,330	12,526
Evening	6,967	6,639	6,656	6,345	6,699	6,577	7,746
Weekend	615	658	762	951	2,187	1,983	2,536
<b>On-Campus Enrollment by Classification</b>							
Learning Support/Developmental Studies	4,008	4,113	3,928	3,270	3,476	3,298	3,821
Joint Enrollment	590	580	803	876	905	915	759
Freshman	5,172	5,540	5,099	4,837	4,939	5,012	5,776
Sophomore	5,574	5,118	5,212	4,715	4,342	4,078	4,474
Transient	309	263	283	202	241	229	301
Unclassified	420	1	143	185	188	176	241
<b>On-Campus New Student Enrollment by Classification</b>							
Learning Support/Developmental Studies	1,904	1,849	1,813	1,633	1,793	1,731	2,295
Joint Enrollment	574	540	782	861	884	874	735
Freshman	574	982	653	720	822	880	802
Transfer	957	826	743	702	775	778	907
Transient	137	130	113	84	111	89	136
Unclassified	158	0	118	73	105	73	108
Total	4,304	4,327	4,222	4,073	4,490	4,425	4,983
<b>On-Campus Students Needing Learning Support</b>							
Math		3,413	3,263	2,815	2,723	2,680	3,162
English		1,205	1,156	970	1,101	1,055	1,173
Reading		919	815	781	894	881	825
Unduplicated Head Count		4,113	3,928	3,270	3,476	3,298	3,821
<b>On-Campus Student Enrollment by Residence</b>							
Georgia	15,032	14,697	14,531	13,304	13,261	12,706	14,258
Out-of-State	944	903	845	667	731	894	980
Non-Resident Tuition Waived	97	90	92	114	99	108	134

# Enrollment of GPC Clarkston, Fall 1995-2001

<b>On-Campus Student Enrollment</b>								
	1995	1996	1997	1998	1999	2000	2001	
Total Headcount	6,645	6,025	5,615	5,045	4,933	4,498	4,709	
Full-Time	38%	41%	41%	36%	39%	42%	43%	
Part-Time	62%	59%	59%	64%	61%	58%	57%	
Equivalent Full-Time	4,141	3,898	3,680	2,781	2,588	2,937	3,106	
<b>On-Campus Student Demographics</b>								
Headcount by Gender:	Male	2,483	2,248	2,077	1,778	1,786	1,618	1,662
	Female	4,162	3,777	3,538	3,267	3,147	2,880	3,047
Headcount by Ethnicity:	Asian	750	747	673	621	660	673	649
	Black	2,973	2,915	2,829	2,677	2,599	2,354	2,648
	Hispanic	166	147	139	124	133	133	118
	Multiracial		67	110	135	151	154	191
	Native American	18	14	15	9	14	12	11
	White	2,738	2,135	1,849	1,479	1,376	1,172	1,092
Others:	Senior Citizens	7	10	6	8	10	7	12
	Non-U.S.	1,310	1,330	1,209	1,178	1,199	1,170	1,158
	Average Age	26.4	26.4	27.0	26.2	25.9	25.5	25.8
	Median Age	24	24	24	24	23	23	23

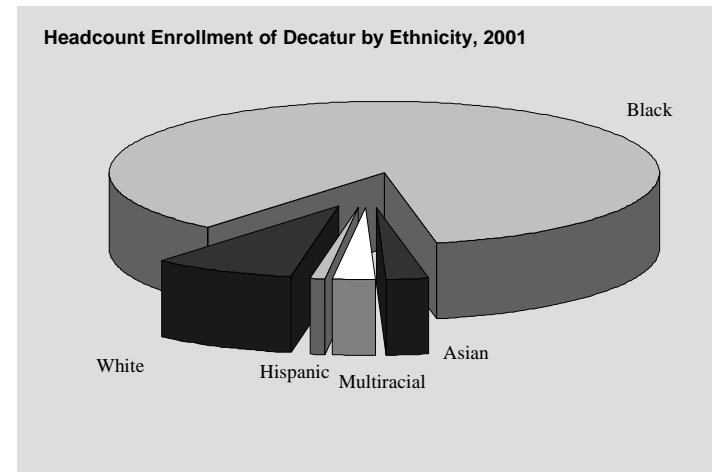


## Enrollment of GPC Clarkston (Continued), Fall 1995-2001

<b>On-Campus Enrollment by Schedule</b>							
	<b>1995</b>	<b>1996</b>	<b>1997</b>	<b>1998</b>	<b>1999</b>	<b>2000</b>	<b>2001</b>
Day	4,633	4,636	4,253	3,954	4,024	3,891	4,047
Evening	2,484	2,235	2,161	2,124	2,092	2,139	2,283
Weekend	342	392	359	474	844	805	916
<b>On-Campus Enrollment by Classification</b>							
Learning Support/Developmental Studies	1,603	1,573	1,376	1,188	1,244	1,127	1,204
Joint Enrollment	61	51	47	54	53	30	37
Freshman	2,021	2,044	1,711	1,539	1,557	1,540	1,625
Sophomore	2,609	2,259	2,302	2,105	1,945	1,677	1,686
Transient	128	92	114	76	72	61	86
Unclassified	223	0	65	83	62	63	71
<b>On-Campus New Student Enrollment by Classification</b>							
Learning Support/Developmental Studies	683	633	583	534	600	563	632
Joint Enrollment	57	48	42	52	48	28	33
Freshman	193	316	167	192	211	235	217
Transfer	394	293	230	247	267	234	252
Transient	59	49	45	32	32	29	36
Unclassified	75	0	55	29	29	24	34
Total	1,461	1,339	1,122	1,086	1,187	1,113	1,204
<b>On-Campus Students Needing Learning Support</b>							
Math		1,297	1,142	1,032	1,059	947	1,037
English		459	400	361	362	331	349
Reading		361	304	305	292	266	257
Unduplicated Head Count		1,573	1,376	1,188	1,244	1,127	1,204
<b>On-Campus Student Enrollment by Residence</b>							
Georgia	6,058	5,474	5,140	4,645	4,531	4,026	4,329
Out-of-State	537	504	417	336	343	417	329
Non-Resident Tuition Waived	50	47	58	64	59	55	51

# Enrollment of GPC Decatur, Fall 1995-2001

<b>On-Campus Student Enrollment</b>								
	<b>1995</b>	<b>1996</b>	<b>1997</b>	<b>1998</b>	<b>1999</b>	<b>2000</b>	<b>2001</b>	
Total Headcount	1,531	1,380	1,274	1,148	1,274	1,137	1,375	
Full-Time	34%	34%	38%	30%	32%	33%	34%	
Part-Time	66%	66%	62%	70%	68%	67%	66%	
Equivalent Full-Time	843	797	750	538	547	668	822	
<b>On-Campus Student Demographics</b>								
Headcount by Gender:	Male	518	381	376	335	364	323	380
	Female	1,013	999	898	813	910	814	995
Headcount by Ethnicity:	Asian	21	18	27	27	20	16	32
	Black	1,267	1,216	1,115	1,007	1,085	981	1,181
	Hispanic	8	8	13	6	17	13	11
	Multiracial		7	19	17	25	25	37
	Native American	3	6	0	2	3	1	0
	White	232	125	100	89	124	101	114
Others:	Senior Citizens	0	0	0	2	2	2	0
	Non-U.S.	92	89	83	78	76	55	74
	Average Age	27.0	26.7	27.1	26.5	26.0	25.5	25.3
	Median Age	24	24	24	23	23	22	22



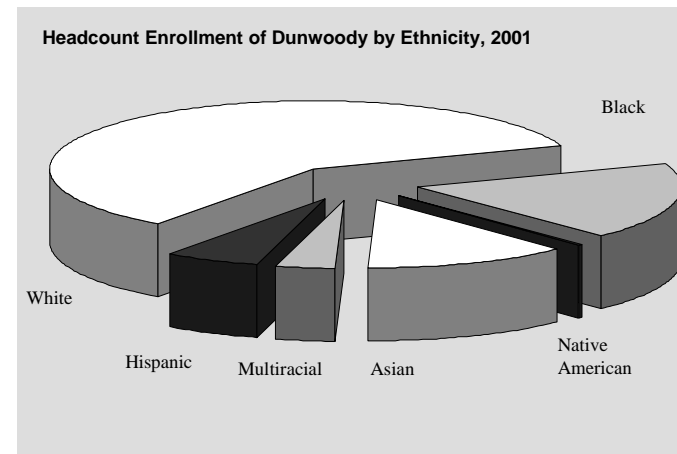
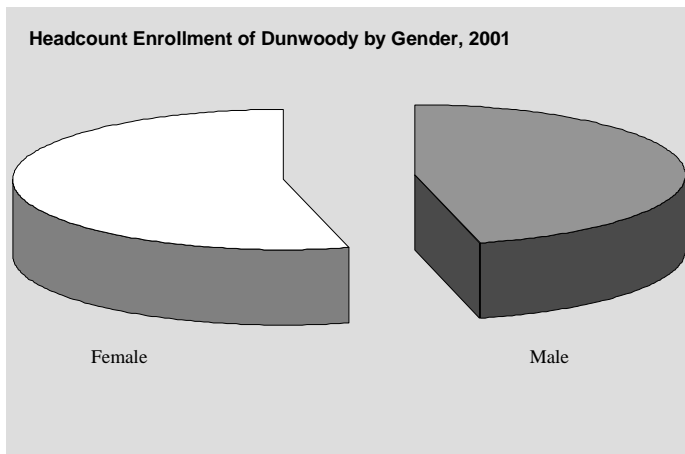
## Enrollment of GPC Decatur (Continued), Fall 1995-2001

<b>On-Campus Enrollment by Schedule</b>							
	<b>1995</b>	<b>1996</b>	<b>1997</b>	<b>1998</b>	<b>1999</b>	<b>2000</b>	<b>2001</b>
Day	966	913	839	891	955	943	1,178
Evening	558	581	514	398	551	543	650
Weekend	0	0	5	47	108	184	328
<b>On-Campus Enrollment by Classification</b>							
Learning Support/Developmental Studies	472	472	441	382	517	440	501
Joint Enrollment	1	4	11	7	4	8	9
Freshman	446	426	352	342	352	344	441
Sophomore	563	459	448	393	372	320	386
Transient	23	18	15	13	13	18	20
Unclassified	26	0	7	11	16	7	18
<b>On-Campus New Student Enrollment by Classification</b>							
Learning Support/Developmental Studies	197	173	169	179	246	211	262
Joint Enrollment	1	4	8	7	4	8	9
Freshman	11	46	16	14	36	30	34
Transfer	62	57	40	42	58	50	70
Transient	11	5	4	6	8	9	8
Unclassified	7	0	5	2	12	3	9
Total	289	285	242	250	364	311	392
<b>On-Campus Students Needing Learning Support</b>							
Math		336	363	316	410	342	386
English		197	144	133	188	165	177
Reading		175	112	121	175	160	163
Unduplicated Head Count		472	441	382	517	440	501
<b>On-Campus Student Enrollment by Residence</b>							
Georgia	1,466	1,342	1,233	1,179	1,235	1,101	1,323
Out-of-State	57	36	39	25	31	31	41
Non-Resident Tuition Waived	8	2	2	4	8	5	11

# Enrollment of GPC Dunwoody, Fall 1995-2001

<b>On-Campus Student Enrollment</b>									
	1995	1996	1997	1998	1999	2000	2001	2001	2001
Total Headcount	5,600	5,038	5,142	4,620	4,797	4,671	145	5,099	275
Full-Time	35%	39%	43%	37%	43%	44%	53%	46%	61%
Part-Time	65%	61%	57%	63%	57%	56%	47%	54%	39%
Equivalent Full-Time	3,473	3,282	3,449	2,569	2,600	3,058	100	3,417	208
<b>On-Campus Student Demographics</b>									
Headcount by Gender:									
Male	2,366	2,215	2,298	2,076	2,118	2,069	75	2,231	121
Female	3,234	2,823	2,844	2,544	2,679	2,602	70	2,868	154
Headcount by Ethnicity:									
Asian	256	262	325	350	498	589	12	677	23
Black	706	642	787	733	868	852	7	959	19
Hispanic	167	186	204	201	267	271	3	321	13
Multiracial		56	93	108	153	163	7	217	12
Native American	25	17	17	14	18	15	1	19	1
White	4,446	3,875	3,716	3,214	2,993	2,781	115	2,906	207
Others:									
Senior Citizens	4	5	6	6	6	8	0	13	0
Non-U.S.	382	496	665	635	872	974	12	1,148	28
Average Age	24.7	25.0	25.3	24.5	24.1	24.1	20.1	24.3	22.1
Median Age	23	23	23	22	22	22	19	22	20

Note: For the years 2000 and 2001, there are two numbers for each category. The first one is for Dunwoody and the second Alpharetta. The two charts are for Dunwoody only.



## Enrollment of GPC Dunwoody (Continued), Fall 1995-2001

<b>On-Campus Enrollment by Schedule</b>									
	<b>1995</b>	<b>1996</b>	<b>1997</b>	<b>1998</b>	<b>1999</b>	<b>2000</b>	<b>2001</b>		
Day	3,405	3,565	3,585	3,387	3,768	3,908	145	4,202	274
Evening	2,549	2,472	2,417	2,259	2,402	2,574	42	2,954	73
Weekend	273	286	314	299	713	823	13	914	32
<b>On-Campus Enrollment by Classification</b>									
Learning Support/Developmental Studies	1,168	1,238	1,245	1,006	1,033	1,016	20	1,057	53
Joint Enrollment	342	127	158	161	137	127	43	136	16
Freshman	1,740	1,802	1,745	1,661	1,797	1,811	54	2,002	143
Sophomore	2,076	1,757	1,824	1,640	1,626	1,551	27	1,675	48
Transient	121	104	110	84	109	88	1	122	11
Unclassified	153	0	60	68	95	78	0	107	4
<b>On-Campus New Student Enrollment by Classification</b>									
Learning Support/Developmental Studies	564	577	573	468	518	502	15	544	34
Joint Enrollment	333	109	153	154	129	105	41	122	15
Freshman	170	280	180	201	293	287	24	312	44
Transfer	355	292	301	268	310	308	4	372	23
Transient	50	51	45	35	49	32	0	53	6
Unclassified	64	0	49	32	55	37	0	48	0
Total	1,536	1,309	1,301	1,158	1,354	1,271	84	1,451	122
<b>On-Campus Students Needing Learning Support</b>									
Math		1,051	1,067	883	871	847	15	883	52
English		319	323	248	308	284	6	298	7
Reading		222	209	178	231	261	4	181	5
Unduplicated Head Count		1,238	1,245	1,006	1,033	1,016	20	1,057	53
<b>On-Campus Student Enrollment by Residence</b>									
Georgia	5,235	4,706	4,755	4,288	4,361	4,101	133	4,482	242
Out-of-State	328	304	356	284	381	495	11	529	32
Non-Resident Tuition Waived	37	28	31	48	55	75	1	88	1

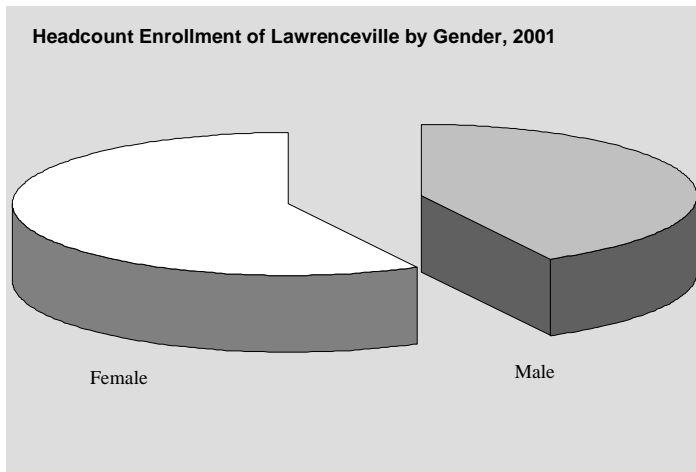
Note: In each cell of the years 2000 and 2001, there are two numbers. The first one is for Dunwoody and the second Alpharetta.

# Enrollment of GPC Lawrenceville, Fall 1995-2001

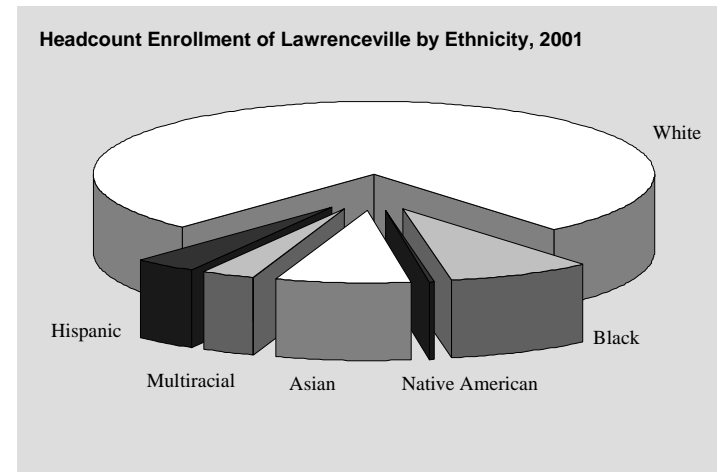
On-Campus Student Enrollment							
	1995	1996	1997	1998	1999	2000	2001
Total Headcount	2,729	2,781	2,956	2,877	3,252	3,279	3,602
Full-Time	41%	45%	48%	46%	49%	50%	52%
Part-Time	59%	55%	52%	54%	51%	50%	48%
Equivalent Full-Time	1,781	1,885	2,022	1,720	1,828	2,196	2,445

On-Campus Student Demographics							
Headcount by Gender:	Male	1,105	1,143	1,250	1,240	1,436	1,525
	Female	1,624	1,638	1,706	1,637	1,816	2,077
Headcount by Ethnicity:	Asian	73	83	105	124	173	278
	Black	153	151	214	179	253	303
	Hispanic	74	77	77	71	120	126
	Multiracial		26	42	51	62	102
	Native American	6	4	11	3	11	8
	White	2,423	2,440	2,507	2,449	2,633	2,567
Others:	Senior Citizens	0	1	1	0	1	0
	Non-U.S.	108	133	145	165	243	321
	Average Age	23.8	23.4	24.1	22.8	22.9	22.6
	Median Age	21	21	23	20	20	20

Headcount Enrollment of Lawrenceville by Gender, 2001



Headcount Enrollment of Lawrenceville by Ethnicity, 2001

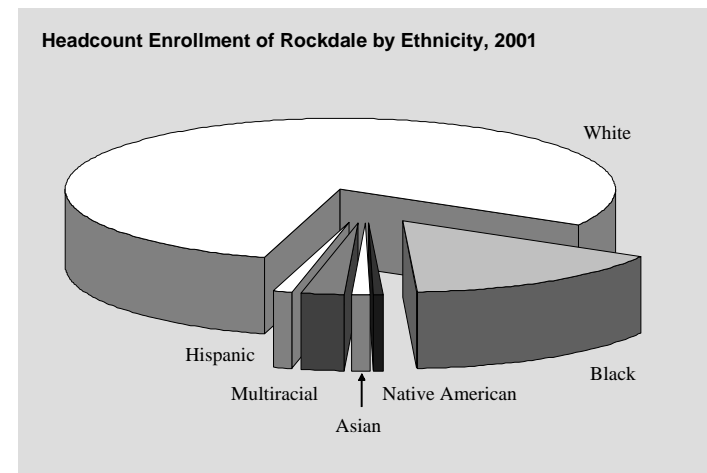
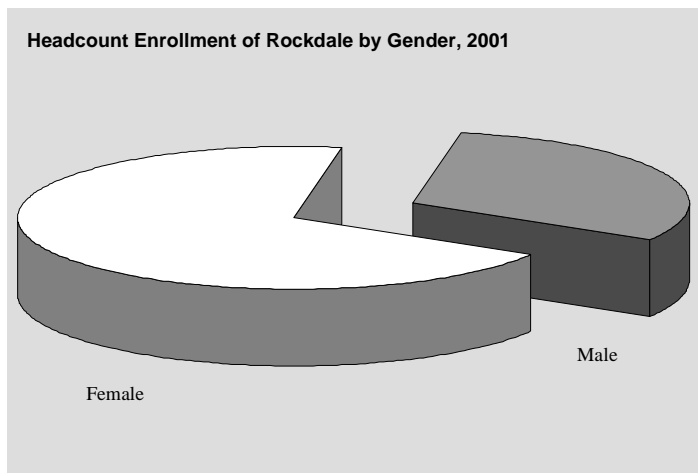


## Enrollment of GPC Lawrenceville (Continued), Fall 1995-2001

<b>On-Campus Enrollment by Schedule</b>							
	<b>1995</b>	<b>1996</b>	<b>1997</b>	<b>1998</b>	<b>1999</b>	<b>2000</b>	<b>2001</b>
Day	1812	1919	2069	2189	2,643	2,575	3,042
Evening	1192	1212	1343	1300	1,617	1,823	1,956
Weekend	0	0	84	132	506	546	718
<b>On-Campus Enrollment by Classification</b>							
Learning Support/Developmental Studies	687	687	675	626	711	769	892
Joint Enrollment	106	94	112	124	146	107	130
Freshman	1,040	1,151	1,207	1,255	1,401	1,368	1,518
Sophomore	811	817	914	818	929	965	1,001
Transient	49	31	38	34	45	45	42
Unclassified	36	0	10	20	20	25	19
<b>On-Campus New Student Enrollment by Classification</b>							
Learning Support/Developmental Studies	397	386	390	398	435	459	587
Joint Enrollment	104	83	107	118	142	97	128
Freshman	193	287	257	300	296	329	241
Transfer	159	159	162	149	197	188	284
Transient	20	12	13	14	15	12	17
Unclassified	16	0	8	8	9	8	5
Total	889	927	937	987	1,094	1,093	1,262
<b>On-Campus Students Needing Learning Support</b>							
Math		594	539	521	555	577	736
English		203	236	228	259	297	294
Reading		142	153	167	207	222	202
Unduplicated Head Count		687	675	626	711	769	892
<b>On-Campus Student Enrollment by Residence</b>							
Georgia	2,625	2,686	2,857	2,791	3,164	3,186	3,498
Out-of-State	90	81	88	74	78	83	96
Non-Resident Tuition Waived	14	14	11	12	10	10	8

# Enrollment of GPC Rockdale, Fall 1995-2001

On-Campus Student Enrollment								
	1995	1996	1997	1998	1999	2000	2001	
Total Headcount	692	640	689	689	757	817	908	
Full-Time	29%	33%	38%	36%	39%	40%	44%	
Part-Time	71%	67%	62%	64%	61%	60%	56%	
Equivalent Full-Time	394	369	422	356	354	501	582	
On-Campus Student Demographics								
Headcount by Gender:	Male	221	239	249	245	276	247	281
	Female	471	401	440	444	481	570	627
Headcount by Ethnicity:	Asian	6	4	4	11	11	13	12
	Black	73	64	58	76	116	119	145
	Hispanic	10	11	6	6	13	15	10
	Multiracial		2	10	5	9	11	21
	Native American	2	1	1	3	3	3	3
	White	601	558	610	588	605	656	717
Others:	Senior Citizens	1	0	1	0	1	1	2
	Non-U.S.	10	14	12	17	30	19	22
	Average Age	25.3	25.8	25.3	24.9	24.7	24.7	24.4
	Median Age	21	22	23	22	21	21	21



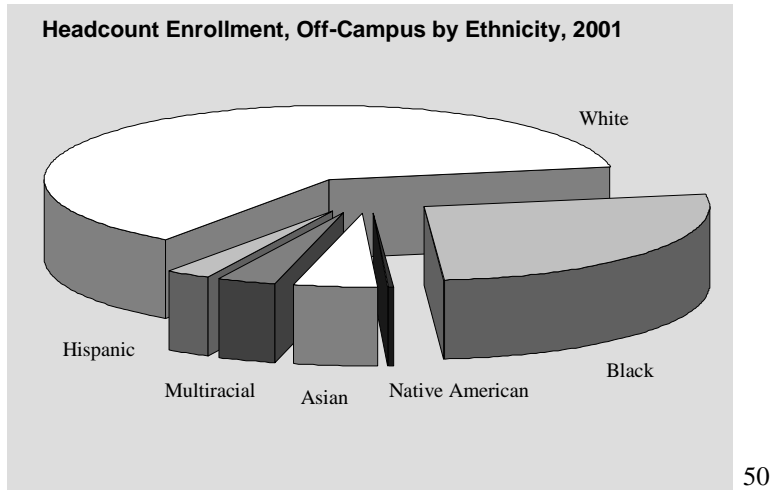
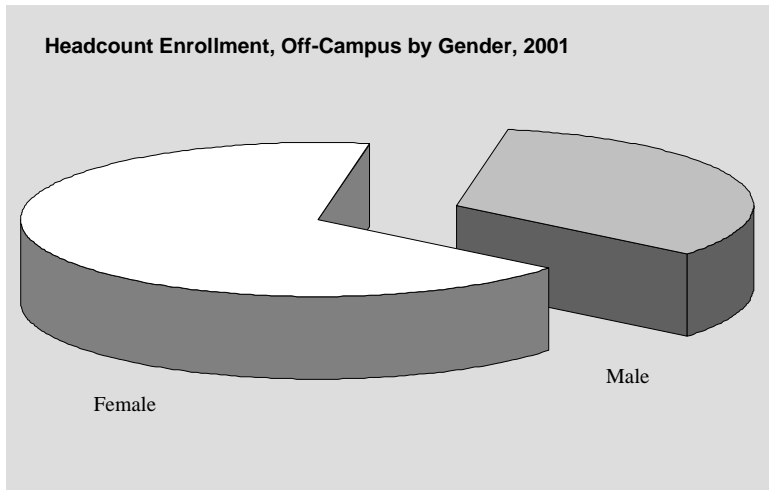
# Enrollment of GPC Rockdale (Continued), Fall 1995-2001

<b>On-Campus Enrollment by Schedule</b>							
	<b>1995</b>	<b>1996</b>	<b>1997</b>	<b>1998</b>	<b>1999</b>	<b>2000</b>	<b>2001</b>
Day	348	368	427	422	517	602	677
Evening	330	367	357	420	439	545	665
Weekend	0	0	0	0	16	54	56
<b>On-Campus Enrollment by Classification</b>							
Learning Support/Developmental Studies	204	205	207	176	193	213	266
Joint Enrollment	83	15	22	15	13	8	22
Freshman	245	255	264	267	314	350	367
Sophomore	142	156	188	223	231	231	232
Transient	11	9	7	5	4	10	12
Unclassified	7	0	1	3	2	5	9
<b>On-Campus New Student Enrollment by Classification</b>							
Learning Support/Developmental Studies	115	110	112	100	105	125	166
Joint Enrollment	80	15	21	15	13	7	21
Freshman	22	37	43	42	47	61	67
Transfer	34	30	35	33	31	47	50
Transient	3	5	2	1	3	5	6
Unclassified	1	0	1	2	1	2	2
Total	255	197	214	193	200	247	311
<b>On-Campus Students Needing Learning Support</b>							
Math		185	172	151	163	163	212
English		45	49	30	47	68	82
Reading		31	36	37	36	54	50
Unduplicated Head Count		205	207	176	193	213	266
<b>On-Campus Student Enrollment by Residence</b>							
Georgia	685	635	683	684	743	801	893
Out-of-State	6	3	4	3	14	15	15
Non-Resident Tuition Waived	1	2	2	2	0	1	0

# Enrollment of GPC Off-Campus/Distance Ed., Fall 1996-2001

Off-Campus/Distance Education Student Enrollment						
	1996	1997	1998	1999	2000	2001
Total Headcount	713	915	1,031	1,517	1,376	1,721
Full-Time	24%	23%	19%	41%	44%	32%
Part-Time	76%	77%	81%	59%	56%	68%
Equivalent Full-Time	281	357	255	337	909	971

Off-Campus/Distance Education Student Demographics							
Headcount by Gender:	Male	225	269	326	554	462	567
	Female	488	646	705	963	914	1,154
Headcount by Ethnicity:	Asian	22	36	53	96	111	80
	Black	150	207	206	302	407	460
	Hispanic	8	16	14	23	33	43
	Multiracial	15	13	13	27	31	60
	Native American	1	3	0	2	3	4
	White	517	640	727	1,067	791	1,074
Others:	Senior Citizens	0	0	0	1	0	1
	Non-U.S.	22	41	53	122	151	122
	Average Age	24.6	24	22.6	23.3	26.3	24.5
	Median Age	21	22	18	20	22	22



## Enrollment of GPC Off-Campus/Distance Ed. (Continued), Fall 96-01

<b>Off-Campus/Distance Education Enrollment by Schedule</b>						
	<b>1996</b>	<b>1997</b>	<b>1998</b>	<b>1999</b>	<b>2000</b>	<b>2001</b>
Day	36	0	0		966	1,198
Evening	0	0	25		711	588
Weekend	0	0	0		292	256
<b>Off-Campus/Distance Education Enrollment by Classification</b>						
Learning Support/Developmental Studies	33	42	59	106	149	103
Joint Enrollment	303	467	543	585	14	447
Freshman	153	131	158	309	479	404
Sophomore	205	251	253	462	674	695
Transient	19	16	12	37	39	35
Unclassified	0	3	6	18	21	37
<b>Off-Campus/Distance Education New Student Enrollment by Classification</b>						
Learning Support/Developmental Studies	7	7	16	39	60	39
Joint Enrollment	292	467	542	581	11	440
Freshman	14	6	9	25	38	22
Transfer	25	24	21	41	91	79
Transient	10	8	6	19	19	14
Unclassified	0	2	2	9	5	19
Total	348	514	596	714	224	613
<b>Off-Campus/Distance Education Students Needing Learning Support</b>						
Math	31	40	57	97	126	93
English	4	2	6	8	20	12
Reading	2	1	0	9	16	6
Unduplicated Head Count	33	42	59	106	149	103
<b>Off-Campus/Distance Education Student Enrollment by Residence</b>						
Georgia	694	893	1,007	1,461	1,280	1,668
Out-of-State	17	20	20	52	84	47
Non-Resident Tuition Waived	2	2	4	4	12	6

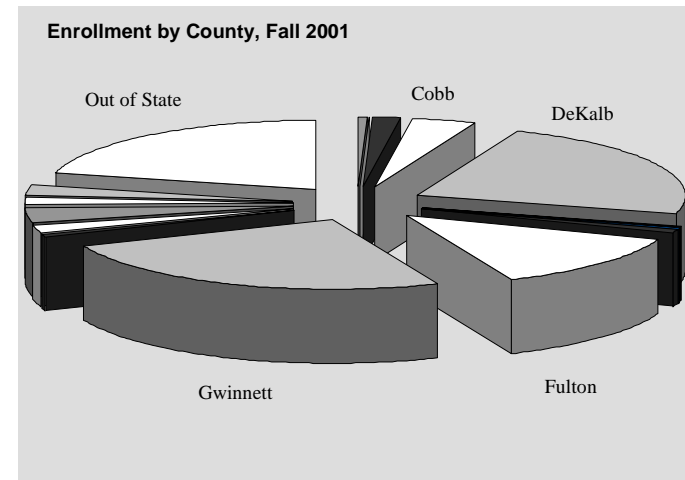
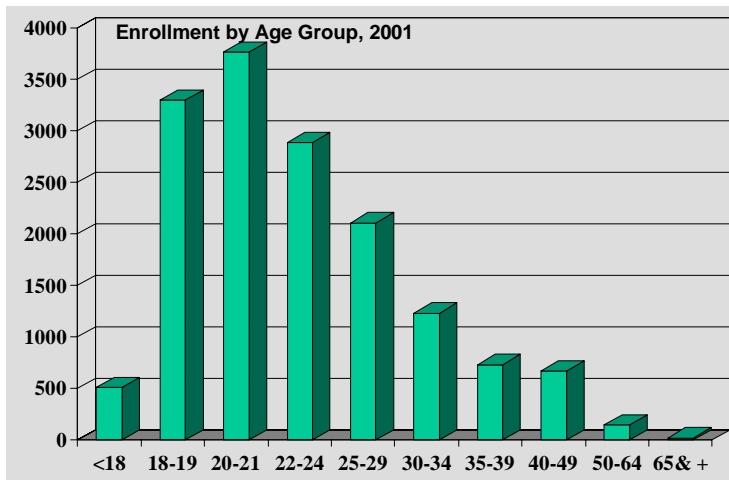
# Enrollment by Age Group, Fall 1997-2001; and by County, Fall 2001

**Enrollment by Age Group, Fall 1997 to 2001**

	1997	1998	1999	2000	2001
Under 18	885	585	604	633	511
18-19	1,112	2,763	3,024	2,934	3,297
20-21	3,655	3,057	3,249	3,436	3,766
22-24	3,323	2,645	2,569	2,445	2,886
25-29	3,083	2,302	2,098	1,927	2,109
30-34	1,547	1,223	1,107	988	1,230
35-39	853	673	657	642	731
40-49	822	685	625	555	672
50-64	172	140	141	137	149
65 & +	16	12	17	11	21
<b>Total</b>	<b>15,468</b>	<b>14,085</b>	<b>14,091</b>	<b>13,708</b>	<b>15,372</b>

**Enrollment by County, Fall 2001**

County	Enrollment	Percent
Cherokee	65	.4
Clarke	29	.2
Clayton	254	1.7
Cobb	577	3.8
DeKalb	3,569	23.2
Douglas	53	.3
Fayette	26	.2
Forsyth	107	.7
Fulton	2,018	13.1
Gwinnett	3,903	25.4
Henry	92	.6
Newton	227	1.5
Rockdale	585	3.8
Walton	224	1.5
Others in State	413	2.6
Out of State	3,230	21.0
<b>Total</b>	<b>15,372</b>	<b>100.0</b>



## High Schools Attended by 90 or More Students, Fall 2000-01

High School	Total Fall Enrollment		New Student Enrollment		Enrollment of New HS Grads	
	2000	2001	2000	2001	2000	2001
<b>DeKalb</b> Clarkston	121	142	36	38	27	28
Columbia	77	99	17	29	9	7
Cross Keys	120	121	33	27	21	17
Dunwoody	188	231	65	96	17	19
Lakeside	126	162	47	62	26	27
Lithonia	102	119	25	32	15	15
McNair	100	96	18	20	5	4
Open Campus	168	179	35	39	15	15
Redan	180	200	28	47	17	23
Southwest DeKalb	137	172	34	60	14	17
Stone Mountain	129	123	24	26	19	12
Tucker	130	144	40	40	25	15
<b>Fulton</b> Chattahoochee/Crestwood	276	184	162	58	21	24
Independence	104	143	22	40	6	7
Milton	170	223	68	134	17	32
North Springs	138	160	69	78	11	9
Roswell	153	96	96	27	13	18
<b>Gwinnett</b> Berkmar	236	270	46	79	37	59
Brookwood	369	380	132	161	69	78
Centennial	159	86	123	39	25	19
Central Gwinnett	225	227	57	75	39	47
Collins Hill	267	341	100	140	72	90
Dacula	112	149	49	53	37	33
Duluth	222	273	84	112	42	55
Meadowcreek	243	270	49	67	35	39
Norcross	175	197	37	52	17	25
Parkview	251	270	62	107	44	61
Phoenix (Open Campus)	203	215	61	62	22	16
Shiloh	238	255	53	72	37	41
South Gwinnett	317	363	100	141	67	76
<b>Rockdale</b> Heritage	163	187	62	95	12	20
Rockdale	142	164	52	73	17	21
Salem High School	125	130	48	44	15	16
<b>Walton</b> Loganville	118	121	25	42	15	27

**Note: All numbers are HS students attending GPC. New HS Grad refers to a student new to GPC and newly graduated from HS.**

# International Student Enrollment I, Fall 1998-2001

Country	98	99	00	01	Country	98	99	00	01	Country	98	99	00	01
Afghanistan	13	11	8	5	Cape Verde				1	Guatemala	2	5	7	8
Albania	1	2	1	3	Central Africa	1	1	1		Guinea	4	4	5	8
Algeria	4	6	7	3	Chade				1	Guyana	24	22	15	19
Angola		1	1	2	Chile	4	3	4	4	Haiti	18	17	18	28
Antarctica	1	1	1		China	36	33	34	37	Honduras	5	3	5	5
Antigua	2	1		1	Colombia	34	48	61	88	Hong Kong	18	15	13	15
Argentina	1	3	3	4	Congo	1	1		9	Hungary				1
Armenia				2	Coral Sea Isl	1	1	1		India	97	117	113	145
Australia	1	1	5	5	Costa Rica	1	4	3	5	Indonesia	20	35	38	34
Austria	2	1	4	6	Cote D'Ivoire	7	8	15		Iran	28	37	44	53
Azerbaijan	2	1	1	1	Croatia	1		2	3	Iraq	2	4	5	5
Bahamas	13	11	6	6	Cuba	5	6	4	2	Ireland	5	7	2	2
Bangladesh	28	32	36	34	Czech Rep.	1	1	1	1	Israel	5	9	8	8
Barbados			2	5	Czechslovakia	3	1		6	Italy	5	4	5	2
Belarus		3	5	9	Djibouti		1	1	1	Ivory Coast				16
Belgium	5	7	4	5	Dominica	2	1	2	4	Jamaica	116	104	85	113
Belize	1	1	2	1	Dominican R	3	9	5	6	Japan	31	32	33	33
Benin				3	Ecuador		2	1	3	Jordan	3	2	4	3
Bermuda	6	4	5	2	Egypt	2	1			Kazakhstan				1
Bolivia	3	2	2	2	El Salvador	8	7	10	11	Kenya	15	16	19	15
Bosnia/Herzeg	23	24	29	47	Eritrea	19	18	14	16	Kiribati				1
Botswana				1	Ethiopia	98	101	94	108	Korea, DPR	1			2
Bouvet Island				1	Fiji		1			Korea, R	114	157	164	198
Brazil	30	29	32	34	Finland	3	3	5	2	Kuwait	1			
Bulgaria	2	6	3	4	France	16	22	16	15	Laos	14	14	9	9
Burkina Faso				2	Gabon		1		1	Latvia	3	3	5	6
Burma			3	5	Gambia	3	5	5	8	Lebanon	7	8	8	13
Cambodia	10	13	8	8	Germany	13	22	18		Liberia	21	27	28	35
Cameroon	10	13	11	17	Ghana	13	14	22	19	Libya	1			
Canada	48	59	50	49	Greece	2	1	2	2	Liechtenstein				1
Cayman Isl	1	1			Grenada			1	1	Lithuania	4	2	2	4

## International Student Enrollment II, Fall 1998-2001

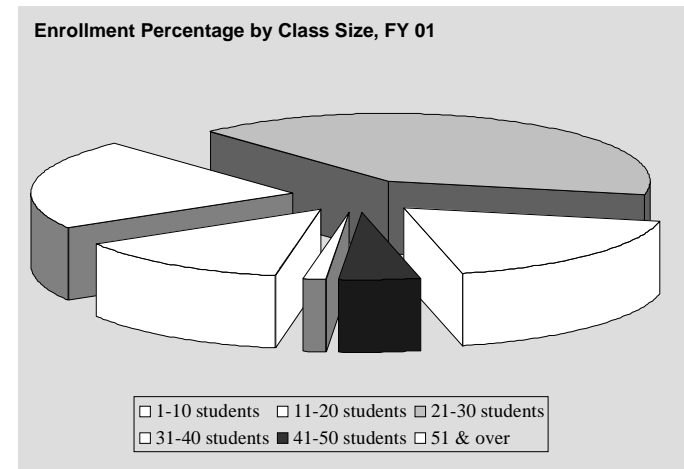
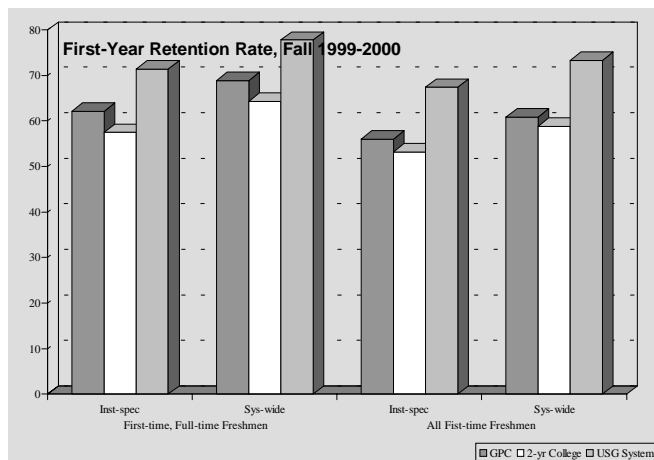
Country	98	99	00	01	Country	98	99	00	01	Country	98	99	00	01
Macau			1		Portugal	3	1		1	Thailand	12	10	20	21
Macedonia			1	1	Romania	26	29	34	33	Togo	1	3	3	2
Madagascar	1				Russia	25	32	27	35	Trinida/Tobag	29	30	28	34
Malawi	2				Rwanda				3	Tunisia	2	2	5	1
Malaysia	11	7	10	12	Saudi Arabia	2	4	4	4	Turkey	3	6	11	14
Mali	3	3	4	4	Senegal	7	13	14	13	Uganda		3	2	1
Mauritius				1	Seychelles				1	Ukraine	5	8	7	5
Mexico	22	29	29	36	Singapore	2				United Kingdom	32	35	39	37
Moldova	2	2	3	3	Slovakia				1	Uruguay	1		2	1
Morocco	5	8	8	14	Somalia	14	21	33	38	US Related	68			
Namibia	1				South Africa	8	12	12	22	Uzbekistan	2	1	2	
Nepal	1	2	3	2	Spain	12	11	8	5	Venezuela	20	21	27	22
Netherlands	7	4	5	5	Sri Lanka				1	Vietnam	219	217	230	265
Netherlands Ant				1	St. Kitts & Nevis	1	2	2	3	West Germany				19
Nicaragua	7	6	3	5	St. Lucia	2	1	1		Yugoslavia	2	4	7	5
Nigeria	99	116	107	129	St. Vincent	4	1			Zaire	7	10		
Niue				1	Sudan	5	6	6	12	Zambia		2	1	3
Norway	1	2	2	1	Suriname		1	6	1	Zimbabwe	1	1	5	7
Pakistan	29	40	43	69	Sweden	11	13	13	8					
Panama	7	8	8	9	Switzerland	1		2						
Paraguay			1	1	Syria	3	1	1	3					
Peru	13	12	11	15	Taiwan	49	46	55	59					
Philippines	9	9	12	14	Tajikistan	1	1	1	1	<b>Total Students</b>	<b>1,865</b>	<b>2,008</b>	<b>2,061</b>	<b>2,428</b>
Poland	12	12	10	10	Tanzania	5	7	6	10	<b>Total Countries</b>	<b>124</b>	<b>122</b>	<b>121</b>	<b>138</b>

# Retention Rate, Fall 1999-00; Enrollment by Class Size, FY 1995-01

First-Year Retention Rate, Fall 1999-2000						
Institution	First-Time, Full-Time Freshmen			All First-Time Freshmen		
	Total Freshmen	Institution-specific Rate	System-wide Rate	Total Freshmen	Institution-specific Rate	System-wide Rate
GPC	1,474	62.1%	68.9%	2,467	56.0%	60.9%
Two-Year College Total	6,510	57.5%	64.3%	9,370	53.2%	58.8%
System Total	29,125	71.4%	77.8%	34,145	67.4%	73.3%

Source: Board of Regents, Information Digest, 2000-2001

Enrollment Percentage by Class Size, FY 1995-2001							
Class Size	FY 95	FY 96	FY 97	FY 98	FY 99	FY 00	FY 01
1-10 students	13.4%	12.0%	12.0%	17.7%	19.2%	14.5%	13.5%
11-20 students	38.4%	39.6%	42.3%	41.9%	40.8%	38.0%	21.7%
21-30 students	36.9%	37.3%	35.5%	29.4%	28.5%	32.8%	40.3%
31-40 students	9.6%	9.1%	8.6%	9.9%	10.2%	12.7%	18.1%
41-50 students	1.4%	1.3%	1.2%	0.5%	0.6%	1.0%	5.0%
Over 50 students	0.7%	0.7%	0.4%	0.6%	0.7%	1.0%	1.4%



## Student Financial Aid Awarded by Source, Fiscal Year 1997-01

Awards	FY 1997		FY 1998		FY 1999		FY 2000		FY 2001	
	Student #	\$ Amount	Student #	\$ Amount	Student #	\$ Amount	Student #	\$ Amount	Student #	\$ Amount
<b>GRANTS</b>										
Pell	3,994	5,159,254	4,343	6,473,145	4,293	6,423,000	3,717	5,898,089	6,039	6,393,405
SEOG	674	224,069	545	218,602	651	266,700	992	322,349	538	247,137
Vocational Rehabilitation	52	26,000	N/A	N/A	N/A	N/A	N/A	N/A	N/A	N/A
Georgia Incentive	120	33,315	73	16,100	N/A	N/A	N/A	N/A	N/A	N/A
HOPE	2,020	1,508,034	2,612	2,240,057	3,097	2,767,844	6,346	3,283,802	4,184	3,765,968
<b>LOANS</b>										
GSL	4,800	8,125,610	4,860	8,932,197	1,626	3,567,099	*	*	*	*
Institutional	120	18,000	122	18,000	N/A	N/A	N/A	N/A	N/A	N/A
Regents	36	17,200	30	17,200	30	15,000	N/A	N/A	N/A	N/A
PLUS	24	90,544	15	80,514	1	1,274	1	1,637	0	0
Subsidized							1,315	2,856,001	1,342	2,813,730
Unsubsidized	2,909	2,933,098		4,044,366	1,200	3,150,791	945	2,327,305	966	2,297,532
<b>SCHOLARSHIPS</b>										
Institutional	581	301,936	908	298,821	357	167,504	430	170,668	486	304,325
Other	2,000	425,000	N/A	N/A	122	95,666	98	142,210	42	14,362
<b>STUDENT EMPLOYMENT</b>										
College Work Study	210	283,631	232	461,687	140	309,923	129	310,370	113	547,787
Student Assistants	330	298,000	N/A	N/A	N/A	N/A	N/A	N/A	N/A	N/A
<b>TOTAL AWARDED</b>	<b>17,870</b>	<b>19,443,691</b>	<b>13,740</b>	<b>22,800,689</b>	<b>11,517</b>	<b>16,764,801</b>	<b>13,973</b>	<b>15,312,431</b>	<b>13,710</b>	<b>16,384,246</b>

- GSL was replaced by Subsidized and Unsubsidized Loans in FY 2000.

## Entering Freshman SAT, FY 96 – 00; Regents' Test, FY 99 - 00

Average Composite Scores, Entering Freshmen, FY 1996 – FY 2000; Composite Scores - Recentered					
	FY96	FY97	FY98	FY99	FY00
Georgia Perimeter College	889	888	889	937	934
System Total	987	977	983	1022	1018
Georgia	961	967	968	969	974
Nation	1013	1016	1017	1016	1019

- Note:**
1. This table includes only those freshmen who attended at least five quarter credit hours by Spring quarter for cohorts through 1996 or three semester hours for FY 1999 on.
  2. The composite score is derived by summing the SAT verbal score and the SAT math score. The possible range for SATV and SATM is 200 to 800; the possible composite score range is 400 to 1600.
  3. Beginning in 1996, University System data were reported on a recentered scale.

**Source:** *University System of Georgia Information Digest 2000-2001*. Board of Regents, University System of Georgia, Atlanta, GA. December 2001.

	Regents' Test Passing Rates, FY 1999 – FY 2000							
	First Time				Repeaters*			
	1999		2000		1999		2000	
	N	%	N	%	N	%	N	%
Georgia Perimeter College	2,160	69.7	2,172	67.9	1,014	41.9	859	41.9
System Total	27,382	75.1	29,603	73.9	10,389	45.6	11,116	47.3

**Note:** \*Statistics for repeaters include each repeat attempt. A student passing on the third repeat attempt would be counted three times – twice as failing and once as passing.

**Source:** *University System of Georgia Information Digest 2000-2001*. Board of Regents, University System of Georgia, Atlanta, GA. December 2001.

## Applications Received, Fall 1997-01; Testing Activities, FY 1997-01

Applications Received, Fall 1997-01										
Applications Received	1997		1998		1999		2000		2001	
	#	%	#	%	#	%	#	%	#	%
Total App. Received	13,180	100	12,963	100	12,123	100	13,756	100	15,307	100
Completed Files	8,642	66	8,228	63	7,693	64	8,289	60	9,345	61
Completed – Registered	4,850	37	4,231	33	5,000	41	5,149	37	5,845	38
Completed – Unregistered	3,792	29	3,997	30	2,693	23	3,140	23	3,500	23
Incomplete Files	4,538	34	4,735	37	4,430	36	5,467	40	5,962	39

Testing Activities, FY 1997-01					
Tests Administered	FY 1997	FY 1998	FY 1999	FY 2000	FY 2001
ACT	199	209	187	89	140
Alternate Regents'	289	360	390	334	434
BSE/CPE-Exit	4,266	3,974	2,634	2,839	1,045
BSE/CPE-Placement	6,574	5,904	4,855	4,656	3,192
CLEP	148	237	124	136	132
COMPASS				2,835	6,545
Dental Hygiene Board	33	39	24	25	22
English as a Second Language Placement (ENSL)	780	821	968	809	672
Independent Study	30	39	25	26	33
Institutional SAT	1,459	1,199	1,216	970	1,269
Regents' Test	4,581	4,699	3,282	5,520	7,260
SAT / Assessment Tests	1,495	1,562	1,491	901	1,269
Test of English as a Foreign Language (TOEFL)	320	439	722	962	691
Residual ACT					21
*Other	817	1,666	2,964		
<b>Total</b>	<b>20,991</b>	<b>21,148</b>	<b>18,882</b>	<b>20,102</b>	<b>22,725</b>

## Four-Year Associate or Transfer Rates, Fall 1999

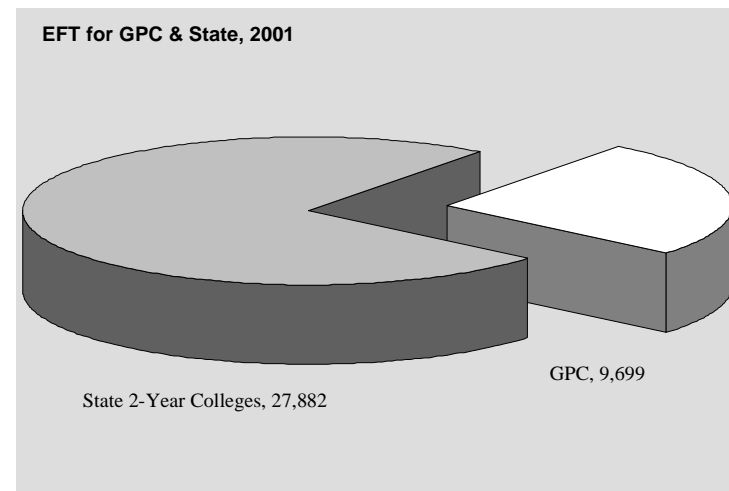
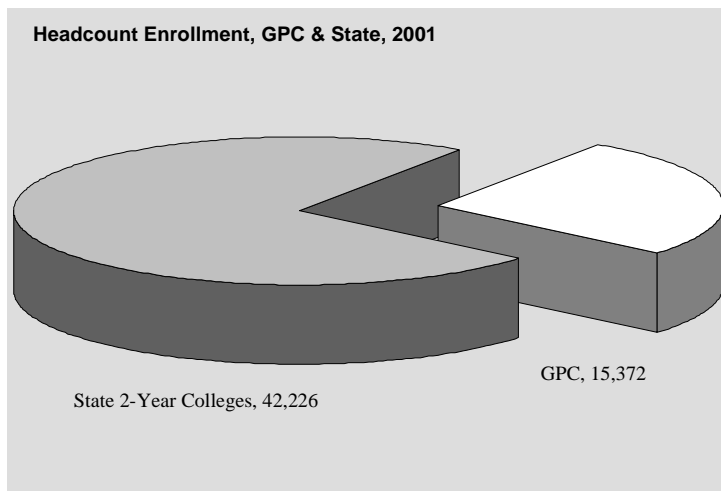
Institution	All Students %	Males %	Females %	White %	African-American %	Hispanic %
State Colleges						
Dalton State College	31.4	22.9	36.7	31.7	18.2	16.7
Macon State College	28.9	30.4	28.2	34.3	15.7	14.3
Two-Year Colleges						
Abraham Baldwin Agric. College	39.8	36.1	45.5	42.3	24.2	18.2
Atlanta Metropolitan College	12.7	13.9	11.8	0.0	12.9	0.0
Bainbridge College	46.0	58.8	39.4	48.7	35.7	0.0
Coastal Georgia Comm. College	33.3	32.5	33.8	37.9	17.9	50.0
Darton College	32.8	34.9	31.6	43.4	8.3	33.3
East Georgia College	45.1	34.7	51.8	46.0	44.4	0.0
Floyd College	24.6	26.3	23.6	25.3	16.7	28.6
Gainsville College	40.8	38.4	42.7	41.9	24.0	45.5
Georgia Perimeter College	26.4	26.2	26.5	29.5	11.8	28.2
Gordon College	42.9	42.5	43.3	45.8	24.7	0.0
Middle Georgia College	41.8	36.2	49.4	48.4	24.3	50.0
South Georgia College	41.6	45.3	39.7	47.2	19.6	0.0
Waycross College	49.1	51.9	48.0	51.7	33.3	0.0

Note: This table presents the percent of first-time, full-time freshmen seeking an associate or certificate who matriculated in Summer or Fall, 1995 and received an associate degree or certificate or transferred to a four-year institution by Fall 99. Source: The BOR, 2001. *University System of Georgia Information Digest 2000-2001.*



## Comparison with Other USG Two-Year Colleges, Fall 2001

Institution	Headcount Enrollment	EFT	Non-White %	Female %	GA Residents %	Freshmen %	New Freshmen %
Abraham Baldwin Agric. College	2,857	2,125	21	52	94	65	35
Atlanta Metro. College	1,940	1,207	99	66	88	74	19
Bainbridge College	1,735	985	42	64	99	55	18
Coastal Georgia Comm. College	2,210	1,214	27	64	93	64	21
Darton College	3,179	2,076	40	68	95	61	22
East Georgia College	1,393	929	40	59	98	75	34
Floyd College	2,400	1,620	15	65	97	68	30
Gainesville College	3,692	2,477	11	58	98	62	25
<b>Georgia Perimeter College</b>	<b>15,372</b>	<b>9,699</b>	<b>50</b>	<b>61</b>	<b>93</b>	<b>62</b>	<b>17</b>
Gordon College	3,074	2,495	28	61	98	70	33
Middle Georgia College	2,165	1,660	32	50	96	67	34
South Georgia College	1,325	885	26	63	95	53	25
Waycross College	884	510	23	70	99	53	20
<b>Two-Year Colleges Total</b>	<b>42,226</b>	<b>27,882</b>	<b>38</b>	<b>61</b>	<b>95</b>	<b>63</b>	<b>23</b>



# Athletics, 2001-2002

---

**Colors:** Gold, Cardinal, Blue

**Affiliation:** National Junior College Athletic Association

**Mascot:** Jaguar

**Conference:** Georgia Junior College Athletic Association

## RECENT ACCOMPLISHMENTS

### Baseball

**Head Coach:** David Stephenson

**Assistant Coach:** Ted Wallen

- 15 players drafted in the 90s; also in 90s 13 All-Tournament players, 32 All-Region selections, 8 All-Americans, and 1 Academic All-American

### Softball

**Head Coach:** Ed Schutte

**Assistant Coach:**

- Won 23 games in 2002, the most wins for the program since the switch to fast pitch softball in 1997.

### Basketball (Men's)

**Head Coach:** Alfred Barney

**Assistant Coach:** Greg Smarr

- GJCAA Regular Season Championship, finished 16-0 in 2002
- Qualified for the national tournament in 2001

### Basketball (Women's)

**Head Coach:** James Waldon

**Assistant Coach:** Christina Shafer

- GJCAA & Region XVII Champions in 2001

### Soccer (Men's)

**Head Coach:** Marc Zagara

**Assistant Coach:** Ron Moore

- Advanced to National Tournament in 1999 and 2000
- Past nine seasons 199-53-25 record. The team has six state championships, three Southeastern championships, and three national tournament appearances in the recent past.
- Zagara's teams have been nationally ranked every year.

### Soccer (Women's)

**Head Coach:** Georges Edeline

**Assistant Coach:** Franklin Lawson

- Had All-Region XVII players in 2001

### Tennis (Men's)

**Head Coach:** Royce Silvon

**Assistant Coach:**

- 1998, 1999, 2000 and 2001 National Champions
- Had top players in junior college tennis 1998-2002

### Tennis (Women's)

**Head Coach:** Royce Silvon

**Assistant Coach:**

- Won 2000 National Championship
- Regional Champions in 1999 and 2000
- Finished 7<sup>th</sup> at 1999 National Tournament

**Sports Information Director:** Daryl Brooks

## Students with Disabilities, from 98-99 to 01-02

	98-99	99-00	00-01	01-02
Visual	37	23	8	9
Deaf/Hard of Hearing	28	33	20	26
Brain Injury	38	29	15	15
Motor/Mobility	52	48	12	23
Psychological/Psychiatric	34	25	9	22
Learning Disability	84	97	115	130
Attention Deficit Hyperactivity Disorder (ADHD)	69	62	61	70
Both LD/ADHD	23	25	12	39
Chronic Illness/Medical	37	33	10	13
Multiple Disabilities	38	30	11	24
Other	10	15	8	20
<b>TOTAL</b>	<b>450</b>	<b>420</b>	<b>281</b>	<b>391</b>

**Source:** Georgia Perimeter College Office of Disability Services, as reported to Board of Regents of the University System of Georgia.

**Note:** Reporting year begins in Summer and ends with Spring semester. Table shows number of students for whom accommodations or services were provided.

# Funding and Facilities

---



# Student Tuition and Fees, FY 2001-2002

Tuition (per hour)	
In-State	\$53.00
Out-of-State	\$213.00
Required Fees	
Application (one time only)	\$20.00
Parking	\$8.00
Student Activity (except Rockdale Center)	\$42.00
Student Activity (Rockdale Center)	\$20.00
Student Athletic	\$27.00
Technology	\$38.00
Special Fees	
Applied Music	\$75.00
Dental Hygiene Insurance	\$8.00
Late Payment	\$38.00
Nursing Insurance/Test	\$15.00
Tele Course	\$50.00
International Student Health Insurance (F1 Visa only)	\$265.00

## Tuition and Fees

Georgia Perimeter College students are responsible for tuition and fees which are set each year. Fees include student activity, athletic, parking, technology, and other special fees. Tuition and fees are due each semester at the time of registration. Registration is not complete until all fees are paid. Payment may be in cash, by check payable in U.S. currency, or with a Visa or Mastercard. The College will withhold copies of transcripts and other student records

and/or revoke the enrollment of students who owe the College money.

Fees and expenses are subject to change without notice.

Most fees are assessed for on-campus students only. Instruction delivered at Clarkston, Lawrenceville, Dunwoody, and Decatur is considered on-campus. Instruction at the Rockdale and Alpharetta Centers and other locations or by distance education is considered off-campus.

The precise amount of a student's fees for a semester depends upon a number of factors:

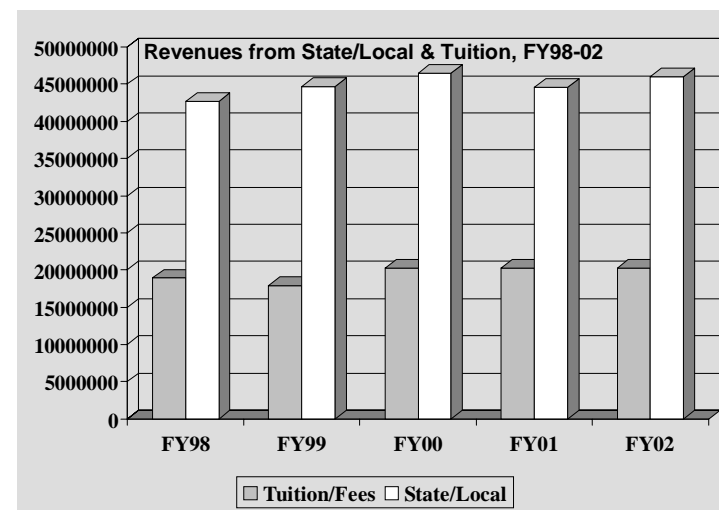
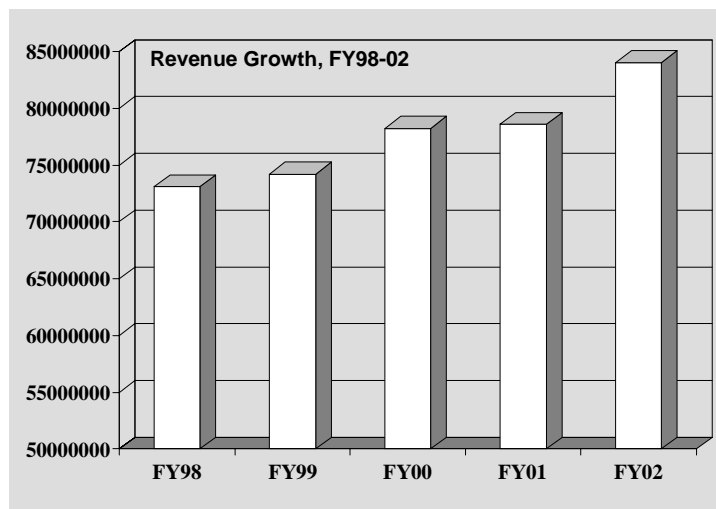
- The number of courses taken
- The nature of the courses
- The location at which the courses are taught
- The number of credit hours assigned to the courses
- The residence status of the student

It is the responsibility of the student to be informed of and observe all regulations and procedures regarding the payment of fees and the entitlement of refunds.

# Revenues and Expenditures Per Student, FY 1998-2002

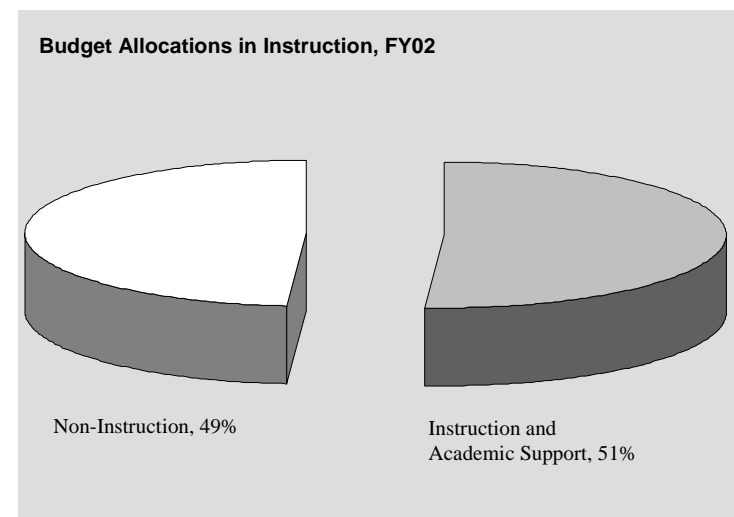
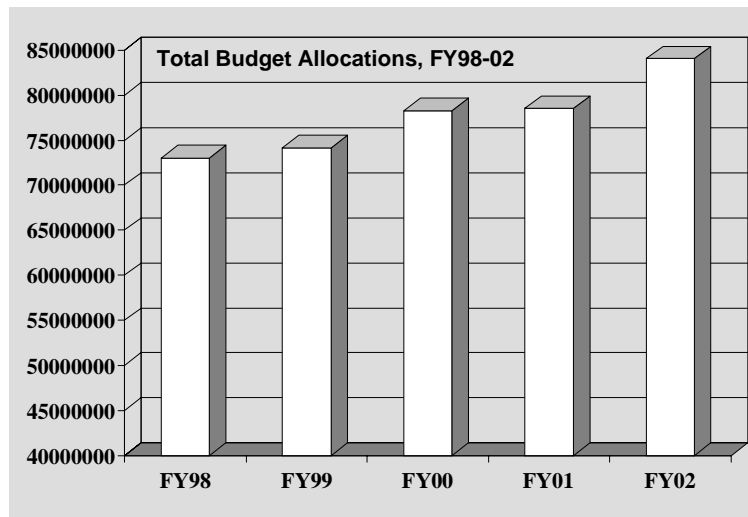
Revenues	FY98	FY99	FY00	FY01	FY02 Budget
Tuition and Fees	\$18,921,251	\$17,908,958	20,239,642	20,312,710	20,247,000
State/Local Appropriations	42,705,702	44,671,732	46,434,007	44,571,384	46,019,079
Other Income	295,041	348,563	120,461	479,789	253,000
Departmental Sales & Services	1,201,694	1,259,420	1,458,953	995,080	2,500,000
Sponsored Operations	9,963,665	10,015,886	9,981,371	12,215,133	15,000,000
<b>Total Revenues</b>	<b>\$73,087,353</b>	<b>\$74,204,559</b>	<b>\$78,234,434</b>	<b>78,574,096</b>	<b>84,019,079</b>

Expenditures Per Student	FY98	FY99	FY00	FY01	FY02 Budget
EFT Students	8,863	8,219	8,295	8,438	9,699
Expenditure per EFT Student (excluding sponsored)	\$7,113	\$7,819	\$8,177	\$7,864	\$7,116



# Budget Allocations, FY 1998-2002

Allocations	FY98	FY99	FY00	FY01	FY02 Budget
Instruction	\$31,206,249	\$30,613,754	\$33,163,209	\$33,909,782	\$35,117,501
Public Service		202,819	84,004	84,337	91,204
Academic Support	6,655,918	6,721,191	7,031,388	7,308,239	7,566,875
Student Services	6,669,103	6,710,204	6,907,270	6,007,547	6,582,506
Institutional Support	11,479,365	12,826,233	13,935,643	12,144,366	14,543,324
Plant Operations	7,027,642	7,172,913	6,709,646	6,904,692	7,847,301
Sponsored Operations	9,963,665	9,889,774	10,399,888	12,155,452	15,000,000
Budget Reduction					(2,729,632)
<b>Total Allocations</b>	<b>\$73,001,942</b>	<b>\$74,136,888</b>	<b>78,231,048</b>	<b>78,514,415</b>	<b>84,019,079</b>



## Library Collections, FY 1997-01

<b>Library Collections</b>	<b>FY97</b>	<b>FY98</b>	<b>FY99</b>	<b>FY00</b>	<b>FY01</b>
<b>Holdings</b>					
Paper Volumes	232,671	209,953	206,923	211,844	232,246
Paper Titles	151,775	156,165	158,993	158,125	179,449
Serial Subscriptions	1,073	1,073	1,070	2,032	1,681
Number of Microforms	32,397	33,780	35,000	36,511	38,073
Electronic Titles		351	500		
<b>Expenditures</b>					
Materials: Paper & Microforms	\$121,517	\$269,282	\$400,543	\$249,748	\$255,609
Current Serial: Paper & Microforms	129,228	132,833	91,631	155,647	154,263
Audio-Visual Materials	\$31,985	\$31,944	\$26,533	\$24,494	\$33,034
<b>Circulation</b>					
General Collection	110,614	97,318	63,930	69,472	47,214
Reserve Collection		16,793	8,888		6,525
<b>Interlibrary Loans</b>					
To Other Libraries	1,375	1,374	522	764	724
From Other Libraries	254	275	183	179	184

## Classrooms in Use by Campus, Day, and Hour, Fall 2001

Day & Hour	Clarkston (32 general rooms)		Dunwoody (49 general rooms)		Decatur (14 general rooms)		Lawrenceville (20 general rooms)		Rockdale (12 general rooms)	
	#	%	#	%	#	%	#	%	#	%
MWF										
8:00-9:10AM	28	88%	38	78%	9	64%	20	100%	7	58%
9:25-10:35AM	32	100%	46	94%	13	93%	20	100%	9	75%
10:40-11:50AM	32	100%	47	96%	13	93%	20	100%	10	83%
MW										
8:00-9:40AM	30	94%	47	96%	11	79%	20	100%	9	75%
10:00-11:40AM	32	100%	47	96%	14	100%	20	100%	10	83%
1:40-3:25PM	20	63%	29	59%	4	29%	17	85%	2	17%
3:30-5:10PM	7	22%	20	41%	1	7%	15	75%	1	8%
5:20-7:00PM	27	84%	35	71%	9	64%	20	100%	11	92%
7:10-8:50PM	21	66%	34	69%	6	43%	20	100%	11	92%
8:55-10:40PM	4	13%	6	12%	3	21%	9	45%	2	17%
TR										
8:00-9:40AM	27	84%	42	86%	12	86%	20	100%	10	83%
10:00-11:40AM	30	94%	48	98%	13	93%	20	100%	10	83%
11:55-1:35PM	30	94%	46	94%	10	71%	20	100%	7	58%
1:40-3:25PM	19	59%	30	61%	2	14%	19	95%	1	8%
3:30-5:10PM	6	19%	14	29%	0	0%	13	65%	1	8%
5:20-7:00PM	25	78%	36	73%	12	86%	20	100%	2	17%
7:10-8:50PM	19	59%	30	61%	8	57%	19	95%	11	92%
8:55-10:40PM	2	6%	5	10%	1	7%	9	45%	3	25%

## Buildings, Improvement & Renovations, FY 01-02

Campus	Building	Improvement & Renovation Projects	Improvement & Renovation Costs
<b>Clarkston</b>	Campus	Tennis Court Lighting	\$44,500
	CH	District Admissions Renovations	\$38,685
	CH	Nursing Computer Lab Renovation	\$59,450
	CG	Boiler Replacement	\$217,448
	Various	Carpeting	\$102,525
<b>Decatur</b>	SC	Soapstone Room & Student Affairs Renovation	\$103,490
	Various	Carpeting	\$65,163
	SB	Geology/Astronomy Lab Renovation	\$88,700
	SA	Administrative Building Renovation	\$422,400
<b>Dunwoody</b>	NA	HVAC Renovations	\$209,500
	NC	Geology Lab Renovation	\$138,820
	Campus	Replace Underground Gas Piping	\$30,386
	Various	Carpeting	\$44,810
	Campus	Physical Education Building	\$862,000
<b>Lawrenceville</b>	None		
<b>Rockdale</b>	RA	Carpeting	\$2,857
<b>College-Wide</b>	Various	Elevator Upgrades – All Campuses	\$148,478
	Various	Electrical Grounding	\$85,897

**Note: All the codes in the table have two capital letters. The first is the code for campus and the second code for building.**

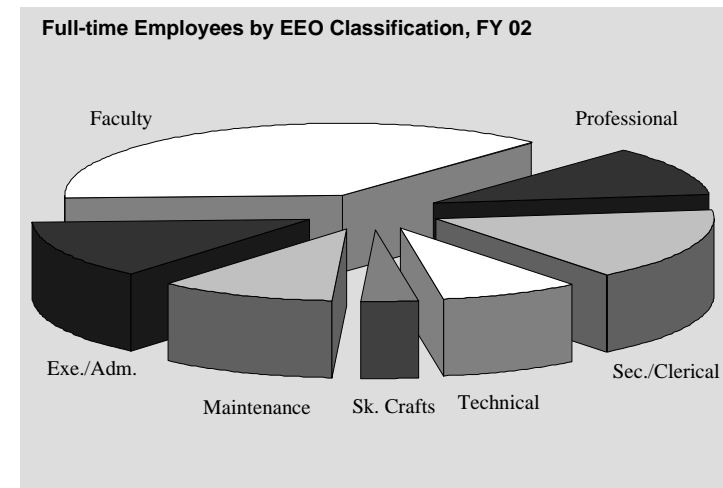
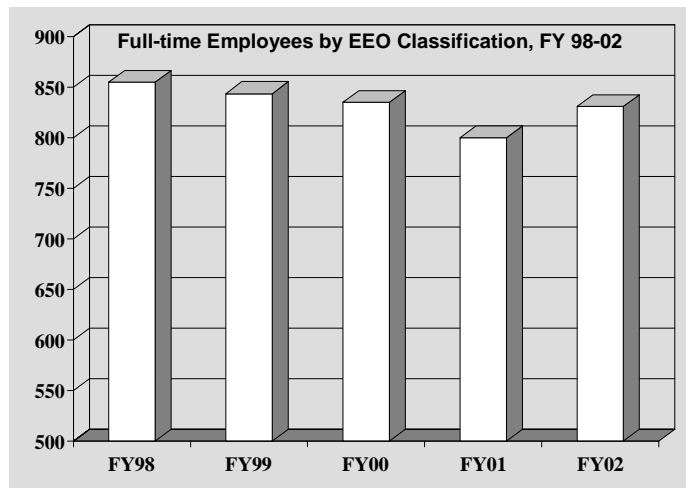
# Employees

---



# Full-Time Employees by EEO Classification, FY 1998-2002

EEO Category	1998	1999	2000	2001	2002
Executive/Administration/Managerial	104	104	102	110	115
Faculty	312	303	325	312	310
Professional Staff	98	94	88	83	92
Secretarial/Clerical	164	163	135	123	136
Technical/Paraprofessional	43	47	56	59	66
Skilled Crafts	33	32	31	25	27
Service Maintenance	101	101	98	88	85
<b>Totals</b>	<b>855</b>	<b>844</b>	<b>835</b>	<b>800</b>	<b>831</b>



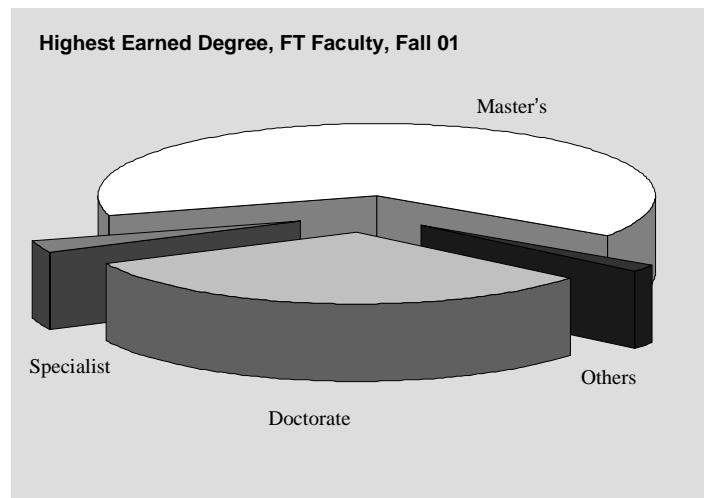
## Corps of Instruction – All Campuses, Fall 2001

	Instructional Faculty	Library Faculty	Dept. Head/ Coor./Acad. Dir.	Deans Academic	Other Members of the Corps	Total
<b>Rank</b>						
Professor	22	0	3	3	0	28
Assoc. Professor	105	1	15	1	2	124
Asst. Professor	107	2	9	0	1	119
Instructor	75	6	2	0	1	84
Unranked	1	2	6	0	8	17
<b>Gender</b>						
Male	128	4	13	1	5	151
Female	182	7	22	3	7	221
<b>Race</b>						
Asian	13	0	0	0	1	14
Black	60	3	7	0	5	75
Hispanic	6	0	0	0	0	6
Native American	2	0	0	0	0	2
Multiracial	1	0	0	0	0	1
White	228	8	28	4	6	274
<b>Tenure</b>						
Tenured	193	0	17	3	2	215
On Track	84	0	5	1	0	90
Not Eligible*	33	11	13	0	10	67
<b>Highest Degree</b>						
Doctorate	98	2	12	4	7	123
Specialist	9	0	0	0	0	9
Master's	198	9	20	0	4	231
Bachelor's	5	0	3	0	1	9
<b>Total</b>	<b>310</b>	<b>11</b>	<b>35</b>	<b>4</b>	<b>12</b>	<b>372</b>

\*Not eligible/not on track

## Highest Earned Degree, Full-Time Instructional Faculty, Fall 2001

Academic Area	Doctorate	Specialist	Master's	Others	Total
Business Administration	3	0	20	0	23
Fine Arts	1	1	7	0	9
Foreign Language	3	0	8	0	11
Health Sciences/Physical Education	4	2	22	1	29
Humanities/Honors	26	0	69	0	95
Math/Computer Science	8	4	45	1	58
Science	23	1	9	0	33
Social Sciences	28	1	15	0	44
Interpreter Training	0	0	0	3	3
Unclassified	2	0	3	0	5
<b>Total</b>	<b>98</b>	<b>9</b>	<b>198</b>	<b>5</b>	<b>310</b>
<b>% of FT Faculty</b>	<b>31.6%</b>	<b>2.9%</b>	<b>63.9%</b>	<b>1.6%</b>	<b>100.0%</b>



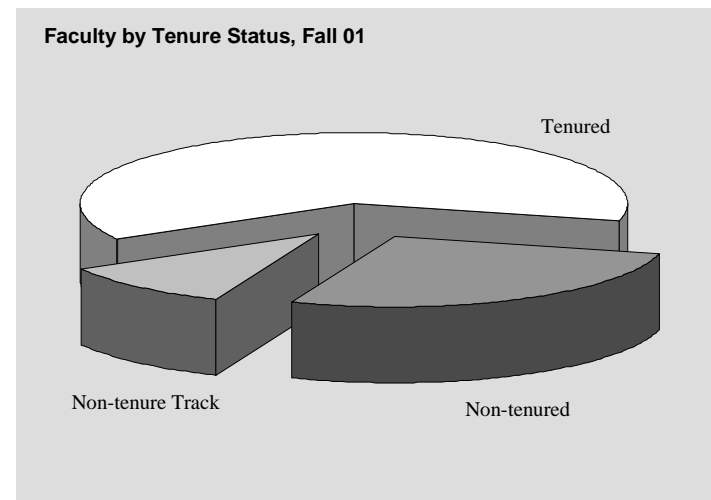
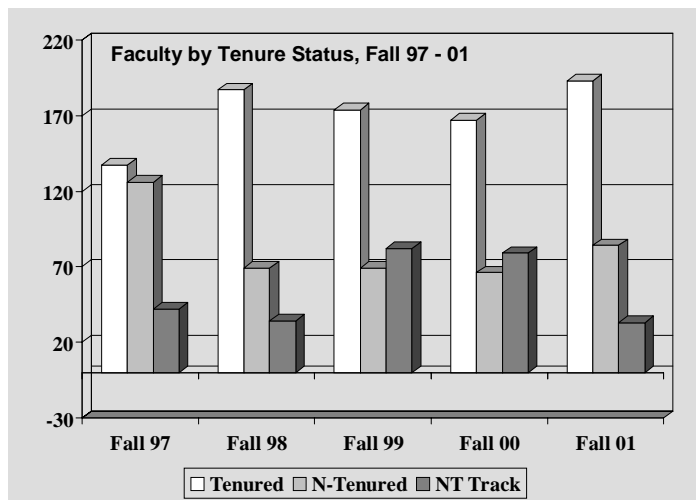
# Faculty Distribution by Rank and Race, Fall 1997-01

Academic Rank	Fall 97		Fall 98		Fall 99		Fall 00		Fall 01	
	#	%	#	%	#	%	#	%	#	%
<b>Professor</b>	17	6%	20	7%	15	5%	18	6%	21	7%
Asian	0	0%	0	0%	0	0%	0	0%	0	0%
Black	0	0%	0	0%	0	0%	0	0%	1	5%
Hispanic	0	0%	0	0%	0	0%	0	0%	0	0%
Native American	0	0%	0	0%	0	0%	0	0%	0	0%
White	17	100%	20	100%	15	100%	18	100%	20	95%
<b>Associate Professor</b>	80	26%	78	27%	73	22%	67	22%	106	34%
Asian	3	4%	3	4%	3	4%	3	5%	4	4%
Black	10	13%	11	14%	10	14%	9	13%	13	12%
Hispanic	1	1%	3	4%	3	4%	3	5%	2	2%
Native American	0	0%	0	0%	1	1%	1	2%	1	1%
White	66	83%	61	78%	56	77%	51	76%	86	81%
<b>Assistant Professor</b>	161	53%	149	51%	147	45%	141	45%	109	35%
Asian	4	2%	5	3%	5	3%	5	4%	6	6%
Black	30	19%	31	21%	30	20%	29	21%	26	24%
Hispanic	2	1%	1	1%	1	1%	1	1%	3	3%
Native American	0	0%	0	0%	0	0%	0	0%	0	0%
White	125	78%	112	75%	111	76%	106	75%	75	69%
<b>Instructor</b>	47	15%	42	14%	86	26%	86	28%	72	23%
Asian	2	4%	2	5%	6	7%	5	6%	3	4%
Black	18	38%	10	24%	24	28%	21	24%	20	28%
Hispanic	1	2%	2	5%	2	2%	1	1%	1	1%
Native American	0	0%	0	0%	0	0%	0	0%	1	1%
Multiracial							1	1%	1	1%
White	26	55%	28	67%	53	62%	58	67%	46	64%
<b>Unranked</b>	0	0%	1	0%	4	1%			2	1%
Asian	0	0%	0	0%	0	0%			0	0%
Black		0%	1	100%	0	0%			0	0%
Hispanic	0	0%	0	0%	0	0%			0	0%
Native American	0	0%	0	0%	0	0%			0	0%
White	0	0%	0	0%	4	100%			2	100%
<b>Temporary*</b>									17	6%
Black									6	35%
White									11	65%
<b>Total</b>	<b>305</b>		<b>290</b>		<b>325</b>		<b>312</b>		<b>310</b>	<b>100%</b>

\* Note: GPC employed 17 temporary faculty members in Fall 2001.

# Faculty Distribution by Tenure Status, Fall 1997-01

Year	Tenured		Non-Tenured		Non-Tenure Track		Total
	#	%	#	%	#	%	#
Fall 97	137	47	126	43	42	14	305
Fall 98	187	64	69	24	34	12	290
Fall 99	174	54	69	21	82	25	325
Fall 00	167	54	66	21	79	25	312
Fall 01	193	62	84	27	33	11	310



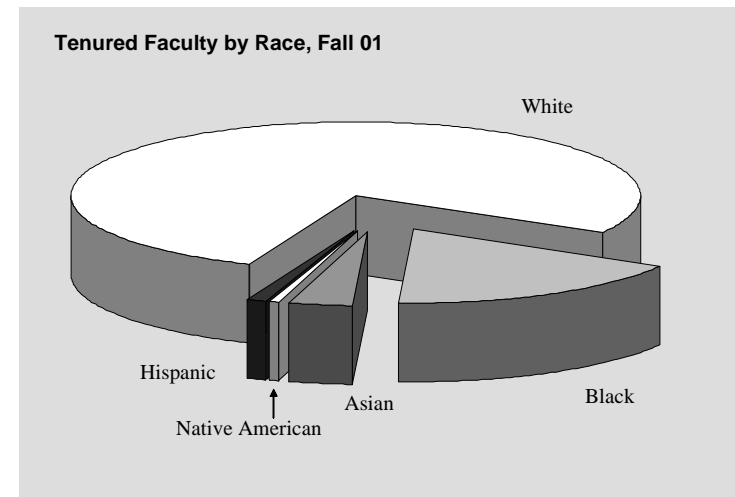
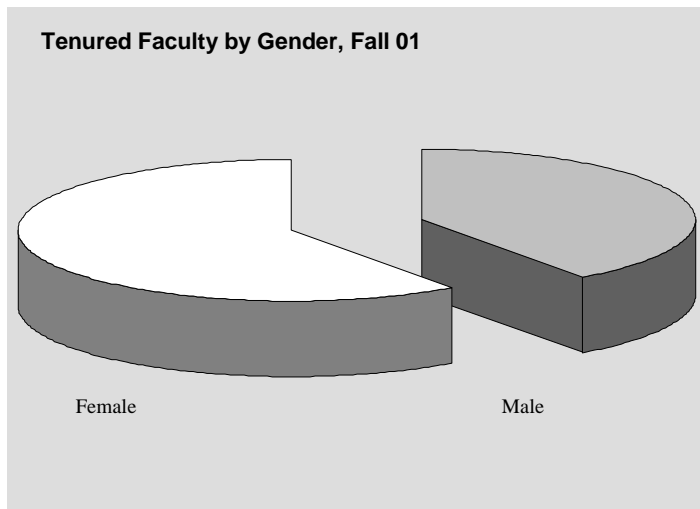
# Tenure Status by Academic Area, Gender, & Race, Fall 2001

Academic	Tenured	Non-Tenured	NT Track	Total
Business	17	4	2	23
Fine Arts	6	3	0	9
Foreign Languages	5	4	2	11
Health Sci./Phys. Ed.	19	8	2	29
Humanities/Honor	60	24	11	95
Math/CS/ENGR	37	17	4	58
Science	25	8	0	33
Social Sciences	25	17	2	44
Interpreter Training	0	0	3	3
Unclassified	0	1	4	5
<b>Total</b>	<b>193</b>	<b>84</b>	<b>33</b>	<b>310</b>

Gender	Tenured	Non-Tenured	NT Track	Total
Male	77	35	16	128
Female	116	49	17	182
<b>Total</b>	<b>193</b>	<b>84</b>	<b>33</b>	<b>310</b>

Race	Tenured	Non-Tenured	NT Track	Total
Black	34	15	11	60
Asian	7	5	1	13
Native American	1	0	1	2
Hispanic	2	3	1	6
White	149	60	19	228
Multiracial	0	1	0	1
<b>Total</b>	<b>193</b>	<b>84</b>	<b>33</b>	<b>310</b>



## Faculty Workload by Area, Fall 2000 vs 2001; by Campus, Fall 2001

Area	Sections Taught		Students Taught		FTF	PTF	Average Class Size		Part-time %	
	Fall 00	Fall 01	Fall 00	Fall 01	Classes Fall 01	Classes Fall 01	Fall 00	Fall 01	Fall 00	Fall 01
Business	174	186	4,177	4,763	100	86	24	26	43.1%	46.2%
Dental Hygiene	8	8	189	188	7	1	24	24	0.0%	12.5%
ENSL & For. Lang.	118	130	2,033	2,394	72	58	17	18	38.1%	44.6%
Fine Arts	55	70	1,089	1,367	30	40	20	20	43.6%	57.1%
Fire Science	3	2	22	23	1	1	7	12	66.7%	50.0%
Higher Ed. Seminars	21	19	366	402	9	10	17	21	57.1%	52.6%
Humanities	592	631	11,935	13,093	333	298	20	21	41.7%	47.2%
Interpreter Training	15	19	115	193	9	10	8	10	26.7%	52.6%
Mathematics & CS	356	368	7,864	9,423	248	120	22	26	32.6%	32.6%
Nursing	13	6	495	413	6	0	38	69	0.0%	0.0%
Physical Education	93	113	1,920	2,374	69	44	21	21	41.9%	38.9%
Science	276	286	5,503	6,434	162	124	20	22	42.4%	43.4%
Social Sciences	289	311	8,124	9,142	190	121	28	29	40.8%	38.9%
<b>College Total</b>	<b>2,013</b>	<b>2,149</b>	<b>43,832</b>	<b>50,209</b>	<b>1,236</b>	<b>913</b>	<b>22</b>	<b>20</b>	<b>39.7%</b>	<b>42.5%</b>
Campus	Sections Taught Fall 01	Students Taught Fall 01	FTF Classes Fall 01	PTF Classes Fall 01	Average Class Size, Fall 01	Part-time % Fall 01				
Clarkston	643	14,425	394	249	22	38.7%				
Decatur	173	3,741	116	57	22	32.9%				
Dunwoody	724	17,119	412	312	24	43.1%				
Lawrenceville	478	12,155	265	213	25	44.6%				
Rockdale	131	2,769	49	82	21	62.6%				



# Quick References for GPC

---



# Quick Reference I for Georgia Perimeter College

## Number of Students On & Off Campus, Fall 2001

<b>Total Headcount (Unduplicated)</b>	<b>15,372</b>
Headcount by Gender: Male	5,948
Female	9,424
Headcount by Race: Asian	1,461
Black	4,978
Hispanic	548
Multiracial	575
Native American	45
White	7,765
Headcount by Campus: Clarkston	4,709
Decatur	1,379
Dunwoody/Alpharetta	5,374
Lawrenceville	3,602
Rockdale	906
Off campus/Distance Education	1,721
<b>Equivalent Full-Time</b>	<b>9,699</b>
<b>Total Cont. &amp; Corp. Ed. Participants</b>	<b>4,998</b>

## Degrees Awarded FY 2001

<b>Total Awarded</b>	<b>860</b>
Associate of Arts	80
Associate of Science	635
Associate of Applied Science	19
Certificate	9
Career Program	117

## Degrees by Campus

Clarkston	309
Lawrenceville	195
Dunwoody	271
Decatur/Rockdale	85

## Degrees by Race

Asian	64
Black	213
Hispanic	25
Multiracial	21
Native American	4
White	533

## Enrollment by County Fall 2001

Cherokee	65
Clarke	29
Clayton	254
Cobb	577
DeKalb	3,569
Douglas	53
Fayette	26
Forsyth	107
Fulton	2,018
Gwinnett	3,903
Henry	92
Newton	227
Rockdale	585
Walton	224
Others in-State	413
Out-of-State	3,230

## Tuition and Fees FY 2001-02

<b>Tuition (per hour)</b>	
In-State	\$53.00
Out-of-State	\$213.00
<b>Required Fees</b>	
Application (one time only)	\$20.00
Parking	\$8.00
Student Activity (except Rockdale)	\$42.00
Student Activity (Rockdale)	\$20.00
Student Athletic	\$27.00
Technology	\$38.00
<b>Special Fees</b>	
Applied Music	\$75.00
Dental Hygiene Insurance	\$8.00
Late Payment	\$38.00
Nursing Insurance/Test	\$15.00
Tele Course	\$50.00
Int'l Student Health Insurance	\$265.00

## Full-Time Employees FY 2002

Executive/Adm./Managerial	115
Faculty	310
Professional Staff	92
Secretarial/Clerical	136
Technical/Paraprofessional	66
Skilled Crafts	27
Service Maintenance	85
<b>Totals</b>	<b>831</b>



# Quick Reference II for Georgia Perimeter College

Georgia Demographics	
<b>Population 2000</b>	8,186,453
<b>Population by Race*</b>	
Asian, Hawaiian, and Islander	2.2%
Black	28.7%
Hispanic	5.3%
Native American	0.3%
White	62.6%
Multi-racial and Other Race	3.8%
<b>Population by Age</b>	
Under 5	7.3%
Under 18	26.5%
18-64	56.6%
65 and over	9.6%
<b>Educational Attainment for Adult 25 Years Old and Over, 2000</b>	
High School Graduates	2,853,605
College Graduates	777,158
<b>Income and Poverty, 1998</b>	
Personal Income Per Capita	\$22,201
Median Household Income	\$38,665
Percent below Poverty Level	13.6%
<b>Labor Force</b>	
Civilian Popu. Employed 97	66.2%

Non-farm Employment 98 (in Manufacturing)	15.9%
Average Annual Pay	\$29,020
<b>State Government</b>	
General Revenue Per Capita 97	\$2,632
<b>State Education Enrollment Rate</b>	
Public Elementary-Secondary 96	96.3%
FT College, Percent of total 96	67.3%

**Note:** 1. Elementary-Secondary enrollment rate is percentage of people 5-17 years old.  
 2. Full-time College enrollment rate is for school year ending in June the following year.  
 3. \*The percentages of Population by Race may not add to 100% because of multiple reporting.

Population Projection 2000 - 2025					
	White	Black	Native Am	Asia	Total
00	69%	29%	0.2%	2.0%	7,874,792
05	68%	30%	0.2%	2.0%	8,412,686
10	67%	31%	0.2%	2.1%	8,823,902
15	66%	32%	0.2%	2.2%	9,199,751
20	65%	33%	0.2%	2.4%	9,551,672
25	64%	34%	0.2%	2.5%	9,869,427

Population of Counties in the GPC Service Region 2000	
Cherokee	141,903
Clarke	101,489
Clayton	236,517
Cobb	607,751
DeKalb	665,865
Douglas	92,174
Fayette	91,263
Forsyth	98,407
Fulton	816,006
Gwinnett	588,448
Henry	119,341
Newton	62,001
Rockdale	70,111
Walton	60,687
<b>Total Population of the Region</b>	<b>3,751,963</b>

Sources: 1. U.S. Census Bureau 2000, various publications, except population projection  
 2. Selig Center, University of Georgia, *Projected Population by Race, Georgia, 1995-2025*

# A Directory for Georgia Perimeter College

## GPC District Offices

VP Educational Affairs	404-244-2371
Accounting	404-244-2269
Admissions and Records	404-299-4564
Alumni Relations	404-244-5704
Athletics	770-551-3196
Continuing and Corporate Education	404-294-3593
Disability Services	404-299-4038
Distance Learning	404-294-3494
Financial Aid	404-299-4006
Human Resources	404-244-5934
ID Card Services	404-294-3597
International Center	404-298-4830
Institutional Research and Planning	404-244-2261
Public Relations	404-244-2265
Recruitment and Retention	404-299-4078
Student Accounts	404-244-5020

## GPC Campus Offices

<b>Clarkston</b>	
Registrar and Admissions	404-299-4035
Financial Aid	404-299-4006
Student Accounts	404-299-4030

## GPC Campus Offices

<b>Decatur</b>	
Registrar and Admissions	404-244-5036
Student Accounts	404-244-5020
Financial Aid	404-244-2983
<b>Dunwoody/Alpharetta</b>	
Registrar and Admissions	770-551-3010
Student Accounts	770-551-3023
Financial Aid	770-551-7287
<b>Lawrenceville</b>	
Registrar and Admissions	678-407-5315
Student Accounts	678-407-5317
Financial Aid	678-407-5134
<b>Rockdale</b>	
Advising and Counseling	770-785-6970
Student Accounts	770-785-6990