

Preface

The 2002-2003 edition of *The Georgia Perimeter College Fact Book* provides a comprehensive statistical picture of Georgia Perimeter College. This book presents enrollment, faculty and staff data, financial reports, and other information for Georgia Perimeter College and its campuses at Clarkston, Decatur, Dunwoody, Lawrenceville, and the Alpharetta and Rockdale Centers.

All enrollment data is based on students enrolled on October 14, 2002. All administrative and academic information is based on data as of October 31, 2002, except organizational charts that reflect the most recent changes and are effective July 1, 2003. All fiscal year data are collected as of June 30, 2002. The definitions and guidelines used in this book are consistent with the Integrated Post-secondary Education Data System (IPEDS) and policies of the Board of Regents of the University System of Georgia. All the data sources, unless noted, are from GPC's Institutional Research and Planning Office.

The *Georgia Perimeter College Fact Book 2002-2003* is a publication produced by the Office of Institutional Research and Planning. It is also a product of cooperative efforts of the many offices and campuses of GPC. Mr. Ron Carruth, Executive Vice President of Finance and Administration, gave invaluable direction and support to the whole process. Mr. Wade Marbaugh, Ms. Lynn Parker, Mr. Ron Carruth, Dr. Godfrey Noe, Ms. Angela Banks-Mitchell, and Ms. Lashay Taylor provided thorough proofreading of the Fact Book. Their efforts are gratefully acknowledged.

The electronic version of the *Fact Book* is accessible to the public on the World Wide Web via Georgia Perimeter College's home page at www.gpc.edu or directly at <http://www.gpc.edu/~irp/>.

Inquiries and comments concerning this document are sincerely welcome and may be directed to the Institutional Research and Planning Office (College District Offices, 3251 Panthersville Road, Decatur, GA 30034; Phone: 404-244-2261; Fax: 404-244-2373; E-mail at lfincher@gpc.edu).

Kuan R. Yang, Ph.D., Director, Institutional Research and Planning
Angela Banks-Mitchell, Information Analyst, Institutional Research and Planning
Lashay Taylor, Administrative Secretary, Institutional Research and Planning

President's Message

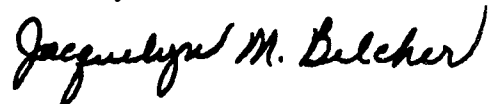
Greetings! I hope you enjoy the Georgia Perimeter College Fact Book 2002-2003. In this volume you will find the information you need to better understand Georgia Perimeter College and its academic programs, students, faculty and services.

Since the preparation of our previous fact book, the Southern Association of Colleges and Schools (SACS) awarded Georgia Perimeter College an outstanding report and renewed the institution's accreditation. The extensive investigation and superlative review by SACS underscores the College's commitment to providing an accessible and affordable high quality education to Metro Atlanta students.

The Fact Book gives both the big picture of Georgia Perimeter College and minute details. Hopefully, these statistics reflect not only the current trends, but also the College's greatest asset, the power of the human spirit. We are a community of talented students taught by dedicated faculty in outstanding programs of study. Students of diverse ages, races and ethnic backgrounds attend GPC because of its active commitment to diversity. As the largest associate-degree granting institution of the University System of Georgia, we served 17,573 collegiate students in fall 2002 and 5,511 continuing and corporate education students in fiscal year 2003. Our students also include 2,895 international students from 145 different nations.

Thanks to all who contribute to make Georgia Perimeter College a great place to start a college career, begin a second career, upgrade work skills or take courses to enrich one's life.

Sincerely,



Dr. Jacquelyn M. Belcher
President, Georgia Perimeter College

Table of Contents

Preface	i	Degrees Awarded Summary, FY 1996-2002	26
President's Message	ii	Degrees Awarded by Campus, FY 2002	27
Table of Contents	iii	Degrees Awarded by Ethnicity and Gender, FY 2002	28
		Degrees Awarded by Major, FY 2002	29
ORGANIZATION	1	Students Taught by Program by Campus, Fall 2002	30
Mission Statement	3	Continuing and Corporate Education Fall 1998-2002	31
History	5		
Board of Regents	6	STUDENTS	33
Chief Executive Officer, Vice Presidents, and Provosts	7	Enrollment Summary I – All Campuses, Fall 96-02	35
Administrative Organizational Chart	8	Enrollment Summary II – All Campuses, Fall 96-02	36
College Executive Team	9	Enrollment of GPC Clarkston, Fall 96-02	37
Financial and Administrative Affairs Team	10	Enrollment of GPC Clarkston, Fall 96-02 (Continued)	38
Educational Affairs Team	11	Enrollment of GPC Decatur, Fall 96-02	39
Advancement & External Affairs Team	12	Enrollment of GPC Decatur, Fall 96-02 (Continued)	40
Clarkston Campus Team	13	Enrollment of GPC Dunwoody, Fall 96-02	41
Decatur Campus/Rockdale Center Team	14	Enrollment of GPC Dunwoody, Fall 96-02(Continued)	42
Dunwoody Campus/Alpharetta Center Team	15	Enrollment of GPC Lawrenceville, Fall 96-02	43
Lawrenceville Campus Team	16	Enrollment of GPC Lawrenceville, Fall 96-02 (Continued)	44
Geographic Locations of the GPC Campuses	17	Enrollment of GPC Rockdale, Fall 96-02	45
Maps of Alpharetta Center and Clarkston Campus	18	Enrollment of GPC Rockdale, Fall 96-02 (Continued)	46
Maps of Decatur and Dunwoody Campuses	19	Enrollment of GPC Off Campus/Distance Education, Fall 96-02	47
Maps of Lawrenceville Campus & Rockdale Center	20	Enrollment of GPC Off Campus/Distance Education, Fall 96-02 (Continued)	48
GPC Off-Campus Sites for Fall 2002	21	Enrollment by Age Group, Fall 1998-2002; and by County, Fall 2002	49
ACADEMICS	23		
Academic Programs Offered, FY 2003	25		

Table of Contents (Continued)

High Schools Attended by 90 or More, Fall 01-02	50	EMPLOYEES	69
International Student Enrollment I, Fall 1999-2002	51		
International Student Enrollment II, Fall 1999-2002	52	Full-Time Employees by EEO Classification, FY 1999-2003	71
Retention Rate, Fall 2001; Enrollment by Class Size FY 96-02	53	Corps of Instruction-All Campuses, Fall 2002	72
Student Financial Aid Awarded by Source, FY 98-02	54	Highest Earned Degree, Full-Time Instructional Faculty, Fall 2002	73
Entering Freshman SAT, Fall 98-02; Regents' Test, Fall 02	55	Faculty Distribution by Rank and Race, Fall 1998-02	74
Applications Received, Fall 1998-2002		Faculty Distribution by Tenure Status, Fall 1998-02	75
Testing Activities, FY 1998-2002	56	Tenure Status by Academic Area, Gender, & Race, Fall 2002	76
Semester Credit Hour Report, GPC & USG FY 01-03	57	Faculty Workload by Area, Fall 2001 vs 2002; By Campus, Fall 2002	77
Comparison with Other USG Two-Year Colleges, Fall 2002	58		
Athletics, FY 2002 - 03	59	QUICK REFERENCES FOR GPC	79
Students with Disabilities, from 98-99 to 02-03	60		
FUNDING AND FACILITIES	61	Quick Reference I for Georgia Perimeter College	81
Student Tuition and Fees, FY 2002-2003	63	Quick Reference II for Georgia Perimeter College	82
Revenues and Expenditures Per Student, FY 1999-2003	64	A Directory for Georgia Perimeter College	83
Budget Allocations, FY 1999-2003	65		
Library Collections, FY 1998-02	66		
Classrooms in Use by Campus, Day, and Hour, Fall 2002	67		
Buildings, Improvement & Renovations, FY 02-03	68		

Organization

Mission Statement

A community committed to learning and to becoming a preeminent associate degree-granting institution, the faculty, staff, administrators and students of Georgia Perimeter College share the following aspirations:

- To gain national recognition as a community of learners
- To assume a national leadership role in developing creative, technologically-advanced academic and student services programs
- To serve as a model for other institutions in developing collaborative partnerships to deliver public services, technical assistance, lifelong learning and economic development training

A regional, multi-campus unit of the University System of Georgia, Georgia Perimeter College strives to meet the changing expectations of our diverse collegiate and community constituencies by providing effective, innovative, lifelong educational opportunities. We are committed to diversity, continuous improvement, high academic standards and the efficient use of resources. In decision-making at all levels, the enhancement of our students' lives is our first priority.

Georgia Perimeter College, a nonresidential institution, serves diverse populations of traditional and nontraditional students in Greater Metropolitan Atlanta.

Placing learning first, we provide accessible and affordable high quality undergraduate credit and non-credit programs for students seeking to complete an associate degree, transfer to a senior college or university, prepare for immediate entry into a career, pursue personal goals or enhance current workplace skills. Our curriculum specializes in liberal arts and professional preparation and promotes international and intercultural understanding. We also serve the broader community as an educational, cultural and economic resource.

Our academic programs and student support services focus on careful assessment of our learners' abilities, achievements and needs; accommodations of their special requirements and resources; and guidance in the development and realization of their expectations and goals. We thus offer specialized sequences of courses and support programs that promote academic and personal success for students of varying levels of academic preparation. We encourage excellence in teaching, provide a technologically advanced learning environment, support innovative strategies for meeting the learning styles of all students and promote learning by engaging students actively and collaboratively.

Mission Statement (Continued)

In meeting the educational needs of the citizens of Georgia for the 21st century, we share with all other institutions in the University System of Georgia the following characteristics:

- A supportive campus climate, necessary services and leadership and development opportunities, all to educate the whole person and meet the needs of students, faculty and staff
- Cultural, ethnic, racial and gender diversity in the faculty, staff and student body, supported by practices and programs that embody the idea of an open, democratic and global society
- Technology to advance educational purposes, including instructional technology, student support services and distance education
- Collaborative relationships with other System institutions, State agencies, local schools and technical institutes, and business and industry, sharing physical, human, information and other resources to expand and enhance programs and services available to the citizens of Georgia.

Georgia Perimeter College shares the following commitments to the citizens of Georgia with other associate-degree level colleges of the University System of Georgia:

- A commitment to excellence and responsiveness within a scope of influence defined by the needs of the local area and by particularly outstanding programs or distinctive characteristics that have a magnet effect throughout the region or state
- A commitment to a teaching/learning environment, both inside and outside the classroom, that sustains institutional excellence, functions to provide University System access for a diverse student body and promotes high levels of student learning
- A commitment to a high quality general education program that supports a variety of well-chosen associate programs and prepares students for transfer to baccalaureate programs, learning support programs designed to ensure access and opportunity for a diverse student body and a limited number of certificate or other career programs to complement neighboring technical institute programs
- A commitment to public service, continuing education, technical assistance and economic development activities that address the needs, improve the quality of life and raise the educational level within the College's scope of influence
- A commitment to scholarship and creative work for the specific purposes of supporting instructional effectiveness and enhancing institutionally relevant faculty qualifications.

History

Founded by the citizens of DeKalb County and the DeKalb Board of Education under the Junior College Act of 1958, Georgia Perimeter College opened as DeKalb College with its Clarkston Campus in 1964. It was the only public junior college in the state supported and controlled by a local Board of Education. It was established in order that any resident of the DeKalb School District who held a high school diploma or its equivalent and who desired to seek two years of postsecondary education might have the opportunity to do so.

The College's Decatur (formerly known as South) Campus opened in 1972. Also beginning in 1972, students enrolled in DeKalb Area Technical School were able to enroll dually in vocational and collegiate programs, and the College was designed DeKalb Community College. As growth continued both for DeKalb County and the College, the Dunwoody (formerly North) Campus was added and began operation in 1979. DeKalb College pioneered in Georgia in open-door admissions, personalized approaches to instruction, and community-related curricula and activities.

In 1985, DeKalb Vocational-Technical School was placed under the governance of a state board for vocational-technical schools with daily operations remaining under the control of the DeKalb County School System. Students enrolled in specific Associate in Applied Science degree programs continue, however, to enroll dually in the College and technical school, now known as DeKalb Technical College.

In 1986, when DeKalb County relinquished its support, Georgia Perimeter College was accepted by the Board of Regents of the University System of Georgia as the thirty-fourth member institution.

During spring 1993, Georgia Perimeter College, in cooperation with Clayton State College, DeKalb Technical College, and Rockdale County Public Schools, formed the Rockdale Center for Higher Education, which offers both credit and non-credit courses.

In November 1997, the Board of Regents of the University System of Georgia approved changing the name of the College from DeKalb College to Georgia Perimeter College to reflect its expanding mission and its service throughout the metro Atlanta area. As part of changing the College's name, the names of the campuses were changed to identify the cities in which they are located.

In December 2001 Georgia Perimeter College's Lawrenceville Campus, along with its partners at the Gwinnett University Center, relocated from its humble beginnings at the MacCleod Industrial Park on Sugarloaf Parkway to its current 177-acre campus at 1000 University Center Lane.

The College's academic offerings correspond with curricular content and requirements of the University System of Georgia. Georgia Perimeter College also serves as a community cultural center for the performing arts in music and drama. Curricula feature transfer, learning support, career, continuing and distance education programs as well as joint educational offerings with other system institutions and state-supported technical institutions. Associate degrees are awarded to graduates who complete the two-year transfer and career programs.

Source: www.gpc.edu/News_and_Information/mission.php3#history

Board of Regents

The Board of Regents (BOR) of the University System of Georgia (USG) is composed of 16 members appointed by the Governor and confirmed by the Senate for seven-year terms. One member is appointed from each of the 11 congressional districts, and five are appointed from the state at large. The BOR exercises broad jurisdiction over all institutions of USG and establishes policies and procedures under which they operate. The BOR receives all state appropriations for the USG and allocates these appropriations to the institutions and institution-related agencies. While the BOR engages in both policy-making and administrative functions, each unit of the System has a high degree of academic and administrative autonomy.

The System currently includes 35 institutions: four research universities, two regional

universities, 11 state universities, two state colleges, 15 two-year colleges and one independent research unit. These institutions are both distinctive and interrelated. They are geographically dispersed so that approximately 96 percent of the people in Georgia reside within 35 miles of at least one university or college.

Georgia Perimeter College is an associate degree-granting college of the University System of Georgia.

Members and Terms of the BOR

- **Carter, Hugh A., Jr.**
(08/08/00-01/01/09)
- **Cater, (Mr.) Connie**
(06/18/99-01/01/06)
- **Cleaveland, William H.**
(10/04/01-01/01/09)
- **Coles, Michael J.**
(01/09/01-01/01/08)
- **Harris, Joe Frank (Chair)**
(06/18/99-01/01/06)
- **Howell, Hilton H., Jr.**

(06/15/98-01/01/04)

- **Hunt, Julie Ewing**
(01/07/97-01/01/04)
- **Jennings, W. Mansfield, Jr.**
(05/20/03-01/01/10)
- **Leebern, Donald M., Jr.**
(01/01/98-01/05/05)
- **Magill, Allene H.**
(02/13/01-01/01/08)
- **McMillan, Elridge W.**
(01/01/03-01/01/10)
- **NeSmith, Martin W.**
(06/18/99-01/01/06)
- **Pittard, Patrick S.**
(05/20/03-01/10/10)
- **Rodwell, Wanda Yancey**
(03/29/02-01/01/05)
- **Shelnut, J. Timothy**
(08/25/00-01/01/07)
- **Vigil, Allan**
(08/06/03-01/01/10)
- **White, Glenn S.**
(01/01/98-01/01/05)
- **Wooten, Joel O., Jr. (Vice Chair)**
(06/18/99-01/01/06)

Chancellor of the USG

- **Dr. Thomas C. Meredith, Ed. D.**
(Chancellor)

Chief Executive Officer, Vice Presidents, and Provosts

Chief Executive Officer

The President of Georgia Perimeter College is the chief executive and administrative officer. The President is appointed by the Board of Regents and is directly responsible to the BOR for the conduct of the institution, the development of institutional goals, the formulation of policies, and the overall well being of the College.

The President of GPC

Dr. Jacquelyn M. Belcher
1995 - present (5th president)

The Past Presidents of GPC

- 1st-Thad W. Hollingsworth (1963-1967)
- 2nd-James H. Hinson, Jr. (1967-1977)
- 3rd-W. Wayne Scott (1977-1982)
- 4th-Marvin Cole (1982-1994)
- Martha Nesbitt (Interim 1994)

The GPC Logo



Vice Presidents

Ronald L. Carruth, Executive VP,
Financial & Administrative
Affairs

Virginia Michelich, Ph.D., VP,
Educational Affairs

VP, Advancement and External
Affairs (Vacant)

Provosts

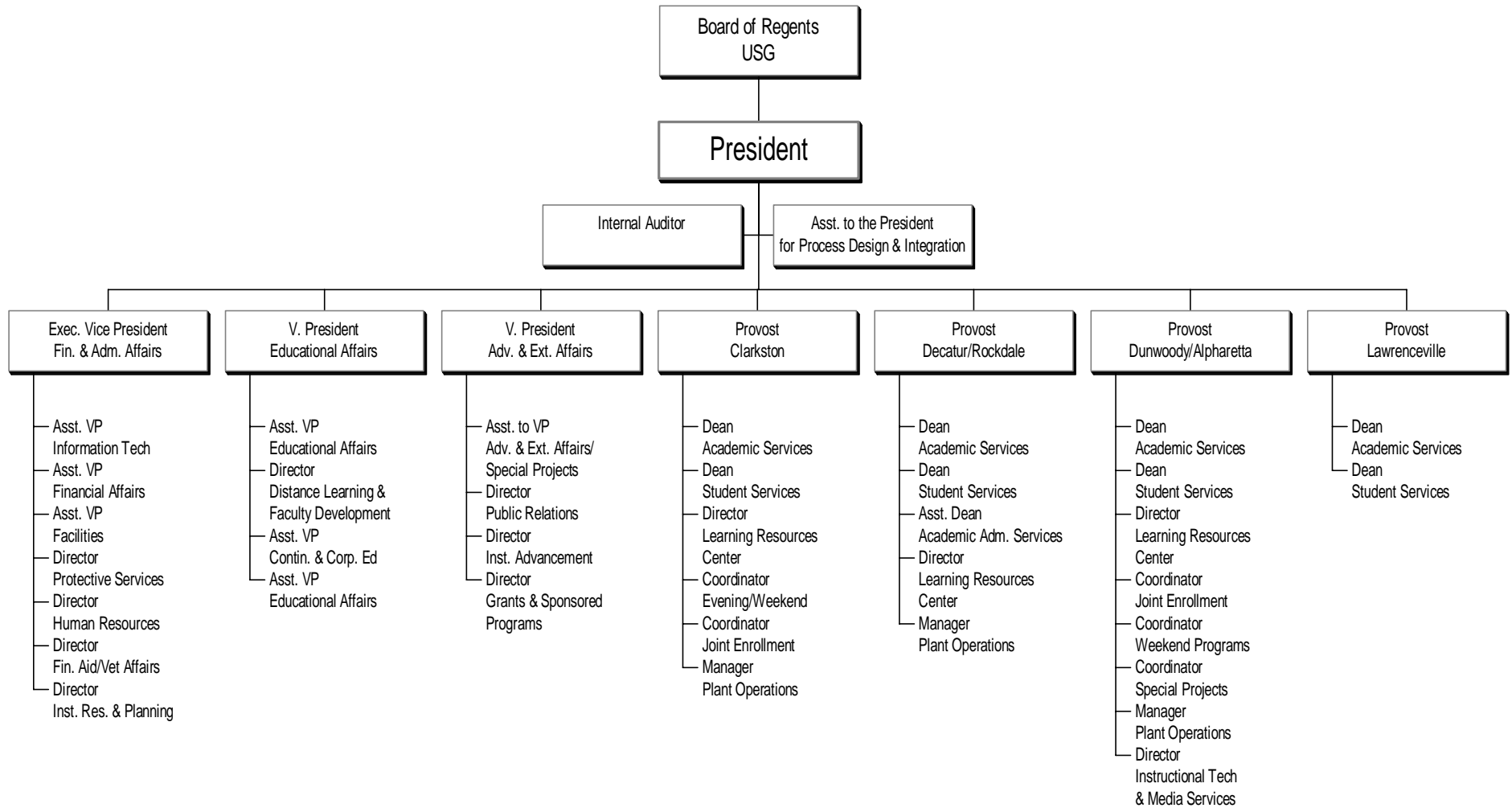
Dennis R. Harkins, Ph.D., Provost,
Clarkston Campus

Debra L. McCurdy, Ph.D., Provost,
Dunwoody Campus/Alpharetta
Center

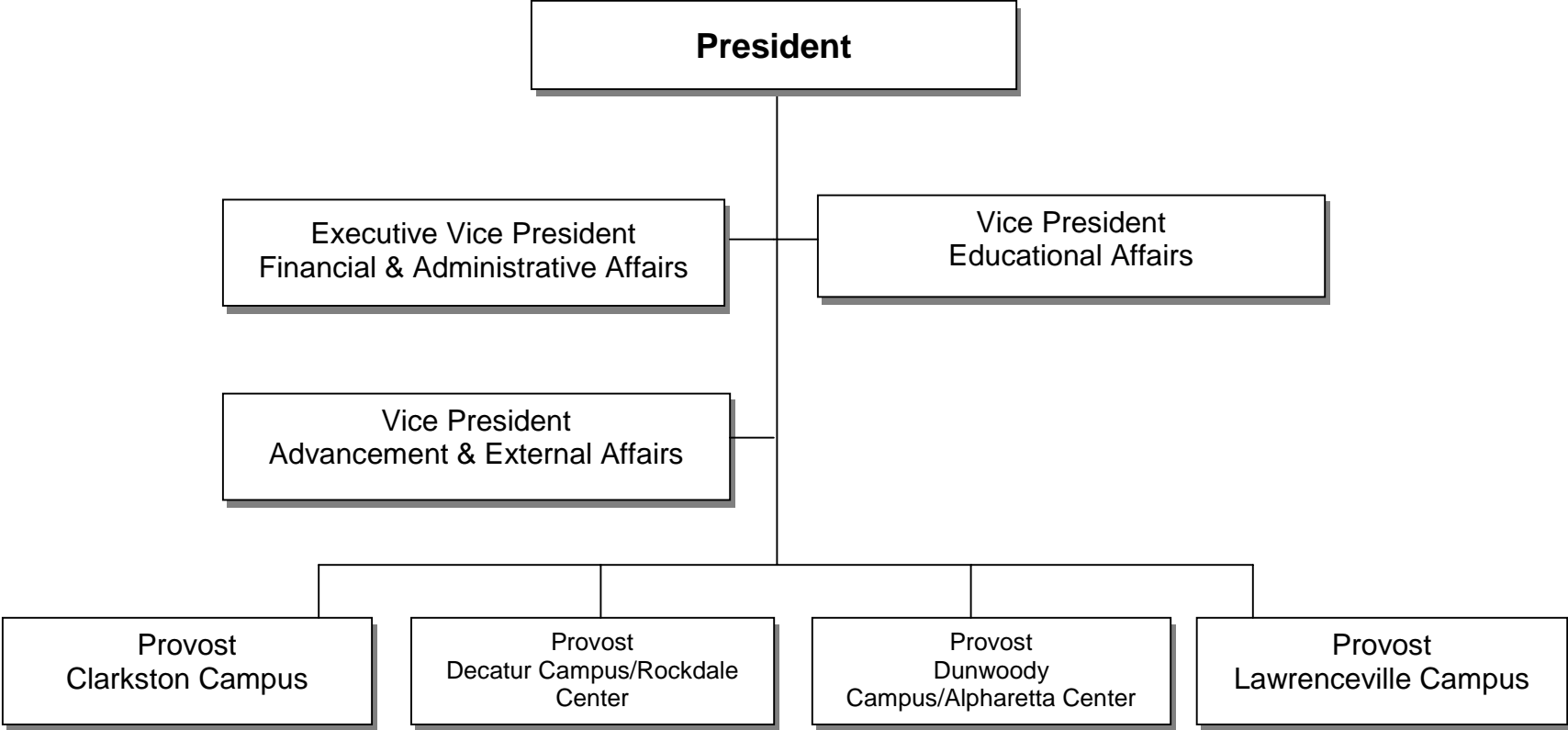
Felita Williams, Ph.D., Interim
Provost, Decatur Campus/
Rockdale Center

Charlotte Warren, Ph.D. Provost
Lawrenceville Campus

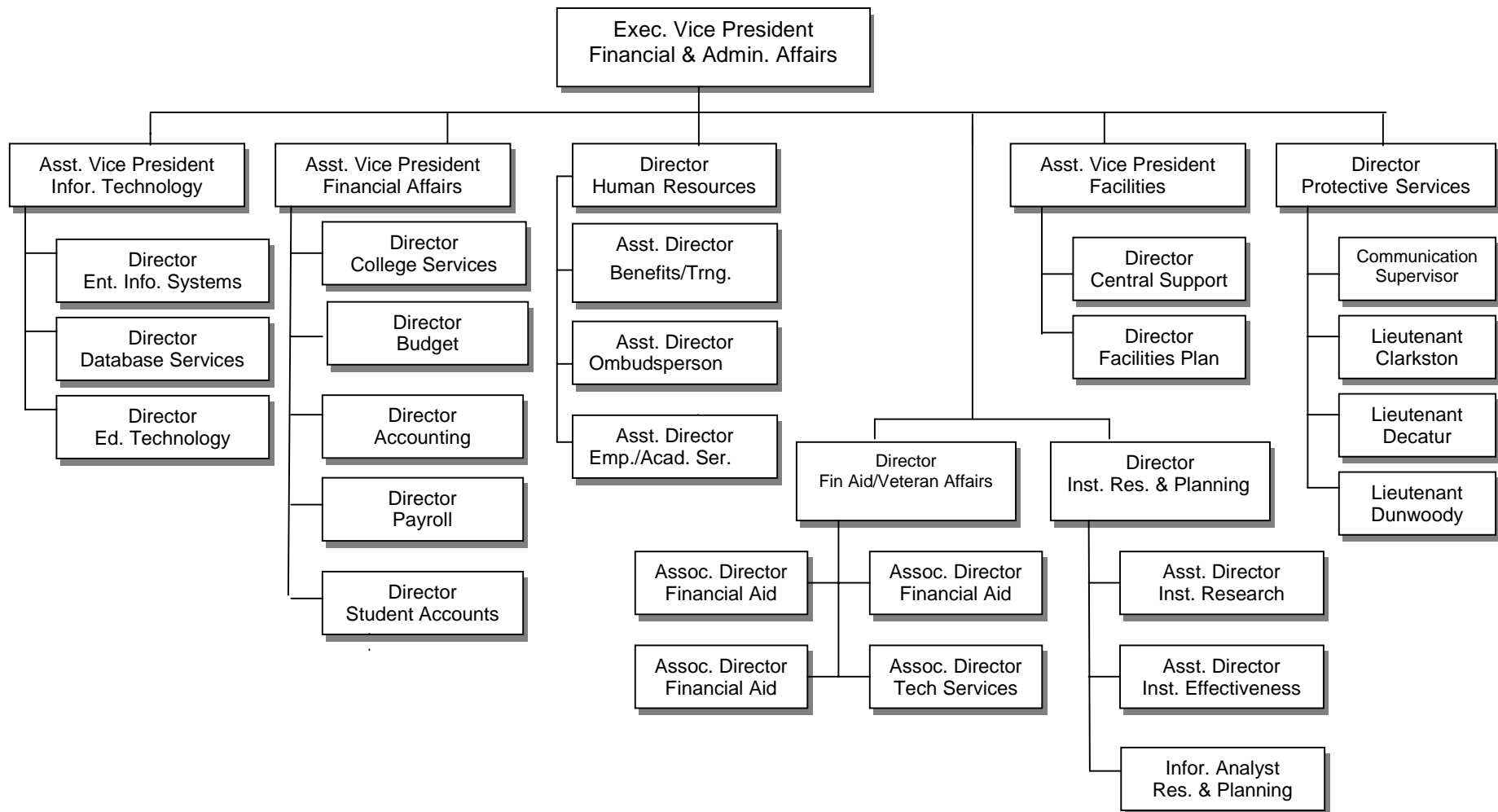
Administrative Organizational Chart



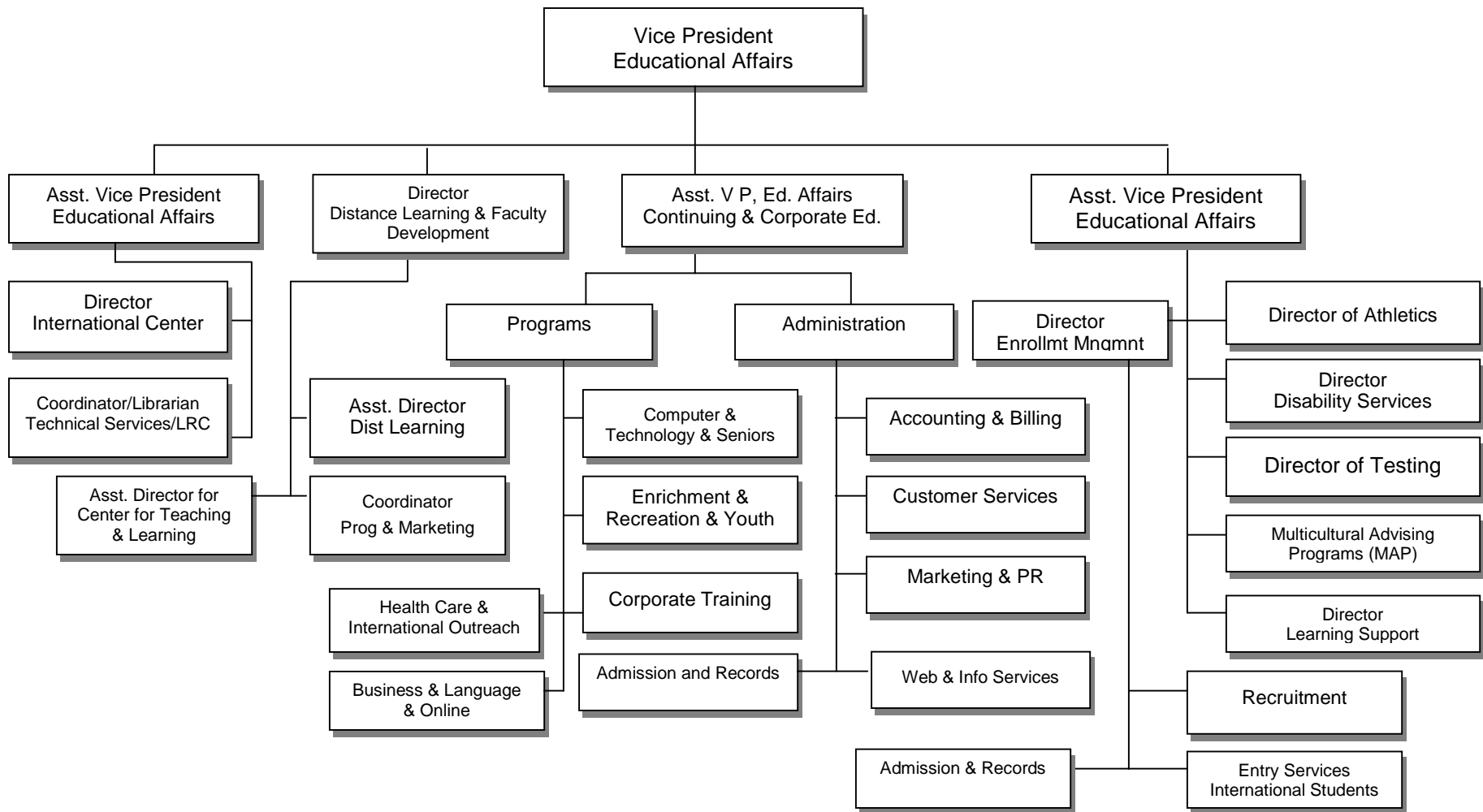
College Executive Team



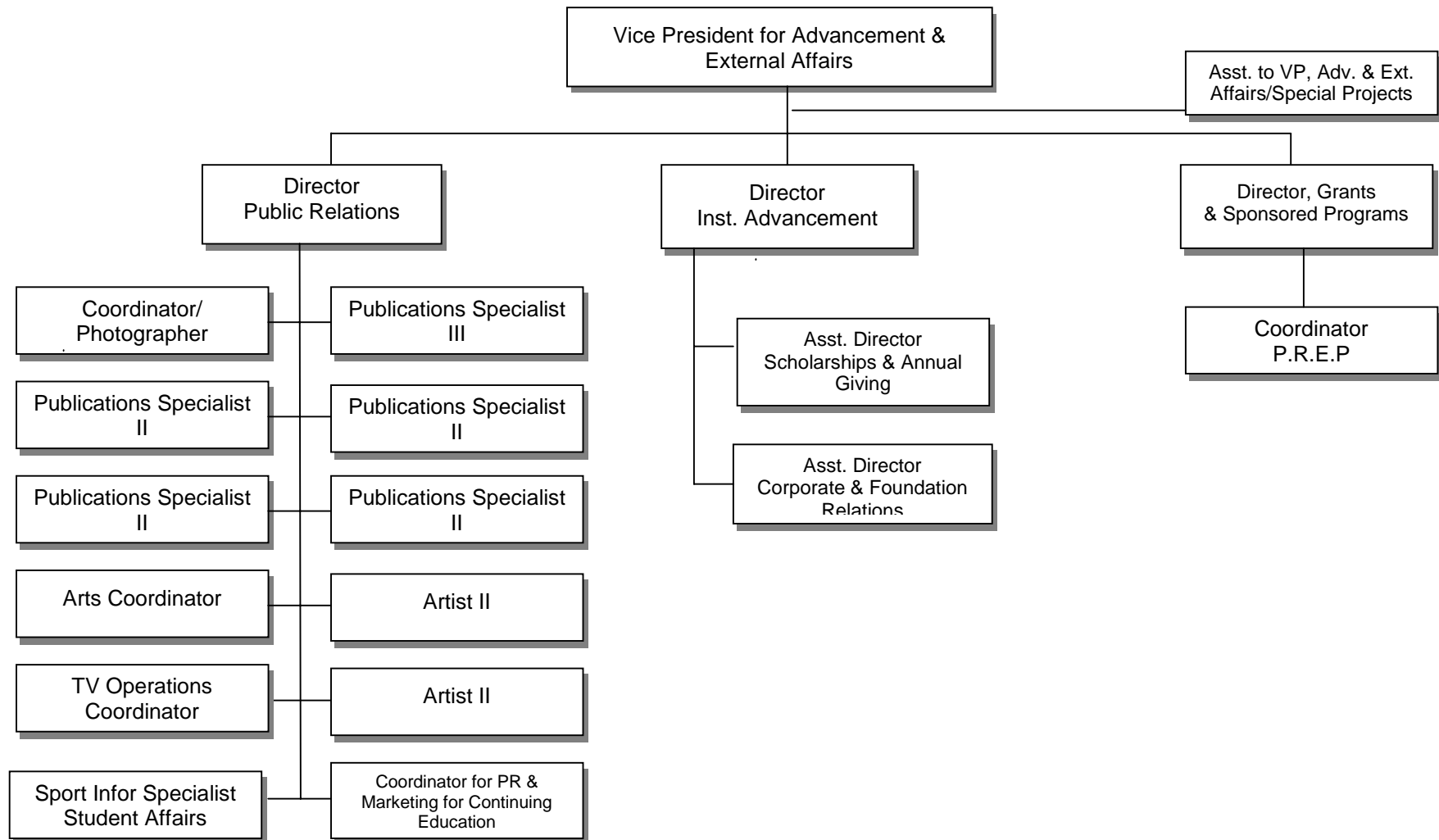
Financial and Administrative Affairs Team



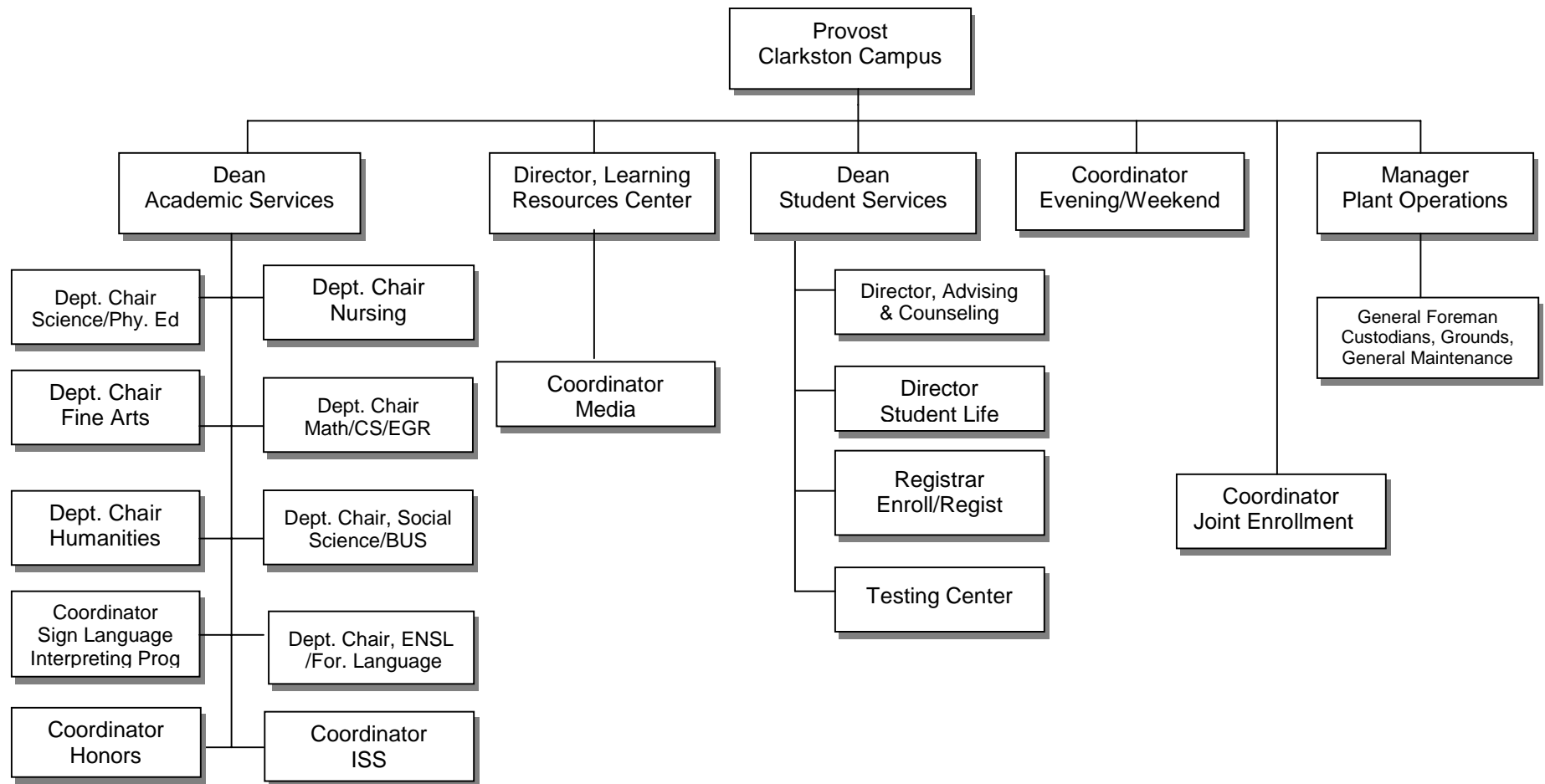
Educational Affairs Team



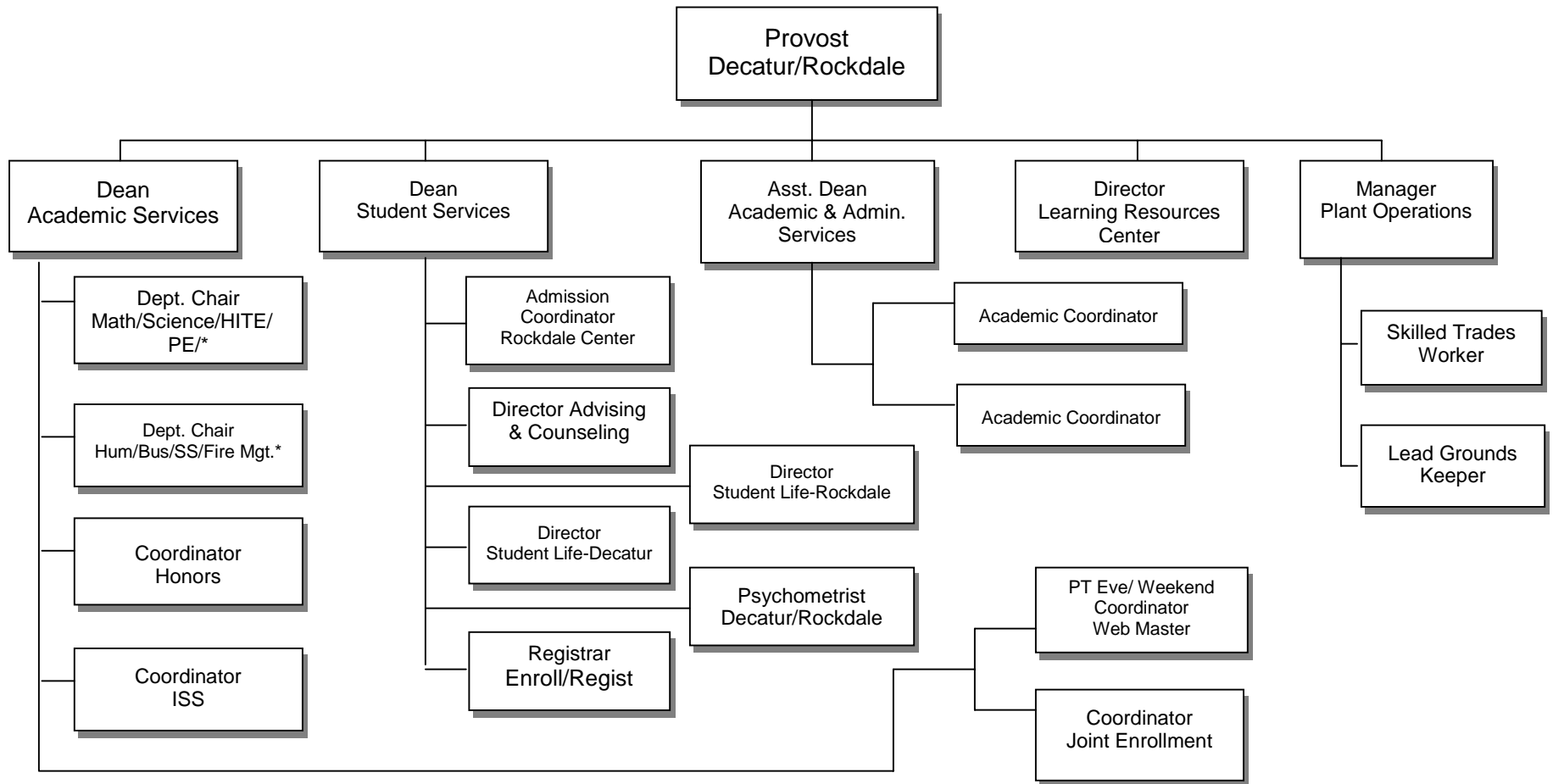
Advancement and External Affairs Team



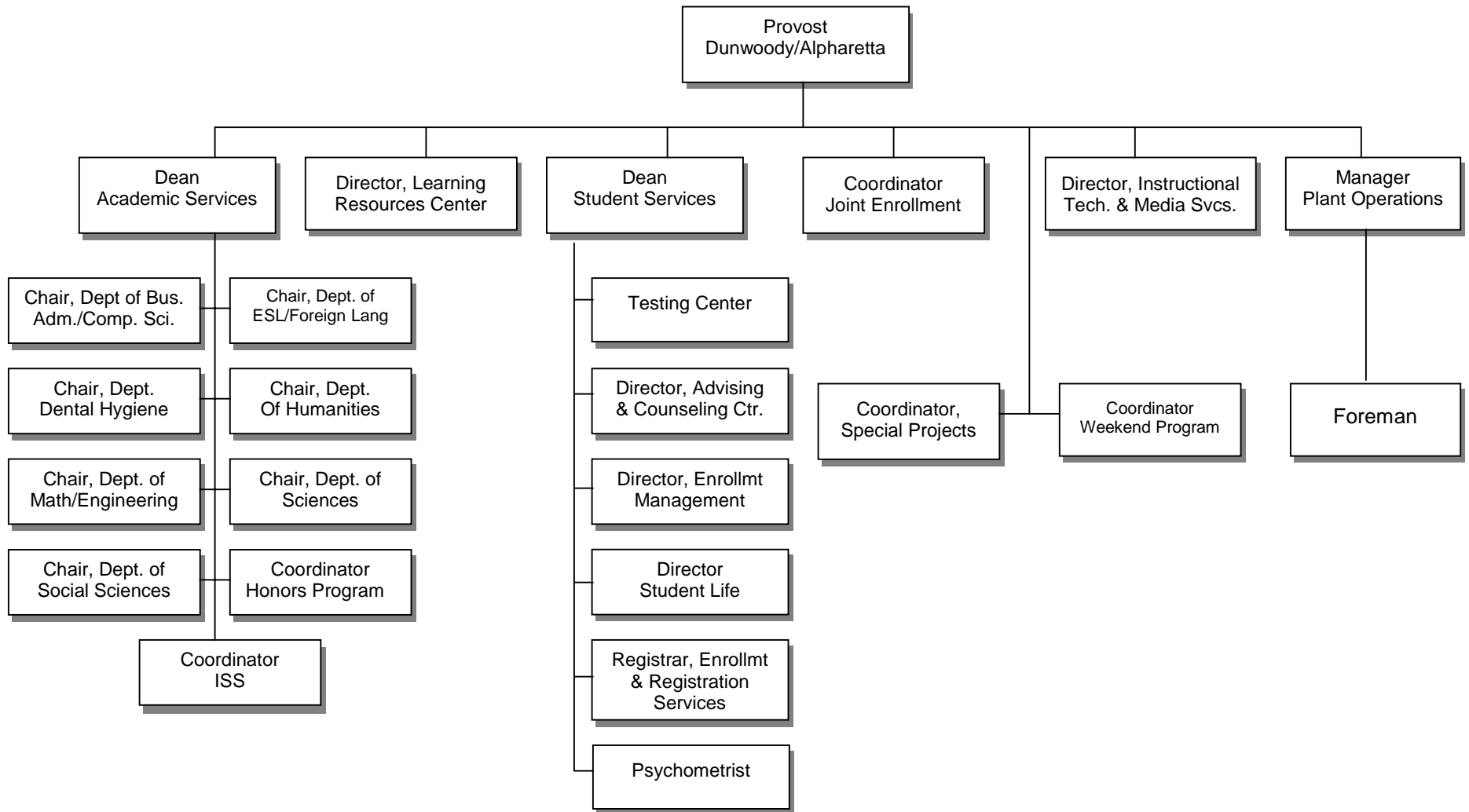
Clarkston Campus Team



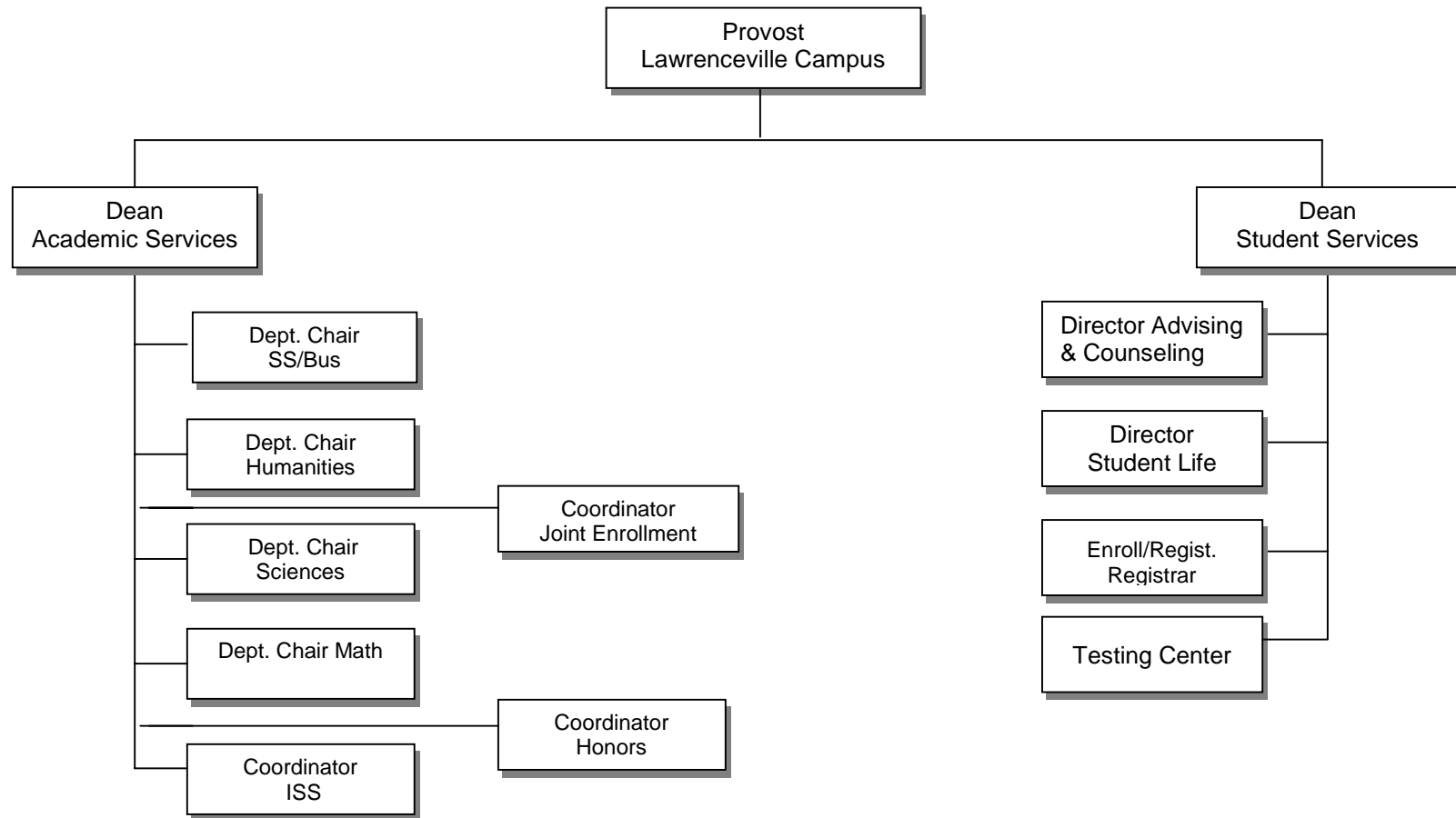
Decatur Campus/Rockdale Center Team



Dunwoody Campus/Alpharetta Center Team



Lawrenceville Campus Team



Geographic Locations of the GPC Campuses

Alpharetta Center
3705 Brookside Pkwy
Alpharetta, GA 30022

Clarkston Campus
555 North Indian Creek Dr.
Clarkston, GA 30021-2361

Decatur Campus
3251 Panthersville Rd.
Decatur, GA 30034-3897

Dunwoody Campus
2101 Womack Rd.
Dunwoody, GA 30338-4497

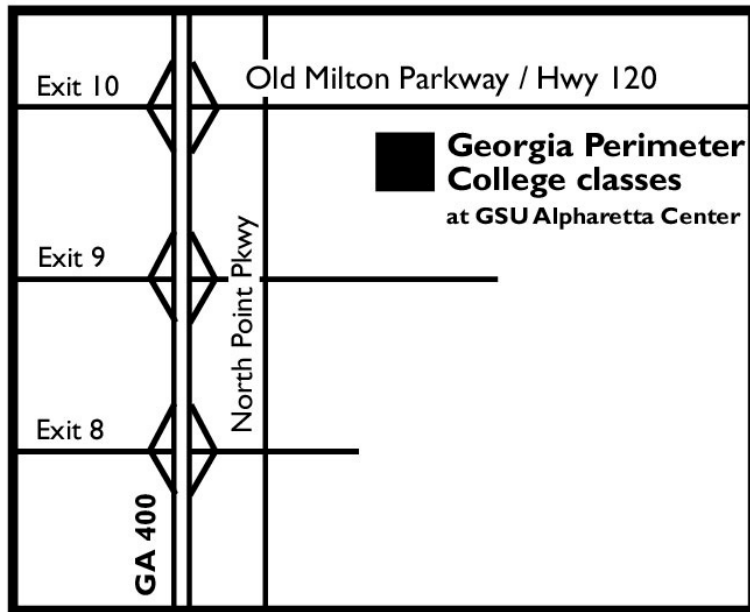
Lawrenceville Campus/Gwinnett University System
Center
1000 University Center Lane
Lawrenceville, GA 30043

Rockdale Center for Higher Education
1115 West Ave.
Conyers, GA 30012-9948



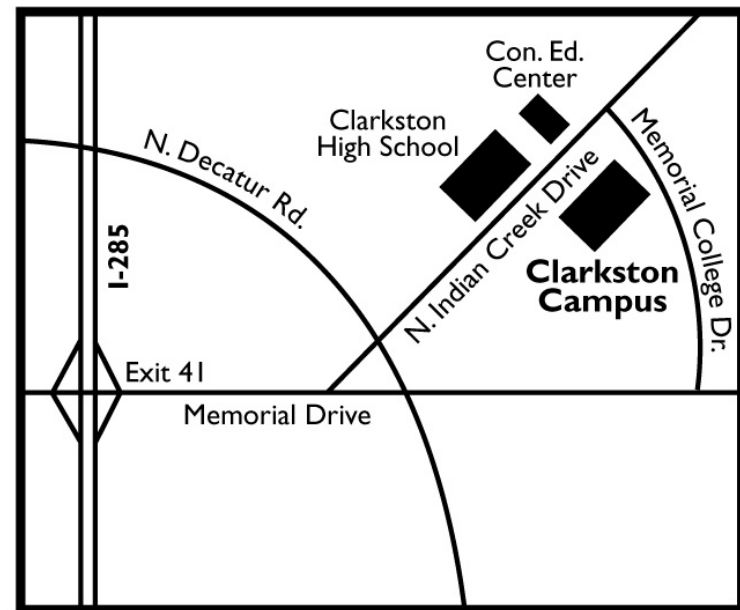
Maps of Alpharetta Center and Clarkston Campus

Alpharetta Center



Alpharetta Center
3705 Brookside Pkwy
Alpharetta, GA 30022

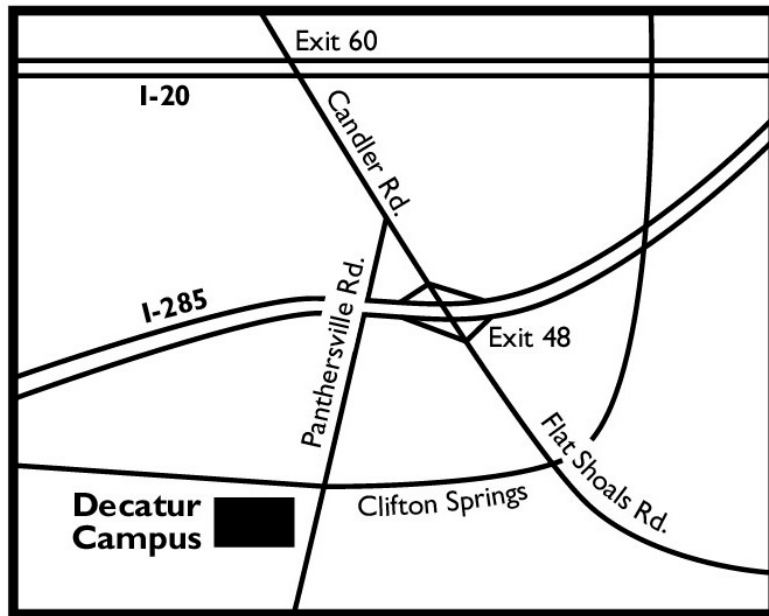
Clarkston Campus



Clarkston Campus
555 North Indian Creek Dr.
Clarkston, Georgia 30021-2361

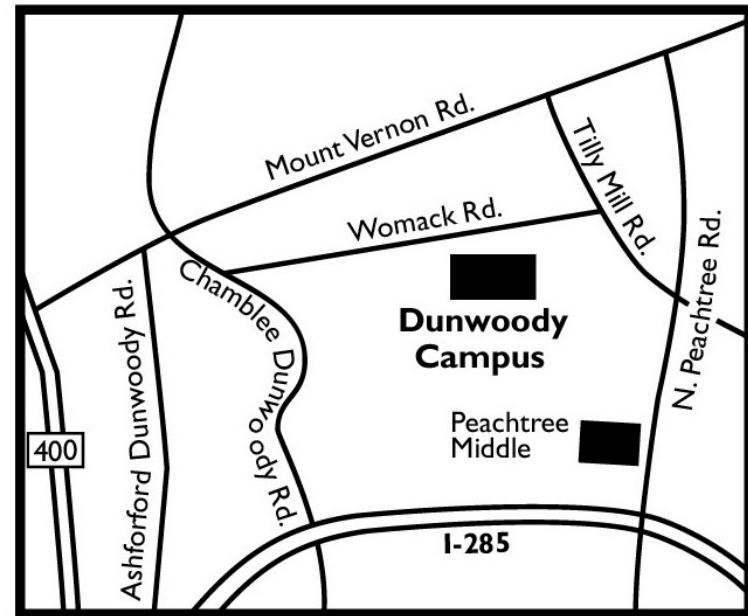
Maps of Decatur and Dunwoody Campuses

Decatur Campus



Decatur Campus
3251 Panthersville Road
Decatur, Georgia 30034-3897

Dunwoody Campus



Dunwoody Campus
2101 Womack Road
Dunwoody, Georgia 30338-4497

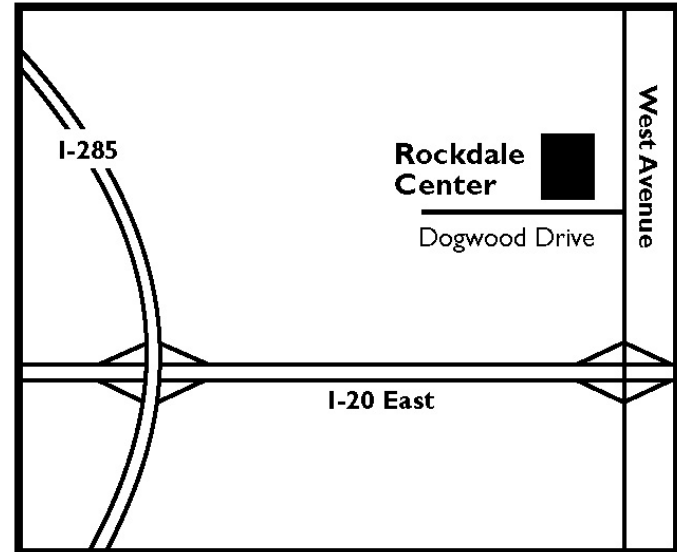
Maps of Lawrenceville Campus and Rockdale Center

Lawrenceville Campus



Lawrenceville Campus
1000 University Center Lane
Lawrenceville, Georgia 30043

Rockdale Center



**Rockdale Center for
Higher Education**
1115 West Avenue
Conyers, Georgia 30012

GPC Off-Campus Sites for Fall 2002

Site Name	City
AMF Chamblee Lanes	Chamblee
AMF Stone Mountain Lanes	Stone Mountain
Collins Hill High School	Lawrenceville
Decatur High School	Decatur
Douglas County High School	Douglas
Duluth High School	Duluth
Dunwoody High School	Dunwoody
Heritage High School	Conyers
Jim Hearn Golf Center	Chamblee
Meneely Show Horses	Conyers
Milton High School	Alpharetta
North Spring High School	Atlanta
Riverwood High School	Atlanta
Rockdale County Parks & Recreation Center	Conyers
Saint Joseph's Hospital of Atlanta	Atlanta
Salem High School	Conyers
Scientific Atlanta	Lawrenceville
Temima High School	Atlanta
USG North Metro Center (Alpharetta Center)	Alpharetta

Academics

Academic Programs Offered, FY 2003

Anthropology (AA)
Arts (AA)
Arts (AS)
Biology (AA) (M)
Business Administration (AS)
Business Management (AAS) 2
Business and Office Technology (AAS) 1
Chemistry (AA) (M)
Computer Information Systems (AAS) 1
Computer Programming Specialist (AAS) 2
Computer Science (AS) (M)
Dental Hygiene (Career) (AS)
Dental Assisting (AAS) 2
Early Childhood Care and Education (AAS) 1
Electronics Technology (AAS) 1
Engineering (AS) (M)
English (AA)
Fire Management (Career) (AAS) (C)
Foreign Language (AA)
General Studies (AS)
Geology (AA) (M)
Health and Physical Education (AS) 3
History (AA)
Industrial Maintenance Technology (AAS) 1
Internet Web Design (AAS) 2
Interpreter Training (Career) (AAS) (C)
Journalism (AA)
Marketing Management (AAS) 1,2
Mathematics (AA) (M)

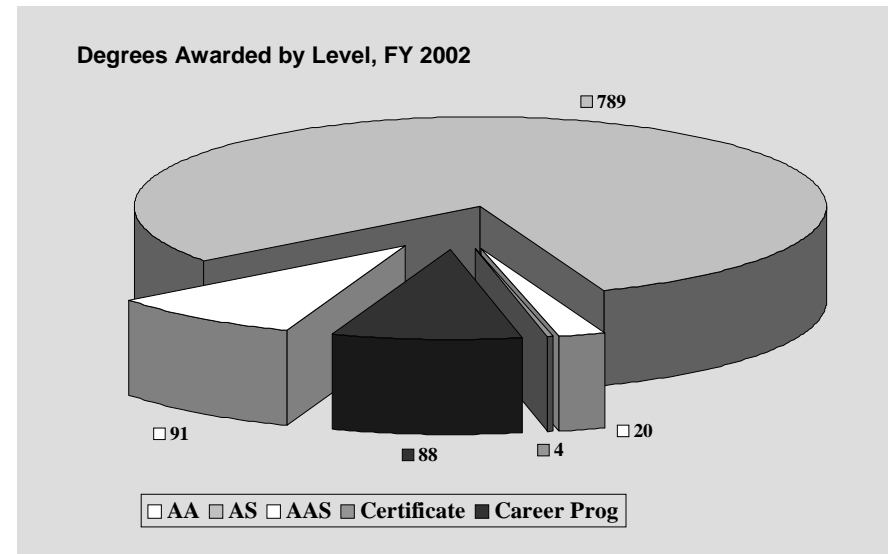
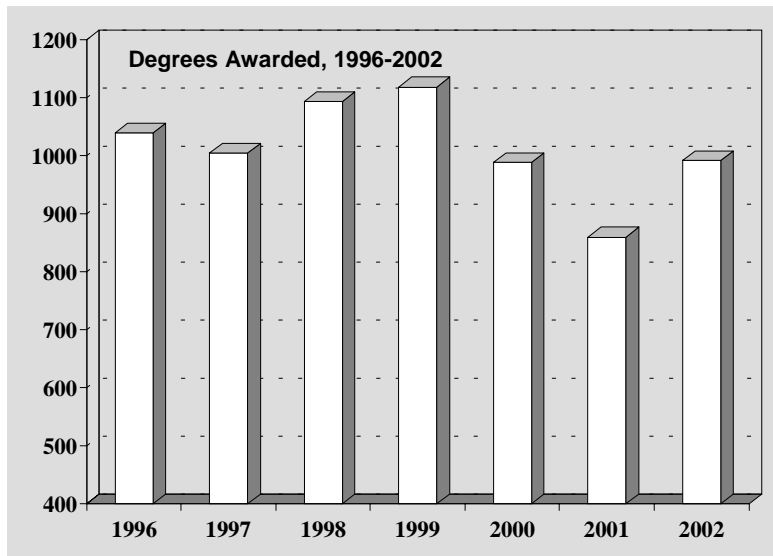
Medical Assisting (AAS) 1,2
Medical Laboratory Technology (AAS) 1
Microcomputer Specialist (AAS) 2
Music (AS)
Networking Specialist (AAS) 2
Nursing (Career) (AS)
Paramedic Technology (AAS) 2
Philosophy (AA)
Physical Therapist Assistant (AAS) 2
Physics (AA) (M)
Political Science (AA)
Pre-Dentistry/Pre-Medicine/Pre-Pharmacy (AS) (M)
Psychology (AA)
Psychology (AS)
Radiologic Technology (AAS) 2
Respiratory Therapy (AAS) 2
Sociology (AA)
Surgical Technology (AAS) 1,2
Teacher Education (AS)
Theatre (AA)

Note: AA= Associate of Arts Degree
AS= Associate of Science Degree
AAS= Associate of Applied Science Degree
M= math-based major
C= Certificate
1=Dual Degree program with DeKalb Technical College
2=Dual Degree program with Gwinnett Technical College
3=Teacher Option Available

Degrees Awarded Summary, FY 1996-2002

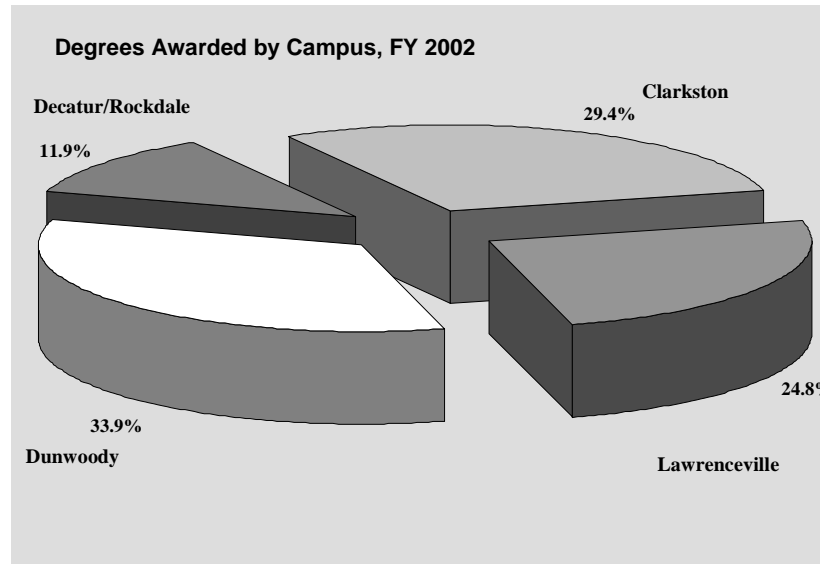
Degrees Awarded by Level and Fiscal Year, GPC, FY 1996-2002

Degree Level	1996	1997	1998	1999	2000	2001	2002
Associate of Arts (Core Curriculum)	73	89	88	117	99	80	91
Associate of Science	679	699	787	818	727	635	789
Associate of Applied Science	104	52	34	31	25	19	20
Certificate	3	4	7	12	12	9	4
Career Program (Dental Hygiene, Nursing)	181	161	178	141	126	117	88
Total	1,040	1,005	1,094	1,119	989	860	992



Degrees Awarded by Campus, FY 2002

Degrees Awarded by Campus, 2002		
Campus	Degrees Awarded	
	#	%
Clarkston	292	29.4
Lawrenceville	246	24.8
Dunwoody	336	33.9
Decatur/Rockdale	118	11.9
Total	992	100.0

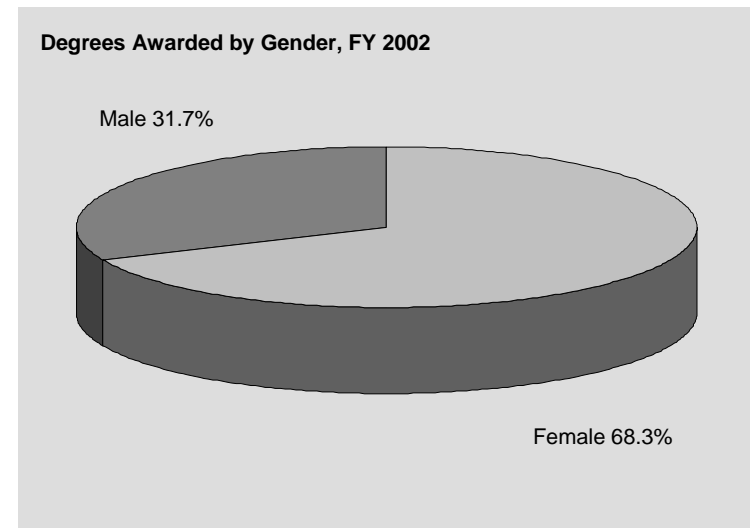
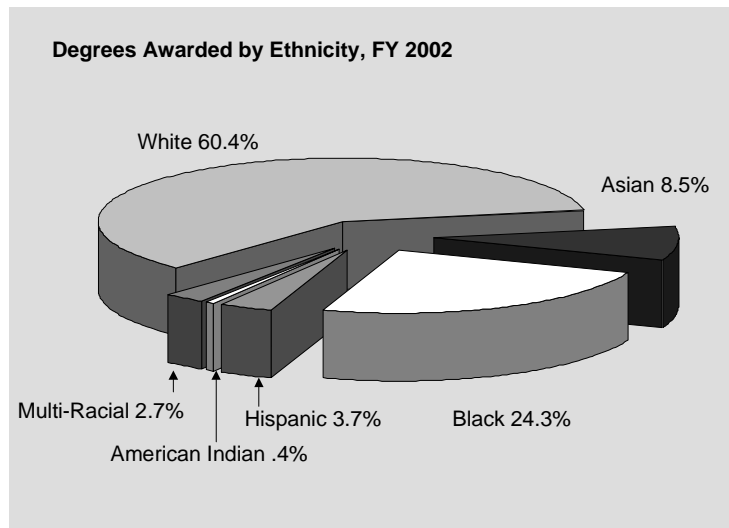


Degrees Awarded by Ethnicity and Gender, FY 2002

Degrees Awarded by Ethnicity and Gender, Georgia Perimeter College, FY 2002

	Female		Male		Total	
	#	%	#	%	#	%
Asian	55	65.5	29	34.5	84	8.5
Black	185	76.8	56	23.2	241	24.3
Hispanic	26	70.3	11	29.7	37	3.7
Multiracial	16	59.3	11	40.7	27	2.7
Native American	2	50.0	2	50.0	4	.4
White	394	65.8	205	34.2	599	60.4
Grand Total Awarded	678	68.3	314	31.7	992	100.0

Note: In each cell, there are two numbers, a number of degrees awarded and its percentage of its group. In the last column, "Total" is the number of degrees awarded of that group, and percentage is its share of the grand total degrees awarded presented in the last row.



Degrees Awarded by Major, FY 2002

Degree	Major	#
--------	-------	---

Associate of Arts

AACC	Art	2
AACC	Biology	5
AACC	Chemistry	7
AACC	Drama-Speech	1
AACC	English	6
AACC	Foreign Language	16
AACC	History	6
AACC	Journalism	14
AACC	Mathematics	7
AACC	Philosophy	1
AACC	Physics	1
AACC	Political Science	8
AACC	Psychology	13
AACC	Radio & TV Brdcast	1
AACC	Sociology	3

Total		91
--------------	--	-----------

Certificate	Major	#
-------------	-------	---

CER 1	Interpreter Trng.	4
Total		4

Degree	Major	#
--------	-------	---

Associate of Science

ASCC	Agriculture Enginrng	1
ASCC	Art	13
ASCC	Business Adm	381
ASCC	Business Education	4
ASCC	Computer Science	41
ASCC	Drama Speech	1
ASCC	Engineering	3
ASCC	General Studies	137
ASCC	Health & Physical Ed	2
ASCC	Journalism	1
ASCC	Pre-medicine	4
ASCC	Pre-pharmacy	7
ASCC	Psychology	57
ASCC	Teacher Education	131
ASCC	Urban Life	6

Total		789
--------------	--	------------

Career Program

ASDH	Dental Hygiene	24
ASN	Nursing	64

Total		88
--------------	--	-----------

Degree	Major	#
--------	-------	---

Associate of Applied Science

AASBA	Electronics Technology	2
AASFMT	Fire Management Technology	2
AASFST	Fire Science Technology	1
AASBA	Business & Office Technology	3
AASIT	Interpreter Training	6
AASBA	Marketing Management	2
AASHC	Medical Laboratory Technology	1
AASBA	Microcomputer Specialist	1
AASHC	Surgical Technology	2

Total		20
--------------	--	-----------

Students Taught by Program by Campus, Fall 2002

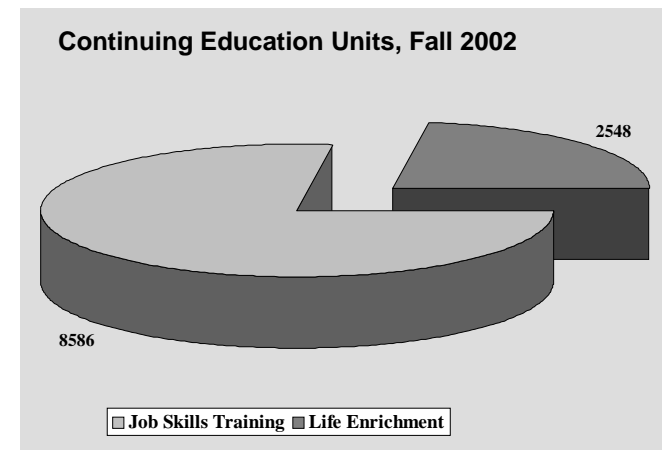
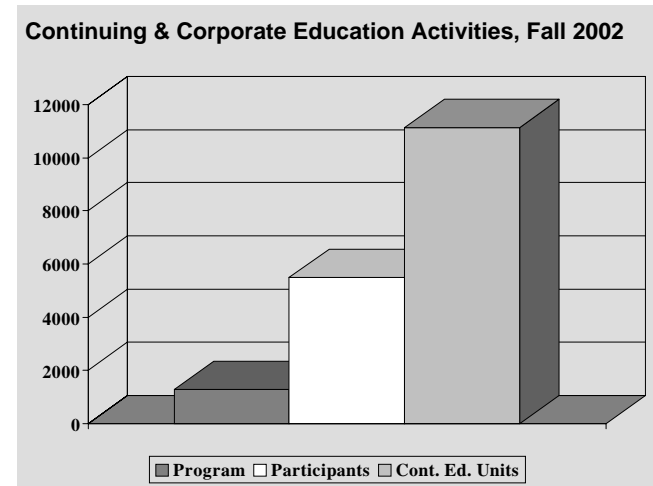
Instructional Program Area	Alpharetta	Clarkston	Decatur	Dunwoody	Lawrenceville	Rockdale	Total Students Enrolled
Business	115	1,103	447	2,057	1,580	406	5,744
Dent. Hygiene	NA	NA	NA	188	NA	NA	188
ENSL& Foreign Languages	36	1,034	60	1,191	820	131	3,272
Fine Arts*	0	650	37	390	507	15	1,599
Humanities	273	3,612	1,598	4,020	4,325	1,082	14,938
Interpreter Training	NA	141	NA	10	31	NA	182
MATH/CSC/ENGR	129	3,241	776	3,293	3,042	616	11,097
Nursing	NA	275	NA	NA	99	NA	374
Physical Education	38	699	182	769	785	198	2,671
Science	41	2,421	850	2,325	2,711	266	8,614
Social Science	234	2,537	694	3,566	3,437	714	11,182
Others: HEDS (College Success)	NA	147	126	78	145	17	513
Others: MILI (Introduction to Army)	NA	4	NA	NA	NA	NA	4
TOTAL**	866	15,864	4,770	17,887	17,482	3,445	60,314

Note: * Performing Arts students are not included.

**The totals are total students enrolled in all programs for each campus/center and GPC.

Continuing and Corporate Education, Fall 1998-2002

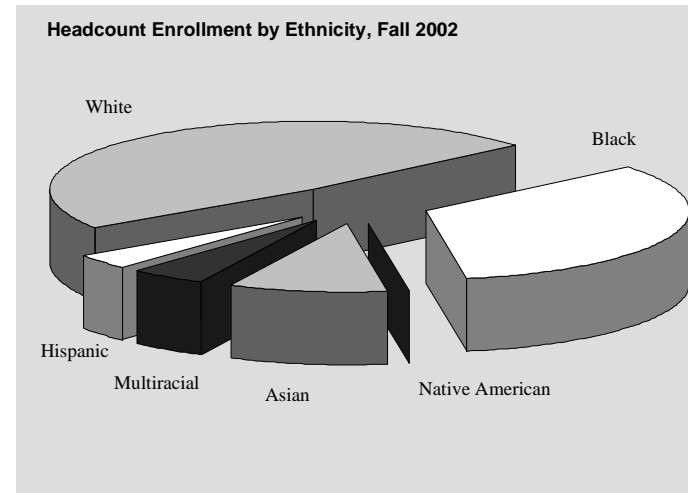
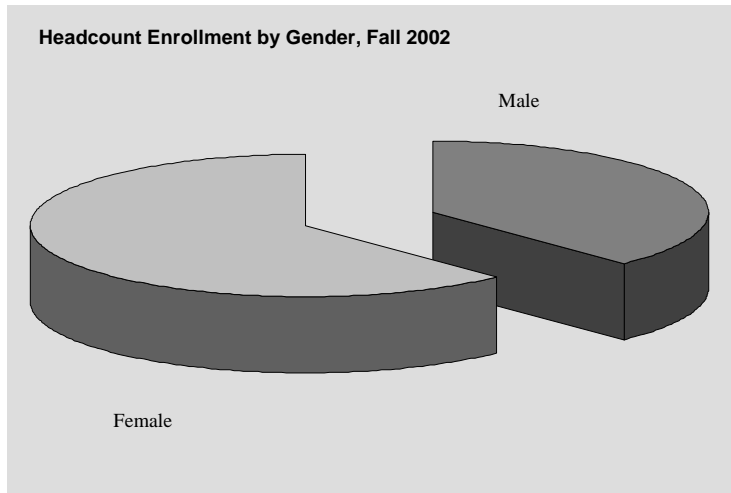
Category	1998	1999	2000	2001	2002
PROGRAMS					
Job Skills Trng.	1,181	906	932	984	1,055
Life Enrichment	219	112	205	176	232
Total	1,400	1,018	1,137	1,160	1,287
Participants					
Job Skills Trng.	5,483	5,065	4,248	4,106	4,502
Life Enrichment	1,349	902	1,042	892	1,009
Total	6,832	5,967	5,290	4,998	5,511
Continuing Education Units (CEU)					
Job Skills Trng.	10,216	8,959	7,451	7,969	8,586
Life Enrichment	1,804	906	1,029	2,301	2,548
Total	12,020	9,865	8,480	10,271	11,134
EFT	200	164	141	171	186



Students

Enrollment Summary I - GPC All Campuses, Fall 1996-2002

On-Campus Student Enrollment								
	1996	1997	1998	1999	2000	2001	2002	
Total Headcount	15,690	15,468	14,085	14,091	13,708	15,372	17,573	
Full-Time	38%	40%	35%	39%	40%	42%	46%	
Part-Time	62%	60%	65%	61%	60%	58%	54%	
Equivalent Full-Time	10,653	10,680	8,219	8,253	8,439	9,699	11,551	
On-Campus Student Demographics								
Headcount by Gender:	Male	6,118	6,083	5,533	5,606	5,364	5,948	6,617
	Female	9,572	9,385	8,552	8,485	8,344	9,424	10,956
Headcount by Ethnicity:	Asian	1,056	1,041	1,049	1,190	1,296	1,461	1,677
	Black	4,848	4,823	4,372	4,376	4,142	4,978	5,886
	Hispanic	412	424	389	480	480	548	648
	Multiracial	172	272	302	367	438	575	848
	Native American	40	41	30	40	39	45	42
	White	9,162	8,867	7,943	7,638	7,313	7,765	8,472
Others:	Senior Citizens	18	14	16	20	18	31	33
	Non-U.S.	1,943	1,924	1,881	2,079	2,102	2,443	2,895
	Average Age	25.4	25.4	25.0	24.3	24.1	24.7	24.9
	Median Age	23	23	22	22	21	22	22

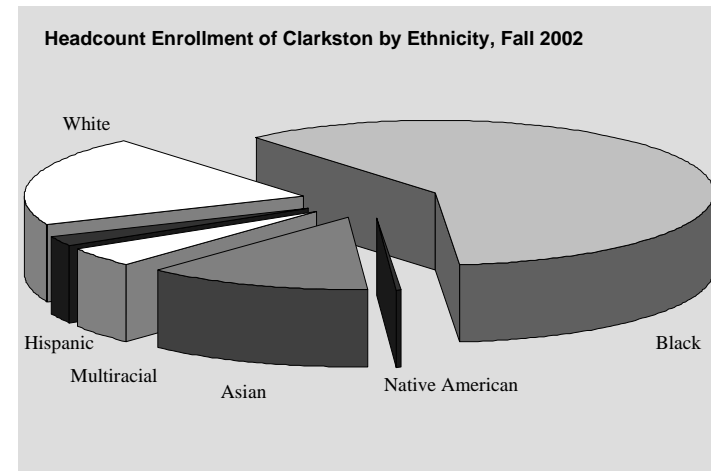
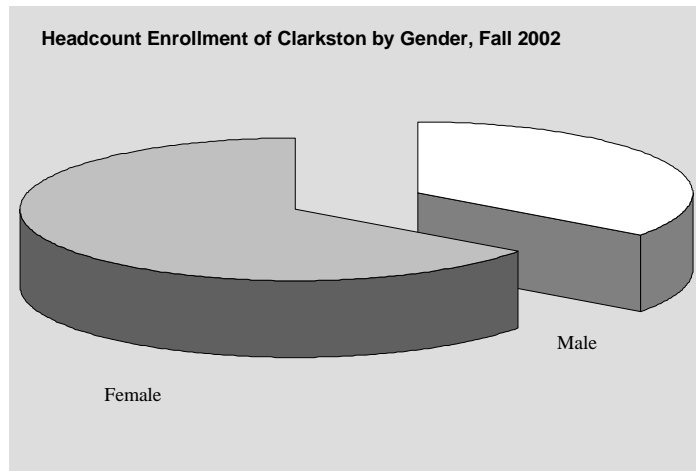


Enrollment Summary II - GPC All Campuses, Fall 1996-2002

On-Campus Enrollment by Schedule							
	1996	1997	1998	1999	2000	2001	2002
Day	10,991	10,769	10,325	11,488	11,330	12,526	14,184
Evening	6,639	6,656	6,345	6,699	6,577	7,746	9,101
Weekend	658	762	951	2,187	1,983	2,536	2,939
On-Campus Enrollment by Classification							
Learning Support/Developmental Studies	4,113	3,928	3,270	3,476	3,298	3,821	4,413
Joint Enrollment	580	803	876	905	915	759	660
Freshman	5,540	5,099	4,837	4,939	5,012	5,776	6,727
Sophomore	5,118	5,212	4,715	4,342	4,078	4,474	5,183
Transient	263	283	202	241	229	301	268
Unclassified	1	143	185	188	176	241	322
On-Campus New Student Enrollment by Classification							
Learning Support/Developmental Studies	1,849	1,813	1,633	1,793	1,731	2,295	2,319
Joint Enrollment	540	782	861	884	874	735	634
Freshman	982	653	720	822	880	802	1,102
Transfer	826	743	702	775	778	907	1,163
Transient	130	113	84	111	89	136	112
Unclassified	0	118	73	105	73	108	159
Total	4,327	4,222	4,073	4,490	4,425	4,983	5,489
On-Campus Students Needing Learning Support							
Math	3,413	3,263	2,815	2,723	2,680	3,162	3,751
English	1,205	1,156	970	1,101	1,055	1,173	1,258
Reading	919	815	781	894	881	825	951
Unduplicated Head Count	4,113	3,928	3,270	3,476	3,298	3,821	4,413
On-Campus Student Enrollment by Residence							
Georgia	14,697	14,531	13,304	13,261	12,706	14,258	16,408
Out-of-State	903	845	667	731	894	980	1,009
Non-Resident Tuition Waived	90	92	114	99	108	134	156

Enrollment of GPC Clarkston, Fall 1996-2002

		On-Campus Student Enrollment						
		1996	1997	1998	1999	2000	2001	2002
Total Headcount		6,025	5,615	5,045	4,933	4,498	4,709	5,207
	Full-Time	41%	41%	36%	39%	42%	43%	45%
	Part-Time	59%	59%	64%	61%	58%	57%	55%
Equivalent Full-Time		3,898	3,680	2,781	2,588	2,937	3,106	3,518
		On-Campus Student Demographics						
Headcount by Gender:	Male	2,248	2,077	1,778	1,786	1,618	1,662	1,827
	Female	3,777	3,538	3,267	3,147	2,880	3,047	3,380
Headcount by Ethnicity:	Asian	747	673	621	660	673	649	679
	Black	2,915	2,829	2,677	2,599	2,354	2,648	3,113
	Hispanic	147	139	124	133	133	118	106
	Multiracial	67	110	135	151	154	191	241
	Native American	14	15	9	14	12	11	9
	White	2,135	1,849	1,479	1,376	1,172	1,092	1,059
Others:	Senior Citizens	10	6	8	10	7	12	9
	Non-U.S.	1,330	1,209	1,178	1,199	1,170	1,158	1,273
	Average Age	26.4	27.0	26.2	25.9	25.5	25.8	25.8
	Median Age	24	24	24	23	23	23	23

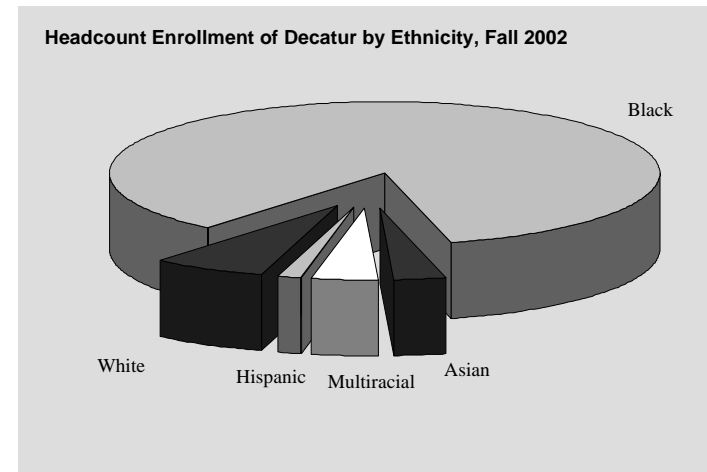
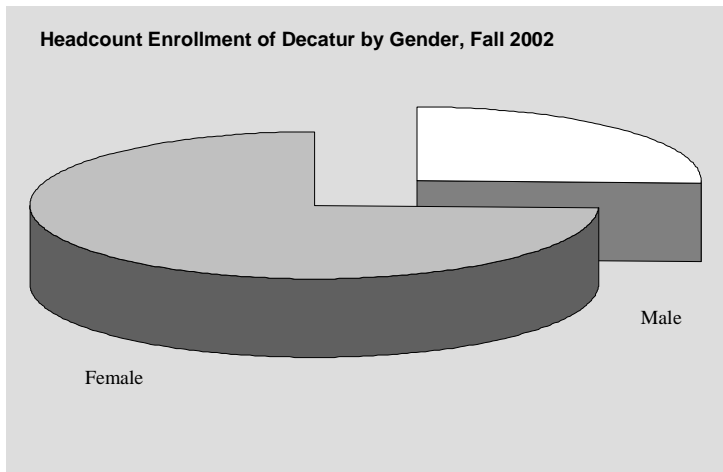


Enrollment of GPC Clarkston, Fall 1996-2002 (Continued)

On-Campus Enrollment by Schedule							
	1996	1997	1998	1999	2000	2001	2002
Day	4,636	4,253	3,954	4,024	3,891	4,047	4,439
Evening	2,235	2,161	2,124	2,092	2,139	2,283	2,644
Weekend	392	359	474	844	805	916	945
On-Campus Enrollment by Classification							
Learning Support/Developmental Studies	1,573	1,376	1,188	1,244	1,127	1,204	1,387
Joint Enrollment	51	47	54	53	30	37	37
Freshman	2,044	1,711	1,539	1,557	1,540	1,625	1,851
Sophomore	2,259	2,302	2,105	1,945	1,677	1,686	1,786
Transient	92	114	76	72	61	86	66
Unclassified	0	65	83	62	63	71	80
On-Campus New Student Enrollment by Classification							
Learning Support/Developmental Studies	633	583	534	600	563	632	667
Joint Enrollment	48	42	52	48	28	33	33
Freshman	316	167	192	211	235	217	270
Transfer	293	230	247	267	234	252	293
Transient	49	45	32	32	29	36	27
Unclassified	0	55	29	29	24	34	34
Total	1,339	1,122	1,086	1,187	1,113	1,204	1,324
On-Campus Students Needing Learning Support							
Math	1,297	1,142	1,032	1,059	947	1,037	1,199
English	459	400	361	362	331	349	399
Reading	361	304	305	292	266	257	292
Unduplicated Head Count	1,573	1,376	1,188	1,244	1,127	1,204	1,387
On-Campus Student Enrollment by Residence							
Georgia	5,474	5,140	4,645	4,531	4,026	4,329	4,807
Out-of-State	504	417	336	343	417	329	333
Non-Resident Tuition Waived	47	58	64	59	55	51	67

Enrollment of GPC Decatur, Fall 1996-2002

		On-Campus Student Enrollment						
		1996	1997	1998	1999	2000	2001	2002
Total Headcount		1,380	1,274	1,148	1,274	1,137	1,375	1,662
	Full-Time	34%	38%	30%	32%	33%	34%	37%
	Part-Time	66%	62%	70%	68%	67%	66%	63%
Equivalent Full-Time		797	750	538	547	668	822	1,037
		On-Campus Student Demographics						
Headcount by Gender:	Male	381	376	335	364	323	380	426
	Female	999	898	813	910	814	995	1,236
Headcount by Ethnicity:	Asian	18	27	27	20	16	32	51
	Black	1,216	1,115	1,007	1,085	981	1,181	1,411
	Hispanic	8	13	6	17	13	11	20
	Multiracial	7	19	17	25	25	37	67
	Native American	6	0	2	3	1	0	0
	White	125	100	89	124	101	114	113
Others:	Senior Citizens	0	0	2	2	2	0	2
	Non-U.S.	89	83	78	76	55	74	124
	Average Age	26.7	27.1	26.5	26.0	25.5	25.3	25.5
	Median Age	24	24	23	23	22	22	22



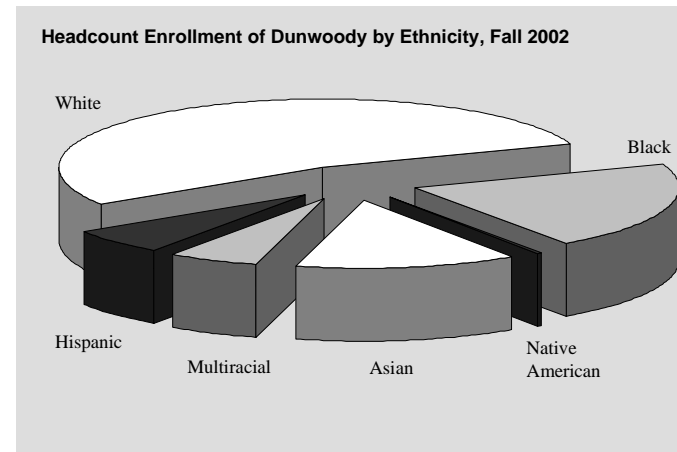
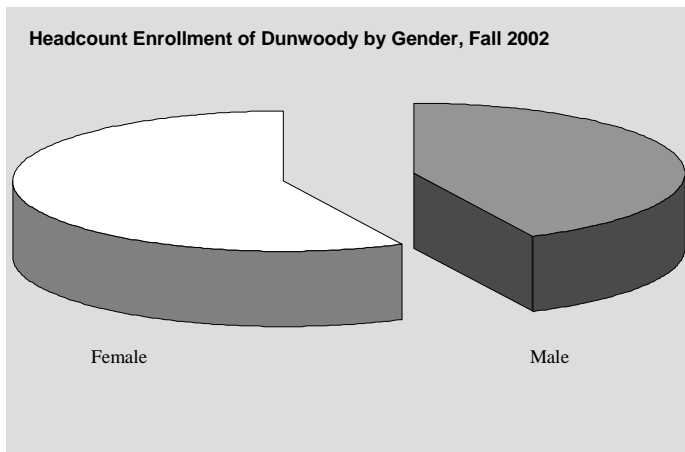
Enrollment of GPC Decatur, Fall 1996-2002 (Continued)

On-Campus Enrollment by Schedule							
	1996	1997	1998	1999	2000	2001	2002
Day	913	839	891	955	943	1,178	1,408
Evening	581	514	398	551	543	650	813
Weekend	0	5	47	108	184	328	215
On-Campus Enrollment by Classification							
Learning Support/Developmental Studies	472	441	382	517	440	501	625
Joint Enrollment	4	11	7	4	8	9	2
Freshman	426	352	342	352	344	441	535
Sophomore	459	448	393	372	320	386	460
Transient	18	15	13	13	18	20	13
Unclassified	0	7	11	16	7	18	27
On-Campus New Student Enrollment by Classification							
Learning Support/Developmental Studies	173	169	179	246	211	262	313
Joint Enrollment	4	8	7	4	8	9	2
Freshman	46	16	14	36	30	34	106
Transfer	57	40	42	58	50	70	40
Transient	5	4	6	8	9	8	5
Unclassified	0	5	2	12	3	9	14
Total	285	242	250	364	311	392	480
On-Campus Students Needing Learning Support							
Math	336	363	316	410	342	386	490
English	197	144	133	188	165	177	244
Reading	175	112	121	175	160	163	210
Unduplicated Head Count	472	441	382	517	440	501	625
On-Campus Student Enrollment by Residence							
Georgia	1,342	1,233	1,179	1,235	1,101	1,323	1,587
Out-of-State	36	39	25	31	31	41	60
Non-Resident Tuition Waived	2	2	4	8	5	11	15

Enrollment of GPC Dunwoody, Fall 1996-2002

On-Campus Student Enrollment											
	1996	1997	1998	1999	2000	2001	2001	2002	2002		
Total Headcount	5,038	5,142	4,620	4,797	4,671	145	5,099	275	5,552	376	
Full-Time	39%	43%	37%	43%	44%	53%	46%	61%	49%	67%	
Part-Time	61%	57%	63%	57%	56%	47%	54%	39%	51%	33%	
Equivalent Full-Time	3,282	3,449	2,569	2,600	3,058	100	3,417	208	3,859	290	
On Campus Student Demographics											
Headcount by Gender:	Male	2,215	2,298	2,076	2,118	2,069	75	2,231	121	2,375	181
	Female	2,823	2,844	2,544	2,679	2,602	70	2,868	154	3,177	195
Headcount by Ethnicity:	Asian	262	325	350	498	589	12	677	23	752	25
	Black	642	787	733	868	852	7	959	19	1,153	20
	Hispanic	186	204	201	267	271	3	321	13	343	13
	Multiracial	56	93	108	153	163	7	217	12	304	10
	Native American	17	17	14	18	15	1	19	1	20	0
	White	3,875	3,716	3,214	2,993	2,781	115	2,906	207	2,980	308
Others:	Senior Citizens	5	6	6	6	8	0	13	0	20	1
	Non-U.S.	496	665	635	872	974	12	1,148	28	1,339	27
	Average Age	25.0	25.3	24.5	24.1	24.1	20.1	24.3	22.1	24.4	22.1
	Median Age	23	23	22	22	22	19	22	20	22	20

Note: For the years 2000 through 2002, there are two numbers for each category. The first one is for Dunwoody and the second Alpharetta respectively. The two charts are for Dunwoody only.



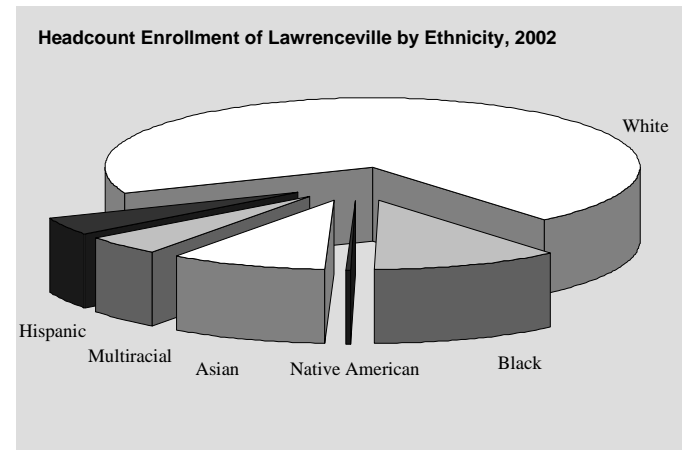
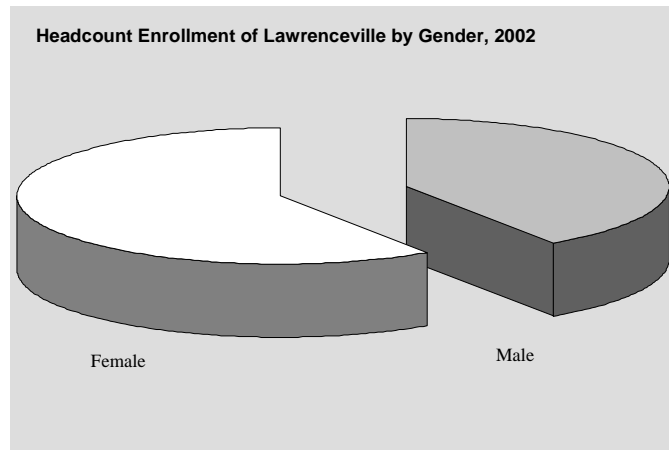
Enrollment of GPC Dunwoody, Fall 1996-2002 (Continued)

On-Campus Enrollment by Schedule										
	1996	1997	1998	1999	2000	2001	2002			
Day	3,565	3,585	3,387	3,768	3,908	145	4,202	274	4,710	376
Evening	2,472	2,417	2,259	2,402	2,574	42	2,954	73	3,196	93
Weekend	286	314	299	713	823	13	914	32	1,025	28
On-Campus Enrollment by Classification										
Learning Support/Developmental Studies	1,238	1,245	1,006	1,033	1,018	20	1,057	53	1,219	128
Joint Enrollment	127	158	161	137	127	43	136	16	112	12
Freshman	1,802	1,745	1,661	1,797	1,811	54	2,002	143	2,195	159
Sophomore	1,757	1,824	1,640	1,626	1,551	27	1,675	48	1,817	63
Transient	104	110	84	109	88	1	122	11	80	11
Unclassified	0	60	68	95	78	0	107	4	129	3
On-Campus New Student Enrollment by Classification										
Learning Support/Developmental Studies	577	573	468	518	502	15	544	34	615	82
Joint Enrollment	109	153	154	129	105	41	122	15	104	12
Freshman	280	180	201	293	287	24	312	44	575	31
Transfer	292	301	268	310	308	4	372	23	122	28
Transient	51	45	35	49	32	0	53	6	35	3
Unclassified	0	49	32	55	37	0	48	0	67	2
Total	1,309	1,301	1,158	1,354	1,271	84	1,451	122	1,518	158
On-Campus Students Needing Learning Support										
Math	1,051	1,067	883	871	847	15	883	52	1,048	105
English	319	323	248	308	284	6	298	7	331	44
Reading	222	209	178	231	261	4	181	5	211	29
Unduplicated Head Count	1,238	1,245	1,006	1,033	1,016	20	1,057	53	1,219	128
On-Campus Student Enrollment by Residence										
Georgia	4,706	4,755	4,288	4,361	4,101	133	4,482	242	4,876	355
Out-of-State	304	356	284	381	495	11	529	32	552	17
Non-Resident Tuition Waived	28	31	48	55	75	1	88	1	124	4

Note: For the years 2000 through 2002, there are two numbers. The first one is for Dunwoody and the second Alpharetta, respectively.

Enrollment of GPC Lawrenceville, Fall 1996-2002

		On-Campus Student Enrollment						
		1996	1997	1998	1999	2000	2001	2002
Total Headcount		2,781	2,956	2,877	3,252	3,279	3,602	4,933
	Full-Time	45%	48%	46%	49%	50%	52%	55%
	Part-Time	55%	52%	54%	51%	50%	48%	45%
Equivalent Full-Time		1,885	2,022	1,720	1,828	2,196	2,445	3,468
		On-Campus Student Demographics						
Headcount by Gender:	Male	1,143	1,250	1,240	1,436	1,406	1,525	2,001
	Female	1,638	1,706	1,637	1,816	1,816	2,077	2,932
Headcount by Ethnicity:	Asian	83	105	124	173	233	278	461
	Black	151	214	179	253	251	303	562
	Hispanic	77	77	71	120	118	126	205
	Multiracial	26	42	51	62	102	113	233
	Native American	4	11	3	11	8	6	14
	White	2,440	2,507	2,449	2,633	2,567	2,776	3,458
Others:	Senior Citizens	1	1	0	1	0	0	2
	Non-U.S.	133	145	165	243	287	321	564
	Average Age	23.4	24.1	22.8	22.9	22.6	22.7	23.2
	Median Age	21	23	20	20	20	20	21

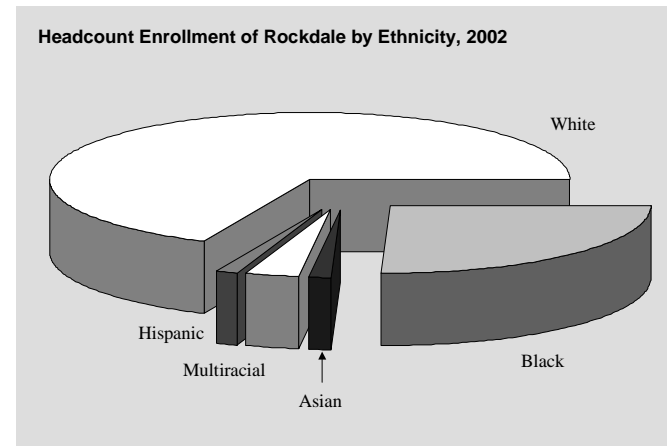
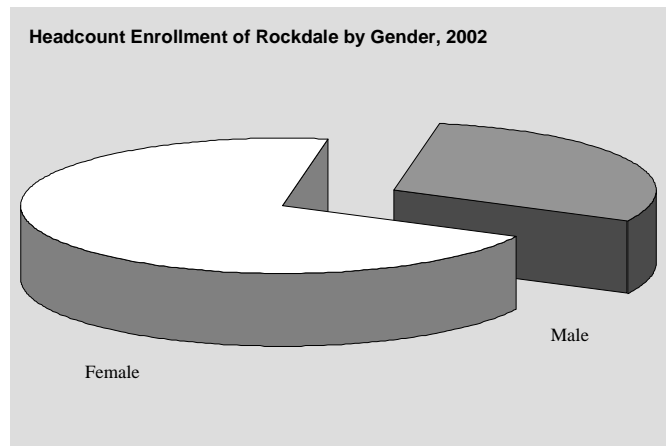


Enrollment of GPC Lawrenceville, Fall 1996-2002 (Continued)

On-Campus Enrollment by Schedule							
	1996	1997	1998	1999	2000	2001	2002
Day	1919	2069	2189	2,643	2,575	3,042	4,145
Evening	1212	1343	1300	1,617	1,823	1,956	2,874
Weekend	0	84	132	506	546	718	1,052
On-Campus Enrollment by Classification							
Learning Support/Developmental Studies	687	675	626	711	769	892	1,059
Joint Enrollment	94	112	124	146	107	130	192
Freshman	1,151	1,207	1,255	1,401	1,368	1,518	2,086
Sophomore	817	914	818	929	965	1,001	1,455
Transient	31	38	34	45	45	42	72
Unclassified	0	10	20	20	25	19	69
On-Campus New Student Enrollment by Classification							
Learning Support/Developmental Studies	386	390	398	435	459	587	642
Joint Enrollment	83	107	118	142	97	128	182
Freshman	287	257	300	296	329	241	719
Transfer	159	162	149	197	188	284	115
Transient	12	13	14	15	12	17	31
Unclassified	0	8	8	9	8	5	33
Total	927	937	987	1,094	1,093	1,262	1,722
On-Campus Students Needing Learning Support							
Math	594	539	521	555	577	736	897
English	203	236	228	259	297	294	289
Reading	142	153	167	207	222	202	226
Unduplicated Head Count	687	675	626	711	769	892	1,059
On-Campus Student Enrollment by Residence							
Georgia	2,686	2,857	2,791	3,164	3,186	3,498	4,760
Out-of-State	81	88	74	78	83	96	160
Non-Resident Tuition Waived	14	11	12	10	10	8	13

Enrollment of GPC Rockdale, Fall 1996-2002

		On-Campus Student Enrollment						
		1996	1997	1998	1999	2000	2001	2002
Total Headcount		640	689	689	757	817	908	1,179
	Full-Time	33%	38%	36%	39%	40%	44%	47%
	Part-Time	67%	62%	64%	61%	60%	56%	53%
Equivalent Full-Time		369	422	356	354	501	582	767
		On-Campus Student Demographics						
Headcount by Gender:	Male	239	249	245	276	247	281	350
	Female	401	440	444	481	570	627	829
Headcount by Ethnicity:	Asian	4	4	11	11	13	12	16
	Black	64	58	76	116	119	145	301
	Hispanic	11	6	6	13	15	10	16
	Multiracial	2	10	5	9	11	21	39
	Native American	1	1	3	3	3	3	0
	White	558	610	588	605	656	717	807
Others:	Senior Citizens	0	1	0	1	1	2	2
	Non-U.S.	14	12	17	30	19	22	39
	Average Age	25.8	25.3	24.9	24.7	24.7	24.4	24.8
	Median Age	22	23	22	21	21	21	21



Enrollment of GPC Rockdale, Fall 1996-2002 (Continued)

On-Campus Enrollment by Schedule							
	1996	1997	1998	1999	2000	2001	2002
Day	368	427	422	517	602	677	878
Evening	367	357	420	439	545	665	806
Weekend	0	0	0	16	54	56	241
On-Campus Enrollment by Classification							
Learning Support/Developmental Studies	205	207	176	193	213	266	326
Joint Enrollment	15	22	15	13	8	22	37
Freshman	255	264	267	314	350	367	464
Sophomore	156	188	223	231	231	232	322
Transient	9	7	5	4	10	12	11
Unclassified	0	1	3	2	5	9	19
On-Campus New Student Enrollment by Classification							
Learning Support/Developmental Studies	110	112	100	105	125	166	198
Joint Enrollment	15	21	15	13	7	21	36
Freshman	37	43	42	47	61	67	113
Transfer	30	35	33	31	47	50	26
Transient	5	2	1	3	5	6	4
Unclassified	0	1	2	1	2	2	6
Total	197	214	193	200	247	311	383
On-Campus Students Needing Learning Support							
Math	185	172	151	163	163	212	276
English	45	49	30	47	68	82	79
Reading	31	36	37	36	54	50	77
Unduplicated Head Count	205	207	176	193	213	266	326
On-Campus Student Enrollment by Residence							
Georgia	635	683	684	743	801	893	1,147
Out-of-State	3	4	3	14	15	15	29
Non-Resident Tuition Waived	2	2	2	0	1	0	3

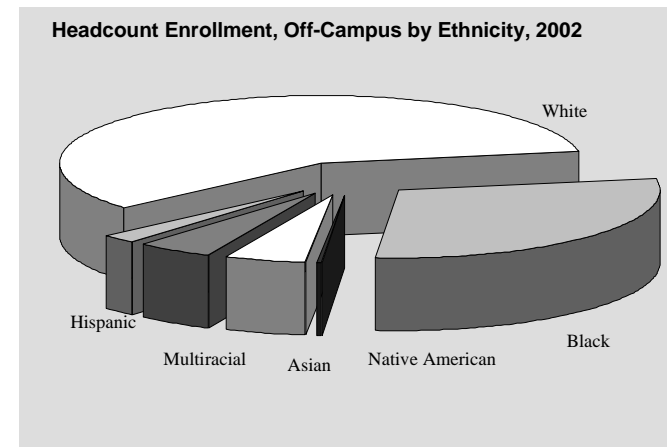
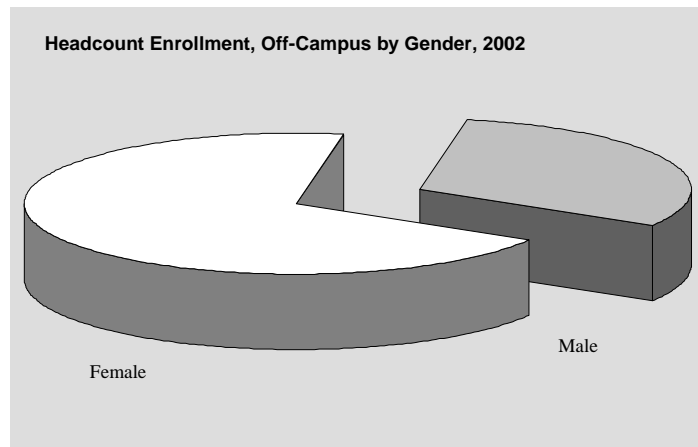
Enrollment of GPC Off-Campus/Distance Ed., Fall 1996-2002

Off-Campus/Distance Education Student Enrollment

	1996	1997	1998	1999	2000	2001	2002
Total Headcount	713	915	1,031	1,517	1,376	1,721	1,961
Full-Time	24%	23%	19%	41%	44%	32%	39%
Part-Time	76%	77%	81%	59%	56%	68%	61%
Equivalent Full-Time	281	357	255	337	909	971	1,209

Off-Campus/Distance Education Student Demographics

Headcount by Gender:	Male	225	269	326	554	462	567	607
	Female	488	646	705	963	914	1,154	1,354
Headcount by Ethnicity:	Asian	22	36	53	96	111	80	96
	Black	150	207	206	302	407	460	571
	Hispanic	8	16	14	23	33	43	43
	Multiracial	15	13	13	27	31	60	97
	Native American	1	3	0	2	3	4	6
	White	517	640	727	1,067	791	1,074	1,148
Others:	Senior Citizens	0	0	0	1	0	1	0
	Non-U.S.	22	41	53	122	151	122	157
	Average Age	24.6	24	22.6	23.3	26.3	24.5	25.6
	Median Age	21	22	18	20	22	22	23



Enrollment of GPC Off-Campus/Distance Ed., Fall 96-02 (Continued)

Off-Campus/Distance Education Enrollment by Schedule							
	1996	1997	1998	1999	2000	2001	2002
Day	36	0	0	NA	966	1,198	1,152
Evening	0	0	25	NA	711	588	777
Weekend	0	0	0	NA	292	256	346
Off-Campus/Distance Education Enrollment by Classification							
Learning Support/Developmental Studies	33	42	59	106	149	103	242
Joint Enrollment	303	467	543	585	NA	447	296
Freshman	153	131	158	309	479	404	534
Sophomore	205	251	253	462	674	695	796
Transient	19	16	12	37	39	35	53
Unclassified	0	3	6	18	21	37	40
Off-Campus/Distance Education New Student Enrollment by Classification							
Learning Support/Developmental Studies	7	7	16	39	60	39	91
Joint Enrollment	292	467	542	581	11	440	290
Freshman	14	6	9	25	38	22	90
Transfer	25	24	21	41	91	79	44
Transient	10	8	6	19	19	14	21
Unclassified	0	2	2	9	5	19	27
Total	348	514	596	714	224	613	563
Off-Campus/Distance Education Students Needing Learning Support							
Math	31	40	57	97	126	93	233
English	4	2	6	8	20	12	27
Reading	2	1	0	9	16	6	15
Unduplicated Head Count	33	42	59	106	149	103	242
Off-Campus/Distance Education Student Enrollment by Residence							
Georgia	694	893	1,007	1,461	1,280	1,668	1,892
Out-of-State	17	20	20	52	84	47	54
Non-Resident Tuition Waived	2	2	4	4	12	6	15

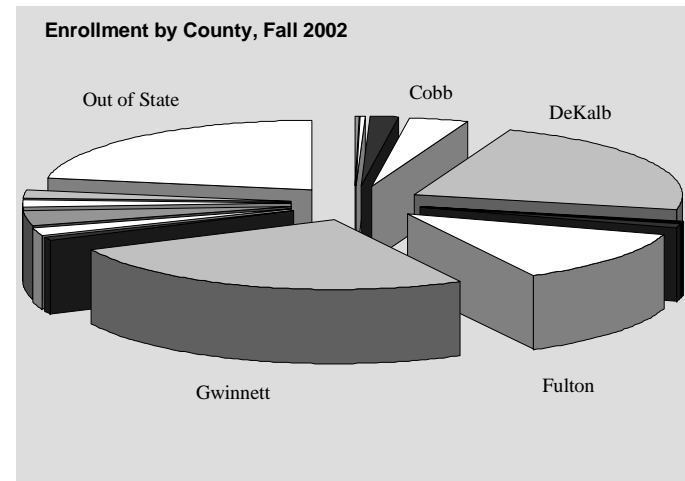
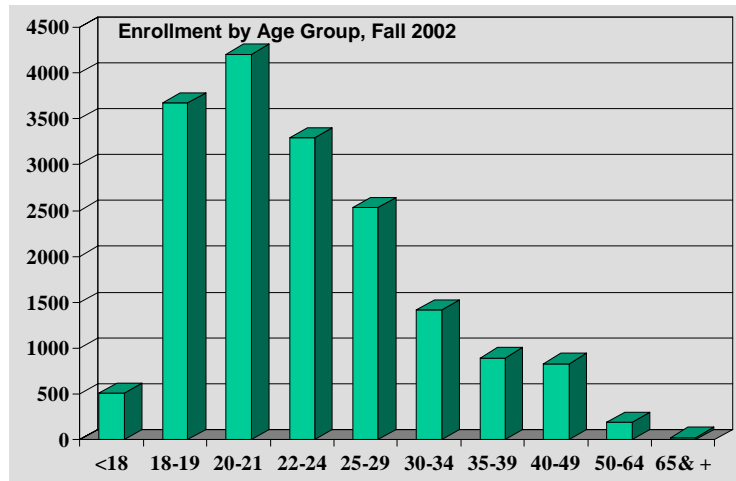
Enrollment by Age Group, Fall 1998-2002; and by County, Fall 2002

Enrollment by Age Group, Fall 1998 to 2002

	1998	1999	2000	2001	2002
Under 18	585	604	633	511	511
18-19	2,763	3,024	2,934	3,297	3,672
20-21	3,057	3,249	3,436	3,766	4,204
22-24	2,645	2,569	2,445	2,886	3,292
25-29	2,302	2,098	1,927	2,109	2,533
30-34	1,223	1,107	988	1,230	1,418
35-39	673	657	642	731	894
40-49	685	625	555	672	833
50-64	140	141	137	149	191
65 & +	12	17	11	21	25
Total	14,085	14,091	13,708	15,372	17,573

Enrollment by County, Fall 2002

County	Enrollment	Percent
Cherokee	61	.3
Clarke	25	.1
Clayton	324	1.9
Cobb	617	3.5
DeKalb	3,953	22.5
Douglas	62	.4
Fayette	30	.2
Forsyth	141	.8
Fulton	2,213	12.6
Gwinnett	4,555	25.9
Henry	128	.7
Newton	303	1.7
Rockdale	640	3.7
Walton	251	1.4
Others in State	389	2.2
Out of State	3,881	22.1
Total	17,573	100.0



High Schools Attended by 100 or More Students in Fall 2001-02

High School		Total Fall Enrollment		New Student Enrollment		Enrollment of New HS Grads		
		2001	2002	2001	2002	2001	2002	
DeKalb	Clarkston	142	152	38	36	28	18	
	Columbia	99	116	29	33	7	17	
	Cross Keys	121	142	27	41	17	27	
	Dunwoody	231	224	96	87	19	27	
	Lakeside	162	205	62	74	27	37	
	Lithonia	119	135	32	40	15	17	
	McNair	96	114	20	22	4	7	
	Open Campus	179	210	39	50	15	19	
	Redan	200	207	47	44	23	25	
	Southwest DeKalb	172	167	60	41	17	14	
	Stone Mountain	123	151	26	41	12	24	
	Tucker	144	161	40	44	15	25	
	Fulton	Chattahoochee/Crestwood	184	200	58	65	24	24
		Independence	143	147	40	34	7	9
Milton		223	268	134	145	32	39	
North Springs		160	155	78	58	9	13	
Roswell		96	114	27	41	18	18	
Gwinnett		Berkmar	270	309	79	84	59	55
	Brookwood	380	410	161	144	78	86	
	Centennial	86	119	39	53	19	24	
	Central Gwinnett	227	262	75	90	47	63	
	Collins Hill	341	470	140	196	90	125	
	Dacula	149	233	53	119	33	78	
	Duluth	273	298	112	112	55	41	
	Meadowcreek	270	289	67	80	39	55	
	Norcross	197	203	52	53	25	24	
	Parkview	270	309	107	95	61	61	
	Phoenix (Open Campus)	215	253	62	70	16	30	
	Shiloh	255	280	72	87	41	55	
	South Gwinnett	363	363	141	114	76	70	
	Rockdale	Heritage	187	208	95	89	20	33
		Rockdale	164	177	73	61	21	17
Salem High School		130	120	44	47	16	20	
Walton	Loganville	121	143	42	67	27	42	

Note: All numbers are HS students attending GPC. New HS Grad refers to a student new to GPC and newly graduated from HS. Table includes high schools that enrolled 100 or more students to GPC in fall 2002.

International Student Enrollment I, Fall 1999-2002

Country	99	00	01	02	Country	99	00	01	02	Country	99	00	01	02
Afghanistan	11	8	5	10	Cayman Island	1	NA	NA	NA	Ghana	14	22	19	28
Albania	2	1	3	4	Cape Verde	NA	NA	1	NA	Greece	1	2	2	1
Algeria	6	7	3	3	Central Africa	1	1	NA	1	Grenada	NA	1	1	NA
Angola	1	1	2	1	Chad	NA	NA	1	1	Guatemala	5	7	8	6
Antarctica	1	1	NA	NA	Chile	3	4	4	5	Guinea	4	5	8	11
Antigua	1	NA	1	1	China	33	34	37	51	Guyana	22	15	19	27
Argentina	3	3	4	4	Colombia	48	61	88	102	Haiti	17	18	28	34
Armenia	NA	NA	2	1	Congo/Brazzaville	1	NA	9	7	Honduras	3	5	5	5
Australia	1	5	5	6	Congo/Kinshasa	NA	NA	NA	4	Hong Kong	15	13	15	18
Austria	1	4	6	5	Coral Sea Island	1	1	NA	NA	Hungary	NA	NA	1	2
Azerbaijan	1	1	1	1	Costa Rica	4	3	5	4	India	117	113	145	170
Bahamas	11	6	6	9	Cote D'Ivoire	8	15	NA	NA	Indonesia	35	38	34	36
Bahrain	NA	NA	NA	1	Croatia	NA	2	3	3	Iran	37	44	53	74
Bangladesh	32	36	34	39	Cuba	6	4	2	7	Iraq	4	5	5	4
Barbados	NA	2	5	3	Czech Rep.	1	1	1	1	Ireland	7	2	2	4
Belarus	3	5	9	9	Czechoslovakia	1	NA	6	4	Israel	9	8	8	10
Belgium	7	4	5	3	Denmark	NA	NA	NA	1	Italy	4	5	2	2
Belize	1	2	1	2	Djibouti	1	1	1	1	Ivory Coast	NA	NA	16	19
Benin	NA	NA	3	4	Dominica	1	2	4	6	Jamaica	104	85	113	126
Bermuda	4	5	2	6	Dominican R	9	5	6	5	Japan	32	33	33	27
Bolivia	2	2	2	4	Ecuador	2	1	3	10	Jordan	2	4	3	4
Bosnia/Herzeg	24	29	47	81	Egypt	1	NA	NA	2	Kazakhstan	NA	NA	1	1
Botswana	NA	NA	1	1	El Salvador	7	10	11	14	Kenya	16	19	15	19
Bouvet Island	NA	NA	1	NA	Estonia	NA	NA	NA	3	Kiribati	NA	NA	1	NA
Brazil	29	32	34	32	Eritrea	18	14	16	16	Korea, DPR	NA	NA	2	3
Bulgaria	6	3	4	10	Ethiopia	101	94	108	144	Korea, R	157	164	198	200
Burkina Faso	NA	NA	2	3	Fiji	1	NA	NA	NA	Laos	14	9	9	9
Burma	NA	3	5	8	Finland	3	5	2	NA	Latvia	3	5	6	2
Burundi	NA	NA	NA	1	France	22	16	15	11	Lebanon	8	8	13	10
Cambodia	13	8	8	12	Gabon	1	NA	1	NA	Liberia	27	28	35	34
Cameroon	13	11	17	39	Gambia	5	5	8	5	Liechtenstein	NA	NA	1	NA
Canada	59	50	49	63	Germany	22	18	NA	NA					

International Student Enrollment II, Fall 1999-2002

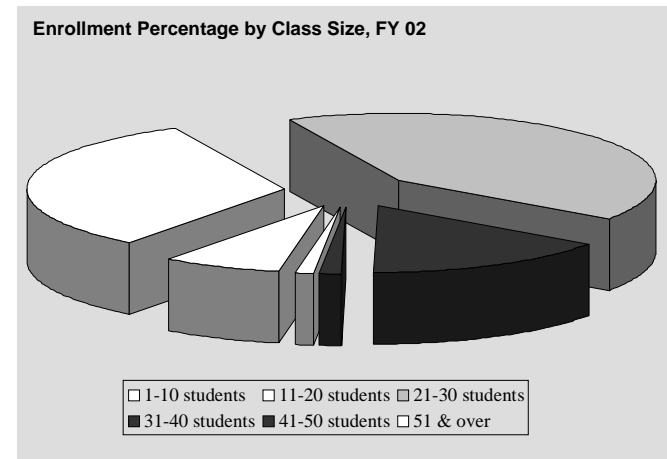
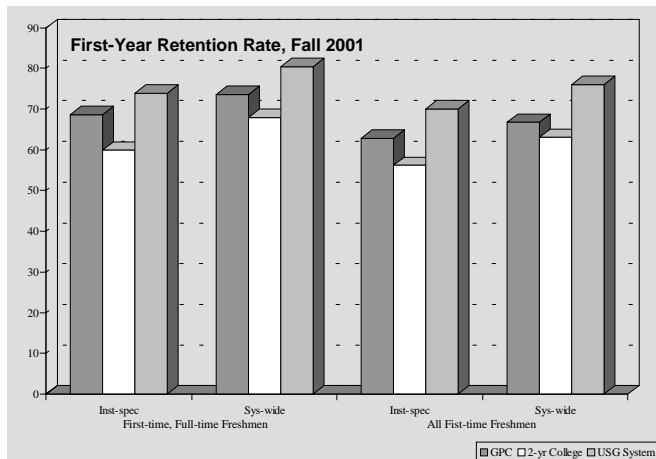
Country	99	00	01	02	Country	99	00	01	02	Country	99	00	01	02
Lithuania	2	2	4	7	Philippines	9	12	14	19	Tanzania	7	6	10	2
Macau	NA	1	NA	NA	Poland	12	10	10	23	Thailand	10	20	21	24
Macedonia	NA	1	1	NA	Portugal	1	NA	1	1	Togo	3	3	2	2
Malawi	NA	NA	NA	2	Romania	29	34	33	30	Trinidad/Tobago	30	28	34	33
Malaysia	7	10	12	13	Russia	32	27	35	32	Tunisia	2	5	1	2
Mali	3	4	4	3	Rwanda	NA	NA	3	2	Turkmenistan	NA	NA	NA	1
Malta	NA	NA	NA	1	Saudi Arabia	4	4	4	6	Turkey	6	11	14	13
Mauritius	NA	NA	1	2	Senegal	13	14	13	15	Uganda	3	2	1	NA
Mexico	29	29	36	53	Seychelles	NA	NA	1	NA	Ukraine	8	7	5	9
Moldova	2	3	3	2	Sierra Leone	NA	NA	NA	19	United Arab Emirates	NA	NA	NA	1
Mongolia	NA	NA	NA	1	Slovakia	NA	NA	1	NA	United Kingdom	35	39	37	45
Morocco	8	8	14	14	Somalia	21	33	38	51	Uruguay	NA	2	1	2
Nepal	2	3	2	4	South Africa	12	12	22	23	Uzbekistan	1	2	NA	3
Netherlands	4	5	5	1	Spain	11	8	5	3	Venezuela	21	27	22	24
Netherlands Ant	NA	NA	1	1	Sri Lanka	NA	NA	1	1	Vietnam	217	230	265	326
New Zealand	NA	NA	NA	1	St. Kitts & Nevis	2	2	3	1	West Germany	NA	NA	19	21
Nicaragua	6	3	5	6	St. Lucia	1	1	NA	1	Yemen	NA	NA	NA	1
Niger	NA	NA	NA	1	St. Vincent	1	NA	NA	NA	Yugoslavia	4	7	5	7
Nigeria	116	107	129	166	Sudan	6	6	12	17	Zaire	10	NA	NA	NA
Niue	NA	NA	1	1	Suriname	1	6	1	1	Zambia	2	1	3	3
Norway	2	2	1	1	Sweden	13	13	8	9	Zimbabwe	1	5	7	12
Pakistan	40	43	69	78	Switzerland	NA	2	NA	NA					
Panama	8	8	9	11	Syria	1	1	3	6	Total Students	2,008	2,061	2,428	2,895
Paraguay	NA	1	1	1	Taiwan	46	55	59	49	Total Countries	122	121	138	145
Peru	12	11	15	24	Tajikistan	1	1	1	1	or Regions				

Retention Rate, Fall 2001; Enrollment by Class Size, FY 1996-02

First-Year Retention Rate, Fall 2001						
Institution	First-Time, Full-Time Freshmen			All First-Time Freshmen		
	Total Freshmen	Institution-specific Rate	System-wide Rate	Total Freshmen	Institution-specific Rate	System-wide Rate
GPC	1,820	68.6%	73.6%	2,910	62.8%	66.8%
Two-Year College Total	7,681	59.9%	67.9%	11,067	56.2%	63.1%
System Total	30,687	73.9%	80.4%	36,215	70.0%	76.0%

Source: Board of Regents, Graduation and Retention Report (on the web)

Enrollment Percentage by Class Size, FY 1996-2002							
Class Size	FY 96	FY 97	FY 98	FY 99	FY 00	FY 01	FY 02
1-10 students	12.0%	12.0%	17.7%	19.2%	14.5%	13.5%	7.5%
11-20 students	39.6%	42.3%	41.9%	40.8%	38.0%	21.7%	32.9%
21-30 students	37.3%	35.5%	29.4%	28.5%	32.8%	40.3%	41.5%
31-40 students	9.1%	8.6%	9.9%	10.2%	12.7%	18.1%	15.7%
41-50 students	1.3%	1.2%	0.5%	0.6%	1.0%	5.0%	1.3%
Over 50 students	0.7%	0.4%	0.6%	0.7%	1.0%	1.4%	1.1%



Student Financial Aid Awarded by Source, FY 1998-02

Awards	FY 1998		FY 1999		FY 2000		FY 2001		FY 2002	
	Student #	\$ Amount	Student #	\$ Amount	Student #	\$ Amount	Student #	\$ Amount	Student #	\$ Amount
GRANTS										
Pell	4,343	6,473,145	4,293	6,423,000	3,717	5,898,089	6,039	6,393,405	4,746	9,190,456
SEOG	545	218,602	651	266,700	992	322,349	538	247,137	756	288,267
Georgia Incentive	73	16,100	N/A	N/A	N/A	N/A	N/A	N/A	N/A	N/A
HOPE	2,612	2,240,057	3,097	2,767,844	6,346	3,283,802	4,184	3,765,968	4,290	4,354,052
LOANS										
GSL	4,860	8,932,197	1,626	3,567,099	*	*	*	*	*	*
Institutional	122	18,000	N/A	N/A	N/A	N/A	N/A	N/A	165	47,677
Regents	30	17,200	30	15,000	N/A	N/A	N/A	N/A	N/A	N/A
PLUS	15	80,514	1	1,274	1	1,637	0	0	0	0
Subsidized	NA	NA	NA	NA	1,315	2,856,001	1,342	2,813,730	1,557	3,191,923
Unsubsidized	NA	4,044,366	1,200	3,150,791	945	2,327,305	966	2,297,532	1,155	2,837,175
SCHOLARSHIPS										
Institutional	908	298,821	357	167,504	430	170,668	486	304,325	288	222,574
Other	N/A	N/A	122	95,666	98	142,210	42	14,362	41	60,947
STUDENT EMPLOYMENT										
College Work Study	232	461,687	140	309,923	129	310,370	113	547,787	192	485,938
TOTAL AWARDED	13,740	22,800,689	11,517	16,764,801	13,973	15,312,431	13,710	16,384,246	13,190	20,679,009

* GSL was replaced by Subsidized and Unsubsidized Loans in FY 2000.

Entering Freshman SAT, Fall 98-02; Regents' Test, Fall 02

Average Composite Scores, Entering Freshmen, Fall 1998 – 2002

	1998	1999	2000	2001	2002
Georgia Perimeter College	888	884	881	893	889
Two-year College Totals	885	879	878	884	888
University System of Georgia	1,013	1,016	1,021	1,026	1,030

- Note:**
1. This table includes only those freshmen who attended at least five quarter credit hours by Spring quarter for cohorts through 1996 or three semester hours for FY 1999 on.
 2. The composite score is derived by summing the SAT verbal score and the SAT math score. The possible range for SATV and SATM is 200 to 800; the possible composite score range is 400 to 1600.
 3. Not including are students with missing data on SAT, such as students with GED's, those admitted into programs that do not require SAT scores, and those who were admitted based on ACT scores.

Source: Office of Strategic Research and Analysis website (<http://www.usg.edu/admin/sra/>), University System of Georgia, Atlanta, Georgia.

Regents' Test Passing Rates, Fall 2002

	First-Timer**				Repeater**			
	N	Reading % Pass	Essay % Pass	Total % Pass	Reading		Essay	
					N	% Pass	N	% Pass
Georgia Perimeter College	1,368	77.6	76.2	64.8	490	40.0	315	62.5
System Total*	16,400	85.0	82.5	73.9	3,607	44.9	3,212	64.4

Note: * "System Total" numbers are generated based on all USG institutions, including all research universities, regional universities, state universities and colleges, and two-year colleges. The numbers for the two-year college group are not available.

** The BOR Repeater report is in a different data format from the First-Timer format. The data formats reported in this table are following the BOR formats.

Source: Regents' Testing Program Passing Rates for Examinees Repeating the Test Fall Semester, 2002; Spring Semester, 2003. Office of Strategic Research and Analysis, University System of Georgia, Atlanta.

Applications Received, Fall 1998-02; Testing Activities, FY 1998-02

Applications Received, Fall 1998-02										
Applications Received	1998		1999		2000		2001		2002	
	#	%	#	%	#	%	#	%	#	%
Total App. Received	12,963	100	12,123	100	13,756	100	15,307	100	18,549	100
Completed Files	8,228	63	7,693	64	8,289	60	9,345	61	10,998	59
Completed – Registered	4,231	33	5,000	41	5,149	37	5,845	38	6,599	36
Completed – Unregistered	3,997	30	2,693	23	3,140	23	3,500	23	4,399	24
Incomplete Files	4,735	37	4,430	36	5,467	40	5,962	39	7,551	41

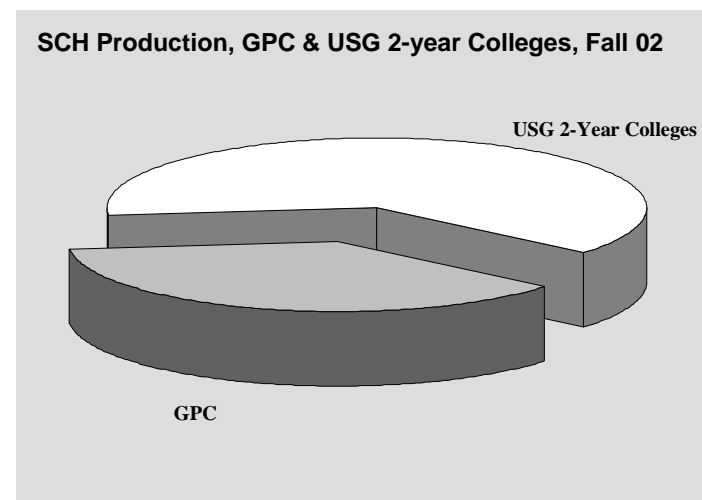
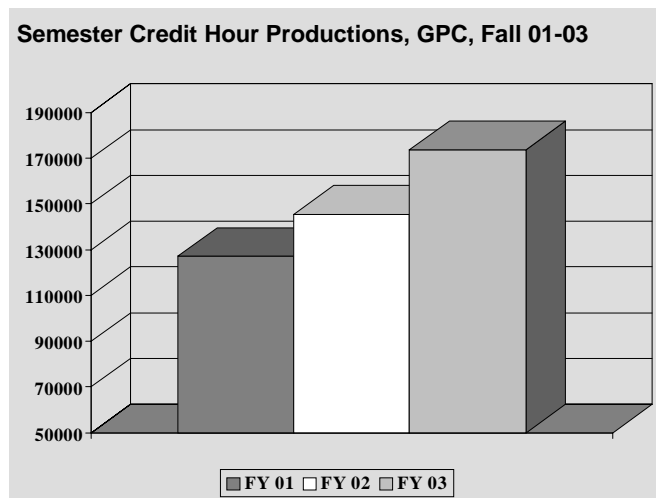
Testing Activities, FY 1998-02					
Tests Administered	FY 1998	FY 1999	FY 2000	FY 2001	FY 2002
ACT	209	187	89	140	152
Alternate Regents'	360	390	334	434	520
BSE/CPE-Exit	3,974	2,634	2,839	1,045	54
BSE/CPE-Placement	5,904	4,855	4,656	3,192	146
CLEP	237	124	136	132	58
COMPASS	NA	NA	2,835	6,545	12,627
Dental Hygiene Board	39	24	25	22	22
English as a Second Language Placement (ENSL)	821	968	809	672	1,141
Independent Study	39	25	26	33	25
Institutional SAT	1,199	1,216	970	1,269	1,494
Regents' Test	4,699	3,282	5,520	7,260	7,875
SAT I and II Assessment Tests	1,562	1,491	901	1,269	845
Test of English as a Foreign Language (TOEFL)	439	722	962	691	868
Residual ACT	NA	NA	NA	21	25
*Other	1,666	2,964	NA	NA	NA
Total	21,148	18,882	20,102	22,725	25,852

Semester Credit Hour Report, GPC & USG FY 01-03

	FY 2001			FY 2002			FY 2003		
	Summer	Fall	Spring	Summer	Fall	Spring	Summer	Fall	Spring
Georgia Perimeter College	48,510	127,152	129,578	55,370	145,555	152,570	70,085	173,714	180,719
USG Two-year College	121,970	373,672	360,988	137,730	417,525	410,504	167,592	468,082	465,815
USG Grand Totals	699,711	2,319,078	2,223,367	740,301	5,457,608	2,391,593	828,050	2,659,304	2,573,003

Source: Office of Strategic Research and Analysis website, <http://www.usg.edu/admin/sra/datasys/cir/census/>, University System of Georgia, Atlanta, Georgia.

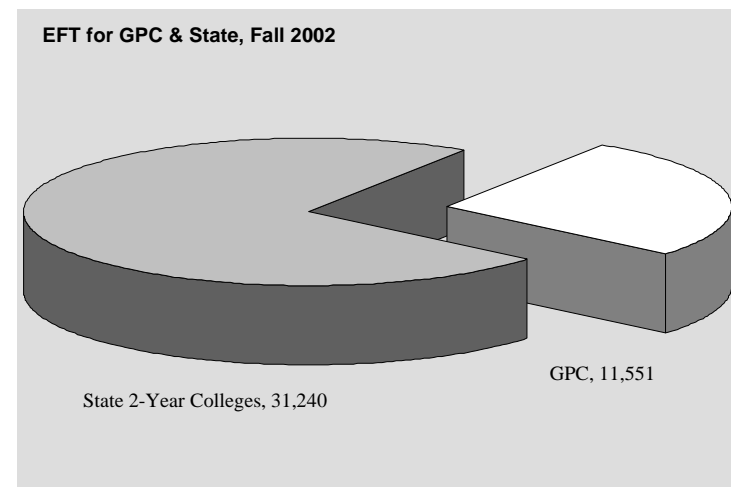
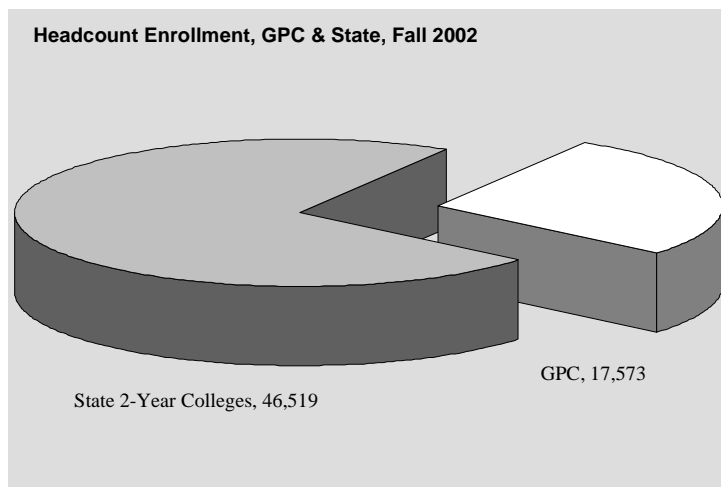
Note: The following two charts show data for fall semesters, not whole fiscal years.



Comparison with Other USG Two-Year Colleges, Fall 2002

Institution	Headcount Enrollment	EFT	Non-White %	Female %	GA Residents %	Freshmen %	New Freshmen %
Abraham Baldwin Agric. College	3,033	2,228	21.8	54.3	95.4	58.7	27.1
Atlanta Metro. College	1,995	1,271	99.3	68.1	88.5	72.8	15.7
Bainbridge College	2,047	1,212	41.9	64.3	98.9	50.5	13.8
Coastal GA Comm. College	2,398	1,361	28.2	63.9	93.5	62.4	21.8
Darton College	3,357	2,275	43.5	69.4	96.2	63.7	22.3
East Georgia College	1,499	1,040	39.4	62.3	98.3	76.2	33.0
Floyd College	2,863	1,888	14.8	66.0	97.8	68.3	23.1
Gainesville College	4,163	2,840	12.3	57.2	97.2	63.9	24.6
Georgia Perimeter College	17,573	11,551	51.7	62.3	93.4	62.5	16.4
Gordon College	3,116	2,436	28.2	63.3	98.5	67.7	31.8
Middle Georgia College	2,214	1,648	31.5	55.1	97.9	64.6	28.7
South Georgia College	1,361	961	25.9	64.1	98.0	64.2	30.0
Waycross College	900	529	23.1	69.6	99.0	51.2	18.7
Two-Year Colleges Total	46,519	31,240	39.5	62.4	95.3	63.4	21.4

Source: Office of Strategic Research and Analysis website (<http://www.usg.edu/admin/sra/>), University System of Georgia, Atlanta, Georgia.



Athletics, 2002-2003

Colors: Gold, Cardinal, Blue

Affiliation: National Junior College Athletic Association

Mascot: Jaguar

Conference: Georgia Junior College Athletic Association

RECENT ACCOMPLISHMENTS

Baseball

Head Coach: Ted Wallen

Assistant Coach: Chad Dorman

- 19 players drafted since 1990; also since 1990, 14 All-Tournament players, 36 All-Region selections, 9 All-Americans, and 1 Academic All-American

Softball

Head Coach: Ed Schutte

Assistant Coach: Pam Frey

- Won 3 games in 2003, the most wins for the program since the switch to fast pitch softball in 1997.
- Won GJCAA Championship in 2003

Basketball (Men's)

Head Coach: Alfred Barney

Assistant Coach: Greg Smarr, David Dennis

- GJCAA Regular Season Championship, finished 32-6 in 2003
- Qualified for the National Tournament in 1997, 2001 & 2003. Finished 4th in 2003

Basketball (Women's)

Head Coach: James Waldon

Assistant Coach: Christina Shafer

- GJCAA & Region XVII Champions in 2001
- GJCAA & Region XVII Runners Up in 2003

Soccer (Men's)

Head Coach: Marc Zagara

Assistant Coach: Ron Moore

- Advanced to National Tournament in 1999 and 2000
- Past nine seasons 213-55-25 records. The team has six state championships, three Southeastern championships, and three national tournament appearances since 1992.
- Zagara's teams have been nationally ranked every year.
- Finished 9th in 2002 national ranking.

Soccer (Women's)

Head Coach: Georges Edeline

Assistant Coach: Franklin Lawson

- Had All-Region XVII players in 2002
- Won a program record 12 games in 2002

Tennis (Men's)

Head Coach: Solomon Demeke

- 1998, 1999, 2000 and 2001 National Champions
- Had top player in junior college tennis 1998-2003
- Finished in 2nd place at 2003 National Tournament

Tennis (Women's)

Head Coach: Greg Ward

- Won 2000 National Championship
- Regional Champions in 1999 and 2000
- Finished 7th at 1999 National Tournament
- Finished 11th at 2003 National Tournament

Sports Information Director: Daryl Brooks

Students with Disabilities, from 98-99 to 02-03

	98-99	99-00	00-01	01-02	02-03
Visual	37	23	8	9	10
Deaf/Hard of Hearing	28	33	20	26	23
Brain Injury	38	29	15	15	16
Motor/Mobility	52	48	12	23	15
Psychological/Psychiatric	34	25	9	22	24
Learning Disability	84	97	115	130	89
Attention Deficit Hyperactivity Disorder (ADHD)	69	62	61	70	53
Both LD/ADHD	23	25	12	39	16
Chronic Illness/Medical	37	33	10	13	21
Multiple Disabilities	38	30	11	24	15
Other	10	15	8	20	0
TOTAL	450	420	281	391	300

Source: Georgia Perimeter College Office of Disability Services, as reported to Board of Regents of the University System of Georgia.

Note: Reporting year begins in Summer and ends with Spring semester. Table shows number of students for whom accommodations or services were provided.

Funding and Facilities

Student Tuition and Fees, FY 2002-2003

Tuition (per hour)	
In-State	\$56.00
Out-of-State	\$222.00
Required Fees	
Admission Application	\$20.00
Athletic Fee	\$27.00
Parking	\$15.00
Student Activity (except Rockdale Center)	\$42.00
Student Activity (Rockdale Center)	\$20.00
Technology	\$38.00
Special Fees	
Applied Music	\$75.00
College by TV (Tele Course)	\$50.00
Dental Hygiene Lab/Insurance	\$50.00
Health Information Technology Insurance	\$8.00
Late Registration Fee	\$38.00
Nursing Lab/Insurance	\$50.00
Science Lab	\$20.00
International Student Health Insurance (F1 Visa only)	\$265.00

Tuition and Fees

Georgia Perimeter College students are responsible for tuition and fees which are set each year. Fees include student activity, athletic, parking, technology, and other special fees. Tuition and fees are due each semester at the time of registration. Registration is not complete until all fees are paid. Payment may be in cash, by check payable in U.S. currency, or with a Visa or Mastercard. The College

will withhold copies of transcripts and other student records and/or revoke the enrollment of students who owe the College money.

Fees and expenses are subject to change without notice.

Most fees are assessed for on-campus students only. Instruction delivered at Clarkston, Lawrenceville, Dunwoody, and Decatur is considered on-campus. Instruction at the Rockdale and Alpharetta Centers and other locations or by distance education is considered off-campus.

The precise amount of a student's fees for a semester depends upon a number of factors:

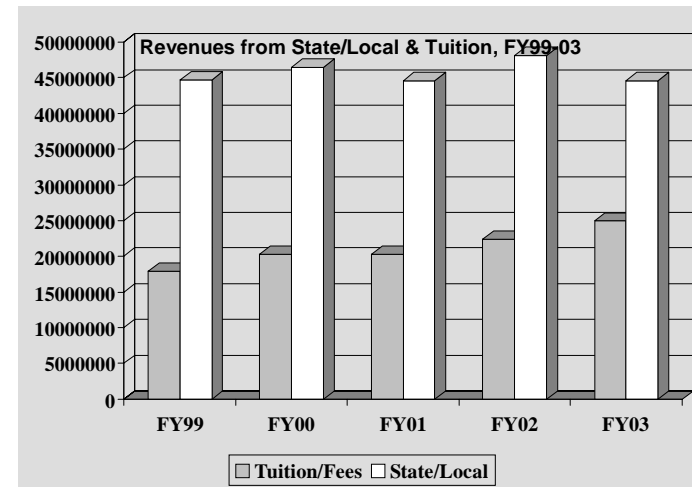
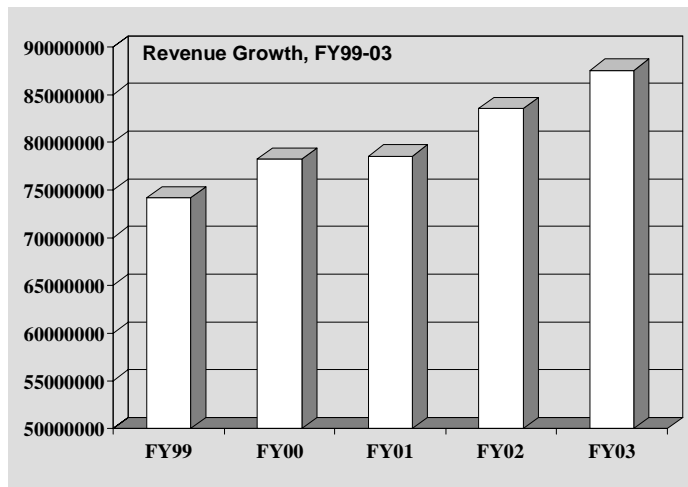
- The number of courses taken
- The nature of the courses
- The location at which the courses are taught
- The number of credit hours assigned to the courses
- The residence status of the student

It is the responsibility of the student to be informed of and observe all regulations and procedures regarding the payment of fees and the entitlement of refunds.

Revenues and Expenditure Per Student, FY 1999-2003

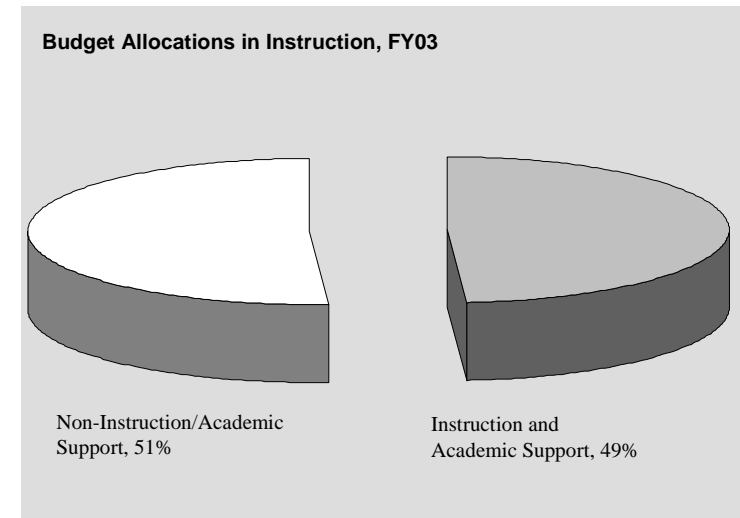
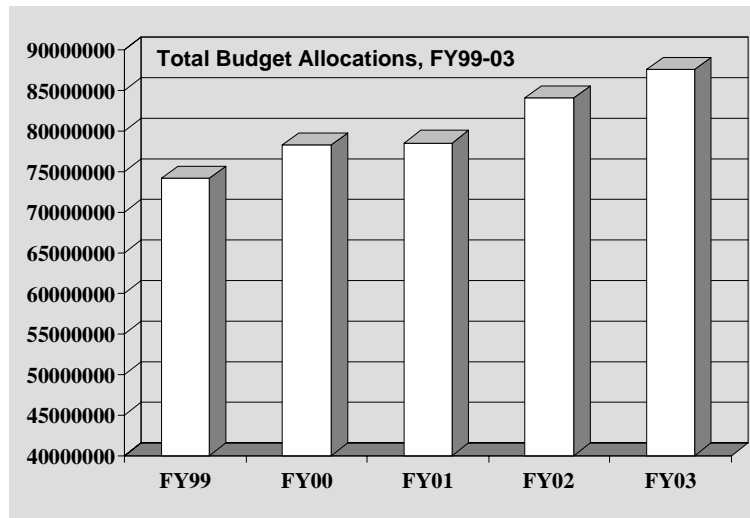
Revenues	FY99	FY00	FY01	FY02	FY03 Budget
Tuition and Fees	\$17,908,958	20,239,642	20,312,710	22,426,814	24,929,600
State/Local Appropriations	44,671,732	46,434,007	44,571,384	48,101,913	44,545,279
Other Income	348,563	120,461	479,789	272,121	564,809
Departmental Sales & Services	1,259,420	1,458,953	995,080	2,057,692	2,500,000
Sponsored Operations	10,015,886	9,981,371	12,215,133	10,689,716	15,000,000
Total Revenues	\$74,204,559	\$78,234,434	78,574,096	83,548,256	87,539,688

Expenditure Per Student	FY99	FY00	FY01	FY02	FY03 Budget
EFT Students	8,219	8,295	8,438	9,699	11,551
Expenditure per EFT Student (excluding sponsored)	\$7,819	\$8,177	\$7,864	\$7,513	\$6,280



Budget Allocations, FY 1999-2003

Allocations	FY99	FY00	FY01	FY02	FY03 Budget
Instruction	\$30,613,754	\$33,163,209	\$33,909,782	\$36,375,102	\$35,194,700
Public Service	202,819	84,004	84,337	87,752	92,228
Academic Support	6,721,191	7,031,388	7,308,239	7,244,549	7,835,077
Student Services	6,710,204	6,907,270	6,007,547	6,307,200	7,353,388
Institutional Support	12,826,233	13,935,643	12,144,366	13,149,522	13,921,997
Plant Operations	7,172,913	6,709,646	6,904,692	7,499,219	8,422,738
Departmental Sales & Services	NA	NA	NA	2,201,592	2,500,000
Sponsored Operations	9,889,774	10,399,888	12,155,452	10,689,716	15,000,000
Budget Reduction	NA	NA	NA	NA	(2,780,440)
Total Allocations	\$74,136,888	78,231,048	78,514,415	83,554,652	87,539,688



Library Collections, FY 1998-02

Library Collections	FY98	FY99	FY00	FY01	FY02
Holdings					
Paper Volumes	209,953	206,923	211,844	232,246	216,359
Paper Titles	156,165	158,993	158,125	179,449	157,666
Serial Subscriptions	1,073	1,070	2,032	1,681	1,303
Number of Microforms	33,780	35,000	36,511	38,073	34,618
Electronic Titles	351	500	NA	NA	NA
Expenditures					
Materials: Paper & Microforms	\$269,282	\$400,543	\$249,748	\$255,609	\$274,242
Current Serial: Paper & Microforms	\$132,833	\$91,631	\$155,647	\$154,263	\$155,647
Audio-Visual Materials	\$31,944	\$26,533	\$24,494	\$33,034	\$24,494
Circulation					
General Collection	97,318	63,930	69,472	47,214	54,278
Reserve Collection	16,793	8,888	NA	6,525	8,788
Interlibrary Loans					
To Other Libraries	1,374	522	764	724	943
From Other Libraries	275	183	179	184	320

Classrooms in Use by Campus, Day, and Hour, Fall 2002

Day & Hour	Clarkston (39 general rooms)		Dunwoody (50 general rooms)		Decatur (13 general rooms)		Lawrenceville (36 general rooms)		Rockdale (12 general rooms)	
	#	%	#	%	#	%	#	%	#	%
MWF										
8:00-8:50	26	67	35	70	9	69	27	75	9	75
9:00-9:50	33	85	42	84	12	92	30	83	10	83
10:00-10:50	38	97	38	76	12	92	33	92	10	83
11:00-11:50	37	95	45	90	12	92	33	92	10	83
12:00-13:35	20	51	32	64	3	23	21	58	5	42
13:40-15:25	27	69	37	74	6	46	23	64	3	25
15:30-17:10	14	36	23	46	2	15	24	67	1	8
17:20-19:00	28	72	40	80	10	77	24	67	10	83
19:10-20:50	24	62	38	76	6	46	27	75	11	92
20:55-22:40	3	8	8	16	3	23	19	53	5	42
TR										
8:00-9:15	22	56	20	40	12	92	24	67	7	58
9:25-10:40	34	87	42	84	13	100	30	83	9	75
10:55-12:10	34	87	45	90	13	100	32	89	8	67
12:20-13:35	33	85	44	88	12	92	25	69	9	75
13:40-15:25	31	79	38	76	1	8	27	75	3	25
15:30-17:10	12	31	20	40	0	0	25	69	1	8
17:20-19:00	33	85	39	78	10	77	23	64	12	100
19:10-20:50	30	77	31	62	7	54	25	69	12	100
20:55-22:40	6	15	6	12	1	8	16	44	3	25

Buildings, Improvement & Renovations, FY 02-03

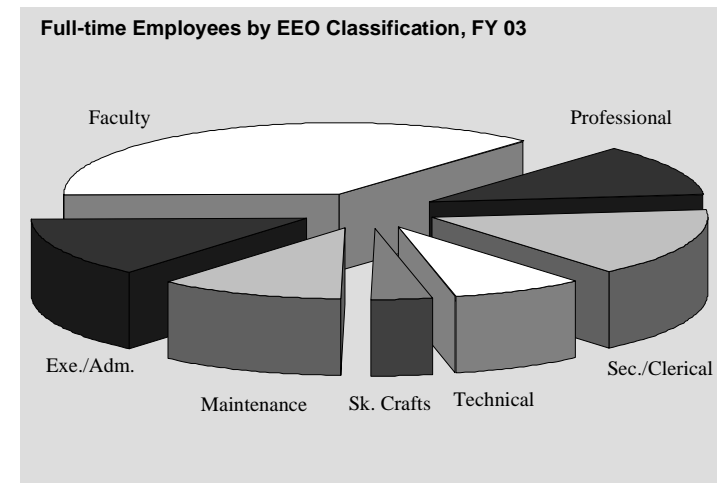
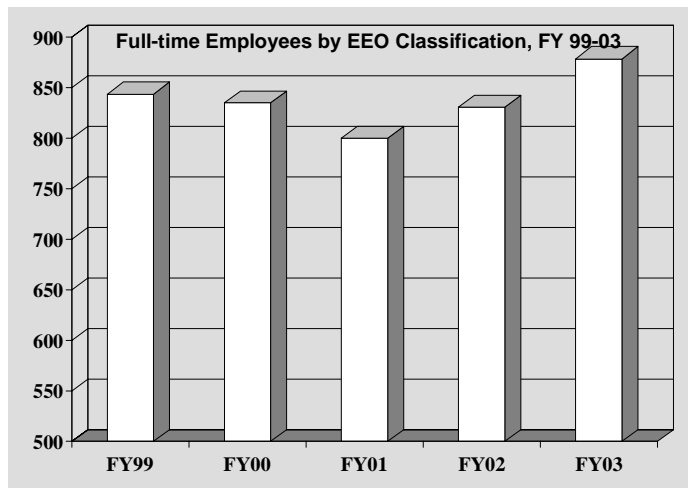
Campus	Building	Improvement & Renovation Projects	Improvement & Renovation Costs
Clarkston	CH	Nursing School Renovation	\$232,804
	CF	Smoke Hatch Replacement	\$33,000
	CL	Roofing Repairs & Exterior Waterproofing	\$154,438
	Campus	Transportation Enhancements*	\$169,650
	Campus	Backstops for Soccer Field	\$11,830
	LRC	Repair Building Chillers	\$11,360
	CM	Rework Storm Drain at Storage Building	\$10,431
	Decatur	SC	Chemistry & Biology Labs
Campus		Transportation Enhancement*	\$365,880
SB		Food Service & Book Store Renovation**	\$56,108
SA		Water Heater at Building SA	\$21,871
SC		Smoke Hatch Replacement	\$6,000
Dunwoody	NC	Dental Hygiene Clinic	\$148,697
	Campus	Transportation Enhancement*	\$279,740
	Various	Roofing Repairs Building NG, NK, NL & NM	\$15,194
		Relocation of Library Furniture	\$17,000
Lawrenceville	1GUC	Build-out of two Biology Labs and one Chemistry Lab	\$396,655
	1GUC	Install Security System at Gwinnett Classroom Building	\$10,601
	Campus	Concrete Stairway & Sidewalks Tie-ins	\$19,500
Rockdale	None		

Note: * Federal DOT Funds.
 ** Auxiliary Funds.

Employees

Full-Time Employees by EEO Classification, FY 1999-2003

EEO Category	1999	2000	2001	2002	2003
Executive/Administration/Managerial	104	102	110	115	119
Faculty	303	325	312	310	326
Professional Staff	94	88	83	92	101
Secretarial/Clerical	163	135	123	136	137
Technical/Paraprofessional	47	56	59	66	69
Skilled Crafts	32	31	25	27	31
Service Maintenance	101	98	88	85	96
Totals	844	835	800	831	879



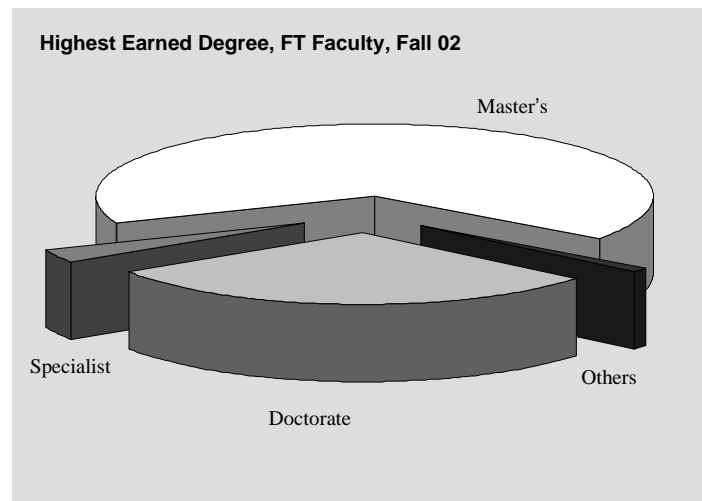
Corps of Instruction – All Campuses, Fall 2002

	Instructional Faculty	Library Faculty	Dept. Head/ Coor./Acad. Dir.	Deans Academic	Other Members of the Corps	Total
Rank						
Professor	30	0	2	3	2	37
Assoc. Professor	121	1	12	1	2	137
Asst. Professor	75	3	10	0	0	88
Instructor	100	9	1	0	0	110
Unranked	0	2	2	0	12	16
Gender						
Male	132	3	13	3	4	155
Female	194	12	14	1	12	233
Race						
Asian	14	0	0	0	1	15
Black	69	2	4	1	6	82
Hispanic	5	0	1	0	0	6
Native American	1	1	0	0	0	2
Multiracial	2	0	0	0	0	2
White	235	12	22	3	9	281
Tenure						
Tenured	192	0	10	2	3	207
On Track	68	0	10	2	0	80
Not Eligible*	66	15	7	0	13	101
Highest Degree						
Doctorate	101	2	14	4	8	129
Specialist	10	0	0	0	0	10
Master's	211	13	11	0	6	241
Bachelor's	4	0	2	0	2	8
Total	326	15	27	4	16	388

*Not eligible/not on track

Highest Earned Degree, Full-Time Instructional Faculty, Fall 2002

Academic Area	Doctorate	Specialist	Master's	Others	Total
Business Administration	2	0	22	0	24
Fine Arts	1	1	8	0	10
Foreign Language	2	0	14	0	16
Health Sciences/Physical Education	4	2	27	1	34
Humanities/Honors	27	0	59	0	86
Math/Computer Science	8	5	46	1	60
Science	24	1	14	0	39
Social Sciences	25	1	15	0	41
Interpreter Training	0	0	0	2	2
Unclassified	4	0	10	0	14
Total	97	10	215	4	326
% of FT Faculty	29.8%	3.1%	65.9%	1.2%	100.0%

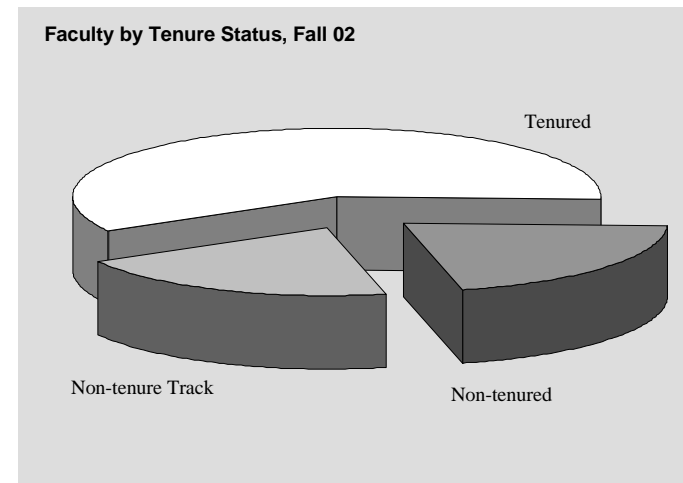
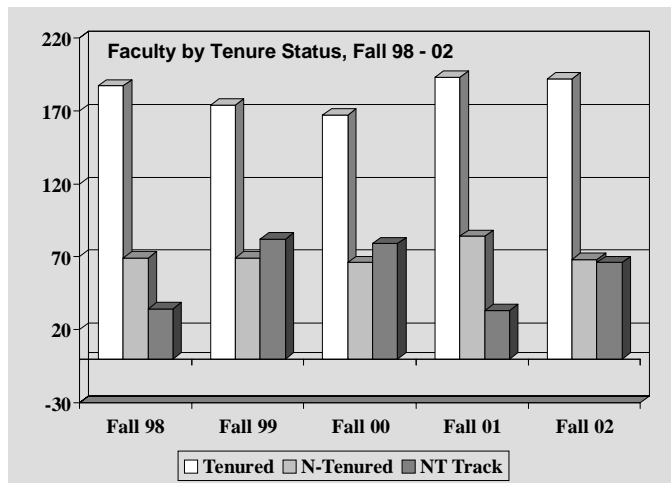


Faculty Distribution by Rank and Race, Fall 1998-02

Academic Rank	Fall 98		Fall 99		Fall 00		Fall 01		Fall 02	
Professor	20	7%	15	5%	18	6%	21	7%	30	10%
Asian	0	0%	0	0%	0	0%	0	0%	1	3%
Black	0	0%	0	0%	0	0%	1	5%	4	14%
Hispanic	0	0%	0	0%	0	0%	0	0%	1	3%
Native American	0	0%	0	0%	0	0%	0	0%	0	0%
White	20	100%	15	100%	18	100%	20	95%	24	80%
Associate Professor	78	27%	73	22%	67	22%	106	34%	121	37%
Asian	3	4%	3	4%	3	5%	4	4%	5	4%
Black	11	14%	10	14%	9	13%	13	12%	20	16%
Hispanic	3	4%	3	4%	3	5%	2	2%	1	1%
Native American	0	0%	1	1%	1	2%	1	1%	1	1%
White	61	78%	56	77%	51	76%	86	81%	94	78%
Assistant Professor	149	51%	147	45%	141	45%	109	35%	75	23%
Asian	5	3%	5	3%	5	4%	6	6%	4	5%
Black	31	21%	30	20%	29	21%	26	24%	17	23%
Hispanic	1	1%	1	1%	1	1%	3	3%	2	3%
Native American	0	0%	0	0%	0	0%	0	0%	0	0%
White	112	75%	111	76%	106	75%	75	69%	52	69%
Instructor	42	14%	86	26%	86	28%	72	23%	50	15%
Asian	2	5%	6	7%	5	6%	3	4%	2	4%
Black	10	24%	24	28%	21	24%	20	28%	11	22%
Hispanic	2	5%	2	2%	1	1%	1	1%	0	0%
Native American	0	0%	0	0%	0	0%	1	1%	1	2%
Multiracial	NA	NA	NA	NA	1	1%	1	1%	1	2%
White	28	67%	53	62%	58	67%	46	64%	35	70%
Unranked	1	0%	4	1%	NA	NA	2	1%	0	0%
Asian	0	0%	0	0%	NA	NA	0	0%	0	0%
Black	1	100%	0	0%	NA	NA	0	0%	0	0%
Hispanic	0	0%	0	0%	NA	NA	0	0%	0	0%
Native American	0	0%	0	0%	NA	NA	0	0%	0	0%
White	0	0%	4	100%	NA	NA	2	100%	0	0%
Temporary*	NA	NA	NA	NA	NA	NA	17	6%	50	15%
Asian	NA	NA	NA	NA	NA	NA	0	0%	2	4%
Black	NA	NA	NA	NA	NA	NA	6	35%	17	34%
Hispanic	NA	NA	NA	NA	NA	NA	0	0%	1	2%
White	NA	NA	NA	NA	NA	NA	11	65%	30	60%
Total	290	100%	325	100%	312	100%	310	100%	326	100%

Faculty Distribution by Tenure Status, Fall 1998-02

Year	Tenured		Non-Tenured		Non-Tenure Track		Total
	#	%	#	%	#	%	#
Fall 98	187	64	69	24	34	12	290
Fall 99	174	54	69	21	82	25	325
Fall 00	167	54	66	21	79	25	312
Fall 01	193	62	84	27	33	11	310
Fall 02	192	59	68	21	66	20	326

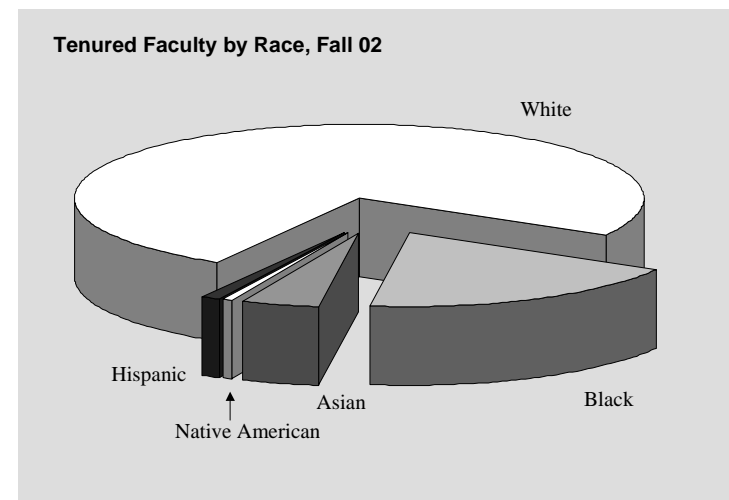
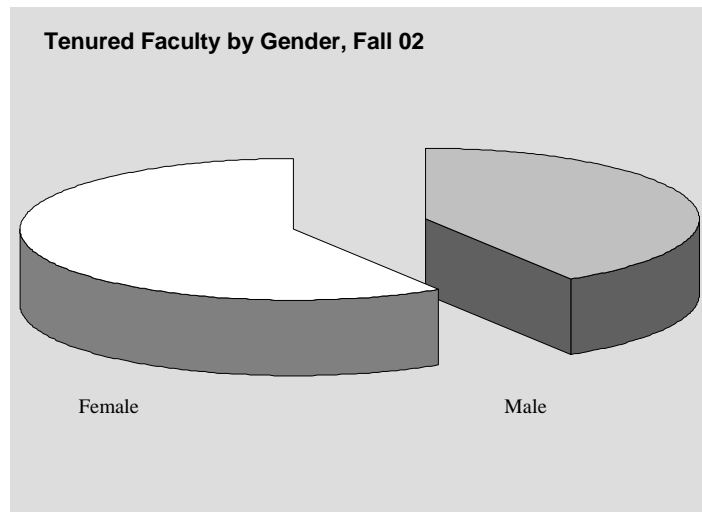


Tenure Status by Academic Area, Gender, & Race, Fall 2002

Academic	Tenured	Non-Tenured	NT Track	Total
Business	15	3	6	24
Fine Arts	7	3	0	10
Foreign Languages	5	4	7	16
Health Sci./Phys. Ed.	18	6	10	34
Humanities/Honor	55	18	13	86
Math/CS/ENGR	36	14	10	60
Science	24	6	9	39
Social Sciences	23	13	5	41
Interpreter Training	0	0	2	2
Unclassified	9	1	4	14
Total	192	68	66	326

Gender	Tenured	Non-Tenured	NT Track	Total
Male	79	27	26	132
Female	113	41	40	194
Total	192	68	66	326

Race	Tenured	Non-Tenured	NT Track	Total
Black	36	13	20	69
Asian	9	2	3	14
Native American	1	0	1	2
Hispanic	2	2	1	5
White	144	50	41	235
Multiracial	0	1	0	1
Total	192	68	66	326



Faculty Workload by Area, Fall 2001 vs 2002; by Campus, Fall 2002

Area	Sections Taught		Students Taught		FTF Classes	PTF Classes	Average Class Size		Part-time %	
	Fall 01	Fall 02	Fall 01	Fall 02	Fall 02	Fall 02	Fall 01	Fall 02	Fall 01	Fall 02
Business	186	220	4,763	5,844	106	114	26	27	46.2%	51.8%
Dental Hygiene	8	8	188	188	7	1	24	24	12.5%	12.5%
ENSL & Foreign Languages	130	180	2,394	3,156	99	81	18	18	44.6%	45.0%
Fine Arts	70	81	1,367	1,605	39	42	20	20	57.1%	51.9%
Fire Science	2	3	23	38	1	2	12	13	50.0%	66.7%
Higher Ed. Seminars	19	28	402	540	12	16	21	19	52.6%	57.1%
Humanities	631	702	13,093	14,526	401	301	21	21	47.2%	42.9%
Interpreter Training	19	21	193	188	9	12	10	9	52.6%	57.1%
Mathematics & Computer Science	368	460	9,423	11,179	287	173	26	24	32.6%	37.6%
Nursing	6	11	413	326	11	0	69	30	0.0%	0.0%
Others	0	1	0	15	1	0	0	15	0.0%	0.0%
Physical Education	113	131	2,374	2,776	73	58	21	21	38.9%	44.3%
Science	286	363	6,434	8,003	207	156	22	22	43.4%	43.0%
Social Sciences	311	386	9,142	11,617	217	169	29	30	38.9%	43.8%
College Total	2,149	2,595	50,209	60,001	1,470	1,125	23	23	42.5%	43.4%

Campus	Sections Taught Fall 02	Students Taught Fall 02	FTF Classes Fall 02	PTF Classes Fall 02	Average Class Size, Fall 02	Part-time % Fall 02
Clarkston	703	15,682	453	250	22	35.6%
Decatur	204	4,491	132	72	22	35.3%
Dunwoody	812	18,879	481	331	23	40.8%
Lawrenceville	719	17,389	334	385	24	53.5%
Rockdale	157	3,560	70	87	23	55.4%

Quick References for GPC

Quick Reference I for Georgia Perimeter College

Number of Students On & Off Campus, Fall 2002

Total Headcount (Unduplicated)	17,573
Headcount by Gender: Male	6,617
Female	10,956
Headcount by Race: Asian	1,677
Black	5,886
Hispanic	648
Multiracial	848
Native American	42
White	8,452
Headcount by Campus: Clarkston	5,207
Decatur	1,662
Dunwoody/Alpharetta	5,928
Lawrenceville	4,933
Rockdale	1,179
Off campus/Distance Education	1,961
Equivalent Full-Time	11,551
Total Cont. & Corp. Ed. Participants	5,511

Degrees Awarded FY 2002

Total Awarded	992
Associate of Arts	91
Associate of Science	789
Associate of Applied Science	20
Certificate & Career Program	4
Career Program	88

Degrees by Campus

Clarkston	292
Lawrenceville	246
Dunwoody	336
Decatur/Rockdale	118

Degrees by Race

Asian	84
Black	241
Hispanic	37
Multiracial	27
Native American	4
White	599

Enrollment by County Fall 2002

Cherokee	61
Clarke	25
Clayton	324
Cobb	617
DeKalb	3,953
Douglas	62
Fayette	30
Forsyth	141
Fulton	2,213
Gwinnett	4,555
Henry	128
Newton	303
Rockdale	640
Walton	251
Others in-State	389
Out-of-State	3,881

Tuition & Fees FY 2002-03

Tuition (per hour)	
In-State	\$56.00
Out-of-State	\$222.00

Required Fees	
Application (one time only)	\$20.00
Parking	\$15.00
Student Activity (except Rockdale)	\$42.00
Student Activity (Rockdale)	\$20.00
Student Athletic	\$27.00
Technology	\$38.00

Special Fees	
Applied Music	\$75.00
College by TV (Tele Course)	\$50.00
Dental Hygiene Insurance	\$50.00
Health Info Tech Insurance	\$8.00
Late Payment	\$38.00
Nursing Insurance/Test	\$50.00
Science Lab	\$20.00
Int'l Student Health Insurance	\$265.00

Full-Time Employees FY 2003

Executive/Adm./Managerial	119
Faculty	326
Professional Staff	101
Secretarial/Clerical	137
Technical/Paraprofessional	69
Skilled Crafts	31
Service Maintenance	96
Totals	879

Quick Reference II for Georgia Perimeter College

Revenue & Expenditure FY 02		Corps of Instruction, Fall 02		Georgia Population Projection 00 - 25							
				White	Black	Native Am	Asia	Total			
Revenues		By Rank		00	69%	29%	0.2%	2.0%	7,874,792		
Tuition and Fees	\$22,426,814	Professor	37	05	68%	30%	0.2%	2.0%	8,412,686		
State/Local Appropriation	\$48,101,913	Associate Professor	137	10	67%	31%	0.2%	2.1%	8,823,902		
Other Income	\$272,121	Assistant Professor	88	15	66%	32%	0.2%	2.2%	9,199,751		
Departmental Sales & Services	\$2,057,692	Instructor	110	20	65%	33%	0.2%	2.4%	9,551,672		
Sponsored Operations	\$10,689,716	Unranked	16	25	64%	34%	0.2%	2.5%	9,869,427		
TOTAL REVENUE	\$83,548,256	By Gender		Population of Counties in the GPC Service Region 2000							
Budget Allocations		Male	155	Cherokee	141,903						
Instruction	\$36,375,102	Female	233	Clarke	101,489						
Public Services	\$87,752	By Race		Clayton	236,517						
Academic Support	\$7,244,549	Asian	15	Cobb	607,751						
Student Services	\$6,307,200	Black	82	DeKalb	665,865						
Institutional Support	\$13,149,522	Hispanic	6	Douglas	92,174						
Plant Operations	\$7,499,219	Native American	2	Fayette	91,263						
Departmental Sales & Services	\$2,201,592	Multiracial	2	Forsyth	98,407						
Sponsored Operations	\$10,689,716	White	281	Fulton	816,006						
TOTAL ALLOCATIONS	\$83,554,652	By Highest Degree		Gwinnett	588,448						
Expenditure Per Student		Doctorate	129	Henry	119,341						
EFT Student	9,699	Specialist	10	Newton	62,001						
Expenditure Per EFT Student (excluding sponsored)	\$7,513	Master's	241	Rockdale	70,111						
		Bachelor's	8	Walton	60,687						
		By Tenure		Total Population of the Region 3,751,963							
		Tenured	207								
		On Track	8								
		Not Eligible/Not On Track	101								
		Total	388								
		Note: Corps of instruction includes 62 people of Executive/Admin./Managerial group and 326 faculty members.									

Sources: 1. Selig Center, University of Georgia, *Projected Population by Race, Georgia, 1995-2025*
 2. University of Georgia, *The Georgia County Guide*.

A Directory for Georgia Perimeter College

GPC District Offices

VP Educational Affairs	404-244-2371
Accounting	404-244-2269
Admissions and Records	404-299-4564
Alumni Relations	404-244-5704
Athletics	770-551-3128
Continuing and Corporate Education	404-294-3593
Disability Services	404-299-4038
Distance Learning	404-294-3494
Financial Aid	404-299-4006
Human Resources	404-244-5934
ID Card Services	404-294-3597
International Center	404-298-4830
Institutional Research and Planning	404-244-2261
Public Relations	404-244-2265
Recruitment and Retention	404-299-4078
Student Accounts	404-244-5020

GPC Campus Offices

Clarkston	
Registrar and Admissions	404-299-4035
Financial Aid	404-299-4006
Student Accounts	404-299-4030

GPC Campus Offices

Decatur	
Registrar and Admissions	404-244-5036
Student Accounts	404-244-5020
Financial Aid	404-244-2983
Dunwoody/Alpharetta	
Registrar and Admissions	770-551-3010
Student Accounts	770-551-3023
Financial Aid	770-551-7287
Lawrenceville	
Registrar and Admissions	678-407-5315
Student Accounts	678-407-5137
Financial Aid	678-407-5134
Rockdale	
Advising and Counseling	770-785-6970
Student Accounts	770-785-6990