

# Georgia Perimeter College



**2006-2007 FACTBOOK**



# Georgia Perimeter College



## 2006-2007 FACTBOOK

The Office of Institutional Research & Planning  
3251 Panthersville Road, Decatur, GA 30034  
Phone: 678-891-2570 Fax: 678-891-2570  
May 2008

Electronic format available at  
<http://www.gpc.edu/~gpcoirp/>



# Preface

---

The 2006-2007 edition of *The Georgia Perimeter College Fact Book* provides a comprehensive statistical portrait of Georgia Perimeter College (GPC). This book presents a wide array of information and data in many areas including enrollment, human resources, college finances, and other aspects of Georgia Perimeter College and its constituent locations: Clarkston Campus, Decatur Campus, Dunwoody Campus, Lawrenceville Campus, Newton Campus and the Alpharetta site.

All enrollment information is based on fall 2006 data. All administrative, academic information and organizational charts reflect the most recent changes and are effective as of press time. All fiscal year data are collected as of June 30, 2006. The definitions and guidelines used in this book are consistent with the Integrated Post-secondary Education Data System (IPEDS) and policies of the Board of Regents of the University System of Georgia.

The *Georgia Perimeter College Fact Book 2006-2007* is a publication of the Office of Institutional Research and Planning (OIRP). It is also a product of cooperative efforts of the many offices and campuses of GPC. The GPC Office of Marketing and Public Relations and the OIRP staff worked carefully to produce the data and present it lucidly. Their efforts are gratefully appreciated.

The electronic version of the fact book is accessible to the public on the World Wide Web via Georgia Perimeter College's home page at [www.gpc.edu](http://www.gpc.edu) or directly at [www.gpc.edu/~oirp](http://www.gpc.edu/~oirp). Inquiries and comments concerning this document are always welcomed and may be directed to the Office of Institutional Research and Planning: 3251 Panthersville Road, Decatur, GA 30034; Phone: 678-891-2570; Fax: 678-891-2868; E-mail: [jbyrd@gpc.edu](mailto:jbyrd@gpc.edu).

## **Godfrey Fuji Noe, Ph.D, MA, Director, Office of Institutional Research and Planning**

Patricia L. Gregg, Ph.D, Associate Director, Institutional Effectiveness, Office of Institutional Research and Planning

Janna Kelley, Data Manager, Office of Institutional Research and Planning

Kimberly Poag, Information Analyst I, Office of Institutional Research and Planning

Thuy Dao, Information Analyst I, Office of Institutional Research and Planning

Felisha Shepard-White, MA, Research Associate, Institutional Effectiveness, Office of Institutional Research and Planning

Janice W. Byrd, Staff Assistant, Office of Institutional Research and Planning

# President's Message

---

As I enter the second year of my presidency, I am pleased to present the Georgia Perimeter College Fact Book 2006-2007. The past year saw a number of significant organizational changes at Georgia Perimeter College. Through the collaborative efforts of our faculty and staff, we have a record-setting enrollment in fall 2007 of 21,473. This dramatic growth has occurred even as we transition the Lawrenceville Campus to Georgia Gwinnett College. We remain the third largest institution within the University System of Georgia, serving students at multiple locations throughout metro Atlanta. Our enrollment is characterized by a diverse population, representing more than 140 countries. The college teaches more new undergraduate students each fall semester than any other USG institution, accepts more transfer students and sends more students on to other institutions.

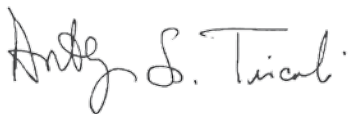
The statistics in this volume provide an overview of Georgia Perimeter College and its academic programs, students, faculty and services. We continue to meet the needs of a growing Georgia by serving an increasingly diverse student body, awarding 6,685 degrees since 2000. We proudly opened The College Center at the Clarkston Campus in January 2007, bringing all student services under one roof and providing a unique gathering space for students, faculty and staff. The Newton Campus opened its doors in May 2007, bringing higher education opportunities to a segment of the Georgia population that has long been underserved. A new parking deck is open at the Dunwoody Campus. Over the next five years, we plan to expand facilities at the Decatur, Dunwoody, Clarkston, Newton and North Fulton locations.

Throughout the past year, we initiated a number of changes, all designed to enable GPC to be more responsive to the needs of our students and our communities. We streamlined our organizational structure so that we function more effectively as one college. We instituted a guaranteed admission plan, making it easier for recent high school graduates to enroll. We also developed Transfer Admission Guarantees (TAGs), to pave the way for GPC graduates to continue on to the senior institution of their choice. Currently, GPC has TAG agreements with 22 public and private universities throughout Georgia, as well with specialized agreements for honors students and engineering students. To ensure that we continue to move in the right direction, we embarked upon the Voices, Values and Visions process, seeking input from students, faculty, staff and community leaders. The process yielded a new Vision and Mission for GPC, along with goals and key performance indicators to guide us over the next three years.

Our spring 2007 graduation demonstrated our continuing focus on student success. Foregoing the traditional commencement speech, we heard from five GPC graduates of diverse backgrounds, whose inspiring stories served as a powerful reminder of why we're all here.

The coming year will emphasize improving our processes and services, while maintaining our commitment to teaching excellence. I sincerely thank all the dedicated educators and community leaders I have come to know over the past year, and look forward to all the new partnerships on the horizon.

Sincerely,



**Dr. Anthony S. Tricoli**  
President, Georgia Perimeter College



# Table of Contents

Preface	i	Enrollment of GPC Clarkston, Fall 01-06	30
President's Message	ii	Enrollment of GPC Clarkston, Fall 01-06 (Continued)	31
Table of Contents	iii	Enrollment of GPC Decatur, Fall 01-06	32
		Enrollment of GPC Decatur, Fall 01-06 (Continued)	33
<b>ORGANIZATION</b>	<b>1</b>	Enrollment of GPC Dunwoody, Fall 01-06	34
Mission Statement	3	Enrollment of GPC Dunwoody, Fall 01-06 (Continued)	35
History	4	Enrollment of GPC Lawrenceville, Fall 01-06	36
Board of Regents	6	Enrollment of GPC Lawrenceville, Fall 01-06	
Chief Executive Officer, Vice Presidents	7	(Continued)	37
Administrative Organizational Chart	8	Enrollment of GPC Newton, Fall 01-06	38
Financial and Administrative Affairs Team	9	Enrollment of GPC Newton, Fall 01-06 (Continued)	39
Academic and Student Affairs Team	10	Enrollment of GPC Off Campus/Distance	
Advancement & External Affairs Team	11	Education, Fall 01-06	40
Geographic Locations of the GPC Campus	12	Enrollment of GPC Off Campus/Distance	
Maps of Alpharetta Center & Clarkston Campus	13	Education, Fall 02-06 (Continued)	41
Maps of Decatur & Dunwoody Campuses	14	Enrollment by Age Group, Fall 2002-2006;	
Maps of Lawrenceville Campus & Newton Campus	15	and by County, Fall 2005	42
<b>ACADEMICS</b>	<b>16</b>	High Schools Attended by 100 or More, Fall 2006	43
Academic Programs Offered, FY 2007	18	International Student Enrollment I, Fall 2003-2006	45
Degrees Awarded Summary, FY 2001-2006	19	International Student Enrollment II, Fall (continued)	46
Degrees Awarded by Campus, FY 2006	20	Retention, Graduation & Transfer Rates, Fall 2003 Cohort	47
Degrees Awarded by Ethnicity and Gender, FY 2006	21	Retention rates, Fall 2004 Cohort	48
Degrees Awarded by Major, FY 2006	22	Retention Rate, Fall 2005; Enrollment by	
Students Taught by Program by Campus, Fall 2006	23	Class Size FY 01-07	49
Continuing and Corporate Education Fall 2002-2006	24	Retention, Graduation & Transfer Rates, Fall 2003 Cohort	47
		Retention rates, Fall 2004 Cohort	48
		Retention Rate, Fall 2005; Enrollment by	
<b>STUDENTS</b>	<b>26</b>	Class Size FY 01-07	49
Enrollment Summary I – All Campuses, Fall 01-06	28	Student Financial Aid Awarded by Source, FY 03-07	50
Enrollment Summary II – All Campuses, Fall 01-06	29		

## Table of Contents (Continued)

---

Entering Freshman SAT, Fall 02-06; Regents' Test, Spring 07	51	<b>FUNDING AND FACILITIES</b>	<b>66</b>
Applications Received, Fall 2002-2006		Student Tuition and Fees, FY 2008	68
Testing Activities, Fall 2002-2006	52	Revenues and Expenditures Per Student, FY 2003-2007	69
Semester Credit Hour Report, GPC & USG FY 05-07	53	Budget Allocations, FY 2003-2007	70
Comparison with Other USG Two-Year Colleges, Fall 2006	54	Library Collections, FY 2001-2006	71
Athletics, FY 2006 – 07	55	Buildings, Improvement & Renovations, FY 2007	72
Retention & Graduation Rates for Athletes on Scholarships Fall 03 Cohort	56	<b>EMPLOYEES</b>	<b>73</b>
Retention & Graduation Rates for Athletes on Scholarships Fall 03 Cohort (Continued)	57	Full-Time Employees by EEO Classification	75
Retention & Graduation Rates for Athletes on Scholarships Fall 03 Cohort (Continued)	58	Corps of Instruction-All Campuses, Fall 2006	76
Retention & Graduation Rates for Athletes on Scholarships Fall 04 Cohort	59	Highest Earned Degree, Full-Time Instructional Faculty, Fall 2006	77
Retention & Graduation Rates for Athletes on Scholarships Fall 04 Cohort (Continued)	60	Faculty Distribution by Rank and Ethnicity Fall 2002-06	78
Retention & Graduation Rates for Athletes on Scholarships Fall 04 Cohort (Continued)	61	Faculty Distribution by Tenure Status, Fall 2002-06	80
Retention & Graduation Rates for Athletes on Scholarships Fall 05 Cohort	62	Tenure Status by Academic Area, Gender, & Ethnicity, Fall 2006	81
Retention & Graduation Rates for Athletes on Scholarships Fall 05 Cohort (Continued)	63	Faculty Workload by Area, Fall 2005 & 2006; By Campus, Fall 2006	82
Retention & Graduation Rates for Athletes on Scholarship Fall 05 Cohort (Continued)	64	<b>QUICK REFERENCES FOR GPC</b>	<b>83</b>
Students with Disabilities, from 01-06	65	Quick Reference I for Georgia Perimeter College	85
		Quick Reference II for Georgia Perimeter College	86
		A Directory for Georgia Perimeter College	87

# Georgia Perimeter College



## 2006-2007 FACTBOOK

Organization

Academics

Students

Funding & Facilities

Employees



## Mission Statement

---

Georgia Perimeter College transforms the lives of our students to thrive in a global society.

As a diverse, multi-campus two-year college, we provide relevant, responsive, learner-centered higher education that facilitates the achievement of academic, professional, and personal goals.

We embrace excellence, teamwork, and quality service that link the college's human capital with our communities to enhance economic, social, and cultural vitality.

As a key point of entry for students into higher education in Georgia and as the major provider of associate degrees and student transfer opportunities, Georgia Perimeter College supports the Strategic Plan of the University System of Georgia.

# History

---

Founded by the citizens of DeKalb County and the DeKalb Board of Education under the Junior College Act of 1958, Georgia Perimeter College opened as DeKalb College with its Clarkston Campus in 1964. It was the only public junior college in the state supported and controlled by a local board of education. It was established in order that any resident of the DeKalb School District who held a high school diploma or its equivalent and who desired to seek two years of postsecondary education might have the opportunity to do so.

The college's Decatur (formerly known as South) Campus opened in 1972. Also beginning in 1972, students enrolled in DeKalb Area Technical School were able to enroll dually in vocational and collegiate programs, and the college was designated DeKalb Community College. As growth continued both for DeKalb County and the college, the Dunwoody (formerly North) Campus was added and began operation in 1979. DeKalb College pioneered in Georgia in open-door admissions, personalized approaches to instruction, and community-related curricula and activities.

In 1985, DeKalb Vocational-Technical School was placed under the governance of a new state-wide board for

vocational-technical schools with daily operations remaining under the control of the DeKalb County School System. Students enrolled in specific Associate in Applied Science degree programs continued, however, to enroll dually in the college and technical school, now known as DeKalb Technical College.

In 1986, when DeKalb County relinquished its support, DeKalb College was accepted by the Board of Regents of the University System of Georgia as the thirty-fourth member institution.

During spring 1993, DeKalb College, in cooperation with Clayton State College, DeKalb Technical College and Newton County Public Schools, formed the Newton Center for Higher Education, which offered both credit and non-credit courses.

In November 1997, the Board of Regents of the University System of Georgia approved changing the name of the college from DeKalb College to Georgia Perimeter College to reflect its expanding mission and its service throughout the metro Atlanta area. As part of changing the college's name, the names of the campuses were changed to identify the cities or counties in which they are located.

## History (continued)

---

In December 2001, Georgia Perimeter College's Lawrenceville Campus, along with its partners at the Gwinnett University Center, relocated from its humble beginnings at the MacCleod Industrial Park on Sugarloaf Parkway to its current 177-acre campus at 1000 University Center Lane. In 2007, Georgia Perimeter College transitioned the Lawrenceville site to become Georgia Gwinnett College, a new four year USG institution. In summer 2007, the Rockdale campus was relocated to a larger new campus in Newton County.

The college's academic offerings correspond with curricular content and requirements of the University System of Georgia. Georgia Perimeter College also serves as a community cultural center for the performing arts in music and drama. Curricula feature transfer, learning support, career, continuing and distance education programs as well as joint educational offerings with other system institutions and state-supported technical institutions. Associate degrees are awarded to graduates who complete the two-year transfer and career programs.

Source: [www.gpc.edu/News\\_and\\_Information/mission.php3#history](http://www.gpc.edu/News_and_Information/mission.php3#history)

# Board of Regents

---

The Board of Regents (BOR) of the University System of Georgia (USG) is composed of 16 members appointed by the Governor and confirmed by the Senate for seven-year terms. One member is appointed from each of the 11 congressional districts, and five are appointed from the state at large. The BOR exercises broad jurisdiction over all institutions of USG and establishes policies and procedures under which they operate. The BOR receives all state appropriations for the USG and allocates these appropriations to the institutions and institution-related agencies. While the BOR engages in both policy-making and administrative functions, each unit of the System has a high degree of academic and administrative autonomy.

The System currently includes 35 institutions: four research universities, two regional universities, 13 state universities, 7 state colleges, 9 two-year colleges and one independent research unit. These institutions are both distinctive and interrelated. They are geographically dispersed so that approximately 96 percent of the people in Georgia reside within 35 miles of at least one university or college.

## Members and Terms of the BOR

- **Bernard, Kenneth R.**  
(01/01/07-01/01/14)
- **Bishop, James A.**  
(10/04/01-01/01/09)
- **Carter, Hugh A., Jr.**  
(01/01/07-01/01/11)
- **Cleveland, William H. (Vice Chair)**  
(10/04/01-01/01/09)
- **Hatcher, Robert F.**  
(01/06/06-01/01/13)

- **Jenkins, Felton**  
(01/06/06-01/01/13)
- **Jennings, W. Mansfield, Jr.**  
(01/06/06-01/01/13)
- **Jolly, James R.**  
(02/13/01-01/01/08)
- **Leebern, Donald M., Jr.**  
(01/01/98-01/01/12)
- **McMillan, Elridge W.**  
(01/01/03-01/01/10)
- **Pittard, Patrick S.**  
(05/20/03-01/10/08)
- **Poitevint, Doreen S.**  
(01/13/04-01/13/11)
- **Potts, Willis J.**  
(03/07/06-01/01/13)
- **Tarbutton, Benjamin J.**  
(01/06/06-01/01/13)
- **Tucker, Richard L.**  
(01/28/05-01/01/12)
- **Vigil, Allan (Chair)**  
(08/06/03-01/01/10)

## Chancellor of the USG

- **Erroll B. Davis Jr.**

# Chief Executive Officer, Vice Presidents

---

## Chief Executive Officer

The president of Georgia Perimeter College is the chief executive and administrative officer. The president is appointed by the Board of Regents and is directly responsible to the BOR for the conduct of the institution, the development of institutional goals, the formulation of policies, and the overall well being of the college.

## The President of GPC

Dr. Anthony S. Tricoli  
(6<sup>th</sup> president)

## The Past Presidents of GPC

- Thad W. Hollingsworth  
(1963-1967)
- James H. Hinson, Jr.  
(1967-1977)
- W. Wayne Scott  
(1977-1982)
- Marvin Cole  
(1982-1994)
- Jacquelyn M. Belcher, J.D.  
(1995-2005)



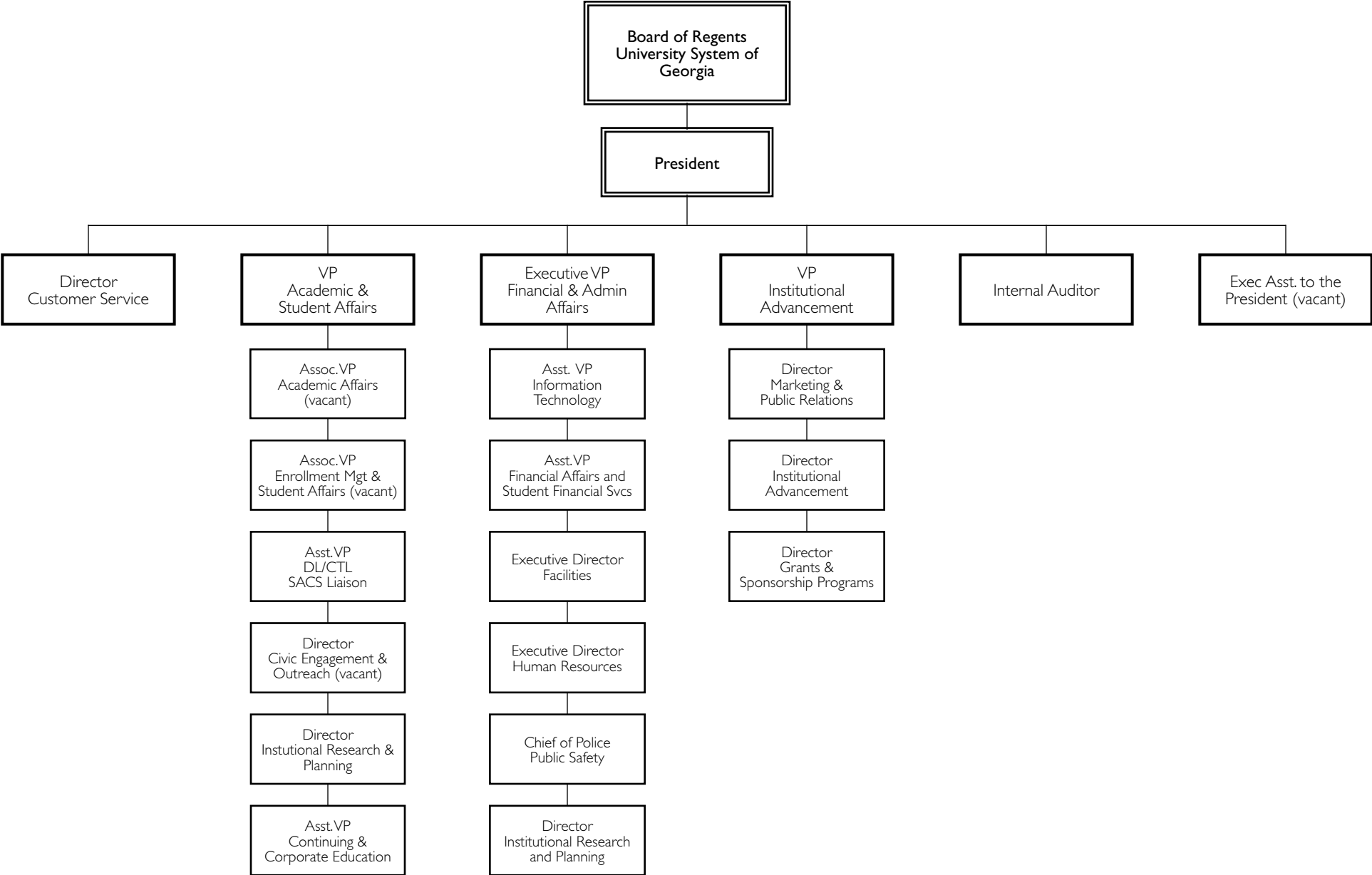
## Vice Presidents

Ronald L. Carruth, Executive VP,  
Financial & Administrative  
Affairs

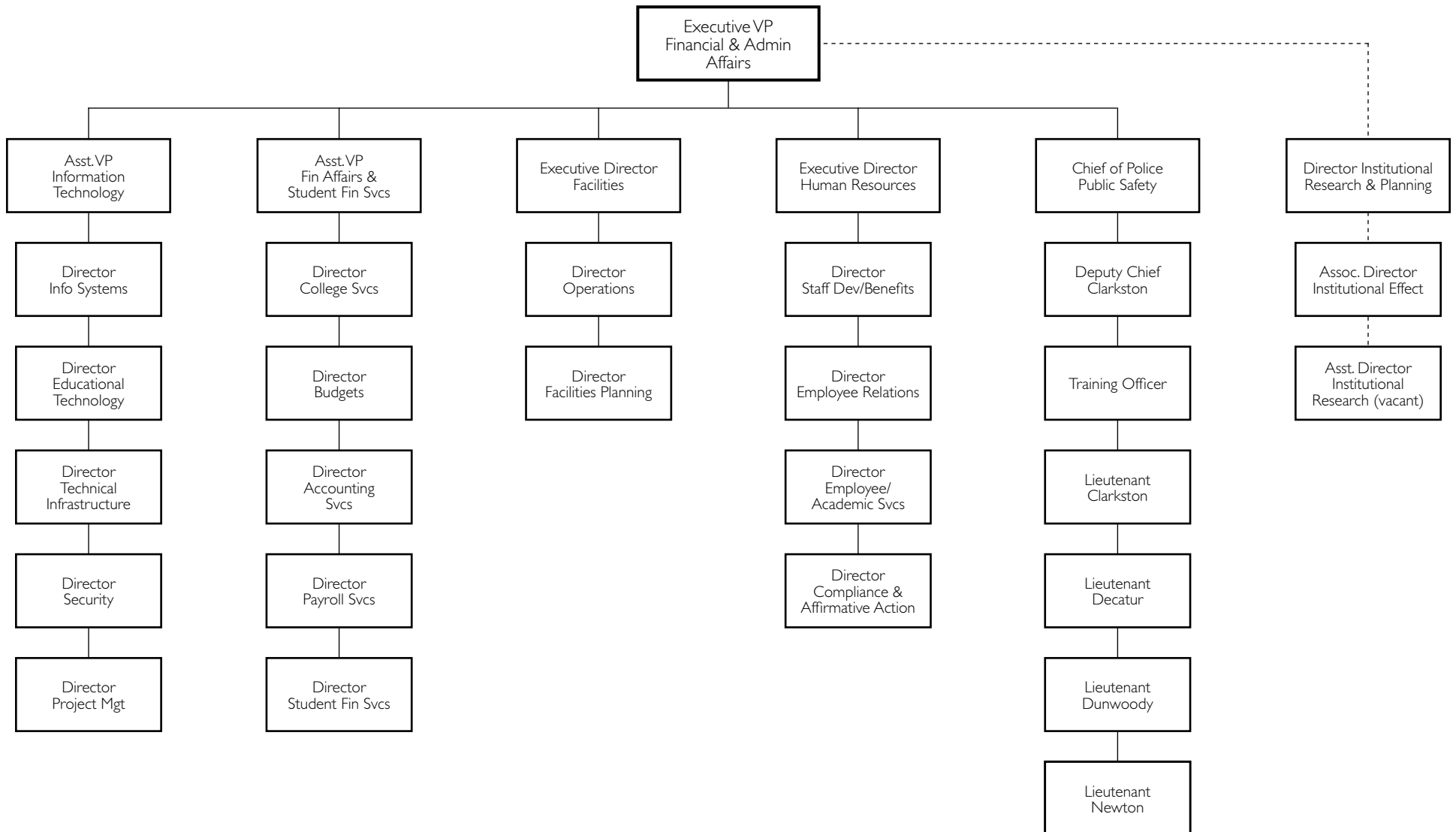
Virginia Michelich, Ph.D., VP,  
Educational Affairs

Jeff Tarnowski, VP, Institutional  
Advancement

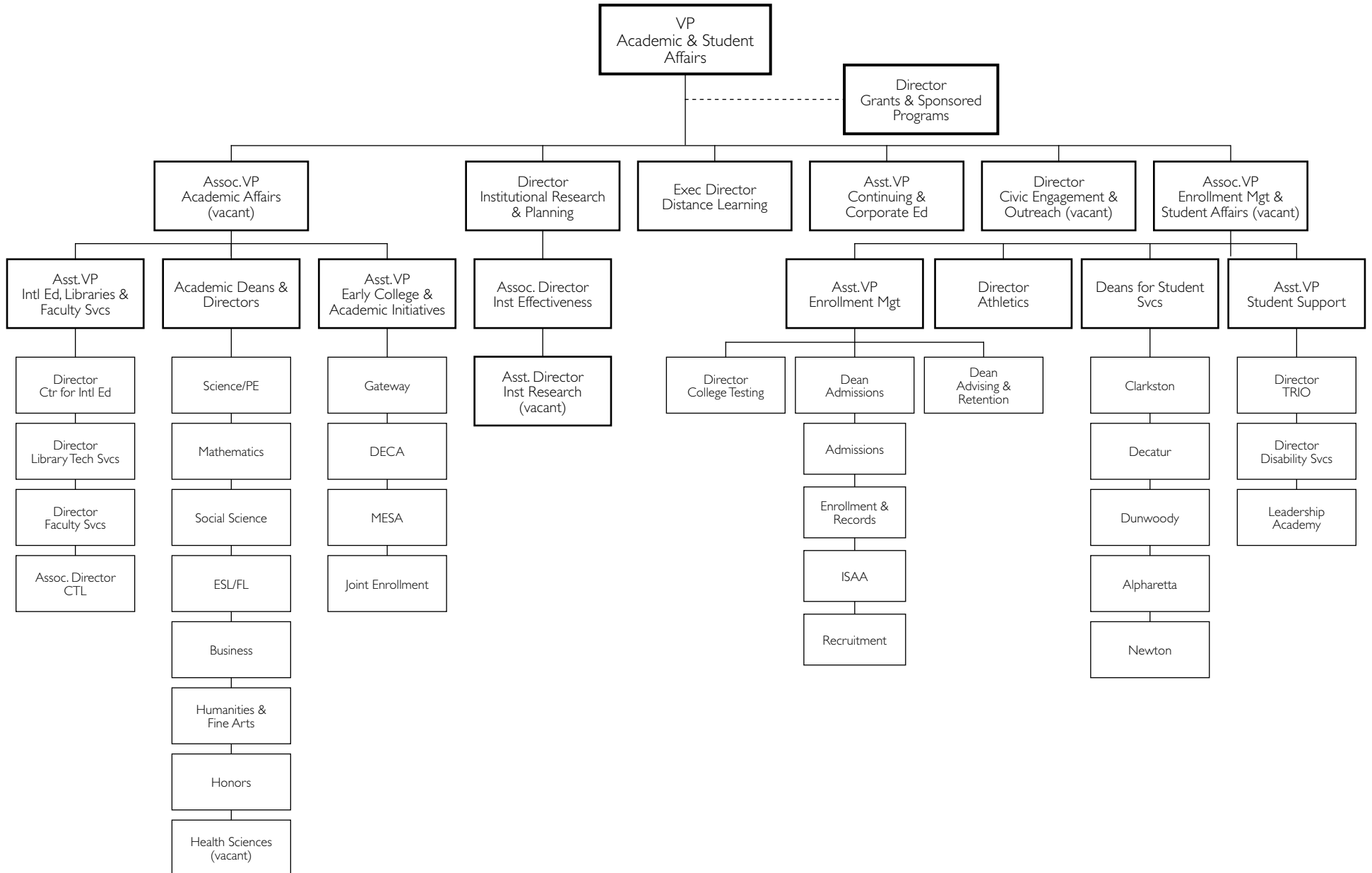
# Administrative Organizational Chart



# Financial and Administrative Affairs Team

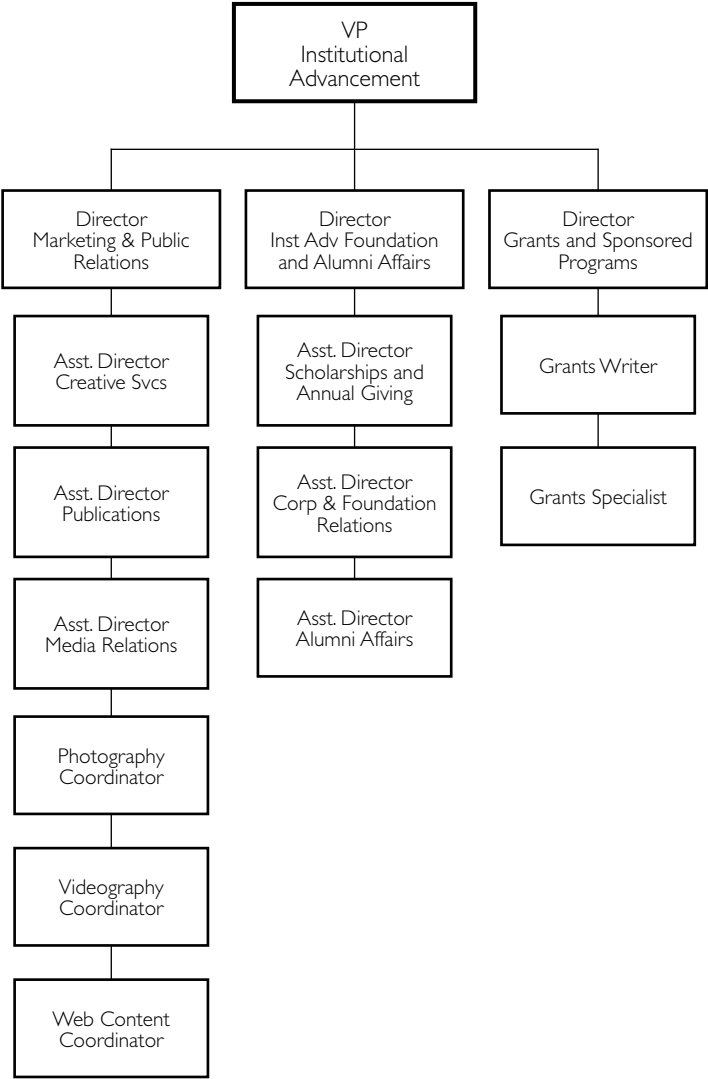


# Educational Affairs Team



# Institutional Advancement

---



## Geographic Locations

---

Alpharetta Center  
3705 Brookside Pkwy  
Alpharetta, GA 30022

Clarkston Campus  
555 North Indian Creek Dr.  
Clarkston, GA 30021-2361

Decatur Campus  
3251 Panthersville Rd.  
Decatur, GA 30034-3897

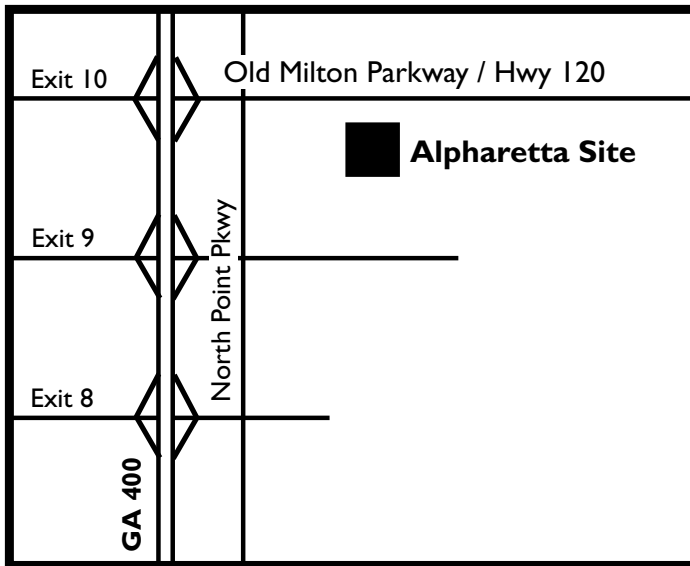
Dunwoody Campus  
2101 Womack Rd.  
Dunwoody, GA 30338-4497

Lawrenceville Site  
1000 University Center Lane  
Lawrenceville, GA 30043

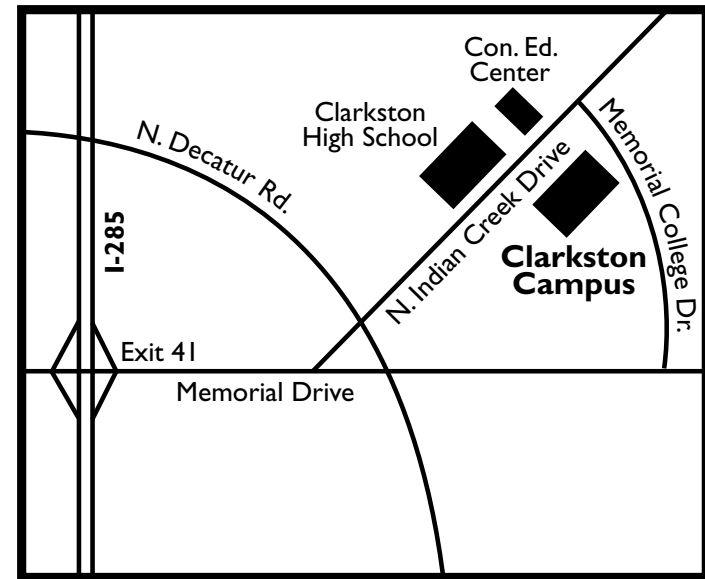
Newton Campus  
239 Cedar Lane  
Covington, GA 30014

# Maps of Alpharetta Site and Clarkston Campus

---



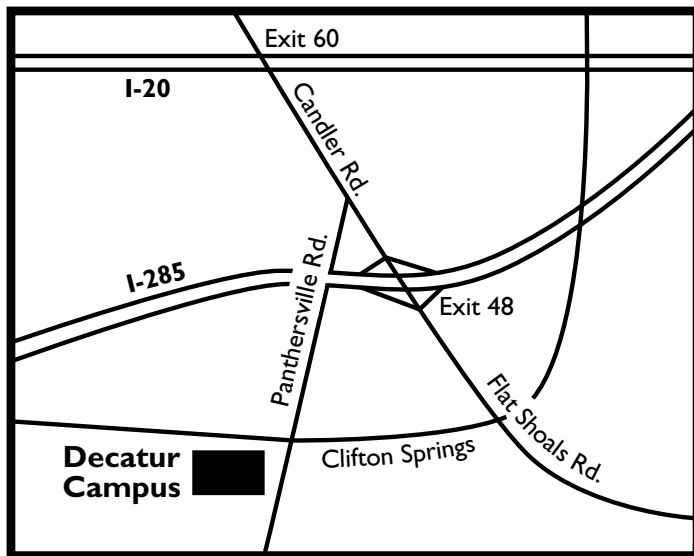
**Alpharetta Site**  
3705 Brookside Pkwy  
Alpharetta, GA 30022-4408



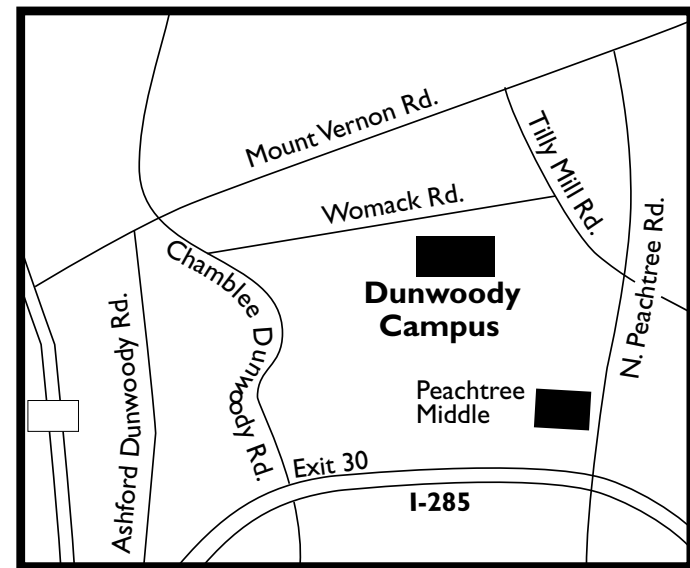
**Clarkston Campus**  
555 North Indian Creek Dr.  
Clarkston, Georgia 30021-2361

# Maps of Decatur and Dunwoody Campuses

---

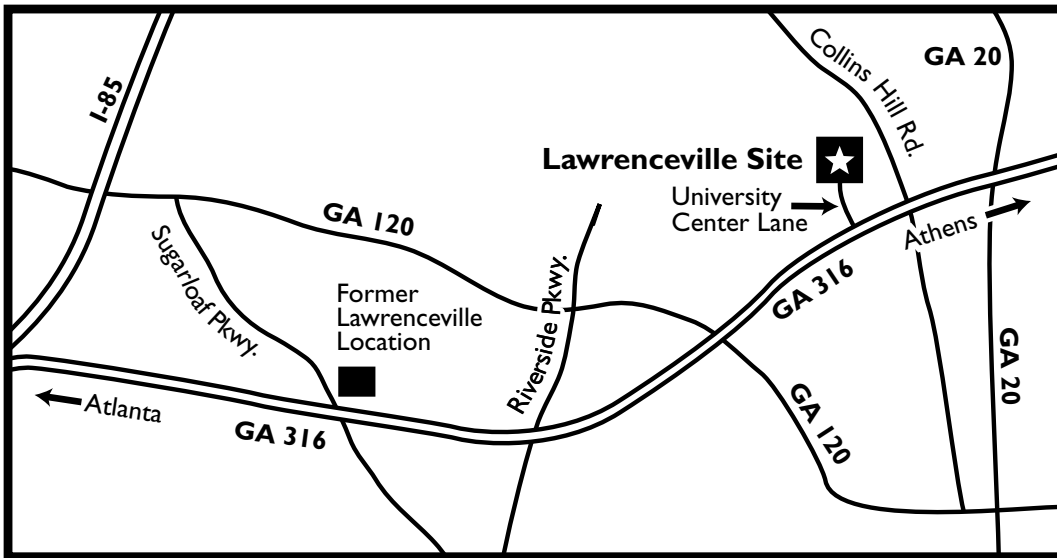


**Decatur Campus**  
3251 Panthersville Road  
Decatur, Georgia 30034-3897

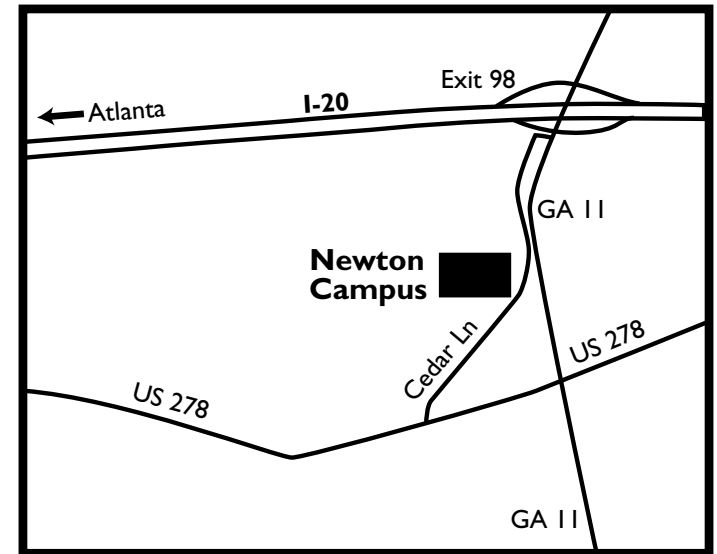


**Dunwoody Campus**  
2101 Womack Road  
Dunwoody, Georgia 30338-4497

# Maps of Lawrenceville Site and Newton Campus



**Lawrenceville Site**  
1000 University Center Lane  
Lawrenceville, Georgia 30043-7409



**Newton Campus**  
239 Cedar Ln.  
Covington, Georgia 30014

# Georgia Perimeter College



## 2006-2007 FACTBOOK

Organization

Academics

Students

Funding & Facilities

Employees



## Academic Programs Offered, FY 2007

---

Anthropology (AA)  
Arts (AA)  
Arts (AS)  
Biology (AA) (M)  
Business Administration (AS)  
Business and Office Technology (AAS) 1  
Chemistry (AA) (M)  
Communications (AA)  
Computer Information Systems (AAS) 1  
Computer Science (AS) (M)  
Criminal Justice (AS)  
Dental Hygiene (Career) (AS)  
Early Childhood Care and Education (AAS) 1  
Electronics Technology (AAS) 1  
Engineering (AS) (M)  
English (AA)  
Fire Management (Career) (AAS) (C)  
Forensic Science (AA)  
Foreign Language (AA)  
General Studies (AS)  
Geology (AA) (M)  
Health and Physical Education (AS) 2  
History (AA)  
Industrial Systems Technology (AAS) 1  
Library and Information Science Techno. (AS) (C)  
Journalism/Professional Writing (AA)

Marketing Management (AAS) 1  
Mathematics (AA) (M)  
Medical Assisting (AAS) 1  
Medical Laboratory Technology (AAS) 1  
Music (AS)  
Nursing (Career) (AS)  
Philosophy (AA)  
Physics (AA) (M)  
Political Science (AA)  
Pre-Dentistry/Pre-Medicine/Pre-Pharmacy (AS) (M)  
Psychology (AA)  
Psychology (AS)  
Sign Language Interpreting (Career) (AAS) (C)  
Social Work (AS)  
Sociology (AA)  
Surgical Technology (AAS) 1  
Teacher Education (AS)  
Theatre (AA)

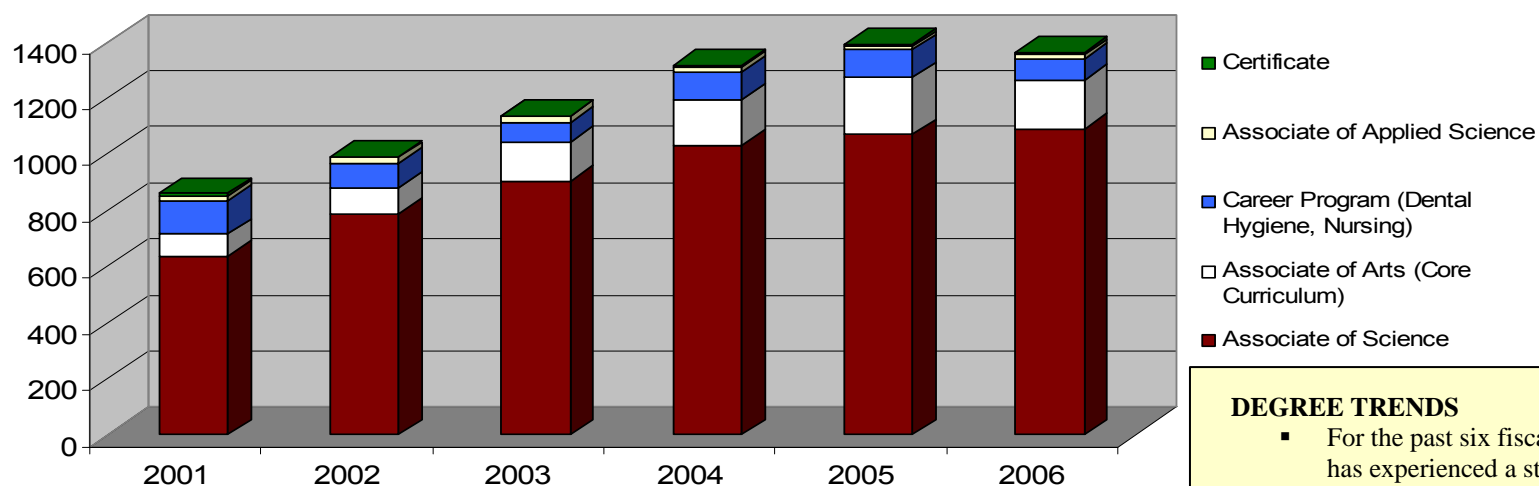
**Note:** AA= Associate of Arts Degree  
AS= Associate of Science Degree  
AAS= Associate of Applied Science Degree  
M= math-based major  
C= Certificate  
1=Dual Degree program with DeKalb Technical College  
2=Teacher Option Available

# Degrees Awarded Summary, FY 2001-2006

Degrees Awarded by Level and Fiscal Year, GPC, FY 2001-2006

Degree Level	2001	2002	2003	2004	2005	2006	%
Associate of Arts (Core Curriculum)	80	91	137	164	203	171	12.6
Associate of Science	635	789	905	1,031	1,066	1,091	80.2
Associate of Applied Science	19	20	23	16	11	12	0.9
Certificate	9	4	0	8	7	8	0.6
Career Program (Dental Hygiene, Nursing)	117	88	71	99	103	79	5.8
<b>Total</b>	<b>860</b>	<b>992</b>	<b>1,136</b>	<b>1,318</b>	<b>1,390</b>	<b>1,361</b>	<b>100.0</b>

Degrees Awarded, FY 2001 - 2006

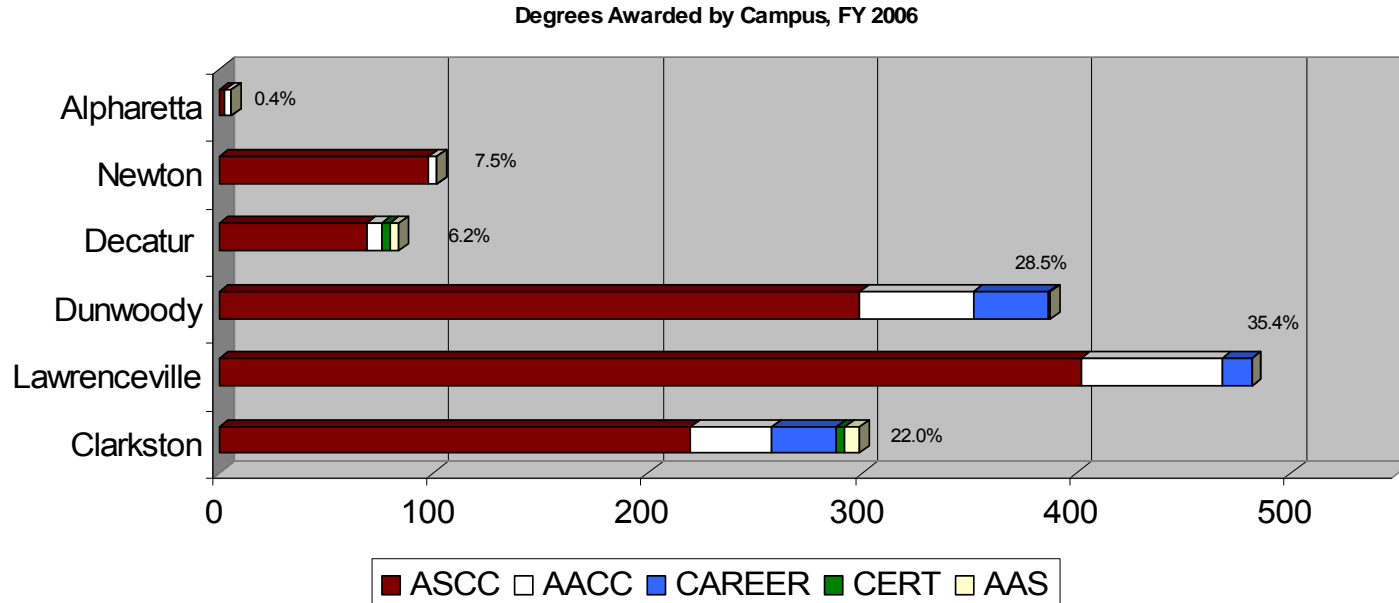


### DEGREE TRENDS

- For the past six fiscal years, GPC has experienced a steady growth in the Associate of Science Degrees.
- For the past five fiscal years, GPC has experienced a 58.3% increase in the numbers of students awarded degrees.

# Degrees Awarded by Campus, FY 2006

Degrees Awarded by Campus, FY 2006							
Degree Level	AACC	ASCC	AAS	CERT	CAREER	TOTAL	%
Clarkston	38	220	7	4	30	299	22.0
Lawrenceville	66	402	0	0	14	482	35.4
Dunwoody	53	299	1	0	35	388	28.5
Decatur	7	69	4	4	0	84	6.2
Newton	4	98	0	0	0	102	7.5
Alpharetta	3	3	0	0	0	6	0.4
<b>Total</b>	<b>171</b>	<b>1,091</b>	<b>12</b>	<b>8</b>	<b>79</b>	<b>1,361</b>	<b>100.0</b>



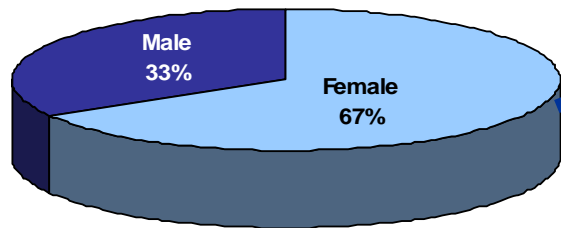
# Degrees Awarded by Ethnicity and Gender, FY 2006

## Degrees Awarded by Ethnicity and Gender, Georgia Perimeter College, FY 2006

	Female		Male		Total	
	#	%	#	%	#	%
Asian	79	62.8	46	37.2	125	9.1
Black	270	71.9	104	28.1	374	27.5
Hispanic	35	60.8	23	39.3	58	4.3
Multiracial	48	63.7	24	37.3	72	5.3
Native American	0	0.0	2	100.0	2	0.1
White	478	65.5	252	34.5	730	53.6
<b>Grand Total Awarded</b>	<b>910</b>	<b>66.9</b>	<b>451</b>	<b>33.1</b>	<b>1,361</b>	<b>100.0</b>

**Note:** In the “Female” and “Male” gender columns, the percentage represents that particular gender’s proportion in the ethnic group (i.e. 62.8% of all degrees awarded to Asians were received by female Asian students). In the last column, the percent indicates the ethnic groups proportion of all degrees awarded (i.e. 27.5% of all degrees awarded were received by Black students).

Degrees Awarded by Gender/Ethnicity, FY 2006



### AT A GLANCE

- Business Administration and Teacher Education were the highest degrees awarded to GPC graduates in FY 2006.
- 84.0% of the female and 17.0% of the male graduates were awarded degrees in the Teacher Education field.
- Half of all male graduates received a degree in Business Administration.

## Degrees Awarded by Major, FY 2006

Degree	Major	#
<b>Associate of Arts</b>		
AACC	Anthropology	5
AACC	Art	4
AACC	Biology	17
AACC	Chemistry	9
AACC	Communications	19
AACC	English	9
AACC	Foreign Language	23
AACC	Geology	3
AACC	History	6
AACC	Journalism	14
AACC	Mathematics	9
AACC	Philosophy	0
AACC	Physics	2
AACC	Political Science	19
AACC	Psychology	21
AACC	Sociology	9
AACC	Theater	2
<b>Total</b>		<b>171</b>

Degree	Major	#
<b>Certificate</b>		
	Fire Management	4
	Sign Language Interpret.	4
<b>Total</b>		<b>8</b>

Degree	Major	#
<b>Associate of Science</b>		
ASCC	Art	22
ASCC	Business Adm.	500
ASCC	Computer Science	25
ASCC	Criminal Justice	28
ASCC	Engineering	10
ASCC	General Studies	106
ASCC	Health & Physical Ed	13
ASCC	Information Tech.	4
ASCC	Music	1
ASCC	Pre-Dentistry	2
ASCC	Pre-Medicine	16
ASCC	Pre-Pharmacy	31
ASCC	Psychology	103
ASCC	Social Work	6
ASCC	Teacher Education	224
<b>Total</b>		<b>1,091</b>

Degree	Major	#
<b>Career Program</b>		
ASDH	Dental Hygiene	35
ASN	Nursing	44
<b>Total</b>		<b>79</b>

Degree	Major	#
<b>Associate of Applied Science</b>		
AASBC	Computer Programming	0
AASFMT	Fire Management	5
AASHC	Medical Assisting	2
AASHC	Medical Laboratory Technology	1
AASSLI	Sign Language Interpreting	3
AASHC	Surgical Technology	1
AASTC	Network Specialist	0
<b>Total</b>		<b>12</b>

## Students Taught by Program by Campus, Fall 2006

Instructional Program Area	Alpharetta	Clarkston	Decatur	Dunwoody	Lawrence ville	Newton	Distance Learning	Total Students Enrolled
<b>Business</b>	64	528	314	1,177	1,168	307	666	4,224
<b>Dent. Hygiene</b>	NA	NA	NA	76	NA	NA	NA	76
<b>ENSL # &amp; Foreign Languages</b>	N/A	651	97	1,050	1,108	95	166	3,167
<b>Fine Arts*</b>	NA	472	84	583	609	116	132	1,996
<b>Humanities</b>	175	2,179	1,128	2,943	3,428	851	972	11,676
<b>Interpreter Training</b>	NA	79	NA	N/A	N/A	NA	NA	79
<b>MATH/Computer Science/Engr.</b>	135	2,284	1,091	2,972	2,942	722	511	10,657
<b>Nursing</b>	NA	152	NA	14	88	NA	26	280
<b>Physical Education</b>	25	560	346	851	812	192	328	3,114
<b>Science</b>	15	1,180	678	1,732	1,973	380	735	6,693
<b>Social Science</b>	168	1,670	726	2,596	2,568	648	1,304	9,680
<b>Others: HEDS (College Success)</b>	NA	137	165	174	88	46	NA	610
<b>Others: MILI (Introduction to Army)</b>	NA	NA	NA	NA	NA	NA	NA	NA
<b>TOTAL**</b>	582	9,892	4,629	14,168	14,784	3,357	4,840	52,252

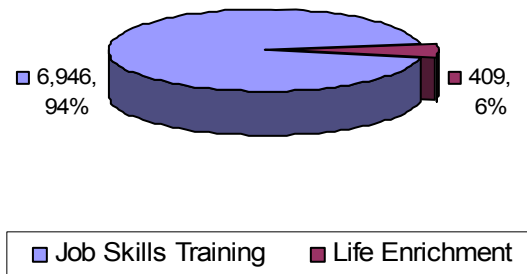
Note: \* Performing Arts students are not included.

\*\*The totals are total students enrolled in all programs for each campus/center and GPC.

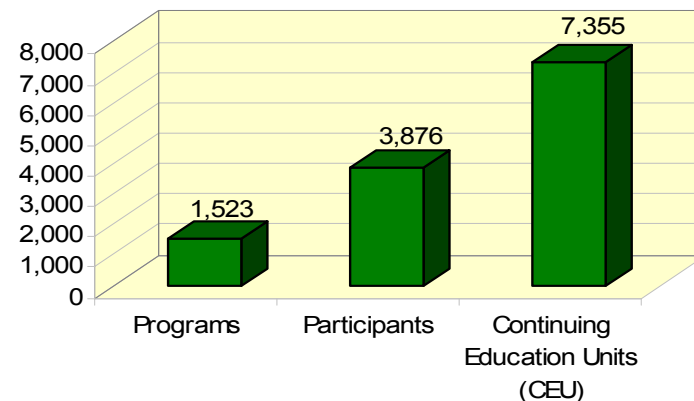
# Continuing and Corporate Education, Fall 2002-2006

Category	2002	2003	2004	2005	2006
<b>Programs</b>					
Job Skills Training	1,055	1,368	1,153	1,149	1,290
Life Enrichment	232	360	224	246	233
<b>Total</b>	<b>1,287</b>	<b>1,728</b>	<b>1,377</b>	<b>1,395</b>	<b>1,523</b>
<b>Participants</b>					
Job Skills Training	4,502	5,299	4,756	4,803	3,289
Life Enrichment	1,009	1,260	1,097	1,299	587
<b>Total</b>	<b>5,511</b>	<b>6,559</b>	<b>5,853</b>	<b>6,102</b>	<b>3,876</b>
<b>Continuing Education Units (CEU)</b>					
Job Skills Training	8,586	9,505	8,740	9,418	6,946
Life Enrichment	2,548	2,196	973	1,288	409
<b>Total</b>	<b>11,134</b>	<b>11,701</b>	<b>9,713</b>	<b>10,706</b>	<b>7,355</b>
<b>EFT</b>	<b>186</b>	<b>195</b>	<b>161</b>	<b>179</b>	<b>193</b>

Continuing Education Units, Fall 2006



Continuing and Corporate Education Activities, Fall 2006



# Georgia Perimeter College



## 2006-2007 FACTBOOK

Organization

Academics

Students

Funding & Facilities

Employees

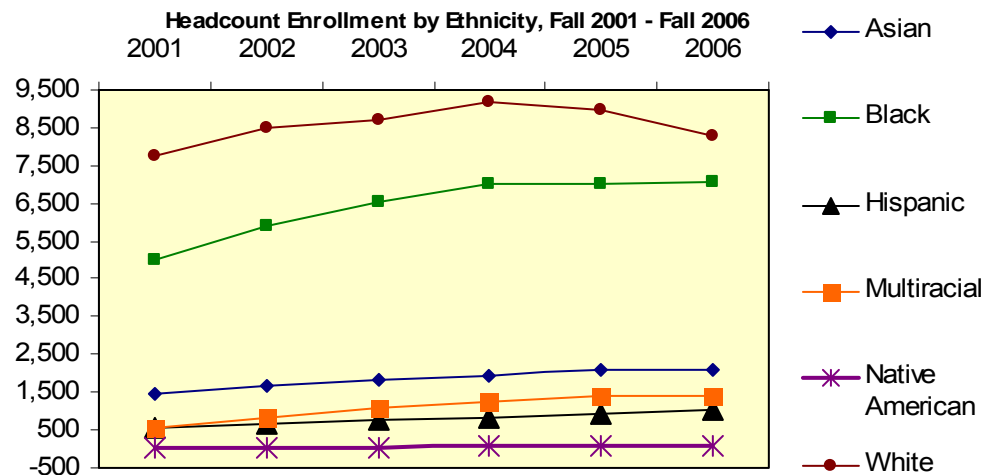


# Enrollment Summary I - GPC All Campuses, Fall 2001-2006

On-Campus Student Enrollment							
	2001	2002	2003	2004	2005	2006	Current %
Total Headcount	15,372	17,573	18,986	20,316	20,461	19,955	100.0
Full-Time	42%	46%	45%	45%	45%	45%	
Part-Time	58%	54%	55%	55%	55%	55%	
Full-Time Equivalent	9,699	11,551	14,242	15,395	15,327	14,964	
On-Campus Student Demographics							
Headcount by Gender:							
Male	5,948	6,617	7,024	7,659	7,805	7,642	38.3
Female	9,424	10,956	11,962	12,657	12,656	12,313	61.7
Headcount by Ethnicity:							
Asian	1,461	1,677	1,846	1,952	2,083	2,094	10.5
Black	4,978	5,886	6,562	7,017	7,009	7,063	35.4
Hispanic	548	648	755	842	933	1,043	5.2
Multiracial	575	848	1,076	1,246	1,389	1,406	7.0
Native American	45	42	51	62	62	63	0.3
White	7,765	8,472	8,696	9,197	8,985	8,286	41.5
Others:							
Senior Citizens	31	33	37	33	40	48	0.2
Non-U.S.	2,443	2,895	3,145	3,324	3,465	3,417	17.1
Average Age	24.7	24.9	25.2	25.4	25.1	24.9	
Median Age	22	22	22	23	22	22	

## AT A GLANCE

- Between Fall 2001 and Fall 2006, GPC's total student enrollment increased by 54.3%.
- During the same period, International Student (non-US citizen) enrollment experienced growth of 39.9%.
- In Fall 2006, GPC ranked 3<sup>rd</sup> among all USG institutions with 19,955 students enrolled.



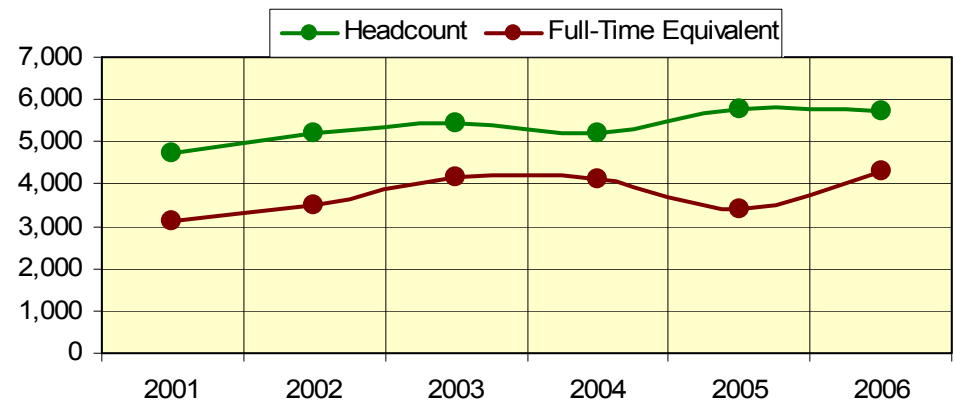
## Enrollment Summary II - GPC All Campuses, Fall 2001-2006

<b>On-Campus Enrollment by Schedule</b>							
	<b>2001</b>	<b>2002</b>	<b>2003</b>	<b>2004</b>	<b>2005</b>	<b>2006</b>	<b>Curr. %</b>
Day	12,526	14,184	15,345	16,671	16,318	16,694	83.7
Evening	7,746	9,101	9,770	10,467	9,724	9,335	46.8
Weekend	2,536	2,939	2,867	3,485	3,454	3,014	15.4
<b>On-Campus Enrollment by Classification</b>							
Learning Support/Developmental Studies	3,821	4,413	4,456	4,823	4,715	4,595	23.0
Joint Enrollment	759	660	730	628	900	786	3.9
Freshman	5,776	6,727	7,056	11,963	11,890	11,834	59.3
Sophomore	4,474	5,183	6,276	7,216	7,218	6,908	34.6
Transient	301	268	211	219	199	161	0.8
Unclassified	241	322	257	290	254	266	1.3
<b>On-Campus New Student Enrollment by Classification</b>							
Learning Support/Developmental Studies	2,295	2,319	2,592	2,677	2,709	2,422	12.1
Joint Enrollment	735	634	695	598	879	761	3.8
Freshman	802	1,102	2,162	3,312	3,387	3,184	15.9
Transfer	907	1,163	499	1,818	1,728	1,122	5.6
Transient	136	112	157	127	118	84	0.4
Unclassified	108	159	152	147	144	133	0.6
Total	4,983	5,489	6,257	6,861	6,256	5,284	28.2
<b>On-Campus Students Needing Learning Support</b>							
Math	3,162	3,751	3,771	4,184	4,106	4,029	20.2
English	1,173	1,258	1,247	1,368	1,254	1,145	5.7
Reading	825	951	880	948	966	753	3.8
Unduplicated Head Count	3,821	4,413	4,456	4,823	4,715	4,595	23.0
<b>On-Campus Student Enrollment by Residence</b>							
Georgia	14,258	16,408	17,802	19,105	19,264	18,648	93.5
Out-of-State	980	1,009	955	570	969	1,072	5.4
Non-Resident Tuition Waived	134	156	229	641	228	235	1.2

# Enrollment of GPC Clarkston, Fall 2001-2006

On-Campus Student Enrollment							
	2001	2002	2003	2004	2005	2006	Current %
Total Headcount	4,709	5,207	5,461	5,185	5,756	5,735	100.0
Full-Time	43%	45%	45%	37%	25%	2,345	40.9
Part-Time	57%	55%	55%	63%	75%	3,390	59.1
Full-Time Equivalent	3,106	3,518	4,169	4,127	3,417	4,325	-
On-Campus Student Demographics							
Headcount by Gender:							
Male	1,662	1,827	1,819	1,772	1,955	1,923	33.5
Female	3,047	3,380	3,642	3,413	3,801	3,812	66.5
Headcount by Ethnicity:							
Asian	649	679	650	541	546	477	8.3
Black	2,648	3,113	3,387	3,067	3,471	3,361	58.6
Hispanic	118	106	116	123	149	174	3.0
Multiracial	191	241	297	331	383	376	6.6
Native American	11	9	9	18	11	12	0.2
White	1,092	1,059	1,002	1,105	1,196	1,335	23.3
Others:							
Senior Citizens	12	9	19	15	15	11	0.2
Non-U.S.	1,158	1,273	1,277	1,170	1,199	1,016	17.7
Average Age	25.8	25.8	26.1	28.3	26.6	26.1	-
Median Age	23	23	23	26	24	23	-

Clarkston Enrollment and Full-Time Equivalent, Fall 2000 - 2006



**IN FALL 2006**

- Clarkston's average number of semester credit hours was 9.71 hours per student.

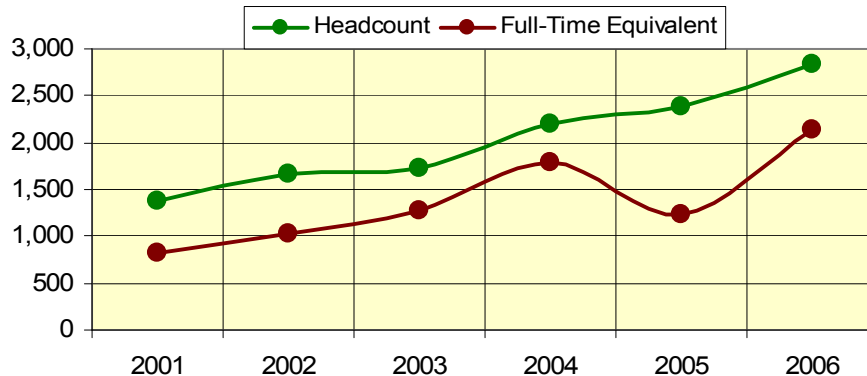
## Enrollment of GPC Clarkston, Fall 2001-2006 (Continued)

<b>On-Campus Enrollment by Schedule</b>							
	<b>2001</b>	<b>2002</b>	<b>2003</b>	<b>2004</b>	<b>2005</b>	<b>2006</b>	<b>Current %</b>
Day	4,047	4,439	4,672	4,332	4,604	4,427	77.1
Evening	2,283	2,644	2,832	2,312	2,644	2,434	42.4
Weekend	916	945	952	778	1,023	891	15.5
<b>On-Campus Enrollment by Classification</b>							
Learning Support/Developmental Studies	1,204	1,387	1,436	1,323	1,367	1,335	23.2
Joint Enrollment	37	37	57	67	48	30	0.5
Freshman	1,625	1,851	1,885	1,669	1,821	3,180	55.4
Sophomore	1,686	1,786	1,979	1,981	2,307	2,385	41.6
Transient	86	66	36	57	50	56	1.0
Unclassified	71	80	68	91	67	78	1.4
<b>On-Campus New Student Enrollment by Classification</b>							
Learning Support/Developmental Studies	632	667	798	623	868	645	11.2
Joint Enrollment	33	33	55	60	44	29	0.5
Freshman	217	270	489	196	743	685	11.9
Transfer	252	293	160	279	542	476	8.3
Transient	36	27	24	37	43	31	0.5
Unclassified	34	34	38	42	45	48	0.8
Total	1,204	1,324	1,564	1,237	2,285	1,914	33.4
<b>On-Campus Students Needing Learning Support</b>							
Math	1,037	1,199	1,221	1,176	1,230	1,218	21.4
English	349	399	374	356	340	316	5.5
Reading	257	292	295	236	254	214	3.7
Unduplicated Head Count	1,204	1,387	1,436	1,323	1,367	1,335	23.3
<b>On-Campus Student Enrollment by Residence</b>							
Georgia	4,329	4,807	5,066	4,881	5,427	5,435	94.6
Out-of-State	329	333	302	249	279	232	4.0
Non-Resident Tuition Waived	51	67	93	55	50	68	1.2

# Enrollment of GPC Decatur, Fall 2001-2006

On-Campus Student Enrollment							
	2001	2002	2003	2004	2005	2006	Current %
Total Headcount	1,375	1,662	1,732	2,200	2,384	2,831	100.0
Full-Time	34%	37%	36%	36%	17%	1,140	40.3
Part-Time	66%	63%	64%	64%	83%	1,691	59.7
Full-Time Equivalent	822	1,037	1,266	1,795	1,231	2,137	-
On-Campus Student Demographics							
Headcount by Gender:							
Male	380	426	467	641	673	788	27.8
Female	995	1,236	1,265	1,559	1,711	2,043	72.1
Headcount by Ethnicity:							
Asian	32	51	64	72	126	144	5.1
Black	1,181	1,411	1,475	1,757	1,821	2,049	72.4
Hispanic	11	20	16	32	26	43	1.5
Multiracial	37	67	65	106	145	165	5.8
Native American	0	0	4	2	7	9	0.3
White	114	113	108	231	259	430	15.2
Others:							
Senior Citizens	0	2	5	4	3	5	0.2
Non-U.S.	74	124	136	162	242	271	9.8
Average Age	25.3	25.5	25.9	27.0	26.3	25.9	-
Median Age	22	22	22	24	23	23	-

Decatur Enrollment and Full-Time Equivalent, Fall 2001-2006



### Fast Fact- Fall 2005

- Pre-Nursing ranked 1<sup>st</sup> among the Decatur's student enrollment, with 93% female and 7% male enrollment in this major.
- 46% of Decatur students were awarded Grant based financial aid.

## Enrollment of GPC Decatur, Fall 2001-2006 (Continued)

<b>On-Campus Enrollment by Schedule</b>							
	<b>2001</b>	<b>2002</b>	<b>2003</b>	<b>2004</b>	<b>2005</b>	<b>2006</b>	<b>Current %</b>
Day	1,178	1,408	1,487	1,604	1,957	2,233	78.9
Evening	650	813	866	834	1,094	1,230	43.4
Weekend	328	215	358	145	466	474	16.7%
<b>On-Campus Enrollment by Classification</b>							
Learning Support/Developmental Studies	501	625	603	733	744	817	28.8
Joint Enrollment	9	2	10	13	26	26	0.9
Freshman	441	535	559	713	658	823	29.0
Sophomore	386	460	530	693	888	1,100	38.7
Transient	20	13	11	21	12	21	0.7
Unclassified	18	27	19	27	35	40	1.4
<b>On-Campus New Student Enrollment by Classification</b>							
Learning Support/Developmental Studies	262	313	304	367	457	391	13.8
Joint Enrollment	9	2	8	13	22	24	0.8
Freshman	34	106	108	75	350	377	13.3
Transfer	70	40	42	130	188	220	7.8
Transient	8	5	9	15	12	11	0.4
Unclassified	9	14	12	14	18	20	0.7
<b>Total</b>	<b>392</b>	<b>480</b>	<b>483</b>	<b>614</b>	<b>1,047</b>	<b>1,043</b>	<b>36.8</b>
<b>On-Campus Students Needing Learning Support</b>							
Math	386	490	494	613	636	687	24.3
English	177	244	228	254	273	277	9.8
Reading	163	210	170	209	203	207	7.3
Unduplicated Head Count	501	625	603	733	744	817	28.9
<b>On-Campus Student Enrollment by Residence</b>							
Georgia	1,323	1,587	1,659	2,083	2,316	2,712	95.8
Out-of-State	41	60	53	95	53	92	3.2
Non-Resident Tuition Waived	11	15	20	22	15	27	1.0

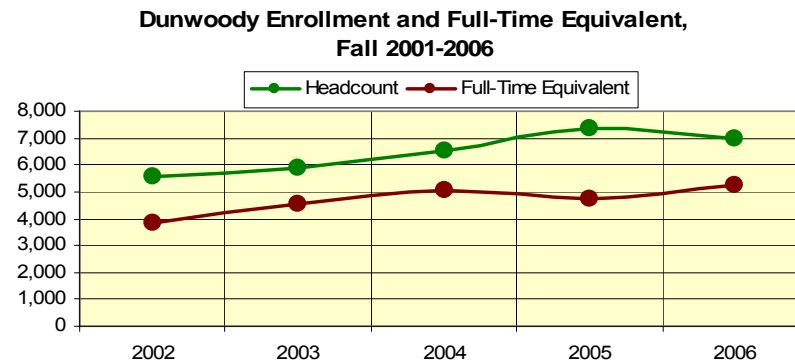
# Enrollment of GPC Dunwoody, Fall 2001-2006

On-Campus Student Enrollment															
	2001		2002		2003		2004		2005		2006		Current %		
Total Headcount	5,099	275	5,552	376	5,875	307	6,558	391	7,363	589	6,986	494	100.0	100.0	
Full-Time	46%	61%	49%	67%	49%	66%	48%	64%	32%	10%	3,070	204	44.0	41.3	
Part-Time	54%	39%	51%	33%	51%	34%	52%	36%	68%	91%	3,916	290	56.1	58.7	
Full-Time Equivalent	3,417	208	3,859	290	4,564	264	5,088	334	4,720	239	5,255	320	-	-	
On Campus Student Demographics															
Headcount by Gender:	Male	2,231	121	2,375	181	2,433	150	2,796	186	3,101	289	2,835	224	40.6	45.3
	Female	2,868	154	3,177	195	3,442	157	3,762	205	4,262	300	4,151	270	59.4	54.7
Headcount by Ethnicity:	Asian	677	23	752	25	846	29	880	20	939	52	839	51	12.0	10.3
	Black	959	19	1,153	20	1,364	27	1,592	30	1,768	32	1,755	32	25.1	6.5
	Hispanic	321	13	343	13	364	12	406	11	442	26	450	22	6.4	4.5
	Multiracial	217	12	304	10	390	24	462	30	540	38	479	28	6.7	5.7
	Native American	19	1	20	0	23	0	33	3	32	5	26	1	0.4	0.2
	White	2,906	207	2,980	308	2,888	215	3,185	297	3,642	436	3,503	365	50.1	73.9
Others:	Senior Citizens	13	0	20	1	13	0	13	0	13	0	17	1	0.2	0.2
	Non-U.S.	1,148	28	1,339	27	1,419	35	1,487	290	1,552	49	1,258	39	21.1	8.3
	Average Age	24.3	22.1	24.4	22.1	24.6	21.9	25.8	23.2	24.8	20.0	24.6	19.9	-	-
	Median Age	22	20	22	20	22	20	24	21	22	18	22	19	-	-

Note: For the years 2001 through 2006, there are two numbers for each category. The first one is for Dunwoody and the second Alpharetta respectively. The two charts are for Dunwoody only.

**Fast Fact – Fall 2006**

- Among the six campuses Dunwoody has the largest enrollment of Non-U.S citizens.
- General Studies, Business Administration, Pre-Nursing, and Engineering are the top 4 majors among Dunwoody's



## Enrollment of GPC Dunwoody, Fall 2001-2006 (Continued)

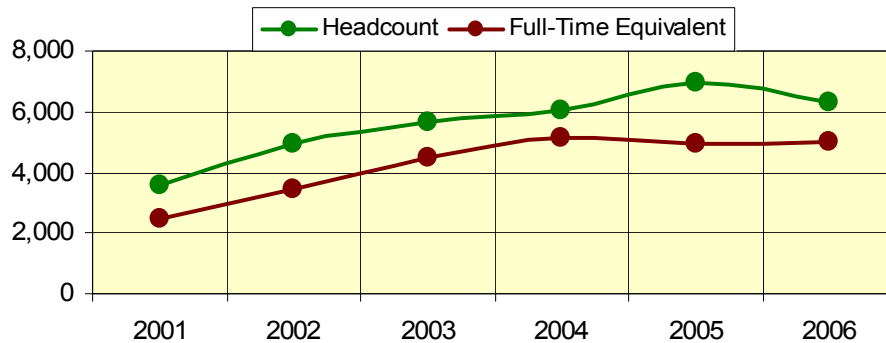
<b>On-Campus Enrollment by Schedule</b>														
	2001		2002		2003		2004		2005		2006		Current %	
Day	4,202	274	4,710	376	4,945	307	5,399	391	5,833	331	5,255	303	75.2	61.3
Evening	2,954	73	3,196	93	3,182	61	3,228	0	3,522	72	3,285	57	47.0	11.5
Weekend	914	32	1,025	28	1,051	27	1,219	0	1,440	36	1,183	33	16.9	6.7
<b>On-Campus Enrollment by Classification</b>														
Learning Support/Developmental Studies	1,057	53	1,219	128	1,232	79	1,397	123	1,471	115	1,327	106	19.0	21.5
Joint Enrollment	136	16	112	12	123	18	158	14	337	263	336	183	4.8	37.0
Freshman	2,002	143	2,195	159	2,243	126	2,474	186	2,645	140	2,607	146	37.3	30.0
Sophomore	1,675	48	1,817	63	2,081	79	2,334	63	2,678	62	2,540	57	36.4	11.5
Transient	122	11	80	11	74	4	68	2	77	4	58	2	0.8	0.4
Unclassified	107	4	129	3	122	1	127	0	114	0	114	0	1.6	0.0
<b>On-Campus New Student Enrollment by Classification</b>														
Learning Support/Developmental Studies	544	34	615	82	718	54	779	82	934	91	695	68	9.9	13.8
Joint Enrollment	122	15	104	12	115	17	136	12	335	263	327	183	4.7	37.0
Freshman	312	44	575	31	664	48	346	46	1002	115	881	94	12.7	19.0
Transfer	372	23	122	28	171	9	412	41	666	43	566	39	8.1	7.9
Transient	53	6	35	3	59	3	42	1	66	4	27	2	0.4	0.4
Unclassified	48	0	67	2	75	1	61	0	82	0	50	1	0.7	0.2
Total	1,451	122	1518	158	1802	132	1,776	182	3,085	516	2,546	387	36.4	78.3
<b>On-Campus Students Needing Learning Support</b>														
Math	883	52	1048	105	1062	64	1188	113	1,285	108	1,170	102	25.3	20.6
English	298	7	331	44	342	26	363	20	324	15	279	10	4.0	2.0
Reading	181	5	211	29	219	14	254	18	264	17	168	5	2.4	1.0
Unduplicated Head Count	1,057	53	1,219	128	1,232	79	1,397	123	1,471	115	1,327	106	19.0	21.5
<b>On-Campus Student Enrollment by Residence</b>														
Georgia	4,482	242	4,876	355	5,198	290	5,846	369	6,746	574	6,538	471	93.5	95.3
Out-of-State	529	32	552	17	546	14	577	18	548	14	362	19	5.2	3.8
Non-Resident Tuition Waived	88	1	124	4	131	3	135	1	69	1	86	4	1.2	1.0

Note: For the years 2000 through 2005, there are two numbers. The first one is for Dunwoody and the second Alpharetta, respectively.

# Enrollment of GPC Lawrenceville, Fall 2001-2006

<b>On-Campus Student Enrollment</b>							
	<b>2001</b>	<b>2002</b>	<b>2003</b>	<b>2004</b>	<b>2005</b>	<b>2006</b>	<b>Current %</b>
Total Headcount	3,602	4,933	5,634	6,022	6,982	6,302	100.0
Full-Time	52%	55%	53%	53%	42%	3,272	51.9
Part-Time	48%	45%	47%	47%	58%	3,030	48.0
Full-Time Equivalent	2,445	3,468	4,482	5,168	4,918	4,999	-
<b>On-Campus Student Demographics</b>							
Headcount by Gender:							
Male	1,525	2,001	2,259	2,426	2,706	2,575	40.9
Female	2,077	2,932	3,375	3,596	4,276	3,727	59.1
Headcount by Ethnicity:							
Asian	278	461	543	630	843	807	12.8
Black	303	562	703	802	1,217	1,149	18.2
Hispanic	126	205	291	306	420	433	6.9
Multiracial	113	233	303	338	475	20	0.3
Native American	6	14	14	15	20	384	6.1
White	2,776	3,458	3,780	3,931	4,007	3,543	56.2
Others:							
Senior Citizens	0	2	2	2	2	3	0.04
Non-U.S.	321	564	735	767	1,117	967	15.3
Average Age	22.7	23.2	23.5	24.5	24.0	23.5	-
Median Age	20	21	21	22	21	21	-

**Lawrenceville Enrollment and Full-Time Equivalent, Fall 2001-2006**



## AT A GLANCE

- Lawrenceville had the highest number of degrees awarded in FY 2006
- Lawrenceville had the lowest average age among the five major campuses.
- Total enrollment for Lawrenceville increased over 100% since Fall 2000.

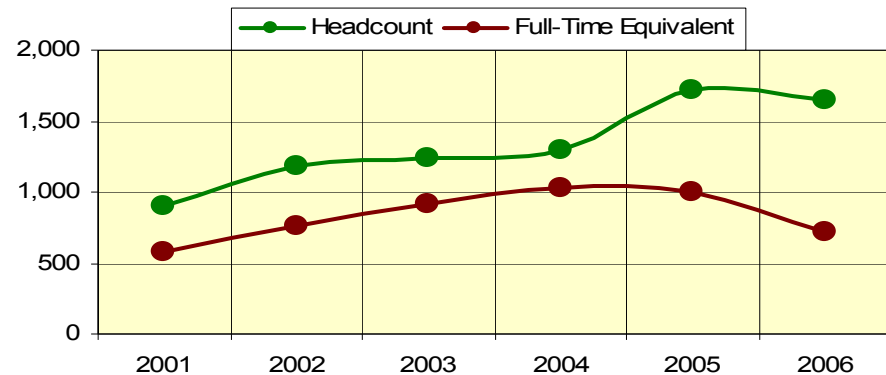
## Enrollment of GPC Lawrenceville, Fall 2001-2006 (Continued)

<b>On-Campus Enrollment by Schedule</b>							
	<b>2001</b>	<b>2002</b>	<b>2003</b>	<b>2004</b>	<b>2005</b>	<b>2006</b>	<b>Current %</b>
Day	3,042	4,145	4,772	5,382	5,736	5,165	82.0
Evening	1,956	2,874	3,318	3,557	3,633	3,260	51.7
Weekend	718	1,052	1,007	1,221	1,447	1,268	20.1
<b>On-Campus Enrollment by Classification</b>							
Learning Support/Developmental Studies	892	1,059	1,031	1,201	1,238	1,149	18.2
Joint Enrollment	130	192	188	211	160	126	2.0
Freshman	1,518	2,086	2,262	2,341	2,692	2,470	39.2
Sophomore	1,001	1,455	2,042	2,151	2,703	2,426	38.5
Transient	42	72	57	68	77	54	0.9
Unclassified	19	69	54	50	80	72	1.1
<b>On-Campus New Student Enrollment by Classification</b>							
Learning Support/Developmental Studies	587	642	666	765	856	633	10.0
Joint Enrollment	128	182	182	204	154	119	1.9
Freshman	241	719	806	626	1,260	1,096	17.4
Transfer	284	115	149	310	474	356	5.6
Transient	17	31	43	33	62	25	0.4
Unclassified	5	33	32	23	51	38	0.6
Total	1,262	1,722	1,878	1,961	2,857	2,267	36.0
<b>On-Campus Students Needing Learning Support</b>							
Math	736	897	858	1,030	1,056	992	15.7
English	294	289	282	351	345	271	4.3
Reading	202	226	186	221	249	163	2.6
Unduplicated Head Count	892	1,059	1,031	1,201	1,238	1,149	18.2
<b>On-Campus Student Enrollment by Residence</b>							
Georgia	3,498	4,760	5,458	5,843	6,749	6,078	96.4
Out-of-State	96	160	150	164	212	197	3.1
Non-Resident Tuition Waived	8	13	26	15	21	27	0.4

# Enrollment of GPC Newton, Fall 2001-2006

On-Campus Student Enrollment							
	2001	2002	2003	2004	2005	2006	Current %
Total Headcount	908	1,179	1,233	1,291	1,724	1,643	100.0
Full-Time	44%	47%	42%	41%	29%	725	28.5
Part-Time	56%	53%	58%	59%	72%	918	71.5
Full-Time Equivalent	582	767	909	1,034	1,003	1,236	-
On-Campus Student Demographics							
Headcount by Gender:							
Male	281	350	372	418	506	507	30.9
Female	627	829	861	873	1,218	1,136	69.1
Headcount by Ethnicity:							
Asian	12	16	18	14	28	33	2.0
Black	145	301	334	264	568	573	34.9
Hispanic	10	16	20	30	30	37	2.3
Multiracial	21	39	56	51	97	90	5.5
Native American	3	0	3	1	3	2	0.1
White	717	807	802	931	998	913	55.6
Others:							
Senior Citizens	2	2	0	1	2	1	0.1
Non-U.S.	22	39	37	29	77	77	4.7
Average Age	24.4	24.8	24.7	25.7	25.3	24.6	-
Median Age	21	21	21	22	22	21	-

Rockdale Enrollment and Full-Time Equivalent, Fall 2001-2006



## AT A GLANCE

- The Newton location is GPC newest campus. Opened June 4, 2007.

## Enrollment of GPC Newton, Fall 2001-2006 (Continued)

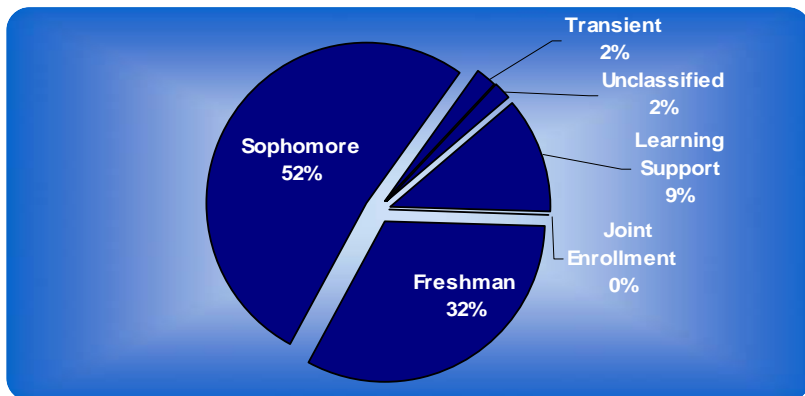
<b>On-Campus Enrollment by Schedule</b>							
	<b>2001</b>	<b>2002</b>	<b>2003</b>	<b>2004</b>	<b>2005</b>	<b>2006</b>	<b>Current %</b>
Day	677	878	916	1,029	1,242	1,205	73.3
Evening	665	806	839	902	1,015	969	59.0
Weekend	56	32	44	122	204	184	11.2
<b>On-Campus Enrollment by Classification</b>							
Learning Support/Developmental Studies	266	326	322	312	403	428	26.0
Joint Enrollment	22	37	57	102	85	89	5.4
Freshman	367	464	471	455	646	562	34.2
Sophomore	232	322	368	408	558	549	33.4
Transient	12	11	12	7	9	6	0.4
Unclassified	9	19	3	7	11	8	0.5
<b>On-Campus New Student Enrollment by Classification</b>							
Learning Support/Developmental Studies	166	198	206	208	304	245	15.0
Joint Enrollment	21	36	55	99	82	83	5.1
Freshman	67	113	140	87	320	282	17.2
Transfer	50	26	23	56	162	111	6.8
Transient	6	4	9	4	6	4	0.2
Unclassified	2	6	3	2	5	4	0.2
Total	311	383	436	456	879	729	44.4
<b>On-Campus Students Needing Learning Support</b>							
Math	212	276	268	277	365	377	23.0
English	82	79	92	91	104	95	5.8
Reading	50	77	68	55	80	63	3.8
Unduplicated Head Count	266	326	322	312	403	428	26.0
<b>On-Campus Student Enrollment by Residence</b>							
Georgia	893	1,147	1,216	1,275	1,694	1,603	97.5
Out-of-State	15	29	11	13	26	34	2.1
Non-Resident Tuition Waived	0	3	6	3	4	6	0.4

# Enrollment of GPC Distance Learning Education, Fall 2001-2006

Off-Campus/Distance Education Student Enrollment							
	2001	2002	2003	2004	2005	2006	Current %
Total Headcount	1,721	1,961	1,896	1,839	2,555	2,649	100.0
Full-Time	32%	39%	33%	31%	27%	946	35.7
Part-Time	68%	61%	67%	69%	73%	1,703	64.3
Full-Time Equivalent	971	1,209	1,270	1,248	1,581		-

Off-Campus/Distance Education Student Demographics								
Headcount by Gender:	Male	567	607	586	515	758	683	25.8
	Female	1,154	1,354	1,310	1,324	1,797	1,966	74.2
Headcount by Ethnicity:	Asian	80	96	87	96	154	136	5.1
	Black	460	571	589	560	692	879	33.2
	Hispanic	43	43	45	41	72	104	3.9
	Multiracial	60	97	99	106	161	181	6.8
	Native American	4	6	3	5	10	8	0.3
	White	1,074	1,148	1,073	1,031	1,466	1,341	50.6
Others:	Senior Citizens	1	0	0	0	1	1	0.04
	Non-U.S.	122	157	153	155	203	70	2.6
	Average Age	24.5	25.6	26.0	26.2	25.6	27.2	-
	Median Age	22	23	24	23	23	25	-

Off Campus/Distance Education Enrollment by Classification, Fall 2006



**AT A GLANCE**

- There were 13 degree granting distance education programs at GPC in the 2006-2007 academic year that led to an Associate degrees.
- Students who took at least one distance learning course averaged a higher GPA than those who did not.

## Enrollment of GPC Off-Campus/Distance Ed., Fall 2001-2006 (Cont.)

<b>Off-Campus/Distance Education Enrollment by Schedule</b>							
	2001	2002	2003	2004	2005	2006	Current %
Day	1,198	1,152	899	990	1,023	1,327	50.1
Evening	588	777	679	768	779	467	17.6
Weekend	256	346	248	291	348	387	14.6
<b>Off-Campus/Distance Education Enrollment by Classification</b>							
Learning Support/Developmental Studies	103	242	206	230	237	307	11.6
Joint Enrollment	447	296	299	117	480	5	0.2
Freshman	404	534	465	532	662	847	32.0
Sophomore	695	796	880	876	1,075	1,389	52.4
Transient	35	53	39	44	43	54	2.0
Unclassified	37	40	35	40	52	47	1.7
<b>Off-Campus/Distance Education New Student Enrollment by Classification</b>							
Learning Support/Developmental Studies	39	91	89	112	107	139	5.2
Joint Enrollment	440	290	284	115	477	3	0.1
Freshman	22	90	85	87	120	55	2.1
Transfer	79	44	60	96	129	155	5.9
Transient	14	21	26	29	27	30	1.1
Unclassified	19	27	24	24	23	27	1.0
Total	613	563	568	463	883	409	15.4
<b>Off-Campus/Distance Education Students Needing Learning Support</b>							
Math	93	233	197	222	228	239	9.0
English	12	27	15	29	25	25	0.9
Reading	6	15	6	16	10	12	0.5
Unduplicated Head Count	103	242	206	230	237	307	11.6
<b>Off-Campus/Distance Education Student Enrollment by Residence</b>							
Georgia	1,668	1,892	1,817	1,735	2,470	2,480	93.6
Out-of-State	47	54	63	91	77	140	5.2
Non-Resident Tuition Waived	6	15	16	13	8	29	1.1

# Enrollment by Age Group, Fall 2002-2006; and by County, Fall 2006

**Enrollment by Age Group, Fall 2002 to 2006**

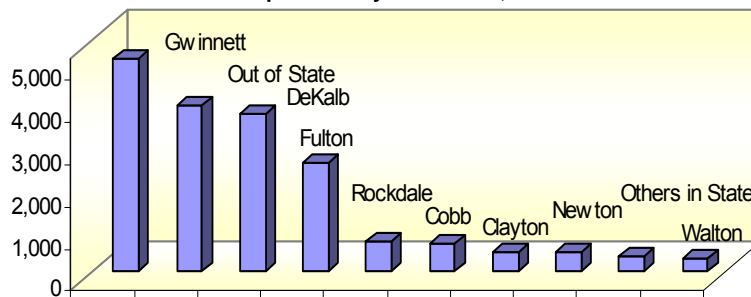
	2002	2003	2004	2005	2006
Under 18	511	727	453	875	960
18-19	3,672	4,000	4,128	4,580	4,864
20-21	4,204	4,263	4,495	4,485	4,275
22-24	3,292	3,371	3,840	3,532	3,215
25-29	2,533	2,716	3,107	2,940	2,825
30-34	1,418	1,697	1,795	1,680	1,484
35-39	894	981	1,072	1,032	1,056
40-49	833	975	1,139	1,049	982
50-64	191	230	256	255	259
65 +	25	26	31	33	35
<b>Total</b>	<b>17,573</b>	<b>18,986</b>	<b>20,316</b>	<b>20,461</b>	<b>19,955</b>

**Enrollment by County, Fall 2006**

County	Enrollment	*Percent
Barrow	137	0.7
Cherokee	130	0.7
Clarke	22	0.1
Clayton	450	2.3
Cobb	638	3.2
DeKalb	3,723	18.7
Douglas	69	0.3
Fayette	44	0.2
Forsyth	185	0.9
Fulton	2,551	12.8
Gwinnett	5,025	25.2
Henry	222	1.1
Newton	438	2.2
Rockdale	706	3.5
Walton	283	1.4
Others in State	361	1.8
Out of State	4,971	24.9
<b>Total</b>	<b>19,955</b>	<b>100.0</b>

\*Percentages may not sum to 100.0 due to rounding.

**Top 10 County Enrollment, Fall 2006**



# High Schools Attended by 100 or More Students in Fall 2006

(This table is continued on the next page)

High School		Total Fall Enrollment		New Student Enrollment		Enrollment of New HS Grads	
		2005	2006	2005	2006	2005	2006
<b>DeKalb</b>	Clarkston	124	132	34	31	21	20
	Cedar Grove	130	137	35	37	14	9
	Chamblee	117	110	39	30	13	18
	Columbia	137	137	37	32	23	13
	Cross Keys	112	104	15	21	10	11
	Druid Hills	146	132	35	23	14	11
	Dunwoody	209	186	101	80	16	20
	Lakeside	154	163	40	55	12	14
	Lithonia	145	142	37	42	13	25
	Open Campus	220	207	45	35	18	14
	Redan	190	177	47	43	17	17
	Southwest DeKalb	167	161	30	51	13	28
	Stephenson	145	167	47	62	23	25
	Stone Mountain	130	139	46	46	13	24
	Towers	110	109	29	29	10	13
Tucker	151	161	43	44	26	28	
<b>Fulton</b>	Chattahoochee/Crestwood	263	184	129	65	33	20
	Milton	259	244	125	105	36	20
	North Springs	173	162	99	90	17	20
	Northview	210	246	173	166	30	24
	Roswell	194	206	113	130	21	27
<b>Gwinnett</b>	Berkmar	321	308	82	81	63	60
	Brookwood	397	372	156	125	92	74
	Centennial	164	141	75	75	16	17
	Central Gwinnett	321	337	110	95	82	67
	Collins Hill	598	534	210	156	131	102
	Dacula	324	293	116	74	72	47
	Duluth	308	267	105	61	50	42
	Meadowcreek	255	261	57	67	38	51
	Norcross	254	245	61	58	39	36
	North Gwinnett	213	177	72	61	43	33
	Parkview	332	317	87	95	52	63
	Phoenix (Open Campus)	287	266	70	58	29	28
	Shiloh	269	229	69	60	43	35
South Gwinnett	289	237	88	54	41	29	
<b>Newton</b>	Newton County Comp.	178	196	70	57	37	38

High School	Total Fall Enrollment		New Student Enrollment		Enrollment of New HS Grads	
	2005	2006	2005	2006	2005	2006
<b>Newton</b> Heritage	186	225	71	108	33	31
Newton	168	153	71	47	27	22
Salem High School	157	140	57	52	18	33
<b>Walton</b> Faith Academy	149	159	52	51	22	18
Grayson	221	275	101	125	71	80
Loganville	155	138	49	43	33	28

Source: Office of Institutional Research and Planning

**Note: All numbers are High School students attending GPC. “New High School Grad” refers to a student new to GPC and newly graduated from High School. Table includes high schools that enrolled 100 or more students to GPC in Fall 2006.**

# International Student Enrollment I, Fall 2003-2006

Country	03	04	05	06	Country	03	04	05	06	Country	03	04	05	06
Afghanistan	10	14	17	19	China	67	65	68	65	Iceland	NA	NA	3	1
Albania	4	7	8	8	Colombia	102	128	130	113	India	194	190	216	191
Algeria	2	1	2	2	Congo/Brazzaville	11	18	15	13	Indonesia	34	31	23	24
Angola	2	NA	NA	NA	Congo/Kinshasa	4	2	2	NA	Iran	105	93	80	69
Antigua	2	2	2	2	Costa Rica	4	3	3	4	Iraq	3	3	8	11
Argentina	9	12	15	14	Cote D'Ivoire	NA	24	33	36	Ireland	4	4	2	2
Armenia	2	1	2	2	Croatia	4	13	14	13	Israel	9	7	8	5
Aruba	NA	3	2	5	Cuba	10	6	6	8	Italy	1	7	8	7
Australia	5	7	8	5	Czech Rep.	3	5	7	8	Ivory Coast	17	NA	NA	NA
Austria	2	NA	2	2	Czechoslovakia	5	1	1	NA	Jamaica	129	138	124	122
Azerbaijan	1	1	3	1	Denmark	1	3	4	1	Japan	35	38	37	30
Bahamas	13	14	7	13	Djibouti	2	NA	NA	NA	Jordan	3	2	5	6
Bahrain	3	3	1	2	Dominica	9	3	4	7	Kazakhstan	1	NA	1	3
Bangladesh	32	32	25	29	Dominican Republic	11	10	10	7	Kenya	22	25	35	37
Barbados	3	6	5	4	Ecuador	8	10	14	14	Kiribati	1	1	1	1
Belarus	6	7	8	5	Egypt	3	4	5	6	Korea, DPR	3	1	NA	NA
Belgium	2	NA	NA	1	El Salvador	13	10	9	13	Korea, R	227	229	262	288
Belize	3	1	1	1	Eritrea	13	17	15	10	Kuwait	3	1	2	2
Benin	2	2	2	NA	Estonia	3	2	NA	1	Kyrgyzstan	NA	NA	1	1
Bermuda	4	7	6	5	Ethiopia	169	208	232	232	Laos	8	7	10	7
Bolivia	4	3	5	4	France	17	18	17	16	Latvia	NA	2	3	4
Bosnia/Herzeg	68	86	96	100	Gabon	NA	NA	NA	1	Lebanon	6	5	7	5
Botswana	2	NA	NA	1	Gambia	6	5	5	5	Liberia	30	41	45	48
Brazil	39	47	47	48	Georgia	1	2	1	2	Liechtenstein	NA	NA	1	1
British Virgin Islands	1	1	NA	NA	Germany	2	18	17	17	Lithuania	7	6	6	6
Bulgaria	24	20	19	17	Ghana	40	45	56	59	Madagascar	NA	NA	NA	1
Burkina Faso	2	1	2	1	Greece	1	3	3	NA	Malawi	1	NA	NA	NA
Burma	11	8	6	2	Grenada	NA	1	1	3	Malaysia	13	17	17	12
Burundi	1	2	3	3	Guatemala	6	7	9	13	Mali	2	7	9	5
Cambodia	7	8	8	8	Guinea	7	5	11	16	Malta	1	1	NA	NA
Cameroon	52	52	47	36	Guyana	26	32	28	30	Mauritania	NA	NA	1	NA
Canada	53	58	66	52	Haiti	42	45	44	53	Mauritius	2	1	1	1
Central Africa	1	NA	1	1	Honduras	11	12	9	6	Mexico	66	74	97	130
Chad	NA	1	1	2	Hong Kong	15	13	12	9	Moldova	1	3	7	12
Chile	5	4	4	7	Hungary	4	7	7	3	Mongolia	NA	NA	NA	NA

# International Student Enrollment II, Fall 2003-2006

Country	03	04	05	06	Country	03	04	05	06	Country	03	04	05	06
Morocco	9	6	6	5	Serbia	1	1	1	5	Tunisia	3	NA	NA	1
Mozambique	1	1	NA	NA	Sierra Leone	25	29	24	23	Turkey	9	12	12	13
Nepal	3	5	4	7	Singapore	NA	NA	NA	2	Turkmenistan	1	1	NA	NA
Netherlands	3	3	3	2	Slovakia	2	3	3	2	Turks & Caicos Islands	1	NA	NA	NA
Netherlands Ant	2	NA	NA	NA	Somalia	67	57	58	57	Uganda	NA	2	3	4
New Zealand	NA	NA	1	1	South Africa	21	22	24	19	Ukraine	13	16	20	25
Nicaragua	7	7	8	5	Spain	5	4	2	1	United Arab Emirates	NA	NA	2	2
Niger	2	4	4	3	Sri Lanka	3	3	2	2	United Kingdom	46	41	44	47
Nigeria	182	206	181	173	St. Kitts & Nevis	4	NA	3	2	Uruguay	3	2	2	5
Niue	NA	NA	NA	NA	St. Lucia	2	NA	2	2	Uzbekistan	4	6	4	4
Norway	2	1	NA	1	St. Vincent	1	NA	3	2	Venezuela	30	25	41	47
Pakistan	76	77	83	86	Sudan	23	35	42	42	Vietnam	324	290	274	236
Panama	9	12	7	6	Suriname	NA	2	1	NA	Yemen	7	NA	1	1
Paraguay	1	NA	NA	NA	Swaziland	4	3	2	NA	Yugoslavia	NA	8	5	NA
Peru	25	31	34	38	Sweden	7	3	4	8	Zambia	5	7	8	10
Philippines	27	35	33	29	Switzerland	NA	2	2	2	Zimbabwe	11	7	8	13
Poland	26	36	35	37	Syria	7	6	6	7					
Portugal	2	3	3	1	Taiwan	42	38	28	28					
Romania	40	46	65	63	Tajikistan	NA	1	NA	NA					
Russia	37	38	39	34	Tanzania	4	2	3	9					
Rwanda	3	4	7	3	Thailand	21	22	24	21	<b>Total Students</b>	<b>3,145</b>	<b>3,324</b>	<b>3,465</b>	<b>3,417</b>
Saudi Arabia	7	3	2	5	Togo	1	8	14	16	<b>Total Countries</b>	<b>147</b>	<b>146</b>	<b>145</b>	<b>144</b>
Senegal	14	9	7	7	Trinidad/Tobago	33	34	38	35	<b>or Regions</b>				

**FALL 2006**  
Countries with 100 or Greater Student Enrollment

<ol style="list-style-type: none"> <li>1. <b>Korea, Republic of (South): 288</b></li> <li>2. <b>Vietnam: 236</b></li> <li>3. <b>Ethiopia: 232</b></li> <li>4. <b>India: 191</b></li> </ol>	<ol style="list-style-type: none"> <li>5. <b>Nigeria: 173</b></li> <li>6. <b>Mexico: 130</b></li> <li>7. <b>Jamaica: 122</b></li> <li>8. <b>Colombia: 113</b></li> <li>9. <b>Bosnia/Herzeg: 100</b></li> </ol>
--	--

## Retention, Graduation, & Transfer Rates, Fall 2003 Cohort

First-Year Retention Rate, Fall 2004						
Institution	First-Time, Full-Time Freshmen			All First-Time Freshmen		
	Total Freshmen	Institution-Specific Rate	System-Wide Rate	Total Freshmen	Institution-Specific Rate	System-Wide Rate
GPC	2,158	68.77%	72.94%	3,244	63.81%	67.29%
Two-Year College Total	8,900	63.31%	69.37%	11,609	60.35%	65.73%
System Total	35,020	75.20%	80.81%	13,333	60.37%	65.59%

Second -Year Retention Rate, Fall 2005						
Institution	First-Time, Full-Time Freshmen			All First-Time Freshmen		
	Total Freshmen	No. Retained	Institution-Specific Rate	Total Freshmen	No. Retained	Institution-Specific Rate
GPC	2,157	905	41.96%	3,244	1,264	38.96%

Third-Year Associate Degree Graduation Rate, Fall 2006						
Institution	First-Time, Full-Time Freshmen			All First-Time Freshmen		
	Total Freshmen	No. Graduated	Institution-Specific Rate	Total Freshmen	No. Graduated	Institution-Specific Rate
GPC	2,157	210	9.74%	3,244	123	3.8%

Transfer Rate to a Four-Year USG Institution by Fall 2006			
Institution	First-Time, Full-Time Freshmen		
	Total Freshmen	No. Transferred	Institution-Specific Rate
GPC	2,157	374	17.34%

**\*Note:** This information complies with the Student Right to Know Act.

Source: Office of Strategic Research and Analysis website, [http://www.usg.edu/sra/students/cir/ch\\_reports/](http://www.usg.edu/sra/students/cir/ch_reports/), University System of Georgia, and USG by the Numbers Data Mart, <http://info.usg.edu>

## Retention Rates, Fall 2004 Cohort

First-Year Retention Rate, Fall 2005						
Institution	First-Time, Full-Time Freshmen			All First-Time Freshmen		
	Total Freshmen	Institution-Specific Rate	System-Wide Rate	Total Freshmen	Institution-Specific Rate	System-Wide Rate
GPC	2,649	64.3%	68.6%	3,791	59.9%	63.0%
Two-Year College Total	8,460	61.0%	67.3%	11,414	56.8%	62.2%
System Total	35,765	73.4%	79.4%	40,775	70.4%	75.8%

Second -Year Retention Rate, Fall 2006						
Institution	First-Time, Full-Time Freshmen			All First-Time Freshmen		
	Total Freshmen	No. Retained	Institution-Specific Rate	Total Freshmen	No. Retained	Institution-Specific Rate
GPC	2,648	965	36.4%	3,791	1,325	35.0%

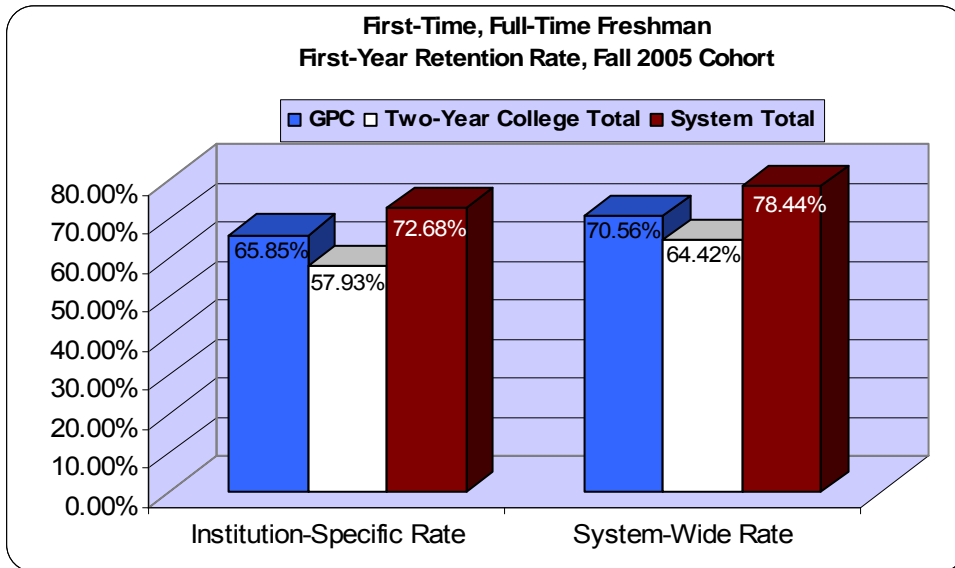
**\*Note:** This information complies with the Student Right to Know Act.

# Retention Rate, Fall 2005 Cohort; Enrollment by Class Size, FY 2001-07

First-Year Retention Rate, Fall 2006						
Institution	First-Time, Full-Time Freshmen			All First-Time Freshmen		
	Total Freshmen	Institution-Specific Rate	System-Wide Rate	Total Freshmen	Institution-Specific Rate	System-Wide Rate
GPC	2,612	65.9%	70.6%	3,866	60.84%	64.41%
Two-Year College Total	6,380	57.9%	64.4%	9,141	54.15%	59.18%
System Total	37,883	72.68%	78.4%	43,167	69.33%	74.62%

Source: Board of Regents, Graduation and Retention Report ([http://www.usg.edu/sra/students/grad\\_ret/retention.shtml](http://www.usg.edu/sra/students/grad_ret/retention.shtml))  
 Board of Regents, USG by the Numbers, Retention Rates by Institution Report (<http://info.usg.edu/>)

Enrollment Percentage by Class Size, FY 2001-2007							
Class Size	FY 01	FY 02	FY 03	FY04	FY05	FY06	FY07
1-10 students	13.5%	7.5%	11.5%	9.2%	12.1%	12.0%	11.5%
11-20 students	21.7%	32.9%	29.8%	31.0%	34.3%	35.7%	32.5%
21-30 students	40.3%	41.5%	41.8%	42.8%	39.5%	39.7%	42.0%
31-40 students	18.1%	15.7%	14.7%	14.8%	12.4%	11.2%	12.6%
41-50 students	5.0%	1.3%	1.4%	1.4%	1.0%	0.9%	0.8%
Over 50 students	1.4%	1.1%	1.0%	0.8%	0.7%	0.5%	0.5%



Source: Office of Institutional Research and Planning

### AT A GLANCE

- Among the 11 two-year institutions in the USGA system, GPC ranks second in institution specific retention (65.9%).

\*Note: This information complies with the Student Right to Know Act.

## Student Financial Aid Awarded by Source, FY 2003-2007

Awards	FY 2003		FY 2004		FY 2005		FY 2006		FY 2007	
	Student #	\$ Amount	Student #	\$ Amount	Student #	\$ Amount	Student #	\$ Amount	Student #	\$ Amount
<b>GRANTS</b>										
Pell	6,195	12,813,372	7,028	14,224,888	7,113	14,416,500	7,108	14,529,272	6,615	13,279,355
SEOG	1,046	330,008	1,436	420,250	1,477	548,667	1,332	522,816	1,173	488,700
LEAP	NA	NA	221	59,906	213	74,624	151	68,383	133	68,383
HOPE	5,538	7,101,087	5,833	7,872,325	6,674	8,862,612	6,275	8,887,240	5,257	7,391,729
<b>LOANS</b>										
Institutional	0	0	0	0	123	43,522	93	33,446	94	42,361
Private	N/A	N/A	26	82,066	44	169,115	61	240,584	65	254,779
PLUS	0	0	11	37,654	35	131,709	47	194,314	66	153,791
Subsidized	2,829	5,875,600	3,338	6,834,070	2,980	6,101,677	2,632	5,420,735	3,023	5,201,822
Unsubsidized	1,838	4,398,974	2,556	6,047,013	2,517	7,283,224	2,357	6,903,936	2,632	5,843,021
<b>SCHOLARSHIPS</b>										
Institutional	315	327,825	193	207,787	348	522,987	448	586,973	502	596,903
Other**	205	190,963	363	219,296	363	219,296	363	219,296	396	310,916.52
<b>STUDENT EMPLOYMENT</b>										
College Work Study	158	289,028	210	386,591	207	386,843	203	357,771	178	246,206
<b>TOTAL AWARDED*</b>	18,124	31,326,857	21,189	36,309,780	22,094	38,760,776	21,070	37,964,766	19,738	33,567,050

\*"Total Awarded" numbers are duplicated student count.

\*\*Total Awarded for FY 2007 is *unofficial* because Student Accounts Department supplies the **Other** figures for Scholarships.

# Entering Freshman SAT, Fall 2002-2006; Regents' Test, Spring 2007

Average Composite Scores, Entering Freshmen, Fall 2002 – 2006					
	2002	2003	2004	2005	2006
Georgia Perimeter College	889	902	910	N/A	N/A
Two-year College Totals	888	898	904	N/A	N/A
University System of Georgia	1,030	1,036	1,042	N/A	N/A

- Note:**
1. This table includes only those freshmen who attempted at least five quarter credit hours by Spring quarter for cohorts through 1996 or three semester hours for FY 1999 on and after.
  2. The composite score is derived by summing the SAT verbal score and the SAT math score. The possible range for SATV and SATM is 200 to 800; the possible composite score range is 400 to 1600.
  3. Included are students with missing data on SAT, such as students with GEDs, those admitted into programs that do not require SAT scores, and those who were admitted based on ACT scores.
  4. SAT scores are no longer a requirement for admission beginning with the Fall 2006 term.

**Source:** Office of Strategic Research and Analysis website ([www.usg.edu/sra](http://www.usg.edu/sra)), University System of Georgia, Atlanta, Georgia.

	First-Timer**				Repeater**			
	Reading		Essay		Reading		Essay	
	No.	% Pass	No.	% Pass	No.	% Pass	No.	% Pass
Georgia Perimeter College	1,207	69.84	1,514	80.52	481	41.37	323	62.54
Two-Year Colleges	2,274	68.69	2,668	81.52	876	39.04	488	61.68
System Total*	9,356	73.76	12,607	86.18	3,195	42.66	1,765	67.14

Source: Regent's Testing Program Reports, <http://www2.gsu.edu/~wwwrtp/>

**Note:** \* "System Total" numbers are generated based on all USG institutions, including all research universities, regional universities, state universities and colleges, and two-year colleges. The numbers for the two-year college group are not available.

\*\* The BOR Repeater report is in a different data format from the First-Timer format. The data formats reported in this table are following the BOR formats.

**Source:** Regents' Testing Program Passing Rates for Examinees Repeating the Test Spring Semester 2006. Office of Strategic Research and Analysis, University System of Georgia, Atlanta.

# Applications Received, Fall 2002-06; Testing Activities, FY 2002-06

Applications Received, Fall 2002-2006										
Applications Received	2002		2003		2004		2005		2006	
	#	%	#	%	#	%	#	%	#	%
Total App. Received	18,549	100	18,543	100	18,419	100	20,671	100	21,088	100
Completed Files	10,998	59	10,823	58	11,750	64	12,388	60	12,095	57
Completed – Registered	6,599	36	5,926	31	7,174	39	7,333	35	6,589	31
Completed – Unregistered	4,399	24	4,897	26	4,576	25	5,055	24	5,506	26
Incomplete Files	7,551	41	7,720	41	6,669	36	8,283	40	8,993	43

Testing Activities, FY 2002-06					
Tests Administered	2002	2003	2004	2005	2006
ACT	152	347	214	536	438
Alternate Regents'	520	388	*	298	528
BSE/CPE-Exit	54	3	78	12	12
BSE/CPE-Placement	146	16	8	37	0
CLEP	58	273	393	423	253
COMPASS	12,627	13,490	15,313	15,390	17,844
Dental Hygiene Board	22	27	31	40	38
English as a Second Language Placement (ENSL)	1,141	1,192	1,352	1,657	1395
Independent Study	25	262	452	525	478
Institutional SAT	1,494	1,161	588	45	0
Regents' Test	7,875	10,810	10,776	9,620	5,573
SAT I and II Assessment Tests	845	1,201	1,045	1,496	1,656
English as a Foreign Language (TOEFL)	868	894	1,118	426	0
Distance Learning/Web CT					4,257
Residual ACT	25	4	113	25	0
<b>Total</b>	<b>25,852</b>	<b>30,068</b>	<b>28,134</b>	<b>30,505</b>	<b>52,980</b>

\* Note: The changes below have been made to the reporting format of Regents' Testing Data.

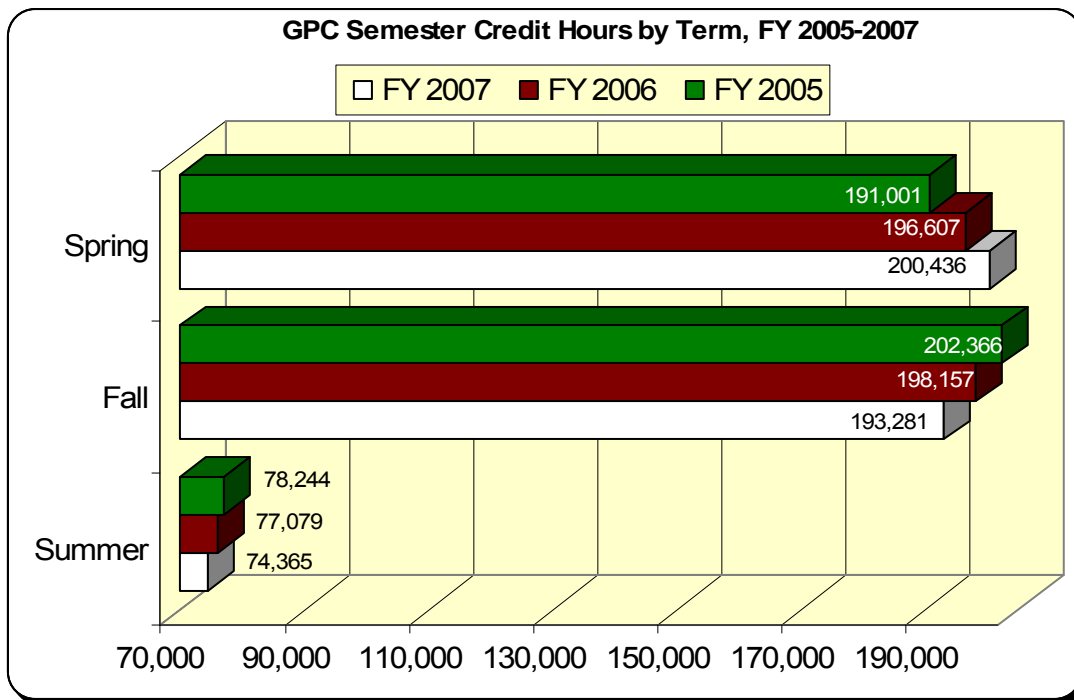
Distance Learning and Web CT statistics added Fall 2006. These testing sessions represented a significant part of the testing activities for FY07. College Board refers to new SAT and the SAT Reasoning and Subject Tests.

Also, please be aware that the college no longer maintains an institutional testing program, resulting in fewer test administrations of the Institutional TOEFL (I-TOEFL) and the Institutional SAT (I-SAT). Specifically, the I-TOEFL was discontinued as of Fall 2005 and the I-SAT was discontinued in October 2005. As such, fewer total students are recorded.

\*\*Note: Georgia Perimeter College re-instituted the Alternate Regents version in Spring 2006 for non-native Speaking Students. The Alternate Regents test consists of the Essay Test only. If an ESL student passes the Essay with a score of 2 or better, that ESL student has also met the Regents' Requirement for Reading

# Semester Credit Hour Report, GPC & USG FY 2005-2007

	FY 2005			FY 2006			FY 2007		
	Summer	Fall	Spring	Summer	Fall	Spring	Summer	Fall	Spring
Georgia Perimeter College	77,079	202,366	191,001	76,013	198,157	196,607	74,365	193,281	200,436
USG Two-year Colleges	192,803	553,595	521,289	189,000	502,008	485,843	170,864	505,289	393,217
USG Grand Totals	891,212	2,886,888	2,732,620	874,063	2,956,408	2,801,085	895,645	3,045,775	2,920,524

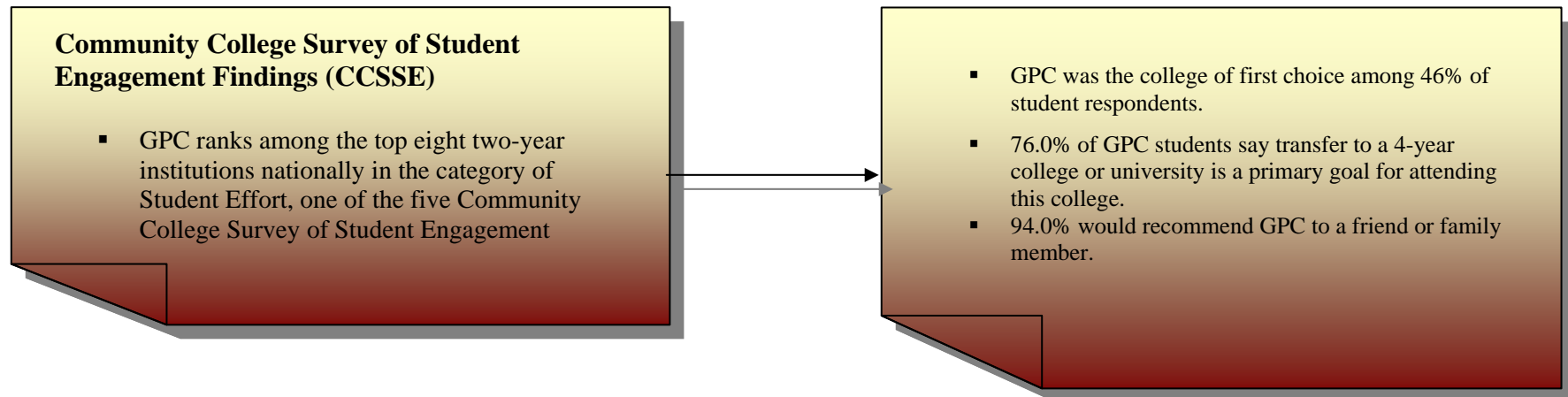


### At a Glance

- In FY 2006, GPC ranked 4<sup>th</sup> among USG institutions for total semester credit hours.
- In Fall 2006, 39.0% of 2-year college semester credit hours in the USG were attributed to GPC.

## Comparison with Other USG Two-Year Colleges, Fall 2006

Institution	Headcount Enrollment	FTE	Non-White %	Female %	GA Residents %	Freshmen %	New Freshmen %
Abraham Baldwin Agricultural College	3,574	3,114	21.2	54.9	96.5	60.5	36.5
Atlanta Metropolitan College	1,683	1,299	99.7	65.3	92.6	67.5	25.1
Bainbridge College	2,783	2,085	57.1	72.4	98.9	55.6	20.7
Coastal Georgia Community College	3,054	2,175	33.4	67.4	94.3	58.6	24.6
Darton College	4,679	3,357	47.1	71.2	96.7	59.2	23.9
East Georgia College	1,719	1,524	35.1	59.7	99.1	79.1	42.3
Georgia Highlands College (formerly Floyd College)	3,933	3,214	17.6	64.1	97.4	65.4	31.6
<b>Georgia Perimeter College</b>	<b>19,955</b>	<b>14,964</b>	<b>58.5</b>	<b>61.7</b>	<b>93.5</b>	<b>59.3</b>	<b>21.6</b>
Gordon College	3,596	3,091	39.4	64.3	98.4	69.5	37.5
Middle Georgia College	3,051	2,576	40.2	58.0	97.9	68.1	38.1
South Georgia College	1,465	1,291	31.2	63.0	97.3	66.3	37.5
Waycross College	1,018	714	26.6	71.1	97.6	50.4	22.2
<b>Two-Year Colleges Total</b>	<b>50,510</b>	<b>39,404</b>	<b>40.0</b>	<b>51.5</b>	<b>75.9</b>	<b>48.5</b>	<b>19.6</b>



# Athletics, 2006-2007

**Director of Athletics:** Greg N. Ward

**Colors:** Maroon, Gold

**Affiliation:** National Junior College Athletic Association

**Mascot:** Jaguars

**Conference:** Georgia Junior College Athletic Association

## RECENT ACCOMPLISHMENTS

### Baseball

**Head Coach:** Danny Blue

- The baseball team will play the 2008 season in Newton.

### Softball

**Head Coach:** Ed Schutte

**Assistant Coach:** Barbara Reed

- The lady jaguars won their 1<sup>st</sup> GJCAA conference tournament championship and earned 1<sup>st</sup> trip to NCAA
- Won 40 games – the most wins in programs history
- Head coach selected for the Wilson Select National Team.
- One player earned NCJAA

### Basketball (Men's)

**Head Coach:** Alfred Barney

**Assistant Coach:** David Dennis

- Won back-to-back conference tournament and District 10 championships.
- Earned 6<sup>th</sup> trip to National Tournament.
- Won eight of the last ten conference championships.

### Basketball (Women's)

**Head Coach:** James Waldon

**Assistant Coach:** Christina Shafer

**Assistant Coach:** Donald Moore, Jr.

- Won third consecutive GJCAA conference tournament and District 10 championships

- Earned third consecutive trip to NJCAA national tournament.
- Finished 2006- 2007 season undefeated in conference play. Currently holds 40 game conference winning streak.

### Soccer (Men's)

**Head Coach:** Marc Zagara

**Assistant Coach:** Ron Moore

- Finished 5<sup>th</sup> at the national championship tournament.
- Currently holds 39 game conference winning streak.
- Finished 2006-2007 season with a record of 20-2-1.
- Won 3<sup>rd</sup> consecutive GJCAA conference and SE District championships.
- Three players selected as NJCAA All Americans.

### Soccer (Women's)

**Head Coach:** Jessica Riggs

**Assistant Coach:** Franklin Lawson

**Assistant Coach:** Bruno Kalonji

- Advanced to the conference tournament semifinals
- Earned first playoff berth since 2003 season
- Three players were named to the GJCAA All-Region team.

### Tennis (Men's)

**Head Coach:** Mohamed Nait Omar

- Won three National Championships (1999, 2000, 2001).

### Tennis (Women's)

**Head Coach:** Elaine Bryan

- Finished 3<sup>rd</sup> in GJCAA conference.

# Retention & Graduation Rates for Athletes Receiving Scholarships Fall 2003 Cohort

Fall 2003 Cohort Retention & Graduation Rates									
First-Time, Full-Time Freshmen by Gender and Ethnicity									
Sport	Ethnicity	Gender	Total FT-FT Freshmen	No. Retained Fall 2004	Institution-Specific Rate	No. Retained Fall 2005	Institution-Specific Rate	No. Graduated by Fall 2006	Institution-Specific Rate
Baseball	Asian	Male	0	NA	NA	NA	NA	NA	NA
		Female	0	NA	NA	NA	NA	NA	NA
	Black	Male	0	NA	NA	NA	NA	NA	NA
		Female	0	NA	NA	NA	NA	NA	NA
	Hispanic	Male	0	NA	NA	NA	NA	NA	NA
		Female	0	NA	NA	NA	NA	NA	NA
	Multiracial	Male	0	NA	NA	NA	NA	NA	NA
		Female	0	NA	NA	NA	NA	NA	NA
	Native American	Male	0	NA	NA	NA	NA	NA	NA
		Female	0	NA	NA	NA	NA	NA	NA
	White	Male	9	9	100.0%	2	22.2%	0	0.0%
		Female	0	NA	NA	NA	NA	NA	NA
Basketball	Asian	Male	0	NA	NA	NA	NA	NA	NA
		Female	0	NA	NA	NA	NA	NA	NA
	Black	Male	4	3	75.0%	1	25.0%	1	25.0%
		Female	5	3	60.0%	0	0.00%	0	0.0%
	Hispanic	Male	0	NA	NA	NA	NA	NA	NA
		Female	0	NA	NA	NA	NA	NA	NA
	Multiracial	Male	0	NA	NA	NA	NA	NA	NA
		Female	0	NA	NA	NA	NA	NA	NA
	Native American	Male	0	NA	NA	NA	NA	NA	NA
		Female	0	NA	NA	NA	NA	NA	NA
	White	Male	0	NA	NA	NA	NA	NA	NA
		Female	0	NA	NA	NA	NA	NA	NA

**\*Note: This information complies with the Student Right to Know Act.**

Source: Office of Institutional Research and Planning

# Retention & Graduation Rates for Athletes Receiving Scholarships Fall 2003 Cohort (cont.)

Fall 2003 Cohort Retention & Graduation Rates									
First-Time, Full-Time Freshmen by Gender and Ethnicity									
Sport	Ethnicity	Gender	Total FT-FT Freshmen	No. Retained Fall 2004	Institution-Specific Rate	No. Retained Fall 2005	Institution-Specific Rate	No. Graduated by Fall 2006	Institution-Specific Rate
Soccer	Asian	Male	0	NA	NA	NA	NA	NA	NA
		Female	0	NA	NA	NA	NA	NA	NA
	Black	Male	2	1	50.0%	0	0.0%	0	0.0%
		Female	1	1	100.0%	1	100.0%	1	100.0%
	Hispanic	Male	1	1	100.0%	0	0.0%	0	0.0%
		Female	0	NA	NA	NA	NA	NA	NA
	Multiracial	Male	1	1	100.0%	0	0.00%	0	0.00%
		Female	0	NA	NA	NA	NA	NA	NA
	Native American	Male	0	NA	NA	NA	NA	NA	NA
		Female	0	NA	NA	NA	NA	NA	NA
	White	Male	3	1	33.3%	0	0.0%	0	0.0%
		Female	2	2	100.0%	1	50.0%	0	0.0%
Softball	Asian	Male	0	NA	NA	NA	NA	NA	NA
		Female	0	NA	NA	NA	NA	NA	NA
	Black	Male	0	NA	NA	NA	NA	NA	NA
		Female	0	NA	NA	NA	NA	NA	NA
	Hispanic	Male	0	NA	NA	NA	NA	NA	NA
		Female	0	NA	NA	NA	NA	NA	NA
	Multiracial	Male	0	NA	NA	NA	NA	NA	NA
		Female	1	1	100.0%	0	0.0%	0	0.0%
	Native American	Male	0	NA	NA	NA	NA	NA	NA
		Female	0	NA	NA	NA	NA	NA	NA
	White	Male	0	NA	NA	NA	NA	NA	NA
		Female	5	3	60.0%	0	0.0%	0	0.0%

**\*Note: This information complies with the Student Right to Know Act.**

Source: Office of Institutional Research and Planning

## Retention & Graduation Rates for Athletes Receiving Scholarships Fall 2003 Cohort (cont.)

Fall 2003 Cohort Retention & Graduation Rates									
First-Time, Full-Time Freshmen by Gender and Ethnicity									
Sport	Ethnicity	Gender	Total FT-FT Freshmen	No. Retained Fall 2004	Institution-Specific Rate	No. Retained Fall 2005	Institution-Specific Rate	No. Graduated by Fall 2006	Institution-Specific Rate
Tennis	Asian	Male	0	NA	NA	NA	NA	NA	NA
		Female	0	NA	NA	NA	NA	NA	NA
	Black	Male	0	NA	NA	NA	NA	NA	NA
		Female	0	NA	NA	NA	NA	NA	NA
	Hispanic	Male	0	NA	NA	NA	NA	NA	NA
		Female	0	NA	NA	NA	NA	NA	NA
	Multiracial	Male	0	NA	NA	NA	NA	NA	NA
		Female	0	NA	NA	NA	NA	NA	NA
	Native American	Male	0	NA	NA	NA	NA	NA	NA
		Female	0	NA	NA	NA	NA	NA	NA
	White	Male	0	NA	NA	NA	NA	NA	NA
		Female	1	1	100.0%	0	0.0%	0	0.0%
<b>Totals</b>			<b>35</b>	<b>27</b>	<b>77.1%</b>	<b>5</b>	<b>14.3%</b>	<b>2</b>	<b>5.7%</b>

**\*Note: This information complies with the Student Right to Know Act.**

Source: Office of Institutional Research and Planning

# Retention & Graduation Rates for Athletes Receiving Scholarships Fall 2004 Cohort

Fall 2004 Cohort Retention & Graduation Rates							
First-Time, Full-Time Freshmen by Gender and Ethnicity							
Sport	Ethnicity	Gender	Total FT-FT Freshmen	No. Retained Fall 2005	Institution-Specific Rate	No. Retained Fall 2006	Institution-Specific Rate
Baseball	Asian	Male	0	NA	NA	NA	NA
		Female	0	NA	NA	NA	NA
	Black	Male	1	0	0.0%	0	0.0%
		Female	0	NA	NA	NA	NA
	Hispanic	Male	0	NA	NA	NA	NA
		Female	0	NA	NA	NA	NA
	Multiracial	Male	0	NA	NA	0	0.0%
		Female	0	NA	NA	NA	NA
	Native American	Male	0	NA	NA	NA	NA
		Female	0	NA	NA	NA	NA
	White	Male	7	6	85.7%	1	14.3%
		Female	0	NA	NA	NA	NA
Basketball	Asian	Male	0	NA	NA	NA	NA
		Female	0	NA	NA	NA	NA
	Black	Male	2	2	100.0%	1	50.0%
		Female	8	5	62.5%	1	12.5%
	Hispanic	Male	0	NA	NA	NA	NA
		Female	0	NA	NA	NA	NA
	Multiracial	Male	1	0	0.0%	1	100.0%
		Female	0	NA	NA	NA	NA
	Native American	Male	0	NA	NA	NA	NA
		Female	0	NA	NA	NA	NA
	White	Male	0	NA	NA	NA	NA
		Female	0	NA	NA	NA	NA

**\*Note: This information complies with the Student Right to Know Act.**

Source: Office of Institutional Research and Planning

# Retention & Graduation Rates for Athletes Receiving Scholarships Fall 2004 Cohort (cont.)

Fall 2004 Cohort Retention & Graduation Rates							
First-Time, Full-Time Freshmen by Gender and Ethnicity							
Sport	Ethnicity	Gender	Total FT-FT Freshmen	No. Retained Fall 2005	Institution-Specific Rate	No. Retained Fall 2006	Institution-Specific Rate
Soccer	Asian	Male	0	NA	NA	NA	NA
		Female	0	NA	NA	NA	NA
	Black	Male	3	0	0	0	0.00%
		Female	0	NA	NA	NA	NA
	Hispanic	Male	4	4	100.0%	2	50.0%
		Female	1	1	100.0%	0	0.0%
	Multiracial	Male	0	NA	NA	NA	NA
		Female	3	3	100.0%	2	66.7%
	Native American	Male	0	NA	NA	NA	NA
		Female	0	NA	NA	NA	NA
	White	Male	0	NA	NA	NA	NA
		Female	1	1	100.0%	0	0.0%
Softball	Asian	Male	0	NA	NA	NA	NA
		Female	0	NA	NA	NA	NA
	Black	Male	0	NA	NA	NA	NA
		Female	0	NA	NA	NA	NA
	Hispanic	Male	0	NA	NA	NA	NA
		Female	0	NA	NA	NA	NA
	Multiracial	Male	0	NA	NA	NA	NA
		Female	2	2	100.0%	0	0.0%
	Native American	Male	0	NA	NA	NA	NA
		Female	0	NA	NA	NA	NA
	White	Male	0	NA	NA	NA	NA
		Female	7	6	85.7%	1	14.3%

**\*Note: This information complies with the Student Right to Know Act.**

Source: Office of Institutional Research and Planning

## Retention & Graduation Rates for Athletes Receiving Scholarships Fall 2004 Cohort (cont.)

Fall 2004 Cohort Retention & Graduation Rates							
First-Time, Full-Time Freshmen by Gender and Ethnicity							
Sport	Ethnicity	Gender	Total FT-FT Freshmen	No. Retained Fall 2005	Institution-Specific Rate	No. Retained Fall 2006	Institution-Specific Rate
Tennis	Asian	Male	0	NA	NA	NA	NA
		Female	0	NA	NA	NA	NA
	Black	Male	0	NA	NA	NA	NA
		Female	0	NA	NA	NA	NA
	Hispanic	Male	0	NA	NA	NA	NA
		Female	0	NA	NA	NA	NA
	Multiracial	Male	0	NA	NA	NA	NA
		Female	0	NA	NA	NA	NA
	Native American	Male	0	NA	NA	NA	NA
		Female	0	NA	NA	NA	NA
	White	Male	1	0	0.00%	0	0.00%
		Female	0	NA	NA	NA	NA
<b>Totals</b>			<b>41</b>	<b>30</b>	<b>73.2%</b>	<b>9</b>	<b>22.0%</b>

**\*Note: This information complies with the Student Right to Know Act.**

Source: Office of Institutional Research and Planning

# Retention & Graduation Rates for Athletes Receiving Scholarships Fall 2005 Cohort

Fall 2005 Cohort Retention & Graduation Rates					
First-Time, Full-Time Freshmen by Gender and Ethnicity					
Sport	Ethnicity	Gender	Total FT-FT Freshmen	No. Retained Fall 2006	Institution-Specific Rate
Baseball	Asian	Male	0	NA	NA
		Female	0	NA	NA
	Black	Male	0	NA	NA
		Female	0	NA	NA
	Hispanic	Male	0	NA	NA
		Female	0	NA	NA
	Multiracial	Male	0	NA	NA
		Female	0	NA	NA
	Native American	Male	0	NA	NA
		Female	0	NA	NA
	White	Male	3	1	33.3%
		Female	1	1	100.0%
Basketball	Asian	Male	0	NA	NA
		Female	0	NA	NA
	Black	Male	9	6	66.7%
		Female	5	4	80.0%
	Hispanic	Male	0	NA	NA
		Female	0	NA	NA
	Multiracial	Male	0	NA	NA
		Female	0	NA	NA
	Native American	Male	0	NA	NA
		Female	1	1	100.0%
	White	Male	0	NA	NA
		Female	0	NA	NA

**\*Note: This information complies with the Student Right to Know Act.**

Source: Office of Institutional Research and Planning

## Retention & Graduation Rates for Athletes Receiving Scholarships Fall 2005 Cohort (cont.)

Fall 2005 Cohort Retention & Graduation Rates					
First-Time, Full-Time Freshmen by Gender and Ethnicity					
Sport	Ethnicity	Gender	Total FT-FT Freshmen	No. Retained Fall 2006	Institution-Specific Rate
Soccer	Asian	Male	0	NA	NA
		Female	0	NA	NA
	Black	Male	1	1	100.0%
		Female	0	NA	NA
	Hispanic	Male	3	2	66.7%
		Female	1	0	0.0%
	Multiracial	Male	1	1	100.0%
		Female	0	NA	NA
	Native American	Male	0	NA	NA
		Female	0	NA	NA
	White	Male	1	0	0.0%
		Female	0	NA	NA
Softball	Asian	Male	0	NA	NA
		Female	0	NA	NA
	Black	Male	0	NA	NA
		Female	0	NA	NA
	Hispanic	Male	0	NA	NA
		Female	0	NA	NA
	Multiracial	Male	0	NA	NA
		Female	1	1	100.0%
	Native American	Male	0	NA	NA
		Female	0	NA	NA
	White	Male	0	NA	NA
		Female	7	6	85.7%

**\*Note: This information complies with the Student Right to Know Act.**

Source: Office of Institutional Research and Planning

## Retention & Graduation Rates for Athletes Receiving Scholarships Fall 2005 Cohort (cont.)

Fall 2005 Cohort Retention & Graduation Rates					
First-Time, Full-Time Freshmen by Gender and Ethnicity					
Sport	Ethnicity	Gender	Total FT-FT Freshmen	No. Retained Fall 2006	Institution-Specific Rate
Tennis	Asian	Male	0	NA	NA
		Female	0	NA	NA
	Black	Male	1	0	0.0%
		Female	0	NA	NA
	Hispanic	Male	0	NA	NA
		Female	0	NA	NA
	Multiracial	Male	0	NA	NA
		Female	0	NA	NA
	Native American	Male	0	NA	NA
		Female	0	NA	NA
	White	Male	0	0	0.0%
		Female	1	1	100.0%
<b>Totals</b>			<b>36</b>	<b>25</b>	<b>69.4%</b>

**\*Note: This information complies with the Student Right to Know Act.**

*Source: Office of Institutional Research and Planning*

## Students with Disabilities, from 2002 - 2007

	02-03	03-04	04-05	05-06	06-07
Visual	10	17	18	15	16
Deaf/Hard of Hearing	23	25	23	13	23
Brain Injury	16	22	19	22	21
Motor/Mobility	15	18	14	21	34
Psychological/Psychiatric	24	39	42	32	44
Learning Disability	89	97	80	81	78
Attention Deficit Hyperactivity Disorder (ADHD)	53	54	52	59	59
Both LD/ADHD	16	26	20	30	15
Chronic Illness/Medical	21	30	33	38	39
Multiple Disabilities	15	4	12	17	30
Asperger's (ASD) *					16
Other	0	6	15	17	3
<b>TOTAL</b>	<b>300</b>	<b>338</b>	<b>328</b>	<b>345</b>	<b>378</b>

**Source:** Georgia Perimeter College Office of Disability Services, as reported to Board of Regents of the University System of Georgia.

**Note:** Reporting year begins in Summer and ends with Spring semester. Table shows number of students for whom accommodations or services were provided.

\*Asperger's Syndrome normally reported under Psychological/Psychiatric disorders reported separately for FY07.

# Georgia Perimeter College



## 2006-2007 FACTBOOK

Organization

Academics

Students

Funding & Facilities

Employees



# Student Tuition and Fees, FY 2008

<b>Tuition (per hour)</b>	
In-State	\$73.00
Out-of-State	\$292.00
Distance Learning	\$99.00
<b>Required Fees</b>	
Admission Application	\$20.00
Athletic Fee	\$27.00
Student Support Service (Per Credit Hour- Max. \$120.00)	\$10.00
Student Activity	\$45.00
Technology	\$50.00
<b>Special Fees</b>	
Applied Music (per hour)	\$50.00
Dental Hygiene Lab/Insurance	\$65.00
Critical Languages	\$30.00
Late Registration Fee	\$50.00
Nursing Lab/Insurance	\$156.00
Science Lab	\$30.00
International Student Health Insurance (F1 Visa only)	\$472.00

## Tuition and Fees

Georgia Perimeter College students are responsible for tuition and fees which are set each year. Fees include student activity, student support service, technology, athletic, and other special fees. Tuition and fees are due each semester at the time of registration. Registration is not complete until all fees are paid. Payment may be in

cash, by check payable in U.S. currency, or with a Visa or Mastercard, American Express or Discover. The College will withhold copies of transcripts and other student records and/or revoke the enrollment of students who owe the College money. Fees and expenses are subject to change without notice.

Most fees are assessed for on-campus students only. Instruction delivered at Clarkston, Lawrenceville, Dunwoody, Decatur and Newton is considered on-campus. Instruction by distance education and courses at other locations are considered off-campus.

The precise amount of a student's fees for a semester depends upon a number of factors:

- The number of courses taken
- The nature of the courses
- The location at which the courses are taught
- The number of credit hours assigned to the courses
- The residence status of the student

It is the responsibility of the student to be informed of and observe all regulations and procedures regarding the payment of fees and the entitlement of refunds.

## Revenues and Expenditures Per Student, FY 2003-2007

<b>Revenues</b>	<b>FY03</b>	<b>FY04</b>	<b>FY05</b>	<b>FY06</b>	<b>Budget FY 07</b>
Tuition and Fees	\$27,368,986	\$34,554,728*	\$34,354,750	\$36,793,184	\$36,786,567
State/Local Appropriations	47,783,503	49,797,569	57,229,687	64,422,543	59,392,062
Other Income	1,657,943	354,645	1,234,060	1,284,060	2,850,000
Departmental Sales & Services	2,468,006	1,915,873	3,200,000	2,786,000	2,700,000
Sponsored Operations	14,927,507	16,964,971	17,500,000	17,500,000	17,500,000
<b>Total Revenues</b>	<b>\$94,205,945</b>	<b>\$103,587,785</b>	<b>\$113,518,497</b>	<b>\$122,785,787</b>	<b>\$119,228,629</b>
<b>Expenditure Per Student</b>	<b>FY03</b>	<b>FY04</b>	<b>FY05</b>	<b>FY06</b>	<b>FY07</b>
EFT Students	13,225	14,242	15,395	15,327	15,693
Expenditure per EFT Student (excluding sponsored)	5,993	6,080	6,237	6,869	6,482

\* In FY04, the college changed the reporting of revenue to comply with GASB35 governmental accounting standards.

## Budget Allocations, FY 2003-2007

<b>Allocations</b>	<b>FY03</b>	<b>FY04</b>	<b>FY05</b>	<b>FY06</b>	<b>FY07 Budget</b>
Instruction	\$39,943,494	\$44,546,352	\$44,567,967	\$49,905,541	\$47,800,201
Public Service	20,743	848	1,000	1,000	1,000
Academic Support	7,479,820	8,272,522	10,838,115	11,383,090	9,972,370
Student Services	6,404,072	7,277,684	9,445,717	10,385,673	10,848,894
Institutional Support	14,203,607	16,100,005	17,871,006	19,958,734	19,443,233
Plant Operations	8,862,533	8,491,529	10,094,692	10,865,749	10,962,931
Departmental Sales & Services	2,348,358	1,889,818	3,200,000	2,786,000	2,700,000
Sponsored Operations	14,915,818	16,422,069	17,500,000	17,500,000	17,500,000
<b>Total Allocations</b>	<b>\$94,178,445</b>	<b>\$103,018,828</b>	<b>\$113,518,497</b>	<b>\$122,785,787</b>	<b>\$119,228,629</b>

## Library Collections, FY 2001-2006

Library Collections	FY01	FY02	FY03	FY04	FY05	FY06
<b>Holdings</b>						
Paper Volumes	232,246	216,359	220,520	230,645	239,288	248,083
Paper Titles	179,449	157,666	171,816	NA	NA	NA
Serial Subscriptions	1,681	1,303	1,062	1,013	1,018	1,013
Number of Microforms	38,073	34,618	35,270	35,330	37,611	31,114
Electronic Titles	NA	NA	NA	NA	NA	NA
<b>Expenditures</b>						
Materials: Paper & Microforms	\$255,609	\$274,242	\$203,152	\$157,799	\$267,044	\$241,472
Current Serial: Paper & Microforms	\$154,263	\$155,647	\$119,848	\$155,208	\$104,996	\$89,849
Audio-Visual Materials	\$33,034	\$24,494	\$22,712	\$23,720	\$35,930	\$60,843
<b>Circulation</b>						
General Collection	47,214	54,278	63,245	53,295	67,623	67,806
Reserve Collection	6,525	8,788	13,351	16,712	17,838	15,241
<b>Interlibrary Loans</b>						
To Other Libraries	724	943	913	1,364	1,418	1,418
From Other Libraries	184	320	274	287	67	194

\* Data corrected for FY04 by source

## Buildings, Improvement & Renovations, FY 2007

Campus	Building	Improvement & Renovation Projects	Improvement & Renovation Costs
<b>Clarkston</b>		Building Entrance Renovation	\$252,807.00
	CN	Clarkston Campus Student Center, AV System	\$219,602.01
	CF	Restroom Renovations First Floor	\$ 124,900.00
	CJ	Renovate Protective Services Headquarters	\$ 314,997.00
	CH	Renovate Ground Floor	\$120,000.00
	CN	Student Center	\$8,250,000.00
<b>Decatur</b>	SA	Re-roofing of Building SA	\$356,998.13
	SB	Re-roofing of Building SB	\$362,580.00
	SA	Proposed office , Ground Floor-Phase 1	\$128,000.00
	SA	Proposed Renovations First Floor	\$166,000.00
<b>Dunwoody</b>	NB	Nursing Clinical Labs	\$196,000.00
	NA & ND	Propose Faculty & OIT Offices, 3 <sup>rd</sup> Floor Building NA and 2 <sup>nd</sup> Floor Building ND	\$208,630.00
		Dunwoody Campus Storage Building	\$148,831.00
<b>Lakeside Center</b>		Proposed alterations for OIT Leased Space	\$30,896.05
<b>Newton</b>		Audio Visual Systems for Newton	\$770,396.00
		Newton Campus	\$ 22,211,265.86

# Georgia Perimeter College



## 2006-2007 FACTBOOK

Organization

Academics

Students

Funding & Facilities

Employees

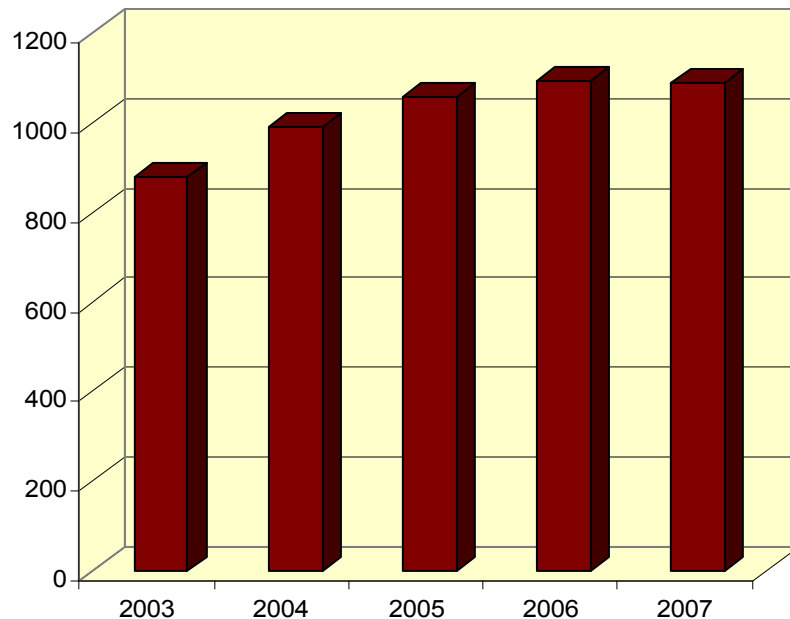


# Full-Time Employees by EEO Classification, FY 2003-2007

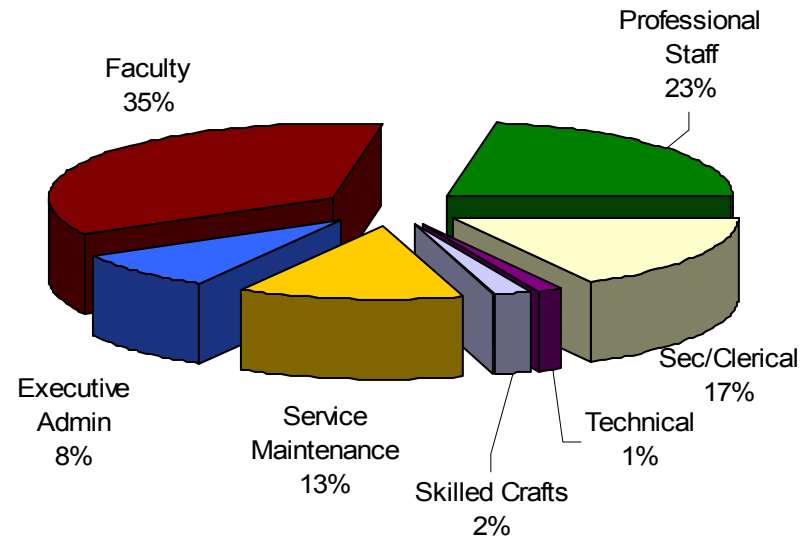
EEO Category	2003	2004	2005	2006	2007
Executive/Administrative/Managerial	119	81	87	90	94
Faculty	326	343	360	378	389
Professional Staff	101	237	266	271	246
Secretarial/Clerical	137	162	169	186	182
Technical/Paraprofessional	69	9	11	10	16
Skilled Crafts	31	24	26	26	25
Service Maintenance	96	135	138	132	138
<b>Totals</b>	<b>879</b>	<b>991</b>	<b>1,057</b>	<b>1,093</b>	<b>1,090</b>

Note: Noticeable differences between 2004 and the previous years are due largely to University System of Georgia classification changes.

Full-Time Employees, FY 2003 - 2007



Full-Time Employees by Classification, FY 2007



## Corps of Instruction – All Campuses, Fall 2006

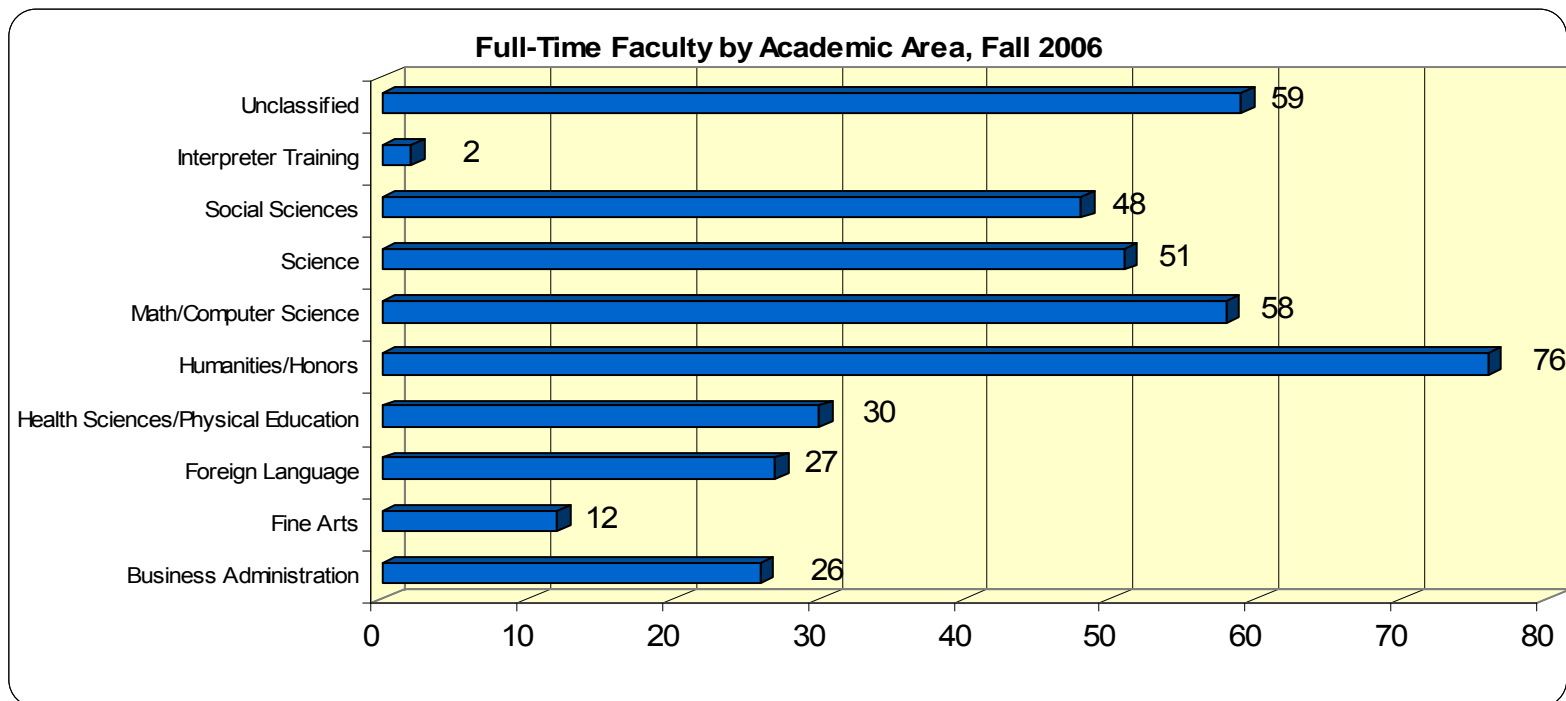
	Instructional Faculty	Library Faculty	Dept. Head/ Coor./Acad. Dir.	Deans Academic	Other Members of the Corps	Total
<b>Rank</b>						
Professor	32	0	7	2	0	41
Associate Professor	125	3	26	1	2	158
Assistant Professor	73	7	10	1	3	93
Instructor	159	10	7	0	9	185
Unranked	0	0	4	0	0	4
<b>Gender</b>						
Male	165	5	24	2	6	202
Female	224	15	30	2	8	279
<b>Race</b>						
Asian	16	0	0	0	1	17
Black	84	2	15	0	4	105
Hispanic	8	0	0	0	0	8
Native American	2	0	1	0	0	3
Multiracial	3	1	0	0	0	4
White	276	17	38	4	9	344
<b>Tenure</b>						
Tenured	178	0	36	4	2	220
On Track	102	0	7	0	3	112
Not Eligible*	109	20	11	0	9	149
<b>Highest Degree</b>						
Doctorate	113	3	21	4	1	142
Specialist	7	0	0	0	0	7
Master's	258	17	33	0	11	319
Bachelor's/Other	11	0	0	0	2	13
<b>Total</b>	<b>389</b>	<b>20</b>	<b>54</b>	<b>4</b>	<b>14</b>	<b>481</b>

\*Not eligible/not on track

# Highest Earned Degree, Full-Time Instructional Faculty, Fall 2006

Academic Area	Doctorate	Specialist	Master's	Others	Total
Business Administration	4	0	22	0	26
Fine Arts	1	1	10	0	12
Foreign Language	5	0	22	0	27
Health Sciences/Physical Education	2	1	27	0	30
Humanities/Honors	19	0	57	0	76
Math/Computer Science	11	3	42	2	58
Science	32	0	18	1	51
Social Sciences	29	1	18	0	48
Interpreter Training	0	0	0	2	2
Unclassified	14	1	42	2	59
<b>Total</b>	<b>117</b>	<b>7</b>	<b>258</b>	<b>7</b>	<b>389</b>
<b>* % of FT Faculty</b>	<b>30.1%</b>	<b>1.8%</b>	<b>66.3%</b>	<b>1.8%</b>	<b>100.1%</b>

\* Numbers may not sum to 100.0 percent due to rounding.



## Faculty Distribution by Rank and Ethnicity, Fall 2002-2006

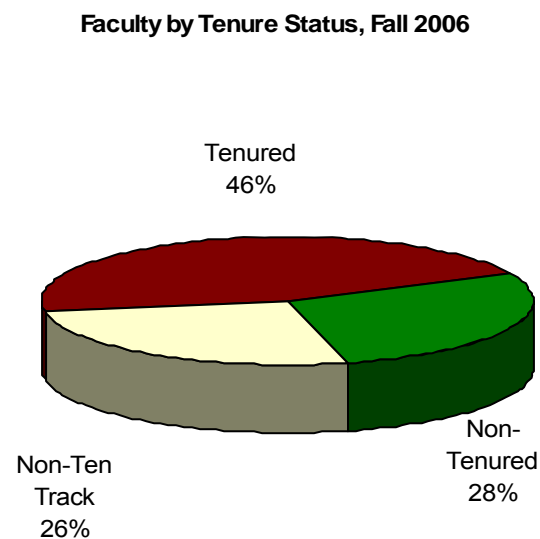
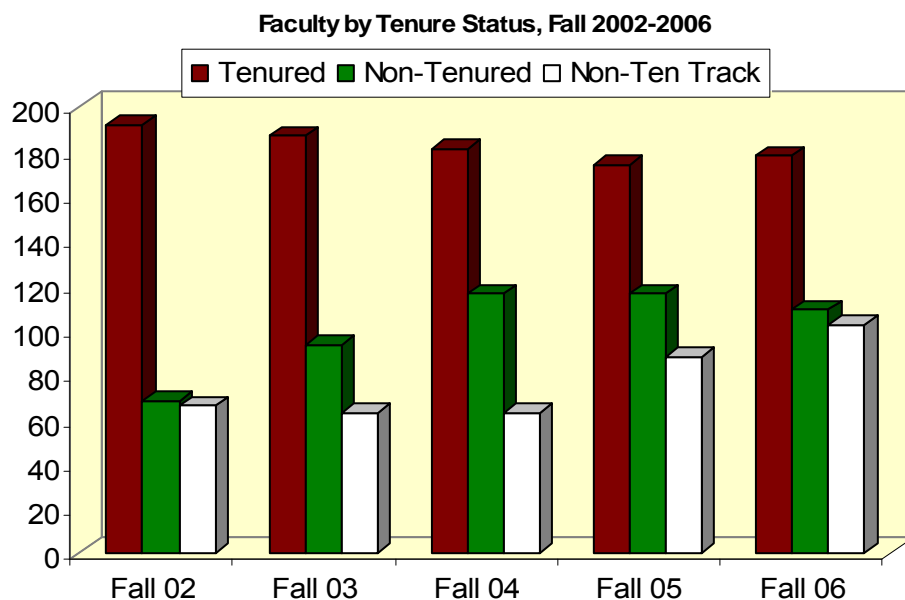
Academic Rank	Fall 02		Fall 03		Fall 04		Fall 05		Fall 06	
<b>Professor</b>	30	10%	26	8%	33	9%	33	9%	32	8%
Asian	1	3%	1	4%	1	3%	1	3%	1	3%
Black	4	14%	4	15%	6	18%	6	18%	6	19%
Hispanic	1	3%	1	4%	1	3%	1	3%	1	3%
Native American	0	0%	0	0%	1	3%	1	3%	1	3%
White	24	80%	20	77%	24	73%	24	73%	23	72%
<b>Associate Professor</b>	121	37%	130	38%	129	36%	124	33%	125	32%
Asian	5	4%	7	5%	8	6%	8	6%	9	7%
Black	20	16%	25	19%	21	16%	21	17%	22	18%
Hispanic	1	1%	1	1%	1	1%	1	1%	2	2%
Native American	1	1%	1	1%	0	0%	0	0%	0	0%
White	94	78%	96	74%	99	77%	94	76%	92	73%
<b>Assistant Professor</b>	75	23%	69	20%	77	21%	73	19%	73	19%
Asian	4	5%	2	2%	2	3%	2	3%	2	3%
Black	17	23%	15	22%	21	27%	18	25%	18	25%
Hispanic	2	3%	4	6%	5	6%	5	7%	3	4%
Multiracial	0	0%	0	0%	2	3%	2	3%	2	3%
Native American	0	0%	0	0%	0	0%	0	0%	0	0%
White	52	69%	48	70%	47	61%	46	63%	48	66%
<b>Instructor</b>	50	15%	59	17%	61	17%	62	16%	159	41%
Asian	2	4%	3	5%	1	2%	1	2%	4	3%
Black	11	22%	13	22%	10	16%	11	18%	38	24%
Hispanic	0	0%	0	0%	0	0%	0	0%	2	1%
Native American	1	2%	0	0%	0	0%	0	0%	1	1%
Multiracial	1	2%	1	2%	0	0%	0	0%	1	1%
White	35	70%	42	71%	50	82%	50	81%	113	71%
<b>Unranked</b>	0	0%	0	0%	0	0%	0	0%	0	0%
Asian	0	0%	0	0%	0	0%	0	0%	0	0%
Black	0	0%	0	0%	0	0%	0	0%	0	0%
Hispanic	0	0%	0	0%	0	0%	0	0%	0	0%
Native American	0	0%	0	0%	0	0%	0	0%	0	0%
White	0	0%	0	0%	0	0%	0	0%	0	0%

*(continued from previous page)*

Academic Rank	Fall 02		Fall 03		Fall 04		Fall 05		Fall 06	
<b>Temporary*</b>	50	15%	60	17%	60	17%	86	23%	99	25%
Asian	2	4%	3	5%	1	2%	3	3%	3	3%
Black	17	34%	23	38%	4	7%	24	28%	25	25%
Multiracial	NA	NA	2	3%	33	55%	1	1%	1	1%
Hispanic	1	2%	1	2%	0	0%	2	2%	2	2%
White	30	60%	31	52%	22	36%	56	65%	67	68%
<b>Total Faculty</b>	<b>326</b>	<b>100%</b>	<b>343</b>	<b>100%</b>	<b>360</b>	<b>100%</b>	<b>378</b>	<b>100%</b>	<b>389</b>	<b>100%</b>

# Faculty Distribution by Tenure Status, Fall 2002-2006

Year	Tenured		Non-Tenured		Non-Tenure Track		Total #
	#	%	#	%	#	%	
Fall 02	192	59	68	21	66	20	326
Fall 03	187	55	93	27	63	18	343
Fall 04	181	50	116	32	63	18	360
Fall 05	174	46	116	31	88	23	378
Fall 06	178	46	109	28	102	26	389



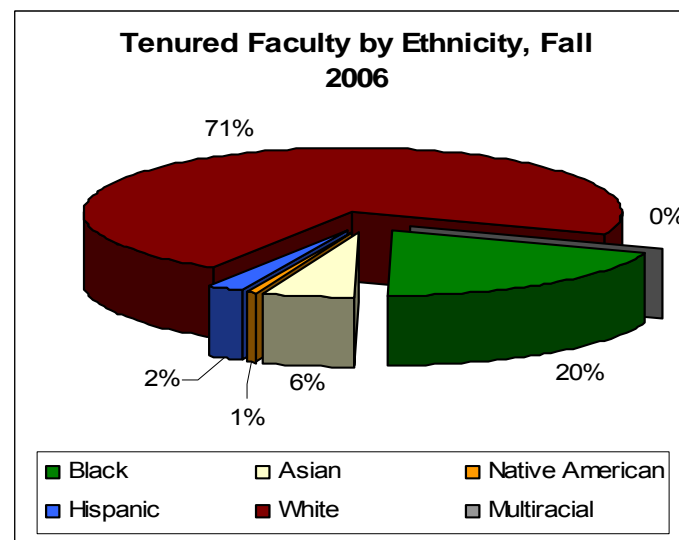
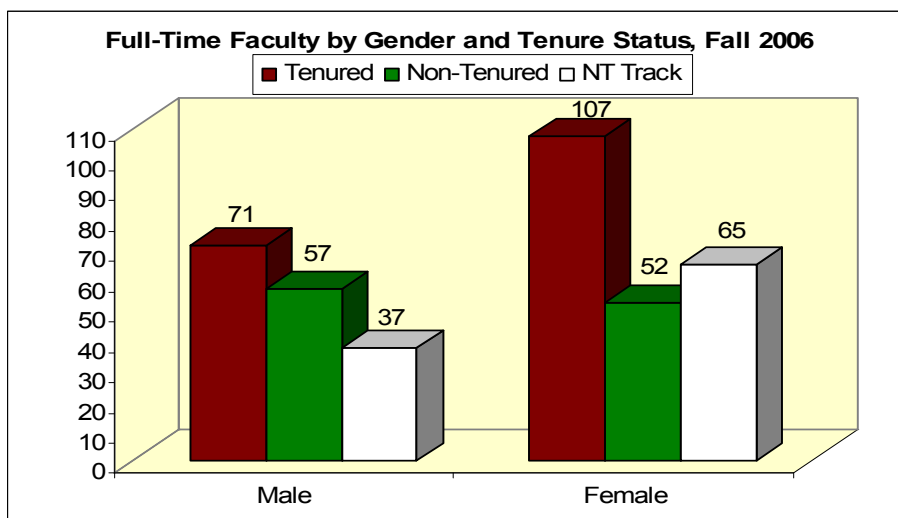
# Tenure Status by Academic Area, Gender, & Ethnicity, Fall 2006

Academic	Tenured	Non-Tenured	NT On Track	Total
Business	13	3	10	26
Fine Arts	6	2	4	12
Foreign Languages	14	7	6	27
Health Science/Physical Education	13	3	14	30
Humanities/Honor	35	14	27	76
Math/CS/ENGR	37	12	9	58
Science	23	16	12	51
Social Sciences	25	10	13	48
Interpreter Training	0	2	0	2
Unclassified	12	40	7	59
<b>Total</b>	<b>178</b>	<b>109</b>	<b>102</b>	<b>389</b>

Gender	Tenured	Non-Tenured	NT On Track	Total
Male	71	57	37	165
Female	107	52	65	224
<b>Total</b>	<b>178</b>	<b>109</b>	<b>102</b>	<b>389</b>

Race	Tenured	Non-Tenured	NT On Track	Total
Black	35	27	22	84
Asian	10	3	3	16
Native American	1	1	0	2
Hispanic	4	2	2	8
White	128	75	73	276
Multiracial	0	1	2	3
<b>Total</b>	<b>178</b>	<b>109</b>	<b>102</b>	<b>389</b>



## Faculty Workload by Area, Fall 2005 & 2006; by Campus, Fall 2006

Area	Sections Taught		Students Taught		FTF	PTF	Average Class Size		Part-Time %	
	Fall 05	Fall 06	Fall 05	Fall 06	Classes Fall 06	Classes Fall 06	Fall 05	Fall 06	Fall 05	Fall 06
BUSINESS	214	202	5,555	5,448	126	76	26	27	35.5%	37.6%
DENTAL HYGIENE	14	14	291	304	12	2	21	22	14.3%	14.3%
ENSL & FOR. LANG	283	262	4,609	4,184	152	110	16	16	42.4%	42.0%
FINE ARTS	104	108	1,795	1,844	62	45	17	17	43.3%	42.6%
FIRE MANAGEMENT	2	2	20	20	1	1	10	10	50.0%	50.0%
HEDS	33	23	609	365	12	11	19	16	63.6%	50.0%
HUMANITIES	791	750	16,854	15,983	456	294	21	21	39.4%	39.2%
INTERPRETER TRAINING	16	15	146	152	11	4	9	10	43.8%	26.7%
MATHEMATICS & CS	472	468	11,387	11,910	338	130	24	24	28.8%	27.8%
NURSING	11	11	252	322	11	0	23	29	0.0%	0.0%
PHYSICAL EDUCATION	176	189	3,479	3,570	101	88	20	19	40.9%	46.6%
SCIENCE	544	523	12,294	11,910	328	195	23	23	43.9%	37.3%
SOCIAL SCIENCE	440	472	12,536	13,775	295	177	29	29	36.6%	37.5%
<b>COLLEGE TOTAL</b>	<b>3,100</b>	<b>3,039</b>	<b>69,827</b>	<b>68,992</b>	<b>1,905</b>	<b>1,132</b>	<b>23</b>	<b>23</b>	<b>38.5%</b>	<b>22.7%</b>

CAMPUS	Sections Taught	Students Taught	FTF Classes	PTF Classes	Average Class Size	Part-Time %
	Fall 2006	Fall 2006	Fall 06	Fall 06	Fall 2006	Fall 2006
CLARKSTON	693	14,648	442	251	21	21.1%
DECATUR	288	6,528	168	120	23	22.7%
DUNWOODY	953	21,267	581	372	22	39.0%
LAWRENCEVILLE	885	21,995	566	319	25	24.9%
NEWTON	220	4,554	148	72	21	20.7%

# Georgia Perimeter College



## 2006-2007 FACTBOOK

References



# Quick Reference I for Georgia Perimeter College

<b>Number of Students On &amp; Off Campus, Fall 2006</b>	
<b>Total Headcount (Unduplicated)</b>	<b>19,955</b>
Headcount by Gender:	
Male	7,642
Female	12,313
Headcount by Race:	
Asian	2,094
Black	7,063
Hispanic	1,043
Multiracial	1,406
Native American	63
White	8,286
Headcount by Campus: (Duplicated)	
Clarkston	5,735
Decatur	2,831
Dunwoody/Alpharetta	6,986
Lawrenceville	6,302
Newton	1,643
Off Campus/Distance Education	2,649
<b>Full-Time Equivalent</b>	<b>14,964</b>
<b>Total Cont. &amp; Corp. Ed. Participants</b>	<b>7,355</b>
<b>Degrees Awarded FY 2006</b>	
<b>Total Awarded</b>	<b>1,361</b>
Associate of Arts	171
Associate of Science	1,091

Associate of Applied Science	12
Certificate & Career Program	08
Career Program	79
<b>Degrees by Campus</b>	
Clarkston	299
Lawrenceville	482
Dunwoody	392
Decatur	84
Newton	102
<b>Degrees by Ethnicity</b>	
Asian	125
Black	374
Hispanic	58
Multiracial	72
Native American	2
White	730
<b>Enrollment by County Fall 2006</b>	
Barrow	137
Cherokee	130
Clarke	22
Clayton	450
Cobb	638
DeKalb	3,723
Douglas	69
Fayette	44
Forsyth	185
Fulton	2,551
Gwinnett	5,025

Henry	222
Newton	438
Newton	706
Walton	283
Others in-State	361
Out-of-State	4,971
<b>Tuition &amp; Fees FY 2008</b>	
<b>Tuition (per hour)</b>	
In-State	\$73.00
Out-of-State	\$292.00
Distance Learning	\$99.00
<b>Required Fees</b>	
Application (one time only)	\$20.00
Student Support Service	\$10.00
Student Activity	\$45.00
Student Athletic	\$27.00
Technology	\$50.00
<b>Special Fees</b>	
Applied Music per hour	\$50.00
Dental Hygiene Insurance/Lab	\$65.00
Critical Languages	\$30.00
Late Registration	\$50.00
Nursing Insurance/Lab	\$156.00
Science Lab	\$30.00
Int'l Student Health Insurance	\$472.00

# Quick Reference II for Georgia Perimeter College

Revenue & Expenditure FY 07		Corps of Instruction, Fall 06		Georgia Population Projection 00 - 25					
<b>Revenues</b>		<b>By Rank</b>		White	Black	Native Am	Asian	Total	
Tuition and Fees	\$36,786,567	Professor	41	00	69%	29%	0.2%	2.0%	7,874,792
State/Local Appropriation	59,392,062	Associate Professor	158	05	68%	30%	0.2%	2.0%	8,412,686
Other Income	2,850,000	Assistant Professor	93	10	67%	31%	0.2%	2.1%	8,823,902
Departmental Sales & Services	2,700,000	Instructor	185	15	66%	32%	0.2%	2.2%	9,199,751
Sponsored Operations	17,500,000	Unranked	4	20	65%	33%	0.2%	2.4%	9,551,672
<b>TOTAL REVENUE</b>	<b>\$119,228,629</b>	<b>By Gender</b>		25	64%	34%	0.2%	2.5%	9,869,427
<b>Budget Allocations</b>		Male	202	<b>Population of Counties in the GPC Service Region 2006 (estimate)</b>					
Instruction	47,800,201	Female	279	Cherokee	195,327				
Public Services	1,000	<b>By Race</b>		Clarke	112,787				
Academic Support	9,972,370	Asian	17	Clayton	271,240				
Student Services	10,848,894	Black	105	Cobb	679,325				
Institutional Support	19,443,233	Hispanic	8	DeKalb	723,602				
Plant Operations	10,962,931	Native American	3	Douglas	119,557				
Departmental Sales & Services	2,700,000	Multiracial	4	Fayette	106,671				
Sponsored Operations	17,500,000	White	344	Forsyth	150,968				
<b>TOTAL ALLOCATIONS</b>	<b>\$119,228,629</b>	<b>By Highest Degree</b>		Fulton	960,009				
<b>Expenditure Per Student</b>		Doctorate	142	Gwinnett	757,104				
FTE Student	15,693	Specialist	7	Henry	178,033				
Expenditure Per FTE Student (excluding sponsored)	\$6,482	Master's	319	Newton	91,451				
		Bachelor's	13	Newton	80,332				
		<b>By Tenure</b>		Walton	79,388				
		Tenured	220	<b>Total Population of the Region</b>	<b>4,505,794</b>				
		On Track	112	Sources: 1. Selig Center, University of Georgia, <i>Projected Population by Race, Georgia, 1995-2025</i>					
		Not Eligible/Not On Track	149	2. Georgia Department of Labor, Area Labor Profiles.					
		<b>Total</b>	<b>481</b>	Note: Corps of instruction includes 62 people of Executive/Administrative/Managerial group and 326 faculty members.					

# A Directory for Georgia Perimeter College

## GPC District Offices

VP Educational Affairs	678-891-2445
Accounting	678-891-2060
Admissions and Records	678-891-3250
Alumni Relations	678-891-2550
Athletics	678-891-2360
Continuing and Corporate Education	678-891-3000
Disability Services	678-891-3385
Distance Learning	678-891-2805
Financial Aid	678-891-3000
Human Resources	678-891-2500
ID Card Services	678-891-3330
International Center	678-891-3230
Institutional Advancement	678-891-2550
Office of Institutional Research and Planning	678-891-2570
Marketing and Public Relations	678-891-2680
Recruitment and Retention	678-891-4125
VP Financial Affairs	678-891-2515
Grants & Sponsored Programs	678-891-2525
Payroll	678-891-2645
Budget	678-891-2375
Auxiliary Services	678-891-3340
Purchasing	678-891-3325

## GPC Campus Offices

<b>Clarkston</b>	
Registrar and Admissions	678-891-3500
Student Accounts	678-891-3810
Financial Aid	678-891-3505
<b>Dunwoody/Alpharetta</b>	
Registrar and Admissions	770-274-5200
Student Accounts	770-274-5395
Financial Aid	770-274-5290
<b>Lawrenceville</b>	
Registrar and Admissions	678-407-5315
Student Accounts	678-407-5137
Financial Aid	678-407-5160
<b>Decatur</b>	
Registrar and Admissions	678-891-2470
Student Accounts	678-891-2730
Financial Aid	678-891-2510
<b>Newton</b>	
Registrar and Admissions	770-278-1215
Student Accounts	770-278-1310
Financial Aid	770-278-1275

# 2006-2007 Factbook

---

The University System of Georgia AA/EOE

Creative Svcs provided by the Georgia Perimeter College Office of Marketing & Public Relations

08-02-716

