

# Preface

---

The 2007-2009 edition of *The Georgia Perimeter College Fact Book* provides a comprehensive statistical portrait of Georgia Perimeter College (GPC). This book presents a wide array of information and data in many areas including enrollment, human resources, college finances, and other aspects of Georgia Perimeter College and its constituent locations: Clarkston Campus, Decatur Campus, Dunwoody Campus, Lawrenceville Campus, Newton Campus and the Alpharetta site.

All enrollment information is based on fall data. All administrative, academic information and organizational charts reflect the most recent changes. The definitions and guidelines used in this book are consistent with the Integrated Post-secondary Education Data System (IPEDS) and policies of the Board of Regents of the University System of Georgia.

The *Georgia Perimeter College Fact Book 2007-2009* is a publication of the Office of Institutional Research and Planning (OIRP). It is also a product of cooperative efforts of the many offices and campuses of GPC.

The electronic version of the fact book is accessible to the public on the World Wide Web via Georgia Perimeter College's home page at [www.gpc.edu](http://www.gpc.edu) or directly at [www.gpc.edu/~oirp](http://www.gpc.edu/~oirp). Inquiries and comments concerning this document are always welcomed and may be directed to the Office of Institutional Research and Planning: 1975 Lakeside Parkway, Suite 350B, Tucker, GA 30084; Phone: 678-891-2570; Fax: 678-891-2868; E-mail: [Janice.Byrd@gpc.edu](mailto:Janice.Byrd@gpc.edu).

Janice W. Byrd, Coordinator Information Services, Office of Institutional Research and Planning  
Ngoc Thui Dao, Information Analyst III, Office of Information Technology  
Patricia L. Gregg, Ph.D, Associate Director, Institutional Effectiveness, Office of Institutional Research and Planning  
Janna Kelley, Associate Director, Office of Information Technology  
Hein Ngo, Information Analyst I, Office of Information Technology  
Thanh Nguyen, Information Analyst I, Office of Information Technology  
Godfrey Fuji Noe, Ph.D, MA, Director, Office of Institutional Research and Planning  
Kimberly Owens, Information Analyst III, Office of Information Technology  
Felisha Shepard-White, MA, Research Associate, Institutional Effectiveness, Office of Institutional Research and Planning  
Janet Stewart, Data Preparation Specialist, Office of Information Technology  
Michelle Walker, Information Analyst I, Office of Institutional Research and Planning

# Table of Contents

---

Preface	i	Degrees Awarded by Major, FY 2007	24
Table of Contents	ii	Degrees Awarded by Major, FY 2008	25
Table of Contents	iii	Degrees Awarded by Major, FY 2009	26
		Students Taught by Program by Campus, Fall 2007	27
		Students Taught by Program by Campus, Fall 2008	28
		Students Taught by Program by Campus, Fall 2005	29
<b>ORGANIZATION</b>	<b>1</b>	<b>STUDENTS</b>	<b>30</b>
Voices, Values, Vision	2	Enrollment Summary I – All Campuses, Fall 04-09	31
History	4	Enrollment Summary II – All Campuses, Fall 04-09	32
Board of Regents	5	Enrollment of GPC Alpharetta, Fall 04-09	33
Chief Executive Officer, Vice Presidents, and CIO	6	Enrollment of GPC Clarkston, Fall 04-09	35
Administrative Organizational Chart	7	Enrollment of GPC Decatur, Fall 04-09	37
Financial and Administrative Affairs Team	8	Enrollment of GPC Dunwoody, Fall 04-09	39
Academic Affairs Team	9	Enrollment of GPC Lawrenceville, Fall 00-05	41
Institutional Advancement	10	Enrollment of GPC Rockdale/Newton, Fall 04-09	43
Student Affairs & Enrollment Management Team	11	Enrollment of GPC Online/Distance	
Institutional Technology/Institutional Research Team	12	Education, Fall 04-09	45
Geographic Locations of the GPC Campuses	13	Enrollment by Age Group, Fall 2001-2005;	
Maps of Alpharetta Center & Clarkston Campus	14	and by County, Fall 2007-2009	47
Maps of Decatur & Dunwoody Campuses	15	High Schools Attended by 100 or More, Fall 2009	48
		International Student Enrollment I, Fall 2007-2009	50
<b>ACADEMICS</b>	<b>17</b>	Retention, Graduation & Transfer Rate, Fall 2004 Cohort	52
Academic Programs Offered, FY 2010	18	Retention, Graduation & Transfer Rate, Fall 2005 Cohort	53
Degrees Awarded Summary, FY 2004-2009	19	Retention, Graduation & Transfer Rate, Fall 2006 Cohort	54
Degrees Awarded by Campus, FY 2007- 2009	20		
Degrees Awarded by Ethnicity and Gender, FY 2007- 2009	22		

## Table of Contents (Continued)

Retention Rates Fall 2007 Cohort	55	<b>EMPLOYEES</b>	<b>82</b>
Retention Rates Fall 2007 Cohort	56	Full-Time Employees by EEO Classification	83
Student Financial Aid Awarded by Source, FY 06-10	57	Corps of Instruction-All Campuses, Fall 2007	84
Applications Received, Fall 2006-2009		Corps of Instruction-All Campuses, Fall 2008	85
Testing Activities, Fall 2007-2010	58	Corps of Instruction-All Campuses, Fall 2009	86
Semester Credit Hour Report, GPC & USG FY 08-10	59	Highest Earned Degree, Full-Time Instructional Faculty, Fall 2007- Fall 08	87
Comparison Other USG Two-Year Colleges, Fall 2005	60	Highest Earned Degree, Full-Time Instructional Faculty, Fall 2009	88
Comparison Other USG Two-Year Colleges, Fall 2008	61	Faculty Distribution by Rank and Ethnicity Fall 2005-09	89
Comparison Other USG Two-Year Colleges, Fall 2009	62	Faculty Distribution by Tenure Status, Fall 2005-09	90
Athletics, FY 2005 – 06	63	Tenure by Academic Area, Gender, & Ethnicity, Fall 2007	91
Retention, Graduation Rates for Athletes Fall 05	64	Tenure by Academic Area, Gender, & Ethnicity, Fall 2008	92
Retention, Graduation Rates for Athletes Fall 06	67	Tenure by Academic Area, Gender, & Ethnicity, Fall 2008	93
Retention, Graduation Rates for Athletes Fall 07	70	Faculty Workload by Area, Fall 2006 & 2007; By Campus, Fall 2007	94
Retention, Graduation Rates for Athletes Fall 08	73	Faculty Workload by Area, Fall 2007 & 2008; By Campus, Fall 2008	95
Students with Disabilities, from 04-09	76	Faculty Workload by Area, Fall 2008 & 2009; By Campus, Fall 2009	96
<b>FUNDING AND FACILITIES</b>	<b>77</b>	<b>QUICK REFERENCES FOR GPC</b>	<b>97</b>
Student Tuition and Fees, FY 2010	78	Quick Reference I for Georgia Perimeter College	98
Revenues and Expenditures Per Student, FY 2006-2010	79	A Directory for Georgia Perimeter College	100
Budget Allocations, FY 2006-2010	80		
Library Collections, FY 2005-2010	81		

# Organization

---

# Voices, Values, Vision:

---

## Transforming Lives, Strengthening Communities, Fostering Teamwork

### Vision

As a team, Georgia Perimeter College will be recognized as a dynamic and creative learning environment focused on student success, guided by the values of trust, excellence, integrity, civility, passion, diversity and efficiency.

### Mission

Georgia Perimeter College transforms the lives of our students to thrive in a global society.

As a diverse, multi-campus two-year college, we provide relevant, responsive, learner-centered higher education that facilitates the achievement of academic, professional and personal goals.

We embrace excellence, teamwork, and quality service that link the college's human capital with our communities to enhance economic, social and cultural vitality.

As a key point of entry for students into higher education in Georgia and as the major provider of associate degrees and student transfer opportunities, Georgia Perimeter College supports the Strategic Plan of the University System of Georgia.

### Goals

#### **WE WILL STRENGTHEN STUDENT SUCCESS.**

Student success is at the heart of all we do at Georgia Perimeter College. For students to grow and develop academically, they need a faculty devoted to teaching excellence. To prepare students to compete in the global workplace, we will offer relevant and responsive learning opportunities both inside and outside the classroom.

#### **WE WILL CREATE AND FOSTER A CULTURE OF TEAMWORK, LEADERSHIP, QUALITY, SERVICE AND CONTINUOUS IMPROVEMENT.**

A cornerstone to the success of Georgia Perimeter College is our institutional culture. Through open communication, mutual respect and trust, we will practice teamwork, leadership, quality service and continuous improvement.

**WE WILL ENHANCE THE ECONOMIC, SOCIAL AND CULTURAL VITALITY OF OUR COMMUNITIES.**

Georgia Perimeter College is a vital partner in the success of our communities. Along with our success, size, and multiple locations, comes a responsibility to share our valuable resources with others. We will bring our human capital to our communities through innovative learning opportunities for our students and improved partnerships with other educational institutions, business, industry, and government agencies to strengthen the future of our communities.

**WE WILL EXPAND ACCESS AND ENROLLMENT CAPACITY.**

Georgia Perimeter College embraces its role as an access institution. In order to remain accessible, we must increase our capacity to serve the educational needs of a growing and diverse population. As the state's leading provider of distance education, we also have a responsibility to continually reach out to under-served areas and become accessible to learners worldwide.

**Core Values**

**TRUST**

We believe trust is the pinnacle of our core values and essential to success. Our competence and character builds trust with ourselves, between each other and throughout our organization.

**EXCELLENCE**

We strive for excellence in all that we do in order to model success for our students. Excellence in teaching and service provides the foundation on which our students will achieve success.

**INTEGRITY**

We hold firm to our integrity. We take responsibility for our actions and we stand by our commitment to support our students, colleagues and community.

**CIVILITY**

We foster a collegial environment that cultivates mutual respect, enhanced problem-solving, open communication and teamwork. Civility builds trust among employees, students and members of our community and promotes cooperation across organizational boundaries.

**PASSION**

We are passionate about the success of our students, colleagues and community. We show our passion through our quality work, creativity, teamwork, outreach and engagement with our communities.

**DIVERSITY**

We welcome and embrace the diversity of our community, organization and student body. We respect all individuals for their ideas, perspectives, commonalities and differences.

**EFFICIENCY**

We are committed to individual and organizational efficiency. As an efficient organization, we will increase the resources and capital of our organization, remain affordable and accessible to our students and remove barriers to success.

# History

---

Founded by the citizens of DeKalb County and the DeKalb Board of Education under the Junior College Act of 1958, Georgia Perimeter College opened as DeKalb College with its Clarkston Campus in 1964. It was the only public junior college in the state supported and controlled by a local Board of Education. It was established in order that any resident of the DeKalb School District who held a high school diploma or its equivalent and who desired to seek two years of postsecondary education might have the opportunity to do so.

The College's Decatur (formerly known as South) Campus opened in 1972. Also beginning in 1972, students enrolled in DeKalb Area Technical School were able to enroll dually in vocational and collegiate programs, and the college was designated DeKalb Community College. As growth continued both for DeKalb County and the college, the Dunwoody (formerly North) Campus was added and began operation in 1979. DeKalb College pioneered in Georgia in open-door admissions, personalized approaches to instruction, and community-related curricula and activities.

In 1985, DeKalb Vocational Technical School was placed under the governance of a state board for vocational-technical schools with daily operations remaining under the control of the DeKalb County School System. Students enrolled in specific Associate in Applied Science degree programs continued, however, to enroll dually in the College and technical school, now known as DeKalb Technical College.

In 1986, when DeKalb County relinquished its support, DeKalb College was accepted by the Board of Regents of the University System of Georgia as the thirty-fourth member institution.

During spring 1993, DeKalb College, in cooperation with Clayton State College, DeKalb Technical College and Rockdale County Public Schools, formed the Rockdale Center for Higher Education, which offers both credit and non-credit courses.

In November 1997, the Board of Regents of the University System of Georgia approved changing the name of the college from DeKalb College to Georgia Perimeter College to reflect its expanding mission and its service throughout the metro Atlanta area. As part of changing the college's name, the names of the campuses were changed to identify the cities or counties in which they are located.

In December 2001, Georgia Perimeter College's Lawrenceville Campus, along with its partners at the Gwinnett University Center, relocated from its humble beginnings at the MacCleod Industrial Park on Sugarloaf Parkway to its current 177-acre campus at 1000 University Center Lane.

The college's academic offerings correspond with curricular content and requirements of the University System of Georgia. Georgia Perimeter College also serves as a community cultural center for the performing arts in music and drama. Curricula feature transfer, learning support, career, continuing and distance education programs as well as joint educational offerings with other system institutions and state-supported technical institutions. Associate degrees are awarded to graduates who complete the two-year transfer and career programs.

Source: [www.gpc.edu/News\\_and\\_Information/mission.php3#history](http://www.gpc.edu/News_and_Information/mission.php3#history)

# Board of Regents

---

The Board of Regents of the University System of Georgia was created in 1931 as a part of a reorganization of Georgia's state government. With this act, public higher education in Georgia was unified for the first time under a single governing and management authority. The governor appoints members to the Board, who each serve seven years. Today the Board of Regents is composed of 18 members, five of whom are appointed from the state-at-large, and one from each of the 13 congressional districts. The Board elects a chancellor who serves as its chief executive officer and the chief administrative officer of the University System.

The Board oversees [35 colleges and universities](#): four research universities, two regional universities, 13 state universities, eight state colleges, and eight two-year colleges. These institutions enroll approximately 302,000 students and employ over 40,000 faculty and staff to provide teaching and related services to students and the communities in which they are located.

## Members and Terms of the BOR

- **Bernard, Kenneth R., Jr.**  
(01/01/07-01/01/14)
- **Bishop, James A.**  
(1/01/07-01/01/11)
- **Cooper, Fredrick E.**  
(01/01/10-01/01/17)
- **Ellis, Larry**  
(08/01/09-01/01/16)
- **Hatcher, Robert F. (Chair)**  
(01/06/06-01/01/01)

- **Hopkins, C. Thomas, Jr. MD**  
(5/10/10-01/01/15)
- **Jenkins, Felton**  
(01/06/06-01/01/13)
- **Jennings, W. Mansfield, Jr.**  
(01/06/06-01/01/13)
- **Jolly, James R**  
(01/01/08-01/01/15)
- **Leebern, Donald M., Jr.**  
(01/01/98-01/01/12)
- **NeSmith, William H., Jr.**  
(03/13/08- 01/01/15)
- **Poitevint, Doreen S.**  
(01/13/04-01/13/11)
- **Potts, Willis J. (Vice Chair)**  
(03/07/06-01/01/13)
- **Rodwell, Wanda Yancey**  
(01/01/05-01/01/12)
- **Stelling, Kessel, Jr.**  
(01/01/08-01/01/15)
- **Tarbutton, Benjamin J., III**  
(01/06/06-01/01/13)
- **Tucker, Richard L.**  
(01/28/05 -01/01/12)
- **Walker, Larry**  
(08/01/09 – 01/01/16)

## Chancellor of the USG

- **Erroll B. Davis Jr**

# Chief Executive Officer, Vice Presidents, and CIO

---

## Chief Executive Officer

The President of Georgia Perimeter College is the chief executive and administrative officer. The President is appointed by the Board of Regents and is directly responsible to the BOR for the conduct of the institution, the development of institutional goals, the formulation of policies, and the overall well being of the college.

## The President of GPC

Dr. Anthony S. Tricoli  
(6<sup>th</sup> president)

## The Past Presidents of GPC

- 1<sup>st</sup>-Thad W. Hollingsworth (1963-1967)
- 2<sup>nd</sup>-James H. Hinson, Jr. (1967-1977)
- 3<sup>rd</sup>-W. Wayne Scott (1977-1982)
- 4<sup>th</sup>-Marvin Cole (1982-1994)
- 5<sup>th</sup>-Jacquelyn M. Belcher, J.D. (1995-2005)



## Vice Presidents/CIO

Ronald L. Carruth, Executive VP,  
Financial & Administrative  
Affairs

Virginia Michelich, Ph.D., VP,  
Academic Affairs

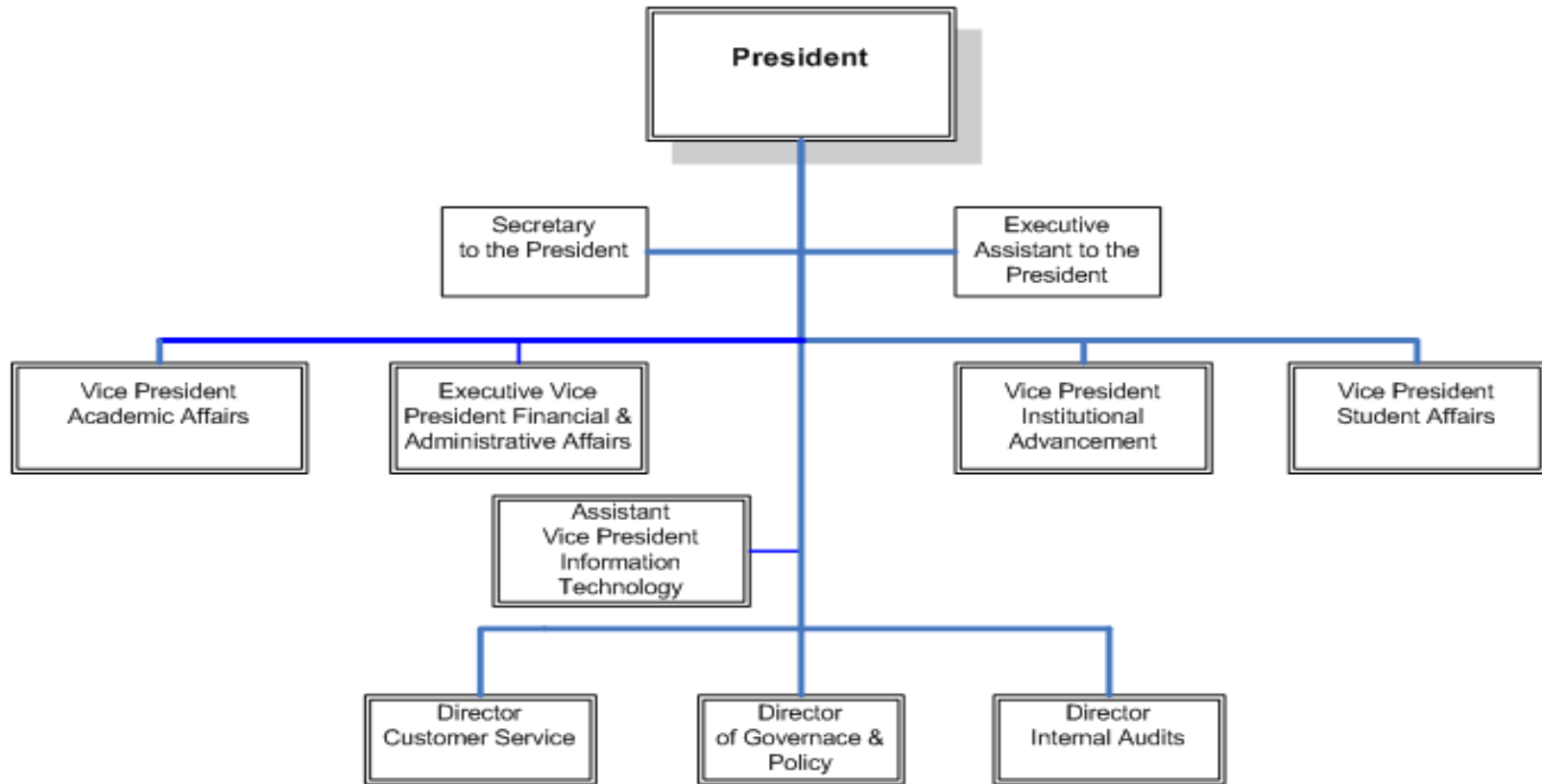
Jeff Tarnowski, VP, Institutional  
Advancement

Vincent G. June, Ph.D., VP,  
Student Affairs  
and Enrollment Services

J. Reid Christenberry, CIO,  
Office of Institutional Technology  
Office Institutional Research  
and Planning

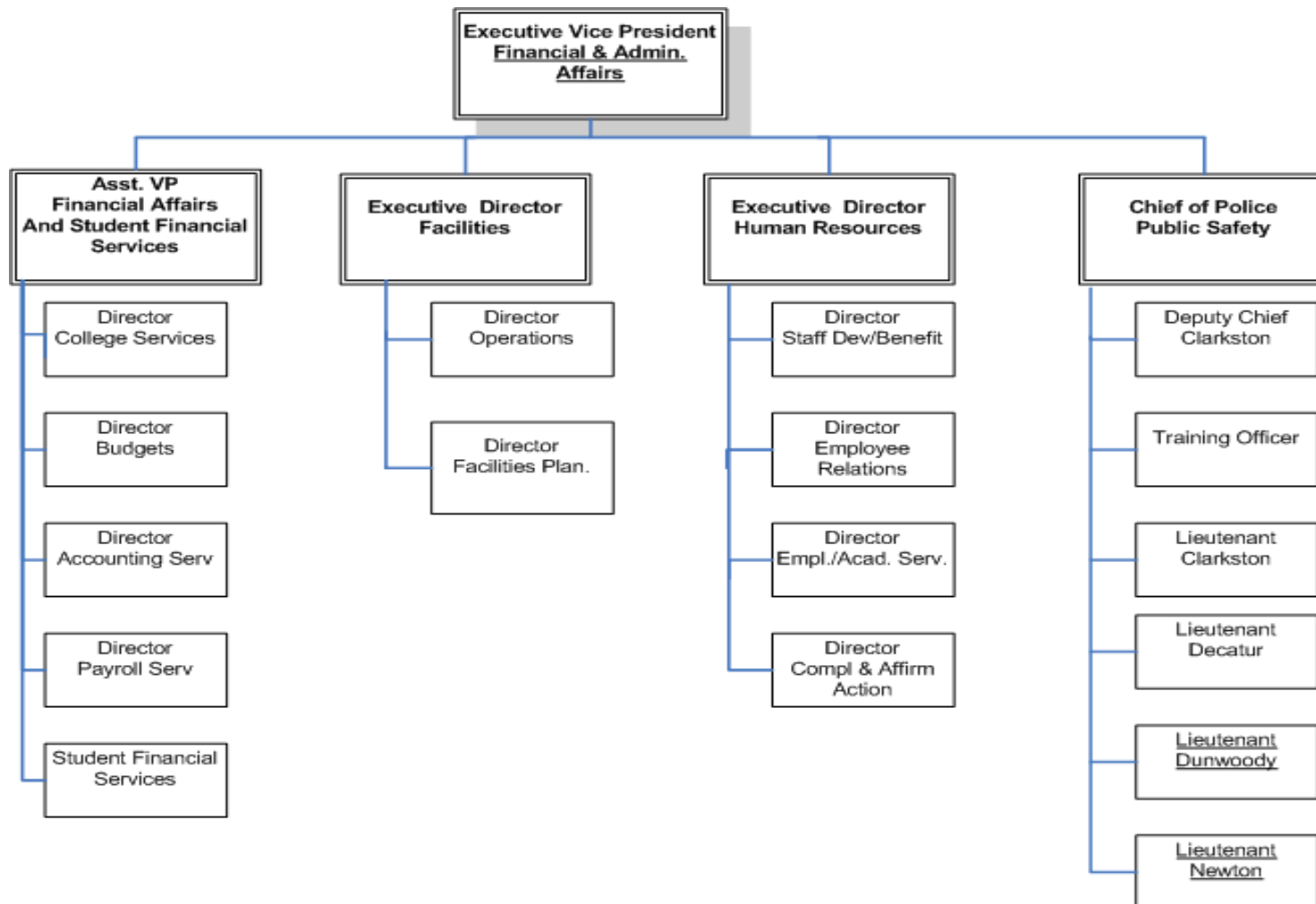
# Administrative Organizational Chart

---

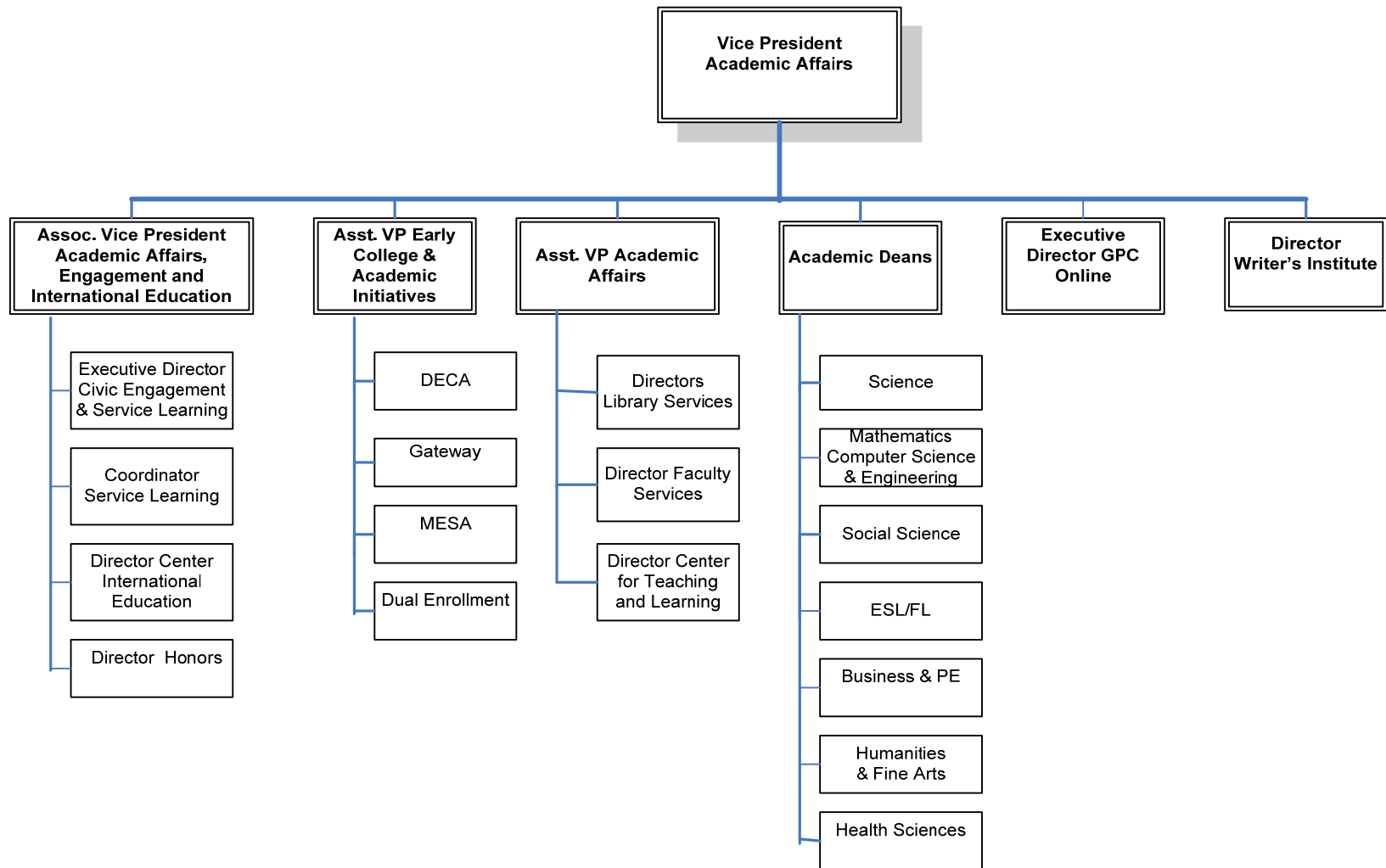


# Financial and Administrative Affairs Team

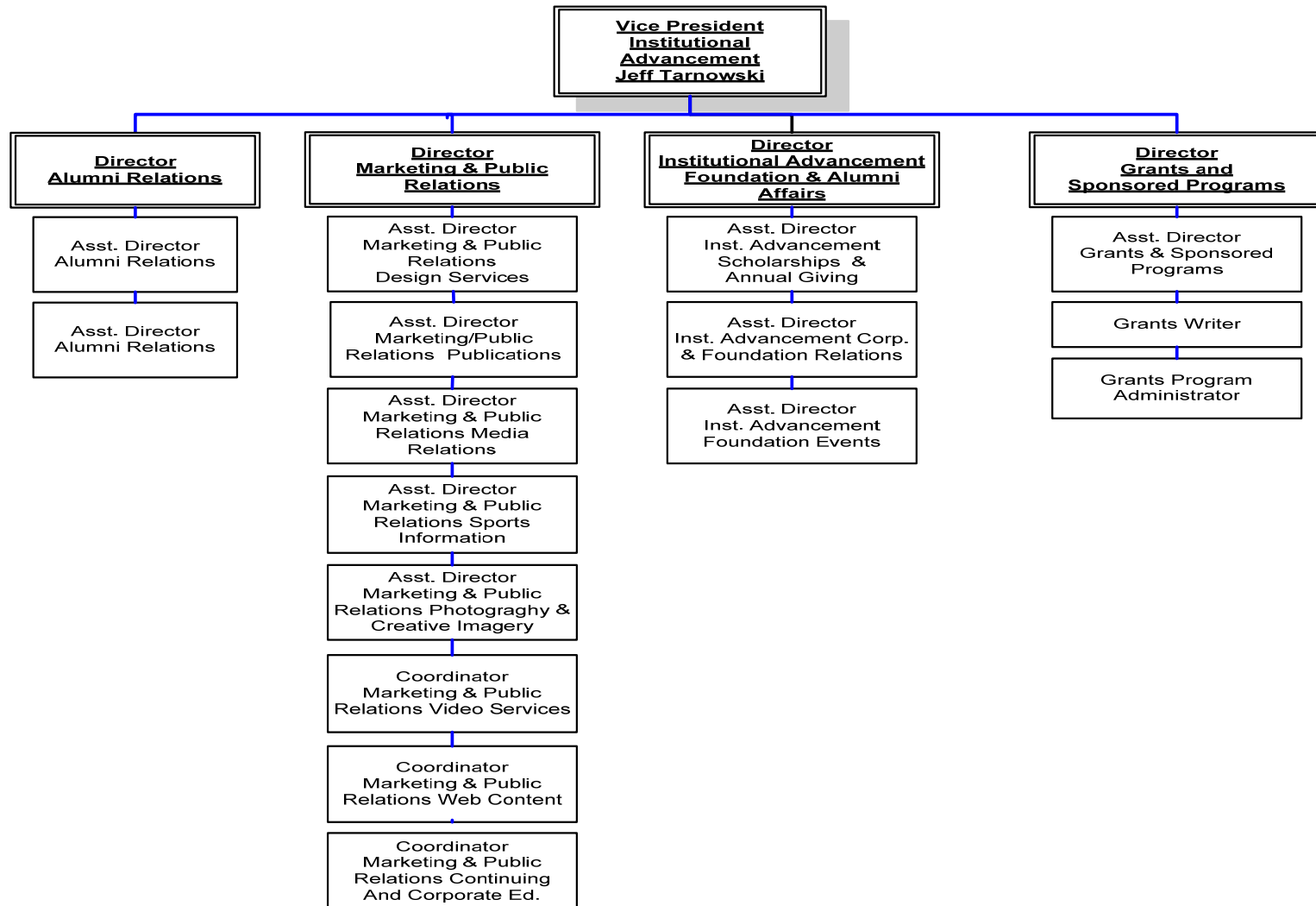
---



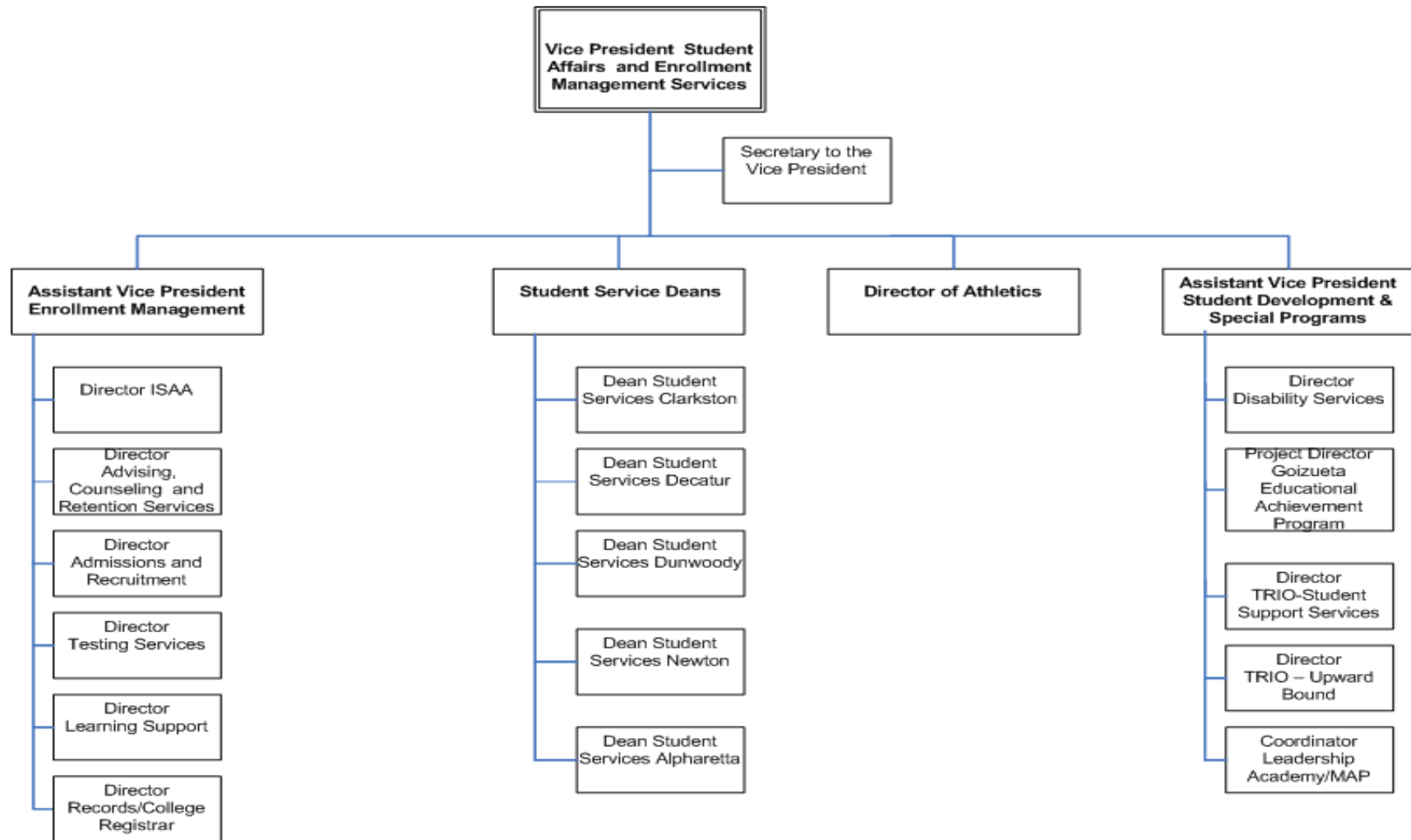
# Academic Affairs Team



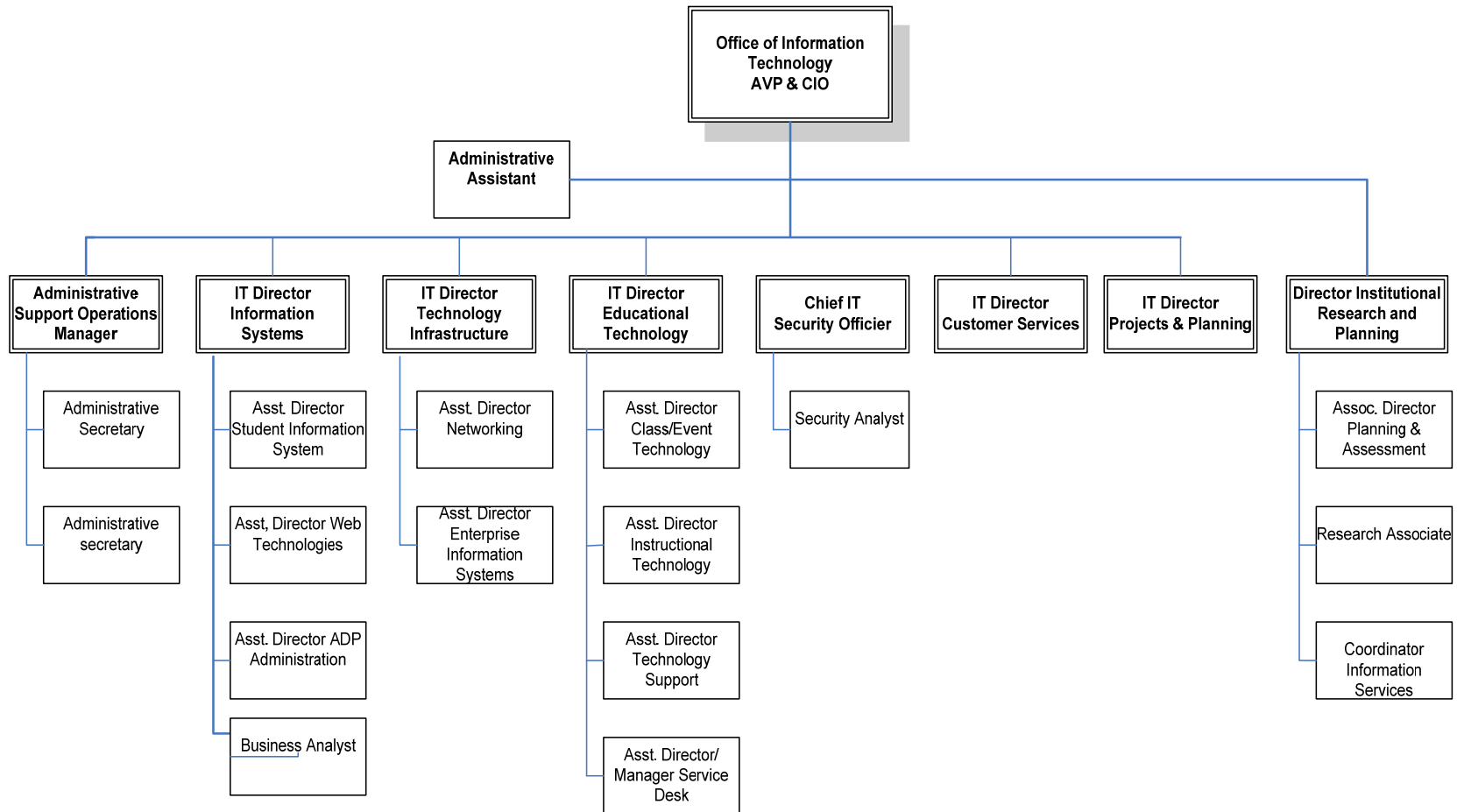
# Institutional Advancement



# Student Affairs and Enrollment Management



# Office Institutional Technology/Institutional Research & Planning



# Geographic Locations of the GPC Campuses

---

**Alpharetta Center**  
3705 Brookside Pkwy  
Alpharetta, GA 30022

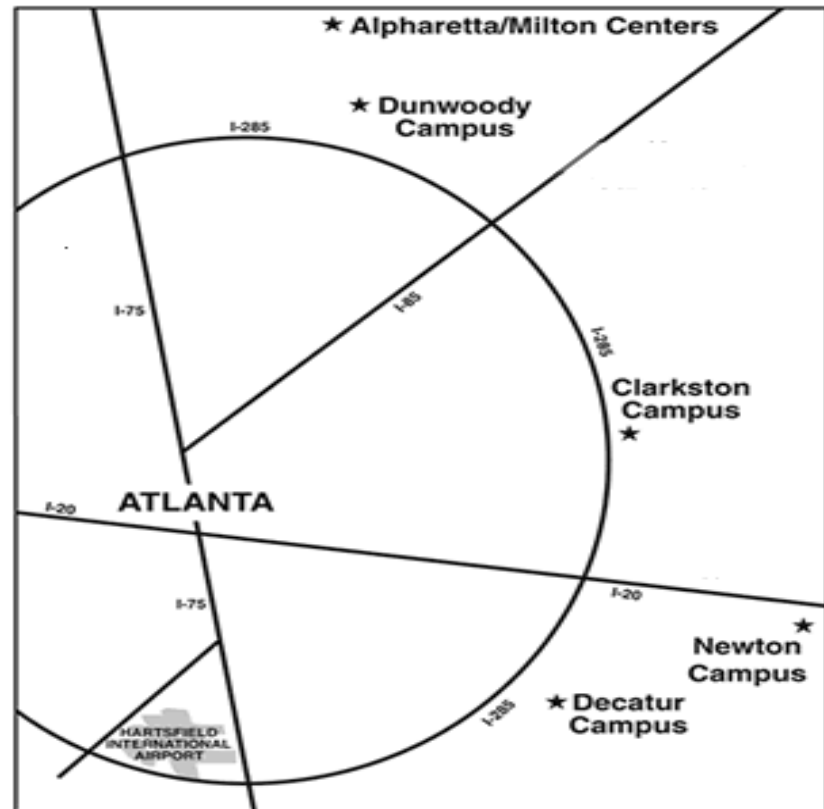
**Clarkston Campus**  
555 North Indian Creek Dr.  
Clarkston, GA 30021-2361

**Decatur Campus**  
3251 Panthersville Rd.  
Decatur, GA 30034-3897

**Dunwoody Campus**  
2101 Womack Rd.  
Dunwoody, GA 30338-4497

**Newton Campus**  
239 Cedar Lane  
Covington, GA 30014-9948

**GPC Online**  
[Request Information](#)  
(678) 891-2805



# Maps of Alpharetta Center and Clarkston Campus

Alpharetta Center



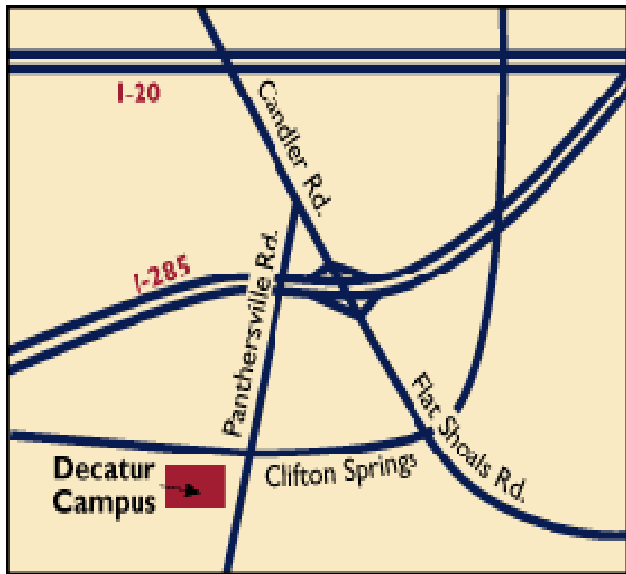
Clarkston Campus



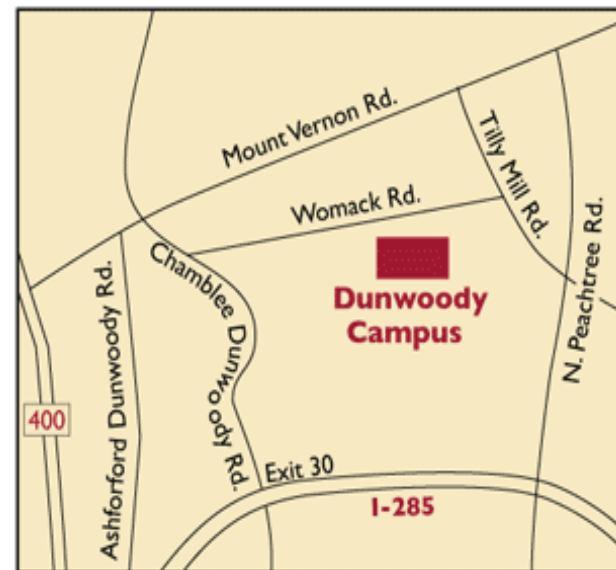
# Maps of Decatur and Dunwoody Campuses

---

Decatur Campus



Dunwoody Campus



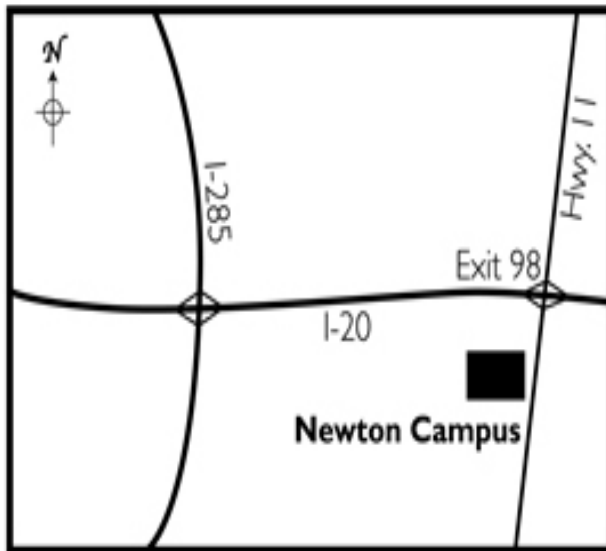
# Map of Newton Campus

---

Newton Campus

GPC Online

*Request Information- (678) 891-2805*



# Academics

---

# Academic Programs Offered, FY 2010

---

## Associate of Arts Degree

Anthropology  
Arts  
Biology (M)  
Chemistry (M)  
Communication  
English  
Film  
Foreign Language  
Foreign Language (Conc. In Business)  
Forensic Science  
Geology (M)  
History  
Homeland Security & Emergency Management  
Journalism/Professional Writing  
Mathematics (M)  
Philosophy  
Physics (M)  
Political Science  
Sociology  
Theatre

## Associate of Applied Science Degree or Certificate

Fire Management (Career)  
Library and Information Science Technology (Career)  
Medical Assisting (Career) (1)  
Sign Language Interpreting (Career)

## Associate of Science Degree

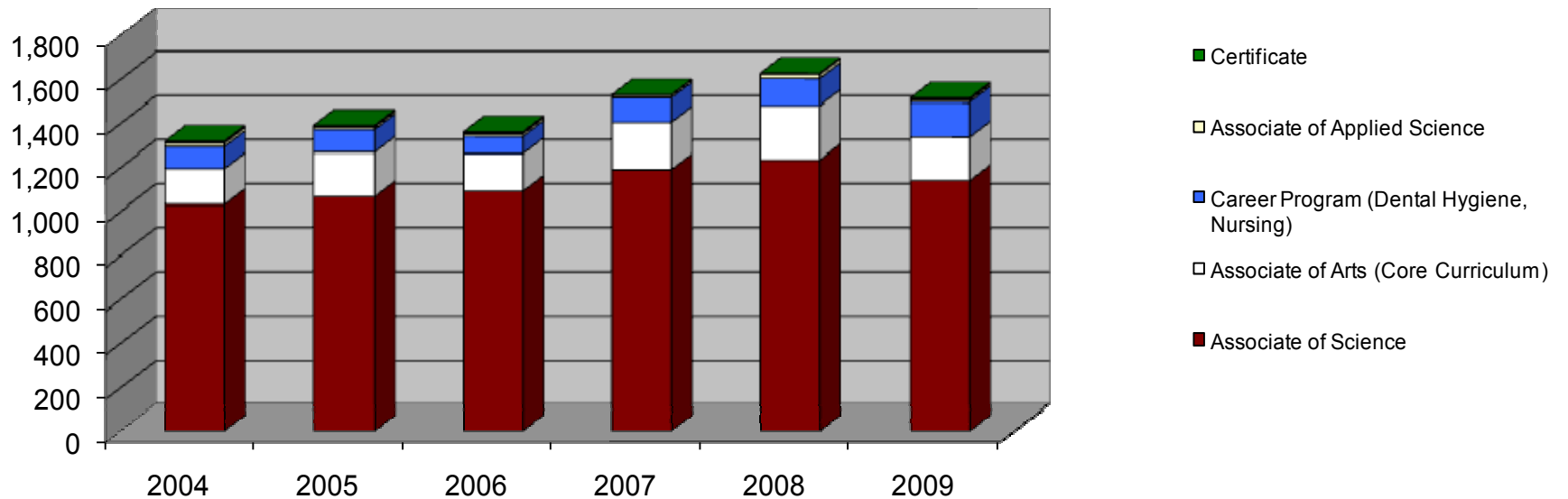
Arts  
Business Administration  
Computer Science (M)  
Criminal Justice  
Dental Hygiene (Career)  
Education (Early Childhood [Pre-K – 5<sup>th</sup> Grade])  
Education (Middle School/Special Ed/Health & PE)  
Education (Secondary Education) (2)  
Engineering (M)  
General Studies  
Health and Physical Education  
Health Sciences – Health Information Administration (M)  
Health Sciences – Health Medical Technology (M)  
Health Sciences – Radiologic Sciences – (*Diagnostic Sonography, Nuclear Medicine Technology or Radiation Therapy*) (M)  
Health Sciences – Respiratory Therapy (M)  
Music  
Nursing (Career)  
Pre-Dentistry/Pre-Medicine/Pre-Pharmacy (M)  
Psychology  
Radiologic Technology (Career)  
Social Work

**Note:** M= Math-based major  
1= Dual Degree program with DeKalb Technical College  
2= Secondary Education-science and mathematics are math-based majors.  
All other programs are non math based.

## Degrees Awarded Summary, FY 2004-2009

Degrees Awarded Summary, FY 2004-2009							
Degree Level	2004	2005	2006	2007	2008	2009	%
Associate of Arts (Core Curriculum)	164	203	171	215	246	197	13.0%
Associate of Science	1,031	1,066	1,091	1,190	1,234	1,140	75.3%
Associate of Applied Science	16	11	12	10	19	10	0.7%
Certificate	8	7	8	2	4	8	0.5%
Career AS Degrees (Dental Hygiene, Nursing)	99	103	79	111	124	159	10.5%
<b>Total</b>	<b>1,318</b>	<b>1,390</b>	<b>1,361</b>	<b>1,528</b>	<b>1,627</b>	<b>1,514</b>	<b>100.0%</b>

Degrees Awarded, FY 2004 - 2009



## Degrees Awarded by Campus, FY 2007 – FY 2009

### Degree Awarded by Campus, FY 2007

Degree Level	AACC	ASCC	AAS	CERT	CAREER	Total	%
Clarkston	52	192	5	2	49	300	19.6
Lawrenceville	95	474	0	0	26	595	38.9
Dunwoody	49	345	2	0	36	432	28.3
Decatur	10	83	3	0	0	96	6.3
Newton/Rockdale	9	95	0	0	0	104	6.8
Alpharetta	0	1	0	0	0	1	0.1
<b>Total</b>	<b>215</b>	<b>1,190</b>	<b>10</b>	<b>2</b>	<b>111</b>	<b>1,528</b>	<b>100.0</b>

### Degree Awarded by Campus, FY 2008

Degree Level	AACC	ASCC	AAS	CERT	CAREER	Total	%
Clarkston	86	422	12	4	89	613	37.7
Lawrenceville	2	16	0	0	1	19	1.2
Dunwoody	117	563	1	0	34	715	43.9
Decatur	22	113	6	0	0	141	8.7
Newton/Rockdale	16	114	0	0	0	130	8.0
Alpharetta	3	6	0	0	0	9	0.6
<b>Total</b>	<b>246</b>	<b>1,234</b>	<b>19</b>	<b>4</b>	<b>124</b>	<b>1,627</b>	<b>100.0</b>

## Degrees Awarded by Campus, FY 2007 – FY 2009 continued

Degree Awarded by Campus, FY 2009							
Degree Level	AACC	ASCC	AAS	CERT	CAREER	Total	%
Clarkston	76	351	5	6	132	570	37.6
Dunwoody	91	532	3	2	27	655	43.3
Decatur	13	117	2	0	0	132	8.7
Newton	15	127	0	0	0	142	9.4
Alpharetta	2	10	0	0	0	12	0.8
Distance Learning	0	3	0	0	0	3	0.2
<b>Total</b>	<b>197</b>	<b>1,140</b>	<b>10</b>	<b>8</b>	<b>159</b>	<b>1,514</b>	<b>100.0</b>

## Degrees Awarded by Ethnicity and Gender, FY 2007 – FY 2009

### Degrees Awarded by Ethnicity and Gender, Georgia Perimeter College, FY 2007

	Female		Male		Total	
	#	%	#	%	#	%
Asian	94	60.3%	62	39.7%	156	10.2%
Black	299	74.2%	104	25.8%	403	26.4%
Hispanic	47	61.8%	29	38.2%	76	5.0%
Multiracial	62	70.5%	26	29.5%	88	5.8%
Native American	1	50.0%	1	50.0%	2	0.1%
White	525	65.4%	278	34.6%	803	52.6%
<b>Grand Total Awarded</b>	<b>1,028</b>	<b>67.3%</b>	<b>500</b>	<b>32.7%</b>	<b>1,528</b>	<b>100.0%</b>

### Degrees Awarded by Ethnicity and Gender, Georgia Perimeter College, FY 2008

	Female		Male		Total	
	#	%	#	%	#	%
Asian	84	54.5%	70	45.5%	154	9.5%
Black	379	74.8%	128	25.2%	507	31.2%
Hispanic	50	65.8%	26	34.2%	76	4.7%
Multiracial	65	63.7%	37	36.3%	102	6.3%
Native American	0	0.0%	2	100.0%	2	0.1%
Unknown/Undeclared	2	66.7%	1	33.3%	3	0.2%
White	489	62.5%	294	37.5%	783	48.1%
<b>Grand Total Awarded</b>	<b>1,069</b>	<b>65.7%</b>	<b>558</b>	<b>34.3%</b>	<b>1,627</b>	<b>100.0%</b>

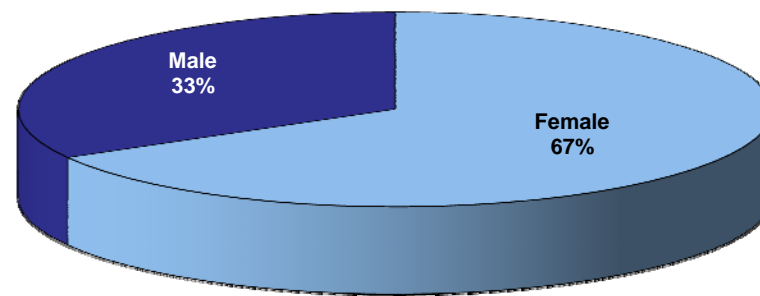
Source: USG by the Numbers website (<http://info.usg.edu>) and Office of Institutional Research and Planning.

## Degrees Awarded by Ethnicity and Gender, FY 2007 – FY 2009 cont.

Degrees Awarded by Ethnicity and Gender, Georgia Perimeter College, FY 2009						
	Female		Male		Total	
	#	%	#	%	#	%
<b>Asian</b>	85	55.9%	67	44.1%	152	10.0%
<b>Black</b>	358	72.8%	134	27.2%	492	32.5%
<b>Hispanic</b>	70	64.2%	39	35.8%	109	7.2%
<b>Multiracial</b>	70	72.2%	27	27.8%	97	6.4%
<b>Native American</b>	1	100.0%	0	0.0%	1	0.1%
<b>Unknown/Undeclared</b>	11	78.6%	3	21.4%	14	0.9%
<b>White</b>	415	63.9%	234	36.1%	649	42.9%
<b>Grand Total Awarded</b>	<b>1,010</b>	<b>66.7%</b>	<b>504</b>	<b>33.3%</b>	<b>1,514</b>	<b>100.0%</b>

**Note:** In the “Female” and “Male” gender columns, the percentage represents that particular gender’s proportion in the ethnic group (i.e. 57.9% of all degrees awarded to Asians were received by female Asian students). In the last column, the percent indicates the ethnic groups proportion of all degrees awarded (i.e. 32.5% of all degrees awarded were received by Black students).

Degrees Awarded by Gender, FY 2009



## Degrees Awarded by Major, FY 2007

Degree	Major	#
<b>Associate of Arts</b>		
AACC	Anthropology	2
AACC	Art	3
AACC	Biology	17
AACC	Chemistry	10
AACC	Communications	23
AACC	English	17
AACC	Foreign Language	26
AACC	History	11
AACC	Journalism	22
AACC	Mathematics	10
AACC	Philosophy	6
AACC	Physics	4
AACC	Political Science	16
AACC	Psychology	28
AACC	Sociology	14
AACC	Theater	6
AACC	Anthropology	2
<b>Total</b>		<b>215</b>

<b>Certificate</b>		
	Sign Language Interpret.	2
<b>Total</b>		<b>2</b>

Degree	Major	#
<b>Associate of Science</b>		
ASCC	Art	20
ASCC	Business Admin.	557
ASCC	Computer Science	17
ASCC	Criminal Justice	43
ASCC	Engineering	11
ASCC	General Studies	113
ASCC	Health &Physical Ed.	14
ASCC	Information Tech.	7
ASCC	Music	1
ASCC	Pre-Dentistry	3
ASCC	Pre-Medicine	25
ASCC	Pre-Pharmacy	37
ASCC	Psychology	97
ASCC	Social Work	21
ASCC	Teacher Education	224
<b>Total</b>		<b>1,190</b>

<b>Career Programs</b>		
ASDH	Dental Hygiene	36
ASN	Nursing	75
<b>Total</b>		<b>111</b>

Degree	Major	#
<b>Associate of Applied Science</b>		
	Marketing	
AASBC	Management	1
AASFMT	Fire Management	3
AASHC	Medical Assisting	2
AASHC	Medical Laboratory	
	Technology	1
	Library & Information	
AASLIT	Sci Tech	1
	Sign Language	
AASSLI	Interpreting AAS	2
<b>Total</b>		<b>10</b>

## Degrees Awarded by Major, FY 2008

Degree	Major	#
<b>Associate of Arts</b>		
AACC	Anthropology	1
AACC	Art	6
AACC	Biology	28
AACC	Chemistry	9
AACC	Communications	19
AACC	English	16
AACC	Foreign Language	37
AACC	Geology	1
AACC	History	7
AACC	Journalism	30
AACC	Mathematics	19
AACC	Philosophy	4
AACC	Physics	4
AACC	Political Science	22
AACC	Psychology	25
AACC	Sociology	12
AACC	Theater	6
<b>Total</b>		<b>246</b>

<b>Certificate</b>		
	Sign Language Interpret.	4
<b>Total</b>		<b>4</b>

Degree	Major	#
<b>Associate of Science</b>		
ASCC	Art	24
ASCC	Business Admin.	586
ASCC	Computer Science	20
ASCC	Criminal Justice	62
ASCC	Engineering	19
ASCC	General Studies	117
ASCC	Health &Physical Ed.	12
ASCC	Information Tech.	2
ASCC	Music	3
ASCC	Pre-Dentistry	3
ASCC	Pre-Medicine	15
ASCC	Pre-Pharmacy	30
ASCC	Psychology	92
ASCC	Social Work	22
ASCC	Teacher Education	227
<b>Total</b>		<b>1,234</b>

<b>Career Programs</b>		
ASDH	Dental Hygiene	34
ASN	Nursing	90
<b>Total</b>		<b>124</b>

Degree	Major	#
<b>Associate of Applied Science</b>		
AASBC	Business and Office Technology	1
AASFMT	Fire Management	7
AASHC	Medical Assisting	2
AASHC	Medical Laboratory Technology	2
AASLIT	Library & Information Sci Tech	1
AASSLI	Sign Language Interpreting AAS	6
<b>Total</b>		<b>19</b>

## Degrees Awarded by Major, FY 2009

Degree	Major	#
<b>Associate of Arts</b>		
AACC	Anthropology	7
AACC	Art	7
AACC	Biology	22
AACC	Chemistry	12
AACC	Communications	27
AACC	English	14
AACC	Film	2
AACC	Foreign Language	18
AACC	Geology	3
AACC	History	8
AACC	Journalism	21
AACC	Mathematics	11
AACC	Philosophy	1
AACC	Physics	3
AACC	Political Science	14
AACC	Psychology	14
AACC	Sociology	11
AACC	Theater	2
<b>Total</b>		<b>197</b>

Degree	Major	#
<b>Certificate</b>		
CER0	Library & Info Sci Tech	2
CER1	Sign Language Interpreting	6
<b>Total</b>		<b>8</b>

Degree	Major	#
<b>Associate of Science</b>		
ASCC	Art	27
ASCC	Business Admin.	562
ASCC	Computer Science	15
ASCC	Criminal Justice	53
ASCC	Engineering	12
ASCC	General Studies	92
ASCC	Health and Physical Education	20
ASCC	Health Sciences	7
ASCC	Music	1
ASCC	Pre-Dentistry	4
ASCC	Pre-Medicine	15
ASCC	Pre-Pharmacy	41
ASCC	Psychology	99
ASCC	Social Work	24
ASCC	Teacher Education	168
<b>Total</b>		<b>1,140</b>

Degree	Major	#
<b>Career Programs</b>		
ASDH	Dental Hygiene	27
ASN	Nursing	132
<b>Total</b>		<b>159</b>

Degree	Major	#
<b>Associate of Applied Science</b>		
AASFMT	Fire Management	3
AASHC	Medical Assisting	1
AASLIT	Library & Information Sci Tech	2
AASSLI	Sign Language Interpreting AAS	4
<b>Total</b>		<b>10</b>

## Students Taught by Division by Campus, Fall 2007

	Alpharetta	Clarkston	Decatur	Dunwoody	Lawrenceville	Newton	Distance Learning	Total
Business	72	623	430	1472	722	385	898	4,602
Dental Hygiene	NA	NA	NA	75	NA	NA	NA	75
ENSL & Foreign Language	17	703	119	1,119	335	108	160	2,561
Fine Arts	NA	448	104	542	239	108	170	1,611
Humanities	361	2,660	1,450	3,776	2,167	1,181	1,648	13,243
Mathematics	176	2,638	1,397	3,610	1,832	1,190	930	11,773
Nursing	NA	192	NA	NA	118	NA	30	340
Physical Education	14	619	470	914	424	271	732	3,444
Science	22	1,476	902	2,093	1,166	503	917	7,079
Sign Language Interpreting	NA	90	NA	8	NA	NA		98
Social Sciences	228	1,792	968	2,986	1,653	826	1,678	10,131
Others: HEDS (College Success)	NA	138	141	189	33	83	NA	584
<b>Total</b>	<b>890</b>	<b>11,379</b>	<b>5,981</b>	<b>16,784</b>	<b>8,689</b>	<b>4,655</b>	<b>7,163</b>	<b>55,541</b>

Note: \* Performing Arts students are not included.

\*\*The totals are total students enrolled in all divisions for each campus/center and GPC.

## Students Taught by Division by Campus, Fall 2008

	Alpharetta	Clarkston	Decatur	Dunwoody	Lawrenceville	Newton	Distance Learning	Total
Business	216	698	452	1568	10	426	1130	4,500
Dental Hygiene	NA	NA	NA	63	NA	NA	NA	63
ENSL & Foreign Language	39	722	144	1223	NA	104	359	2,591
Fine Arts	NA	596	178	555	NA	140	206	1,675
Humanities	532	3301	1814	4324	74	1471	2149	13,665
Mathematics	315	2880	1625	4129	66	1566	1359	11,940
Nursing	NA	189	NA	54	123	NA	35	401
Physical Education	72	709	383	1084	NA	323	927	3,498
Science	87	1708	1119	2376	138	664	1223	7,315
Sign Language Interpreting	NA	87	NA	NA	NA	NA	NA	87
Social Sciences	469	2093	1183	3705	68	1142	2562	11,222
Others: HEDS (College Success)	NA	200	222	222	NA	89	NA	733
<b>Total</b>	<b>1,730</b>	<b>13,183</b>	<b>7,120</b>	<b>19,303</b>	<b>479</b>	<b>5,925</b>	<b>9,950</b>	<b>57,690</b>

Note: \* Performing Arts students are not included.

\*\*The totals are total students enrolled in all divisions for each campus/center and GPC.

## Students Taught by Division by Campus, Fall 2009

	Alpharetta	Clarkston	Decatur	Dunwoody	Newton	Distance Learning	Total
Business	162	688	497	1,749	360	1,358	4,814
Dental Hygiene	NA	NA	NA	53	NA	NA	53
ENSL & Foreign Language	33	888	151	1,261	112	453	2,898
Fine Arts	NA	583	194	679	180	257	1,893
Humanities	639	3,920	2,001	4,973	1,681	2,572	15,786
Mathematics	437	3,062	1,768	4,601	1,718	1,720	13,306
Nursing	NA	360	NA	NA	NA	218	578
Physical Education	65	794	576	1,221	354	1,078	4,088
Science	111	2,063	1,247	2,465	972	1,405	8,263
Sign Language Interpreting	NA	127	NA	NA	NA	NA	127
Social Sciences	485	2,366	1,426	4,017	1,511	2,758	12,563
Others: HEDS (College Success)	23	253	237	267	103	NA	883
<b>Total</b>	<b>1,932</b>	<b>14,851</b>	<b>7,860</b>	<b>21,019</b>	<b>6,888</b>	<b>11,819</b>	<b>65,252</b>

Note: \* Performing Arts students are not included.

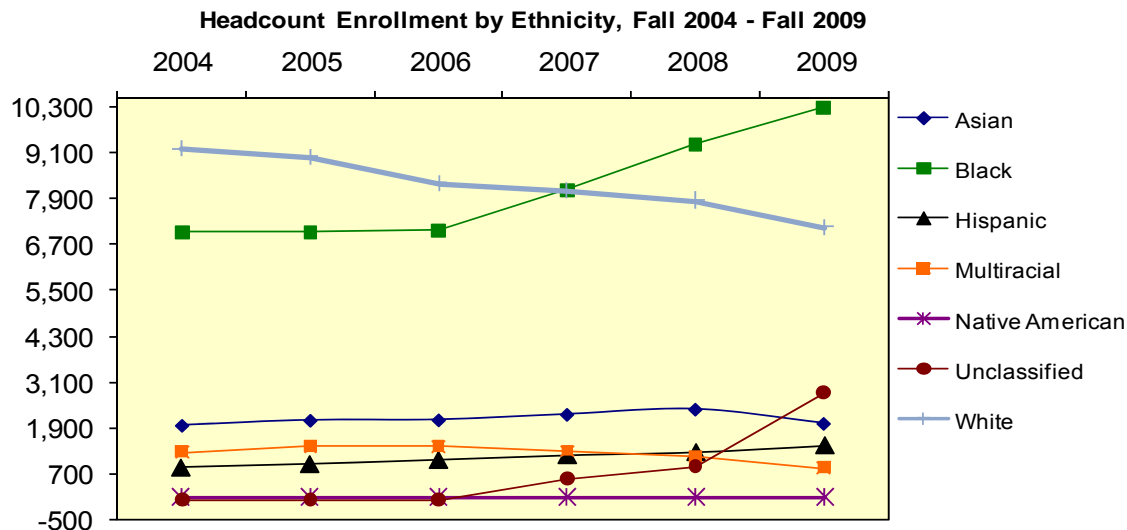
\*\*The totals are total students enrolled in all divisions for each campus/center and GPC.

# Students

---

# Enrollment Summary I - GPC All Campuses, Fall 2004-2009

On-Campus Student Enrollment							
	2004	2005	2006	2007	2008	2009	2009%
Total Headcount	20,316	20,461	19,955	21,473	22,808	24,549	100.0
Full-Time	45%	45%	45%	43%	43%	47%	
Part-Time	55%	55%	55%	57%	57%	53%	
Full-Time Equivalent	15,395	15,327	14,964	15,954	16,908	18,795	-
On-Campus Student Demographics							
Headcount by Gender:							
Male	7,659	7,805	7,642	8,236	8,753	9,498	38.7
Female	12,657	12,656	12,313	13,237	14,055	15,051	61.3
Headcount by Ethnicity:							
Asian	1,952	2,083	2,094	2,235	2,367	2,002	8.2
Black	7,017	7,009	7,063	8,098	9,298	10,270	41.8
Hispanic	842	933	1,043	1,168	1,252	1,433	5.8
Multiracial	1,246	1,389	1,406	1,274	1,122	832	3.4
Native American	62	62	63	50	56	71	0.3
Unclassified	0	0	0	561	871	2,807	11.4
White	9,197	8,985	8,286	8,087	7,842	7,134	29.1
Others:							
Senior Citizens	33	40	48	50	42	61	0.2
Non-U.S.	3,324	3,465	3,417	3,592	3,727	3,866	15.7
Average Age	25.4	25.1	24.9	25.1	25.1	24.8	-
Median Age	23	22	22	22	21	22	-



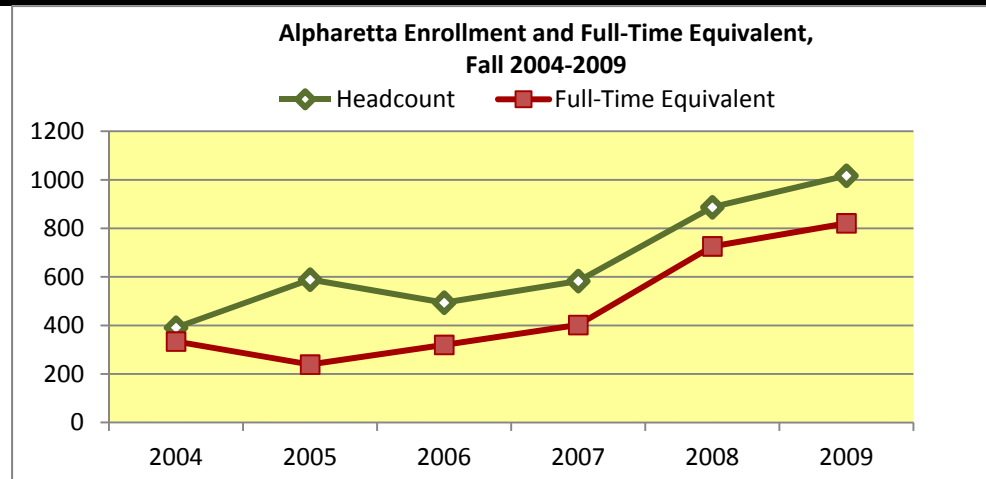
## Enrollment Summary II - GPC All Campuses, Fall 2004-2009

<b>On-Campus Enrollment by Schedule</b>							
	<b>2004</b>	<b>2005</b>	<b>2006</b>	<b>2007</b>	<b>2008</b>	<b>2009</b>	<b>2009 %</b>
Day	16,671	16,318	16,694	16,373	16,295	19,003	77.4
Evening	10,467	9,724	9,335	9,707	8,821	9,267	37.7
Weekend	3,485	3,454	3,014	2,980	2,193	2,797	11.4
<b>On-Campus Enrollment by Classification</b>							
Learning Support/Developmental Studies	4,823	4,715	4,595	5,078	5,481	5,713	23.3
Joint Enrollment	628	900	786	906	922	769	3.1
Freshman	11,963	11,890	11,834	12,663	13,736	14,855	60.5
Sophomore	7,216	7,218	6,908	7,373	7,490	8,182	33.3
Transient	219	199	161	222	321	386	1.6
Unclassified	290	254	266	309	339	357	1.5
<b>On-Campus New Student Enrollment by Classification</b>							
Learning Support/Developmental Studies	2,677	2,709	2,422	2,933	3,282	3,289	13.4
Joint Enrollment	598	879	761	847	892	711	2.9
Freshman	3,312	3,387	3,184	3,400	4,161	4,324	17.6
Transfer	1,818	1,728	1,122	1,853	1,968	1,947	7.9
Transient	127	118	84	128	242	299	1.2
Unclassified	147	144	133	179	169	172	0.7
Total	6,861	6,256	5,625	6,407	7,432	7,453	30.4
<b>On-Campus Students Needing Learning Support</b>							
Math	4,184	4,106	4,029	4,421	4,618	4,758	19.4
English	1,368	1,254	1,145	1,325	1,643	1,875	7.6
Reading	948	966	753	988	1,329	1,392	5.7
Unduplicated Head Count	4,823	4,715	4,595	5,078	5,481	5,713	23.3
<b>On-Campus Student Enrollment by Residence</b>							
Georgia	19,105	19,264	18,648	19,967	21,038	22,577	92.0
Out-of-State	570	969	622	1,439	1,363	1,630	6.6
Non-Resident Tuition Waived	641	228	163	67	407	342	1.4

Source: USG by the Numbers website (<http://info.usg.edu>) and Office of Institutional Research and Planning.

# Enrollment of GPC Alpharetta, Fall 2004-2009

<b>On-Campus Student Enrollment</b>							
	<b>2004</b>	<b>2005</b>	<b>2006</b>	<b>2007</b>	<b>2008</b>	<b>2009</b>	<b>2009 %</b>
Total Headcount	391	589	494	583	887	1,017	100.05
Full-Time	64%	10%	41%	46%	60%	59%	59.1
Part-Time	36%	91%	59%	54%	40%	41%	40.9
Full-Time Equivalent	334	239	320	402	726	821	-
<b>On-Campus Student Demographics</b>							
Headcount by Gender:							
Male	186	289	224	305	473	537	52.8
Female	205	300	270	278	414	480	47.2
Headcount by Ethnicity:							
Asian	20	52	51	60	77	81	8.0
Black	30	32	32	38	96	128	12.6
Hispanic	11	26	22	33	71	80	7.9
Multiracial	30	38	28	33	50	32	3.1
Native American	3	5	1	1	5	9	0.9
Unclassified	0	0	0		59	177	17.4
White	297	436	365	386	529	510	50.1
Others:							
Senior Citizens	0	0	1	0	0	1	0.1
Non-U.S.	290	49	39	53	113	113	11.1
Average Age	23.2	20.0	19.9	20.5	21.2	21.7	-
Median Age	21	18	19	19	20	19	-



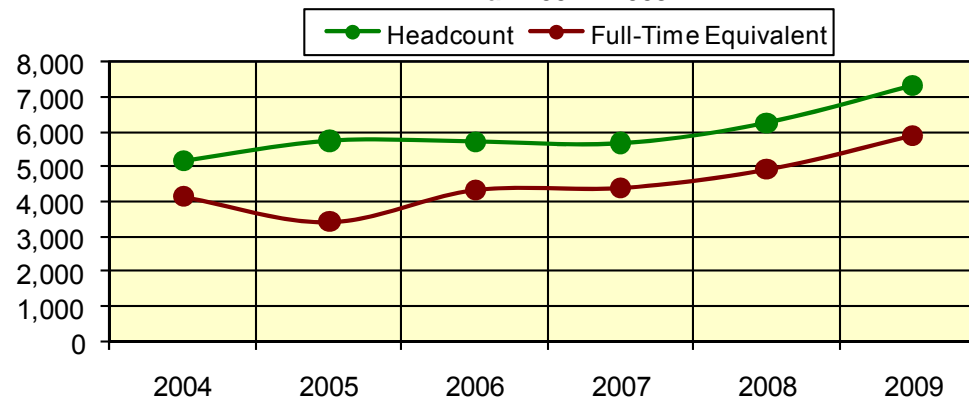
## Enrollment of GPC Alpharetta, Fall 2004-2009 (Continued)

<b>On-Campus Enrollment by Schedule</b>							
	<b>2004</b>	<b>2005</b>	<b>2006</b>	<b>2007</b>	<b>2008</b>	<b>2009</b>	<b>2009 %</b>
Day	391	331	303	405	854	952	93.6
Evening	0	72	57	39	276	344	33.8
Weekend	0	36	33	39	39	88	8.7
<b>On-Campus Enrollment by Classification</b>							
Learning Support/Developmental Studies	123	115	106	147	226	242	23.8
Joint Enrollment	14	263	183	167	65	97	9.5
Freshman	186	140	146	208	411	721	70.9
Sophomore	63	62	57	54	173	187	18.4
Transient	2	4	2	5	7	7	0.7
Unclassified	0	0	0	2	5	5	0.5
<b>On-Campus New Student Enrollment by Classification</b>							
Learning Support/Developmental Studies	82	91	68	102	162	147	14.5
Joint Enrollment	12	263	183	164	64	96	9.4
Freshman	46	115	94	58	127	275	27.0
Transfer	41	43	39	34	88	96	9.4
Transient	1	4	2	4	5	5	0.5
Unclassified	0	0	1	2	1	3	0.3
Total	182	516	387	364	447	475	46.7
<b>On-Campus Students Needing Learning Support</b>							
Math	113	108	102	139	191	197	19.4
English	20	15	10	19	62	69	6.8
Reading	18	17	5	15	59	46	4.5
Unduplicated Head Count	123	115	106	147	226	242	23.8
<b>On-Campus Student Enrollment by Residence</b>							
Georgia	369	574	471	546	833	948	93.2
Out-of-State	18	14	19	35	43	52	5.1
Non-Resident Tuition Waived	1	1	4	2	11	17	1.7

# Enrollment of GPC Clarkston, Fall 2004-2009

On-Campus Student Enrollment							
	2004	2005	2006	2007	2008	2009	2009 %
Total Headcount	5,185	5,756	5,735	5,682	6,270	7,331	100.0
Full-Time	37%	25%	40.9%	45%	47%	48%	
Part-Time	63%	75%	59.1%	56%	54%	52%	
Full-Time Equivalent	4,127	3,417	4,325	4,385	4,901	5,864	-
On-Campus Student Demographics							
Headcount by Gender:							
Male	1,772	1,955	1,923	2,055	2,420	2,791	38.1
Female	3,413	3,801	3,812	3,627	3,850	4,540	61.9
Headcount by Ethnicity:							
Asian	541	546	477	624	701	604	8.2
Black	3,067	3,471	3,361	3,424	3,632	4,293	58.6
Hispanic	123	149	174	175	229	259	3.5
Multiracial	331	383	376	359	328	284	3.9
Native American	18	11	12	13	15	15	0.2
Unclassified	0	0	0	110	234	685	9.3
White	1,105	1,196	1,335	977	1,131	1,191	16.2
Others:							
Senior Citizens	15	15	11	17	18	25	0.3
Non-U.S.	1,170	1,199	1,016	1,262	1,378	1,470	20.1
Average Age	28.3	26.6	26.1	25.8	24.9	25.4	-
Median Age	26	24	23	23	22	22	-

Clarkston Enrollment and Full-Time Equivalent, Fall 2004 - 2009



## Enrollment of GPC Clarkston, Fall 2004-2009 (Continued)

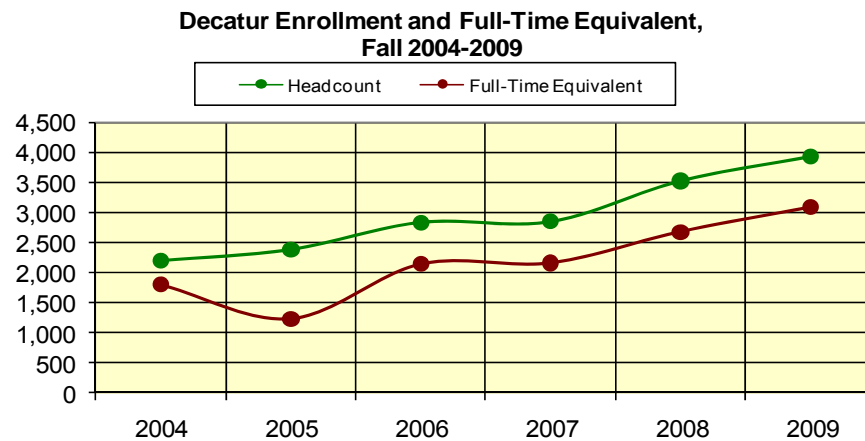
<b>On-Campus Enrollment by Schedule</b>							
	<b>2004</b>	<b>2005</b>	<b>2006</b>	<b>2007</b>	<b>2008</b>	<b>2009</b>	<b>2009%</b>
Day	4,332	4,604	4,427	4,830	5,334	6,485	88.5
Evening	2,312	2,644	2,434	1,118	3,096	3,226	44.0
Weekend	778	1,023	891	862	733	996	13.6
<b>On-Campus Enrollment by Classification</b>							
Learning Support/Developmental Studies	1,323	1,367	1,335	1,501	1,639	1,824	24.9
Joint Enrollment	67	48	30	45	114	98	1.3
Freshman	1,669	1,821	3,180	1,842	2,138	4,273	58.3
Sophomore	1,981	2,307	2,385	2,165	2,274	2,845	38.8
Transient	57	50	56	37	26	31	0.4
Unclassified	91	67	78	91	79	84	1.1
<b>On-Campus New Student Enrollment by Classification</b>							
Learning Support/Developmental Studies	623	868	645	871	923	1,013	13.8
Joint Enrollment	60	44	29	31	109	71	1.0
Freshman	196	743	685	279	384	1,222	16.7
Transfer	279	542	476	292	362	580	7.9
Transient	37	43	31	23	13	16	0.2
Unclassified	42	45	48	58	39	45	0.6
Total	1,237	2,285	1,914	1,554	1,830	1,934	26.4
<b>On-Campus Students Needing Learning Support</b>							
Math	1,176	1,230	1,218	1,319	1,393	1,470	20.1
English	356	340	316	434	496	684	9.3
Reading	236	254	214	340	414	497	6.8
Unduplicated Head Count	1,323	1,367	1,335	1,501	1,639	1,824	24.9
<b>On-Campus Student Enrollment by Residence</b>							
Georgia	4,881	5,427	5,429	5,223	5,756	6,728	91.8
Out-of-State	249	279	232	355	385	471	6.4
Non-Resident Tuition Waived	4,332	4,604	4,427	104	129	132	1.8

Source: Office of Institutional Research and Planning

# Enrollment of GPC Decatur, Fall 2004-2009

On-Campus Student Enrollment							
	2004	2005	2006	2007	2008	2009	2009 %
Total Headcount	2,200	2,384	2,831	2,843	3,514	3,916	100.0
Full-Time	36%	17%	40.3%	42%	43%	47%	
Part-Time	64%	83%	59.7%	58%	57%	53%	
Full-Time Equivalent	1,795	1,231	2,137	2,157	2,675	3,081	-

On-Campus Student Demographics								
Headcount by Gender:	Male	641	673	788	828	1,093	1,235	31.5
	Female	1,559	1,711	2,043	2,015	2,421	2,681	68.5
Headcount by Ethnicity:	Asian	72	126	144	110	155	146	3.7
	Black	1,757	1,821	2,049	2,325	2,762	2,994	76.5
	Hispanic	32	26	43	41	66	75	1.9
	Multiracial	106	145	165	141	143	107	2.7
	Native American	2	7	9	3	5	8	0.2
	Unclassified	0	0	0	53	95	282	7.2
	White	231	259	430	170	288	304	7.8
Others:	Senior Citizens	4	3	5	11	7	17	0.4
	Non-U.S.	162	242	271	255	323	328	8.4
	Average Age	27.0	26.3	25.9	25.6	25.1	25.6	-
	Median Age	24	23	41	22	22	22	-



## Enrollment of GPC Decatur, Fall 2004-2009 (Continued)

<b>On-Campus Enrollment by Schedule</b>							
	<b>2004</b>	<b>2005</b>	<b>2006</b>	<b>2007</b>	<b>2008</b>	<b>2009</b>	<b>2009 %</b>
Day	1,604	1,957	2,233	2,494	2,982	3,414	87.2
Evening	834	1,094	1,230	524	1,557	1,693	43.2
Weekend	145	466	474	572	572	898	22.9
<b>On-Campus Enrollment by Classification</b>							
Learning Support/Developmental Studies	733	744	817	973	1,255	1,279	32.7
Joint Enrollment	13	26	26	23	20	4	0.1
Freshman	713	658	823	824	1,014	2,425	61.9
Sophomore	693	888	1,100	955	1,138	1,303	33.3
Transient	21	12	21	22	21	118	3.0
Unclassified	27	35	40	46	65	66	1.7
<b>On-Campus New Student Enrollment by Classification</b>							
Learning Support/Developmental Studies	367	457	390	568	749	718	18.3
Joint Enrollment	13	22	24	22	18	2	0.1
Freshman	75	350	377	67	122	662	16.9
Transfer	130	188	220	149	227	339	8.7
Transient	15	12	11	15	11	106	2.7
Unclassified	14	18	20	31	37	30	0.8
<b>Total</b>	<b>614</b>	<b>1,047</b>	<b>1,042</b>	<b>852</b>	<b>1,164</b>	<b>1,139</b>	<b>29.1</b>
<b>On-Campus Students Needing Learning Support</b>							
Math	613	636	687	811	1,030	1,051	26.8
English	254	273	277	369	439	513	13.1
Reading	209	203	207	278	402	408	10.4
Unduplicated Head Count	733	744	817	973	1,255	1,279	32.7
<b>On-Campus Student Enrollment by Residence</b>							
Georgia	2,083	2,316	2,708	2,714	3,334	3,676	93.9
Out-of-State	95	53	92	92	155	198	5.1
Non-Resident Tuition Waived	22	15	27	37	25	42	1.1

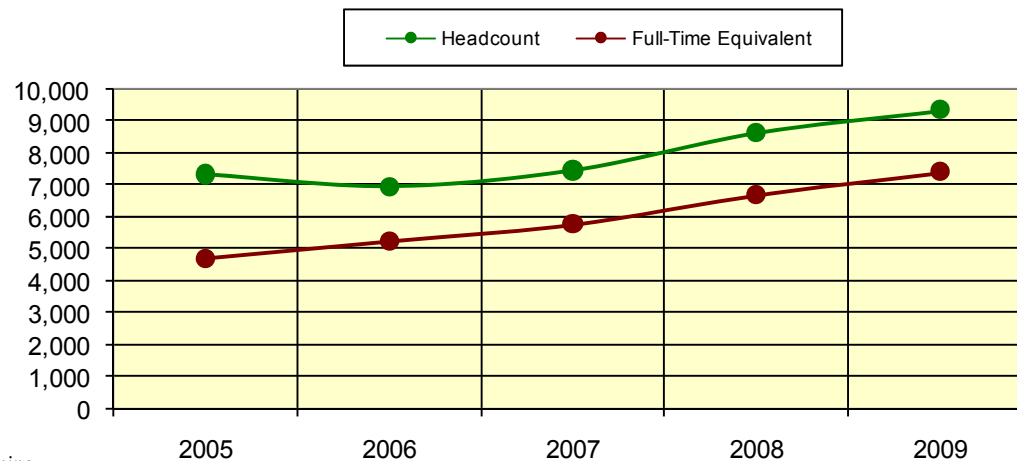
Source: Office of Institutional Research and Planning

# Enrollment of GPC Dunwoody, Fall 2004-2009

	2004	2005	2006	2007	2008	2009	2009%
Total Headcount	6,558	7,363	6,986	7,484	8,656	9,347	100.0
Full-Time	48%	32%	44%	48%	49%	52%	52.3
Part-Time	52%	68%	56%	52%	51%	48%	47.7
Full-Time Equivalent	5,088	4,720	5,255	5,775	6,697	7,401	-
Headcount by Gender:							
Male	2,796	3,101	2,835	3,390	3,974	4,255	45.5
Female	3,762	4,262	4,151	4,094	4,682	5,092	54.5
Headcount by Ethnicity:							
Asian	880	939	839	1,162	1,566	1,325	14.2
Black	1,592	1,768	1,755	1,554	1,877	2,117	22.6
Hispanic	406	442	450	628	831	979	10.5
Multiracial	462	540	479	485	485	315	3.4
Native American	33	32	26	20	20	29	0.3
Unclassified	0	0	0	259	347	1,482	15.9
White	3,185	3,642	3,503	3,376	3,530	3,100	33.2
Others:							
Senior Citizens	13	13	17	16	15	23	0.2
Non-U.S.	1,487	1,552	1,258	1,727	2,186	2,271	24.3
Average Age	25.8	24.8	24.6	23.8	23.4	23.6	-
Median Age	24	22	22	22	21	21	-

Note: For the years 2004 through 2009 the chart is for Dunwoody only.

Dunwoody Enrollment and Full-Time Equivalent, Fall 2004-2009



Source: Office of Institutional Research and Planning

## Enrollment of GPC Dunwoody, Fall 2004-2009 (Continued)

<b>On-Campus Enrollment by Schedule</b>							
	<b>2004</b>	<b>2005</b>	<b>2006</b>	<b>2007</b>	<b>2008</b>	<b>2009</b>	<b>2009 %</b>
Day	5,399	5,833	5,255	6,116	7,075	8,268	88.5
Evening	3,228	3,522	3,285	1,304	4,069	4,332	46.3
Weekend	1,219	1,440	1,183	1,247	1,247	1,379	14.8
<b>On-Campus Enrollment by Classification</b>							
Learning Support/Developmental Studies	1,397	1,471	1,327	1,530	1,684	1,775	19.0
Joint Enrollment	158	337	336	447	555	488	5.2
Freshman	2,474	2,645	2,607	2,945	3,385	5,515	59.0
Sophomore	2,334	2,678	2,540	2,381	2,841	3,118	33.4
Transient	68	77	58	59	41	57	0.6
Unclassified	127	114	114	121	150	169	1.8
<b>On-Campus New Student Enrollment by Classification</b>							
Learning Support/Developmental Studies	779	934	695	965	967	1,005	10.8
Joint Enrollment	136	335	327	439	551	484	5.2
Freshman	346	1002	881	613	659	1,660	17.8
Transfer	412	666	566	412	415	600	6.4
Transient	42	66	27	35	28	41	0.4
Unclassified	61	82	50	70	68	56	0.6
Total	1,776	3,085	2,546	2,534	2,688	2,841	30.4
<b>On-Campus Students Needing Learning Support</b>							
Math	1188	1,285	1,170	1,314	1,393	1,433	15.3
English	363	324	279	354	484	550	5.9
Reading	254	264	168	253	364	401	4.3
Unduplicated Head Count	1,397	1,471	1,327	1,530	1,684	1,775	19.0
<b>On-Campus Student Enrollment by Residence</b>							
Georgia	5,846	6,746	6,538	6,733	7,674	8,343	89.3
Out-of-State	577	548	362	613	744	768	8.2
Non-Resident Tuition Waived	135	69	86	138	238	236	2.5

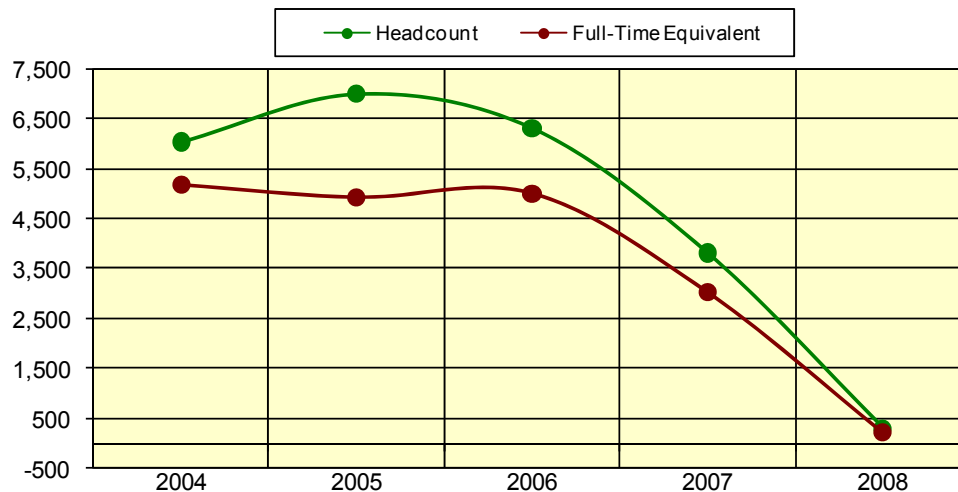
Note: For the years 2004 through 2009, there are two numbers. The first one is for Dunwoody and the second Alpharetta, respectively.

Source: Office of Institutional Research and Planning

# Enrollment of GPC Lawrenceville, Fall 2004-2008

On-Campus Student Enrollment						
	2004	2005	2006	2007	2008	2008%
Total Headcount	6,022	6,982	6,302	3,809	314	100.0
Full-Time	53%	42%	51.9%	51%	21%	
Part-Time	47%	58%	48.0%	49%	79%	
Full-Time Equivalent	5,168	4,918	4,999	3,025	222	-
On Campus Student Demographics						
Headcount by Gender:						
Male	2,426	2,706	2,575	1,574	41	13.1
Female	3,596	4,276	3,727	2,235	273	86.9
Headcount by Ethnicity:						
Asian	630	843	807	646	33	10.5
Black	802	1,217	1,149	665	75	23.9
Hispanic	306	420	433	298	16	5.1
Multiracial	338	475	20	242	12	3.8
Native American	15	20	384	6	1	0.3
Unclassified	0	0	0	52	8	2.5
White	3,931	4,007	3,543	1,900	169	53.8
Others:						
Senior Citizens	2	2	3	2	0	0
Non-U.S.	767	1,117	967	797	41	13.1
Average Age	24.5	24.0	23.5	24.0	27.5	-
Median Age	22	21	21	21	26	-

Lawrenceville Enrollment and Full-Time Equivalent, Fall 2004-2008



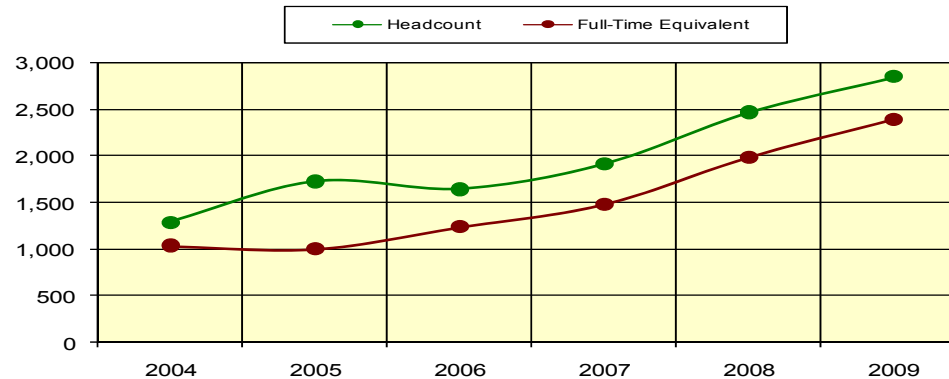
## Enrollment of GPC Lawrenceville, Fall 2004-2008 (Continued)

<b>On-Campus Enrollment by Schedule</b>						
	<b>2004</b>	<b>2005</b>	<b>2006</b>	<b>2007</b>	<b>2008</b>	<b>2008 %</b>
Day	5,382	5,736	5,165	3,285	277	88.2
Evening	3,557	3,633	3,260	869	78	24.8
Weekend	1,221	1,447	1,268	784	9	2.9
<b>On-Campus Enrollment by Classification</b>						
Learning Support/Developmental Studies	1,201	1,238	1,149	463	2	0.6
Joint Enrollment	211	160	126	98	57	18.2
Freshman	2,341	2,692	2,470	1,466	67	21.3
Sophomore	2,151	2,703	2,426	1,724	187	59.6
Transient	68	77	54	33	0	0.0
Unclassified	50	80	72	24	1	0.3
<b>On-Campus New Student Enrollment by Classification</b>						
Learning Support/Developmental Studies	765	856	633	105	1	0.3
Joint Enrollment	204	154	119	90	56	17.8
Freshman	626	1,260	1,096	33	6	1.9
Transfer	310	474	356	95	13	4.1
Transient	33	62	25	12	0	0.0
Unclassified	23	51	38	5	1	0.3
<b>Total</b>	<b>1,961</b>	<b>2,857</b>	<b>2,267</b>	<b>340</b>	<b>77</b>	<b>24.5</b>
<b>On-Campus Students Needing Learning Support</b>						
Math	1,030	1,056	992	407	2	0.6
English	351	345	271	98	1	0.3
Reading	221	249	163	42	0	0.0
Unduplicated Head Count	1,201	1,238	1,149	463	2	0.6
<b>On-Campus Student Enrollment by Residence</b>						
Georgia	5,843	6,749	6,078	3,594	305	97.1
Out-of-State	164	212	197	176	4	1.3
Non-Resident Tuition Waived	15	21	27	39	5	1.6

# Enrollment of GPC Rockdale/Newton, Fall 2004-2009

On-Campus Student Enrollment								
	Rockdale	Rockdale	Rockdale	Newton	Newton	Newton		
	2004	2005	2006	2007	2008	2009	2009 %	
Total Headcount	1,291	1,724	1,643	1,911	2,464	2,841	100.0	
Full-Time	41%	29%	28.5%	50%	55%	61%		
Part-Time	59%	72%	71.5%	49%	45%	39%		
Full-Time Equivalent	1,034	1,003	1,236	1,480	1,981	2,384	-	
On Campus Student Demographics								
Headcount by Gender:	Male	418	506	507	688	930	1,067	37.6
	Female	873	1,218	1,136	1,223	1,534	1,774	62.4
Headcount by Ethnicity:	Asian	14	28	33	38	61	56	
	Black	264	568	573	523	669	823	29.0
	Hispanic	30	30	37	52	65	83	2.9
	Multiracial	51	97	90	74	74	73	2.6
	Native American	1	3	2	6	9	10	0.4
	Unclassified	0	0	0	57	90	304	10.7
	White	931	998	913	1,161	1,496	1,492	52.5
Others:	Senior Citizens	1	2	1	4	5	2	0.1
	Non-U.S.	29	77	77	64	91	120	4.2
	Average Age	25.7	25.3	24.6	23.3	22.7	23.1	-
	Median Age	22	22	21	20	20	20	-

Rockdale/Newton Enrollment and FTE, Fall 2004-2009



Source: Office of Institutional Research and Planning

## Enrollment of GPC Rockdale/Newton, Fall 2004-2009 (Continued)

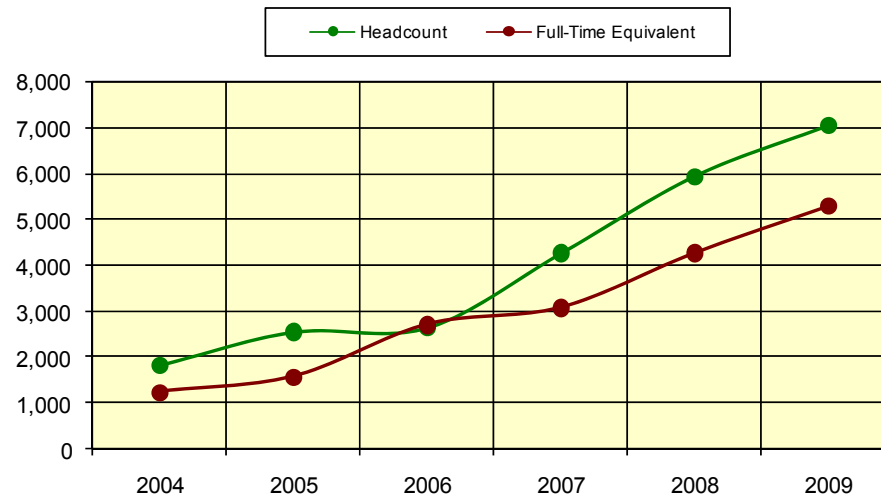
<b>On-Campus Enrollment by Schedule</b>							
	<b>2004</b>	<b>2005</b>	<b>2006</b>	<b>2007</b>	<b>2008</b>	<b>2009</b>	<b>2009%</b>
Day	1,029	1,242	1,205	1,574	1,891	2,446	86.1
Evening	902	1,015	969	275	1,161	1,301	45.8
Weekend	122	204	184	191	191	151	5.3
<b>On-Campus Enrollment by Classification</b>							
Learning Support/Developmental Studies	312	403	428	593	789	846	29.8
Joint Enrollment	102	85	89	110	106	81	2.9
Freshman	455	646	562	719	970	1,899	66.8
Sophomore	408	558	549	471	578	758	26.7
Transient	7	9	6	10	11	88	3.1
Unclassified	7	11	8	7	10	15	0.5
<b>On-Campus New Student Enrollment by Classification</b>							
Learning Support/Developmental Studies	208	304	245	421	550	530	18.7
Joint Enrollment	99	82	83	102	97	59	2.1
Freshman	87	320	282	172	316	723	25.4
Transfer	56	162	111	135	128	196	6.9
Transient	4	6	4	4	8	82	2.9
Unclassified	2	5	4	7	6	5	0.2
<b>Total</b>	<b>456</b>	<b>879</b>	<b>729</b>	<b>841</b>	<b>1,105</b>	<b>1,065</b>	<b>37.5</b>
<b>On-Campus Students Needing Learning Support</b>							
Math	277	365	377	523	670	745	26.2
English	91	104	95	168	254	257	9.0
Reading	55	80	63	141	206	208	7.3
Unduplicated Head Count	312	403	428	593	789	846	29.8
<b>On-Campus Student Enrollment by Residence</b>							
Georgia	1,275	1,694	1,602	1,866	2,408	2,775	97.7
Out-of-State	13	26	34	42	47	58	2.0
Non-Resident Tuition Waived	3	4	6	3	9	8	0.3

Source: Office of Institutional Research and Planning

# Enrollment of GPC Online/Distance Education, Fall 2004-2009

Off-Campus/Distance Education Student Enrollment							
	2004	2005	2006	2007	2008	2009	2009%
Total Headcount	1,839	2,555	2,649	4,263	5,935	7,034	100.0
Full-Time	31%	27%	35.7%	38%	38%	42%	
Part-Time	69%	73%	64.3%	62%	62%	58%	
Full-Time Equivalent	1,248	1,581	2,718	3,086	4,276	5,297	-
Off-Campus/Distance Education Student Demographics							
Headcount by Gender:							
Male	515	758	683	3,051	1,731	2,066	29.4
Female	1,324	1,797	1,966	1,212	4,204	4,968	70.6
Headcount by Ethnicity:							
Asian	96	154	136	260	440	444	6.3
Black	560	692	879	1,455	2,157	2,802	39.8
Hispanic	41	72	104	174	255	332	4.7
Multiracial	106	161	181	276	297	252	3.6
Native American	5	10	8	10	20	21	0.3
Unclassified	0	0	0	97	228	624	
White	1,031	1,466	1,341	1,991	2,538	2,559	36.4
Others:							
Senior Citizens	0	1	1	1	2	8	0.1
Non-U.S.	155	203	70	423	715	845	12.0
Average Age	26.2	25.6	27.2	27.1	26.6	27.0	-
Median Age	23	23	25	25	24	25	-

Distance Learning Enrollment and Full-Time Equivalent, Fall 2004-2009



## Enrollment of GPC Online/Distance Ed., Fall 2004-2009 (Cont.)

<b>Off-Campus/Distance Education Enrollment by Schedule</b>							
	<b>2004</b>	<b>2005</b>	<b>2006</b>	<b>2007</b>	<b>2008</b>	<b>2009</b>	<b>2009%</b>
Day	990	1,023	1,327	2,069	2,571	3,538	50.3
Evening	768	779	467	756	1,675	1,864	26.5
Weekend	291	348	387	570	570	601	8.5
<b>Off-Campus/Distance Education Enrollment by Classification</b>							
Learning Support/Developmental Studies	230	237	307	577	727	1,051	14.9
Joint Enrollment	117	480	5	12	25	17	0.2
Freshman	532	662	847	1,343	2,040	3,354	47.7
Sophomore	876	1,075	1,389	2,146	2,902	3,377	48.0
Transient	44	43	54	99	111	140	2.0
Unclassified	40	52	47	86	130	146	2.1
<b>Off-Campus/Distance Education New Student Enrollment by Classification</b>							
Learning Support/Developmental Studies	112	107	139	289	341	483	6.9
Joint Enrollment	115	477	3	5	20	12	0.2
Freshman	87	120	55	88	208	542	7.7
Transfer	96	129	155	278	435	674	9.6
Transient	29	27	30	59	63	85	1.2
Unclassified	24	23	27	47	62	66	0.9
Total	463	883	409	766	1,129	1,379	19.6
<b>Off-Campus/Distance Education Students Needing Learning Support</b>							
Math	222	228	239	554	691	981	13.9
English	29	25	25	45	76	151	2.1
Reading	16	10	12	22	59	99	1.4
Unduplicated Head Count	230	237	307	577	727	1,051	14.9
<b>Off-Campus/Distance Education Student Enrollment by Residence</b>							
Georgia	1,735	2,470	2,480	3,990	5,491	6,474	92.0
Out-of-State	91	77	140	226	368	478	6.8
Non-Resident Tuition Waived	13	8	29	47	76	82	1.2

# Enrollment by Age Group, Fall 2005-2009; and by County, Fall 2007-2009

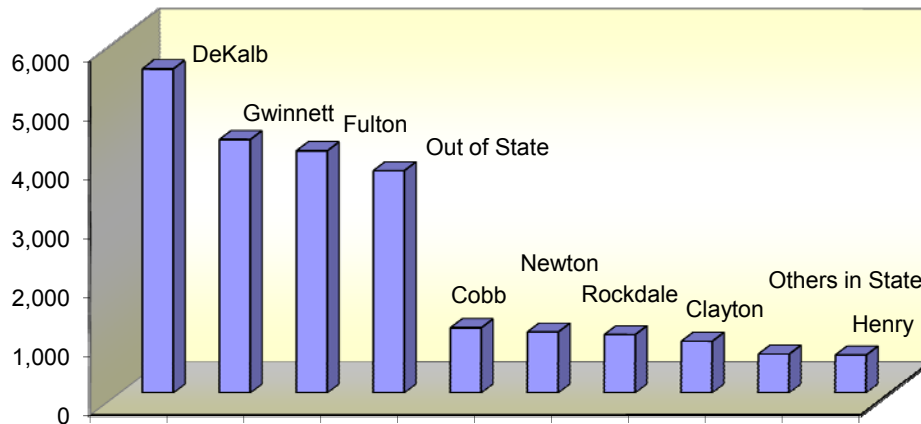
**Enrollment by Age Group, Fall 2005 to 2009**

	2005	2006	2007	2008	2009
Under 18	875	960	1,080	1,099	1,109
18-19	4,580	4,864	5,116	5,651	5,980
20-21	4,485	4,275	4,527	4,775	4,907
22-24	3,532	3,215	3,582	3,643	3,903
25-29	2,940	2,825	3,081	3,248	3,542
30-34	1,680	1,484	1,663	1,771	2,080
35-39	1,032	1,056	1,088	1,218	1,366
40-49	1,049	982	1,011	1,077	1,283
50-64	255	259	275	284	333
65 +	33	35	50	42	46
<b>Total</b>	<b>20,461</b>	<b>19,955</b>	<b>21,473</b>	<b>22,808</b>	<b>24,549</b>

**Enrollment by County, Fall 2007- 2009**

County	Enrollment			
	2007	2008	2009	2009%
Barrow	110	77	65	0.3
Cherokee	168	218	258	1.1
Clarke	24	27	41	0.2
Clayton	580	755	878	3.6
Cobb	792	962	1,106	4.5
DeKalb	4,670	5,109	5,496	22.4
Douglas	103	122	131	0.5
Fayette	84	96	99	0.4
Forsyth	249	284	339	1.4
Fulton	3,426	3,755	4,107	16.7
Gwinnett	5,241	4,502	4,298	17.5
Henry	335	525	645	2.6
Newton	715	927	1,035	4.2
Rockdale	825	905	991	4.0
Walton	366	541	629	2.6
Others in State	484	559	661	2.7
Out of State	3,301	3,444	3,770	15.4
<b>Total</b>	<b>21,473</b>	<b>22,808</b>	<b>24,549</b>	<b>100.0</b>

**Top 10 County Enrollment, Fall 2009**



Source: Office of Institutional Research and Planning

# High Schools Attended by 100 or More Students in Fall 2007- 2009

(This table is continued on the next page)

High School		Total Fall Enrollment			Enrollment of New HS Grads		
		2007	2008	2009	2007	2008	2009
<b>DeKalb</b>	Clarkston	128	138	148	21	18	30
	Cedar Grove	153	171	194	17	30	35
	Chamblee	130	150	170	19	20	39
	Columbia	132	145	142	17	31	12
	Cross Keys	125	120	129	17	20	17
	Druid Hills	152	158	189	33	24	33
	Dunwoody	233	229	256	36	20	39
	Lakeside	175	190	188	24	30	35
	Lithonia	188	190	192	28	28	20
	Martin Luther King, Jr.	122	155	177	10	18	10
	Open Campus	226	214	221	28	29	26
	Redan	183	208	228	25	30	28
	Southwest DeKalb	176	206	224	29	38	36
	Stephenson	188	226	226	24	18	33
	Stone Mountain	145	142	181	12	16	15
	Towers	110	102	126	44	46	42
Tucker	189	212	223	44	46	42	
<b>Fulton</b>	Chattahoochee/Crestwood	223	238	244	31	49	36
	Milton	224	243	243	18	23	24
	North Springs	141	159	178	22	25	20
	Northview	290	323	350	26	22	35
	Roswell	255	214	214	42	24	27
<b>Gwinnett</b>	Berkmar	286	273	293	49	53	68
	Brookwood	318	266	253	37	48	54
	Centennial	172	181	203	18	25	26
	Central Gwinnett	315	224	185	30	26	42
	Collins Hill	394	226	162	27	23	16
	Duluth	263	246	238	13	9	10
	Grayson	231	225	211	38	48	33
	Meadowcreek	243	231	279	29	55	38
	Norcross	252	260	295	41	27	58
	North Gwinnett	149	105	117	44	50	52
	Parkview	335	323	327	15	22	24
	Phoenix (Open Campus)	226	195	200	59	70	51
	Shiloh	231	237	214	7	10	8
	South Gwinnett	216	222	248	28	37	36

## High Schools Attended by 100 or More Students in Fall 2007- 2009

		2007	2008	2009	2007	2008	2009
<b>Newton</b>	Eastside High	143	210	228	46	63	49
	Newton County Comp.	235	272	295	49	58	38
<b>Rockdale</b>	Heritage	213	231	245	41	52	63
	Rockdale	197	181	202	22	28	36
	Salem High School	192	217	238	33	68	61
<b>Walton</b>	Faith Academy	185	226	259	19	42	28
	Loganville	159	245	253	34	92	60

**Note: Table includes high schools that enrolled 100 or more students to GPC in Fall 2007- 2009.  
 "New High School Grad" refers to a student new to GPC and newly graduated from High School.**

## International Student Enrollment, Fall 2007-2009

Country	07	08	09	Country	07	08	09	Country	07	08	09
Afghanistan	2	21	16	Chad	1	1	NA	Hungary	4	7	7
Albania	9	10	4	Chile	4	8	8	Iceland	NA	NA	1
Algeria	1	NA	1	China	69	83	107	India	191	207	218
Anguilla	1	1	1	Colombia	129	131	130	Indonesia	46	39	38
Antigua and Barbuda	2	3	1	Congo (Brazzaville)	17	20	24	Iran	75	77	84
Argentina	11	9	7	Congo (Kinshasa) [Zaire]	1	3	7	Iraq	11	11	10
Armenia	2	2	NA	Costa Rica	6	7	8	Ireland	1	1	NA
Aruba	3	1	1	Cote D'Ivoire	38	34	30	Israel	8	12	8
Australia	2	4	3	Croatia	10	6	8	Italy	5	7	8
Austria	3	4	3	Cuba	10	7	7	Jamaica	148	155	184
Azerbaijan	1	NA	4	Czech Republic	12	8	11	Japan	22	21	18
Bahamas (The)	8	13	12	Denmark	2	2	1	Jordan	6	4	4
Bahrain	NA	NA	2	Dominica	10	10	12	Kazakhstan	3	2	1
Bangladesh	37	44	51	Dominican Republic	14	14	12	Kenya	35	37	37
Barbados	3	6	7	Ecuador	10	9	10	Kiribati	1	NA	NA
Belarus	10	11	11	Egypt	6	7	6	Korea, Republic of (South)	364	381	378
Belgium	2	2	1	El Salvador	19	12	16	Kuwait	6	2	2
Belize	2	1	2	Eritrea	7	10	15	Kyrgyzstan	2	2	2
Benin	2	2	7	Estonia	2	1	NA	Laos	3	2	4
Bermuda	5	3	4	Ethiopia	234	225	228	Latvia	4	4	4
Bhutan	1	1	3	Finland	1	NA	1	Lebanon	2	1	2
Bolivia	4	4	5	France	12	17	20	Liberia	46	46	44
Bosnia and Herzegovina	81	56	40	Gabon	3	4	3	Libya	1	1	1
Botswana	1	1	2	Gambia (The)	8	8	8	Liechtenstein	1	NA	NA
Brazil	75	90	95	Georgia	1	2	2	Lithuania	5	3	4
British Virgin Islands	NA	1	1	Germany	23	22	31	Macedonia	1	1	NA
Bulgaria	15	21	15	Ghana	78	73	76	Madagascar	1	NA	NA
Burkina	1	2	5	Greece	NA	1	NA	Malaysia	9	11	9
Burma (Myanmar)	1	1	4	Grenada	5	5	3	Mali	6	5	5
Burundi	4	4	3	Guatemala	13	12	7	Mauritania	1	1	3
Cambodia	5	6	7	Guinea	25	28	25	Mauritius	1	NA	NA
Cameroon	51	66	73	Guyana	22	28	24	Mexico	137	157	152
Canada	55	62	60	Haiti	52	49	48	Moldova	18	24	22
Cape Verde	NA	NA	1	Honduras	4	8	12	Morocco	6	8	9
Central African Republic	1	1	NA	Hong Kong	11	8	8	Nepal	10	9	9

## International Student Enrollment (continued), Fall 2007-2009

Country	07	08	09	Country	07	08	09	Country	07	08	09
Netherlands	3	2	NA	Slovenia	NA	1	1	Vietnam	224	228	249
Netherlands Antilles	NA	1	1	Somalia	48	49	45	Yemen	2	1	NA
New Zealand	1	2	1	South Africa	18	18	21	Zambia	8	6	6
Nicaragua	5	4	10	Spain	5	4	5	Zimbabwe	12	6	9
Niger	3	4	3	Sri Lanka	2	4	3				
Nigeria	166	197	213	Sudan	44	30	19				
Norway	1	NA	NA	Suriname	1	1	2				
Pakistan	70	71	69	Sweden	3	7	12				
Panama	5	14	15	Switzerland	NA	1	1				
Paraguay	NA	1	3	Syria	8	7	5				
Peru	42	47	64	Taiwan	32	27	32	<b>Total Students</b>	<b>3,592</b>	<b>3,727</b>	<b>3,866</b>
Philippines	18	22	27	Tajikistan	NA	1	NA	<b>Total Countries</b>	<b>151</b>	<b>147</b>	<b>144</b>
Poland	29	18	12	Tanzania	8	12	10	<b>or Regions</b>			
Portugal	1	NA	1	Thailand	16	14	19				
Romania	45	35	29	Togo	13	11	19				
Russia	38	41	45	Trinidad and Tobago	48	45	49				
Rwanda	6	10	14	Tunisia	1	4	3				
Saint Kitts and Nevis	2	NA	NA	Turkey	9	19	16				
Saint Lucia	7	7	6	Turkmenistan	1	1	1				
Saint Vincent/Grenadines	3	3	3	Uganda	4	7	4				
Saudi Arabia	6	5	6	Ukraine	37	41	35				
Senegal	11	16	21	United Arab Emirates	3	NA	NA				
				United Kingdom/Gr							
Serbia	4	7	5	Britain	49	50	47				
Sierra Leone	15	15	16	Uruguay	5	2	3				
Singapore	2	2	1	Uzbekistan	4	7	10				
Slovakia	5	6	2	Venezuela	40	44	51				

### FALL 2009

#### Countries with 100 or Greater Student Enrollment

1. **Korea, Republic of (South):** 378
2. **Vietnam:** 249
3. **Ethiopia:** 228
4. **India:** 218
5. **Nigeria:** 213
6. **Jamaica:** 184
7. **Mexico:** 152
8. **Colombia:** 130

## Retention, Graduation, & Transfer Rates, Fall 2004 Cohort

First-Year Retention Rate, Fall 2005						
Institution	First-Time, Full-Time Freshmen			All First-Time Freshmen		
	Total Freshmen	Institution-Specific Rate	System-Wide Rate	Total Freshmen	Institution-Specific Rate	System-Wide Rate
GPC	2,649	65.57%	69.42%	3,791	59.9%	63.0%
Two-Year College Total	8,460	61.0%	67.3%	11,414	56.8%	62.2%
System Total	35,765	73.6%	79.4%	40,755	70.4%	75.8%

Second Year-Year Retention Rate, Fall 2006						
Institution	First-Time, Full-Time Freshmen			All First-Time Freshmen		
	Total Freshmen	No. Retained	Institution-Specific Rate	Total Freshmen	No. Retained	Institution-Specific Rate
GPC	2,649	968	39.52%	3,791	1,330	35.0%

Third-Year Associate Degree Graduation Rate, Fall 2007						
Institution	First-Time, Full-Time Freshmen			All First-Time Freshmen		
	Total Freshmen	No. Graduated	Institution-Specific Rate	Total Freshmen	No. Graduated	Institution-Specific Rate
GPC	2,649	252	9.51%	3,791	413	10.9%

Transfer Rate to a Four-Year USG Institution by Fall 2007			
Institution	First-Time, Full-Time Freshmen		
	Total Freshmen	No. Transferred	Institution-Specific Rate
GPC	2,649	589	22.24%

**\*Note: This information complies with the Student Right to Know Act.**

Source: Office of Strategic Research and Analysis website, [http://www.usg.edu/sra/students/cir/ch\\_reports/](http://www.usg.edu/sra/students/cir/ch_reports/), University System of Georgia. And USG by the Numbers Data Mart, <http://info.usg.edu>

## Retention, Graduation, & Transfer Rates, Fall 2005 Cohort

First-Year Retention Rate, Fall 2006						
Institution	First-Time, Full-Time Freshmen			All First-Time Freshmen		
	Total Freshmen	Institution-Specific Rate	System-Wide Rate	Total Freshmen	Institution-Specific Rate	System-Wide Rate
GPC	2,612	65.9%	70.6%	3,866	60.8%	64.4%
Two-Year College Total	6,380	57.3%	64.4%	9,141	54.2%	59.2%
System Total	37,883	72.7%	78.4%	43,167	69.3%	74.6%

Second Year-Year Retention Rate, Fall 2007						
Institution	First-Time, Full-Time Freshmen			All First-Time Freshmen		
	Total Freshmen	No. Retained	Institution-Specific Rate	Total Freshmen	No. Retained	Institution-Specific Rate
GPC	2,612	1,027	41.8%	3,844	1,429	36.9%

Third-Year Associate Degree Graduation Rate, Fall 2008						
Institution	First-Time, Full-Time Freshmen			All First-Time Freshmen		
	Total Freshmen	No. Graduated	Institution-Specific Rate	Total Freshmen	No. Graduated	Institution-Specific Rate
GPC	2,612	241	9.2%	3,844	352	9.1%

Transfer Rate to a Four-Year USG Institution by Fall 2008			
Institution	First-Time, Full-Time Freshmen		
	Total Freshmen	No. Transferred	Institution-Specific Rate
GPC	2,612	525	20.10%

\*Note: This information complies with the Student Right to Know Act.

## Retention, Graduation, & Transfer Rates, Fall 2006 Cohort

First-Year Retention Rate, Fall 2007						
First-Time, Full-Time Freshmen				All First-Time Freshmen		
Institution	Total Freshmen	Institution-Specific Rate	System-Wide Rate	Total Freshmen	Institution-Specific Rate	System-Wide Rate
GPC	2,574	64.18%	68.88%	3,934	60.84%	64.41%
Two-Year College Total	6,450	58.19%	65.10%	9,141	54.15%	59.18%
System Total	39,729	73.21%	79.18%	43,167	69.33%	74.62%

Second Year-Year Retention Rate, Fall 2008						
First-Time, Full-Time Freshmen				All First-Time Freshmen		
Institution	Total Freshmen	No. Retained	Institution-Specific Rate	Total Freshmen	No. Retained	Institution-Specific Rate
GPC	2,574	923	38.4%	3,934	1,291	32.8%

Third-Year Associate Degree Graduation Rate, Fall 2009						
First-Time, Full-Time Freshmen				All First-Time Freshmen		
Institution	Total Freshmen	No. Graduated	Institution-Specific Rate	Total Freshmen	No. Graduated	Institution-Specific Rate
GPC	2574	223	8.7%	3,934	363	9.2%

\*Note: This information complies with the Student Right to Know Act.

## Retention, Fall 2007 and 2008 Cohorts

Fall 2007 Cohort First-Year Retention Rate, Fall 2008				
First-Time, Full-Time Freshmen				All First-Time Freshmen
Institution	Total Freshmen	Institution-Specific Rate	System-Wide Rate	Total Freshmen
GPC	2,559	64.05%	68.39%	3,934
Two-Year College Total	6,583	58.07%	64.76%	-
System Total	41,124	72.98%	78.85%	-

Fall 2007 Cohort Second Year-Year Retention Rate, Fall 2009						
First-Time, Full-Time Freshmen				All First-Time Freshmen		
Institution	Total Freshmen	No. Retained	Institution-Specific Rate	Total Freshmen	No. Retained	Institution-Specific Rate
GPC	2,559	1,634	63.9%	3,934	1,395	35.5%

Fall 2008 Cohort First-Year Retention Rate, Fall 2009				
First-Time, Full-Time Freshmen				All First-Time Freshmen
Institution	Total Freshmen	Institution-Specific Rate	System-Wide Rate	Total Freshmen
GPC	3,025	62.68%	66.88%	4,932
Two-Year College Total	7,543	58.01%	64.31%	-
System Total	44,645	72.72%	78.91%	-

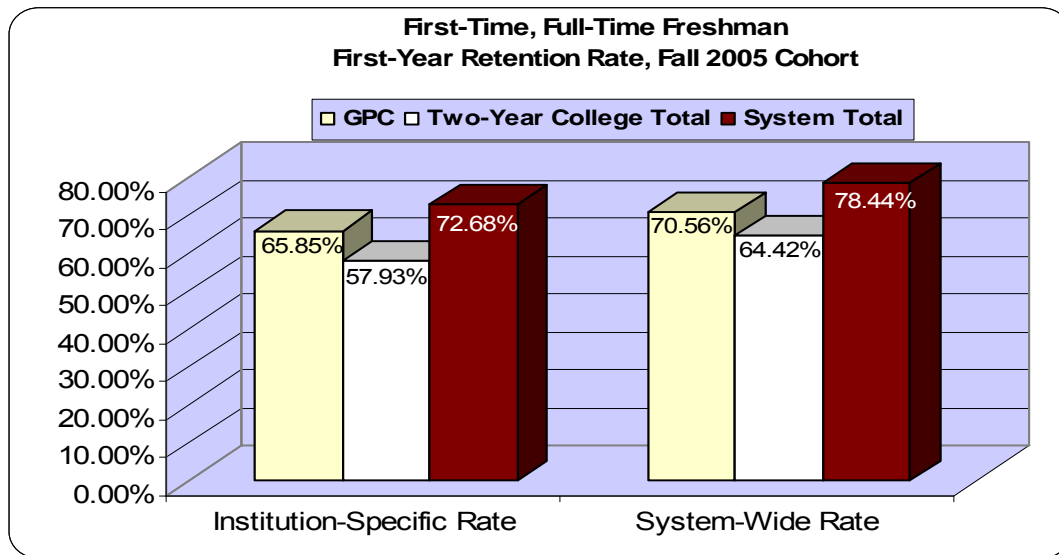
Source: Board of Regents, Graduation and Retention Report ([http://www.usg.edu/sra/students/grad\\_ret/retention.shtml](http://www.usg.edu/sra/students/grad_ret/retention.shtml))  
 Board of Regents, USG by the Numbers, Retention Rates by Institution Report (<http://info.usg.edu/>)

**\*Note: This information complies with the Student Right to Know Act.**

# Enrollment by Class Size, FY 2003-09

Enrollment Percentage by Class Size, FY 2003-2009							
Class Size	FY 03	FY04	FY05	FY06	FY07	FY08	FY09
1-10 students	11.5%	9.2%	12.1%	12.0%	25.0%	10.6%	8.2%
11-20 students	29.8%	31.0%	34.3%	35.7%	41.1%	29.1%	22.7%
21-30 students	41.8%	42.8%	39.5%	39.7%	44.2%	44.2%	50.2%
31-40 students	14.7%	14.8%	12.4%	11.2%	13.2%	14.2%	16.3%
41-50 students	1.4%	1.4%	1.0%	0.9%	0.8%	1.2%	1.4%
Over 50 students	1.0%	0.8%	0.7%	0.5%	0.7%	0.6%	1.5%

Source: Office of Institutional Research and Planning



**AT A GLANCE**

- Among the 11 two-year institutions in the system, GPC ranks second in institution specific retention (64.3%).

\*Note: This information complies with the Student Right to Know Act.

## Student Financial Aid Awarded by Source, FY 2006-2010

Awards	FY 2006		FY 2007		FY 2008		FY 2009		FY 2010	
	Student #	\$ Amount	Student #	\$ Amount	Student #	\$ Amount	Student #	\$ Amount	Student #	\$ Amount
<b>GRANTS</b>										
Pell	7,108	14,529,272	6,615	13,279,355	8,526	19,222,610	10,560	27,408,585	13,855	45,634,881
SEOG	1,332	522,816	1,173	488,700	927	432,824	1,007	498,194	1,438	620,726
LEAP	151	68,383	133	68,383	114	68,224	113	67,116	271	81,050
HOPE	6,275	8,887,240	5,257	7,391,729	5,041	7,268,038	5,145	7,502,502	5,070	7,929,734
<b>LOANS</b>										
Institutional	93	33,446	94	42,361	73	30,246	130	56,371	11	6,869
Private	61	240,584	65	254,779	67	279,041	30	161,485	49	209,823
PLUS	47	194,314	66	153,791	59	206,660	30	110,344	36	189,762
Subsidized	2,632	5,420,735	3,023	5,201,822	3,661	9,777,360	4,953	14,406,191	6,300	18,361,377
Unsubsidized	2,357	6,903,936	2,632	5,843,021	2,800	7,763,014	3,957	13,453,233	5,342	18,690,200
<b>SCHOLARSHIPS</b>										
Institutional	448	586,973	502	596,903	466	625,581	480	675,973	430	811,102
Other	363	219,296	396	310,917	279	192,751	1,048	530,728	856	619,488
<b>STUDENT EMPLOYMENT</b>										
College Work Study	203	357,771	178	246,206	153	260,790	174	351,396	198	504,818
<b>TOTAL AWARDED</b>	<b>21,070</b>	<b>\$37,964,766</b>	<b>19,738</b>	<b>\$33,567,050</b>	<b>22,166</b>	<b>\$46,127,139</b>	<b>27,627</b>	<b>\$65,222,118</b>	<b>33,856</b>	<b>\$93,659,830</b>

Source: Financial Aid Office and Office of Institutional Research and Planning

## Applications Received, Fall 2006-09; Testing Activities, FY 2007-10

Applications Received, Fall 2006-2009								
Applications Received	2006		2007		2008		2009	
	#	%	#	%	#	%	#	%
Total App. Received	21,088	100	19,737	100	24,316	100	29,113	100
Completed Files	12,095	57	11,859	60	13,857	57	16,497	57
Completed – Registered	6,589	31	6,798	34	8,064	33	8,743	30
Completed – Unregistered	5,506	26	5,061	26	5,793	24	8,054	27
Incomplete Files	8,993	43	7,878	40	10,459	43	12,616	43

Testing Activities, FY 2007-2010				
Tests Administered	2007	2008	2009	2010
ACT	438	369	432	127
Alternate Regents'	528	0	0	0
BSE/CPE-Exit	12	4	5	4
BSE/CPE-Placement	0	0	1	1
CLEP	253	503	421	352
COMPASS	17,844	14,609	17,233	19,465
Dental Hygiene Board	38	46	0	0
English as a Second Language Placement (ENSL)	1,395	1,602	1,256	1,194
Independent Study	478	486	211	460
Institutional SAT	0	0	0	0
Regents' Test	5,573	6,552	11,561	12,133
SAT I and II Assessment Tests	1,656	1,581	837	670
Test of English as a Foreign Language (TOEFL)	0	434	838	511
Distance Learning/Web CT	4,257	3,070	1,890	1,660
DSST	58	105	74	55
<b>Total</b>	<b>32,530</b>	<b>29,361</b>	<b>34,759</b>	<b>36,632</b>

\* Note: The changes below have been made to the reporting format of Regents' Testing Data.

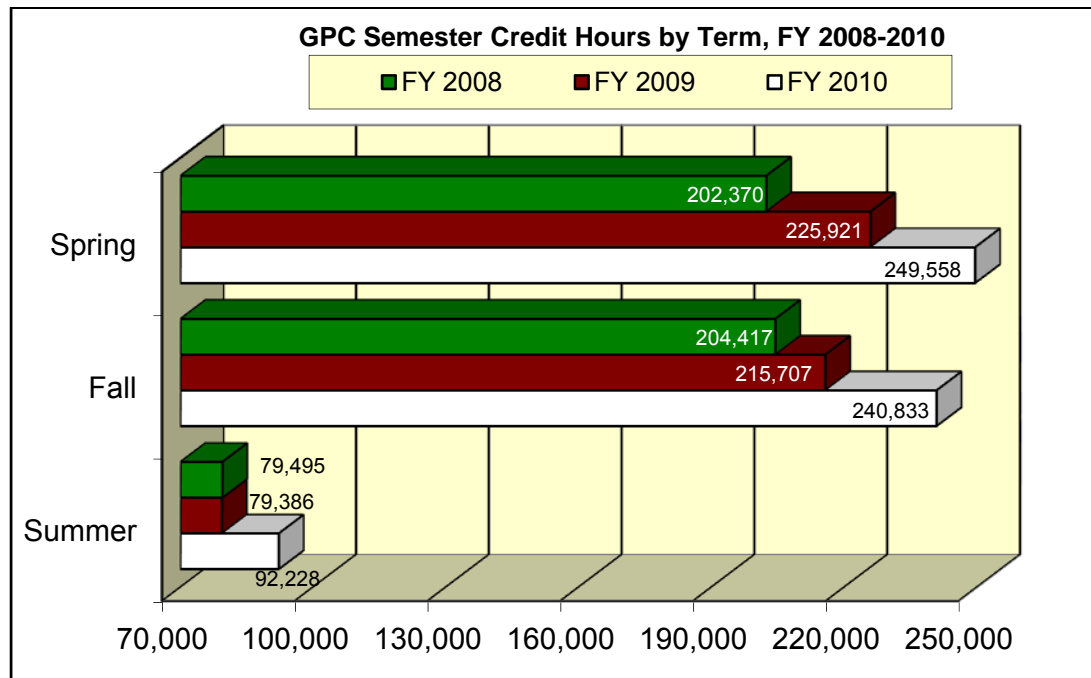
Fewer students sat for the Regents' Test in 2005. The Board of Regents' identified additional ways that students could satisfy the Regents' Reading requirement with a national test scores and the Regents' writing requirements with a combination of National SAT or ACT scores as grades of "A" or "B" in English 1101.

Also, please be aware that the college no longer maintains an institutional testing program, resulting in fewer test administrations of the Institutional TOEFL (I-TOEFL) and the Institutional SAT (I-SAT). Specifically, the I-TOEFL was discontinued as of Fall 2005 and the I-SAT was discontinued in October 2005, as such, fewer total students are recorded.

\*\*Note: Georgia Perimeter College re-instituted the Alternate Regents version in Spring 2006 for non-native Speaking Students. The Alternate Regents test consists of Essay Test only. If an ESL student passes the Essay with a score of 2 or better, that ESL student has also met the Regents' Requirement for Reading

# Semester Credit Hour Report, GPC & USG FY 2008-2010

	FY 2008			FY 2009			FY 2010		
	Summer	Fall	Spring	Summer	Fall	Spring	Summer	Fall	Spring
Georgia Perimeter College	79,495	204,417	202,370	79,386	215,707	225,921	92,228	240,833	249,558
USG Two-year Colleges	152,314	419,572	408,552	147,758	428,067	434,949	176,231	489,176	493,506
USG Grand Totals	930,820	3,183,365	3,024,878	961,617	3,343,572	3,231,917	1,035,554	3,606,393	3,483,070



## Comparison with Other USG Two-Year Colleges, Fall 2007

Institution	Headcount Enrollment	FTE	Non-White	Female	GA Residents	Freshmen	New Freshmen
			%	%	%	%	%
Abraham Baldwin Agricultural College	3,665	3,214	24.4	53.8	96.8	62.2	36.2
Atlanta Metropolitan College	1,882	1,510	99.5	65.5	91.3	66.8	17.0
Bainbridge College	2,661	2,042	58.6	71.0	99.7	57.4	18.1
Coastal Georgia Community College	2,942	2,109	33.5	65.7	94.8	60.1	20.0
Darton College	4,760	3,438	46.1	70.6	96.2	59.7	21.9
East Georgia College	1,987	1,779	36.1	58.6	98.8	81.8	37.5
Georgia Highlands College (formerly Floyd College)	4,346	3,557	18.1	62.2	97.1	66.0	27.5
Gainesville College	7,474	6,364	16.1	54.0	97.6	63.2	27.5
<b>Georgia Perimeter College</b>	<b>21,473</b>	<b>15,954</b>	<b>62.3</b>	<b>61.6</b>	<b>93.0</b>	<b>59.0</b>	<b>15.9</b>
Gordon College	3,703	3,212	40.6	64.7	98.7	67.1	31.3
Middle Georgia College	3,444	2,951	43.6	54.9	97.7	62.1	30.4
South Georgia College	1,756	1,557	38.2	63.2	97.3	71.0	35.3
Waycross College	989	691	27.5	71.1	98.7	51.2	20.2
<b>Two-Year Colleges Total</b>	<b>42,796</b>	<b>32,637</b>	<b>52.5</b>	<b>63.9</b>	<b>94.8</b>	<b>61.5</b>	<b>20.1</b>

## Comparison with Other USG Two-Year Colleges, Fall 2008

Institution	Headcount Enrollment	FTE	Non-White %	Female %	GA Residents %	Freshmen %	New Freshmen %
Abraham Baldwin Agricultural College	3,600	3,174	24.8	54.0	96.9	61.4	34.2
Atlanta Metropolitan College	2,241	1,812	99.1	66.1	92.2	67.6	18.6
Bainbridge College	3,091	2,361	58.4	70.0	98.9	55.7	18.4
Coastal Georgia Community College	2,932	2,115	32.1	64.9	94.4	60.0	22.2
Darton College	5,019	3,697	46.2	70.4	95.4	59.2	22.6
East Georgia College	2,555	2,341	40.0	58.0	98.4	81.5	38.2
Georgia Highlands College (formerly Floyd College)	4,690	3,869	19.0	62.4	97.7	64.8	25.5
Gainesville College	8,238	7,075	19.5	54.0	98.0	62.8	28.0
<b>Georgia Perimeter College</b>	<b>22,808</b>	<b>16,908</b>	<b>65.6</b>	<b>61.6</b>	<b>92.2</b>	<b>60.2</b>	<b>18.2</b>
Gordon College	3,855	3,399	42.0	65.5	98.7	63.7	31.5
Middle Georgia College	3,434	2,959	45.6	54.2	97.6	62.8	32.2
South Georgia College	1,864	1,666	38.1	63.8	97.6	69.4	35.6
Waycross College	936	701	26.6	70.4	98.9	51.9	22.0
<b>Two-Year Colleges Total</b>	<b>43,204</b>	<b>33,355</b>	<b>56.0</b>	<b>63.6</b>	<b>94.41</b>	<b>62.13</b>	<b>21.6</b>

## Comparison with Other USG Two-Year Colleges, Fall 2009

Institution	Headcount Enrollment	FTE	Non-White %	Female %	GA Residents %	Freshmen %	New Freshmen %
Abraham Baldwin Agricultural College	3,327	2,973	28.4	54.3	96.8	60.0	31.6
Atlanta Metropolitan College	2,688	2,271	99.0	65.5	91.8	69.9	18.8
Bainbridge College	3,558	2,879	63.5	70.3	98.9	58.9	16.2
Coastal Georgia Community College	3,080	2,412	29.3	68.9	95.2	59.8	24.3
Darton College	5,854	4,436	48.1	69.2	95.4	58.4	22.0
East Georgia College	2,754	2,519	43.1	59.1	98.7	79.6	36.0
Georgia Highlands College (formerly Floyd College)	5,219	4,417	20.0	63.0	98.1	65.1	23.5
Gainesville College	8,801	7,668	20.2	54.2	98.1	61.3	25.9
<b>Georgia Perimeter College</b>	<b>24,549</b>	<b>18,795</b>	<b>70.2</b>	<b>61.3</b>	<b>92.0</b>	<b>60.5</b>	<b>17.6</b>
Gordon College	4,545	4,088	50.6	66.6	99.0	67.9	34.0
Middle Georgia College	3,614	3,151	45.4	54.1	97.3	61.8	31.7
South Georgia College	2,000	1,814	40.0	62.7	97.8	72.6	35.8
Waycross College	1,077	822	26.1	66.6	99.6	51.5	30.4
<b>Two-Year Colleges Total</b>	<b>47,699</b>	<b>37,953</b>	<b>59.3</b>	<b>63.4</b>	<b>94.4</b>	<b>62.6</b>	<b>20.9</b>

# Athletics, 2010-2011

---

**Director of Athletics:** Alfred Barney

**Colors:** Maroon, Gold

**Affiliation:** National Junior College Athletic Association, Region 17

**Mascot:** Jaguars

**Conference:** Region 17, a.k.a. Georgia College Athletic Association (formerly Georgia Junior College Athletic Association)

## RECENT ACCOMPLISHMENTS

### Baseball

**Head Coach:** Danny Blue

**Assistant Coaches:** Stewart Bailey, Thomas Briscoe, Don Adams

- 2010 record: 36-19, 12-9 Region 17.
- Played in 2010 Region 17 Tournament semifinals.
- Robby Hefflinger, Nathan Fawbush and LeAndre Davis drafted by Major League teams.

### Softball

**Head Coach:** Ed Schutte

**Assistant Coach:** Ken Deyton

- 2010 record: 31-15, 13-5 Region 17.
- Won AAU International Invitational in Orlando; won Region 17 Tournament championship, earning second trip to NJCAA National Tournament.
- Christina Ezell led nation in strikeouts per inning; selected region Pitcher of the Year and Player of the Year.

### Basketball (Men's)

**Head Coach:** Alfred Barney

**Assistant Coaches:** David Dennis, Chris Ward

- 2009-10 record: 14-18, 7-7 Region 17.
- Played in Region 17 semifinals.
- Won three of last five Region 17 championships, earning trips to National Tournament. **Basketball (Women's)**

**Head Coach:** James Waldon

**Assistant Coaches:** Christina Shafer, Donald Moore Jr., Janine Martin

- 2009-10 record: 15-15, 7-5 Region 17.
- Won four of last six Region 17 championships, earning trips to National Tournament.

### Soccer (Men's)

**Head Coach:** Marc Zagara

**Assistant Coaches:** Ron Moore, Alan Davie, Avishai Shwartz

- 2009 record: 22-2, 10-0 Region 17, national runner-up.
- Won 6th consecutive Region 17 and SE District championships.
- Kingsley Morgan and Richard Cayonne selected All America.
- Won national championship in 2005, runner-up in 2004, 2007 and 2009.

### Soccer (Women's)

**Head Coach:** Bruno Kalonji

**Assistant Coaches:** Shawn Wash, Franklin Lawson

- 2009 record: 11-7, 6-4 Region 17.
- Advanced to Region 17 Tournament semifinals
- Taiwo Adeshigbin fifth highest scorer in nation.

### Tennis (Men's)

**Head Coach:** Mohamed Nait Omar

- 2010 record: 2-6.
- Won four consecutive national championships (1998, 1999, 2000, 2001).

### Tennis (Women's)

**Head Coach:** Mohamed Nait Omar

- 2010 record: 5-4.
- Finished 2nd in Region 17 Tournament.
- Mary Slade won No. 1 flight to earn Region 17 Player of the Year.
- Won national championship in 2000.

# Retention & Graduation Rates for Athletes Receiving Scholarships Fall 2005 Cohort

Fall 2005 Cohort Retention & Graduation Rates									
First-Time, Full-Time Freshmen by Gender and Ethnicity									
Sport	Ethnicity	Gender	Total FT-FT Freshmen	No. Retained Fall 2006	Institution-Specific Rate	No. Retained Fall 2007	Institution-Specific Rate	No. Graduated by Fall 2008	Institution-Specific Rate
Baseball	Asian	Male	0	NA	NA	NA	NA	NA	NA
		Female	0	NA	NA	NA	NA	NA	NA
	Black	Male	0	NA	NA	NA	NA	NA	NA
		Female	0	NA	NA	NA	NA	NA	NA
	Hispanic	Male	0	NA	NA	NA	NA	NA	NA
		Female	0	NA	NA	NA	NA	NA	NA
	Multiracial	Male	0	NA	NA	0	NA	NA	NA
		Female	0	NA	NA	NA	NA	NA	NA
Native American	Male	0	NA	NA	NA	NA	NA	NA	
	Female	0	NA	NA	NA	NA	NA	NA	
White	Male	3	1	33.30%	0	0.00%	0	0.00%	
	Female	1	1	100.00%	0	0.00%	0	0.00%	
Basketball	Asian	Male	0	NA	NA	NA	NA	NA	NA
		Female	0	NA	NA	NA	NA	NA	NA
	Black	Male	9	6	66.70%	4	44.44%	1	11.11%
		Female	5	4	80.00%	2	40.00%	1	20.00%
	Hispanic	Male	0	NA	NA	NA	NA	NA	NA
		Female	0	NA	NA	NA	NA	NA	NA
	Multiracial	Male	0	NA	NA	0	NA	NA	NA
		Female	0	NA	NA	NA	NA	NA	NA
Native American	Male	0	NA	NA	NA	NA	NA	NA	
	Female	1	1	100.00%	1	100.00%	0	0.00%	
White	Male	0	NA	NA	NA	NA	NA	NA	
	Female	0	NA	NA	NA	NA	NA	NA	

**\*Note:** This information complies with the Student Right to Know Act.

Source: Office of Institutional Research and Planning

# Retention & Graduation Rates for Athletes Receiving Scholarships Fall 2005 Cohort (cont.)

Fall 2005 Cohort Retention & Graduation Rates									
First-Time, Full-Time Freshmen by Gender and Ethnicity									
Sport	Ethnicity	Gender	Total FT-FT Freshmen	No. Retained Fall 2006	Institution-Specific Rate	No. Retained Fall 2007	Institution-Specific Rate	No. Graduated by Fall 2008	Institution-Specific Rate
Soccer	Asian	Male	0	NA	NA	NA	NA	NA	NA
		Female	0	NA	NA	NA	NA	NA	NA
	Black	Male	1	1	100.00%	0	0.00%	0	0.00%
		Female	0	NA	NA	NA	NA	NA	NA
	Hispanic	Male	3	2	66.67%	1	33.33%	0	0.00%
		Female	1	0	0.00%	0	0.00%	0	0.00%
	Multiracial	Male	1	1	100.00%	1	100.00%	0	NA
		Female	0	NA	NA	0	0.00%	NA	NA
Native American	Male	0	NA	NA	NA	NA	NA	NA	
	Female	0	NA	NA	NA	NA	NA	NA	
White	Male	1	0	0.00%	NA	NA	0	NA	
	Female	0	NA	NA	0	0.00%	NA	NA	
Softball	Asian	Male	0	NA	NA	NA	NA	NA	NA
		Female	0	NA	NA	NA	NA	NA	NA
	Black	Male	0	NA	NA	NA	NA	NA	NA
		Female	0	NA	NA	NA	NA	NA	NA
	Hispanic	Male	0	NA	NA	NA	NA	NA	NA
		Female	0	NA	NA	NA	NA	NA	NA
	Multiracial	Male	0	NA	NA	NA	NA	NA	NA
		Female	1	1	100.00%	0	0.00%	0	0.00%
Native American	Male	0	NA	NA	NA	NA	NA	NA	
	Female	0	NA	NA	NA	NA	NA	NA	
White	Male	0	NA	NA	NA	NA	NA	NA	
	Female	7	6	85.71%	1	14.29%	1	14.29%	

**\*Note: This information complies with the Student Right to Know Act.**

Source: Office of Institutional Research and Planning

# Retention & Graduation Rates for Athletes Receiving Scholarships Fall 2005 Cohort (cont.)

Fall 2005 Cohort Retention & Graduation Rates										
First-Time, Full-Time Freshmen by Gender and Ethnicity										
Sport	Ethnicity	Gender	Total FT-FT Freshmen	No. Retained Fall 2006	Institution-Specific Rate	No. Retained Fall 2007	Institution-Specific Rate	No. Graduated by Summer 2008	Institution-Specific Rate	
Tennis	Asian	Male	0	NA	NA	NA	NA	NA	NA	
		Female	0	NA	NA	NA	NA	NA	NA	
	Black	Male	1	0	0.00%	NA	NA	0	0.00%	
		Female	0	NA	NA	NA	NA	NA	NA	
	Hispanic	Male	0	NA	NA	NA	NA	NA	NA	
		Female	0	NA	NA	NA	NA	NA	NA	
	Multiracial	Male	0	NA	NA	NA	NA	NA	NA	
		Female	0	NA	NA	NA	NA	NA	NA	
	Native American	Male	0	NA	NA	NA	NA	NA	NA	
		Female	0	NA	NA	NA	NA	NA	NA	
	White	Male	0	0	0.00%	0	0.00%	NA	NA	
		Female	1	1	100.00%	NA	NA	0	0.00%	
	<b>Totals</b>			<b>36</b>	<b>25</b>	<b>69.44%</b>	<b>10</b>	<b>27.78%</b>	<b>3</b>	<b>8.33%</b>

**\*Note: This information complies with the Student Right to Know Act.**

# Retention & Graduation Rates for Athletes Receiving Scholarships Fall 2006 Cohort

Fall 2006 Cohort Retention & Graduation Rates									
First-Time, Full-Time Freshmen by Gender and Ethnicity									
Sport	Ethnicity	Gender	Total FT-FT Freshmen	No. Retained Fall 2007	Institution-Specific Rate	No. Retained Fall 2008	Institution-Specific Rate	No. Graduated by Fall 2009	Institution-Specific Rate
Baseball	Asian	Male	0	NA	NA	NA	NA	NA	NA
		Female	0	NA	NA	NA	NA	NA	NA
	Black	Male	1	0	NA	0	0.00%	0	0.00%
		Female	0	NA	NA	NA	NA	NA	NA
	Hispanic	Male	0	NA	NA	NA	NA	NA	NA
		Female	0	NA	NA	NA	NA	NA	NA
	Multiracial	Male	0	NA	NA	NA	NA	NA	NA
		Female	0	NA	NA	NA	NA	NA	NA
Native American	Male	0	NA	NA	NA	NA	NA	NA	
	Female	0	NA	NA	NA	NA	NA	NA	
White	Male	6	4	66.67%	1	16.67%	0	0.00%	
	Female	0	NA	NA	NA	NA	NA	NA	
Basketball	Asian	Male	0	NA	NA	NA	NA	NA	NA
		Female	0	NA	NA	NA	NA	NA	NA
	Black	Male	5	3	60.00%	0	0.00%	0	0.00%
		Female	2	2	100.00%	0	0.00%	0	0.00%
	Hispanic	Male	0	NA	NA	NA	NA	NA	NA
		Female	0	NA	NA	NA	NA	NA	NA
	Multiracial	Male	0	NA	NA	NA	NA	NA	NA
		Female	1	1	100.00%	0	0.00%	1	100.00%
Native American	Male	0	NA	NA	NA	NA	NA	NA	
	Female	0	0	100.00%	NA	NA	NA	NA	
White	Male	0	NA	NA	NA	NA	NA	NA	
	Female	0	NA	NA	NA	NA	NA	NA	

**\*Note: This information complies with the Student Right to Know Act.**

# Retention & Graduation Rates for Athletes Receiving Scholarships Fall 2006 Cohort (cont.)

Fall 2006 Cohort Retention & Graduation Rates									
First-Time, Full-Time Freshmen by Gender and Ethnicity									
Sport	Ethnicity	Gender	Total FT-FT Freshmen	No. Retained Fall 2007	Institution-Specific Rate	No. Retained Fall 2008	Institution-Specific Rate	No. Graduated by Fall 2009	Institution-Specific Rate
Soccer	Asian	Male	0	NA	NA	NA	NA	NA	NA
		Female	0	NA	NA	NA	NA	NA	NA
	Black	Male	1	0	0.00%	0	0.00%	0	0.00%
		Female	4	4	100.00%	1	0.00%	NA	NA
	Hispanic	Male	3	1	33.33%	0	0.00%	NA	NA
		Female	2	1	50.00%	1	0.00%	NA	NA
	Multiracial	Male	0	NA	NA	NA	NA	NA	NA
		Female	1	1	100.00%	0	NA	NA	NA
Native American	Male	0	NA	NA	NA	NA	NA	NA	
	Female	0	NA	NA	NA	NA	NA	NA	
White	Male	0	NA	NA	NA	NA	NA	NA	
	Female	7	6	85.71%	2	0.00%	NA	NA	
Softball	Asian	Male	0	NA	NA	NA	NA	NA	NA
		Female	0	NA	NA	NA	NA	NA	NA
	Black	Male	0	NA	NA	NA	0.00%	0	0.00%
		Female	0	NA	NA	NA	0.00%	0	0.00%
	Hispanic	Male	0	NA	NA	NA	NA	NA	NA
		Female	0	NA	NA	NA	NA	NA	NA
	Multiracial	Male	0	NA	NA	NA	NA	NA	NA
		Female	0	NA	NA	NA	NA	NA	NA
Native American	Male	0	NA	NA	NA	NA	NA	NA	
	Female	0	NA	NA	NA	NA	NA	NA	
White	Male	0	NA	NA	NA	NA	NA	NA	
	Female	6	3	50.00%	1	16.67%	NA	NA	

**\*Note: This information complies with the Student Right to Know Act.**

# Retention & Graduation Rates for Athletes Receiving Scholarships Fall 2006 Cohort (cont.)

Fall 2006 Cohort Retention & Graduation Rates										
First-Time, Full-Time Freshmen by Gender and Ethnicity										
Sport	Ethnicity	Gender	Total FT-FT Freshmen	No. Retained Fall 2007	Institution-Specific Rate	No. Retained Fall 2008	Institution-Specific Rate	No. Graduated by Fall 2009	Institution-Specific Rate	
Tennis	Asian	Male	0	NA	NA	NA	NA	NA	NA	
		Female	0	NA	NA	NA	NA	NA	NA	
	Black	Male	0	NA	NA	NA	NA	NA	NA	
		Female	1	1	100.00%	1	100.00%	1	100.00%	
	Hispanic	Male	0	NA	NA	NA	NA	NA	NA	
		Female	0	NA	NA	NA	NA	NA	NA	
	Multiracial	Male	0	NA	NA	NA	NA	NA	NA	
		Female	0	NA	NA	NA	NA	NA	NA	
	Native American	Male	0	NA	NA	NA	NA	NA	NA	
		Female	0	NA	NA	NA	NA	NA	NA	
	White	Male	0	0	0.00%	NA	NA	NA	NA	
		Female	1	1	100.00%	1	100.00%	0	0.00%	
	<b>Totals</b>			<b>41</b>	<b>28</b>	<b>68.29%</b>	<b>8</b>	<b>19.51%</b>	<b>2</b>	<b>4.88%</b>

**\*Note: This information complies with the Student Right to Know Act.**

# Retention & Graduation Rates for Athletes Receiving Scholarships Fall 2007 Cohort

Fall 2007 Cohort Retention & Graduation Rates							
First-Time, Full-Time Freshmen by Gender and Ethnicity							
Sport	Ethnicity	Gender	Total FT-FT Freshmen	No. Retained Fall 2008	Institution-Specific Rate	No. Retained Fall 2009	Institution-Specific Rate
Baseball	Asian	Male	1	1	100.00%	1	100.00%
		Female	0	NA	NA	NA	NA
	Black	Male	0	NA	NA	0	0.00%
		Female	0	NA	NA	NA	NA
	Hispanic	Male	0	NA	NA	NA	NA
		Female	0	NA	NA	NA	NA
	Multiracial	Male	0	NA	NA	0	0.00%
		Female	0	NA	NA	NA	NA
	Native American	Male	0	NA	NA	NA	NA
		Female	0	NA	NA	NA	NA
Unknown	Male	7	6	85.71%	2	28.57%	
	Female	0	NA	NA	NA	NA	
White	Male	5	4	80.00%	1	20.00%	
	Female	0	NA	NA	NA	NA	
Basketball	Asian	Male	0	NA	NA	NA	NA
		Female	0	NA	NA	NA	NA
	Black	Male	4	2	50.00%	1	25.00%
		Female	3	2	66.67%	0	0.00%
	Hispanic	Male	0	NA	NA	NA	NA
		Female	0	NA	NA	NA	NA
	Multiracial	Male	0	NA	NA	NA	NA
		Female	0	NA	NA	NA	NA
	Native American	Male	0	NA	NA	NA	NA
		Female	0	NA	NA	NA	NA
White	Male	1	0	0.00%	0	0.00%	
	Female	0	NA	NA	NA	NA	

**\*Note: This information complies with the Student Right to Know Act.**

# Retention & Graduation Rates for Athletes Receiving Scholarships Fall 2007 Cohort (cont.)

Fall 2007 Cohort Retention & Graduation Rates							
First-Time, Full-Time Freshmen by Gender and Ethnicity							
Sport	Ethnicity	Gender	Total FT-FT Freshmen	No. Retained Fall 2008	Institution-Specific Rate	No. Retained Fall 2009	Institution-Specific Rate
Soccer	Asian	Male	0	NA	NA	NA	NA
		Female	0	NA	NA	NA	NA
	Black	Male	3	1	33.33%	0	0.00%
		Female	0	NA	NA	NA	NA
	Hispanic	Male	1	0	0.00%	0	0.00%
		Female	1	1	100.00%	1	100.00%
	Multiracial	Male	0	NA	NA	NA	NA
		Female	0	NA	NA	NA	NA
	Native American	Male	0	NA	NA	NA	NA
		Female	0	NA	NA	NA	NA
	White	Male	1	1	100.00%	0	0.00%
		Female	0	NA	NA	NA	NA
		Female	0	NA	NA	NA	NA
	Black	Male	0	NA	NA	NA	NA
		Female	0	NA	NA	NA	NA
	Hispanic	Male	0	NA	NA	NA	NA
		Female	0	NA	NA	NA	NA
	Multiracial	Male	0	NA	NA	NA	NA
Female		0	NA	NA	NA	NA	
Native American	Male	0	NA	NA	NA	NA	
	Female	0	NA	NA	NA	NA	
White	Male	0	NA	NA	NA	NA	
	Female	8	5	62.50%	0	0.00%	

**\*Note: This information complies with the Student Right to Know Act.**

*Source: Office of Institutional Research and Planning*

## Retention & Graduation Rates for Athletes Receiving Scholarships Fall 2007 Cohort (cont.)

Fall 2007 Cohort Retention & Graduation Rates							
First-Time, Full-Time Freshmen by Gender and Ethnicity							
Sport	Ethnicity	Gender	Total FT-FT Freshmen	No. Retained Fall 2008	Institution-Specific Rate	No. Retained Fall 2009	Institution-Specific Rate
Tennis	Asian	Male	0	NA	NA	NA	NA
		Female	2	2	100.00%	2	100.00%
	Black	Male	0	NA	NA	NA	NA
		Female	0	NA	NA	NA	NA
	Hispanic	Male	0	NA	NA	NA	NA
		Female	1	1	100.00%	0	0.00%
	Multiracial	Male	0	NA	NA	NA	NA
		Female	0	NA	NA	NA	NA
	Native American	Male	0	NA	NA	NA	NA
		Female	0	NA	NA	NA	NA
White	Male	1	1	100.00%	0	0.00%	
	Female	0	NA	NA	NA	NA	
<b>Totals</b>			<b>39</b>	<b>27</b>	<b>69.23%</b>	<b>8</b>	<b>20.51%</b>

**\*Note: This information complies with the Student Right to Know Act.**

# Retention & Graduation Rates for Athletes Receiving Scholarships Fall 2008 Cohort

Fall 2008 Cohort Retention & Graduation Rates					
First-Time, Full-Time Freshmen by Gender and Ethnicity					
Sport	Ethnicity	Gender	Total FT-FT Freshmen	No. Retained Fall 2009	Institution-Specific Rate
Baseball	Asian	Male	0	NA	NA
		Female	0	NA	NA
	Black	Male	0	NA	NA
		Female	0	NA	NA
	Hispanic	Male	1	1	100.00%
		Female	0	NA	NA
	Multiracial	Male	0	NA	NA
		Female	0	NA	NA
	Native American	Male	0	NA	NA
Female		0	NA	NA	
Unknown	Male	2	1	50.00%	
	Female	0	NA	NA	
White	Male	8	6	75.00%	
	Female	0	NA	NA	
Basketball	Asian	Male	0	NA	NA
		Female	0	NA	NA
	Black	Male	2	0	0.00%
		Female	7	2	28.57%
	Hispanic	Male	0	NA	NA
		Female	0	NA	NA
	Multiracial	Male	0	NA	NA
		Female	0	NA	NA
	Native American	Male	0	NA	NA
Female		0	NA	NA	
Unknown	Male	1	0	0.00%	
	Female	1	0	0.00%	
White	Male	0	NA	NA	
	Female	0	NA	NA	

**\*Note: This information complies with the Student Right to Know Act.**

## Retention & Graduation Rates for Athletes Receiving Scholarships Fall 2008 Cohort (cont.)

Fall 2008 Cohort Retention & Graduation Rates					
First-Time, Full-Time Freshmen by Gender and Ethnicity					
Sport	Ethnicity	Gender	Total FT-FT Freshmen	No. Retained Fall 2009	Institution-Specific Rate
Soccer	Asian	Male	1	0	0.00%
		Female	0	NA	NA
	Black	Male	0	NA	NA
		Female	0	NA	NA
	Hispanic	Male	8	2	25.00%
		Female	6	3	50.00%
	Multiracial	Male	0	NA	NA
		Female	0	NA	NA
Native American	Male	0	NA	NA	
	Female	0	NA	NA	
White	Male	2	0	0.00%	
	Female	2	0	0.00%	
Softball	Asian	Male	0	NA	NA
		Female	0	NA	NA
	Black	Male	0	NA	NA
		Female	0	NA	NA
	Hispanic	Male	0	NA	NA
		Female	0	NA	NA
	Multiracial	Male	0	NA	NA
		Female	0	NA	NA
Native American	Male	0	NA	NA	
	Female	0	NA	NA	
White	Male	0	NA	NA	
	Female	8	6	75.00%	

**\*Note: This information complies with the Student Right to Know Act.**

## Retention & Graduation Rates for Athletes Receiving Scholarships Fall 2008 Cohort (cont.)

Fall 2008 Cohort Retention & Graduation Rates					
First-Time, Full-Time Freshmen by Gender and Ethnicity					
Sport	Ethnicity	Gender	Total FT-FT Freshmen	No. Retained Fall 2009	Institution-Specific Rate
Tennis	Asian	Male	0	NA	NA
		Female	0	NA	NA
	Black	Male	0	NA	NA
		Female	0	NA	NA
	Hispanic	Male	0	NA	NA
		Female	0	NA	NA
	Multiracial	Male	0	NA	NA
		Female	0	NA	NA
	Native American	Male	0	NA	NA
		Female	0	NA	NA
White	Male	0	NA	NA	
	Female	0	NA	NA	
<b>Totals</b>			<b>49</b>	<b>21</b>	<b>42.86%</b>

**\*Note:** This information complies with the Student Right to Know Act.

## Students with Disabilities, from 2004 - 2009

	04-05	05-06	06-07	07-08	08-09
Visual	18	15	10	15	16
Deaf/Hard of Hearing	23	13	25	28	17
Brain Injury	19	22	10	13	17
Motor/Mobility	14	21	20	27	19
Psychological/Psychiatric	42	32	48	87	101
Learning Disability	80	81	86	93	98
Attention Deficit Hyperactivity Disorder (ADHD)	52	59	86	91	124
Both LD/ADHD	20	30			
Chronic Illness/Medical	33	38	24	39	50
Multiple Disabilities	12	17	9	12	15
Other	15	17	18	18	20
<b>TOTAL</b>	<b>328</b>	<b>345</b>	<b>336</b>	<b>423</b>	<b>477</b>

**Source:** Georgia Perimeter College Office of Disability Services, as reported to Board of Regents of the University System of Georgia.

**Note:** Reporting year begins in Summer and ends with Spring semester. Table shows number of students for whom accommodations or services were provided.

# Funding and Facilities

---

# Student Tuition and Fees, FY 2010

<b>Tuition (per hour)</b>	
In-State	\$80.00
Out-of-State	\$310.00
Distance Learning	\$99.00
<b>Required Fees (per semester)</b>	
Admission Application (one time only)	\$20.00
Athletic Fee	\$27.00
Student Support Service (Per Credit Hour-Max. \$120.00)	\$10.00
Student Activity	\$45.00
Technology	\$50.00
Institutional Fee	\$100.00
<b>Special Fees</b>	
Applied Music (per hour)	\$75.00
Dental Hygiene Lab/Insurance	\$65.00
Critical Languages	\$30.00
Late Registration Fee (per semester)	\$50.00
Nursing Lab/Insurance (per semester)	\$156.00
Science Lab (per course)	\$35.00
Transcript Fee	\$10.00
ID Card (New Students)	\$10.00
International Student Health Insurance (F1 Visa only)	\$1,050.00

## Tuition and Fees

Georgia Perimeter College students are responsible for tuition and fees which are set each year. Fees include student activity, student support service, technology, athletic, and other special fees. Tuition and fees are due each semester at the time of registration. Registration is

not complete until all fees are paid. Payment may be in cash, by check payable in U.S. currency, or with a Visa or MasterCard, American Express or Discover. The College will withhold copies of transcripts and other student records and/or revoke the enrollment of students who owe the College money. Fees and expenses are subject to change without notice.

Most fees are assessed for on-campus students only. Instruction delivered at Alpharetta, Clarkston, Decatur, Dunwoody, and Newton is considered on-campus. Instruction by distance education and courses at other locations are considered off-campus.

The precise amount of a student's fees for a semester depends upon a number of factors:

- The number of courses taken
- The nature of the courses
- The location at which the courses are taught
- The number of credit hours assigned to the courses
- The residence status of the student

It is the responsibility of the student to be informed of and observe all regulations and procedures regarding the payment of fees and the entitlement of refunds.

## Revenues and Expenditures Per Student, FY 2006-2010

<b>Revenues</b>	<b>FY06</b>	<b>FY07</b>	<b>FY08</b>	<b>FY09</b>	<b>Budget FY 10</b>
Tuition and Fees	\$36,793,184	\$36,786,567	\$38,207,341	\$47,312,338	\$50,059,886
State/Local Appropriations	64,422,543	59,392,062	62,686,315	\$59,001,685	\$59,308,292
Other Income	1,284,060	2,850,000	2,442,558	2,015,626	3,264,106
Departmental Sales & Services	2,786,000	2,700,000	1,527,416	909,950	200,000
Sponsored Operations	17,500,000	17,500,000	18,911,550	31,030,634	25,000,000
<b>Total Revenues</b>	<b>\$122,785,787</b>	<b>\$119,228,629</b>	<b>\$123,775,180</b>	<b>\$140,270,233</b>	<b>\$137,832,284</b>
<b>Expenditure Per Student</b>	<b>FY06</b>	<b>FY07</b>	<b>FY08</b>	<b>FY09</b>	<b>FY 10</b>
EFT Students	15,327	15,693	15,693	17,367	20,069
Expenditure per EFT Student (excluding sponsored)	\$6,869	\$6,482	6,682	6,290	5,622

## Budget Allocations, FY 2006-2010

<b>Allocations</b>	<b>FY06</b>	<b>FY07</b>	<b>FY08</b>	<b>FY09</b>	<b>FY10 Budget</b>
Instruction	\$49,905,541	\$47,800,201	47,260,234	52,188,158	56,612,744
Public Service	1,000	1,000	0		
Academic Support	11,383,090	9,972,370	10,899,480	11,310,841	12,591,803
Student Services	10,385,673	10,848,894	12,037,432	13,234,025	14,074,545
Institutional Support	19,958,734	19,443,233	20,932,222	22,205,369	22,776,505
Plant Operations	10,865,749	10,962,931	12,380,224	12,014,272	9,910,196
Departmental Sales & Services	2,786,000	2,700,000	1,527,416	1,475,820	200,000
Sponsored Operations	17,500,000	17,500,000	18,911,550	20,000,000	25,000,000
<b>Total Allocations</b>	<b>\$122,785,787</b>	<b>\$119,228,629</b>	<b>\$123,948,558</b>	<b>\$132,428,485</b>	<b>\$141,165,793</b>

# Library Collections, FY 2005-2010

<b>Library Collections</b>	<b>FY05</b>	<b>FY06</b>	<b>FY07</b>	<b>FY08</b>	<b>FY09</b>	<b>FY10</b>
<b>Holdings</b>						
Paper Volumes	239,288	248,083	NA	280,505	288,682	300,200
Paper Titles	NA	NA	NA	NA	NA	NA
Serial Subscriptions	1,018	1,013	NA	NA	NA	NA
Number of Microforms	37,611	31,114	NA	NA	NA	NA
Electronic Titles	NA	NA	NA	NA	25	27
<b>Expenditures</b>						
Materials: Paper & Microforms	\$267,044	\$241,472	509,166	561,937	561,098	106,294
Current Serial: Paper & Microforms	\$104,996	\$89,849	NA	108,337	116,309	NA
Audio-Visual Materials	\$35,930	\$60,843	NA	50,700	70,000	10,800
<b>Circulation</b>						
General Collection	67,623	67,806	58,847	58,305	75,417	106,114
Reserve Collection	17,838	15,241	NA	NA	NA	NA
<b>Interlibrary Loans</b>						
To Other Libraries	1,418	1,418	NA	1217	1472	1750
From Other Libraries	67	194	NA	111	130	199

Source: Library/Technical Services.

# Employees

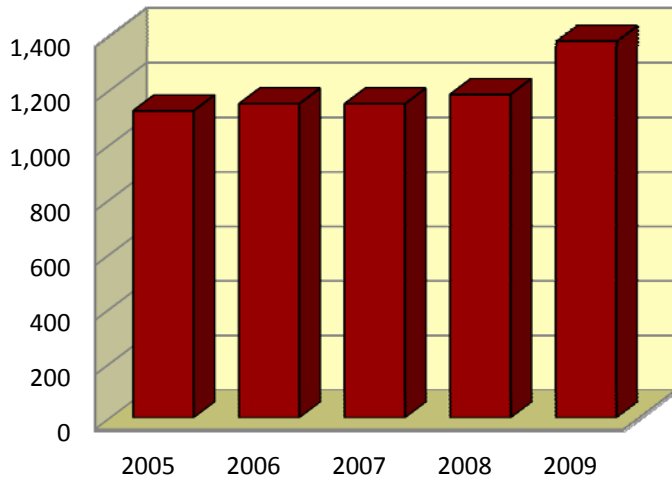
---

# Full-Time Employees by EEO Classification, Fall 2005-2009

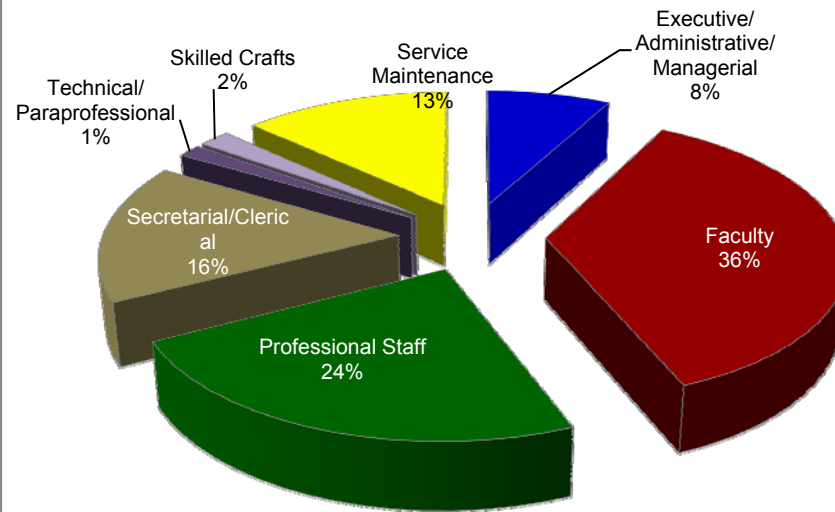
EEO Category	2005	2006	2007	2008	2009
Executive/Administrative/Managerial	90	94	88	84	108
Faculty	404	427	427	439	497
Professional Staff	277	258	245	273	323
Secretarial/Clerical	183	187	190	191	221
Technical/Paraprofessional	10	17	15	14	20
Skilled Crafts	26	25	24	25	27
Service Maintenance	133	140	159	157	181
<b>Totals</b>	<b>1,123</b>	<b>1,148</b>	<b>1,148</b>	<b>1,183</b>	<b>1,377</b>

Note: The faculty line represents instructional faculty (includes tenure-track faculty and limited-term faculty)

Full-Time Employees, Fall 2005 - 2009



Full-Time Employees by Classification, Fall 2009



Source: Office of Institutional Research and Planning and Human Resources Department.

# Corps of Instruction – All Campuses, Fall 2007

Note: The report represents full-time faculty. Column 1 represents instructional faculty (tenure-track and limited-term faculty). Columns 2-5 represent 12-month faculty.

	Instructional Faculty	Library Faculty	Dept.Head/Coor./Acad.Dir	Deans Academic	Other Members of the Corps	Total
<b>Rank</b>						
Professor	35	0	0	2	4	43
Associate Professor	120	1	28	1	4	154
Assistant Professor	66	6	12	1	2	87
Instructor	43	7	5	0	1	56
Limited Term	163	0	0	0	0	163
<b>Gender</b>						
Male	178	4	20	1	4	207
Female	249	10	27	3	7	296
<b>Race</b>						
Asian	19	0	0	0	0	19
Black	105	1	11	0	2	119
Hispanic	9	0	0	0	0	9
Native American	2	0	0	0	0	2
Multiracial	4	1	0	0	0	5
White	288	12	36	4	9	349
<b>Tenure</b>						
Tenured	182	0	33	4	8	227
On Tenure Track – Not Tenured	79	0	4	0	0	83
Not on Tenure Track	166	14	10	0	3	193
<b>Highest Degree</b>						
Doctorate	127	2	12	4	6	151
Specialist	6	0	0	0	0	6
Master's	285	12	35	0	5	337
Bachelor's/Other	9	0	0	0	0	9
<b>Total</b>	<b>427</b>	<b>14</b>	<b>47</b>	<b>4</b>	<b>11</b>	<b>503</b>

# Corps of Instruction – All Campuses, Fall 2008

Note: The report represents full-time faculty. Column 1 represents instructional faculty (tenure-track and limited-term faculty). Columns 2-5 represent 12-month faculty.

	Instructional Faculty	Library Faculty	Dept.Head/Coor./Acad.Dir	Deans Academic	Other Members of the Corps	Total
<b>Rank</b>						
Professor	37	0	3	4	3	47
Associate Professor	122	1	25	2	1	151
Assistant Professor	97	8	12	0	2	119
Instructor	81	6	0	0	2	94
Limited Term	102	0	0	0	0	102
<b>Gender</b>						
Male	182	4	28	2	3	219
Female	257	11	17	4	5	294
<b>Race</b>						
Asian	22	0	0	0	0	22
Black	106	1	11	0	2	120
Hispanic	7	0	0	0	0	7
Native American	2	0	0	0	0	2
Multiracial	5	1	0	0	0	6
White	297	13	34	6	6	356
<b>Tenure</b>						
Tenured	188	0	27	5	4	224
On Tenure Track – Not Tenured	146	0	9	1	4	160
Not on Tenure Track	105	15	9	0	0	129
<b>Highest Degree</b>						
Doctorate	143	2	16	5	3	169
Specialist	7	0	0	0	0	7
Master's	283	13	29	1	5	331
Bachelor's/Other	6	0	0	0	0	6
<b>Total</b>	<b>439</b>	<b>15</b>	<b>45</b>	<b>6</b>	<b>8</b>	<b>513</b>

# Corps of Instruction – All Campuses, Fall 2009

Note: The report represents full-time faculty. Column 1 represents instructional faculty (tenure-track and limited-term faculty). Columns 2-5 represent 12-month faculty.

	Instructional Faculty	Library Faculty	Dept.Head/Coor./Acad.Dir	Deans Academic	Other Members of the Corps	Total
<b>Rank</b>						
Professor	34	0	8	4	3	49
Associate Professor	117	2	23	3	1	146
Assistant Professor	114	10	14	0	1	139
Instructor	101	7	6	0	0	114
Limited Term	131	0	0	0	0	131
<b>Gender</b>						
Male	199	5	19	3	1	227
Female	298	14	32	4	4	352
<b>Race</b>						
Asian	21	1	1	0	0	23
Black	114	1	15	1	0	131
Hispanic	8	0	0	0	0	8
Native American	2	0	0	0	0	2
Multiracial	5	1	0	0	0	6
White	347	16	35	6	5	409
<b>Tenure</b>						
Tenured	180	0	31	5	4	220
On Tenure Track – Not Tenured	183	0	15	2	0	200
Not on Tenure Track	134	19	5	0	1	159
<b>Highest Degree</b>						
Doctorate	170	3	21	6	3	203
Specialist	6	0	0	0	0	6
Master's	314	16	30	1	2	363
Bachelor's/Other	7	0	0	0	0	7
<b>Total</b>	<b>497</b>	<b>19</b>	<b>51</b>	<b>7</b>	<b>5</b>	<b>579</b>

## Highest Earned Degree, Full-Time Instructional Faculty, Fall 2007

Division	Doctorate	Specialist	Master's	Bach/ Other	Total
Business Administration	2	0	27	0	29
ESL & Foreign Language	6	0	24	1	31
Fine Arts	1	1	10	0	12
Health Sciences/Physical Education	1	1	31	1	34
Humanities/Honors	25	0	86	1	112
Interpreter Training	0	0	1	2	3
Math/Computer Science/Engineering	13	3	59	3	78
Science	45	0	22	1	68
Social Science	34	1	25	0	60
<b>Total</b>	<b>127</b>	<b>6</b>	<b>285</b>	<b>9</b>	<b>427</b>
<b>% of FT Faculty</b>	<b>30%</b>	<b>1%</b>	<b>67%</b>	<b>2%</b>	<b>100.0%</b>

## Highest Earned Degree, Full-Time Instructional Faculty, Fall 2008

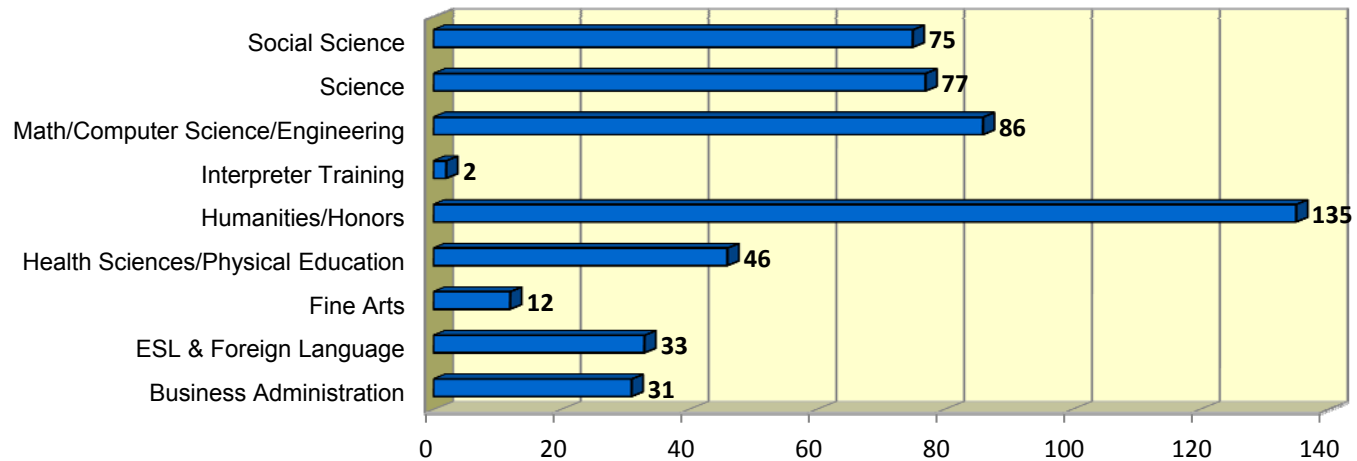
Division	Doctorate	Specialist	Master's	Bach/ Other	Total
Business Administration	5	0	21	0	26
ESL & Foreign Language	6	0	25	0	31
Fine Arts	2	1	8	0	11
Health Sciences/Physical Education	1	1	34	1	37
Humanities/Honors	35	0	87	0	122
Interpreter Training	0	0	1	1	2
Math/Computer Science/Engineering	12	3	60	4	79
Science	47	0	22	0	69
Social Science	35	2	25	0	62
<b>Total</b>	<b>143</b>	<b>7</b>	<b>283</b>	<b>6</b>	<b>439</b>
<b>% of FT Faculty</b>	<b>33%</b>	<b>2%</b>	<b>64%</b>	<b>1%</b>	<b>100.00%</b>

Note: The report represents instructional faculty (includes tenure-track and limited-term faculty).

# Highest Earned Degree, Full-Time Instructional Faculty, Fall 2009

Division	Doctorate	Specialist	Master's	Bach/ Other	Total
Business Administration	8	0	23	0	31
ESL & Foreign Language	6	0	27	0	33
Fine Arts	1	1	10	0	12
Health Sciences/Physical Education	3	1	40	2	46
Humanities/Honors	40	0	94	1	135
Interpreter Training	0	0	1	1	2
Math/Computer Science/Engineering	16	2	66	2	86
Science	54	0	23	0	77
Social Science	42	2	30	1	75
<b>Total</b>	<b>170</b>	<b>6</b>	<b>314</b>	<b>7</b>	<b>497</b>
<b>% of FT Faculty</b>	<b>34%</b>	<b>1%</b>	<b>63%</b>	<b>2%</b>	<b>100.0%</b>

Full-Time Faculty by Division, Fall 2009



Note: The report represents instructional faculty (includes tenure-track and limited-term faculty).

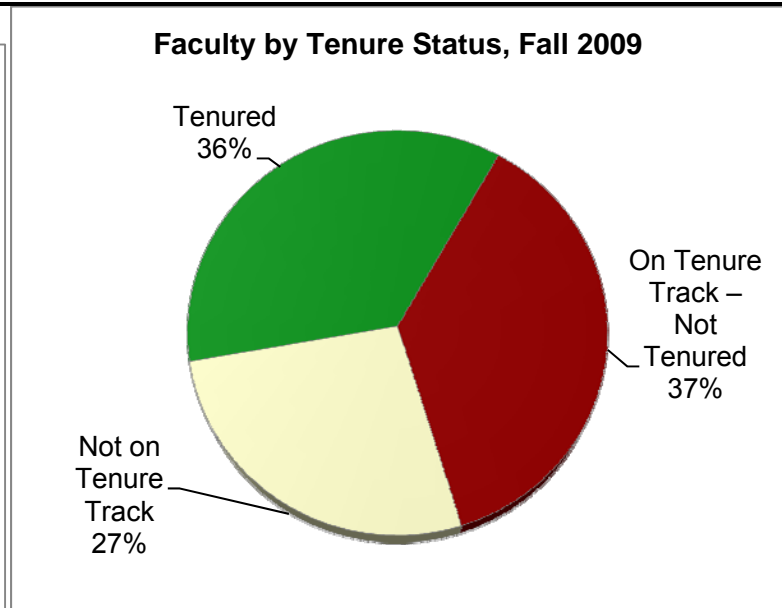
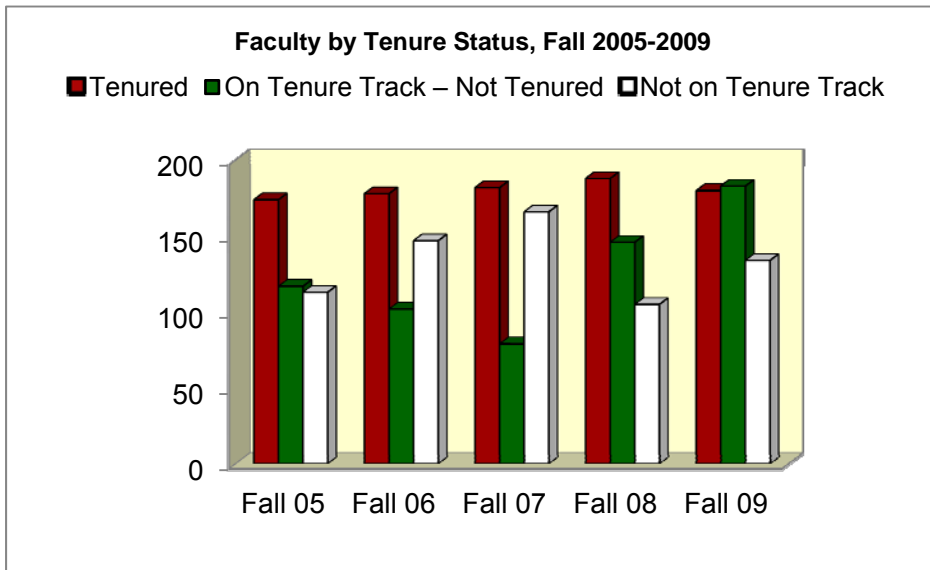
# Faculty Distribution by Rank and Ethnicity, Fall 2005-09

Academic Rank	Fall 05		Fall 06		Fall 07		Fall 08		Fall 09	
<b>Professor</b>	<b>33</b>	<b>8%</b>	<b>32</b>	<b>8%</b>	<b>35</b>	<b>8%</b>	<b>37</b>	<b>8%</b>	<b>34</b>	<b>7%</b>
Asian	1	3%	1	3%	4	11%	5	13%	5	15%
Black	6	18%	6	19%	7	20%	8	22%	6	17%
Hispanic	1	3%	1	3%	1	3%	0	0%	0	0%
Multiracial	0	0%	0	0%	0	0%	0	0%	0	0%
Native American	1	3%	1	3%	0	0%	0	0%	0	0%
White	24	73%	23	72%	23	66%	24	65%	23	68%
<b>Associate Professor</b>	<b>124</b>	<b>31%</b>	<b>125</b>	<b>29%</b>	<b>120</b>	<b>28%</b>	<b>122</b>	<b>28%</b>	<b>117</b>	<b>24%</b>
Asian	8	6%	9	7%	6	5%	5	4%	4	3%
Black	21	17%	22	18%	23	19%	24	20%	25	21%
Hispanic	1	1%	2	2%	2	2%	2	1%	3	3%
Multiracial	0	0%	0	0%	0	0%	0	0%	0	0%
Native American	0	0%	0	0%	0	0%	0	0%	0	0%
White	94	76%	92	73%	89	74%	91	75%	85	73%
<b>Assistant Professor</b>	<b>73</b>	<b>18%</b>	<b>72</b>	<b>17%</b>	<b>66</b>	<b>15%</b>	<b>97</b>	<b>22%</b>	<b>114</b>	<b>23%</b>
Asian	2	3%	2	3%	2	3%	5	5%	5	4%
Black	18	24%	18	25%	13	20%	20	21%	22	19%
Hispanic	5	7%	3	4%	2	3%	2	2%	1	1%
Multiracial	2	3%	2	3%	2	3%	3	3%	2	2%
Native American	0	0%	0	0%	1	1%	1	1%	1	1%
White	46	63%	47	65%	46	70%	66	68%	83	73%
<b>Instructor</b>	<b>62</b>	<b>15%</b>	<b>53</b>	<b>12%</b>	<b>43</b>	<b>10%</b>	<b>81</b>	<b>19%</b>	<b>101</b>	<b>20%</b>
Asian	1	2%	1	2%	1	2%	4	5%	4	4%
Black	11	18%	12	23%	11	26%	22	27%	27	27%
Hispanic	0	0%	0	0%	0	0%	1	1%	2	2%
Multiracial	0	0%	0	0%	0	0%	0	0%	1	1%
Native American	0	0%	0	0%	0	0%	0	0%	0	0%
White	50	80%	40	75%	31	72%	54	67%	67	66%
<b>Limited Term</b>	<b>112</b>	<b>28%</b>	<b>145</b>	<b>34%</b>	<b>163</b>	<b>38%</b>	<b>102</b>	<b>23%</b>	<b>131</b>	<b>26%</b>
Asian	4	3%	6	4%	6	4%	3	3%	3	2%
Black	34	30%	38	26%	51	31%	32	31%	34	26%
Hispanic	2	2%	5	4%	4	2%	2	2%	2	2%
Multiracial	3	3%	2	1%	2	1%	2	2%	2	2%
Native American	0	0%	1	1%	1	1%	1	1%	1	1%
White	69	62%	93	64%	99	61%	62	61%	89	67%
<b>Total Faculty</b>	<b>404</b>	<b>100%</b>	<b>427</b>	<b>100%</b>	<b>427</b>	<b>100%</b>	<b>439</b>	<b>100%</b>	<b>497</b>	<b>100%</b>

Note: The report represents full-time instructional faculty (includes tenure-track and limited-term faculty).

# Faculty Distribution by Tenure Status, Fall 2005-09

Year	Tenured		On Tenure Track – Not Tenured		Not on Tenure Track		Total
	#	%	#	%	#	%	#
Fall 05	174	43	117	29	113	28	404
Fall 06	178	42	102	24	147	34	427
Fall 07	182	54	79	38	166	23	427
Fall 08	188	43	146	33	105	24	439
Fall 09	180	36	183	37	134	27	497



Note: The report represents full-time instructional faculty (includes tenure-track and limited-term faculty).

Source: Office of Institutional Research and Planning and Human Resources Department.

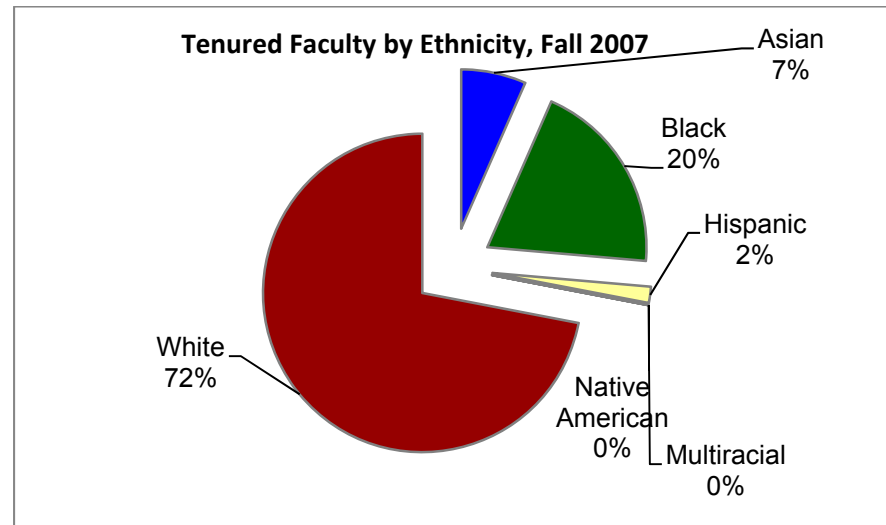
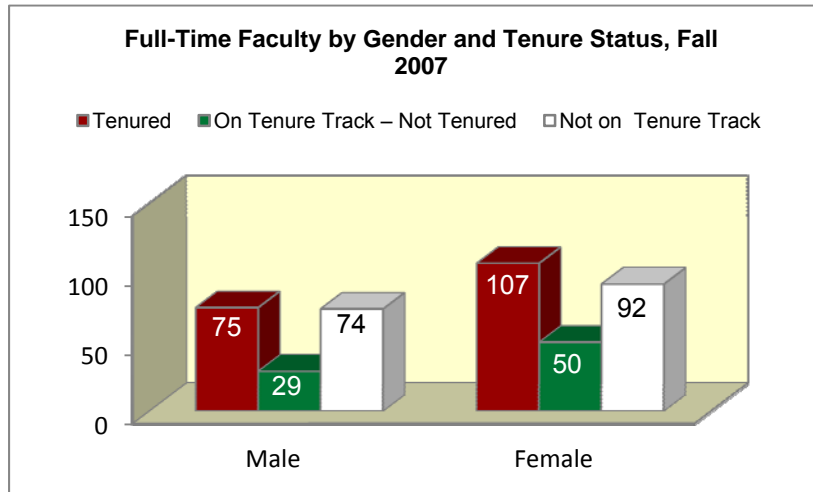
# Tenure Status by Division, Gender, & Ethnicity, Fall 2007

Division	Tenured	On Tenure Track – Not Tenured	Not on Tenure Track	Total
Business Administration	12	8	9	29
ESL & Foreign Language	12	5	14	31
Fine Arts	6	4	2	12
Health Sciences/Physical Education	13	13	8	34
Humanities/Honors	42	23	47	112
Interpreter Training	0	0	3	3
Math/CS/ENGR	39	8	31	78
Science	27	9	32	68
Social Science	31	9	20	60
<b>Total</b>	<b>182</b>	<b>79</b>	<b>166</b>	<b>427</b>

Gender	Tenured	On Tenure Track – Not Tenured	Not on Tenure Track	Total
Male	75	29	74	178
Female	107	50	92	249
<b>Total</b>	<b>182</b>	<b>79</b>	<b>166</b>	<b>427</b>

Ethnicity	Tenured	On Tenure Track – Not Tenured	Not on Tenure Track	Total
Asian	12	1	6	19
Black	36	17	52	105
Hispanic	3	2	4	9
Multiracial	0	2	2	4
Native American	0	1	1	2
White	131	56	101	288
<b>Total</b>	<b>182</b>	<b>79</b>	<b>166</b>	<b>427</b>



Source: Office of Institutional Research and Planning and Human Resources Department.

Note: The report represents full-time instructional faculty (includes tenure-track and limited-term faculty).

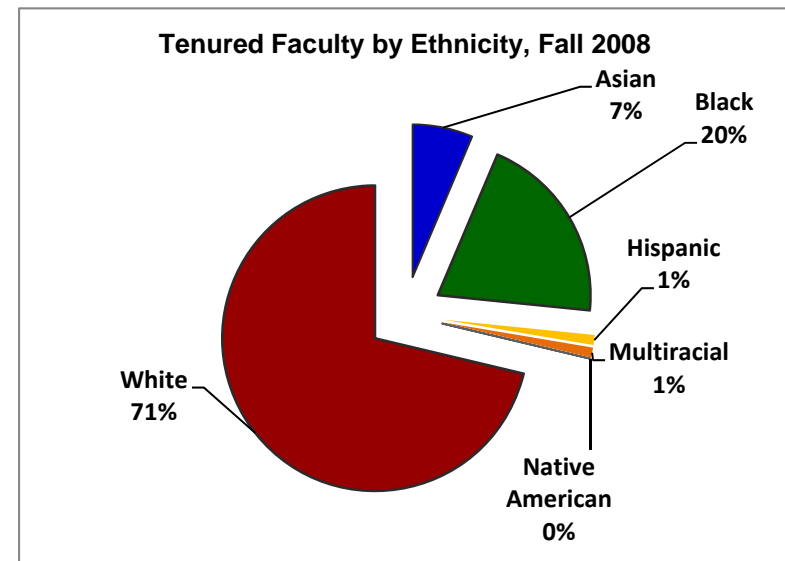
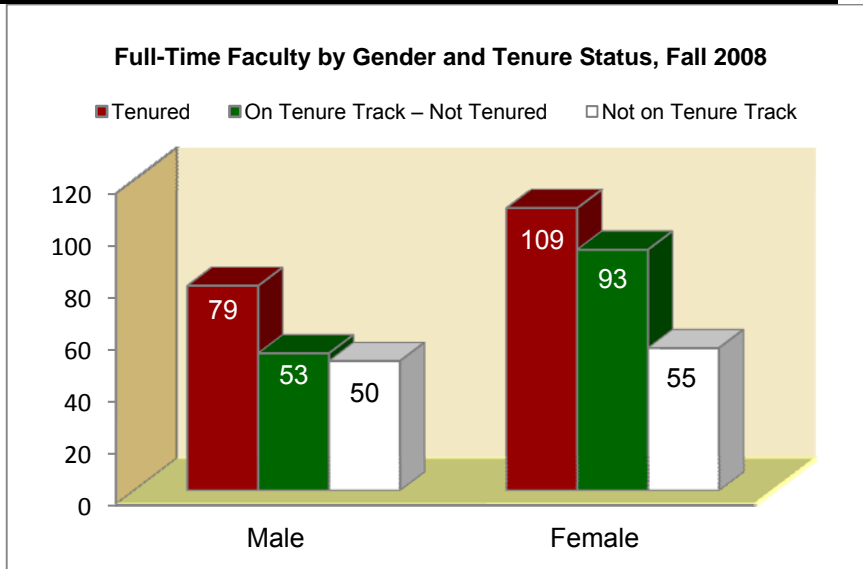
# Tenure Status by Division, Gender, & Ethnicity, Fall 2008

Division	Tenured	On Tenure Track–Not Tenured	Not on Tenure Track	Total
Business Administration	13	10	3	26
ESL & Foreign Language	12	11	8	31
Fine Arts	6	4	1	11
Health Sciences/Physical Education	13	16	8	37
Humanities/Honors	49	38	35	122
Interpreter Training	0	0	2	2
Math/CS/ENGR	36	20	23	79
Science	29	23	17	69
Social Science	30	24	8	62
<b>Total</b>	<b>188</b>	<b>146</b>	<b>105</b>	<b>439</b>

Gender	Tenured	On Tenure Track – Not Tenured	Not on Tenure Track	Total
Male	79	53	50	182
Female	109	93	55	257
<b>Total</b>	<b>188</b>	<b>146</b>	<b>105</b>	<b>439</b>

Ethnicity	Tenured	On Tenure Track – Not Tenured	Not on Tenure Track	Total
Asian	12	7	3	22
Black	38	35	33	106
Hispanic	2	3	2	7
Multiracial	2	1	2	5
Native American	0	1	1	2
White	134	99	64	297
<b>Total</b>	<b>188</b>	<b>146</b>	<b>105</b>	<b>439</b>



Note: The report represents full-time instructional faculty (includes tenure-track and limited-term faculty).

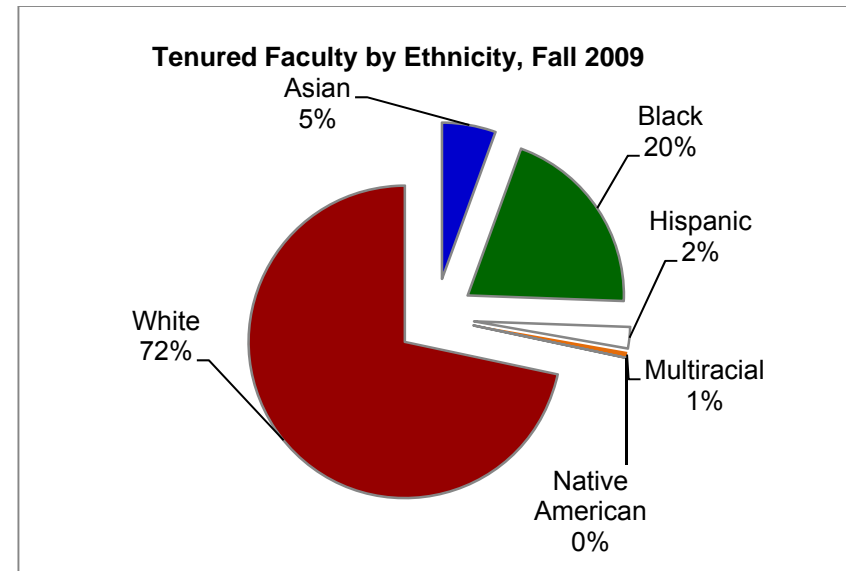
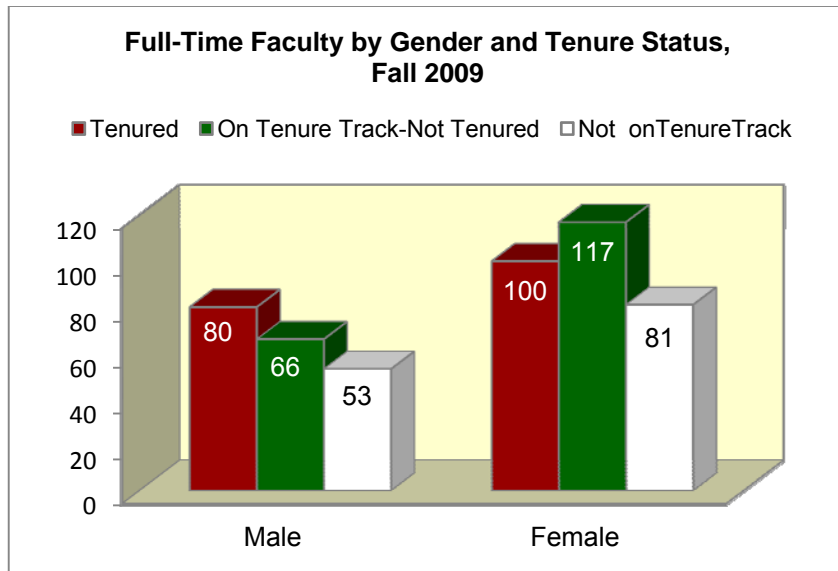
# Tenure Status by Division, Gender, & Ethnicity, Fall 2009

Division	Tenured	On Tenure Track-Not Tenured	Not on Tenure Track	Total
Business Administration	12	11	8	31
ESL & Foreign Language	11	13	9	33
Fine Arts	6	3	3	12
Health Sciences/Physical Education	11	24	11	46
Humanities/Honors	44	51	40	135
Interpreter Training	0	0	2	2
Math/CS/ENGR	34	33	19	86
Science	31	24	22	77
Social Science	31	24	20	75
<b>Total</b>	<b>180</b>	<b>183</b>	<b>134</b>	<b>497</b>

Gender	Tenured	On Tenure Track-Not Tenured	Not on Tenure Track	Total
Male	80	66	53	199
Female	100	117	81	298
<b>Total</b>	<b>180</b>	<b>183</b>	<b>134</b>	<b>497</b>

Ethnicity	Tenured	On Tenure Track-Not Tenured	Not on Tenure Track	Total
Asian	10	8	3	21
Black	36	43	35	114
Hispanic	4	2	2	8
Multiracial	1	2	2	5
Native American	0	1	1	2
White	129	127	91	347
<b>Total</b>	<b>180</b>	<b>183</b>	<b>134</b>	<b>497</b>



Source: Office of Institutional Research and Planning and Human Resources Department.

Note: The report represents full-time instructional faculty (includes tenure-track and limited-term faculty).

## Faculty Workload by Division, Fall 2006 & 2007; by Campus, Fall 2007

Division	Sections Taught		Students Taught		FTF Classes	PTF Classes	Average Class Size		Part-Time %	
	Fall 06	Fall 07	Fall 06	Fall 07	Fall 07	Fall 07	Fall 06	Fall 07	Fall 06	Fall 07
BUSINESS	202	212	5,448	6,025	139	73	27	28	37.6%	34.4%
DENTAL HYGIENE	14	12	304	300	12	0	22	25	14.3%	0.0%
ENSL & FOR. LANG	262	219	4,184	3,471	115	104	16	16	42.0%	47.5%
FINE ARTS	108	135	1,844	1,824	70	65	17	14	42.6%	48.1%
FIRE MANAGEMENT	2	3	20	23	1	2	10	8	50.0%	66.7%
HEDS	23	28	365	584	7	21	16	21	47.8%	75.0%
HUMANITIES	750	795	15,983	17,089	492	303	21	21	39.2%	38.1%
INTERPRETER TRAINING	15	23	152	211	8	15	10	9	26.7%	65.2%
MATHEMATICS & CS	468	482	11,115	12,209	290	192	24	25	27.8%	39.8%
NURSING	11	12	322	414	11	1	29	35	0.0%	8.3%
PHYSICAL EDUCATION	189	181	3,570	3,795	98	83	19	21	46.6%	45.9%
SCIENCE	523	525	11,910	12,499	308	217	23	24	37.3%	41.3%
SOCIAL SCIENCE	472	442	13,775	13,403	272	170	29	30	37.5%	38.5%
<b>COLLEGE TOTAL</b>	<b>3,039</b>	<b>3,069</b>	<b>68,992</b>	<b>71,847</b>	<b>1,823</b>	<b>1,246</b>	<b>23</b>	<b>23</b>	<b>22.7%</b>	<b>40.6%</b>

CAMPUS	Sections Taught Fall 2007	Students Taught Fall 2007	FTF Classes Fall 2007	PTF Classes Fall 2007	Average Class Size Fall 2007	Part-Time % Fall 2007
ALPHARETTA	44	1,060	22	22	24	50.0%
CLARKSTON	727	15,221	395	332	21	45.7%
DECATUR	341	7,618	181	160	22	46.9%
DUNWOODY	888	22,068	562	326	25	36.7%
LAWRENCEVILLE	462	11,648	275	187	25	40.5%
ON-LINE	334	8,291	220	114	25	34.1%
NEWTON	273	5,941	168	105	22	38.5%

Note: FTF refers to classes taught by full-time faculty; PTF refers to classes taught by part-time faculty.

Source: Academic Affairs.

## Faculty Workload by Division, Fall 2007 & 2008; by Campus, Fall 2008

Division	Sections Taught		Students Taught		FTF Classes	PTF Classes	Average Class Size		Part-Time %	
	Fall 07	Fall 08	Fall 07	Fall 08	Fall 08	Fall 08	Fall 07	Fall 08	Fall 07	Fall 08
BUSINESS	212	203	6,025	5,858	134	69	28	29	34.4%	34.0%
DENTAL HYGIENE	12	11	300	224	11	0	25	20	0.0%	0.0%
ENSL & FOR. LANG	219	215	3,471	3,410	122	93	16	16	47.5%	43.3%
FINE ARTS	135	150	1,824	1,960	75	75	14	13	48.1%	50.0%
FIRE MANAGEMENT	3	3	23	17	2	1	8	6	66.7%	33.3%
HEDS	28	33	584	733	17	16	21	22	75.0%	48.5%
HUMANITIES	795	801	17,089	17,305	557	244	21	22	38.1%	30.5%
INTERPRETER TRAINING	23	25	211	227	14	11	9	9	65.2%	44.0%
MATHEMATICS & CS	482	482	12,209	12,340	310	172	25	26	39.8%	35.7%
NURSING	12	17	414	720	16	1	35	42	8.3%	5.9%
PHYSICAL EDUCATION	181	184	3,795	3,837	101	83	21	21	45.9%	45.1%
SCIENCE	525	527	12,499	12,494	314	213	24	24	41.3%	40.4%
SOCIAL SCIENCE	442	475	13,403	15,188	337	138	30	32	38.5%	29.1%
<b>COLLEGE TOTAL</b>	<b>3,069</b>	<b>3,126</b>	<b>71,847</b>	<b>74,313</b>	<b>2,010</b>	<b>1,116</b>	<b>23</b>	<b>24</b>	<b>40.6%</b>	<b>35.7%</b>

CAMPUS	Sections Taught Fall 2008	Students Taught Fall 2008	FTF Classes Fall 2008	PTF Classes Fall 2008	Average Class Size Fall 2008	Part-Time % Fall 2008
ALPHARETTA	76	2,131	45	31	28	40.8%
CLARKSTON	833	17,588	539	294	21	35.3%
DECATUR	415	9,129	244	171	22	41.2%
DUNWOODY	997	25,528	693	304	26	30.5%
LAWRENCEVILLE	31	718	12	19	23	61.3%
ON-LINE	451	11,685	276	175	26	38.8%
NEWTON	323	7,534	201	122	23	37.8%

Source: Academic Affairs.

## Faculty Workload by Division, Fall 2008 & 2009; by Campus, Fall 2009

Division	Sections Taught		Students Taught		FTF Classes	PTF Classes	Average Class Size		Part-Time %	
	Fall 08	Fall 09	Fall 08	Fall 09	Fall 09	Fall 09	Fall 08	Fall 09	Fall 08	Fall 09
BUSINESS	203	222	5,858	6,243	149	73	29	28	34.0%	32.9%
DENTAL HYGIENE	11	10	224	190	9	1	20	19	0.0%	10.0%
ENSL & FOR. LANG	215	218	3,410	3,804	132	86	16	17	43.3%	39.4%
FINE ARTS	150	176	1,960	2,243	91	85	13	13	50.0%	48.3%
FIRE MANAGEMENT	3	3	17	13	2	1	6	4	33.3%	33.3%
HEDS	33	39	733	886	13	26	22	23	48.5%	66.7%
HUMANITIES	801	954	17,305	20,461	620	334	22	21	30.5%	35.0%
INTERPRETER TRAINING	25	26	227	317	14	12	9	12	44.0%	46.2%
MATHEMATICS & CS	482	560	12,340	13,868	375	185	26	25	35.7%	33.0%
NURSING	17	15	720	731	15	0	42	49	5.9%	0.0%
PHYSICAL EDUCATION	184	205	3,837	4,485	119	86	21	22	45.1%	42.0%
SCIENCE	527	570	12,494	13,887	366	204	24	24	40.4%	35.8%
SOCIAL SCIENCE	475	553	15,188	16,984	378	175	32	31	29.1%	31.6%
<b>COLLEGE TOTAL</b>	<b>3,126</b>	<b>3,551</b>	<b>74,313</b>	<b>84,112</b>	<b>2,283</b>	<b>1,268</b>	<b>24</b>	<b>24</b>	<b>35.7%</b>	<b>35.7%</b>

CAMPUS	Sections Taught Fall 2009	Students Taught Fall 2009	FTF Classes Fall 2009	PTF Classes Fall 2009	Average Class Size Fall 2009	Part-Time % Fall 2009
ALPHARETTA	92	2,358	54	38	26	41.3%
CLARKSTON	948	20,484	603	345	22	36.4%
DECATUR	443	10,303	284	159	23	35.9%
DUNWOODY	1,124	27,951	751	373	25	33.2%
ONLINE	542	13,845	336	206	26	38.0%
NEWTON	402	9,171	255	147	23	36.6%

Source: Academic Affairs.

# Quick References for GPC

---

# Quick Reference I for Georgia Perimeter College

<b>Number of Students On &amp; Off Campus, Fall 2009</b>	
<b>Total Headcount (Unduplicated)</b>	<b>24,549</b>
Headcount by Gender:	
Male	9,498
Female	15,051
Headcount by Race:	
Asian	2,002
Black	10,270
Hispanic	1,433
Multiracial	832
Native American	71
White	7,134
Unknown/Undeclared	2,807
Headcount by Campus: (Duplicated)	
Alpharetta	1,017
Clarkston	7,331
Decatur	3,916
Dunwoody	9,347
Rockdale/Newton	2,841
Off Campus/Distance Education	7,034
<b>Full-Time Equivalent</b>	<b>18,796</b>
<b>Degrees Awarded FY 2009</b>	
<b>Total Awarded</b>	<b>1,514</b>
Associate of Arts	197
Associate of Science	1,140
Associate of Applied Science	10
Certificate & Career Program	8

Career Program	159
<b>Degrees by Campus</b>	
Alpharetta	12
Clarkston	570
Dunwoody	655
Decatur	132
Rockdale/Newton	142
Distance Learning	3
<b>Degrees by Ethnicity</b>	
Asian	152
Black	492
Hispanic	109
Multiracial	97
Native American	1
White	649
Unknown/Undeclared	14
<b>Enrollment by County Fall 2009</b>	
Barrow	65
Cherokee	258
Clarke	41
Clayton	878
Cobb	1,106
DeKalb	5,496
Douglas	131
Fayette	99
Forsyth	339
Fulton	4,107
Gwinnett	4,298
Henry	645

Newton	1,035
Rockdale	991
Walton	629
Others in-State	661
Out-of-State	3,770
<b>Tuition &amp; Fees FY 2010</b>	
<b>Tuition (per hour)</b>	
In-State	\$80.00
Out-of-State	\$310.00
Distance Learning	\$99.00
<b>Required Fees</b>	
Application (one time only)	\$20.00
Student Support Service	\$10.00
Student Activity	\$45.00
Student Athletic	\$27.00
Technology	\$50.00
Institutional Fee	\$100.00
<b>Special Fees</b>	
Applied Music per hour	\$75.00
Dental Hygiene Insurance/Lab	\$65.00
Critical Languages	\$30.00
Late Registration (per semester)	\$50.00
Nursing Insurance/Lab (per semester)	\$156.00
Science Lab (per course)	\$35.00
ID Card (New Students)	\$10.00
Int'l Student Health Insurance	\$1050.00

# Quick Reference II for Georgia Perimeter College

Revenue & Expenditure FY 06		Corps of Instruction, Fall 09		Georgia Population Projection 00 - 25					
<b>Revenues</b>		<b>By Rank</b>		White	Black	Native Am	Asian	Total	
Tuition and Fees	\$36,793,184	Professor	33	00	69%	29%	0.2%	2.0%	7,874,792
State/Local Appropriation	64,422,543	Associate Professor	124	05	68%	30%	0.2%	2.0%	8,412,686
Other Income	1,284,060	Assistant Professor	73	10	67%	31%	0.2%	2.1%	8,823,902
Departmental Sales & Services	2,786,000	Instructor	148	15	66%	32%	0.2%	2.2%	9,199,751
Sponsored Operations	17,500,000	Unranked	0	20	65%	33%	0.2%	2.4%	9,551,672
<b>TOTAL REVENUE</b>	<b>122,785,787</b>	<b>By Gender</b>		25	64%	34%	0.2%	2.5%	9,869,427
<b>Budget Allocations</b>		Male	199	<b>Faculty Status By Division</b>					
Instruction	49,905,541	Female	298	<b>Fall 2009</b>					
Public Services	1,000	<b>By Race</b>		Business Administration	31				
Academic Support	11,383,090	Asian	21	ESL & Foreign Language	33				
Student Services	10,385,673	Black	114	Fine Arts	12				
Institutional Support	19,958,734	Hispanic	8	Health Sciences/Physical Education	46				
Plant Operations	10,865,749	Native American	2	Humanities/Honors	135				
Departmental Sales & Services	2,786,000	Multiracial	5	Interpreter Training	2				
Sponsored Operations	17,500,000	White	347	Math/CSI/ENGR	86				
<b>TOTAL ALLOCATIONS</b>	<b>\$122,785,787</b>	<b>By Highest Degree</b>		Science	77				
<b>Expenditure Per Student</b>		Doctorate	170	Social Science	75				
FTE Student	15,327	Specialist	6	<b>Total</b>	<b>497</b>				
Expenditure Per FTE Student (excluding sponsored)	\$6,869	Master's	314	<b>Sources:</b> 1. Selig Center, University of Georgia, <i>Projected Population by Race, Georgia, 1995-2025</i>					
		Bachelor's	7						
		<b>By Tenure</b>							
		Tenured	180						
		On Tenure Track-Not Tenured	183						
		Not on Tenure Track	134						
		<b>Total</b>	<b>497</b>						

# A Directory for Georgia Perimeter College

## GPC District Offices

VP Educational Affairs	678-891-2450
Accounting	678-891-2070
Admissions and Records	678-891-3250
Alumni Relations	678-891-2550
Athletics	678-891-2360
Center for Organizational Development	678-891-3021
Facilities	678-891-2805
Distance Learning	678-891-2805
Financial Aid	678-891-3000
Human Resources	678-891-2500
ID Card Services	678-891-3330
International Center	678-891-3230
Institutional Advancement	678-891-2550
Office of Institutional Research and Planning	678-891-2570
Marketing and Public Relations	678-891-2680
Recruitment and Retention	678-891-4125
VP Financial Affairs	678-891-2515
Grants & Sponsored Programs	678-891-2525
Payroll	678-891-2645
Budget	678-891-2375
Auxiliary Services	678-891-3340
Purchasing	678-891-3325

## GPC Campus Offices

<b>Alpharetta</b>	
Registrar and Admissions	404-413-7878
Enrollment Registration Services/Online	404-413-7878
Financial Aid	678-891-3400
<b>Clarkston</b>	
Registrar and Admissions	678-891-3500
Student Accounts	678-891-3810
Financial Aid	678-891-3400
Disability Services	678-891-3385
<b>Dunwoody</b>	
Registrar and Admissions	770-274-5200
Student Accounts	770-274-5395
Financial Aid	678-891-3400
Disability Services	770-274-5235
<b>Decatur</b>	
Registrar and Admissions	678-891-2470
Student Accounts	678-891-2730
Financial Aid	678-891-3400
Disability Services	678-891-2408
<b>Newton</b>	
Registrar and Admissions	770-278-1215
Student Accounts	770-278-1310
Financial Aid	770-278-1275
Disability Services	770-278-1316